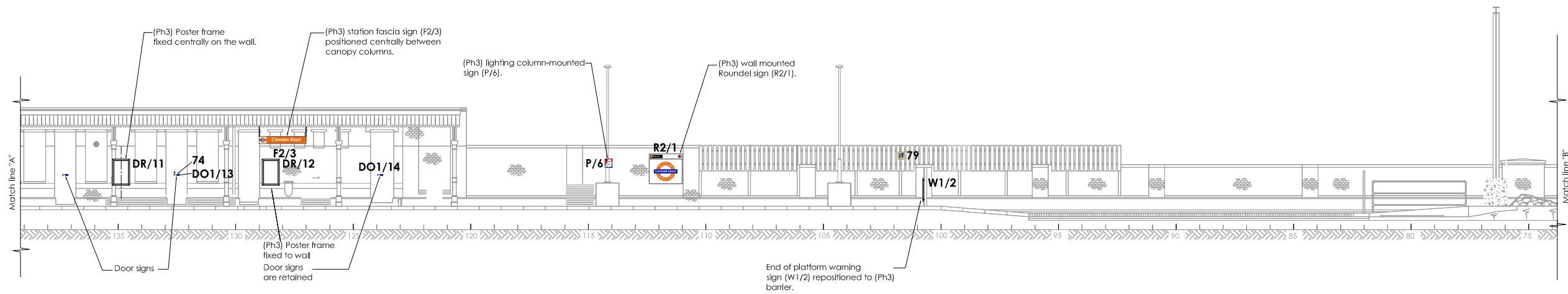
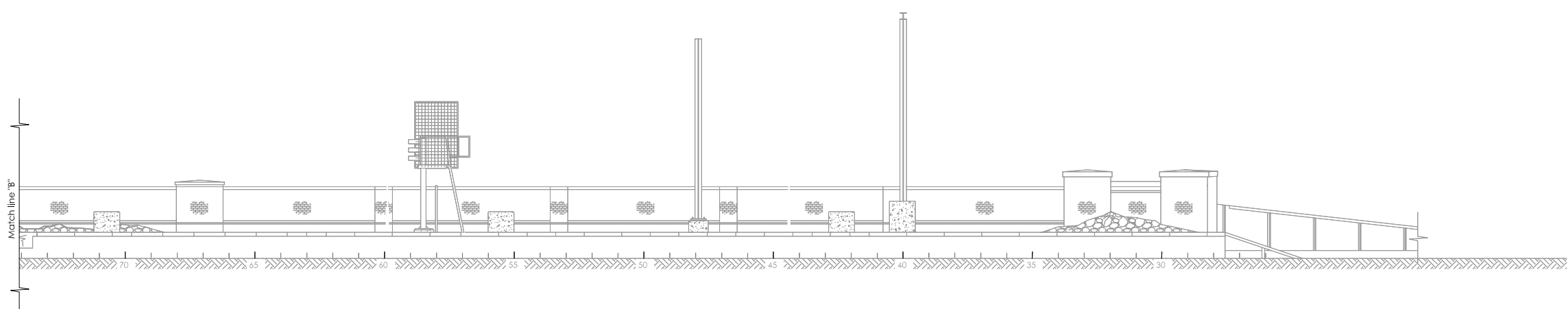


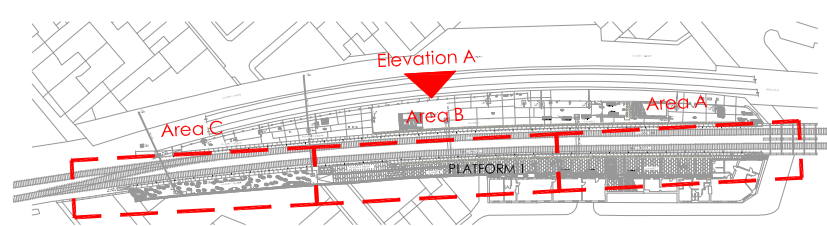
Elevation A: Platform 1 - Area A



Elevation A: Platform 1 - Area B



Elevation A: Platform 1 - Area C



Key Plan
N.T.S.

- general notes
- This drawing is to be read in conjunction with all relevant Drawings, Specifications, and Contract Documents.
 - This drawing must only be reproduced in colour.
 - All dimensions in millimetres (mm) and all levels are in metres (m). Do not scale from this drawing.
 - The information denoted on these As Built drawings has been compiled from sources available at the time of their production. Where work has been undertaken by the installation contractor which has been concealed from view prior to inspection, it has been assumed that no change has occurred (unless contemporaneously produced site sketches have been supplied), in which circumstance no modification to the construction information for those areas has been included with this As Built drawing.
 - All new formwork to be in accordance with the specification.
 - Indicates localised patching to cover existing foundations
 - Indicates top layer of trench infill
 - All items prefixed (Ph3) denote works carried out in Phase 3.
 - For all setting out of equipment, refer to chainage lengths. Where provided, the site setting out point will be indicated for reference only.

revision

AS BUILT
 BASED ON
 INFORMATION
 CURRENT 05/12/2011

N*	Revision	APN	05.12.11	IG
	Issued for As Built			

drawing status

AS BUILT

project

client **LOROL**

project title
 London Overground
 Camden Road Station

drawing title
 Station Signage
 Platform Elevations
 Sheet 1 of 2

scale (A1)	date	drawn	checked
1:100	Jun 11	IG	APN

reference

drawing no.	revision
CMD-PAD-92-3-01	AB