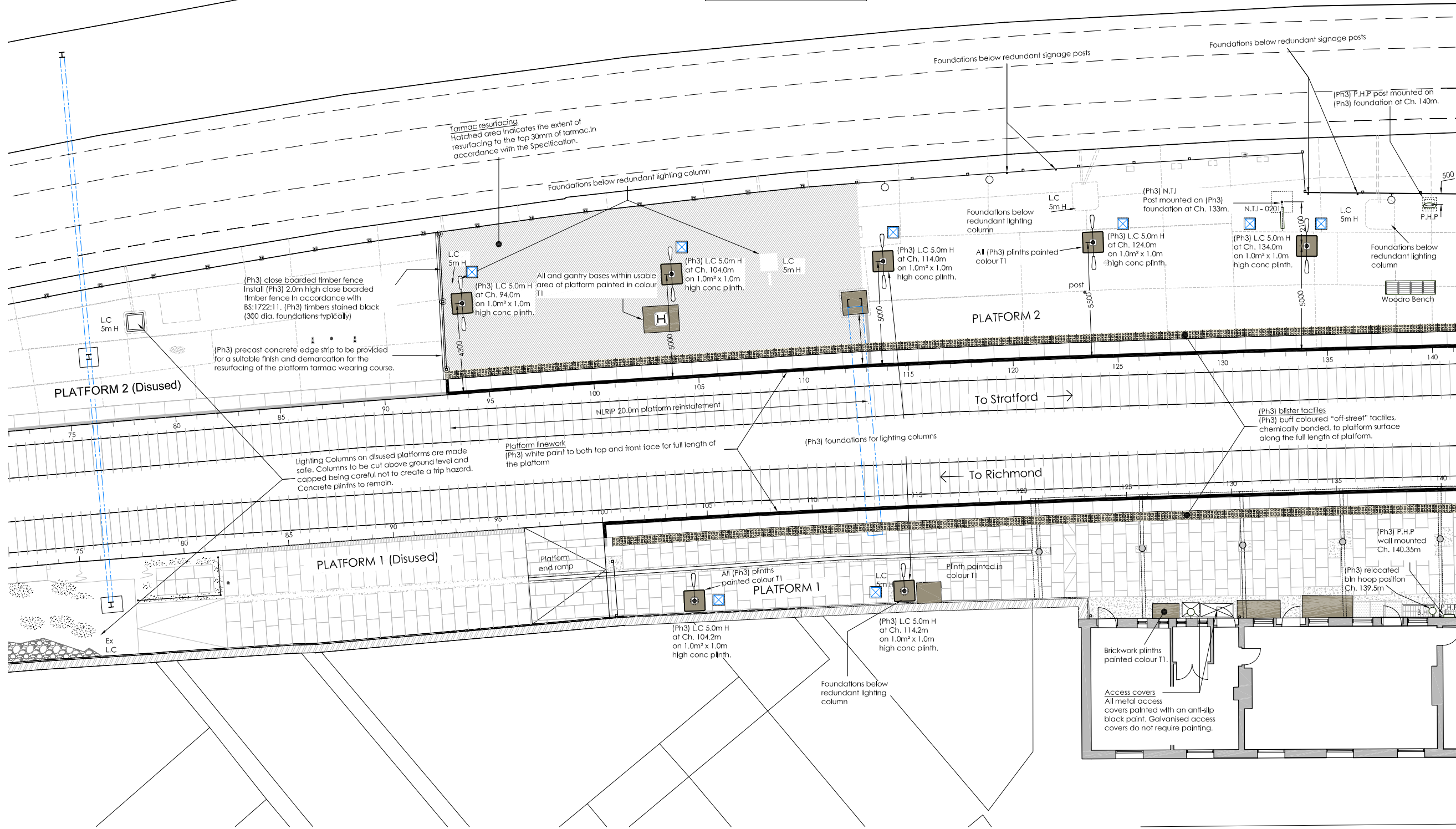


Key Plan
N.T.S.

North London Railway Infrastructure Project
Platform to be reinstated by others. Platform surfacing and tactile, linework and new surfacing falls within this phase of works.

PLATFORM (Disused)



Platform Plan - Area B

general notes

- This drawing is to be read in conjunction with all relevant Drawings, Specifications, and Contract Documents.
- This drawing must only be reproduced in colour.
- All dimensions in millimetres (mm) and all levels are in metres (m). Do not scale from this drawing.
- The information denoted on these As Built drawings has been compiled from sources available at the time of their production. Where work has been undertaken by the installation contractor which has been concealed from view prior to inspection, it has been assumed that no change has occurred (unless contemporaneously produced site sketches have been supplied), in which circumstance no modification to the construction information for those areas has been included with the As Built drawings.
- All new formwork to be in accordance with the specification.
 - Indicates localised patching to cover existing foundations
 - Indicates top layer of trench infill
- All items prefixed (Ph3) denote works carried out in Phase 3.
- For all setting out of equipment, refer to change lengths. Where provided, the site setting out point will be indicated for reference only.

Paint Colours - Traditional Station

- M1
 - M2
 - M3
 - M4
 - M5
- All finished paintwork colours are to be read in conjunction with the London Overground Station Colour Standard for the Built Environment Issue no. 4.

revision

AS BUILT
BASED ON
INFORMATION
CURRENT 05/12/2011

A8	Issued for As Built	APN	05.12.11	IG
N*	Revision	By	Date	Ch'd

drawing status

AS BUILT

project

client
LOROL
London Overground
Camden Road Station

drawing title

Station
Platform Plans
Sheet 2 of 3

scale (A1)	date	drawn	checked
1:100	Jun 11	IG	APN

reference

drawing no.	revision
CMD-PAD-10-1-02	AB