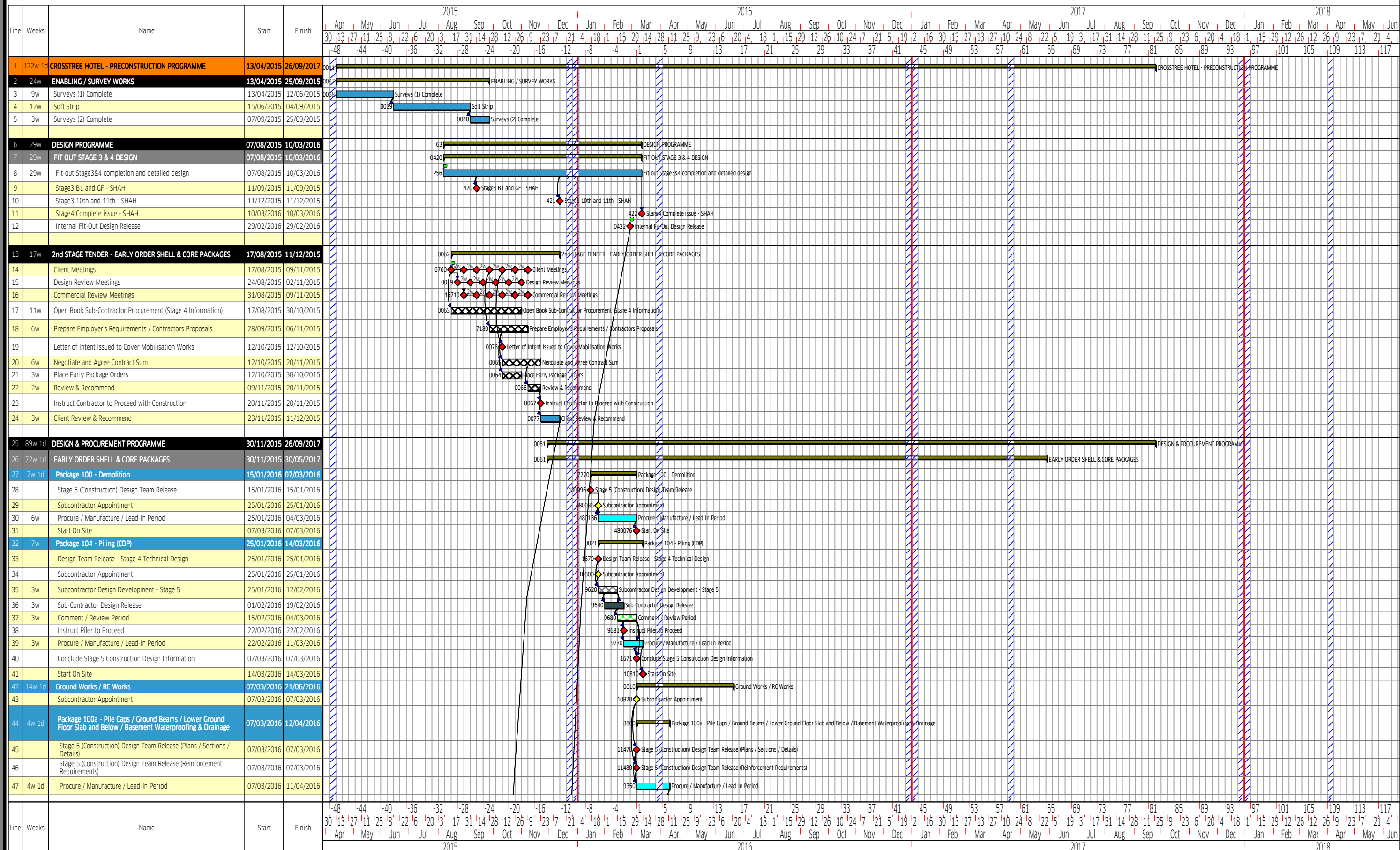


CAMDEN TOWN HALL ANNEXE

CROSSTREE

REVISED SEQUENCE PROGRAMME



Project: Camden Town Hall Annexe, for Crosstree

DRAWN BY:

SJB

PROG REF:

M1400-CP-001

REVISION NO:

-

Issue Date:

16/02/2016

PROGRAMME COMMENT / STATUS:



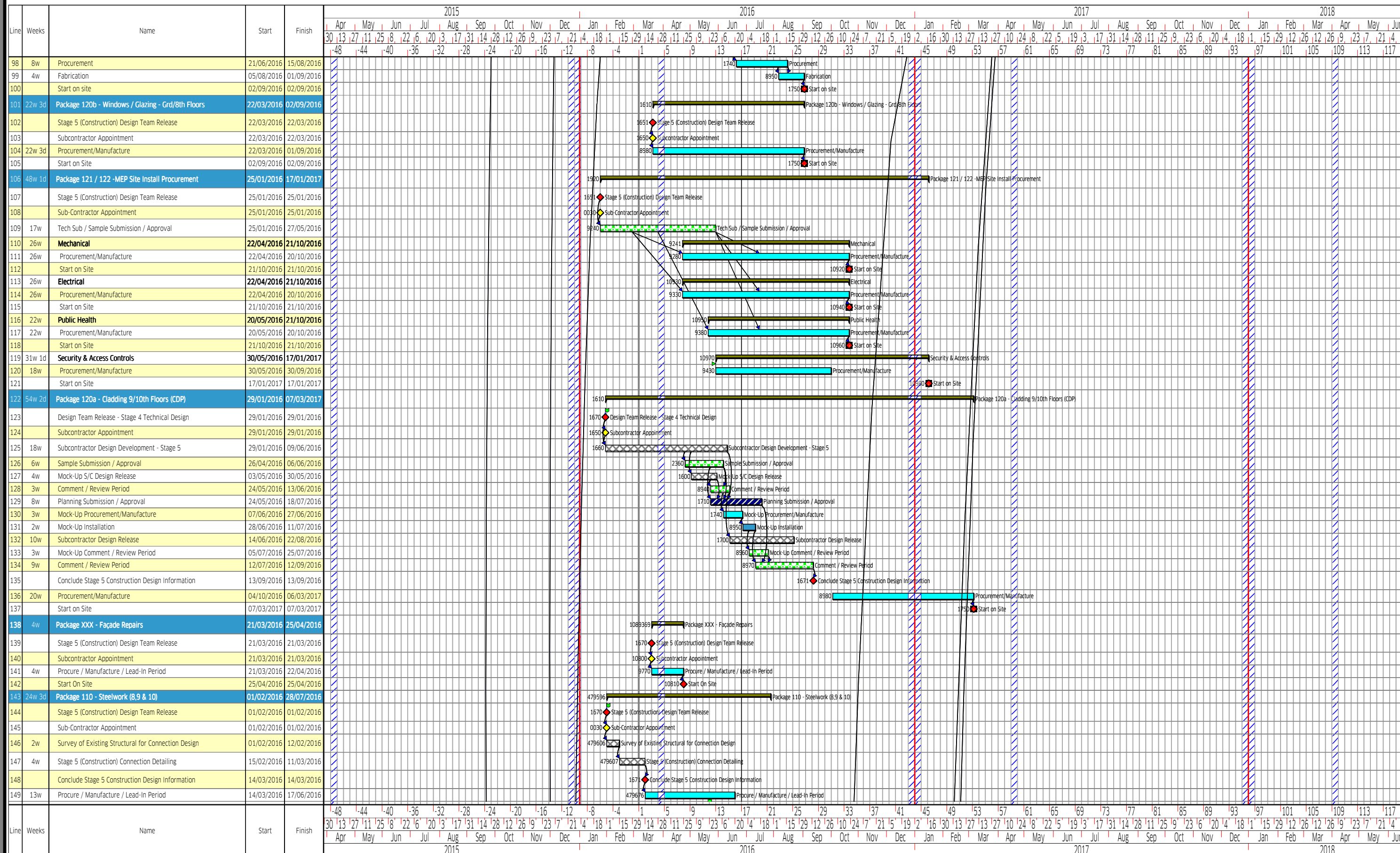
McLaren Construction Ltd
4th Floor
10 Chiswell Street
London, EC1Y 4UQ

www.mclarengroup.com
enquiries@mclarengroup.com
Tel: +44 (0)207 078 6963

CAMDEN TOWN HALL ANNEXE

CROSSTREE

REVISED SEQUENCE PROGRAMME



Project: Camden Town Hall Annexe, for Crosstree

DRAWN BY:

SJB

PROG REF:

M1400-CP-001

REVISION NO:

-

Issue Date:

16/02/2016

PROGRAMME COMMENT / STATUS:



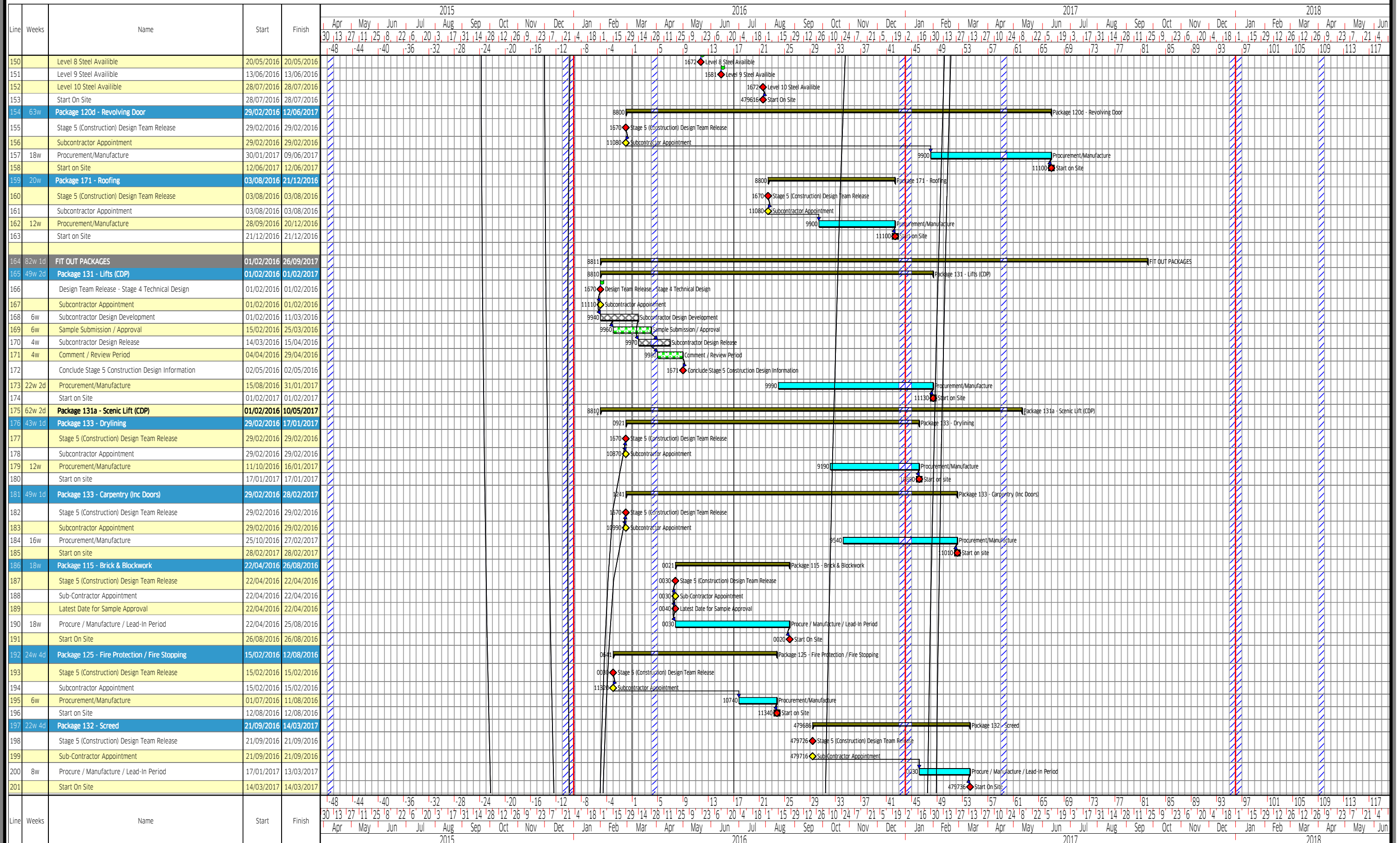
McLaren Construction Ltd
4th Floor
10 Chiswell Street
London, EC1Y 4UQ

www.mclarengroup.com
enquiries@mclarengroup.com
Tel: +44 (0)207 078 6963

CAMDEN TOWN HALL ANNEXE

CROSSTREE

REVISED SEQUENCE PROGRAMME



Project: Camden Town Hall Annexe, for Crosstree

DRAWN BY:
SJB

PROG REF:
M1400-CP-001

REVISION NO:
-

Issue Date:
16/02/2016

PROGRAMME COMMENT / STATUS:



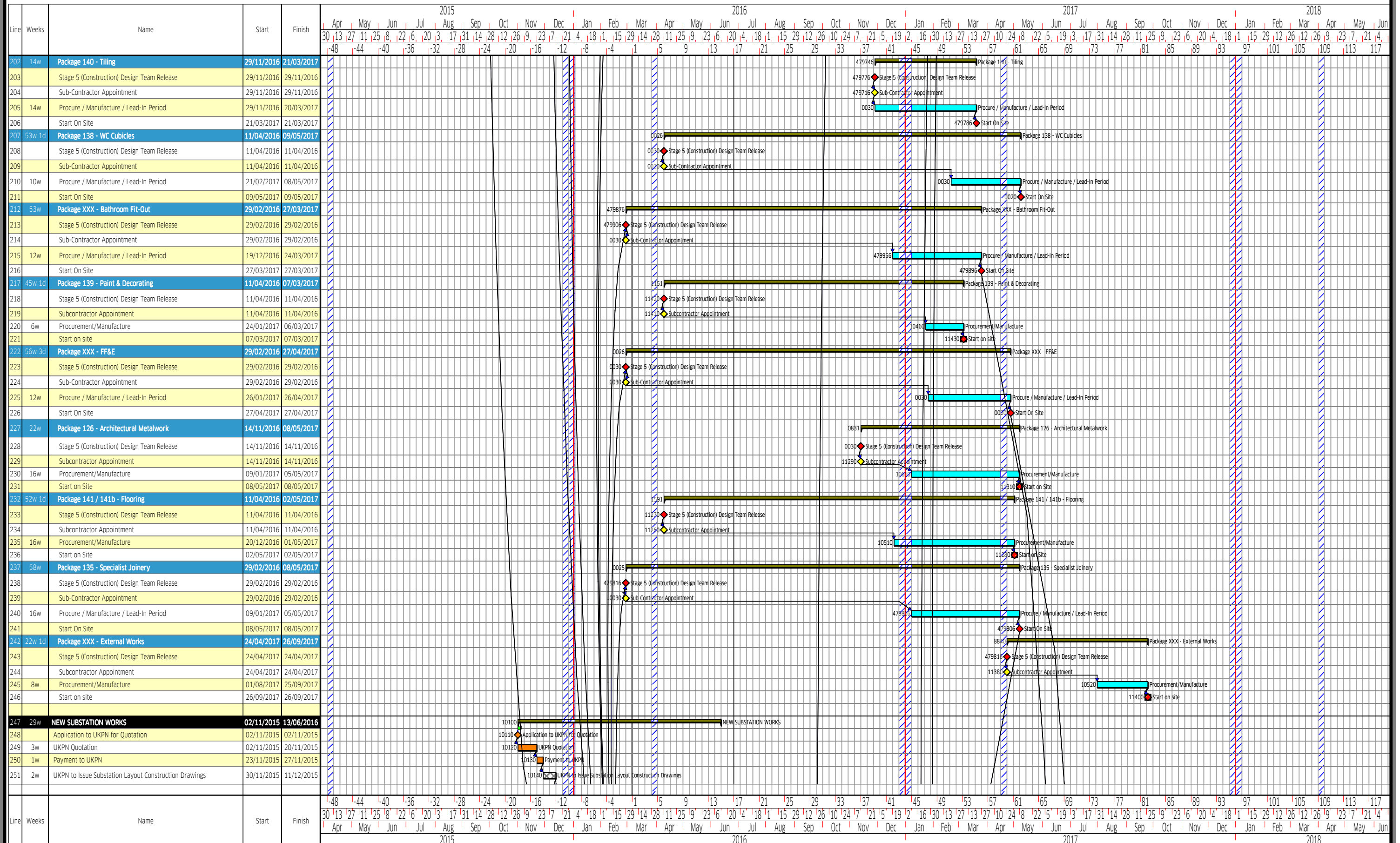
McLaren Construction Ltd
4th Floor
10 Chiswell Street
London, EC1Y 4UQ

www.mclarengroup.com
enquiries@mclarengroup.com
Tel: +44 (0)207 078 6963

CAMDEN TOWN HALL ANNEXE

CROSSTREE

REVISED SEQUENCE PROGRAMME



Project: Camden Town Hall Annexe, for Crosstree

DRAWN BY:
SJB

PROG REF:
M1400-CP-001

REVISION NO:
-

Issue Date:
16/02/2016

PROGRAMME COMMENT / STATUS:



McLaren Construction Ltd
4th Floor
10 Chiswell Street
London, EC1Y 4UQ

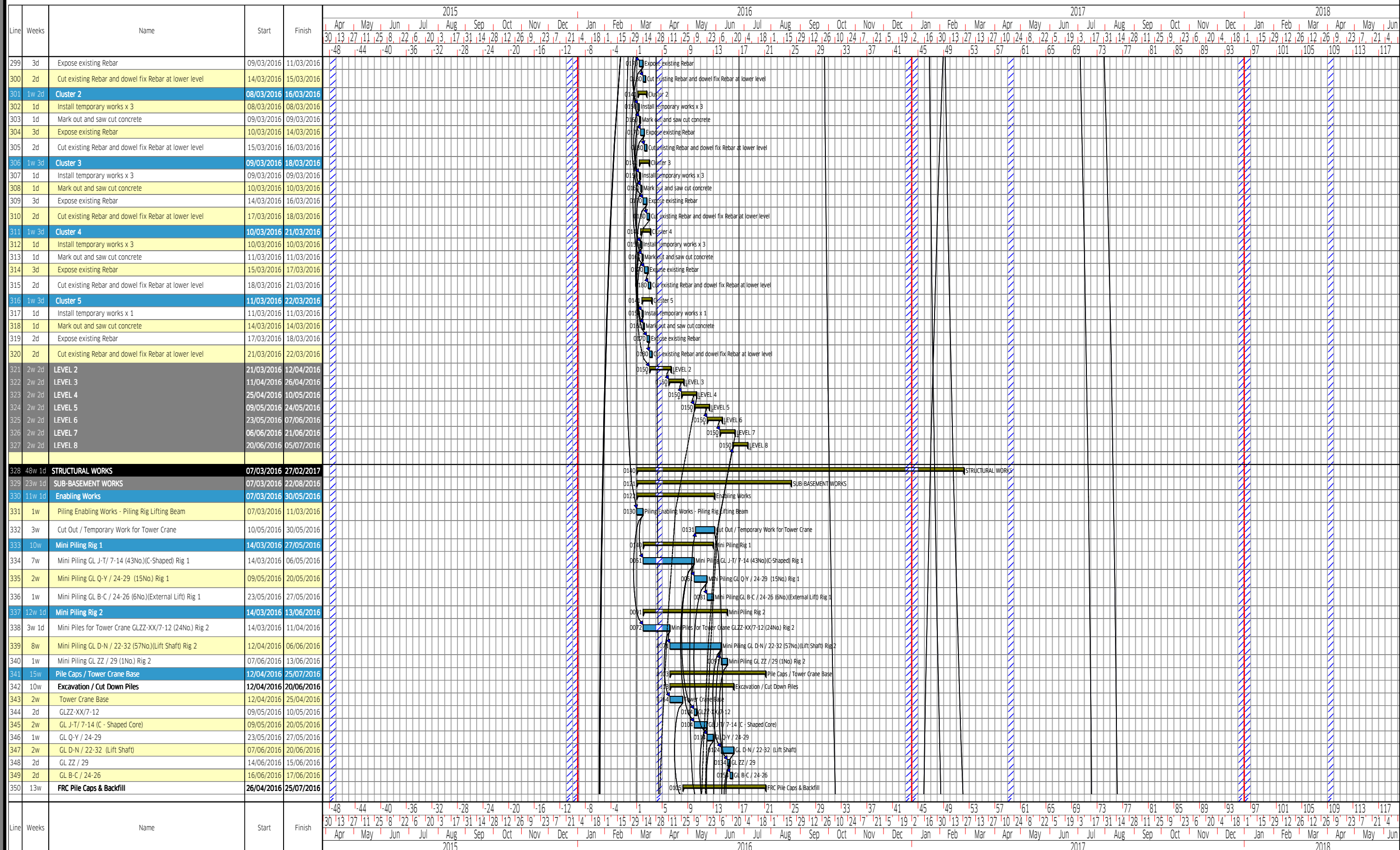
www.mclarengroup.com
enquiries@mclarengroup.com
Tel: +44 (0)207 078 6963

CAMDEN TOWN HALL ANNEXE

CROSSTREE

REVISED SEQUENCE PROGRAMME

MCLAREN



Project: Camden Town Hall Annexe, for Crosstree

DRAWN BY:
SJB

PROG REF:
M1400-CP-001

REVISION NO:

-

Issue Date:
16/02/2016

PROGRAMME COMMENT / STATUS:

MCLAREN

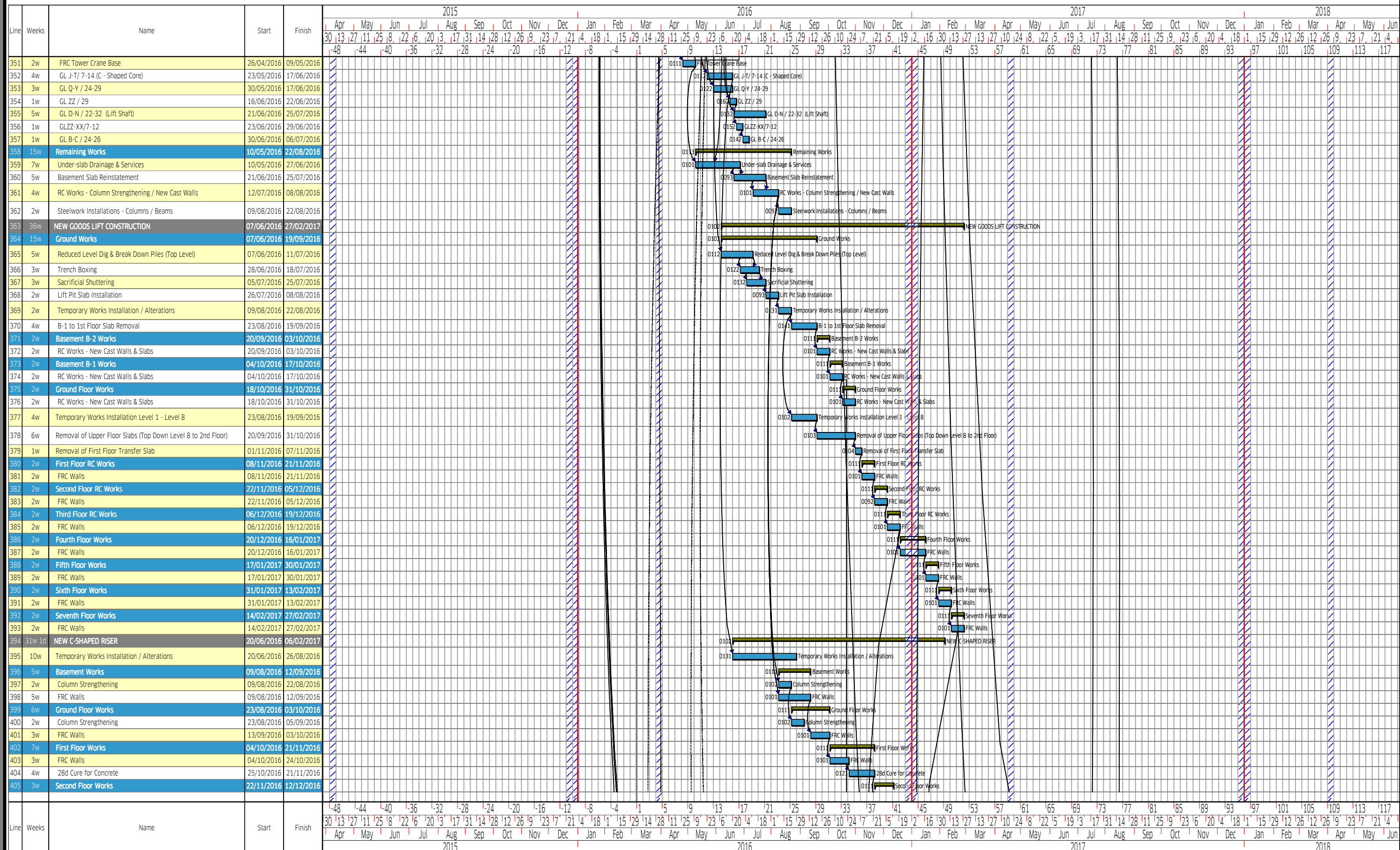
McLaren Construction Ltd
4th Floor
10 Chiswell Street
London, EC1Y 4UQ

www.mclarengroup.com
enquiries@mclarengroup.com
Tel: +44 (0)207 078 6963

CAMDEN TOWN HALL ANNEXE

CROSSTREE

REVISED SEQUENCE PROGRAMME



Project: Camden Town Hall Annexe, for Crosstree

DRAWN BY:

SJB

PROG REF:

M1400-CP-001

REVISION NO:

-

Issue Date:

16/02/2016

PROGRAMME COMMENT / STATUS:



McLaren Construction Ltd
4th Floor
10 Chiswell Street
London, EC1Y 4UQ

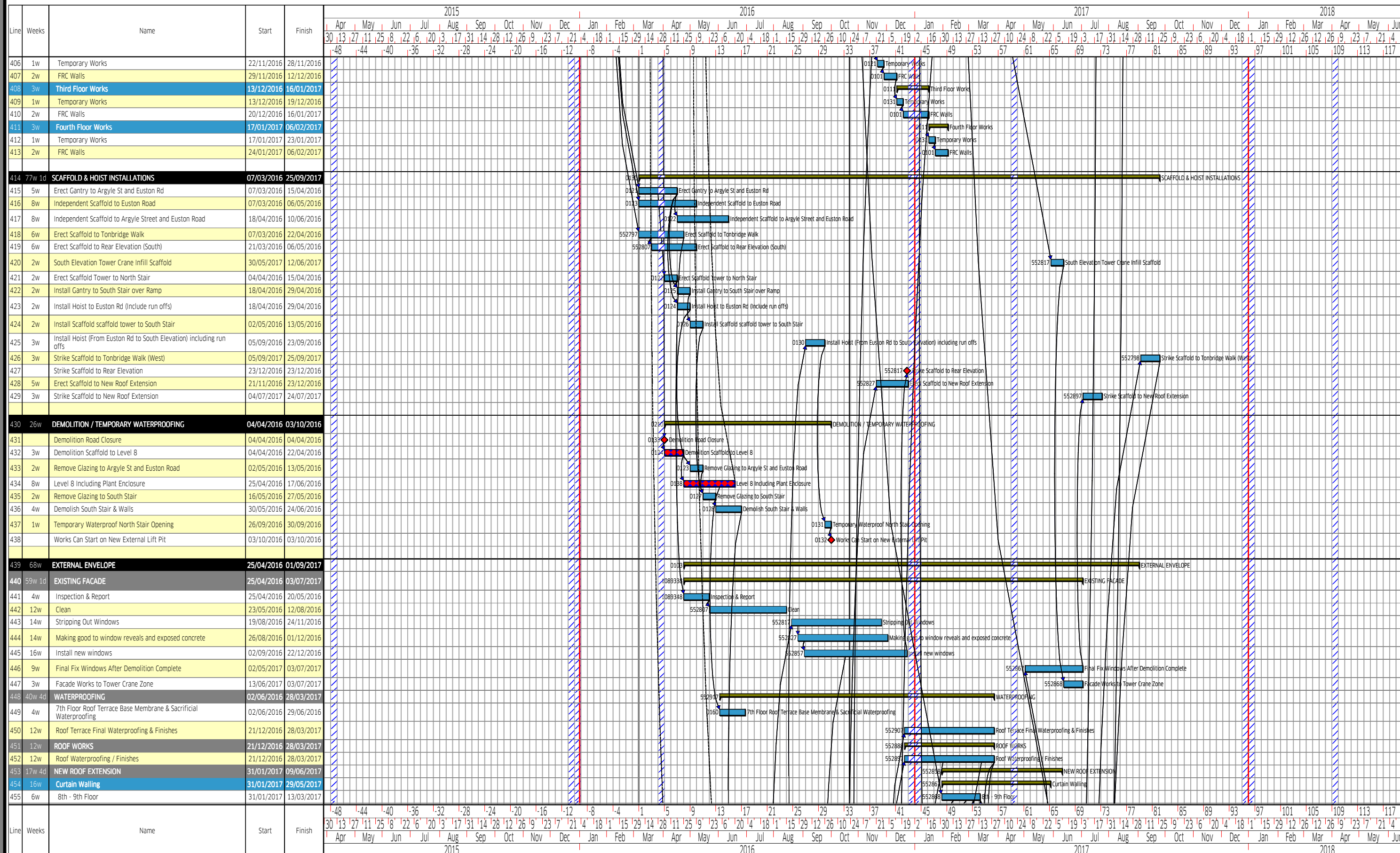
www.mclarengroup.com
enquiries@mclarengroup.com
Tel: +44 (0)207 078 6963

CAMDEN TOWN HALL ANNEXE

CROSSTREE

REVISED SEQUENCE PROGRAMME

MCLAREN



Project: Camden Town Hall Annexe, for Crosstree

DRAWN BY:

SJB

PROG REF:

M1400-CP-001

REVISION NO:

-

Issue Date:

16/02/2016

PROGRAMME COMMENT / STATUS:

MCLAREN

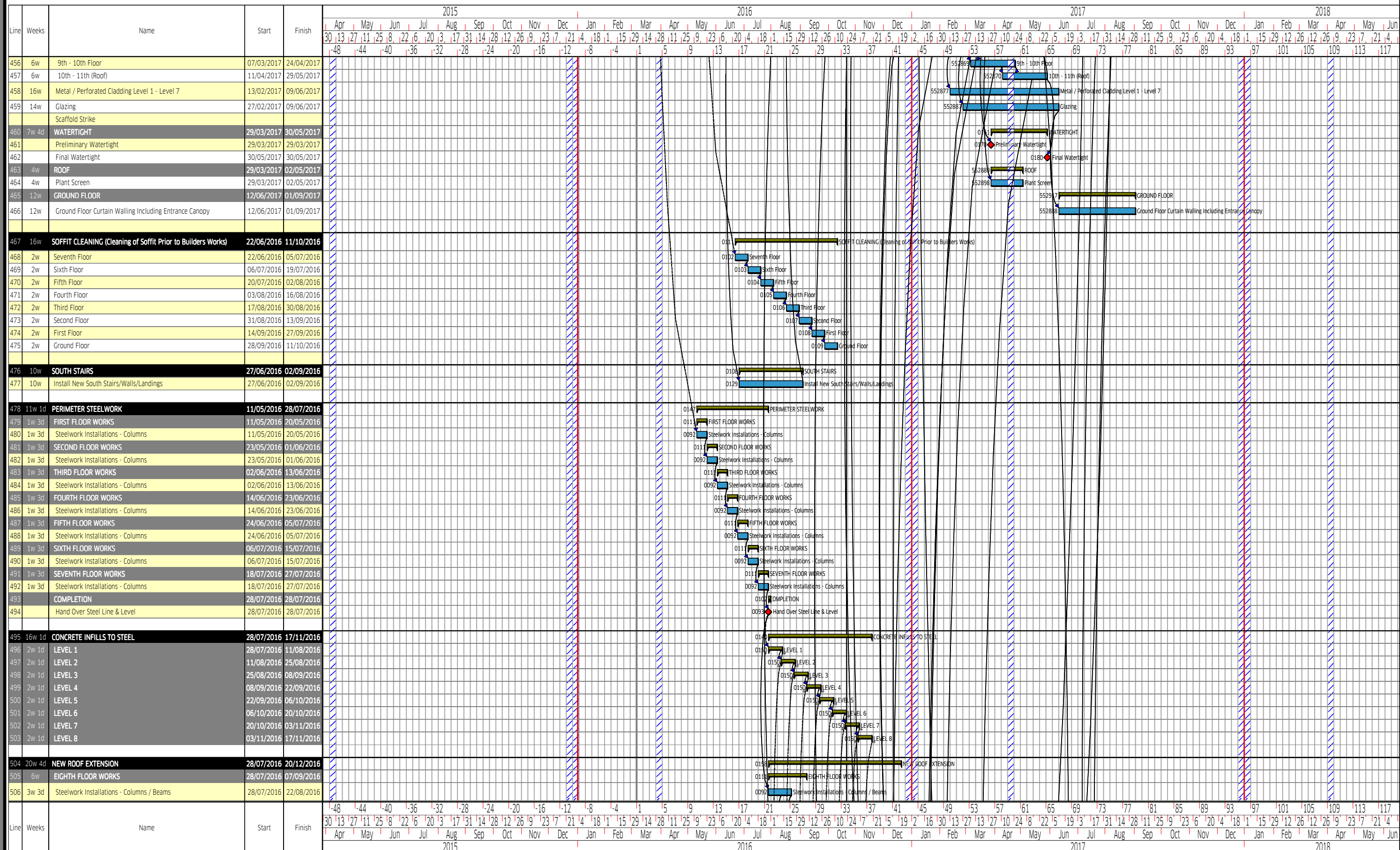
McLaren Construction Ltd
4th Floor
10 Chiswell Street
London, EC1Y 4UQ

www.mclarengroup.com
enquiries@mclarengroup.com
Tel: +44 (0)207 078 6963

CAMDEN TOWN HALL ANNEXE

CROSSTREE

REVISED SEQUENCE PROGRAMME



Project: Camden Town Hall Annexe, for Crosstree

DRAWN BY:

SJB

PROG REF:

M1400-CP-001

REVISION NO:

-

Issue Date:

16/02/2016

PROGRAMME COMMENT / STATUS:



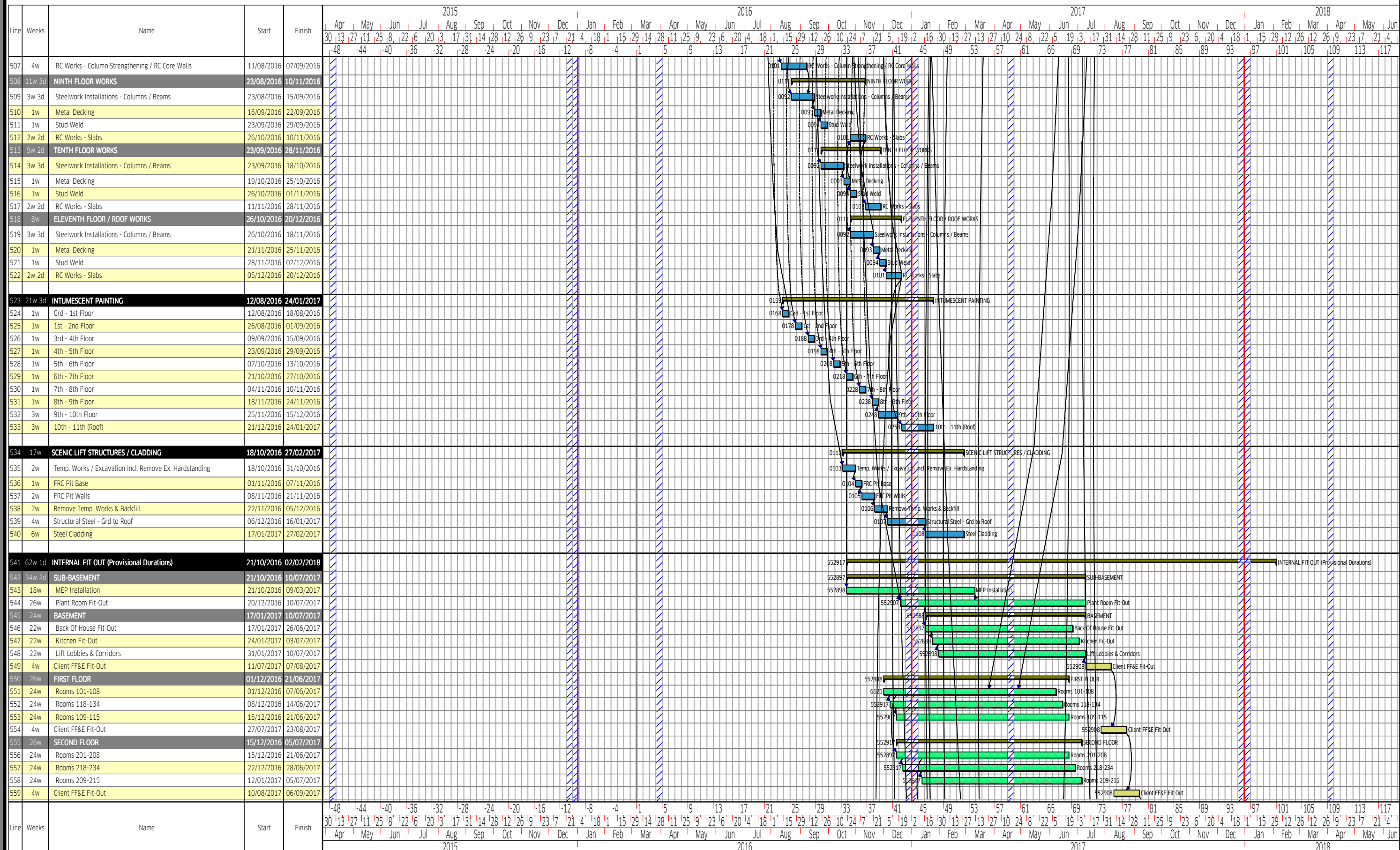
McLaren Construction Ltd
4th Floor
10 Chiswell Street
London, EC1Y 4UQ

www.mclarengroup.com
enquiries@mclarengroup.com
Tel: +44 (0)207 078 6963

CAMDEN TOWN HALL ANNEXE

CROSSTREE

REVISED SEQUENCE PROGRAMME



Project: Camden Town Hall Annexe, for Crosstree

DRAWN BY:

SJB

PROG REF:

M1400-CP-001

REVISION NO:

-

Issue Date:

16/02/2016

PROGRAMME COMMENT / STATUS:



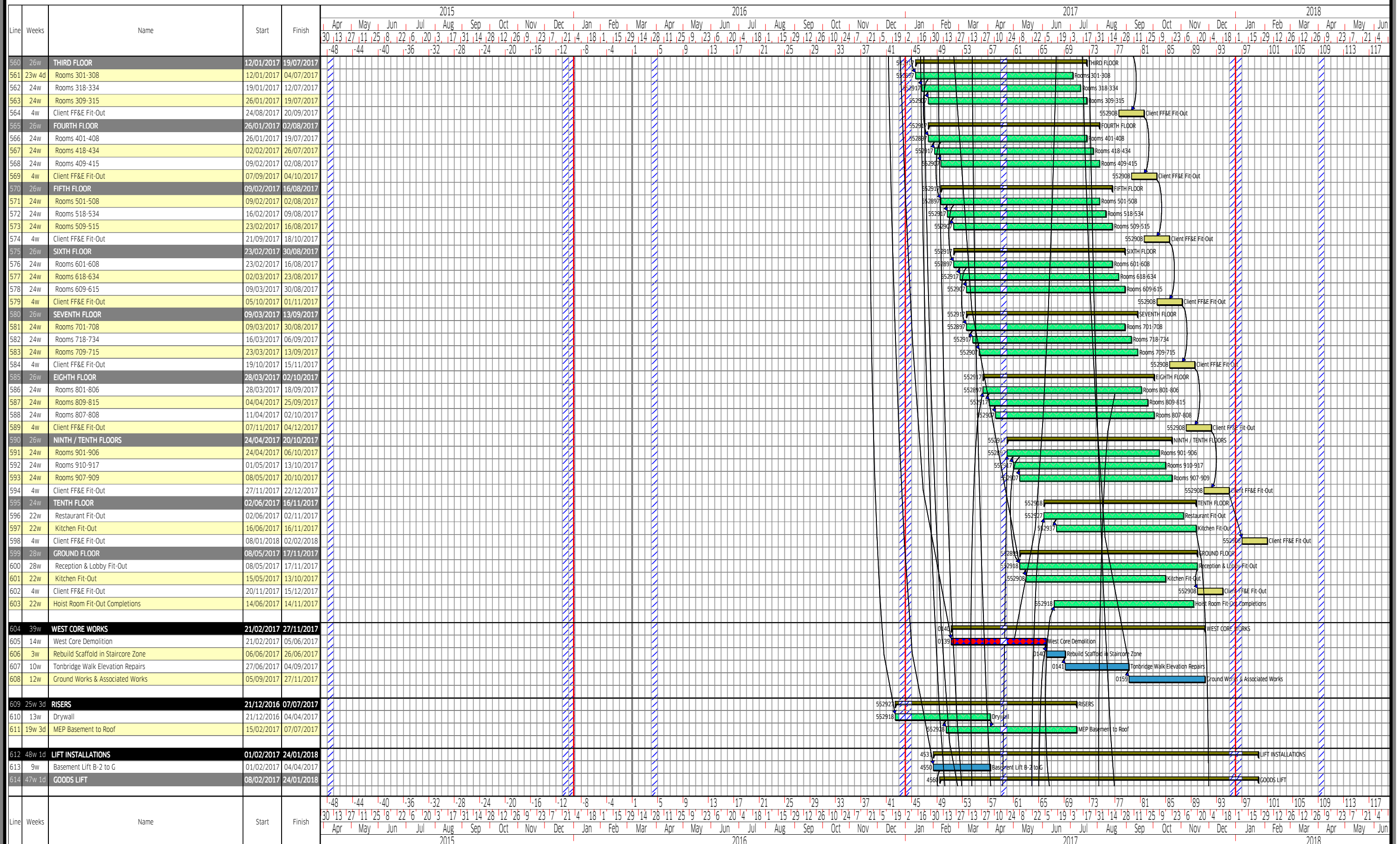
McLaren Construction Ltd
4th Floor
10 Chiswell Street
London, EC1Y 4UQ

www.mclarengroup.com
enquiries@mclarengroup.com
Tel: +44 (0)207 078 6963

CAMDEN TOWN HALL ANNEXE

CROSSTREE

REVISED SEQUENCE PROGRAMME



Project: Camden Town Hall Annexe, for Crosstree

DRAWN BY:
SJB

PROG REF:
M1400-CP-001

REVISION NO:
-

Issue Date:
16/02/2016

PROGRAMME COMMENT / STATUS:



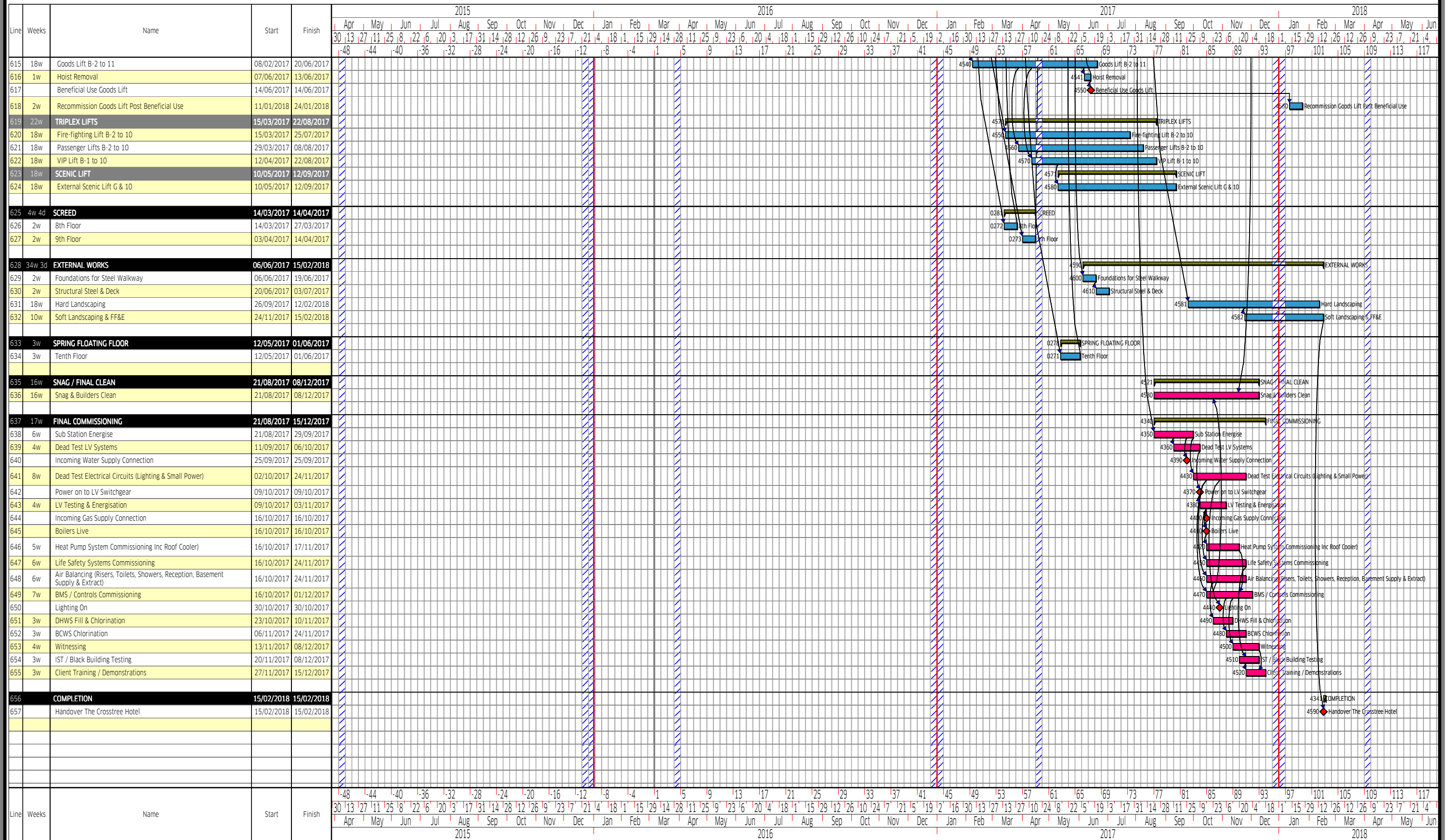
McLaren Construction Ltd
4th Floor
10 Chiswell Street
London, EC1Y 4UQ

www.mclarengroup.com
enquiries@mclarengroup.com
Tel: +44 (0)207 078 6963

CAMDEN TOWN HALL ANNEXE

CROSSTREE

REVISED SEQUENCE PROGRAMME



11 Summary	03 Construction	10 Milestone	92 Tender / Pricing	90 Design Info Required	94 Appear	97 Manufacture / Mobilise	25 Specialist S/C Design	95 Drawings / Samples	96 Drawing / Sample Approval	97 Manufacture/Mobilise	99 Start On Site
Planning	96 Drg/Samp Approval	01 Pre Construction	06 Fit Out Works	02 Enabling	Additional Demo Works	08 Client Migration / Training	07 Commission / Snag				

Project: Camden Town Hall Annexe, for Crosstree

DRAWN BY: SJB	PROG REF: M1400-CP-001	REVISION NO: -	Issue Date: 16/02/2016	PROGRAMME COMMENT / STATUS:		McLaren Construction Ltd 4th Floor 10 Chiswell Street London, EC1Y 4UQ	www.mclarengroup.com enquiries@mclarengroup.com Tel: +44 (0)207 078 6963
-------------------------	----------------------------------	--------------------------	----------------------------------	------------------------------------	--	---	--