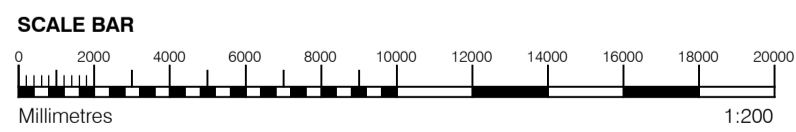




1 NORTH ELEVATION
1:200



2 NORTH SITE ELEVATION
1:500



GENERAL NOTES

- This drawing is copyright of PTE architects
- Use figured dimensions only. DO NOT SCALE.
- All dimensions are in millimetres unless noted otherwise
- All levels are in metres above ordnance datum unless noted otherwise
- This drawing must be read in conjunction with all other relevant drawings and specifications from the Architect and other consultants

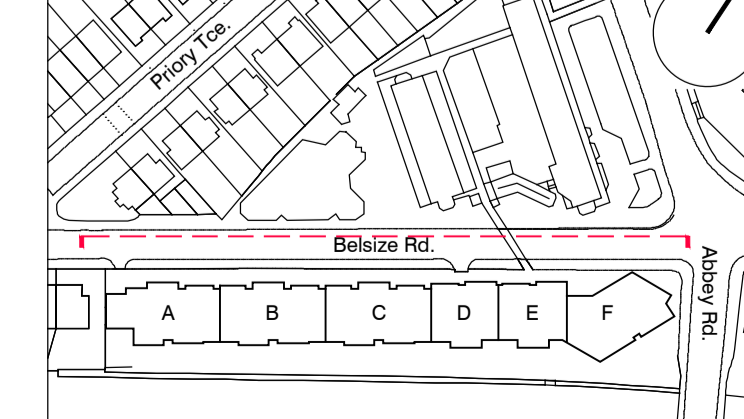
NOTES

- All setting out to be confirmed on site prior to construction - any discrepancy must be immediately reported to the Architect.

MATERIAL KEY

- A** - Brick work type 1: TYPE TO BE AGREED, stretcher bond brickwork with Cemex London White mortar or similar. Openings to have a deep brick reveal (approx 225mm unless stated otherwise).
- B** - Brick work type 2: TYPE TO BE AGREED but darker than Type 1, stretcher bond brickwork with Cemex London White mortar or similar. Allow for darker mortar to recessed brick walls. Openings to have a deep brick reveal (approx 225mm unless stated otherwise).
- C** - Glazed brickwork: TYPE TO BE AGREED, stack bonded, to Block F recessed balconies. Soffits to be brick slips (same brick specification as recessed walls), also stack bonded.
- D** - Metal panel: bronze effect panels with hidden fixings and minimal joints.
- E** - Shop front frameless glass curtain walling with 75mm aluminium capping at base, bronze effect aluminium framed double or triple glazed doors to match.
- F** - Windows / doors: bronze effect aluminium framed double or triple glazed units (manufacturer to be agreed).
- G** - Canopies: Pre-formed metal boxed canopy in bronze metallic finish with hidden structure and integral lighting.
- H** - Perforated metal balustrade or privacy screen: perforated metal (bronze metallic finish) supported off PPC coated frame with hidden fixings and minimal joints - allow for non-uniform setting out of perforations - details to be agreed.
- I** - Metal Railing Balustrade: formed from PPC vertical flats (approx 65 x 8mm)
- J** - Metal Railing Balustrade: formed from PPC vertical flats (approx 65 x 8mm) extending to balcony soffit with metal plate fascia fixed to balcony edge
- K** - Precast concrete or stone coping to parapet wall - allow for reinforcement back to structure.
- L** - Glass balustrade: frameless glass with no visible fixings.
- M** - Residential Entrances: Glazed brickwork - mixed colours TYPES TO BE AGREED, stack bonded. Through-the-wall mailbox system (DAD or similar) with one-piece front plate with integrated door entry system - Colour to be agreed.
- N** - Hit and miss brickwork wall to basement cycle store - free area to meet ventilation requirements to basement
- O** - 1.2 m high Fagus sylvatica (beech) instant hedge planted in a double staggered row
- P** - Reconstituted Stone on fixing ancon bracket to form architrave detail to concierge/supermarket/retail entrances
- Q** - Aluminium PPC louvred doors/panels to refuse store/car park ramp/fire exits

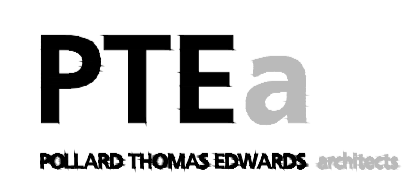
KEY PLAN



rev	date	description	dm	aut
B	04.10.13	5th floor Windows blocks A-E & FE doors in Block F	BM	DPD
A	02.09.13	Drawing amended and issued to design team for comment.	RL	DPD

PLANNING

project		job no.		drawn	audited	scale	date
ABBEY AREA REGENERATION-PHASE 1		12_510		BM	DPD	1:200@A1	JUL 13
dep title		drawing no.		rev			
GENERAL ARRANGEMENT NORTH ELEVATION & NORTH SITE ELEVATION		510_1_PL_300		B			



Casterbridge

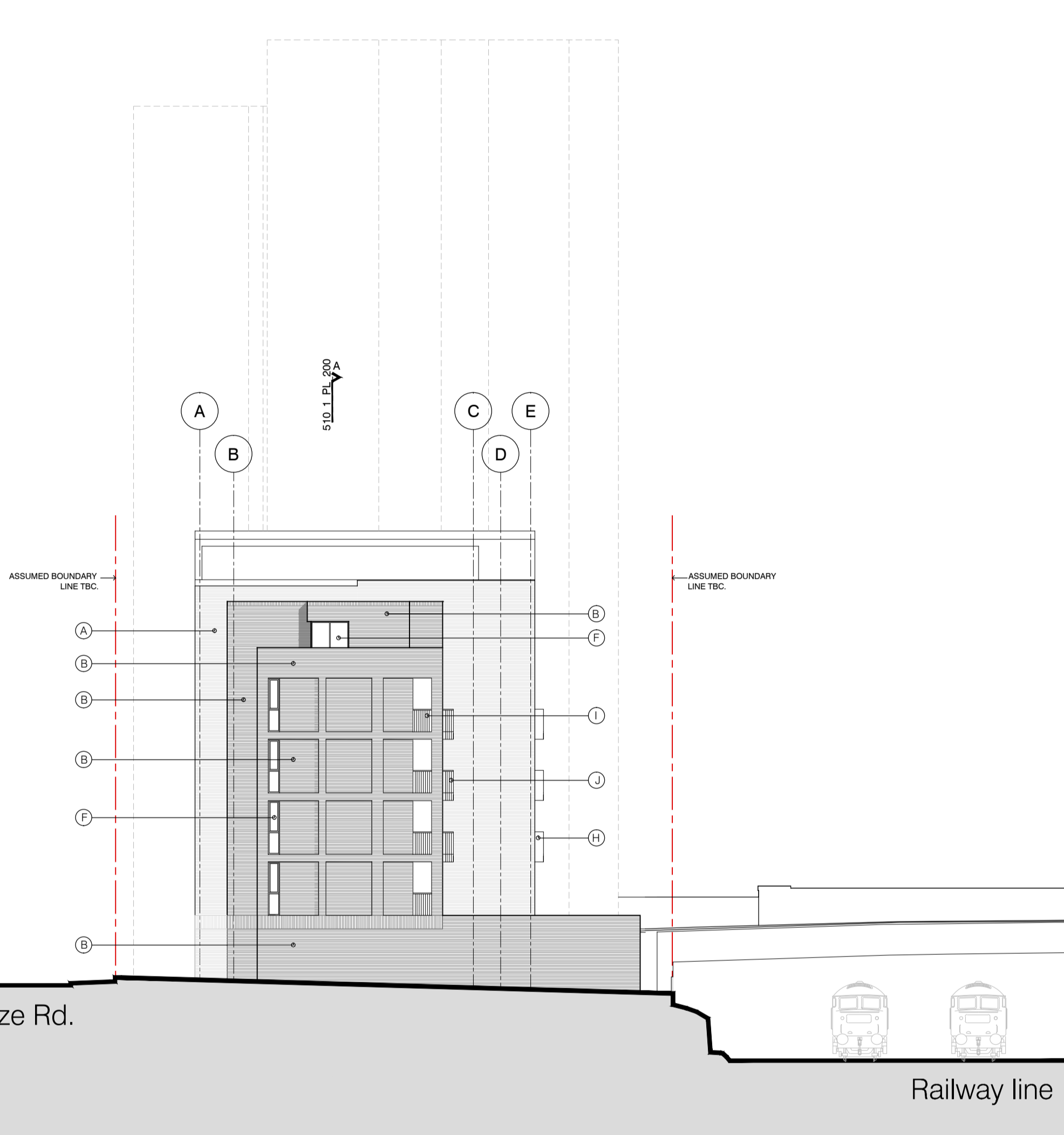
Emminster

Hinstock

2 Priory Tce.

Belsize Rd.

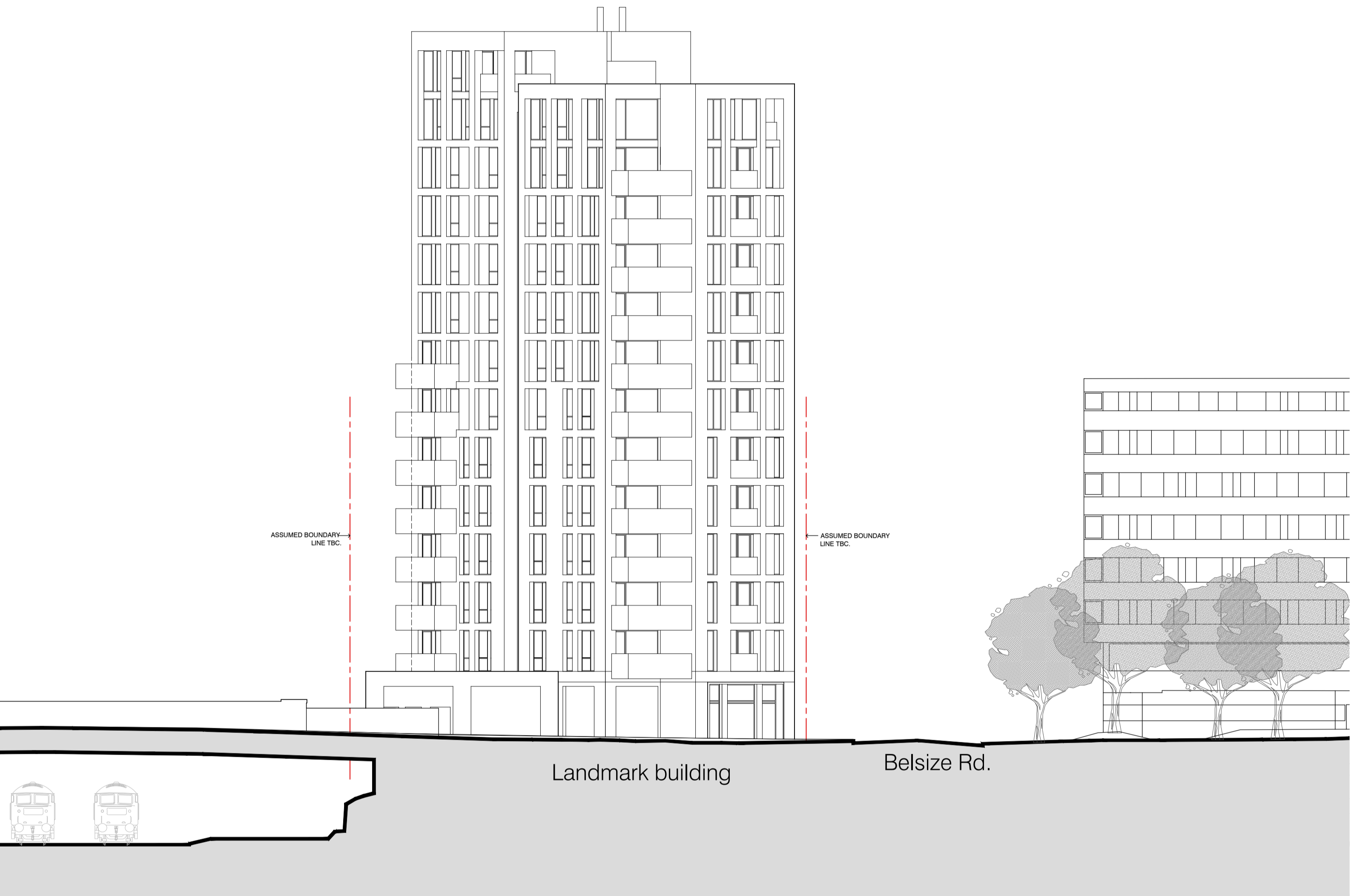
Railway line



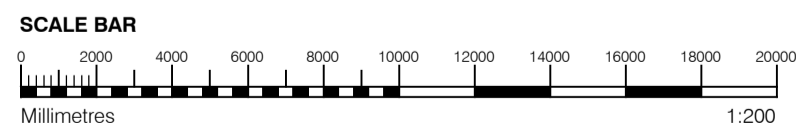
1 EAST ELEVATION
1:200

Landmark building

Belsize Rd.



2 WEST ELEVATION
1:200



GENERAL NOTES

- This drawing is copyright of PTE architects
- Use figured dimensions only. DO NOT SCALE.
- All dimensions are in millimetres unless noted otherwise
- All levels are in metres above ordnance datum unless noted otherwise
- This drawing must be read in conjunction with all other relevant drawings and specifications from the Architect and other consultants

NOTES

- All setting out to be confirmed on site prior to construction - any discrepancy must be immediately reported to the Architect.

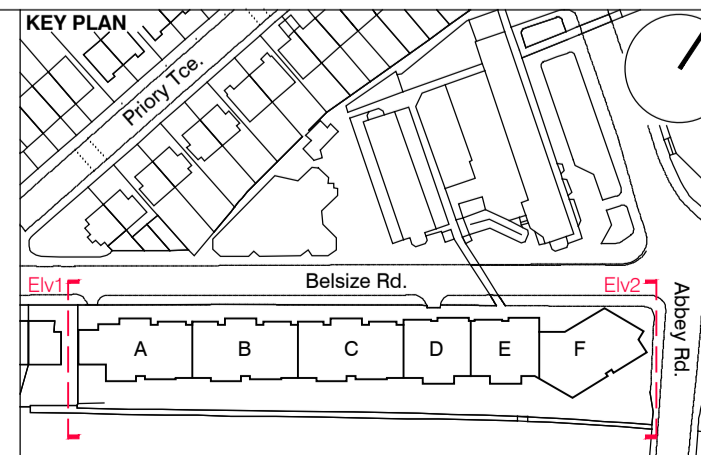
MATERIAL KEY

- A** - Brick work type 1: TYPE TO BE AGREED, stretcher bond brickwork with Cemex London White mortar or similar. Openings to have a deep brick reveal (approx 225mm unless stated otherwise).
- B** - Brick work type 2: TYPE TO BE AGREED but darker than Type 1, stretcher bond brickwork with Cemex London White mortar or similar. Allow for darker mortar to recessed brick walls. Openings to have a deep brick reveal (approx 225mm unless stated otherwise).
- C** - Glazed brickwork: TYPE TO BE AGREED, stack bonded, to Block F recessed balconies. Soffits to be brick slips (same brick specification as recessed walls), also stack bonded.
- D** - Metal panel: bronze effect panels with hidden fixings and minimal joints.
- E** - Shop front frameless glass curtain walling with 75mm aluminum capping at base, bronze effect aluminum framed double or triple glazed doors to match.
- F** - Windows / doors: bronze effect aluminum framed double or triple glazed units (manufacturer to be agreed).
- G** - Canopies: Pre-formed metal boxed canopy in bronze metallic finish with hidden structure and integral lighting.
- H** - Perforated metal balustrade or privacy screen: perforated metal (bronze metallic finish) supported off PPC coated frame with hidden fixings and minimal joints - allow for non-uniform setting out of perforations - details to be agreed, details to be agreed.

- I** - Metal Railing Balustrade: formed from PPC vertical flats (approx 65 x 8mm)
- J** - Metal Railing Balustrade: formed from PPC vertical flats (approx 65 x 8mm) extending to balcony soffit with metal plate fascia fixed to balcony edge
- K** - Precast concrete or stone coping to parapet wall - allow for reinforcement back to structure.
- L** - Glass balustrade: frameless glass with no visible fixings.

- M** - Residential Entrances: Glazed brickwork - mixed colours TYPES TO BE AGREED, stack bonded. Through-the-wall mailbox system (DAD or similar) with one-piece front plate with integrated door entry system - Colour to be agreed.
- N** - Hit and miss brickwork wall to basement cycle store - free area to meet ventilation requirements to basement
- O** - 1.2 m high *Fagus sylvatica* (beech) instant hedge planted in a double staggered row

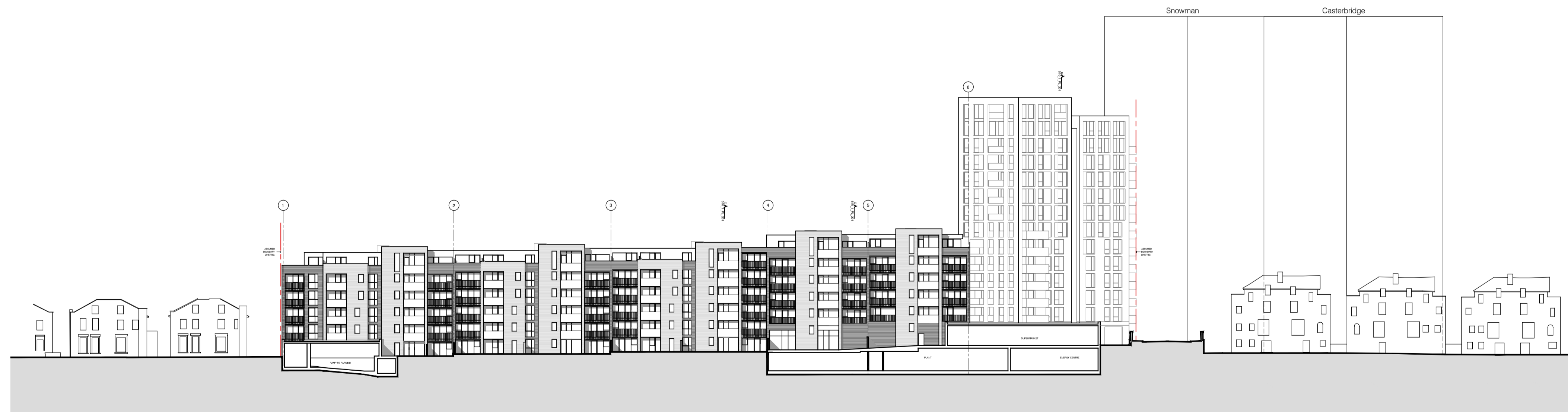
- P** - Reconstituted Stone on fixing ancon bracket to form architrave detail to concierge/supermarket/retail entrances
- Q** - Aluminium PPC louvred doors/panels to refuse store/car park ramp/fire exits



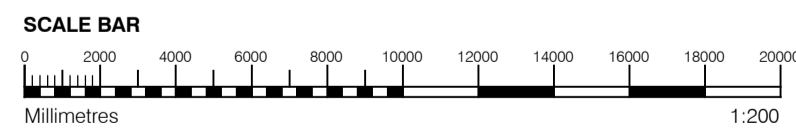
rev	date	description	dm	aud
PLANNING				
Drawing status Diespiker Wharf 38 Graham Street London N1 8JX t: 020 7336 7777 w: www.ptea.co.uk f: 020 7336 0770 e: forename.surname@ptea.co.uk				
PTEa POLLARD THOMAS EDWARDS architects				
project	12_510	drawn	LG	audited
scale	1:200@A1	date	JUL 13	
stage title	GENERAL ARRANGEMENT EAST ELEVATION, WEST ELEVATION	fig no	510_1_PL_301	rev
				/



1 SOUTH ELEVATION
1:200



2 SOUTH SITE ELEVATION
1:500



GENERAL NOTES

- This drawing is copyright of PTE architects
- Use figured dimensions only. DO NOT SCALE.
- All dimensions are in millimetres unless noted otherwise
- All levels are in metres above ordnance datum unless noted otherwise
- This drawing must be read in conjunction with all other relevant drawings and specifications from the Architect and other consultants

NOTES

- All setting out to be confirmed on site prior to construction - any discrepancy must be immediately reported to the Architect.

MATERIAL KEY

A - Brick work type 1: TYPE TO BE AGREED, stretcher bond brickwork with Cemex London White mortar or similar. Openings to have a deep brick reveal (approx 225mm unless stated otherwise).

B - Brick work type 2: TYPE TO BE AGREED but darker than Type 1, stretcher bond brickwork with Cemex London White mortar or similar. Allow for darker mortar to recessed brick walls. Openings to have a deep brick reveal (approx 225mm unless stated otherwise).

C - Glazed brickwork: TYPE TO BE AGREED, stack bonded, to Block F recessed balconies. Soffits to be brick slips (same brick specification as recessed walls), also stack bonded.

D - Metal panel: bronze effect panels with hidden fixings and minimal joints.

E - Shop front frameless glass curtain walling with 75mm aluminum capping at base, bronze effect aluminum framed double or triple glazed doors to match.

F - Windows / doors: bronze effect aluminum framed double or triple glazed units (manufacturer to be agreed).

G - Canopies: Pre-formed metal boxed canopy in bronze metallic finish with hidden structure and integral lighting.

H - Perforated metal balustrade or privacy screen: perforated metal (bronze metallic finish) supported off PPC coated frame with hidden fixings and minimal joints - allow for non-uniform setting out of perforations - details to be agreed.

I - Metal Railing Balustrade: formed from PPC vertical flats (approx 65 x 8mm)

J - Metal Railing Balustrade: formed from PPC vertical flats (approx 65 x 8mm) extending to balcony soffit with metal plate fascia fixed to balcony edge

K - Precast concrete or stone coping to parapet wall - allow for reinforcement back to structure.

L - Glass balustrade: frameless glass with no visible fixings.

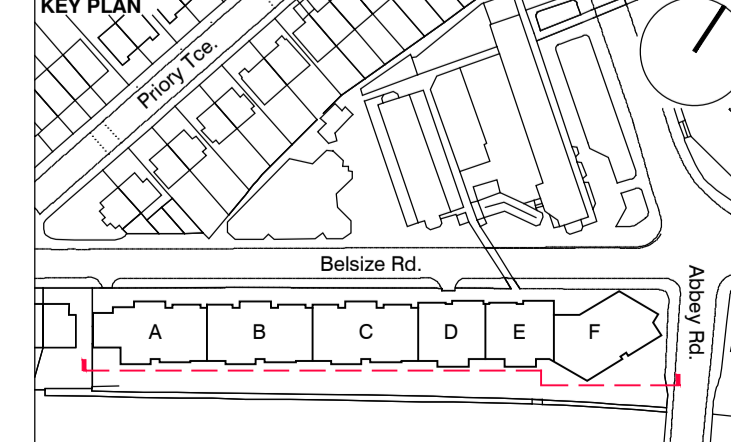
M - Residential Entrances: Glazed brickwork - mixed colours TYPES TO BE AGREED, stack bonded. Through-the-wall mailbox system (DAD or similar) with one-piece front plate with integrated door entry system - Colour to be agreed.

N - Hit and miss brickwork wall to basement cycle store - free area to meet ventilation requirements to basement

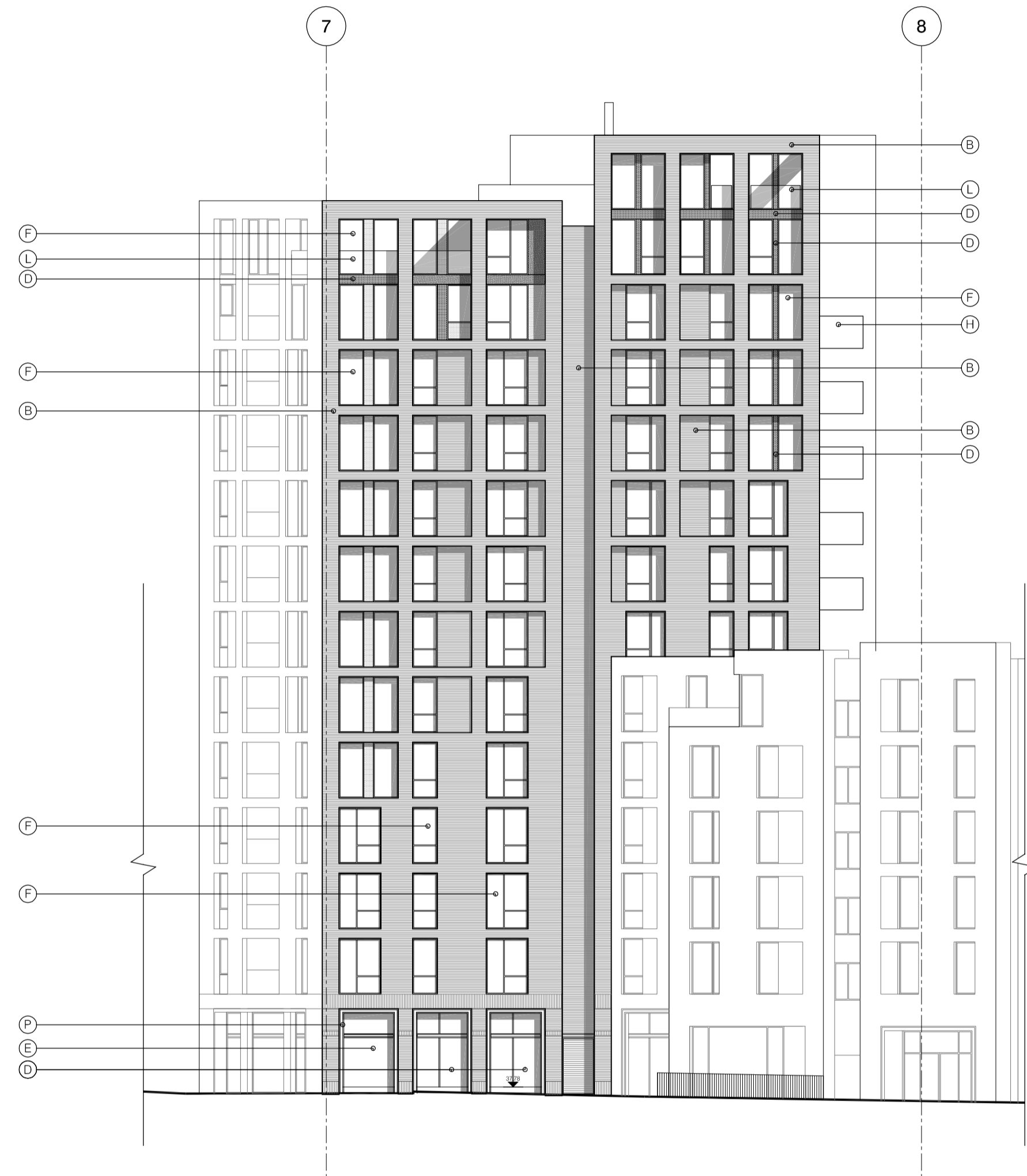
O - 1.2 m high Fagus sylvatica (beech) instant hedge planted in a double staggered row

P - Reconstituted Stone on fixing ancon bracket to form architrave detail to concierge/supermarket/retail entrances

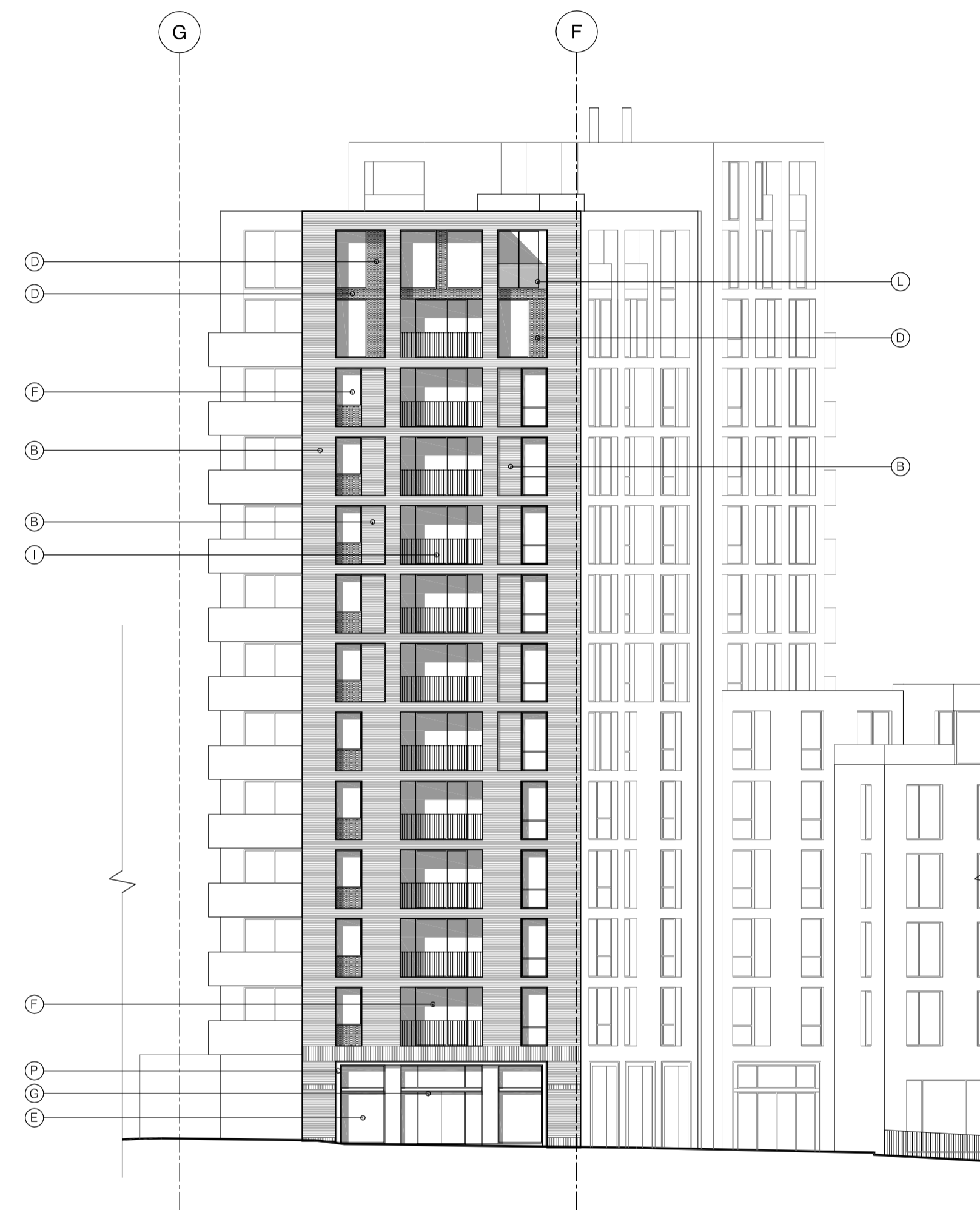
Q - Aluminium PPC louvred doors/panels to refuse store/car park ramp/fire exits



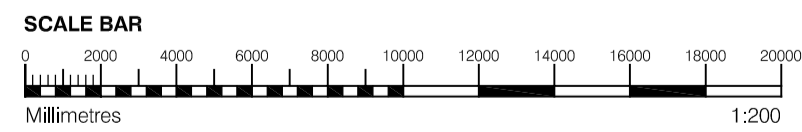
rev	date	description	dm	aut
B	04.10.13	Issue for information	BM	DPD
A	02.09.13	Drawing amended and issued to design team for comment.	RL	DPD
PLANNING				
project: ABBEY AREA REGENERATION-PHASE 1 location: LONDON job no.: 12_510 drawn: LG audited: DPD scale: 1:200@A1 date: JUL 13 dep title: GENERAL ARRANGEMENT SOUTH ELEVATION & SOUTH SITE ELEVATIONS fig. no.: 510_1_PL_302 rev: B				
Dispeker Wharf 38 Graham Street London N1 8JX t: 020 7336 7777 f: 020 7336 0770 www.ptea.co.uk e: forename.surname@ptea.co.uk			PTEa POLLARD THOMAS EDWARDS architects	



1 LANDMARK BUILDING TRUE ELEVATION- NORTH
1:200



2 LANDMARK BUILDING TRUE ELEVATION- EAST
1:200



GENERAL NOTES

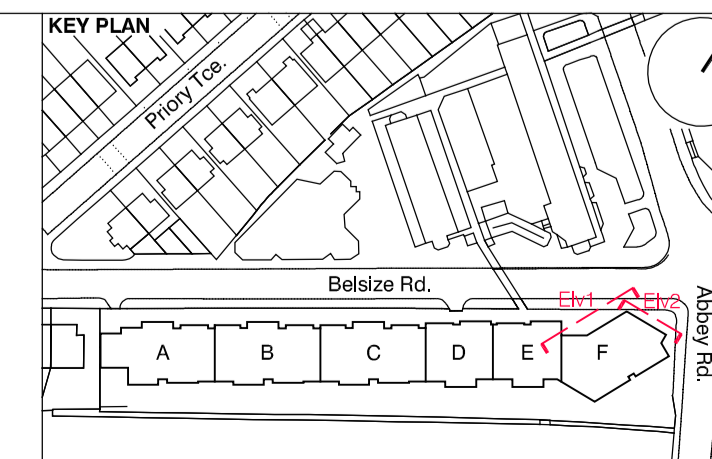
- This drawing is copyright of PTE architects
- Use figured dimensions only. DO NOT SCALE.
- All dimensions are in millimetres unless noted otherwise
- All levels are in metres above ordnance datum unless noted otherwise
- This drawing must be read in conjunction with all other relevant drawings and specifications from the Architect and other consultants

NOTES

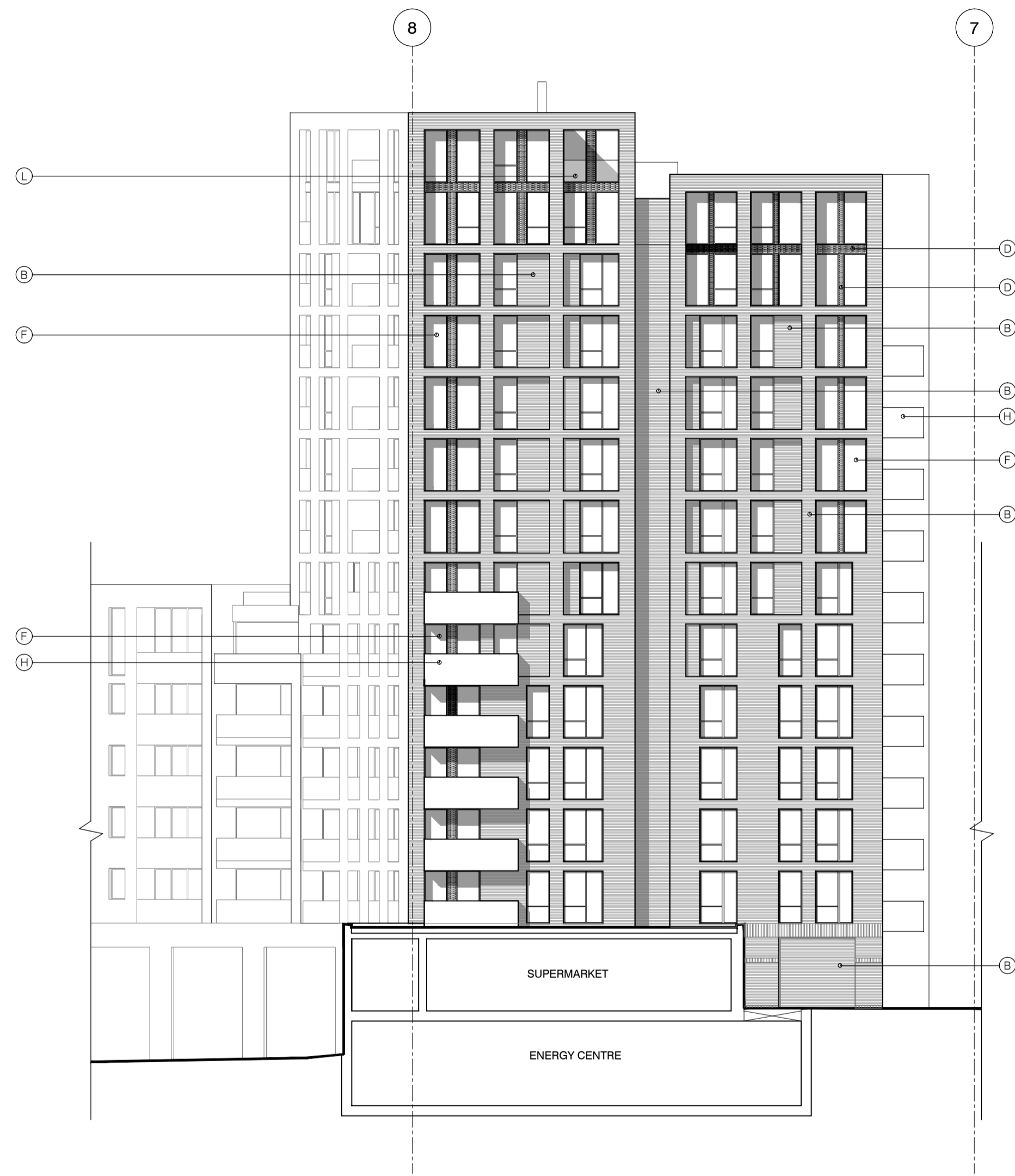
- All setting out to be confirmed on site prior to construction - any discrepancy must be immediately reported to the Architect.

MATERIAL KEY

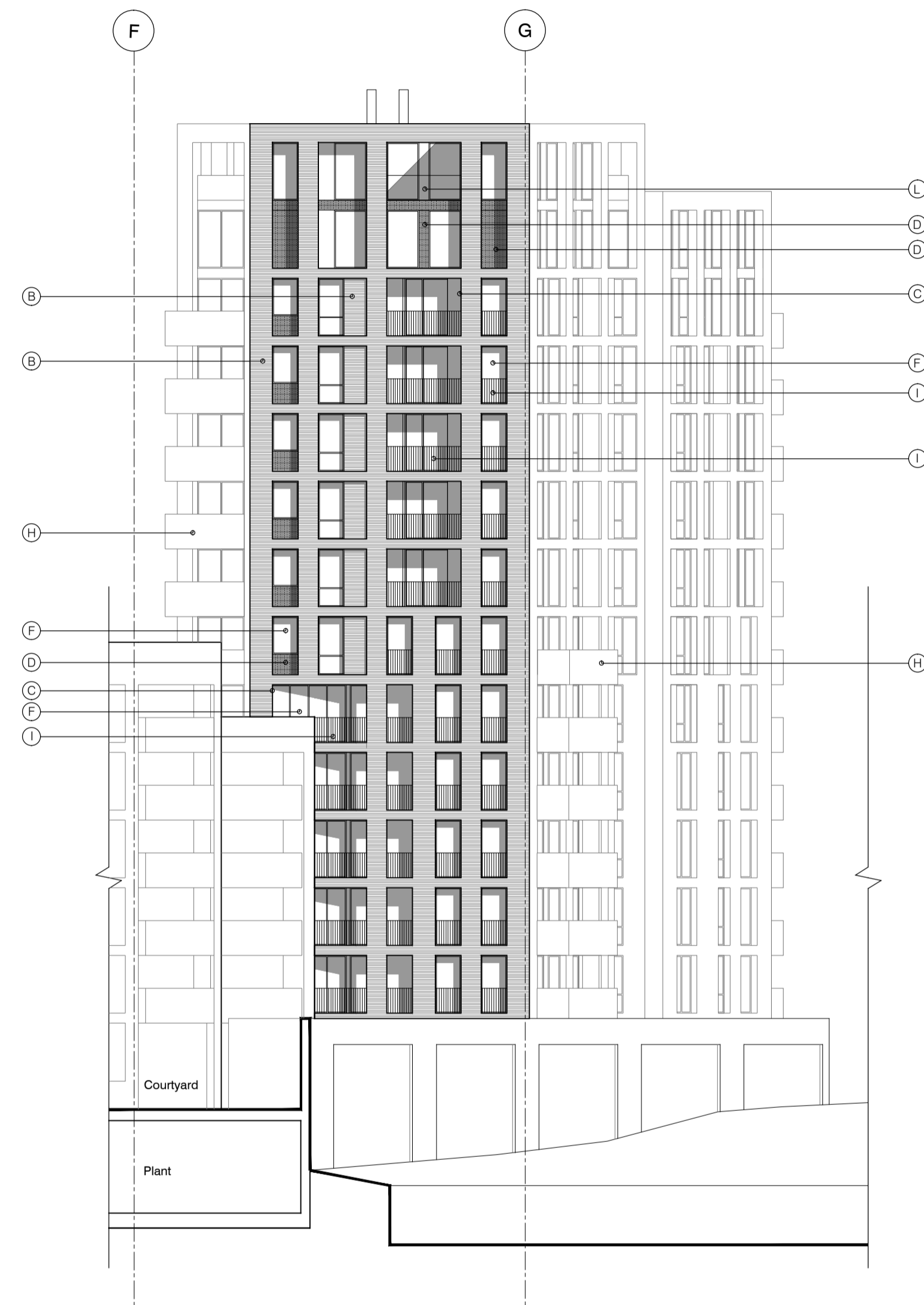
- A** - Brick work type 1: TYPE TO BE AGREED, stretcher bond brickwork with Cemex London White mortar or similar. Openings to have a deep brick reveal (approx 225mm unless stated otherwise).
- B** - Brick work type 2: TYPE TO BE AGREED but darker than Type 1, stretcher bond brickwork with Cemex London White mortar or similar. Allow for darker mortar to recessed brick walls. Openings to have a deep brick reveal (approx 225mm unless stated otherwise).
- C** - Glazed brickwork: TYPE TO BE AGREED, stack bonded, to Block F recessed balconies. Soffits to be brick slips (same brick specification as recessed walls), also stack bonded.
- D** - Metal panel: bronze effect panels with hidden fixings and minimal joints.
- E** - Shop front frameless glass curtain walling with 75mm aluminum capping at base, bronze effect aluminum framed double or triple glazed doors to match.
- F** - Windows / doors: bronze effect aluminum framed double or triple glazed units (manufacturer to be agreed).
- G** - Canopies: Pre-formed metal boxed canopy in bronze metallic finish with hidden structure and integral lighting.
- H** - Perforated metal balustrade or privacy screen; perforated metal (bronze metallic finish) supported off PPC coated frame with hidden fixings and minimal joints - allow for non-uniform setting out of perforations - details to be agreed.
- I** - Metal Railing Balustrade: formed from PPC vertical flats (approx 65 x 8mm)
- J** - Metal Railing Balustrade: formed from PPC vertical flats (approx 65 x 8mm) extending to balcony soffit with metal plate fascia fixed to balcony edge
- K** - Precast concrete or stone coping to parapet wall - allow for reinforcement back to structure.
- L** - Glass balustrade: frameless glass with no visible fixings.
- M** - Residential Entrances: Glazed brickwork - mixed colours TYPES TO BE AGREED, stack bonded. Through-the-wall mailbox system (DAD or similar) with one-piece front plate with integrated door entry system - Colour to be agreed.
- N** - Hit and miss brickwork wall to basement cycle store - free area to meet ventilation requirements to basement
- O** - 1.2 m high Fagus sylvatica (beech) instant hedge planted in a double staggered row
- P** - Reconstituted Stone on fixing ancon bracket to form architrave detail to concierge/supermarket/retail entrances
- Q** - Aluminium PPC louvred doors/panels to refuse store/car park ramp/fire exits



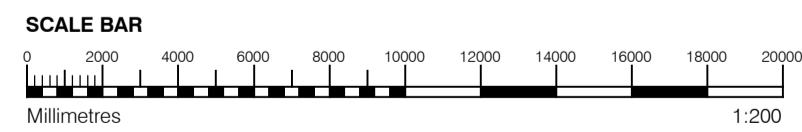
rev.	date	description	drawing status	dm	aud
B	08.10.13	Issue for information	PLANNING	BM	DPD
A	04.10.13	Block F Fire exit elevation		BM	DPD
<p>project: ABBEY AREA REGENERATION-PHASE 1 job no: 12_510 drawn: BM audited: DPD scale: 1:200@A1 date: JUL 13</p> <p>client: Diespeker Wharf 38 Graham Street London N1 8JX t: 020 7336 7777 f: 020 7336 0770 w: www.ptea.co.uk e: forename.surname@ptea.co.uk</p> <p>design title: GENERAL ARRANGEMENT LANDMARK BUILDING TRUE ELEVATION-NORTH & EAST</p> <p>fig. no: 510_1_PL_303 rev: B</p>					



1 LANDMARK BUILDING TRUE ELEVATION- SOUTH
1:200



2 LANDMARK BUILDING TRUE ELEVATION- WEST
1:200



GENERAL NOTES

- This drawing is copyright of PTE architects
- Use figured dimensions only. DO NOT SCALE.
- All dimensions are in millimetres unless noted otherwise
- All levels are in metres above ordnance datum unless noted otherwise
- This drawing must be read in conjunction with all other relevant drawings and specifications from the Architect and other consultants

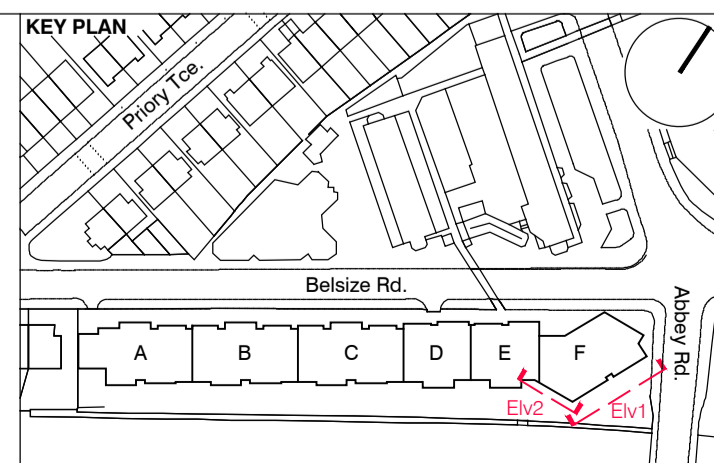
NOTES

- All setting out to be confirmed on site prior to construction - any discrepancy must be immediately reported to the Architect.

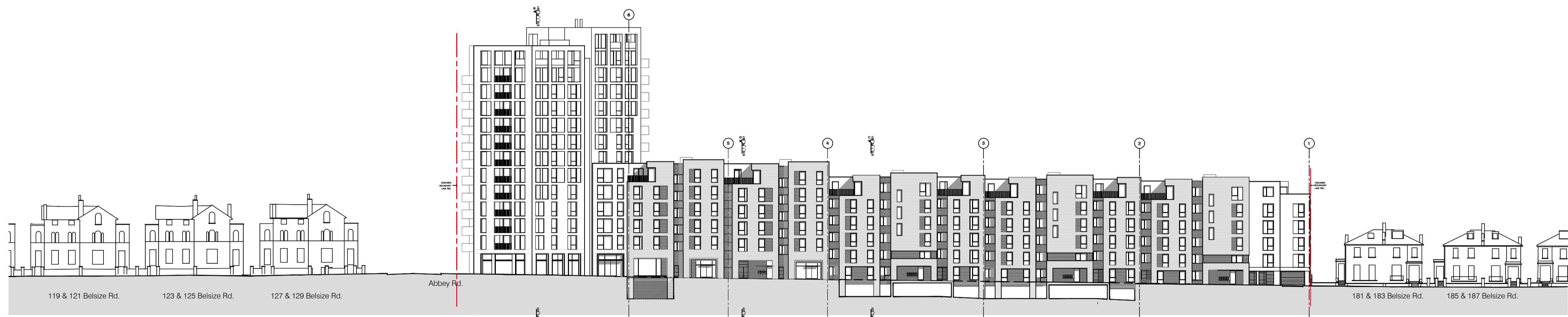
MATERIAL KEY

- A** - Brick work type 1: TYPE TO BE AGREED, stretcher bond brickwork with Cemex London White mortar or similar. Openings to have a deep brick reveal (approx 225mm unless stated otherwise).
- B** - Brick work type 2: TYPE TO BE AGREED but darker than Type 1, stretcher bond brickwork with Cemex London White mortar or similar. Allow for darker mortar to recessed brick walls. Openings to have a deep brick reveal (approx 225mm unless stated otherwise).
- C** - Glazed brickwork: TYPE TO BE AGREED, stack bonded, to Block F recessed balconies. Soffits to be brick slips (same brick specification as recessed walls), also stack bonded.
- D** - Metal panel: bronze effect panels with hidden fixings and minimal joints.
- E** - Shop front frameless glass curtain walling with 75mm aluminum capping at base, bronze effect aluminum framed double or triple glazed doors to match.
- F** - Windows / doors: bronze effect aluminum framed double or triple glazed units (manufacturer to be agreed).
- G** - Canopies: Pre-formed metal boxed canopy in bronze metallic finish with hidden structure and integral lighting.
- H** - Perforated metal balustrade or privacy screen: perforated metal (bronze metallic finish) supported off PPC coated frame with hidden fixings and minimal joints - allow for non-uniform setting out of perforations - details to be agreed.
- I** - Metal Railing Balustrade: formed from PPC vertical flats (approx 65 x 8mm)
- J** - Metal Railing Balustrade: formed from PPC vertical flats (approx 65 x 8mm) extending to balcony soffit with metal plate fascia fixed to balcony edge
- K** - Precast concrete or stone coping to parapet wall - allow for reinforcement back to structure.
- L** - Glass balustrade: frameless glass with no visible fixings.

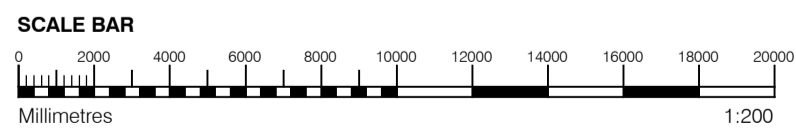
- M** - Residential Entrances: Glazed brickwork - mixed colours TYPES TO BE AGREED, stack bonded. Through-the-wall mailbox system (DAD or similar) with one-piece front plate with integrated door entry system - Colour to be agreed.
- N** - Hit and miss brickwork wall to basement cycle store - free area to meet ventilation requirements to basement
- O** - 1.2 m high Fagus sylvatica (beech) instant hedge planted in a double staggered row
- P** - Reconstituted Stone on fixing ancon bracket to form architrave detail to concierge/supermarket/retail entrances
- Q** - Aluminium PPC louvred doors/panels to refuse store/car park ramp/fire exits



rev	date	description	dm	aud
PLANNING				
project: ABBEY AREA REGENERATION-PHASE 1 location: Diespeker Wharf, 38 Graham Street, London N1 8JX t: 020 7336 7777 w: www.ptea.co.uk f: 020 7336 0770 e: forename.surname@ptea.co.uk				
job no: 12_510 drawn: LG audited: DPD scale: 1:200@A1 date: JUL 13		PTEa POLLARD THOMAS EDWARDS architects		
sheet title: GENERAL ARRANGEMENT LANDMARK BUILDING TRUE ELEVATION-SOUTH & WEST sheet no: 510_1_PL_304			rev: /	



2 NORTH SITE ELEVATION
1:500



GENERAL NOTES

- This drawing is copyright of PTE architects
- Use figured dimensions only. DO NOT SCALE.
- All dimensions are in millimetres unless noted otherwise
- All levels are in metres above ordnance datum unless noted otherwise
- This drawing must be read in conjunction with all other relevant drawings and specifications from the Architect and other consultants

NOTES

- All setting out to be confirmed on site prior to construction - any discrepancy must be immediately reported to the Architect.

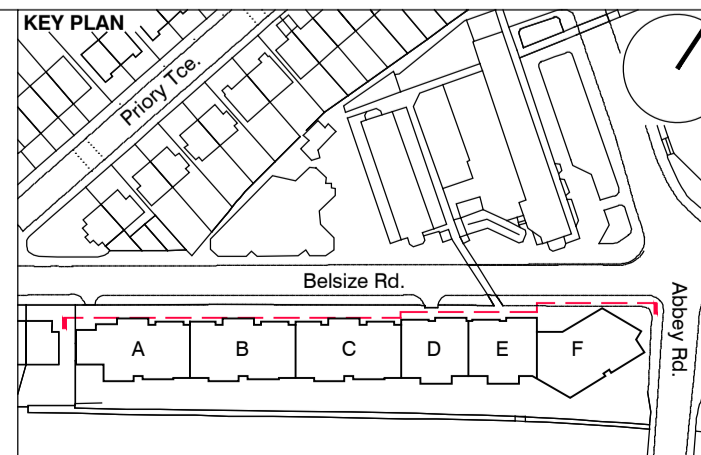
MATERIAL KEY

- A** - Brick work type 1: TYPE TO BE AGREED, stretcher bond brickwork with Cemex London White mortar or similar. Openings to have a deep brick reveal (approx 225mm unless stated otherwise).
- B** - Brick work type 2: TYPE TO BE AGREED but darker than Type 1, stretcher bond brickwork with Cemex London White mortar or similar. Allow for darker mortar to recessed brick walls. Openings to have a deep brick reveal (approx 225mm unless stated otherwise).
- C** - Glazed brickwork: TYPE TO BE AGREED, stack bonded, to Block F recessed balconies. Soffits to be brick slips (same brick specification as recessed walls), also stack bonded.
- D** - Metal panel: bronze effect panels with hidden fixings and minimal joints.
- E** - Shop front frameless glass curtain walling with 75mm aluminum capping at base, bronze effect aluminum framed double or triple glazed doors to match.
- F** - Windows / doors: bronze effect aluminum framed double or triple glazed units (manufacturer to be agreed).
- G** - Canopies: Pre-formed metal boxed canopy in bronze metallic finish with hidden structure and integral lighting.
- H** - Perforated metal balustrade or privacy screen: perforated metal (bronze metallic finish) supported off PPC coated frame with hidden fixings and minimal joints - allow for non-uniform setting out of perforations - details to be agreed.

- I** - Metal Railing Balustrade: formed from PPC vertical flats (approx 65 x 8mm)
- J** - Metal Railing Balustrade: formed from PPC vertical flats (approx 65 x 8mm) extending to balcony soffit with metal plate fascia fixed to balcony edge
- K** - Precast concrete or stone coping to parapet wall - allow for reinforcement back to structure.
- L** - Glass balustrade: frameless glass with no visible fixings.

- M** - Residential Entrances: Glazed brickwork - mixed colours TYPES TO BE AGREED, stack bonded. Through-the-wall mailbox system (DAD or similar) with one-piece front plate with integrated door entry system - Colour to be agreed.
- N** - Hit and miss brickwork wall to basement cycle store - free area to meet ventilation requirements to basement
- O** - 1.2 m high Fagus sylvatica (beech) instant hedge planted in a double staggered row

- P** - Reconstituted Stone on fixing ancon bracket to form architrave detail to concierge/supermarket/retail entrances
- Q** - Aluminium PPC loured doors/panels to refuse store/car park ramp/fire exits



rev	date	description	drawing status	dm	aut
B	04.10.13	Issue for information		BM	DPD
A	02.09.13	Drawing amended and issued to design team for comment.		RL	DPD

PLANNING					
project ABBEY AREA REGENERATION-PHASE 1 LONDON					
job no. 12_510					
drawn LG					
audited DPD					
scale 1:200@A1					
date JUL 13					
dep title GENERAL ARRANGEMENT NORTH & NORTH SITE ELEVATION through voids					
fig. no. 510_1_PL_305					
rev B					

PTEa
POLLARD THOMAS EDWARDS architects

Dispeker Wharf
33 Graham Street
London N1 8JX

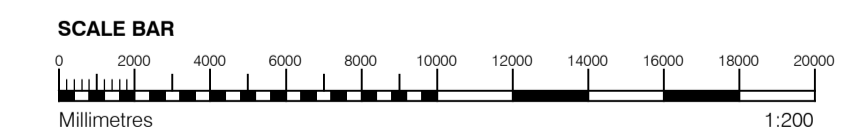
t: 020 7336 7777 w: www.ptea.co.uk
f: 020 7336 0770 e: foreshane.surname@ptea.co.uk



1 SOUTH ELEVATION
1:200



2 SOUTH SITE ELEVATION
1:500



GENERAL NOTES

- This drawing is copyright of PTE architects
- Use figured dimensions only. DO NOT SCALE.
- All dimensions are in millimetres unless noted otherwise
- All levels are in metres above ordnance datum unless noted otherwise
- This drawing must be read in conjunction with all other relevant drawings and specifications from the Architect and other consultants

NOTES

- All setting out to be confirmed on site prior to construction - any discrepancy must be immediately reported to the Architect.

MATERIAL KEY

A - Brick work type 1: TYPE TO BE AGREED, stretcher bond brickwork with Cemex London White mortar or similar. Openings to have a deep brick reveal (approx 225mm unless stated otherwise).

B - Brick work type 2: TYPE TO BE AGREED but darker than Type 1, stretcher bond brickwork with Cemex London White mortar or similar. Allow for darker mortar to recessed brick walls. Openings to have a deep brick reveal (approx 225mm unless stated otherwise).

C - Glazed brickwork: TYPE TO BE AGREED, stack bonded, to Block F recessed balconies. Soffits to be brick slips (same brick specification as recessed walls), also stack bonded.

D - Metal panel: bronze effect panels with hidden fixings and minimal joints.

E - Shop front frameless glass curtain walling with 75mm aluminum capping at base, bronze effect aluminum framed double or triple glazed doors to match.

F - Windows / doors: bronze effect aluminum framed double or triple glazed units (manufacturer to be agreed).

G - Canopies: Pre-formed metal boxed canopy in bronze metallic finish with hidden structure and integral lighting.

H - Perforated metal balustrade or privacy screen: perforated metal (bronze metallic finish) supported off PPC coated frame with hidden fixings and minimal joints - allow for non-uniform setting out of perforations - details to be agreed, details to be agreed.

I - Metal Railing Balustrade: formed from PPC vertical flats (approx 65 x 8mm)

J - Metal Railing Balustrade: formed from PPC vertical flats (approx 65 x 8mm) extending to balcony soffit with metal plate fascia fixed to balcony edge

K - Precast concrete or stone coping to parapet wall - allow for reinforcement back to structure.

L - Glass balustrade: frameless glass with no visible fixings.

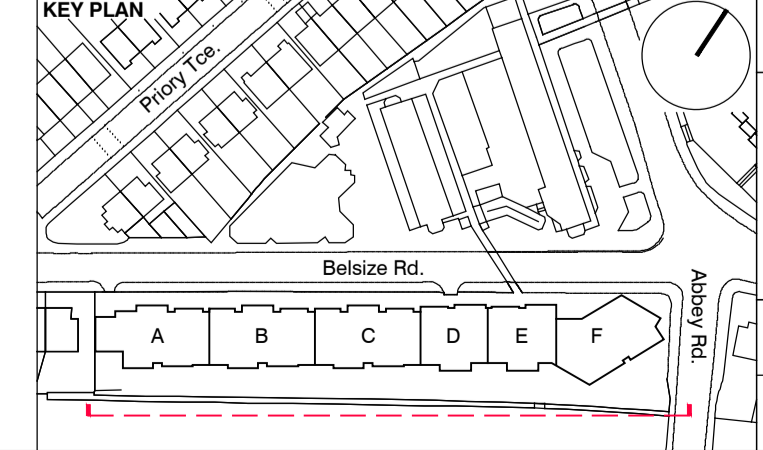
M - Residential Entrances: Glazed brickwork - mixed colours TYPES TO BE AGREED, stack bonded. Through-the-wall mailbox system (DAD or similar) with one-piece front plate with integrated door entry system - Colour to be agreed.

N - Hit and miss brickwork: wall to basement cycle store - free area to meet ventilation requirements to basement

O - 1.2 m high *Fagus sylvatica* (beech) instant hedge planted in a double staggered row

P - Reconstituted Stone on fixing ancon bracket to form architrave detail to concierge/supermarket/retail entrances

Q - Aluminium PPC louvred doors/panels to refuse store/car park ramp/fire exits



rev	date	description	dm	aud
PLANNING				
<p>Dispeker Wharf 38 Graham Street London N1 8JX</p> <p>t: 020 7336 7777 w: www.ptea.co.uk f: 020 7336 0770 e: forename.surname@ptea.co.uk</p> <p>PROJECT: ABBEY AREA REGENERATION-PHASE 1 JOB NO: 12_510 LG aud: DPD scale: 1:200@A1 date: JUL 13</p> <p>DWG FILE: GENERAL ARRANGEMENT SOUTH & SOUTH SITE ELEVATIONS inc boundary DWG NO: 510_1_PL_306 rev: /</p>				

PTEa
POLLARD THOMAS EDWARDS architects