

B

04.10.13

Concierge amendments, FE & levels

BM

DPD

A

30.08.13

Drawing amended and issued to design team for comment.

RL

DPD

rev

date

description

dm

aut

drawing status

PLANNING

Despcker Wharf
38 Graham Street
London N1 8JX

t: 020 7336 7777
f: 020 7336 0770

w: www.ptea.co.uk
e: forename.surname@ptea.co.uk

project

ABBEY AREA REGENERATION - PHASE 1
LONDON

job no.

12_510

drawn

BM

audited

DPD

scale

1:500 @ A1

date

JUL 13

sheet no.

510_1_PL_001

rev

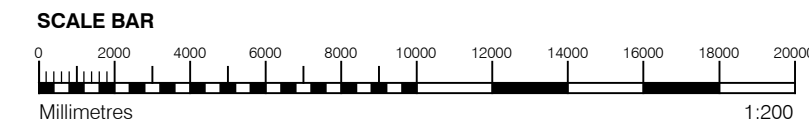
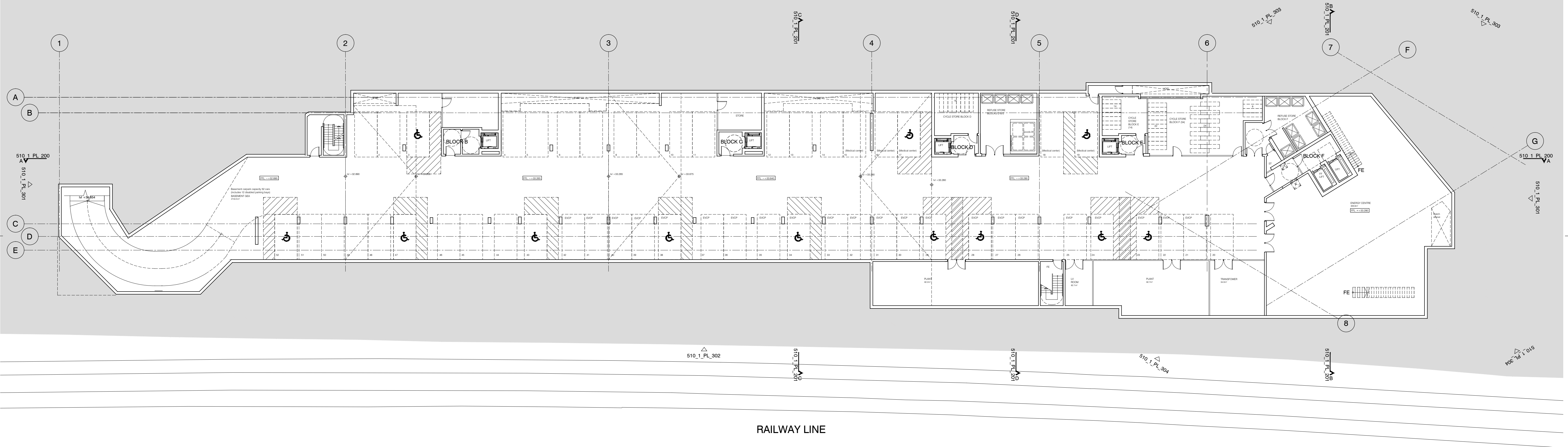
B

PTea

POLLARD THOMAS EDWARDS architects

N

I



GENERAL NOTES

- This drawing is copyright of PTE architects
- Use figured dimensions only. DO NOT SCALE.
- All dimensions are in millimetres unless noted otherwise
- All levels are in metres above ordnance datum unless noted otherwise
- This drawing must be read in conjunction with all other relevant drawings and specifications from the Architect and other consultants

NOTES

- All setting out to be confirmed on site prior to construction - any discrepancy must be immediately reported to the Architect.

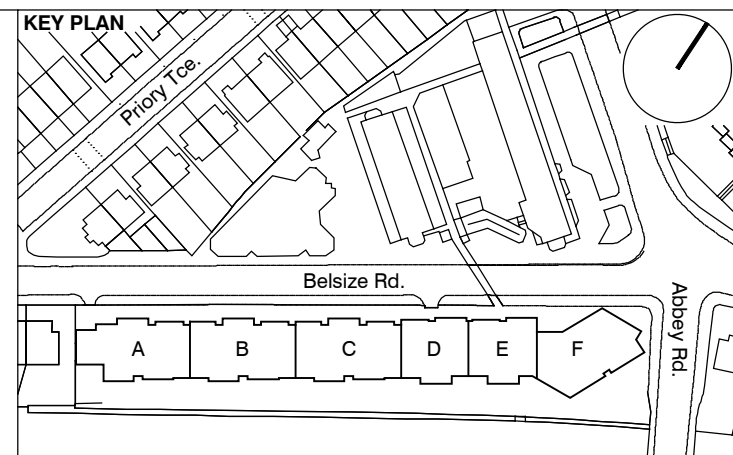
MATERIAL KEY

- A** - Brick work type 1: TYPE TO BE AGREED, stretcher bond brickwork with Cemex London White mortar or similar. Openings to have a deep brick reveal (approx 225mm unless stated otherwise).
- B** - Brick work type 2: TYPE TO BE AGREED but darker than Type 1, stretcher bond brickwork with Cemex London White mortar or similar. Allow for darker mortar to recessed brick walls. Openings to have a deep brick reveal (approx 225mm unless stated otherwise).
- C** - Glazed brickwork: TYPE TO BE AGREED, stack bonded, to Block F recessed balconies. Soffits to be brick slips (same brick specification as recessed walls), also stack bonded.
- D** - Metal panel: bronze effect panels with hidden fixings and minimal joints.
- E** - Shop front frameless glass curtain walling with 75mm aluminum capping at base, bronze effect aluminum framed double or triple glazed doors to match.
- F** - Windows / doors: bronze effect aluminum framed double or triple glazed units (manufacturer to be agreed).
- G** - Canopies: Pre-formed metal boxed canopy in bronze metallic finish with hidden structure and integral lighting.
- H** - Perforated metal balustrade or privacy screen: perforated metal (bronze metallic finish) supported off PPC coated frame with hidden fixings and minimal joints - allow for non-uniform setting out of perforations - details to be agreed.

- I** - Metal Railing Balustrade: formed from PPC vertical flats (approx 65 x 8mm)
- J** - Metal Railing Balustrade: formed from PPC vertical flats (approx 65 x 8mm) extending to balcony soffit with metal plate fascia fixed to balcony edge
- K** - Precast concrete or stone coping to parapet wall - allow for reinforcement back to structure.
- L** - Glass balustrade: frameless glass with no visible fixings.

- M** - Residential Entrances: Glazed brickwork - mixed colours TYPES TO BE AGREED, stack bonded. Through-the-wall mailbox system (DAD or similar) with one-piece front plate with integrated door entry system - Colour to be agreed.
- N** - Hit and miss brickwork wall to basement cycle store - free area to meet ventilation requirements to basement
- O** - 1.2 m high Fagus sylvatica (beech) instant hedge planted in a double staggered row

- P** - Reconstituted Stone on fixing ancon bracket to form architrave detail to concierge/supermarket/retail entrances
- Q** - Aluminium PPC loured doors/panels to refuse store/car park ramp/fire exits



B 04 10 13 Block F layout updates / parking & cycling spaces
A 30 08 13 Drawing amended and issued to design team for comment.

rev. date description

dm aud

PLANNING

Dispeker Wharf
38 Graham Street
London N1 8JX

t: 020 7336 7777 w: www.ptea.co.uk
f: 020 7336 0770 e: forename.surname@ptea.co.uk

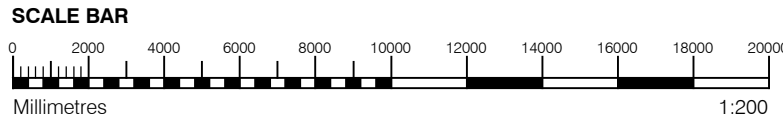
project ABBEY AREA REGENERATION - PHASE1
step title GENERAL ARRANGEMENT BASEMENT FLOOR PLAN

job no. 12_510
drawn BM
audited DPD
scale 1:200 @ A1
date JUL 13

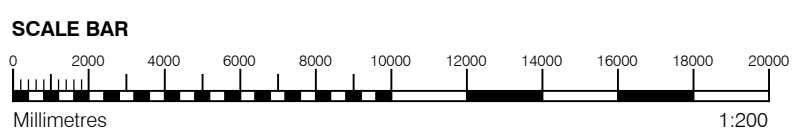
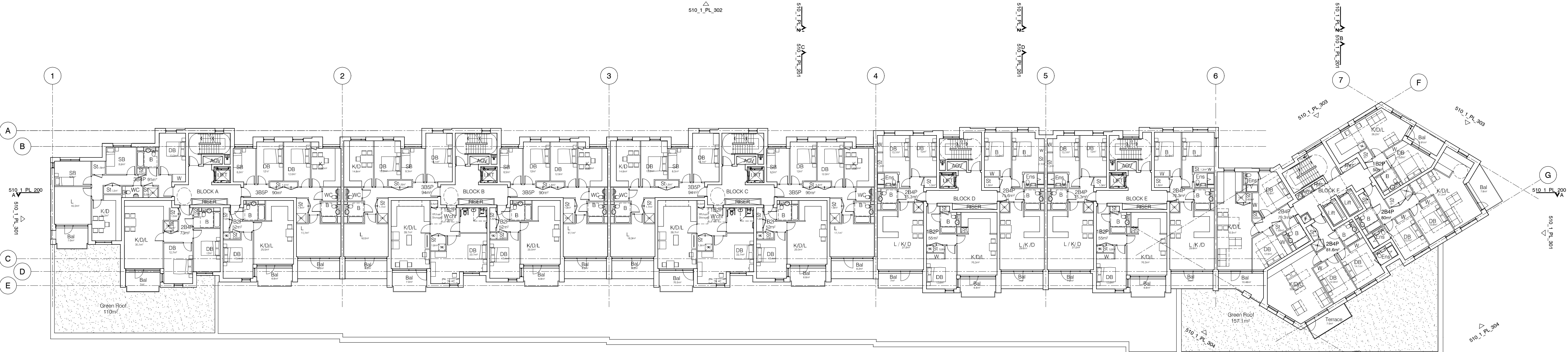
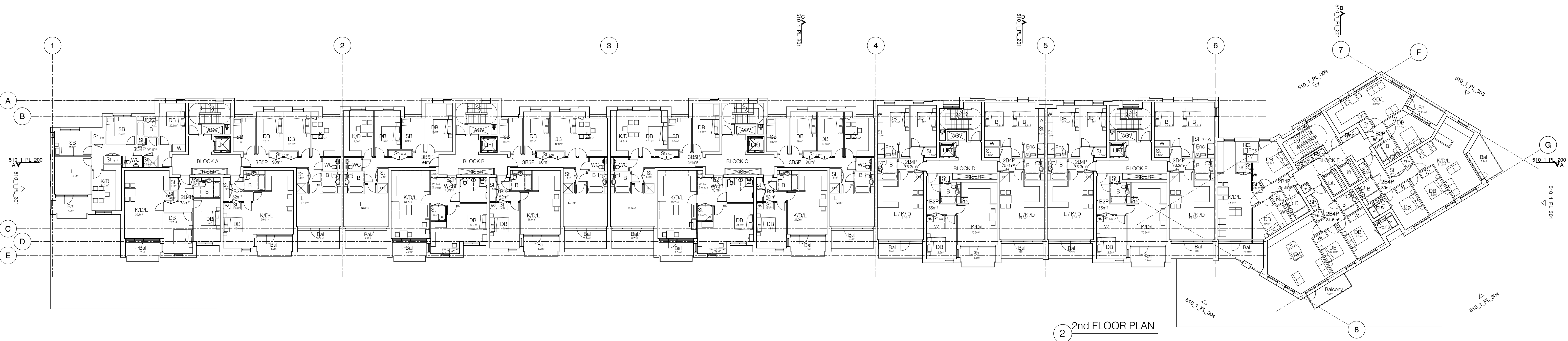
510_1_PL_099

rev. B

PTEa
POLLARD THOMAS EDWARDS architects



dwg title	510 1 PL 100	rev	B
GENERAL ARRANGEMENT GROUND FLOOR PLAN			



GENERAL NOTES

- This drawing is copyright of PTE architects
- Use figured dimensions only. DO NOT SCALE.
- All dimensions are in millimetres unless noted otherwise
- All levels are in metres above ordnance datum unless noted otherwise
- This drawing must be read in conjunction with all other relevant drawings and specifications from the Architect and other consultants

NOTES

- All setting out to be confirmed on site prior to construction - any discrepancy must be immediately reported to the Architect.

MATERIAL KEY

A - Brick work type 1: TYPE TO BE AGREED, stretcher bond brickwork with Cemex London White mortar or similar. Openings to have a deep brick reveal (approx 225mm unless stated otherwise).

B - Brick work type 2: TYPE TO BE AGREED but darker than Type 1, stretcher bond brickwork with Cemex London White mortar or similar. Allow for darker mortar to recessed brick walls. Openings to have a deep brick reveal (approx 225mm unless stated otherwise).

C - Glazed brickwork: TYPE TO BE AGREED, stack bonded, to Block F recessed balconies. Soffits to be brick slips (same brick specification as recessed walls), also stack bonded.

D - Metal panel: bronze effect panels with hidden fixings and minimal joints.

E - Shop front frameless glass curtain walling with 75mm aluminum capping at base, bronze effect aluminum framed double or triple glazed doors to match.

F - Windows / doors: bronze effect aluminum framed double or triple glazed units (manufacturer to be agreed).

G - Canopies: Pre-formed metal boxed canopy in bronze metallic finish with hidden structure and integral lighting.

H - Perforated metal balustrade or privacy screen: perforated metal (bronze metallic finish) supported off PPC coated frame with hidden fixings and minimal joints - allow for non-uniform setting out of perforations - details to be agreed.

I - Metal Railing Balustrade: formed from PPC vertical flats (approx 65 x 8mm)

J - Metal Railing Balustrade: formed from PPC vertical flats (approx 65 x 8mm) extending to balcony edge with metal plate fascia fixed to balcony edge

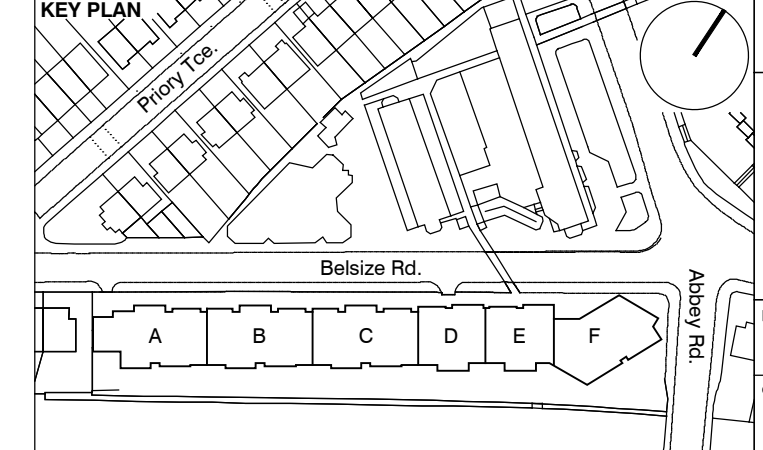
K - Precast concrete or stone coping to parapet wall - allow for reinforcement back to structure.

L - Glass balustrade: frameless glass with no visible fixings.

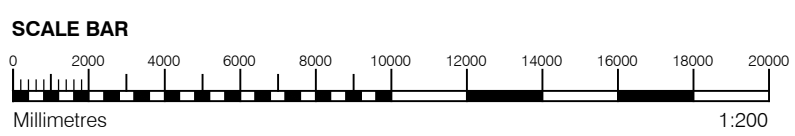
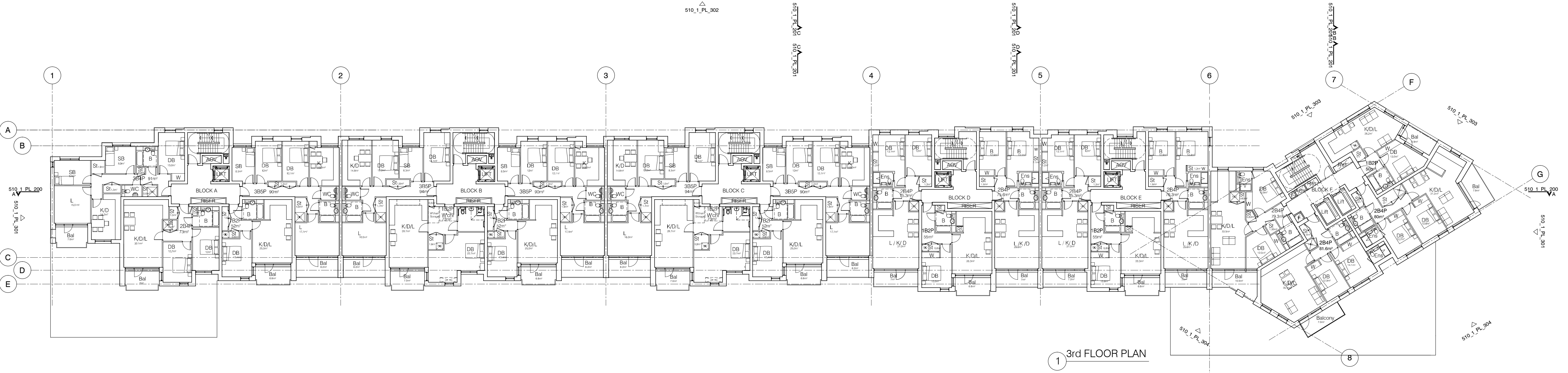
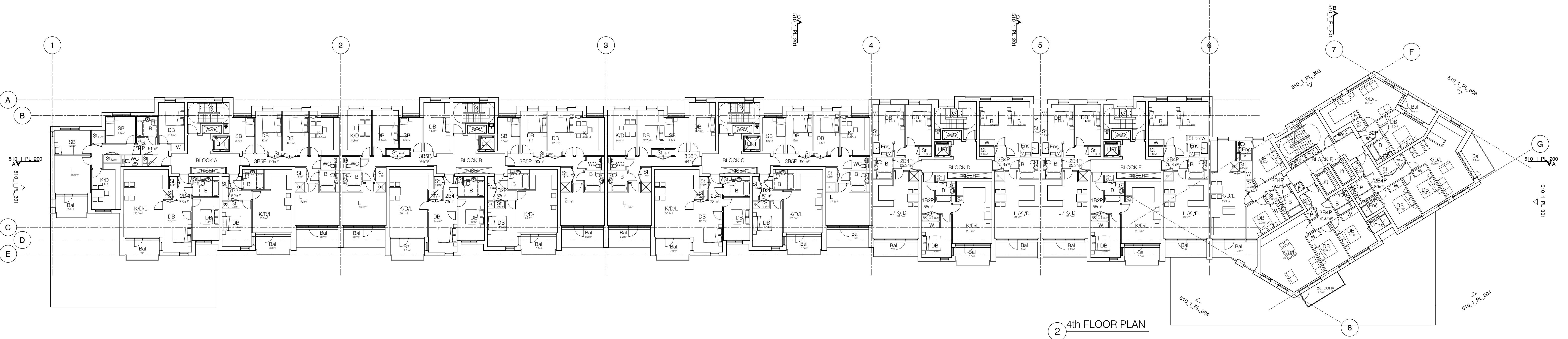
M - Residential Entrances: Glazed brickwork - mixed colours TYPES TO BE AGREED, stack bonded. Through-the-wall mailbox system (DAD or similar) with one-piece front plate with integrated door entry system - Colour to be agreed.

N - Hit and miss brickwork wall to basement cycle store - free area to meet ventilation requirements to basement

O - 1.2 m high Fagus sylvatica (beech) instant hedge planted in a double staggered row



A		04.10.13		Balcony area in Block A revised		RM		DPD	
B		30.08.13		Drawing amended and issued to design team for comment.		RL		DPD	
rev.		date		description				dm aut	
drawing status									
PLANNING									
<div><div><div>Despcker Wharf 38 Graham Street London N1 8JX</div><div>t: 020 7336 7777 f: 020 7336 0770</div><div>w: www.ptea.co.uk e: forename.surname@ptea.co.uk</div></div><div><div>PTEA</div><div>POLLARD THOMAS EDWARDS architects</div></div></div>									
project ABBEY AREA REGENERATION - PHASE 1 LONDON				job no. 12_510		drawn BM audited DPD		scale 1:200 @ A1 date JUL 13	
dwg title GENERAL ARRANGEMENT 1st & 2nd FLOOR PLANS				dwg. no. 510_1_PL_101				rev B	



GENERAL NOTES

- This drawing is copyright of PTE architects
- Use figured dimensions only. DO NOT SCALE.
- All dimensions are in millimetres unless noted otherwise
- All levels are in metres above ordnance datum unless noted otherwise
- This drawing must be read in conjunction with all other relevant drawings and specifications from the Architect and other consultants

NOTES

- All setting out to be confirmed on site prior to construction - any discrepancy must be immediately reported to the Architect.

MATERIAL KEY

A - Brick work type 1: TYPE TO BE AGREED, stretcher bond brickwork with Cemex London White mortar or similar. Openings to have a deep brick reveal (approx 225mm unless stated otherwise).

B - Brick work type 2: TYPE TO BE AGREED but darker than Type 1, stretcher bond brickwork with Cemex London White mortar or similar. Allow for darker mortar to recessed brick walls. Openings to have a deep brick reveal (approx 225mm unless stated otherwise).

C - Glazed brickwork: TYPE TO BE AGREED, stack bonded, to Block F recessed balconies. Soffits to be brick slips (same brick specification as recessed walls), also stack bonded.

D - Metal panel: bronze effect panels with hidden fixings and minimal joints.

E - Shop front frameless glass curtain walling with 75mm aluminum capping at base, bronze effect aluminum framed double or triple glazed doors to match.

F - Windows / doors: bronze effect aluminum framed double or triple glazed units (manufacturer to be agreed).

G - Canopies: Pre-formed metal boxed canopy in bronze metallic finish with hidden structure and integral lighting.

H - Perforated metal balustrade or privacy screen: perforated metal (bronze metallic finish) supported off PPC coated frame with hidden fixings and minimal joints - allow for non-uniform setting out of perforations - details to be agreed.

I - Metal Railing Balustrade: formed from PPC vertical flats (approx 65 x 8mm)

J - Metal Railing Balustrade: formed from PPC vertical flats (approx 65 x 8mm) extending to balcony edge with metal plate fascia fixed to balcony edge

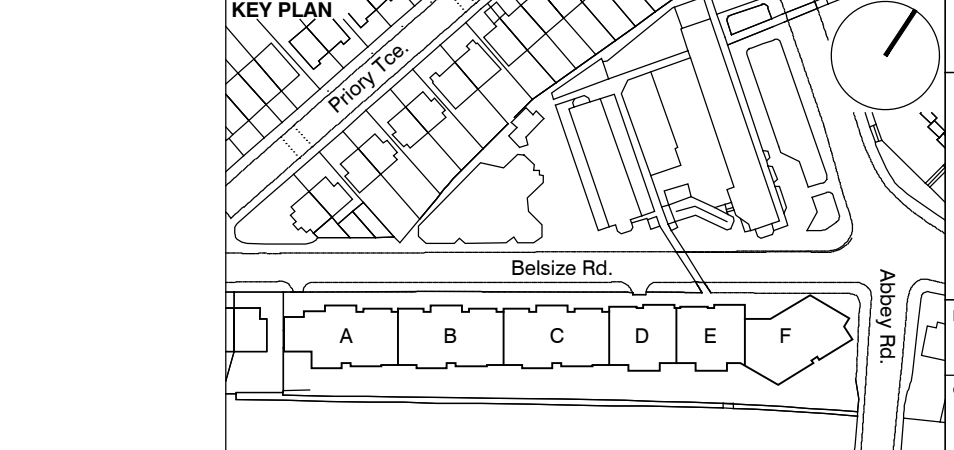
K - Precast concrete or stone coping to parapet wall - allow for reinforcement back to structure.

L - Glass balustrade: frameless glass with no visible fixings.

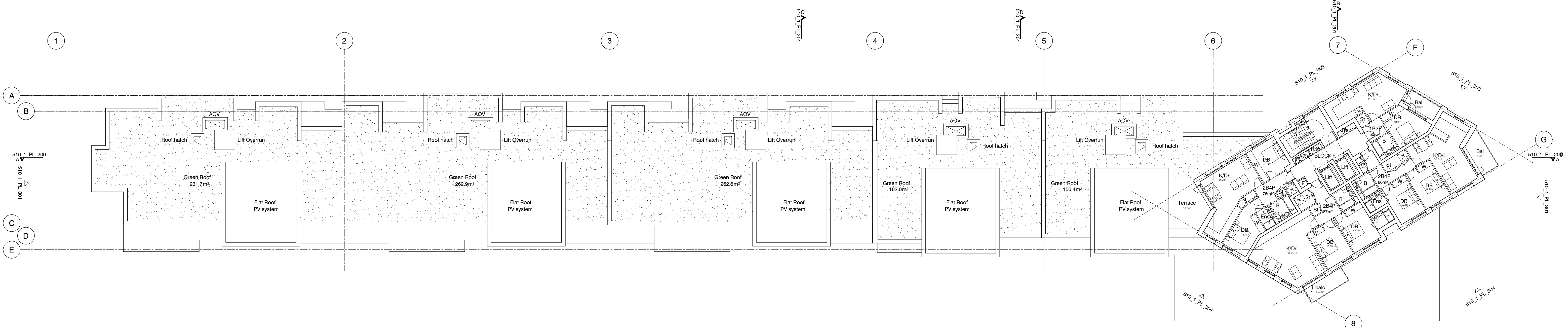
M - Residential Entrances: Glazed brickwork - mixed colours TYPES TO BE AGREED, stack bonded. Through-the-wall mailbox system (DAD or similar) with one-piece front plate with integrated door entry system - Colour to be agreed.

N - Hit and miss brickwork wall to basement cycle store - free area to meet ventilation requirements to basement

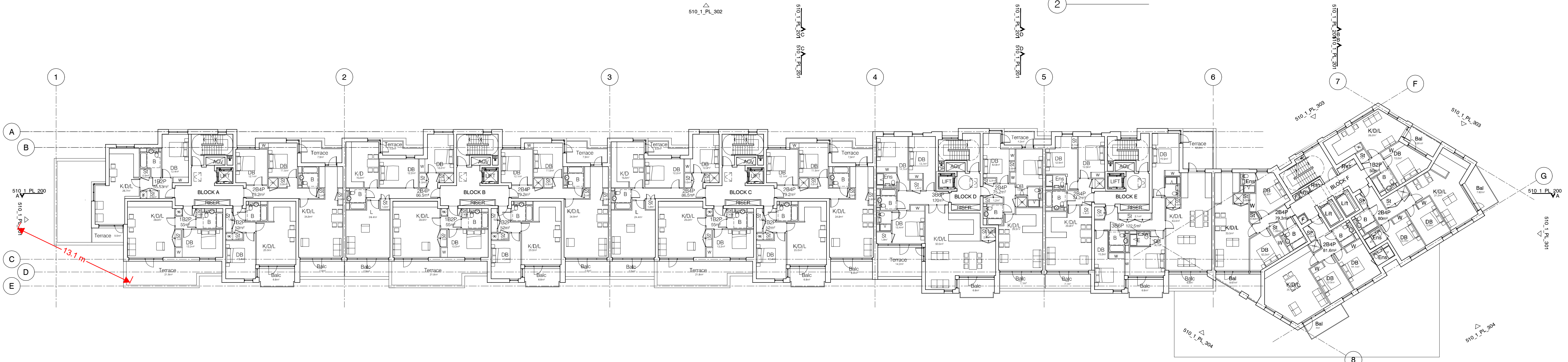
O - 1.2 m high Fagus sylvatica (beech) instant hedge planted in a double staggered row



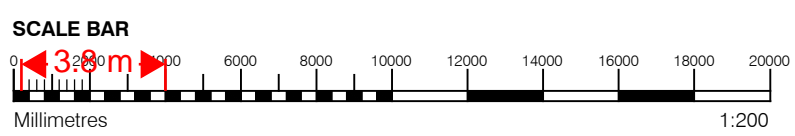
B	04.10.13	Balcony area in Block A revised.	BM	DPD
	30.08.13	Drawing amended and issued to design team for comment.		
A			RL	DPD
rev.	date	description	dm	aut
PLANNING				
<p>Despcker Wharf 38 Graham Street London N1 8JX</p> <p>t: 020 7336 7777 w: www.ptea.co.uk f: 020 7336 0770 e: forename.surname@ptea.co.uk</p>				
project	ABEY AREA REGENERATION - PHASE 1	job.no.	12_510	drawn
drawn	BM	audited	DPD	scale
scale	1:200 @ A1	date	JUL 13	
step file	GENERAL ARRANGEMENT 3rd & 4th FLOOR PLANS	rev.	B	
510_1_PL_102				



2 6th FLOOR PLAN



1 5th FLOOR PLAN



GENERAL NOTES

- This drawing is copyright of PTE architects
- Use figured dimensions only. DO NOT SCALE.
- All dimensions are in millimetres unless noted otherwise
- All levels are in metres above ordnance datum unless noted otherwise
- This drawing must be read in conjunction with all other relevant drawings and specifications from the Architect and other consultants

NOTES

- All setting out to be confirmed on site prior to construction - any discrepancy must be immediately reported to the Architect.

MATERIAL KEY

A - Brick work type 1: TYPE TO BE AGREED, stretcher bond brickwork with Cemex London White mortar or similar. Openings to have a deep brick reveal (approx 225mm unless stated otherwise).

B - Brick work type 2: TYPE TO BE AGREED but darker than Type 1, stretcher bond brickwork with Cemex London White mortar or similar. Allow for darker mortar to recessed brick walls. Openings to have a deep brick reveal (approx 225mm unless stated otherwise).

C - Glazed brickwork: TYPE TO BE AGREED, stack bonded, to Block F recessed balconies. Soffits to be brick slips (same brick specification as recessed walls), also stack bonded.

D - Metal panel: bronze effect panels with hidden fixings and minimal joints.

E - Shop front frameless glass curtain walling with 75mm aluminum capping at base, bronze effect aluminum framed double or triple glazed doors to match.

F - Windows / doors: bronze effect aluminum framed double or triple glazed units (manufacturer to be agreed).

G - Canopies: Pre-formed metal boxed canopy in bronze metallic finish with hidden structure and integral lighting.

H - Perforated metal balustrade or privacy screen: perforated metal (bronze metallic finish) supported off PPC coated frame with hidden fixings and minimal joints - allow for non-uniform setting out of perforations - details to be agreed.

I - Metal Railing Balustrade: formed from PPC vertical flats (approx 65 x 8mm)

J - Metal Railing Balustrade: formed from PPC vertical flats (approx 65 x 8mm) extending to balcony soffit with metal plate fascia fixed to balcony edge

K - Precast concrete or stone coping to parapet wall - allow for reinforcement back to structure.

L - Glass balustrade: frameless glass with no visible fixings.

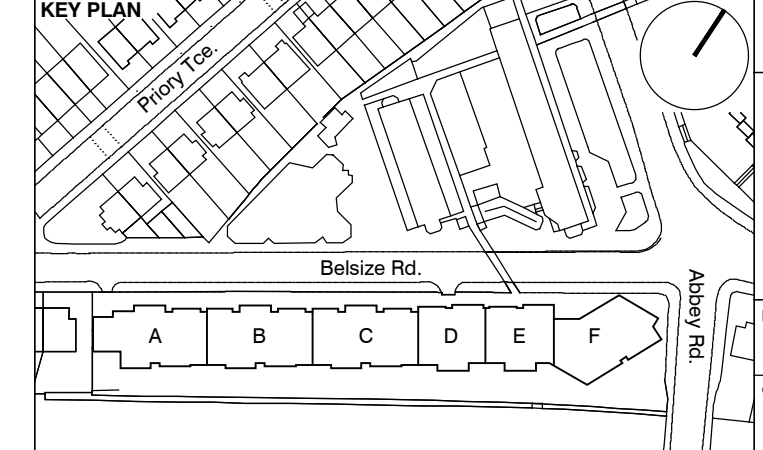
M - Residential Entrances: Glazed brickwork - mixed colours TYPES TO BE AGREED, stack bonded. Through-the-wall mailbox system (DAD or similar) with one-piece front plate with integrated door entry system - Colour to be agreed.

N - Hit and miss brickwork wall to basement cycle store - free area to meet ventilation requirements to basement

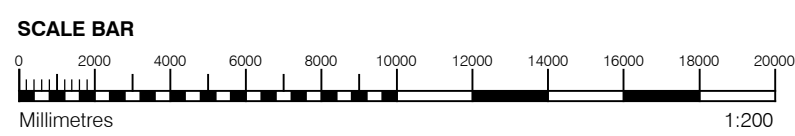
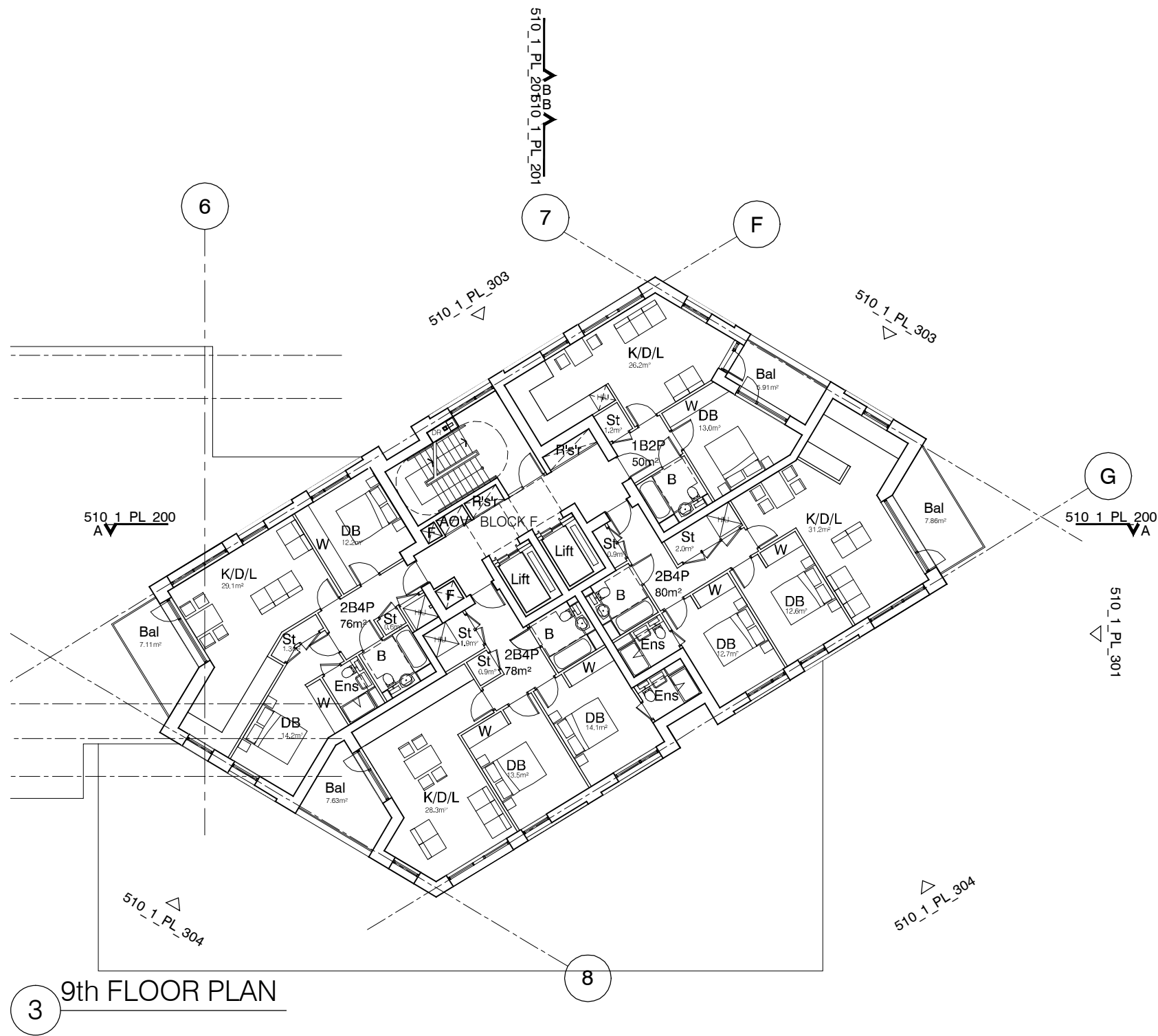
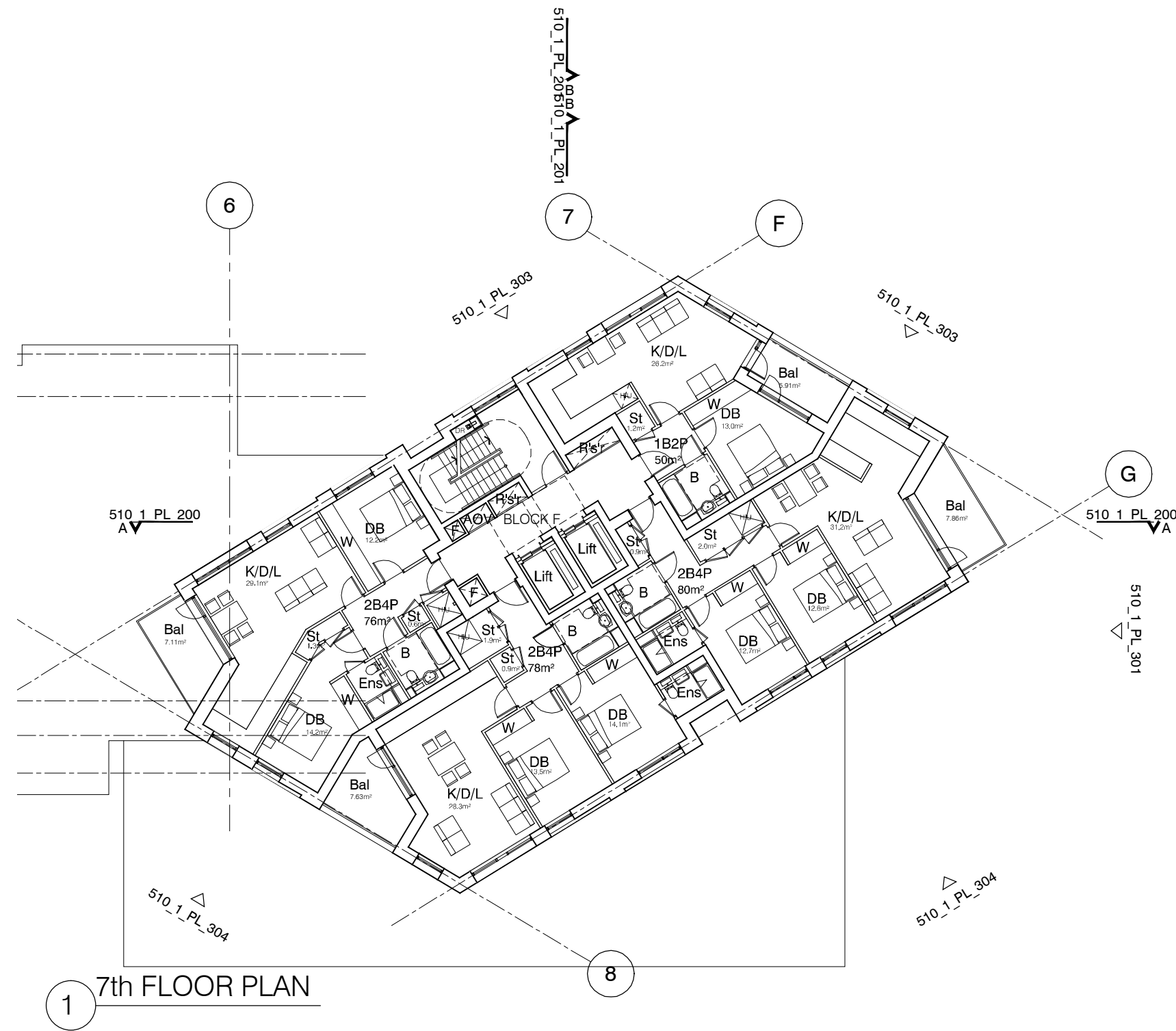
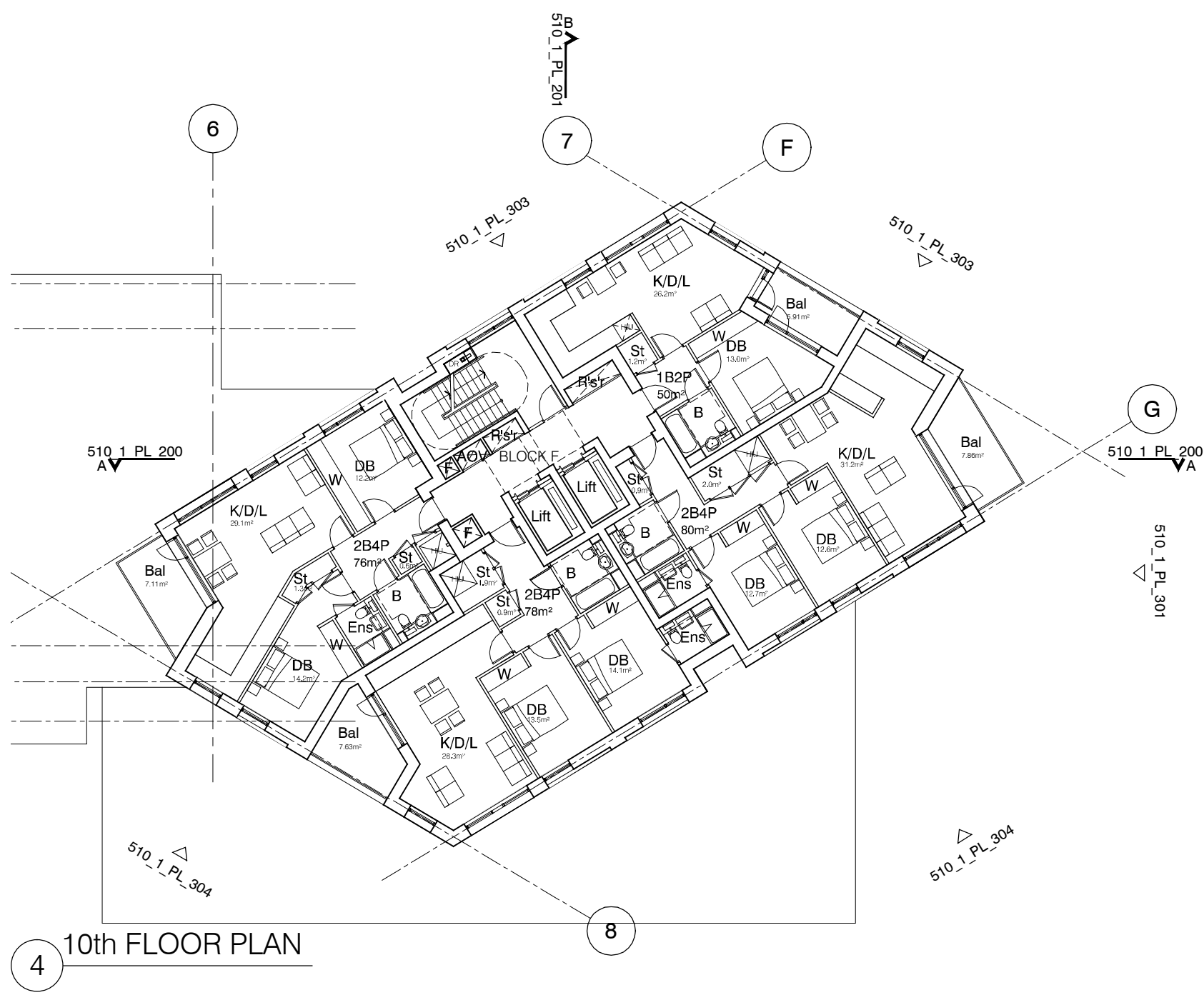
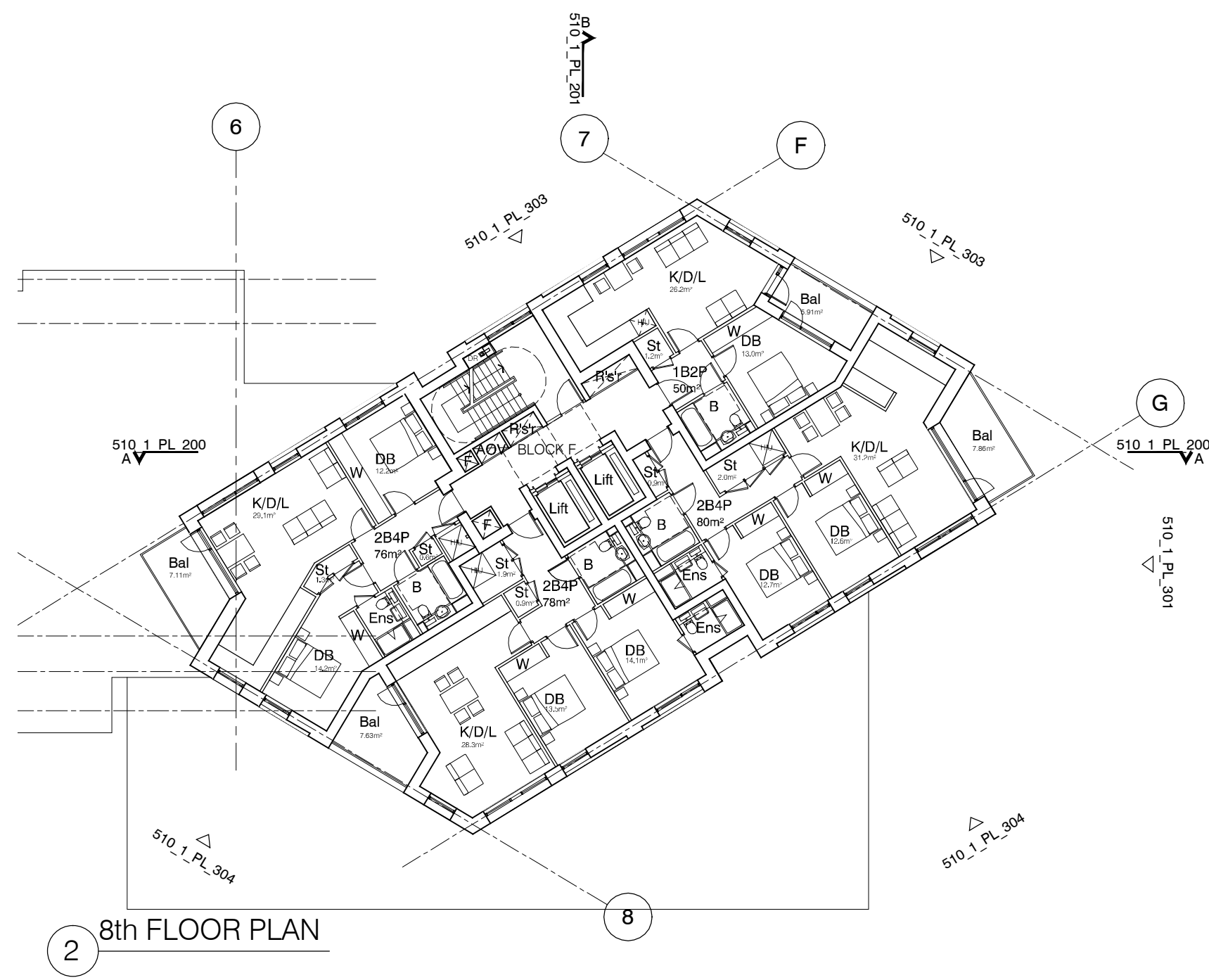
O - 1.2 m high Fagus sylvatica (beech) instant hedge planted in a double staggered row

P - Reconstituted Stone on fixing ancon bracket to form architrave detail to concierge/supermarket/retail entrances

Q - Aluminium PPC loured doors/panels to refuse store/car park ramp/fire exits



drawing status		PLANNING	
Despcker Wharf 38 Graham Street London N1 8JX		PTEa POLLARD THOMAS EDWARDS architects	
t: 020 7336 7777	w: www.ptea.co.uk	project ABBEY AREA REGENERATION - PHASE 1	
f: 020 7336 0770	e: forename.surname@ptea.co.uk	job no. 12_510	
drawn PT		scale 1:200 @ A1	
step file GENERAL ARRANGEMENT 5th & 6th FLOOR PLANS		date JUL 13	
510_1_PL_103		rev B	



GENERAL NOTES

- This drawing is copyright of PTE architects
- Use figured dimensions only. DO NOT SCALE.
- All dimensions are in millimetres unless noted otherwise.
- All levels are in metres above ordnance datum unless noted otherwise.
- This drawing must be read in conjunction with all other relevant drawings and specifications from the Architect and other consultants

NOTES

- All setting out to be confirmed on site prior to construction - any discrepancy must be immediately reported to the Architect.

MATERIAL KEY

A - Brick work type 1: TYPE TO BE AGREED, stretcher bond brickwork with Cemex London White mortar or similar. Openings to have a deep brick reveal (approx 225mm unless stated otherwise).

B - Brick work type 2: TYPE TO BE AGREED but darker than Type 1, stretcher bond brickwork with Cemex London White mortar or similar. Allow for darker mortar to recessed brick walls. Openings to have a deep brick reveal (approx 225mm unless stated otherwise).

C - Glazed brickwork: TYPE TO BE AGREED, stack bonded, to Block F recessed balconies. Soffits to be brick slips (same brick specification as recessed walls), also stack bonded.

D - Metal panel: bronze effect panels with hidden fixings and minimal joints.

E - Shop front frameless glass curtain walling with 75mm aluminum capping at base, bronze effect aluminum framed double or triple glazed doors to match.

F - Windows / doors: bronze effect aluminum framed double or triple glazed units (manufacturer to be agreed).

G - Canopies: Pre-formed metal boxed canopy in bronze metallic finish with hidden structure and integral lighting.

H - Perforated metal balustrade or privacy screen: perforated metal (bronze metallic finish) supported off PPC coated frame with hidden fixings and minimal joints - allow for non-uniform setting out of perforations - details to be agreed.

I - Metal Railing Balustrade: formed from PPC vertical flats (approx 65 x 8mm)

J - Metal Railing Balustrade: formed from PPC vertical flats (approx 65 x 8mm) extending to balcony soffit with metal plate fascia fixed to balcony edge

K - Precast concrete or stone coping to parapet wall - allow for reinforcement back to structure.

L - Glass balustrade: frameless glass with no visible fixings.

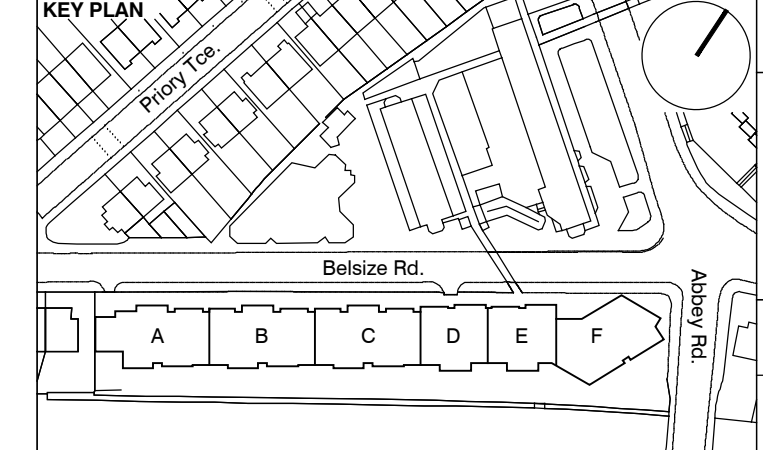
M - Residential Entrances: Glazed brickwork - mixed colours TYPES TO BE AGREED, stack bonded. Through-the-wall mailbox system (DAD or similar) with one-piece front plate with integrated door entry system - Colour to be agreed.

N - Hit and miss brickwork wall to basement cycle store - free area to meet ventilation requirements to basement

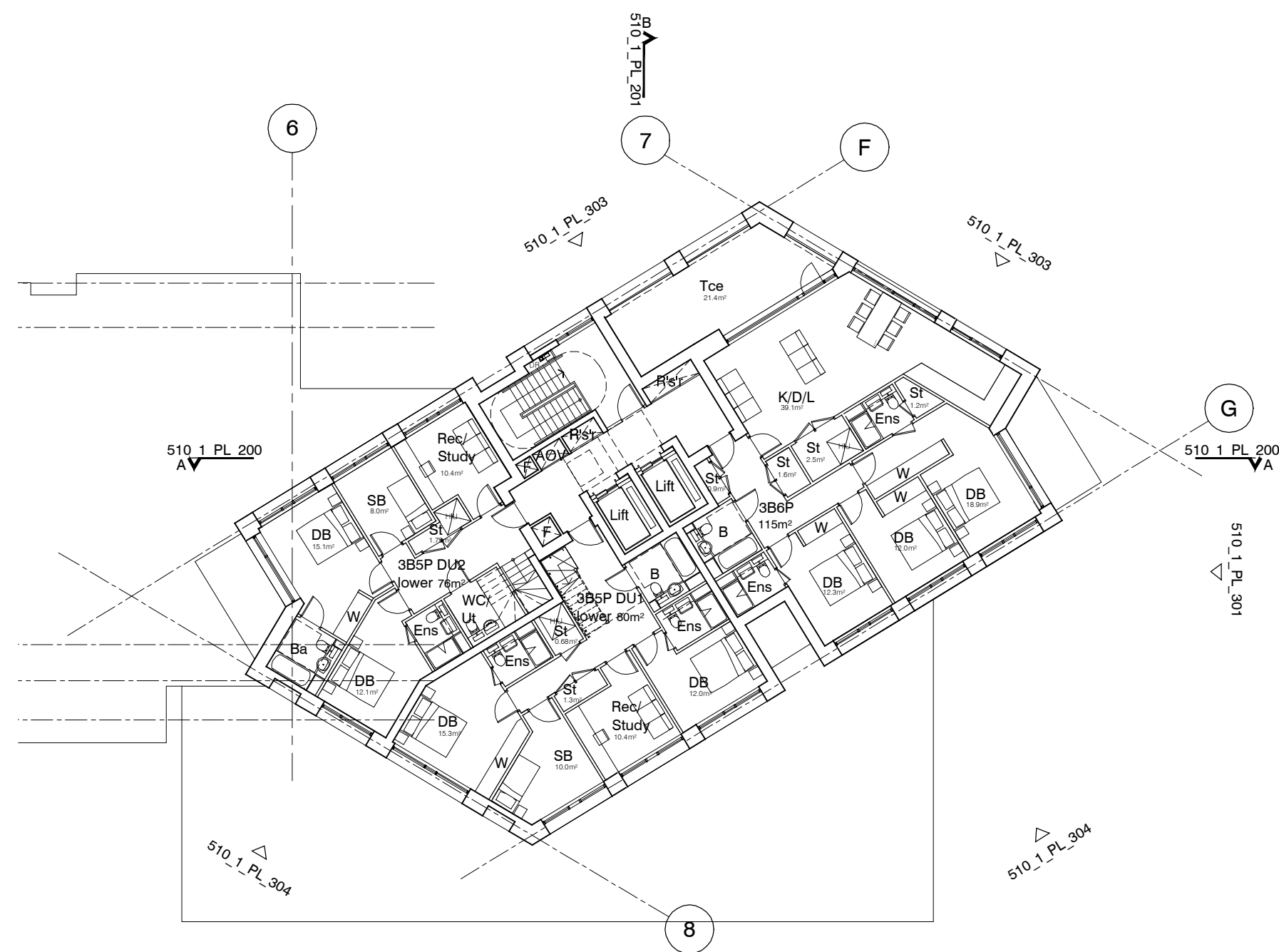
O - 1.2 m high Fagus sylvatica (beech) instant hedge planted in a double staggered row

P - Reconstituted Stone on fixing ancon bracket to form architrave detail to concierge/supermarket/retail entrances

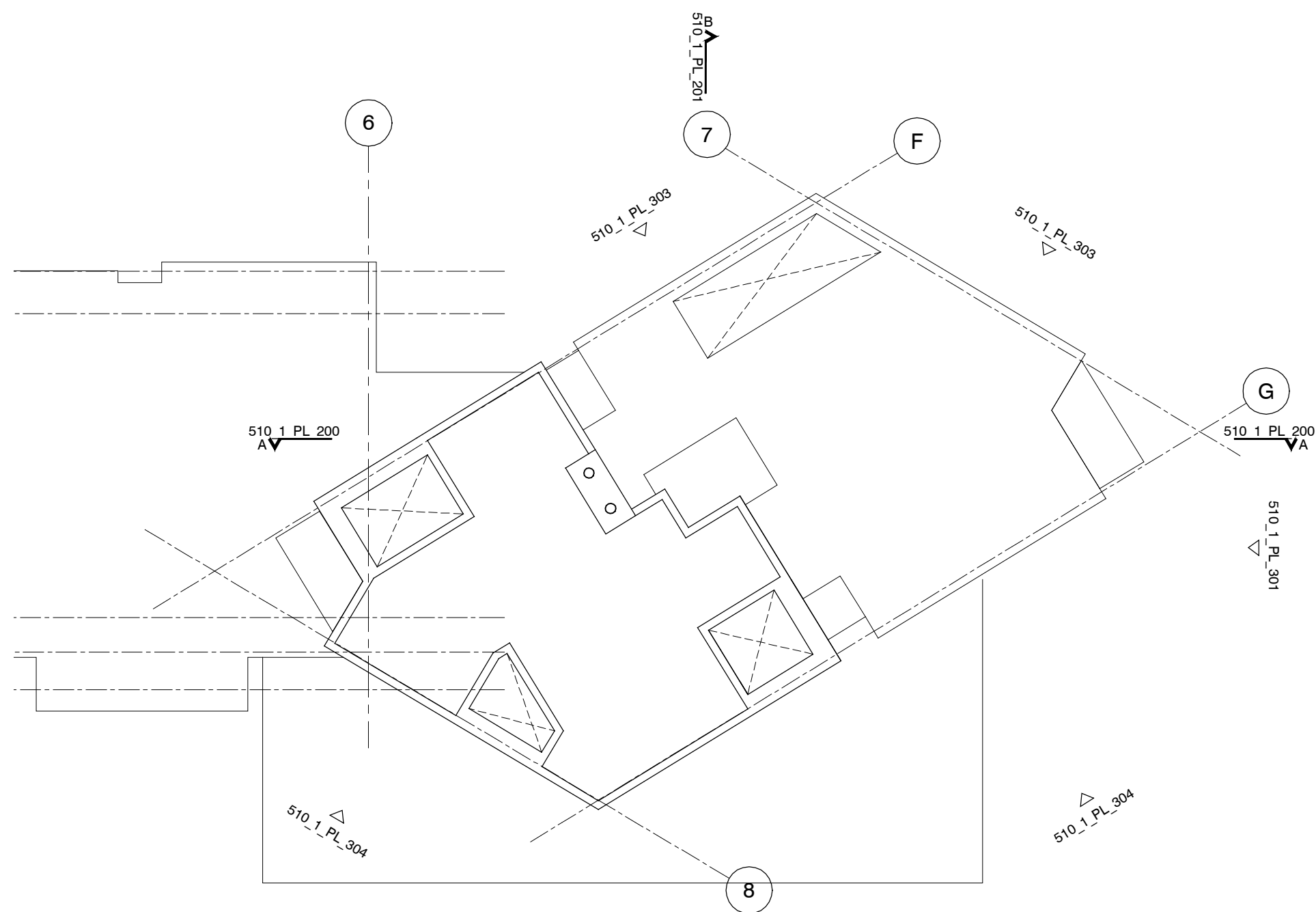
Q - Aluminium PPC louvred doors/panels to refuse store/car park ramp/fire exits



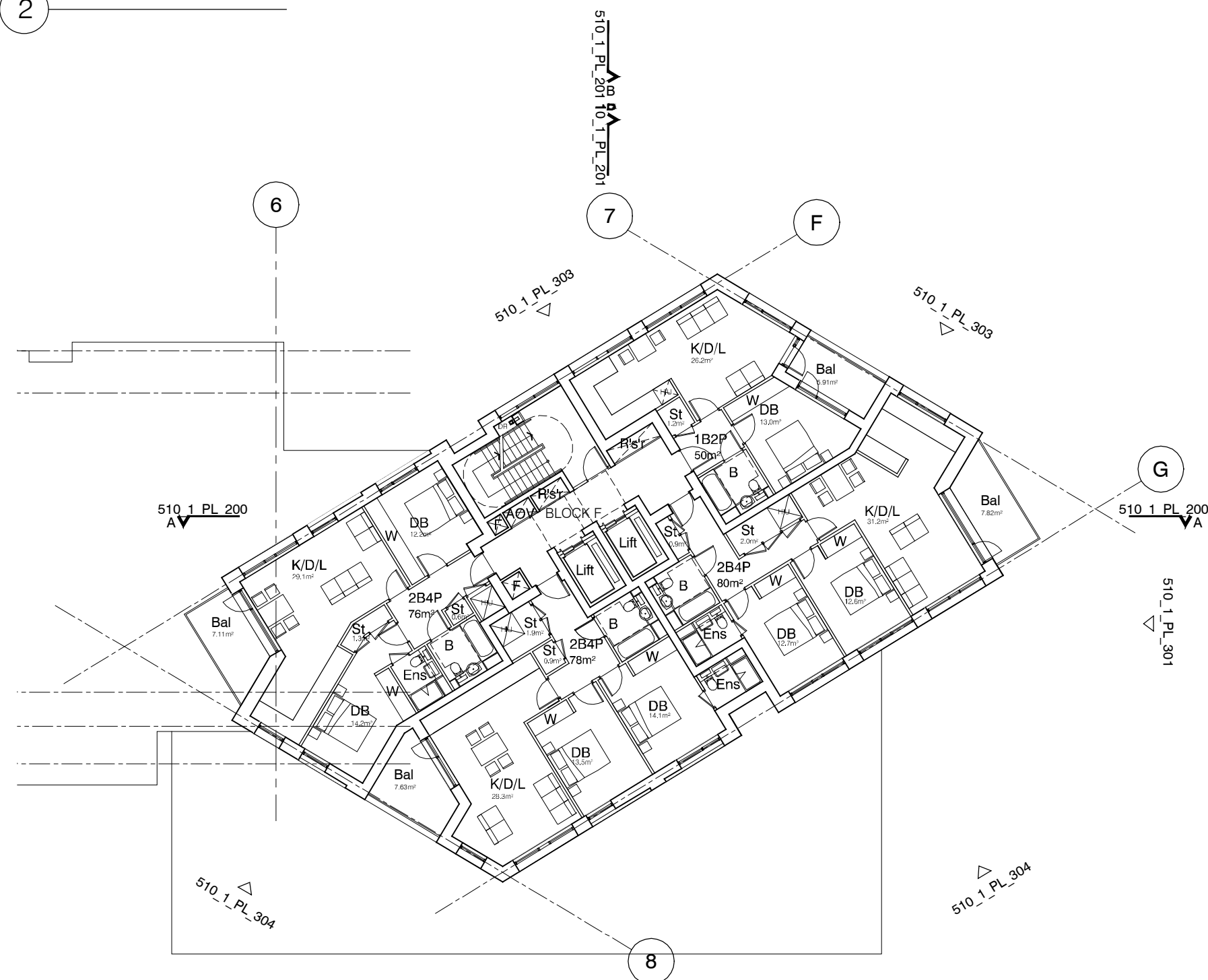
rev.	date	description		dm	aud
drawing status					
PLANNING					
Diespeker Wharf 38 Graham Street London N1 8JX					
t: 020 7336 7777		w: www.ptea.co.uk			
f: 020 7336 0770		e: forename.surname@ptea.co.uk			
<div><div><div>PTEa</div><div>POLLARD THOMAS EDWARDS architects</div></div></div>					
project	ABBAY AREA REGENERATION - PHASE 1 LONDON	job no.	12_510	drawn	PT
		audited	DPD	scale	1:200 @ A1
				date	JUL 13
dwg title	GENERAL ARRANGEMENT 7th, 8th, 9th & 10th FLOOR PLANS			drp. no.	510 = 1_PL_104
				rev	/



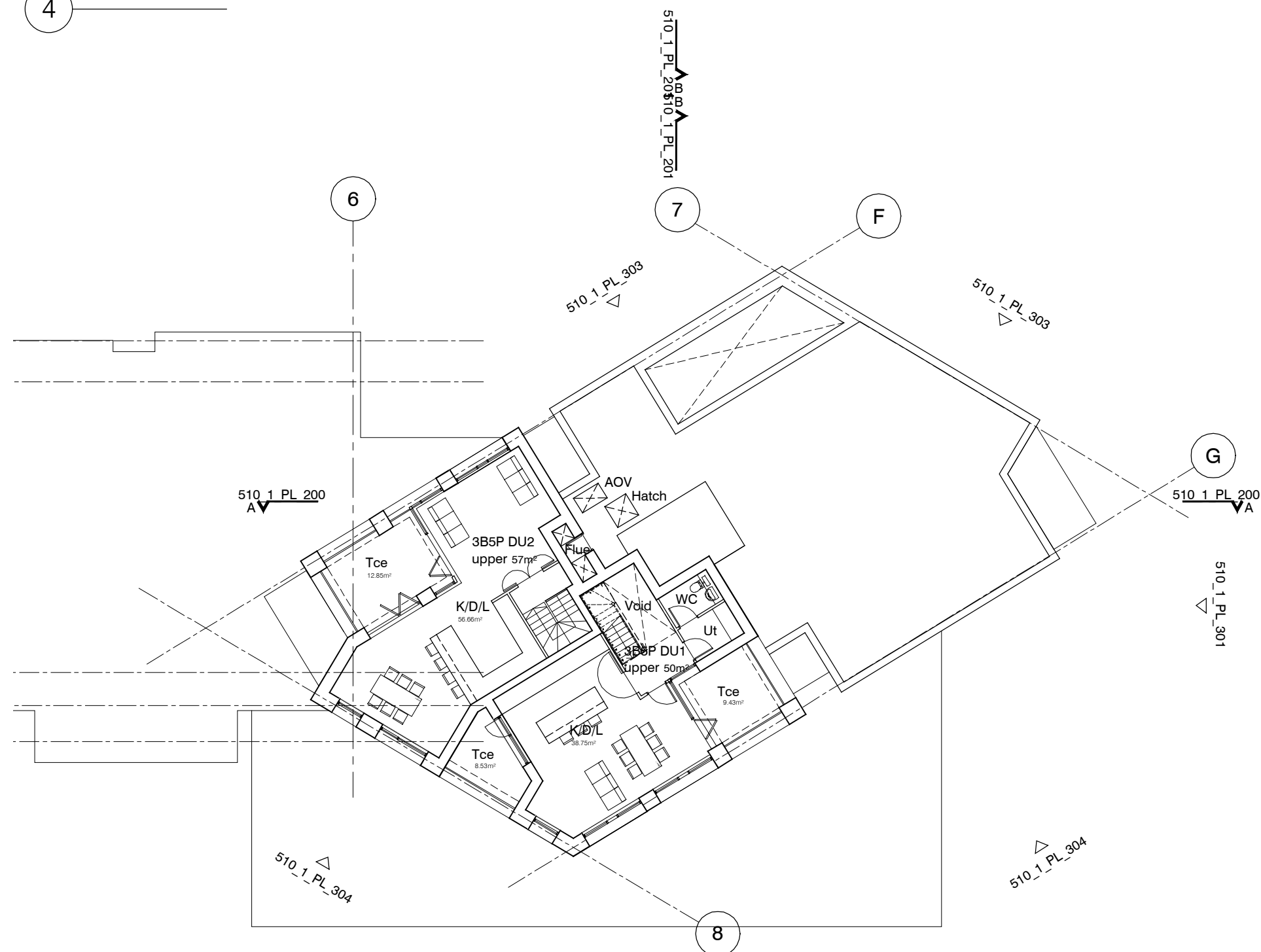
2 12th FLOOR PLAN



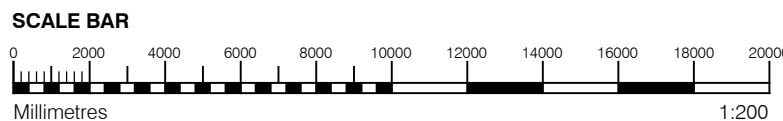
4 ROOF PLAN



1 11th FLOOR PLAN



3 13th FLOOR PLAN



GENERAL NOTES

- This drawing is copyright of PTE architects
- Use figured dimensions only. DO NOT SCALE.
- All dimensions are in millimetres unless noted otherwise
- All levels are in metres above ordnance datum unless noted otherwise
- This drawing must be read in conjunction with all other relevant drawings and specifications from the Architect and other consultants

NOTES

- All setting out to be confirmed on site prior to construction - any discrepancy must be immediately reported to the Architect.

MATERIAL KEY

- A** - Brick work type 1: TYPE TO BE AGREED, stretcher bond brickwork with Cemex London White mortar or similar. Openings to have a deep brick reveal (approx 225mm unless stated otherwise).
- B** - Brick work type 2: TYPE TO BE AGREED but darker than Type 1, stretcher bond brickwork with Cemex London White mortar or similar. Allow for darker mortar to recessed brick walls. Openings to have a deep brick reveal (approx 225mm unless stated otherwise).
- C** - Glazed brickwork: TYPE TO BE AGREED, stack bonded, to Block F recessed balconies. Soffits to be brick slips (same brick specification as recessed walls), also stack bonded.
- D** - Metal panel: bronze effect panels with hidden fixings and minimal joints.

- E** - Shop front frameless glass curtain walling with 75mm aluminum capping at base, bronze effect aluminum framed double or triple glazed doors to match.

- F** - Windows / doors: bronze effect aluminum framed double or triple glazed units (manufacturer to be agreed).

- G** - Canopies: Pre-formed metal boxed canopy in bronze metallic finish with hidden structure and integral lighting.

- H** - Perforated metal balustrade or privacy screen: perforated metal (bronze metallic finish) supported off PPC coated frame with hidden fixings and minimal joints - allow for non-uniform setting out of perforations - details to be agreed.

- I** - Metal Railing Balustrade: formed from PPC vertical flats (approx 65 x 8mm)

- J** - Metal Railing Balustrade: formed from PPC vertical flats (approx 65 x 8mm) extending to balcony soffit with metal plate fascia fixed to balcony edge

- K** - Precast concrete or stone coping to parapet wall - allow for reinforcement back to structure.

- L** - Glass balustrade: frameless glass with no visible fixings.

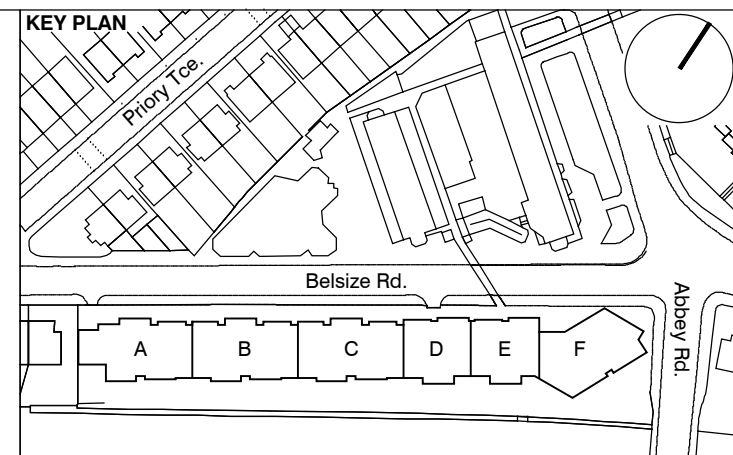
- M** - Residential Entrances: Glazed brickwork - mixed colours TYPES TO BE AGREED, stack bonded. Through-the-wall mailbox system (DAD or similar) with one-piece front plate with integrated door entry system - Colour to be agreed.

- N** - Hit and miss brickwork wall to basement cycle store - free area to meet ventilation requirements to basement

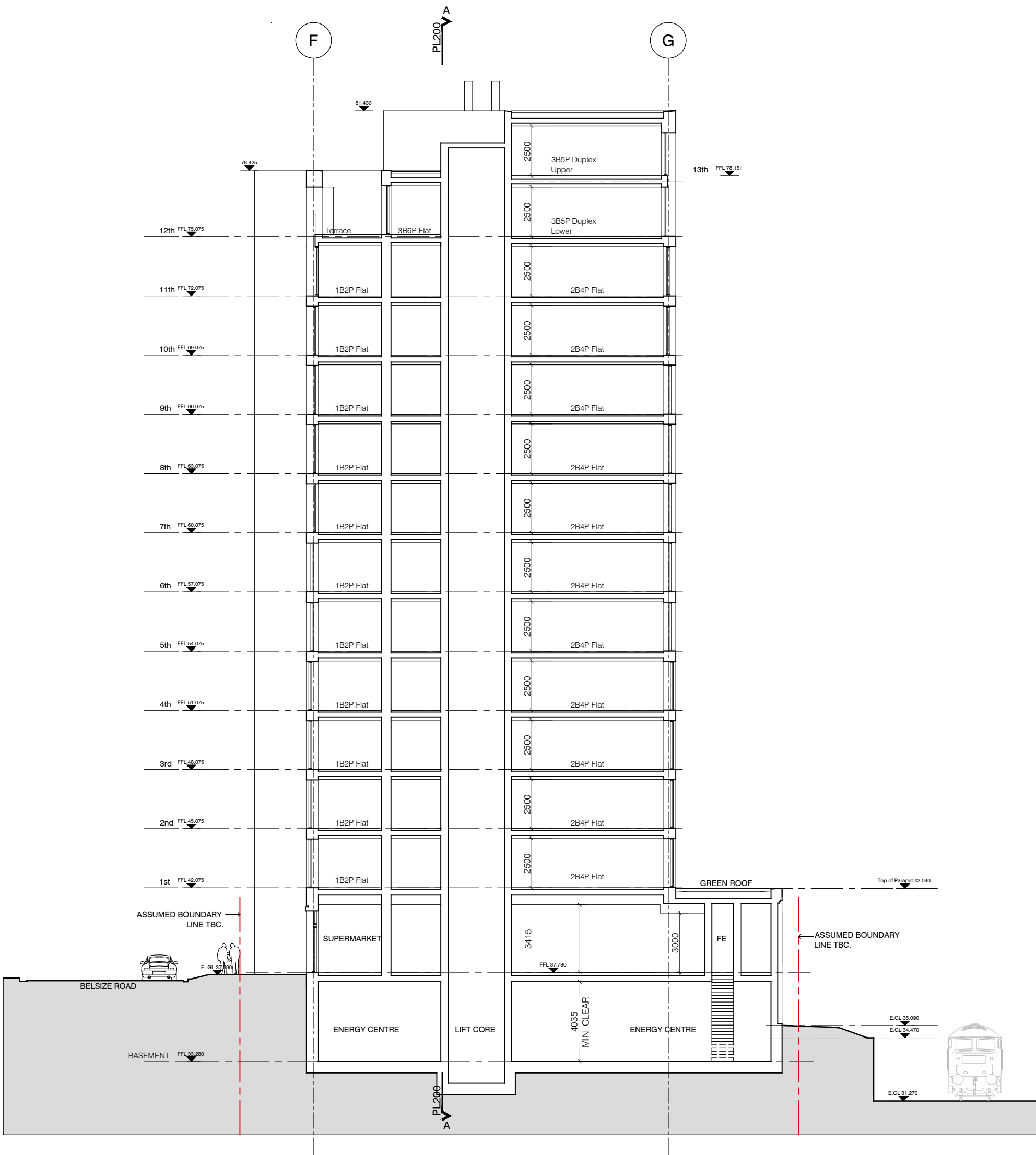
- O** - 1.2 m high Fagus sylvatica (beech) instant hedge planted in a double staggered row

- P** - Reconstituted Stone on fixing ancon bracket to form architrave detail to concierge/supermarket/retail entrances

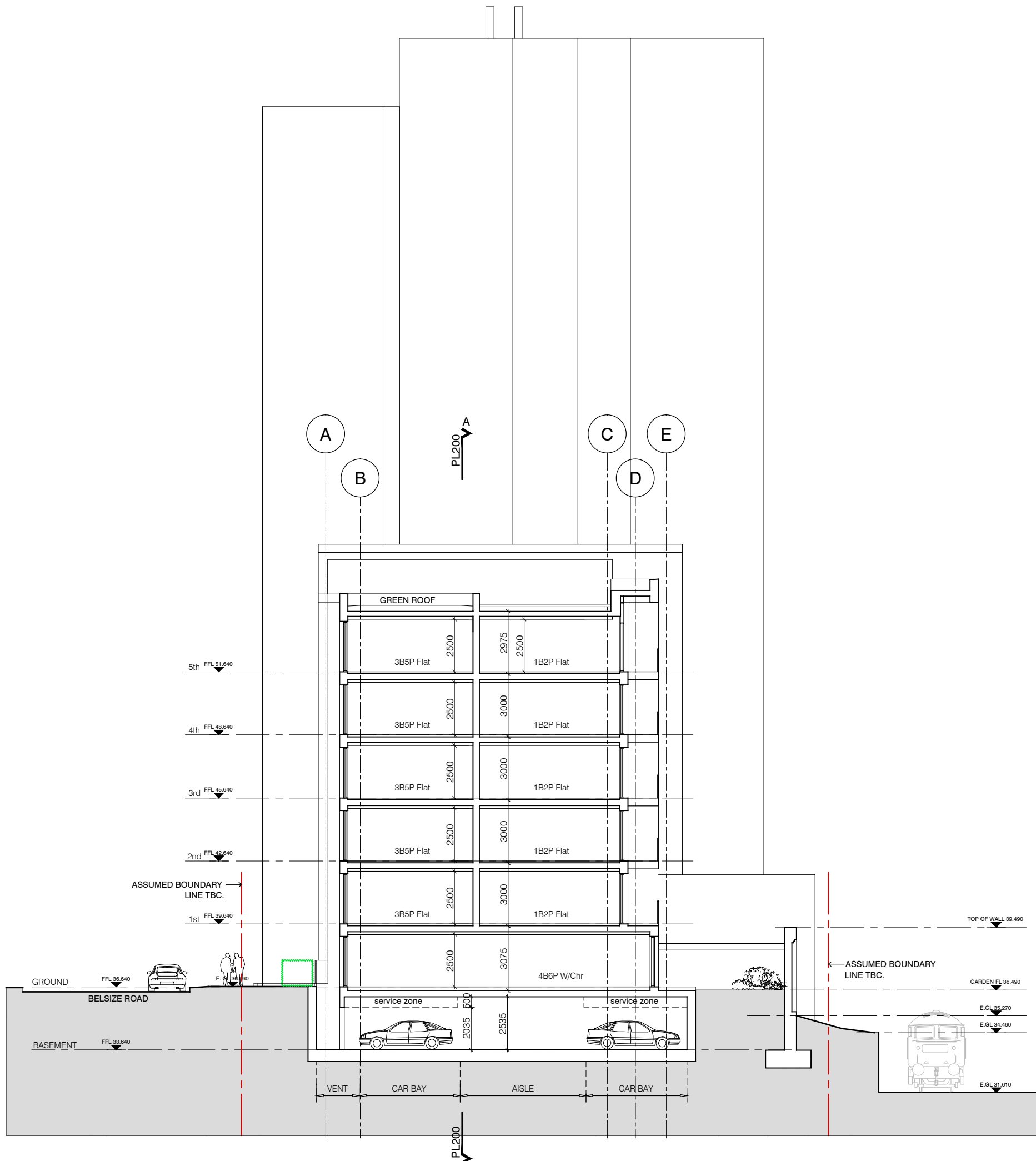
- Q** - Aluminium PPC louvred doors/panels to refuse store/car park ramp/fire exits



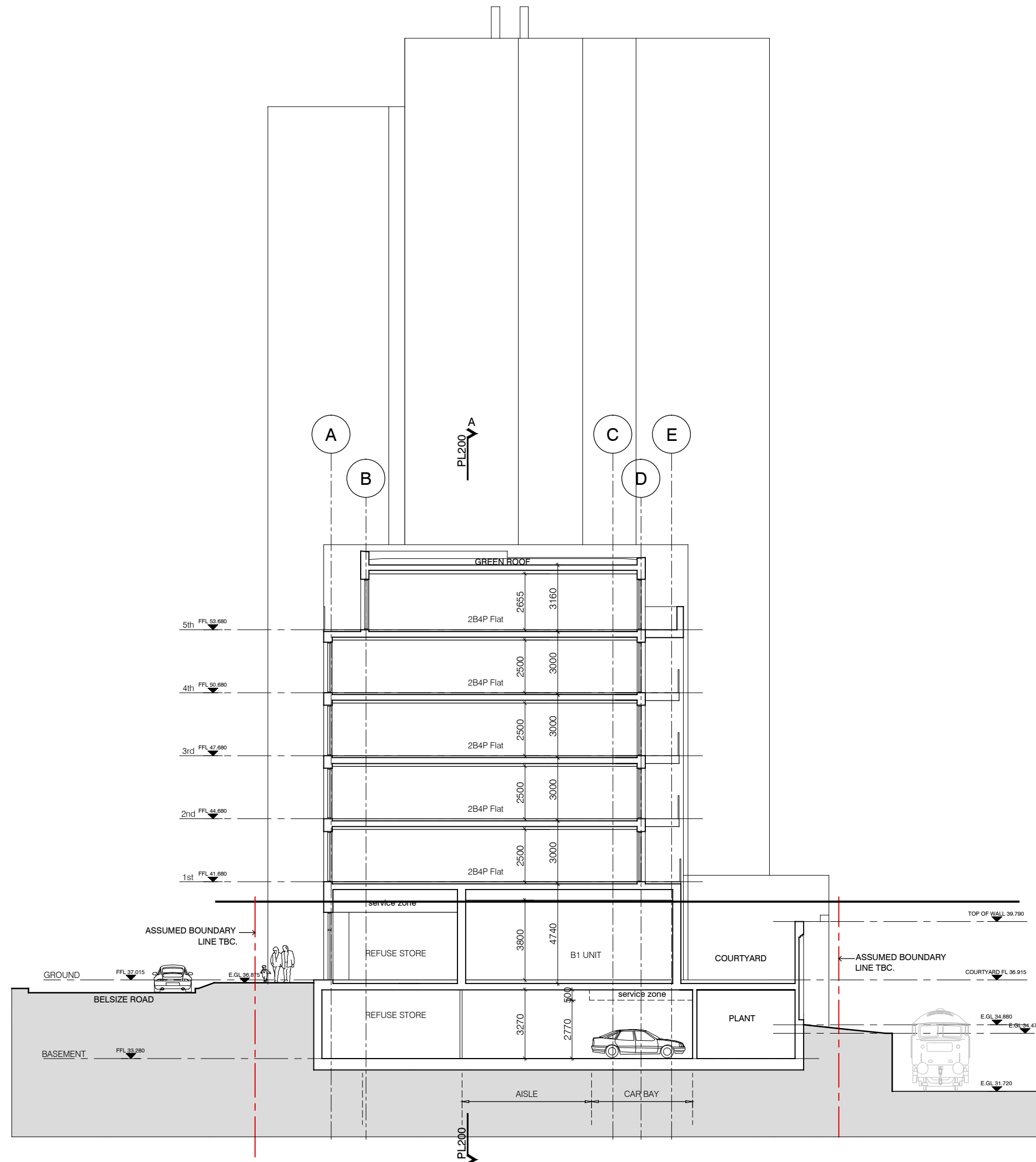
rev.	date	description	dm	aud
drawing status				
PLANNING				
Despeker Wharf 38 Graham Street London N1 8JX				
t: 020 7336 7777 w: www.ptea.co.uk f: 020 7336 0770 e: forename.surname@ptea.co.uk				
project ABBEY AREA REGENERATION - PHASE 1				
job no.	drawn	audited	scale	date
12_510	PT	DPD	1:200 @ A1	JUL 13
drawing title			fig. no.	rev.
GENERAL ARRANGEMENT 11th, 12th, 13th FLOOR & ROOF PLANS			510_1_PL_105	/



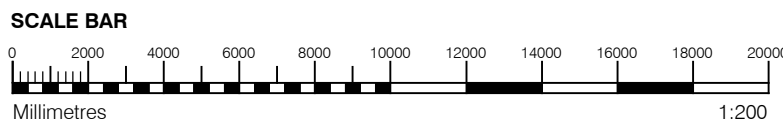
1 SECTION B-B
Through Block F



2 SECTION C-C
Through Block C



3 SECTION D-D
Through Block D



- GENERAL NOTES**
- This drawing is copyright of PTE architects
 - Use figured dimensions only. DO NOT SCALE.
 - All dimensions are in millimetres unless noted otherwise
 - All levels are in metres above ordnance datum unless noted otherwise
 - This drawing must be read in conjunction with all other relevant drawings and specifications from the Architect and other consultants
- NOTES**
- All setting out to be confirmed on site prior to construction - any discrepancy must be immediately reported to the Architect.

MATERIAL KEY

- A** - Brick work type 1: TYPE TO BE AGREED, stretcher bond brickwork with Cemex London White mortar or similar. Openings to have a deep brick reveal (approx 225mm unless stated otherwise).
- B** - Brick work type 2: TYPE TO BE AGREED but darker than Type 1, stretcher bond brickwork with Cemex London White mortar or similar. Allow for darker mortar to recessed brick walls. Openings to have a deep brick reveal (approx 225mm unless stated otherwise).
- C** - Glazed brickwork: TYPE TO BE AGREED, stack bonded, to Block F recessed balconies. Soffits to be brick slips (same brick specification as recessed walls), also stack bonded.
- D** - Metal panel: bronze effect panels with hidden fixings and minimal joints.

- E** - Shop front frameless glass curtain walling with 75mm aluminum capping at base, bronze effect aluminum framed double or triple glazed doors to match.

- F** - Windows / doors: bronze effect aluminum framed double or triple glazed units (manufacturer to be agreed).

- G** - Canopies: Pre-formed metal boxed canopy in bronze metallic finish with hidden structure and integral lighting.

- H** - Perforated metal balustrade or privacy screen: perforated metal (bronze metallic finish) supported off PPC coated frame with hidden fixings and minimal joints - allow for non-uniform setting out of perforations - details to be agreed.

- I** - Metal Railing Balustrade: formed from PPC vertical flats (approx 65 x 8mm)

- J** - Metal Railing Balustrade: formed from PPC vertical flats (approx 65 x 8mm) extending to balcony soffit with metal plate fascia fixed to balcony edge

- K** - Precast concrete or stone coping to parapet wall - allow for reinforcement back to structure.

- L** - Glass balustrade: frameless glass with no visible fixings.

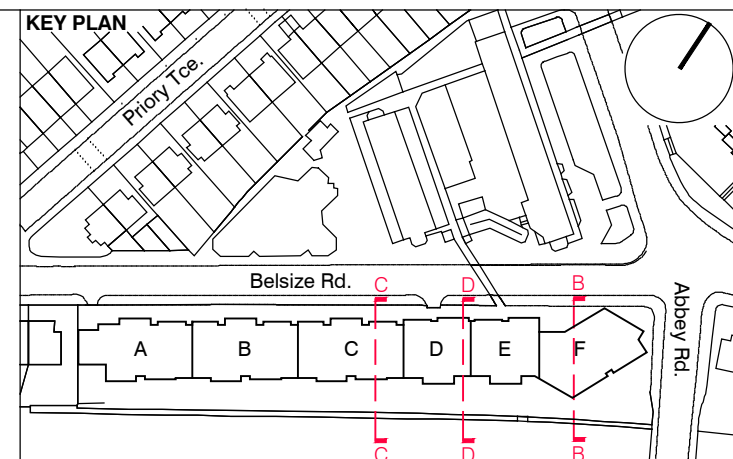
- M** - Residential Entrances: Glazed brickwork - mixed colours TYPES TO BE AGREED, stack bonded. Through-the-wall mailbox system (DAD or similar) with one-piece front plate with integrated door entry system - Colour to be agreed.

- N** - Hit and miss brickwork wall to basement cycle store - free area to meet ventilation requirements to basement

- O** - 1.2 m high Fagus sylvatica (beech) instant hedge planted in a double staggered row

- P** - Reconstituted Stone on fixing ancon bracket to form architrave detail to concierge/supermarket/retail entrances

- Q** - Aluminium PPC loured doors/panels to refuse store/car park ramp/fire exits



rev.	date	description	dm	aud
drawing status				
PLANNING				
Despiker Wharf 38 Graham Street London N1 6JX				
t: 020 7336 7777 w: www.ptea.co.uk f: 020 7336 0770 e: forename.surname@ptea.co.uk				
project ABBEY AREA REGENERATION-PHASE 1				
job no.	12_510	drawn	LG	audited
scale	1:200@A1	date	JUL 13	
drawing title			rev.	/
GENERAL ARRANGEMENT SHORT SECTION B-B, C-C & D-D			510_1_PL_201	