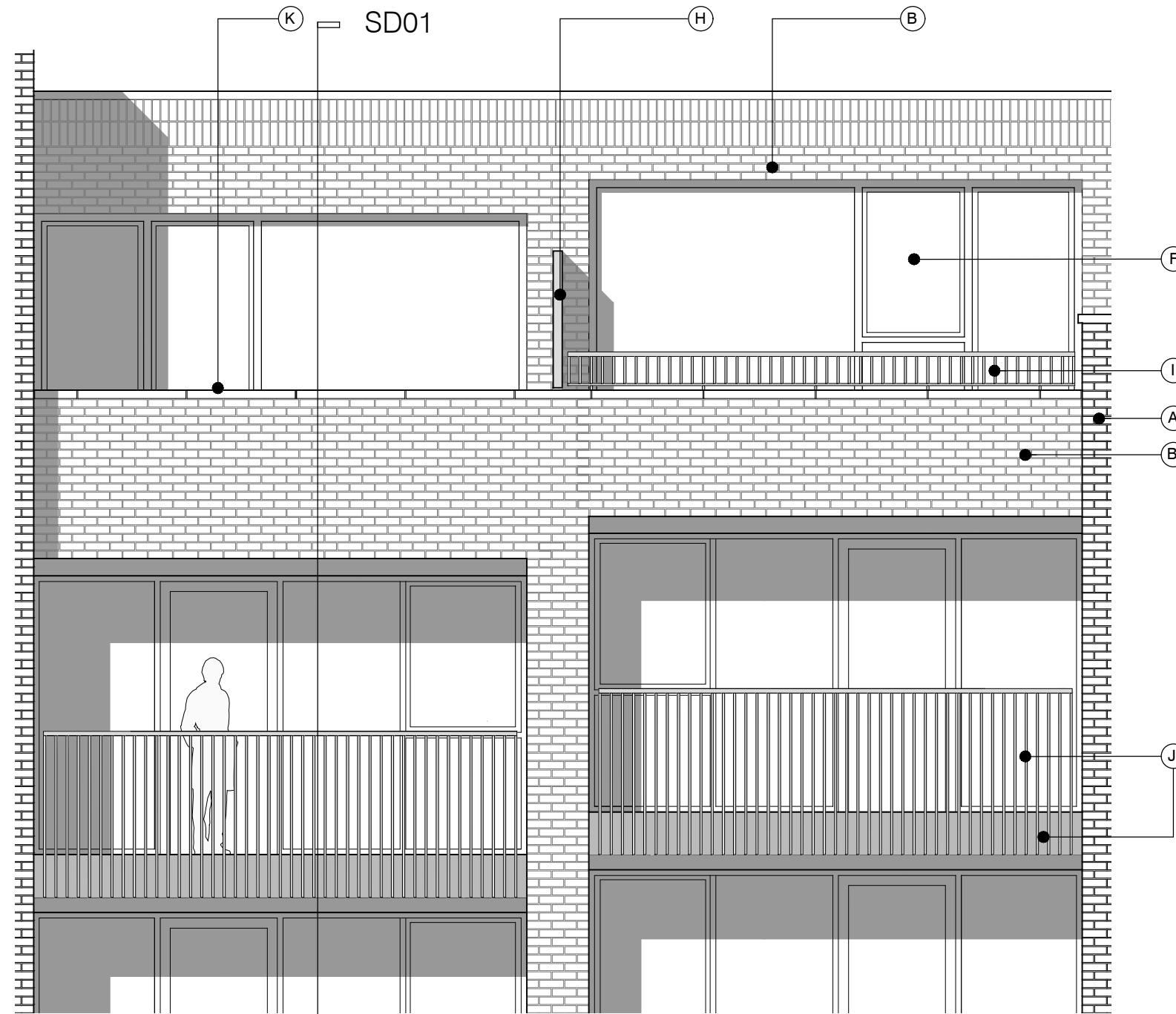
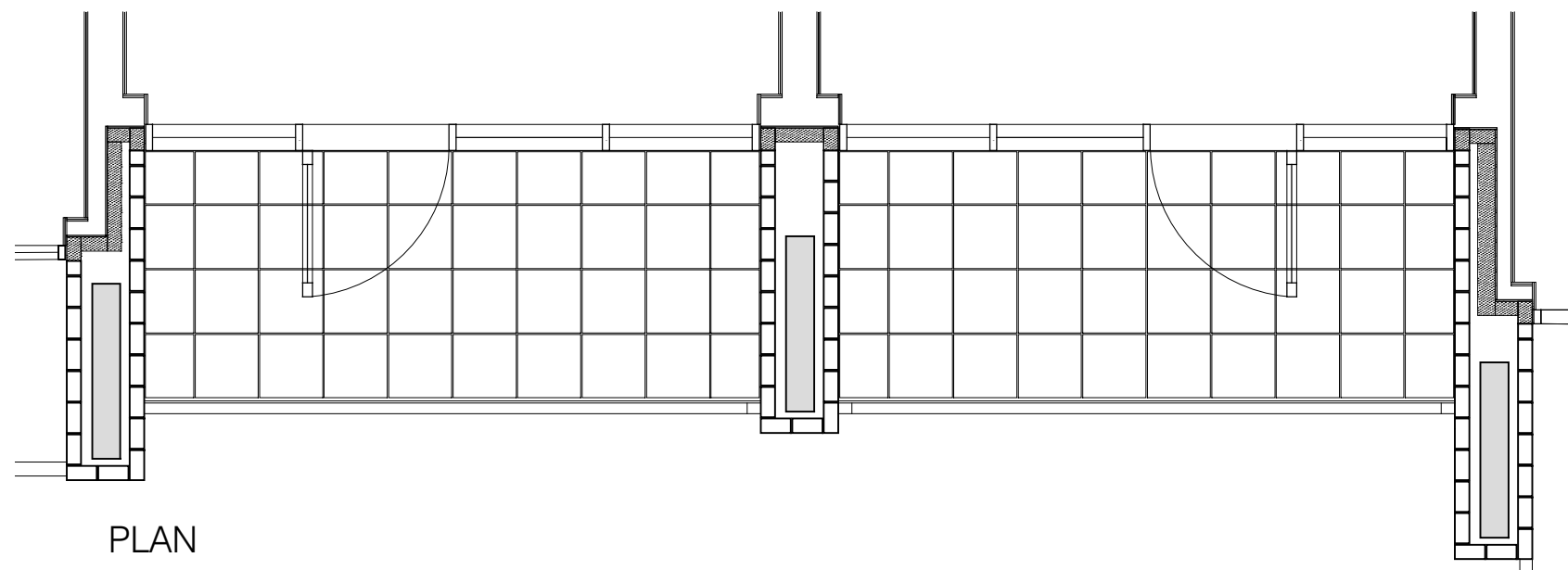


SECTION DETAIL 01



ELEVATION

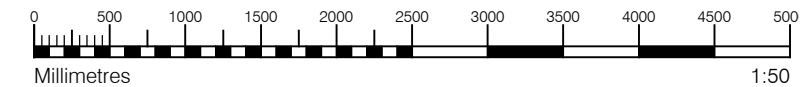


PLAN

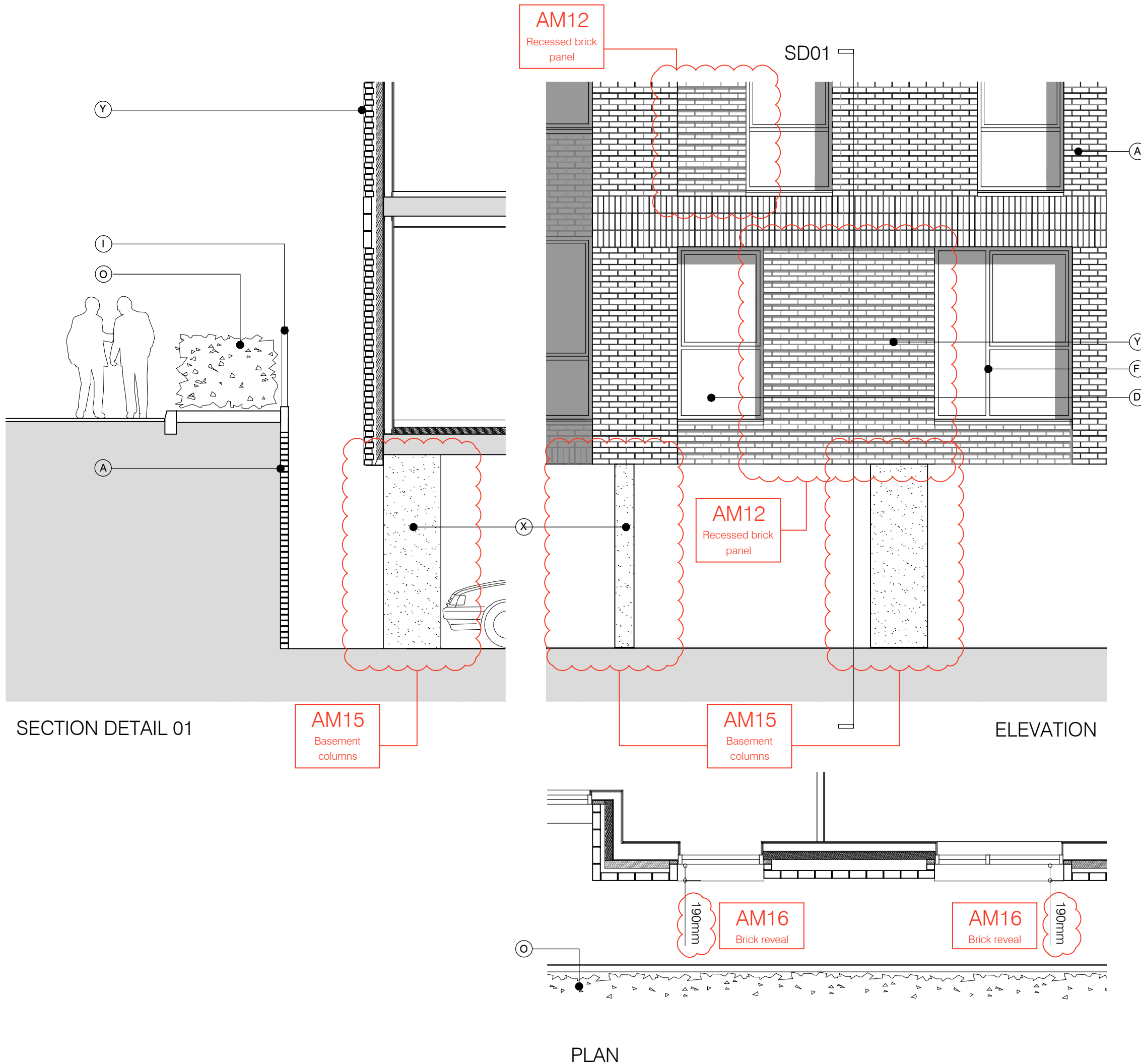
MATERIAL KEY

- A** - Brick work type 1: TYPE TO BE AGREED, stretcher bond brickwork with Cemex London White mortar or similar. Openings to have a deep brick reveal (approx 190mm unless stated otherwise).
- B** - Brick work type 2: TYPE TO BE AGREED but darker than Type 1, stretcher bond brickwork with Cemex London White mortar or similar. Allow for darker mortar to recessed brick walls. Openings to have a deep brick reveal (approx 190mm unless stated otherwise).
- F** - Windows / doors: bronze effect aluminum framed double or triple glazed units (manufacturer to be agreed).
- H** - Perforated metal balustrade or privacy screen: perforated metal (bronze metallic finish) supported off PPC coated frame with hidden fixings and minimal joints - allow for non-uniform setting out of perforations - details to be agreed
- I** - Metal Railing Balustrade: formed from PPC vertical flats (approx 65 x 8mm)
- J** - Metal Railing Balustrade: formed from PPC vertical flats (approx 65 x 8mm) extending to balcony soffit with metal plate fascia fixed to balcony edge
- K** - Precast concrete or stone coping to parapet wall - allow for reinforcement back to structure.
- S** - Balcony: Thermally broken in-situ cast concrete cantilevered balcony structure with 50mm thick stone pavers (pietra serena sandstone or similar)
- U** - Roofs: Insulated extensive green biodiverse roof with parapet wall

For specification, refer to Condition 26 parts (a) + (b) decision notice dated 22 October 2015, ref: 2015/3878/p



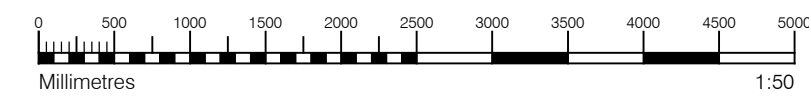
S73 APPLICATION							
B	21.06.16	Amendment references added. Material Key Updated. Issued to Planning				EN	DPD
A	15.04.16	Amendment references added. Material Key Updated. Issued to CBRE				BM	DPD
rev.	date	notes				dwn	aud
drawing status							
PLANNING							
Diespeker Wharf 38 Graham Street London N1 8JX						<b>PTEa</b> POLLARD THOMAS EDWARDS architects	
t:	020 7336 7777	w:	www.ptea.co.uk				
f:	020 7336 0770	e:	forename.surname@ptea.co.uk				
project	ABBEY AREA REGENERATION-PHASE 1 LONDON	job no.	12_510	drawn	EG	audited	DPD
scale	1:50@A1		date	JUL 13			
dwg title	INSET BALCONIES - SOUTH ELEVATION		dig. no.	510_1_PL_407		rev	B



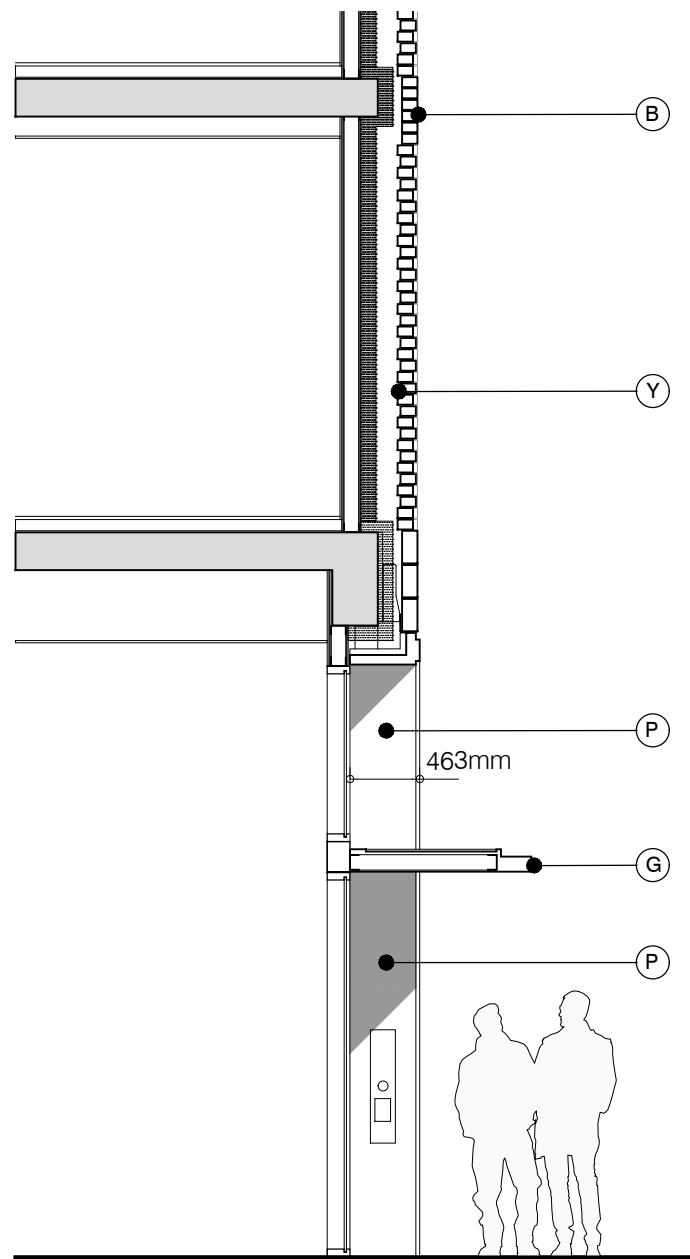
**MATERIAL KEY**

- A** - Brick work type 1: TYPE TO BE AGREED, stretcher bond brickwork with Cemex London White mortar or similar. Openings to have a deep brick reveal (approx 190mm unless stated otherwise).
- B** - Brick work type 2: TYPE TO BE AGREED but darker than Type 1, stretcher bond brickwork with Cemex London White mortar or similar. Allow for darker mortar to recessed brick walls. Openings to have a deep brick reveal (approx 190mm unless stated otherwise).
- D** - Metal panel: bronze effect panels with hidden fixings and minimal joints.
- F** - Windows / doors: bronze effect aluminum framed double or triple glazed units (manufacturer to be agreed).
- I** - Metal Railing Balustrade: formed from PPC vertical flats (approx 65 x 8mm)
- O** - 1.2 m high *Fagus sylvatica* (beech) instant hedge planted in a double staggered row
- Y** - Brick work type 2: Slightly recessed brick wall with stepped brick coursing
- X** - Exposed concrete structure in basement car park

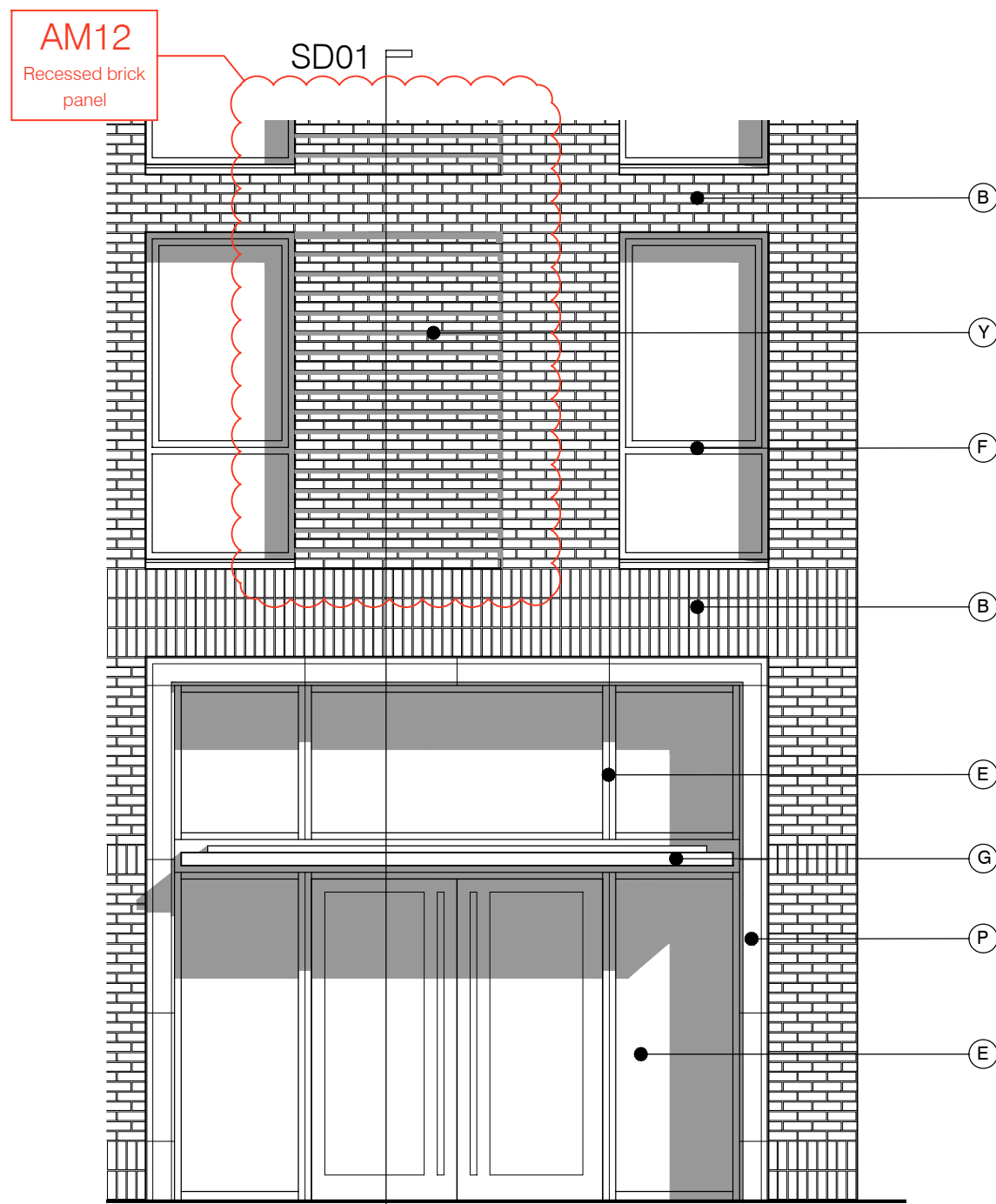
For specification, refer to Condition 26 parts (a) + (b) decision notice dated 22 October 2015, ref: 2015/3878/p



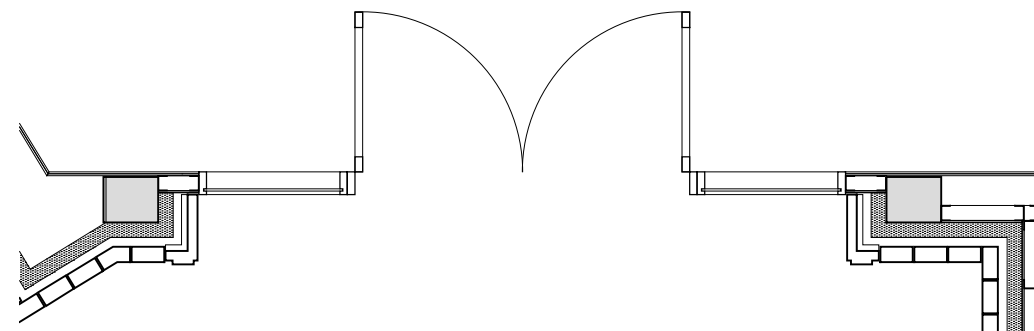
<b>S73 APPLICATION</b>											
B	21.06.16	Amendment references added. Material Key Updated. Issued to Planning			EN	DPD					
A	15.04.16	Amendment references added. Material Key Updated. Issued to CBRE			BM	DPD					
rev.	date	notes	drn	aud							
drawing status											
<b>PLANNING</b>											
Diespeker Wharf 38 Graham Street London N1 8JX				<b>PTEa</b> POLLARD THOMAS EDWARDS architects							
t: 020 7336 7777		w: www.ptea.co.uk									
f: 020 7336 0770		e: forename.surname@ptea.co.uk									
project	ABBEY AREA REGENERATION-PHASE 1 LONDON	job no.	12_510	drawn	EG	audited	DPD	scale	1:50@A1	date	JUL 13
dwg title	GROUND LEVEL/CARPARK BELSIZE ROAD		dwg. no.	510_1_PL_408		rev	B				



SECTION DETAIL 01



ELEVATION



PLAN

MATERIAL KEY

**B** - Brick work type 2: TYPE TO BE AGREED but darker than Type 1, stretcher bond brickwork with Cemex London White mortar or similar. Allow for darker mortar to recessed brick walls. Openings to have a deep brick reveal (approx 190mm unless stated otherwise).

**D** - Metal panel: bronze effect panels with hidden fixings and minimal joints.

**E** - Shop front frameless glass curtain walling with 75mm aluminum capping at base, bronze effect aluminum framed double or triple glazed doors to match.

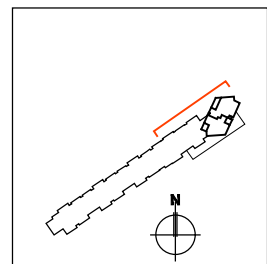
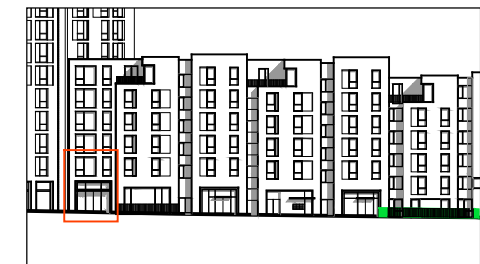
**F** - Windows / doors: bronze effect aluminum framed double or triple glazed units (manufacturer to be agreed).

**G** - Canopies: Pre-formed metal boxed canopy in bronze metallic finish with hidden structure and integral lighting.

**P** - Reconstituted Stone on fixing ancon bracket to form architrave detail to concierge/supermarket/retail entrances

**Y** - Brick work type 2: Slightly recessed brick wall with stepped brick coursing

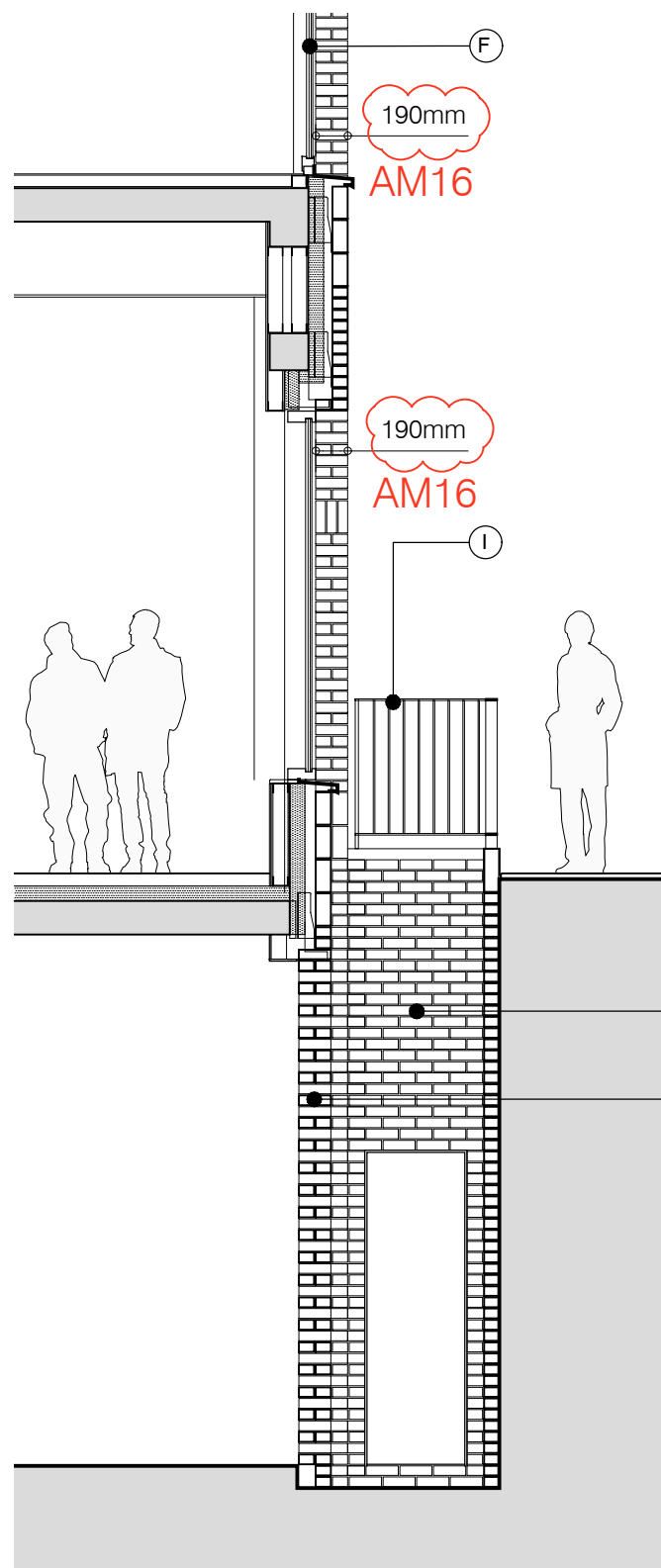
For specification, refer to Condition 26 parts (a) + (b) decision notice dated 22 October 2015, ref: 2015/3878/p



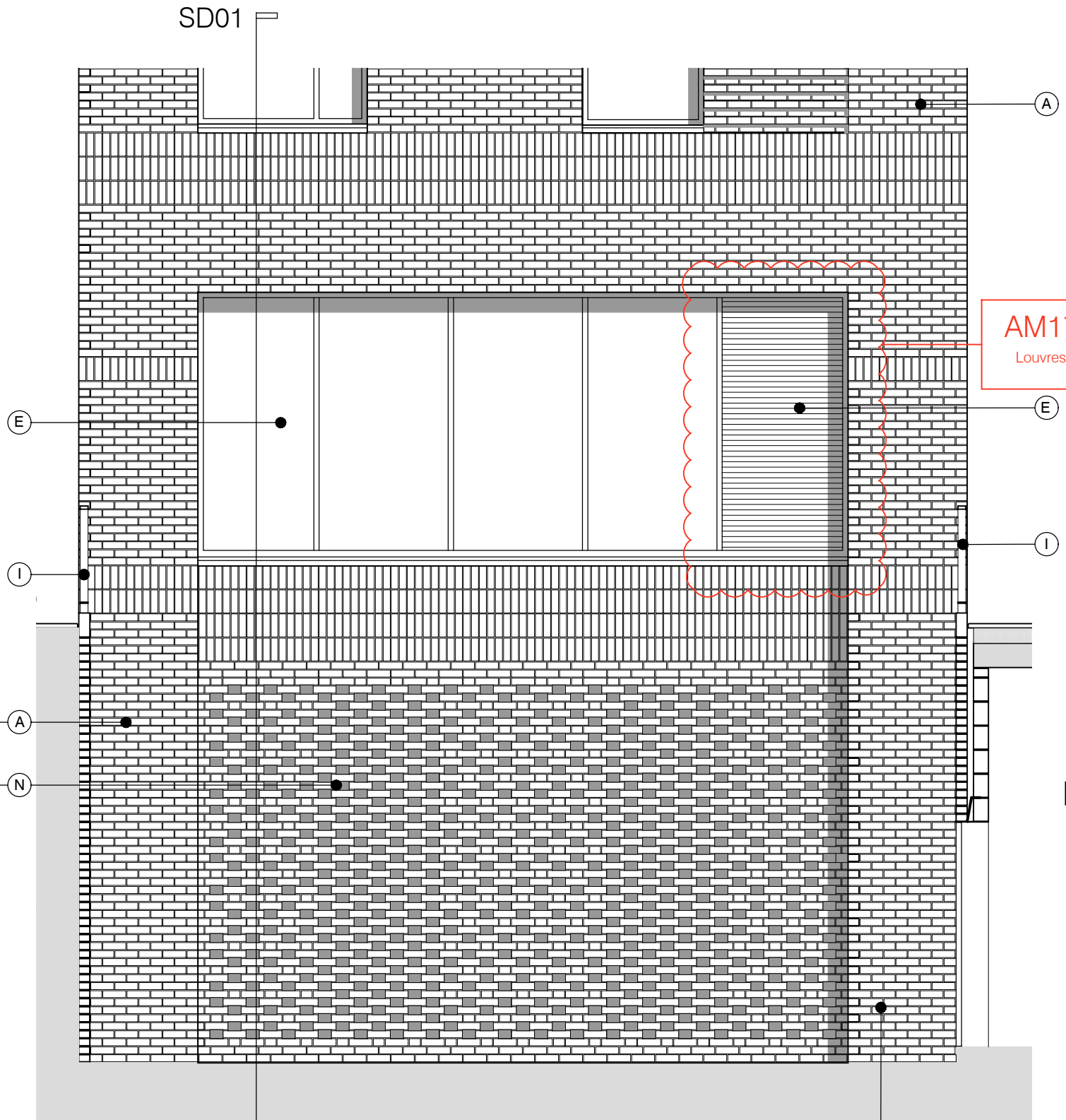
S73 APPLICATION

B	21.06.16	Amendment references added. Material Key Updated. Issued to Planning	EN	DPD
A	15.04.16	Amendment references added. Material Key Updated. Issued to CBRE	BM	DPD
rev.	date	notes	drn	aud

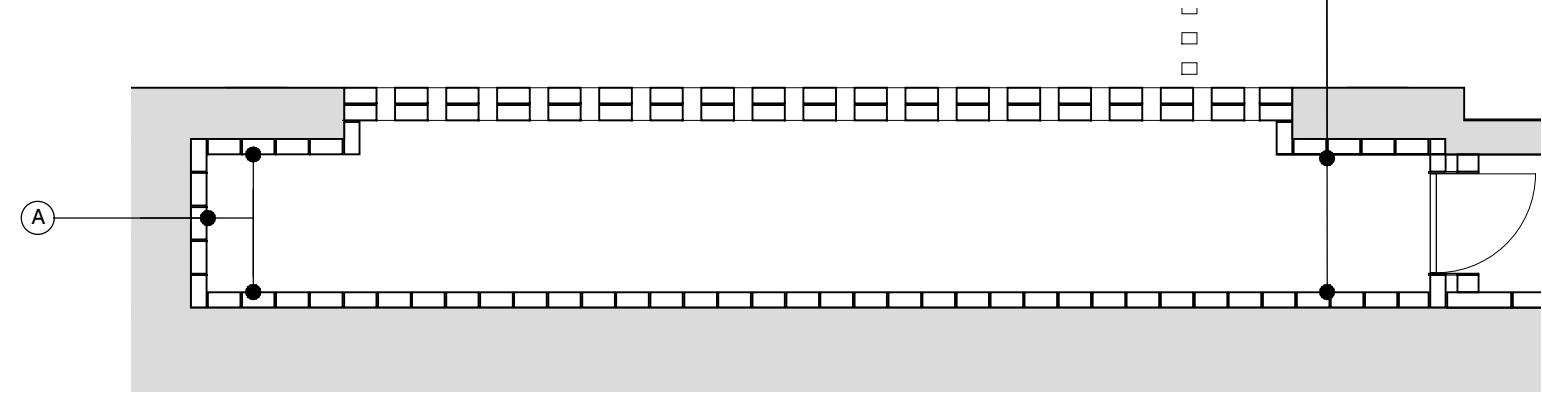
drawing status					<b>PLANNING</b>	
Diespeker Wharf 38 Graham Street London N1 8JX			<b>PTEa</b> POLLARD THOMAS EDWARDS architects			
t:	020 7336 7777	w:	www.ptea.co.uk			
f:	020 7336 0770	e:	forename.surname@ptea.co.uk			
project	ABBEY AREA REGENERATION-PHASE 1 LONDON	job no.	12_510	drawn	EG	
		audited	DPD	scale	1:50@A1	
date	JUL 13					
dwg title	CONCIERGE	dig. no.	510_1_PL_409	rev	B	



SECTION DETAIL 01



ELEVATION

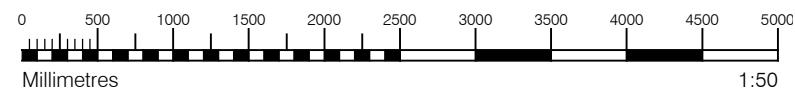


PLAN

**MATERIAL KEY**

- A** - Brick work type 1: TYPE TO BE AGREED, stretcher bond brickwork with Cemex London White mortar or similar. Openings to have a deep brick reveal (approx 190mm unless stated otherwise).
- B** - Brick work type 2: TYPE TO BE AGREED but darker than Type 1, stretcher bond brickwork with Cemex London White mortar or similar. Allow for darker mortar to recessed brick walls. Openings to have a deep brick reveal (approx 190mm unless stated otherwise).
- E** - Shop front frameless glass curtain walling with 75mm aluminum capping at base, bronze effect aluminum framed double or triple glazed doors to match. Louvred panels to be same finish.
- F** - Windows / doors: bronze effect aluminum framed double or triple glazed units (manufacturer to be agreed).
- I** - Metal Railing Balustrade: formed from PPC vertical flats (approx 65 x 8mm)
- N** - Hit and miss brickwork wall to basement cycle store - free area to meet ventilation requirements to basement
- Y** - Brick work type 2: Slightly recessed brick wall with stepped brick coursing

For specification, refer to Condition 26 parts (a) + (b) decision notice dated 22 October 2015, ref: 2015/3878/p



S73 APPLICATION											
rev.	date	notes	drn	aud	EN	DPD					
B	21.06.16	Amendment references added. Material Key Updated. Issued to Planning			EN	DPD					
A	15.04.16	Amendment references added. Material Key Updated. Issued to Planning			BM	DPD					
drawing status: <b>PLANNING</b>											
Diespeker Wharf 38 Graham Street London N1 8JX				<b>PTEa</b> POLLARD THOMAS EDWARDS architects							
t:	020 7336 7777	w:	www.ptea.co.uk								
f:	020 7336 0770	e:	forename.surname@ptea.co.uk								
project	ABBEY AREA REGENERATION-PHASE 1 LONDON	job no.	12_510	drawn	EG	audited	DPD	scale	1:50@A1	date	JUL 13
dwg title	VENTILATION VOID		dig. no.	510_1_PL_410		rev	B				