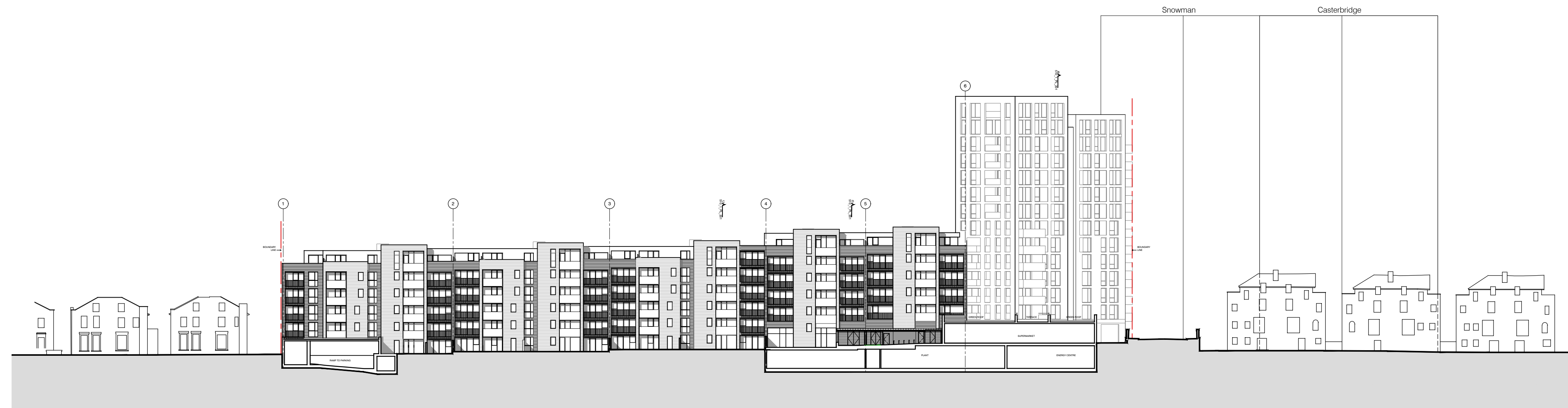
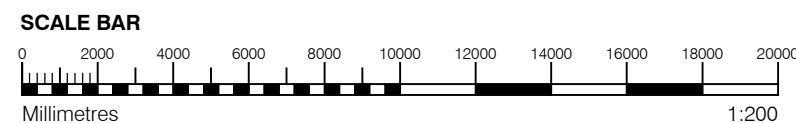




1 SOUTH ELEVATION
1:200



2 SOUTH SITE ELEVATION
1:500



GENERAL NOTES

- This drawing is copyright of PTE architects
- Use figured dimensions only. DO NOT SCALE.
- All dimensions are in millimetres unless noted otherwise
- All levels are in metres above Ordnance datum unless noted otherwise
- This drawing must be read in conjunction with all other relevant drawings and specifications from the Architect and other consultants

NOTES

- All setting out to be confirmed on site prior to construction - any discrepancy must be immediately reported to the Architect.

MATERIAL KEY

- A** - Brick work type 1: Red Brick, stretcher bond with light colour mortar. Openings to have a deep brick reveal (approx 190mm unless stated otherwise).
- B** - Brick work type 2: Reflective blue/purple Brick, stretcher bond with dark grey mortar. Openings to have a deep brick reveal (approx 190mm unless stated otherwise).
- C** - Brick work type 3: White glazed brick, stack bonded with white colour mortar, to Block F recessed balconies.
- D** - Metal panel: bronze effect panels with hidden fixings and minimal joints.

- E** - Shop front frameless glass curtain walling with 75mm aluminum capping at base, bronze effect aluminum framed double or triple glazed doors to match.
- F** - Windows / doors: PPC aluminum framed double or triple glazed units (manufacturer to be agreed).

- G** - Canopies: Pre-formed metal boxed canopy in bronze metallic finish with hidden structure and integral lighting.
- H** - Perforated metal balustrade or privacy screen: perforated metal (bronze metallic finish) supported off PPC coated frame with hidden fixings and minimal joints - allow for non-uniform setting out of perforations - details to be agreed.

- I** - Metal Railing Balustrade: formed from PPC vertical flats (approx 50 x 12mm).
- J** - Metal Railing Balustrade: formed from PPC vertical flats (approx 50 x 12mm) extending to balcony soffit with metal plate fascia fixed to balcony edge.

- K** - Precast concrete or stone coping to parapet wall - allow for reinforcement back to structure.
- L** - Glass balustrade: frameless glass with no visible fixings.

- M** - Brick work type 4: Green Glazed brickwork, stack bonded to residential entrances

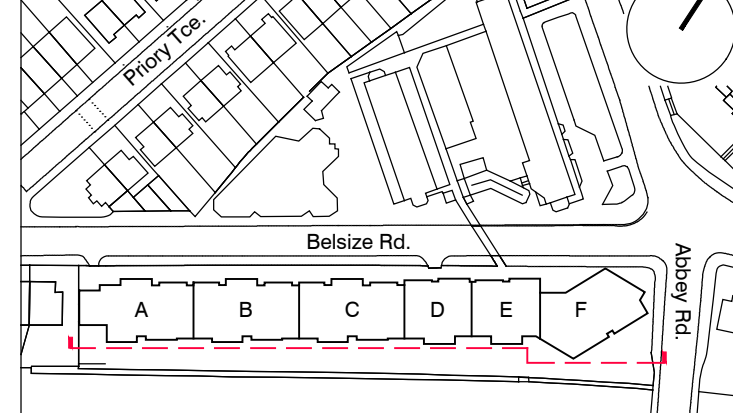
- N** - Hit and miss brickwork wall to basement cycle store - free area to meet ventilation requirements to basement.
- O** - 1.2 m high Fagus sylvatica (beech) instant hedge planted in a double staggered row.

- P** - Reconstituted Stone on fixing ancon bracket to form architrave detail to concierge/supermarket/retail entrances.
- Q** - Aluminium PPC louvre doors/panels to refuse store/car park ramp/fire exits/substation/vent intake or exhaust locations.

- R** - Brick work type 2: Slightly recessed brick wall with stepped brick coursing.
- S** - Close boarded timber fence to meet Acoustic requirements.

- T** - Brick work type 5: Reduced specification / off-shade brick wall forming retaining structure.

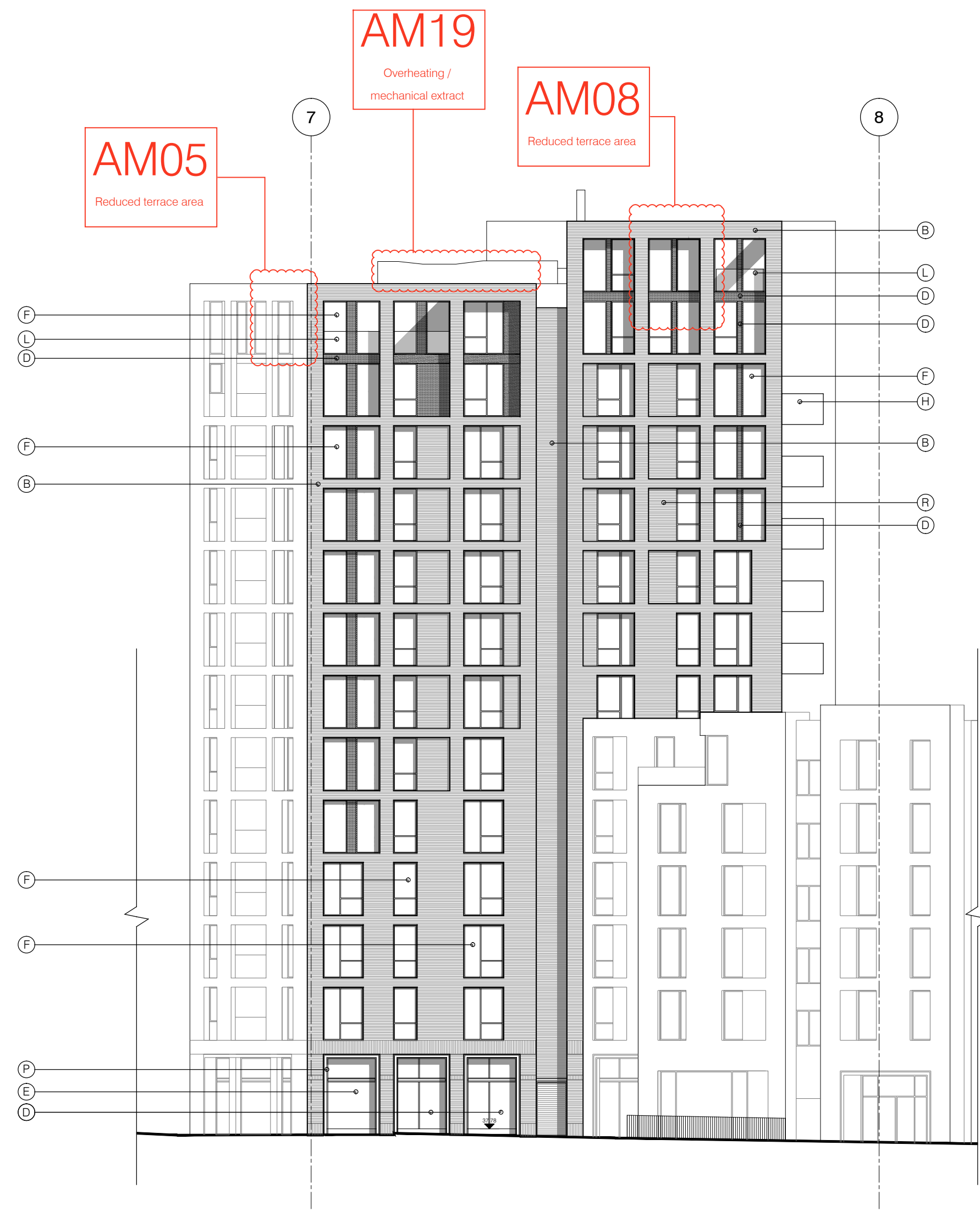
KEY PLAN



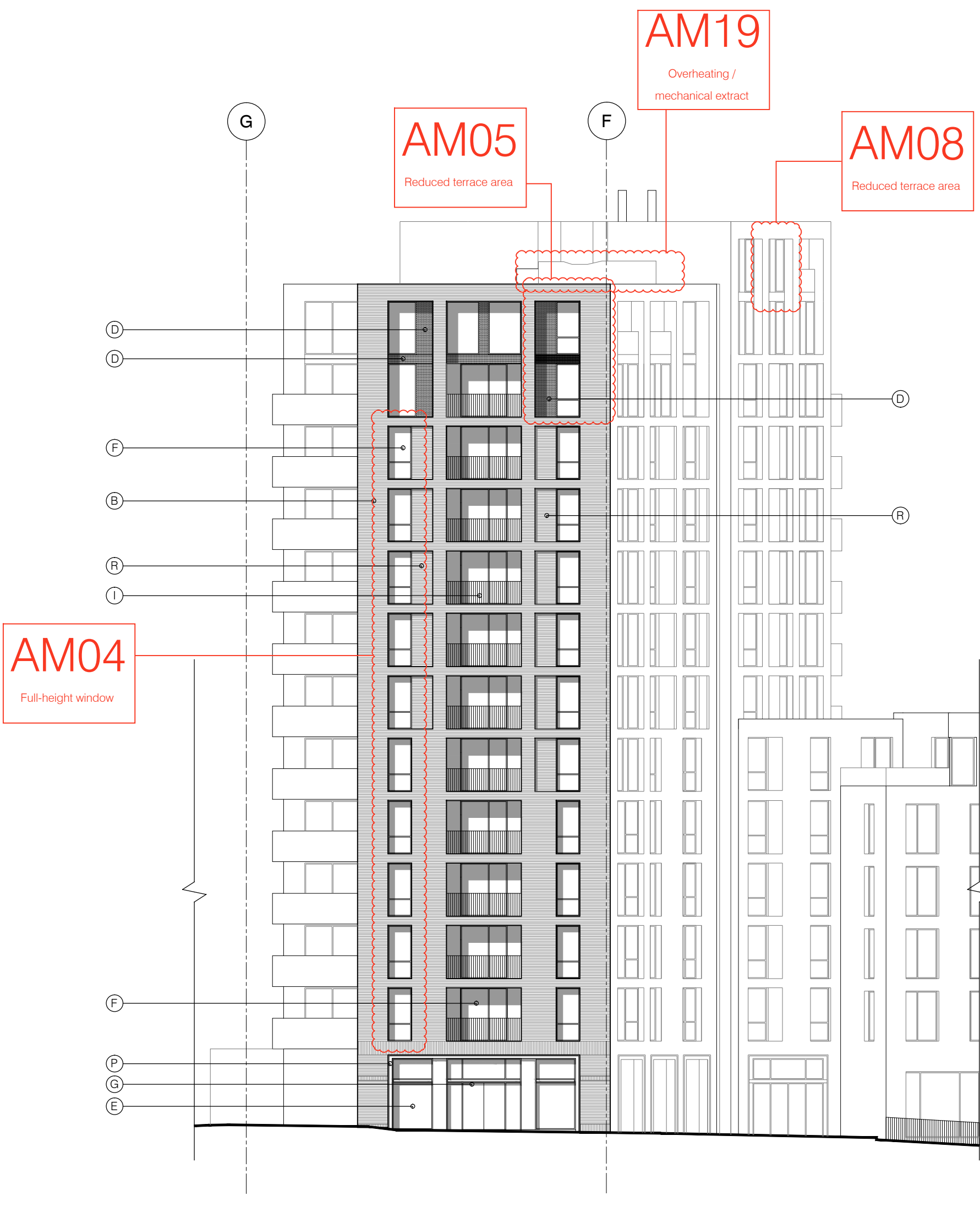
SECTION 73 APPLICATION				
E	21.06.16	Amendment references added. Material Key updated. Issued to planning	EN	DPD
D	15.04.16	Amendment references added. Material Key updated. Issued to CBRE	DPD	DB
C	18.12.15	Amendment references added. Issued to CBRE	PJ	DPD
B	04.10.13	Issue for information	BM	DPD
A	02.09.13	Drawing amended and issued to design team for comment.	RL	DPD
rev.	date	description	dm	aut

PLANNING

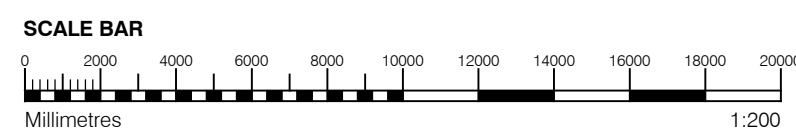
Diespeker Wharf 38 Graham Street London N1 8JX				
t: 020 7336 7777 f: 020 7336 0770		w: www.ptea.co.uk e: forename.surname@ptea.co.uk		
project ABBEY AREA REGENERATION-PHASE 1 LONDON	job no. 12_510	drawn LG	audited DPD	scale 1:200@A1
draw title GENERAL ARRANGEMENT SOUTH ELEVATION & SOUTH SITE ELEVATIONS	fig. no. 510_1_PL_302	date JUL 13	rev E	



1 LANDMARK BUILDING TRUE ELEVATION- NORTH
1:200



2 LANDMARK BUILDING TRUE ELEVATION- EAST
1:200



GENERAL NOTES

- This drawing is copyright of PTE architects
- Use figured dimensions only. DO NOT SCALE.
- All dimensions are in millimetres unless noted otherwise
- All levels are in metres above ordnance datum unless noted otherwise
- This drawing must be read in conjunction with all other relevant drawings and specifications from the Architect and other consultants

NOTES

- All setting out to be confirmed on site prior to construction - any discrepancy must be immediately reported to the Architect.

MATERIAL KEY

A - Brick work type 1: Red Brick, stretcher bond with light colour mortar. Openings to have a deep brick reveal (approx 190mm unless stated otherwise).

B - Brick work type 2: Reflective blue/purple Brick, stretcher bond with dark grey mortar. Openings to have a deep brick reveal (approx 190mm unless stated otherwise).

C - Brick work type 3: White glazed brick, stack bonded with white colour mortar, to Block F recessed balconies.

D - Metal panel: bronze effect panels with hidden fixings and minimal joints.

E - Shop front frameless glass curtain walling with 75mm aluminum capping at base, bronze effect aluminum framed double or triple glazed doors to match.

F - Windows / doors: PPC aluminum framed double or triple glazed units (manufacturer to be agreed).

G - Canopies: Pre-formed metal boxed canopy in bronze metallic finish with hidden structure and integral lighting.

H - Perforated metal balustrade or privacy screen: perforated metal (bronze metallic finish) supported off PPC coated frame with hidden fixings and minimal joints - allow for non-uniform setting out of perforations - details to be agreed.

I - Metal Railing Balustrade: formed from PPC vertical flats (approx 50 x 12mm).

J - Metal Railing Balustrade: formed from PPC vertical flats (approx 50 x 12mm) extending to balcony soffit with metal plate fascia fixed to balcony edge.

K - Precast concrete or stone coping to parapet wall - allow for reinforcement back to structure.

L - Glass balustrade: frameless glass with no visible fixings.

M - Brick work type 4: Green Glazed brickwork, stack bonded to residential entrances

N - Hit and miss brickwork wall to basement cycle store - free area to meet ventilation requirements to basement.

O - 1.2 m high Fagus sylvatica (beech) instant hedge planted in a double staggered row.

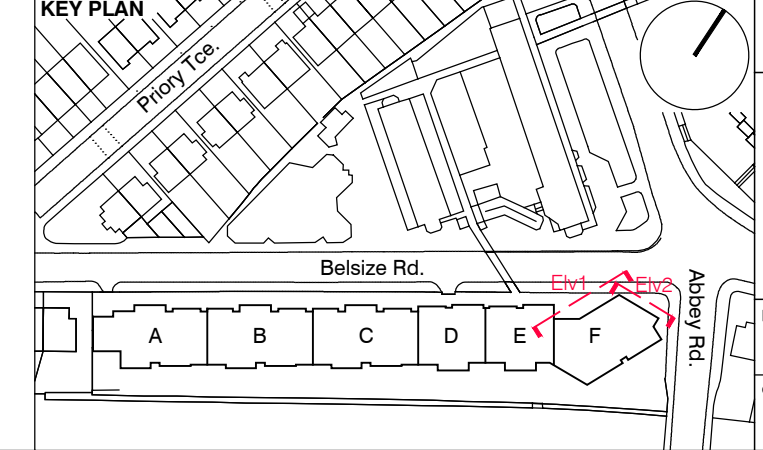
P - Reconstituted Stone on fixing ancon bracket to form architrave detail to concierge/supermarket/retail entrances.

Q - Aluminium PPC louvred doors/panels to refuse store/car park ramp/fire exits/substation/vent intake or exhaust locations.

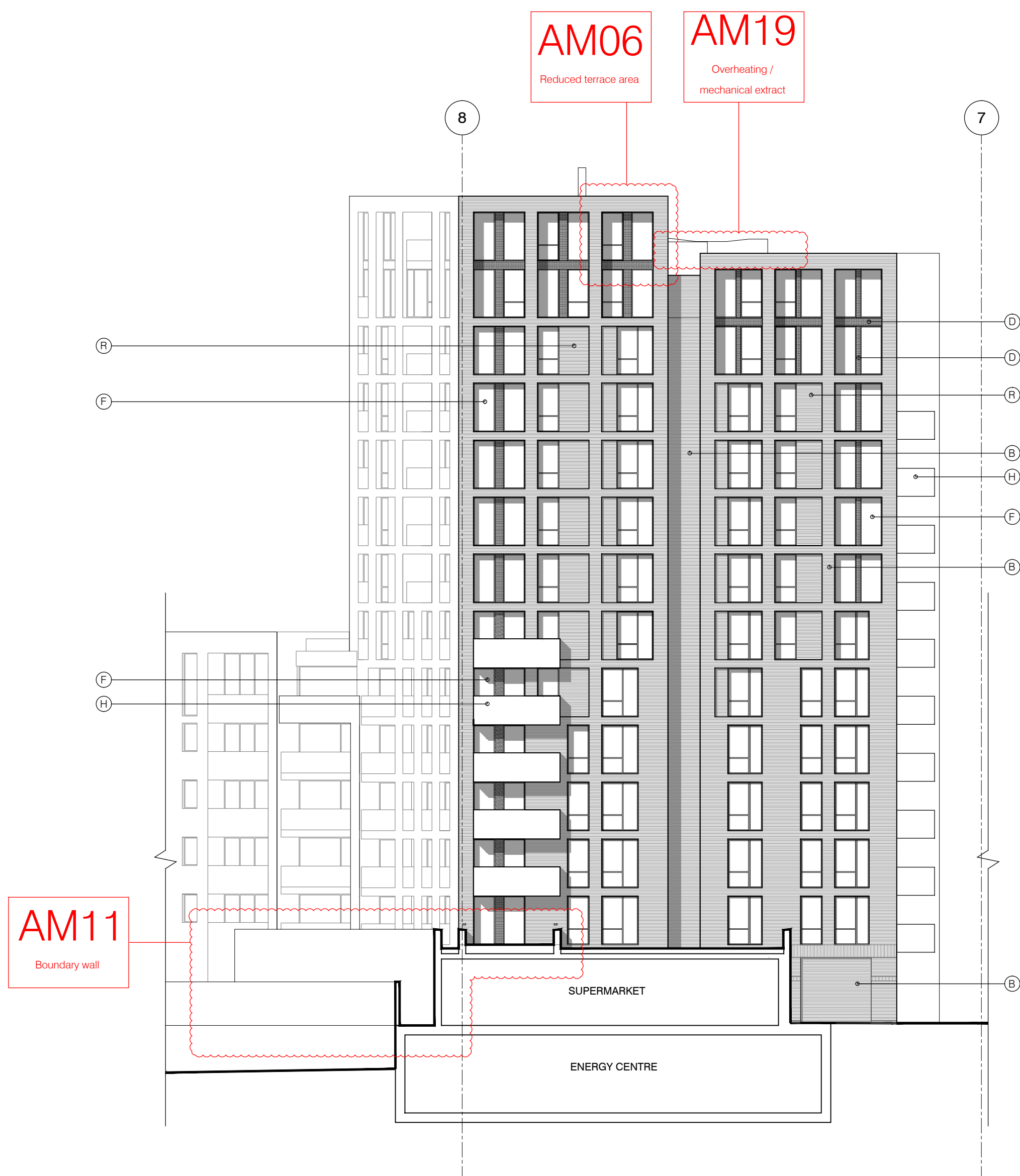
R - Brick work type 2: Slightly recessed brick wall with stepped brick coursing.

S - Close boarded timber fence to meet Acoustic requirements.

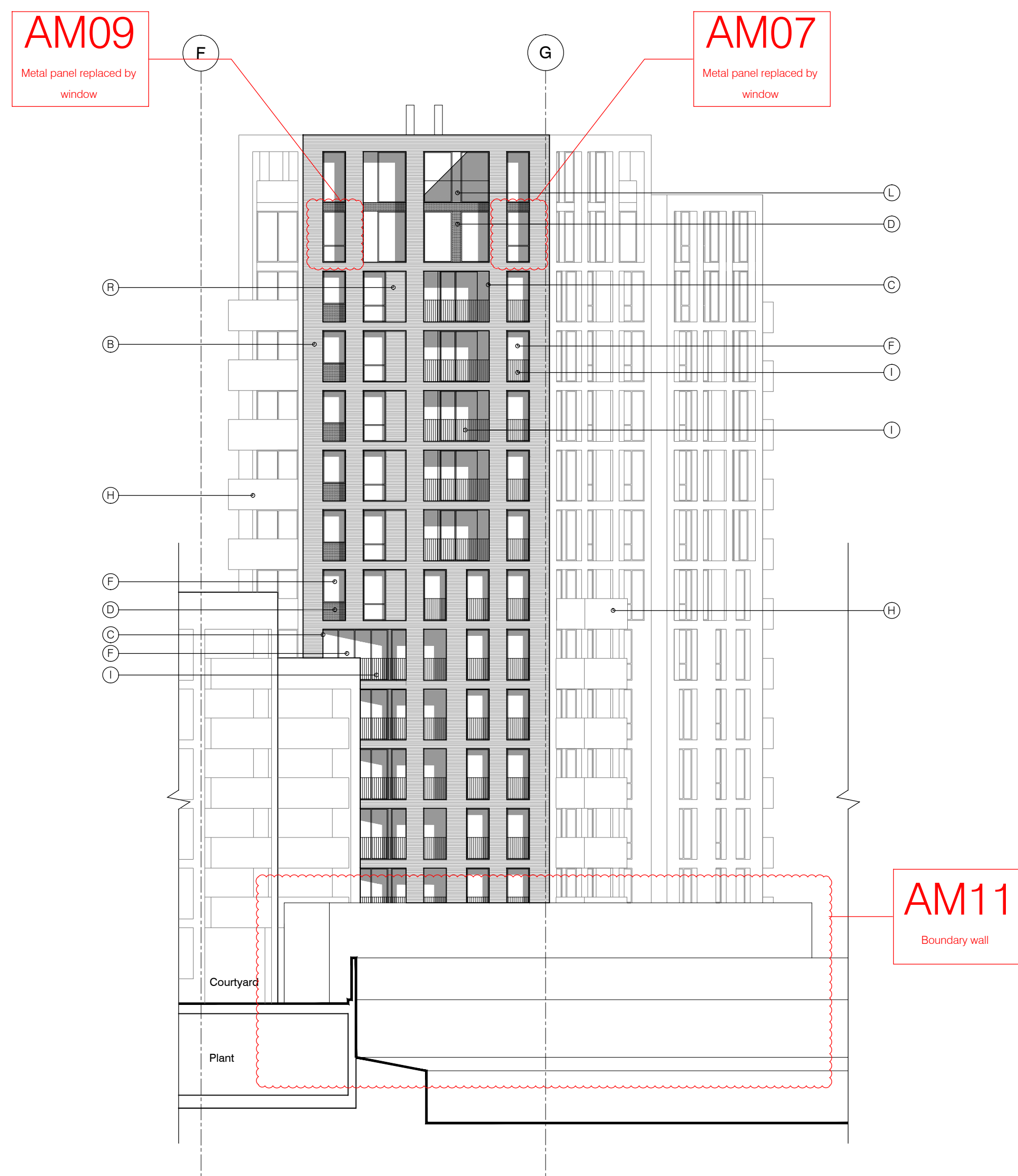
T - Brick work type 5: Reduced specification / off-shade brick wall forming retaining structure.



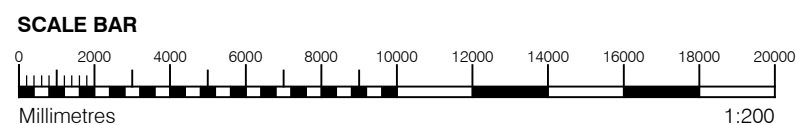
SECTION 73 APPLICATION						
F	04.08.16	Amendment 19 added. Issued to planning			DPD	EN
E	21.06.16	Amendment references added. Material Key updated. Issued to CBRE			EN	DPD
D	15.04.16	Amendment references added. Material Key updated. Issued to CBRE			DPD	DB
C	18.12.15	Amendment references added. Issued to CBRE			BM	DPD
B	08.10.13	Issue for information			BM	DPD
A	04.10.13	Block F Fire exit elevation			BM	DPD
rev.	date	description			dm	aud
drawing status						
PLANNING						
<div>Despcker Wharf 38 Graham Street London N1 8JX</div> <div><div></div><div>PTEa</div><div>FOLLARD THOMAS EDWARDS architects</div></div>						
t: 020 7336 7777 f: 020 7336 0770		w: www.ptea.co.uk e: forename.surname@ptea.co.uk				
project ABBEE AREA REGENERATION-PHASE 1 LONDON		job.no. 12_510	drawn BM	audited DPD	scale 1:200@A1	date JUL 13
step title GENERAL ARRANGEMENT LANDMARK BUILDING TRUE ELEVATION-NORTH & EAST		step no. 510 = 1_PL_303			rev F	



1 LANDMARK BUILDING TRUE ELEVATION- SOUTH
1:200



2 LANDMARK BUILDING TRUE ELEVATION- WEST
1:200



GENERAL NOTES

- This drawing is copyright of PTE architects
- Use figured dimensions only. DO NOT SCALE.
- All dimensions are in millimetres unless noted otherwise
- All levels are in metres above ordnance datum unless noted otherwise
- This drawing must be read in conjunction with all other relevant drawings and specifications from the Architect and other consultants

NOTES

- All setting out to be confirmed on site prior to construction - any discrepancy must be immediately reported to the Architect.

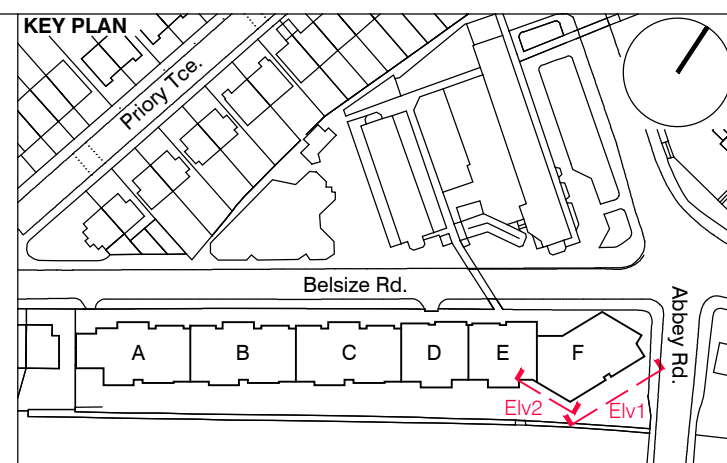
MATERIAL KEY

- A** - Brick work type 1: Red Brick, stretcher bond with light colour mortar. Openings to have a deep brick reveal (approx 190mm unless stated otherwise).
- B** - Brick work type 2: Reflective blue/purple Brick, stretcher bond with dark grey mortar. Openings to have a deep brick reveal (approx 190mm unless stated otherwise).
- C** - Brick work type 3: White glazed brick, stack bonded with white colour mortar, to Block F recessed balconies.
- D** - Metal panel: bronze effect panels with hidden fixings and minimal joints.
- E** - Shop front frameless glass curtain walling with 75mm aluminum capping at base, bronze effect aluminum framed double or triple glazed doors to match.
- F** - Windows / doors: PPC aluminum framed double or triple glazed units (manufacturer to be agreed).
- G** - Canopies: Pre-formed metal boxed canopy in bronze metallic finish with hidden structure and integral lighting.
- H** - Perforated metal balustrade or privacy screen: perforated metal (bronze metallic finish) supported off PPC coated frame with hidden fixings and minimal joints - allow for non-uniform setting out of perforations - details to be agreed.

- I** - Metal Railing Balustrade: formed from PPC vertical flats (approx 50 x 12mm).
- J** - Metal Railing Balustrade: formed from PPC vertical flats (approx 50 x 12mm) extending to balcony soffit with metal plate fascia fixed to balcony edge.
- K** - Precast concrete or stone coping to parapet wall - allow for reinforcement back to structure.
- L** - Glass balustrade: frameless glass with no visible fixings.
- M** - Brick work type 4: Green Glazed brickwork, stack bonded to residential entrances

- N** - Hit and miss brickwork wall to basement cycle store - free area to meet ventilation requirements to basement.
- O** - 1.2 m high Fagus sylvatica (beech) instant hedge planted in a double staggered row.
- P** - Reconstituted Stone on fixing ancon bracket to form architrave detail to concierge/supermarket/retail entrances.
- Q** - Aluminium PPC louvred doors/panels to refuse store/car park ramp/fire exits/substation/vent intake or exhaust locations.

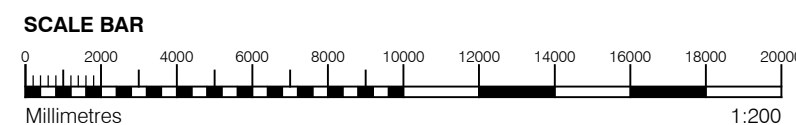
- R** - Brick work type 2: Slightly recessed brick wall with stepped brick coursing.
- S** - Close boarded timber fence to meet Acoustic requirements.
- T** - Brick work type 5: Reduced specification / off-shade brick wall forming retaining structure.



SECTION 73 APPLICATION						
D	04.08.16	Amendment 19 added. Issued to planning		DPD	EN	
C	21.06.16	Amendment references added. Material Key updated. Issued to CBRE		EN	DPD	
B	15.04.16	Amendment references added. Material Key updated. Issued to CBRE		DPD	DB	
A	18.12.15	Amendment references added. Issued to CBRE		BM	DPD	
rev.	date	description		dm	aud	
drawing status						
PLANNING						
Diespeker Wharf 38 Graham Street London N1 8JX						
t: 020 7336 7777		w: www.ptea.co.uk		PTEa POLLARD THOMAS EDWARDS architects		
f: 020 7336 0770		e: forename.surname@ptea.co.uk				
project ABBEY AREA REGENERATION-PHASE 1 LONDON		job no. 12_510	drawn LG	audited DPD	scale 1:200@A1	date JUL 13
dwg title GENERAL ARRANGEMENT LANDMARK BUILDING TRUE ELEVATION-SOUTH & WEST		sig. no. 510_1_PL_304		rev. D		



2 NORTH SITE ELEVATION
1:500



GENERAL NOTES

- This drawing is copyright of PTE architects
- Use figured dimensions only. DO NOT SCALE.
- All dimensions are in millimetres unless noted otherwise
- All levels are in metres above ordnance datum unless noted otherwise
- This drawing must be read in conjunction with all other relevant drawings and specifications from the Architect and other consultants

NOTES

- All setting out to be confirmed on site prior to construction - any discrepancy must be immediately reported to the Architect.

MATERIAL KEY

- A** - Brick work type 1: Red Brick, stretcher bond with light colour mortar. Openings to have a deep brick reveal (approx 190mm unless stated otherwise).
- B** - Brick work type 2: Reflective blue/purple Brick, stretcher bond with dark grey mortar. Openings to have a deep brick reveal (approx 190mm unless stated otherwise).
- C** - Brick work type 3: White glazed brick, stack bonded with white colour mortar, to Block F recessed balconies.
- D** - Metal panel: bronze effect panels with hidden fixings and minimal joints.

- E** - Shop front frameless glass curtain walling with 75mm aluminum capping at base, bronze effect aluminum framed double or triple glazed doors to match.

- F** - Windows / doors: PPC aluminum framed double or triple glazed units (manufacturer to be agreed).

- G** - Canopies: Pre-formed metal boxed canopy in bronze metallic finish with hidden structure and integral lighting.

- H** - Perforated metal balustrade or privacy screen: perforated metal (bronze metallic finish) supported off PPC coated frame with hidden fixings and minimal joints - allow for non-uniform setting out of perforations - details to be agreed.

- I** - Metal Railing Balustrade: formed from PPC vertical flats (approx 50 x 12mm).

- J** - Metal Railing Balustrade: formed from PPC vertical flats (approx 50 x 12mm) extending to balcony soffit with metal plate fascia fixed to balcony edge.

- K** - Precast concrete or stone coping to parapet wall - allow for reinforcement back to structure.

- L** - Glass balustrade: frameless glass with no visible fixings.

- M** - Brick work type 4: Green Glazed brickwork, stack bonded to residential entrances

- N** - Hit and miss brickwork wall to basement cycle store - free area to meet ventilation requirements to basement.

- O** - 1.2 m high Fagus sylvatica (beech) instant hedge planted in a double staggered row.

- P** - Reconstituted Stone on fixing ancon bracket to form architrave detail to concierge/supermarket/retail entrances.

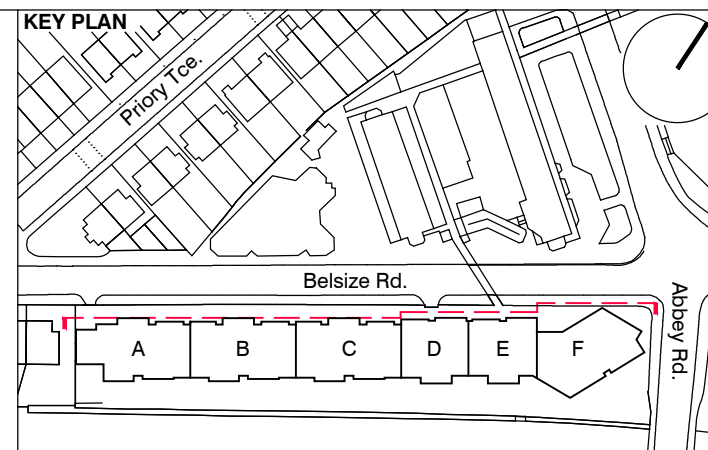
- Q** - Aluminium PPC louvred doors/panels to refuse store/car park ramp/fire exts/substation/vent intake or exhaust locations.

- R** - Brick work type 2: Slightly recessed brick wall with stepped brick coursing.

- S** - Close boarded timber fence to meet Acoustic requirements.

- T** - Brick work type 5: Reduced specification / off-shade brick wall forming retaining structure.

KEY PLAN



SECTION 73 APPLICATION				
F	04.08.16	Amendment 19 added. Issued to planning	DPD	EN
E	21.06.16	Amendment references added. Material Key updated. Issued to CBRE	EN	DPD
D	15.04.16	Amendment references added. Material Key updated. Issued to CBRE	DPD	DB
C	18.12.15	Amendment references added. Issued to CBRE	BM	DPD
B	04.10.13	Issue for information	BM	DPD
A	02.09.13	Drawing amended and issued to design team for comment.	RL	DPD
rev.	date	description	dm	aud

PLANNING

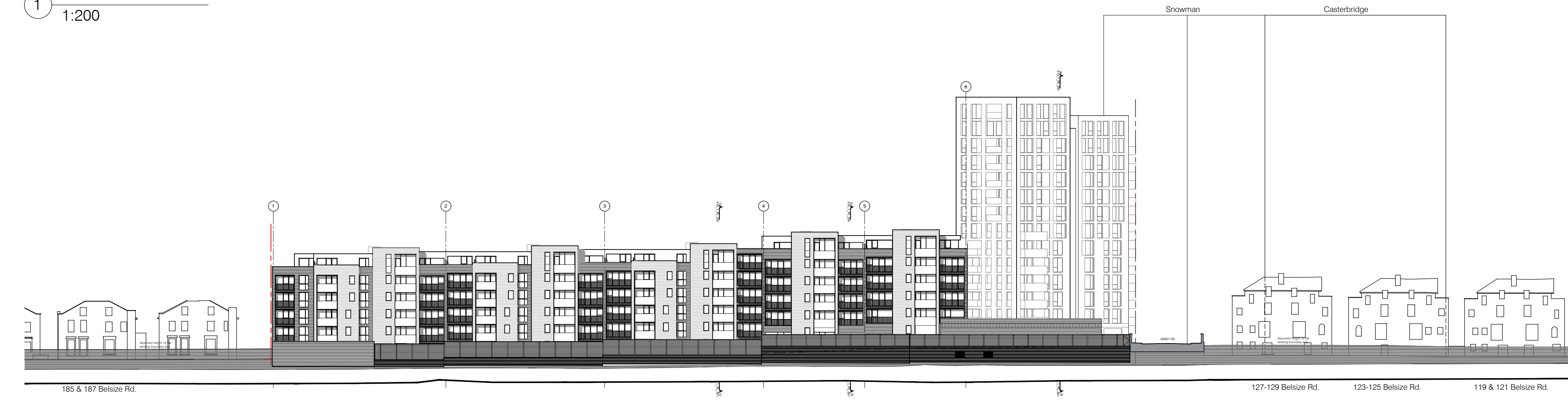
project
Despcker Wharf
38 Graham Street
London N1 6JX
t: 020 7336 7777
f: 020 7336 0770
w: www.ptea.co.uk
e: forename.surname@ptea.co.uk

PTEa
POLLARD THOMAS EDWARDS architects

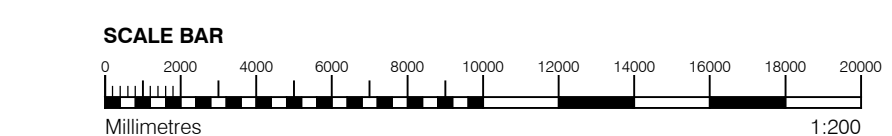
project ABBEY AREA REGENERATION-PHASE 1 LONDON	job.no. 12_510	drawn LG	audited DPD	scale 1:200@A1	date JUL 13
sheet title GENERAL ARRANGEMENT NORTH & NORTH SITE ELEVATION through voids	sig. no. 510_1_PL_305	rev. F			



1 SOUTH ELEVATION
1:200



2 SOUTH SITE ELEVATION
1:500



GENERAL NOTES

- This drawing is copyright of PTE architects
- Use figured dimensions only. DO NOT SCALE.
- All dimensions are in millimetres unless noted otherwise
- All levels are in metres above ordnance datum unless noted otherwise
- This drawing must be read in conjunction with all other relevant drawings and specifications from the Architect and other consultants

NOTES

- All setting out to be confirmed on site prior to construction - any discrepancy must be immediately reported to the Architect.

MATERIAL KEY

A - Brick work type 1: Red Brick, stretcher bond with light colour mortar. Openings to have a deep brick reveal (approx 190mm unless stated otherwise).

B - Brick work type 2: Reflective blue/purple Brick, stretcher bond with dark grey mortar. Openings to have a deep brick reveal (approx 190mm unless stated otherwise).

C - Brick work type 3: White glazed brick, stack bonded with white colour mortar, to Block F recessed balconies.

D - Metal panel: bronze effect panels with hidden fixings and minimal joints.

E - Shop front frameless glass curtain walling with 75mm aluminum capping at base, bronze effect aluminum framed double or triple glazed doors to match.

F - Windows / doors: PPC aluminum framed double or triple glazed units (manufacturer to be agreed).

G - Canopies: Pre-formed metal boxed canopy in bronze metallic finish with hidden structure and integral lighting.

H - Perforated metal balustrade or privacy screen: perforated metal (bronze metallic finish) supported off PPC coated frame with hidden fixings and minimal joints - allow for non-uniform setting out of perforations - details to be agreed.

I - Metal Railing Balustrade: formed from PPC vertical flats (approx 50 x 12mm).

J - Metal Railing Balustrade: formed from PPC vertical flats (approx 50 x 12mm) extending to balcony soffit with metal plate fascia fixed to balcony edge.

K - Precast concrete or stone coping to parapet wall - allow for reinforcement back to structure.

L - Glass balustrade: frameless glass with no visible fixings.

M - Brick work type 4: Green Glazed brickwork, stack bonded to residential entrances

N - Hit and miss brickwork wall to basement cycle store - free area to meet ventilation requirements to basement.

O - 1.2 m high Fagus sylvatica (beech) instant hedge planted in a double staggered row.

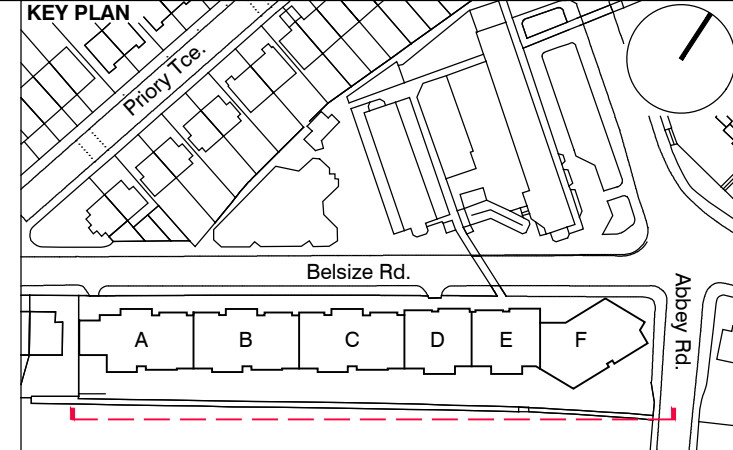
P - Reconstituted Stone on fixing ancon bracket to form architrave detail to concierge/supermarket/retail entrances.

Q - Aluminium PPC louvred doors/panels to refuse store/car park ramp/fire exits/substation/vent intake or exhaust locations.

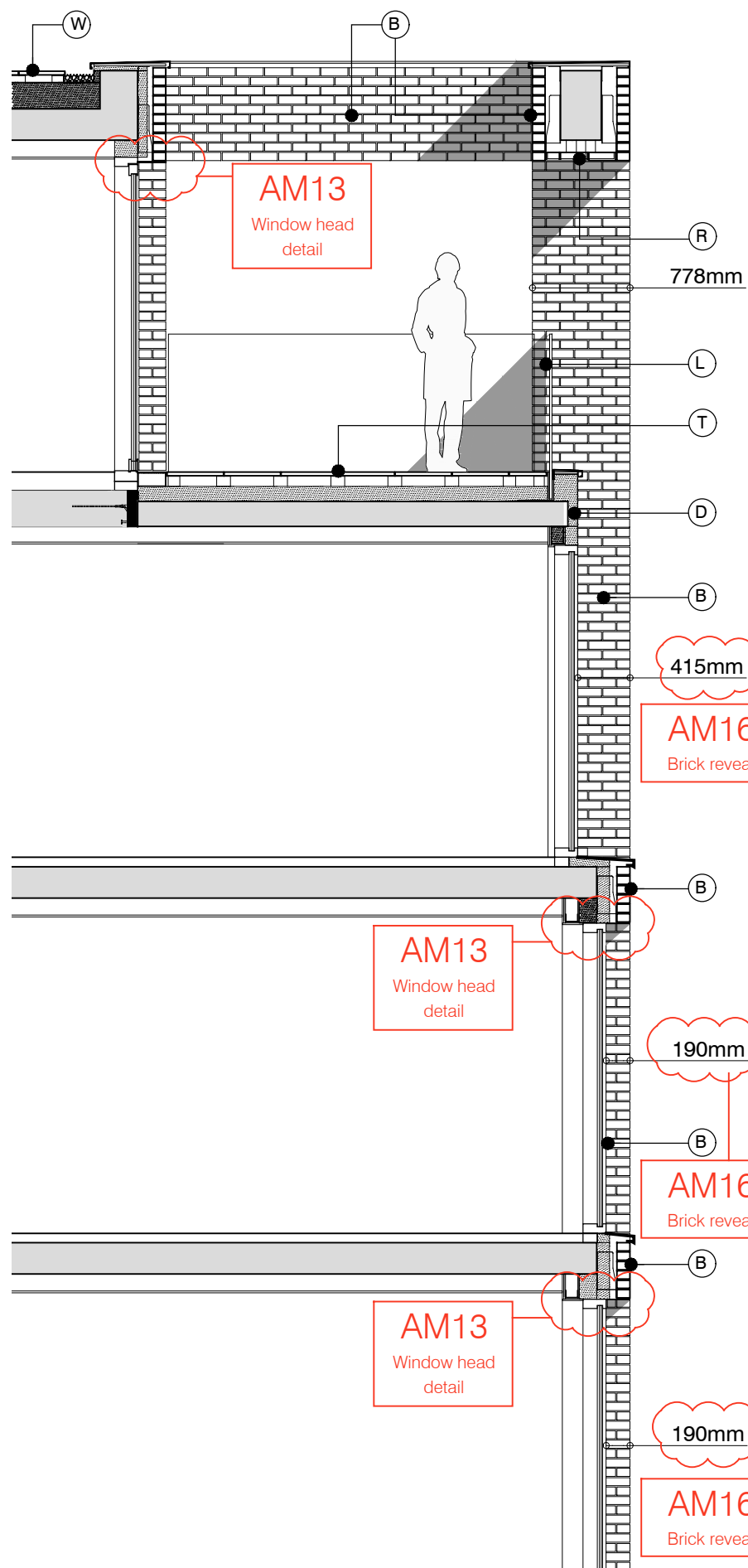
R - Brick work type 2: Slightly recessed brick wall with stepped brick coursing.

S - Close boarded timber fence to meet Acoustic requirements.

T - Brick work type 5: Reduced specification / off-shade brick wall forming retaining structure.

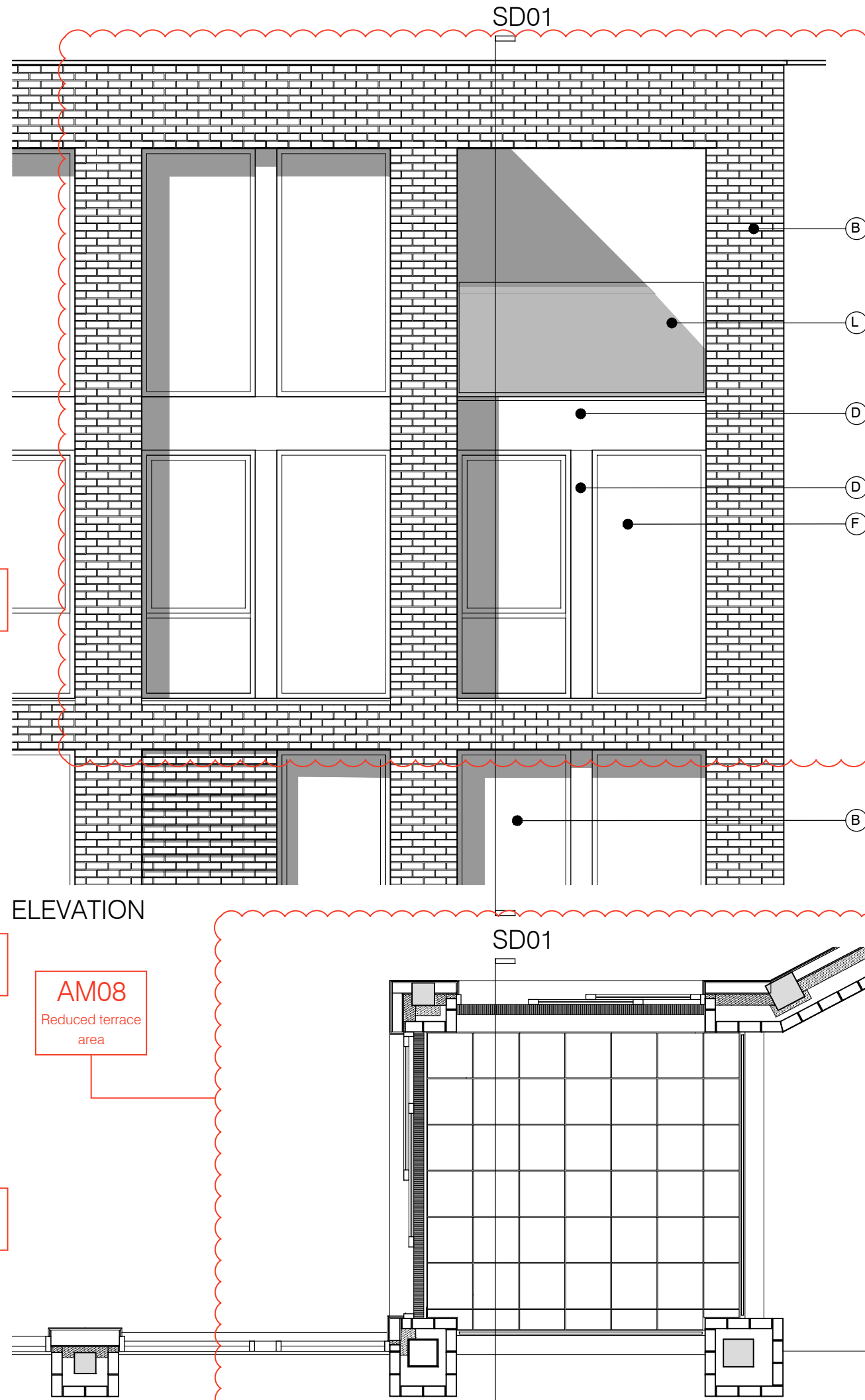


SECTION 73 APPLICATION						
C	21.06.16	Amendment references added. Material Key updated. Issued to planning	EN	DPD		
B	15.04.16	Amendment references added. Material Key updated. Issued to CBRE	DPD	DB		
A	18.12.15	Amendment references added. Issued to CBRE	BM	DPD		
rev.	date	description	dm	aut		
drawing status					PLANNING	
Diespeker Wharf 38 Graham Street London N1 8JX			PTEa POLLARD THOMAS EDWARDS architects			
t: 020 7336 7777 f: 020 7336 0770			w: www.ptea.co.uk e: forename.surname@ptea.co.uk			
project ABBEY AREA REGENERATION-PHASE 1 LONDON			job no. 12_510	drawn LG	audited DPD	scale 1:200@A1
dwg title GENERAL ARRANGEMENT SOUTH & SOUTH SITE ELEVATIONS inc boundary			dwg no. 510_1_PL_306	date JUL 13	rev C	



SECTION DETAIL 01

TERRACE PLAN



MATERIAL KEY

B - Brick work type 2: stretcher bond brickwork. Openings to have a deep brick reveal (approx 190mm unless stated otherwise).

D - Metal panel: bronze effect panels with hidden fixings and minimal joints.

F - Windows / doors: bronze effect aluminum framed double or triple glazed units (manufacturer to be agreed).

L - Glass balustrade: frameless glass with no visible fixings.

R - Brick Soffit on fixing ancon bracket : Brick type to match facing brick

T - Terrace: with 50mm thick stone pavers (pietra serena sandstone or similar)

W - Roofs: Insulated flat roof with precast concrete pavers to Block F

Y - Brick work type 2: Slightly recessed brick wall with stepped brick coursing

For specification , refer to Condition 26 parts (a) + (b) decision notice dated 22 October 2015, ref: 2015/3878/p

AM08
Reduced terrace area

0 500 1000 1500 2000 2500 3000 3500 4000 4500 5000
Millimetres 1:50

Key location changed

S73 APPLICATION

rev.	date	notes	dm	aud
C	21.06.16	Amendment references added. Material Key updated. Issued to Planners EN DPD		
B	15.04.16	Amendment references added. Material Key updated. Issued to CBRE BM DPD		
A	18.12.15	Amendment references added. Issued to CBRE BM DPD		

drawing status

PLANNING

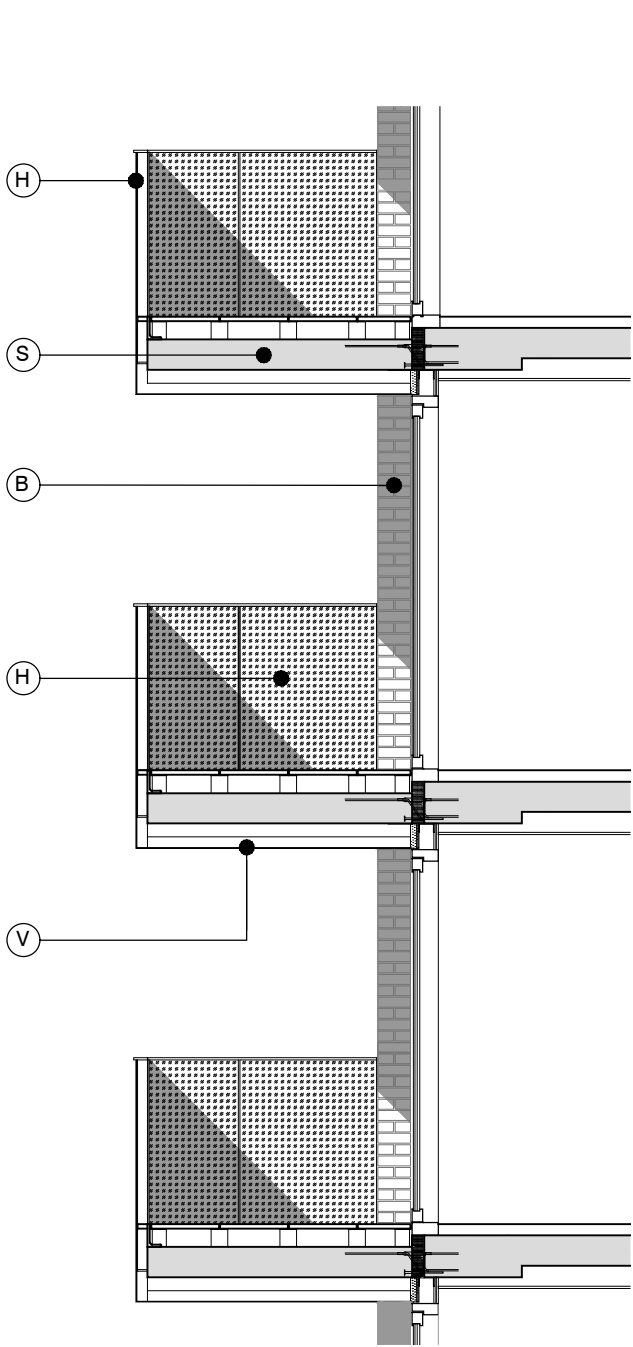
Diespeker Wharf
38 Graham Street
London N1 8JX

t: 020 7336 7777 w: www.ptea.co.uk
f: 020 7336 0770 e: forename.surname@ptea.co.uk

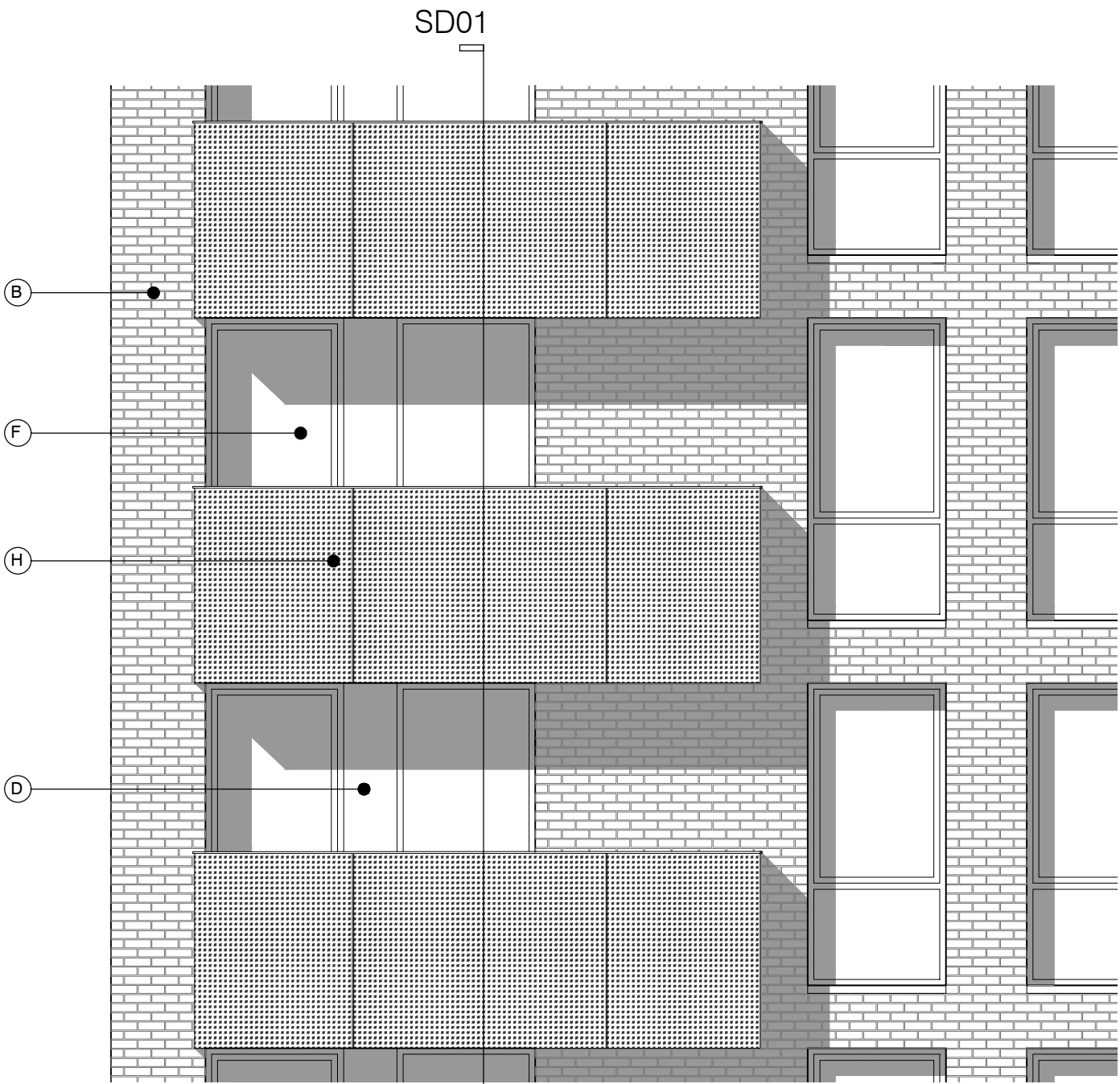
PTEa
POLLARD THOMAS EDWARDS architects

project	job no.	drawn	audited	scale	date
ABBEY AREA REGENERATION-PHASE 1 LONDON	12_510	EG	DPD	1:50@A1	JUL 13

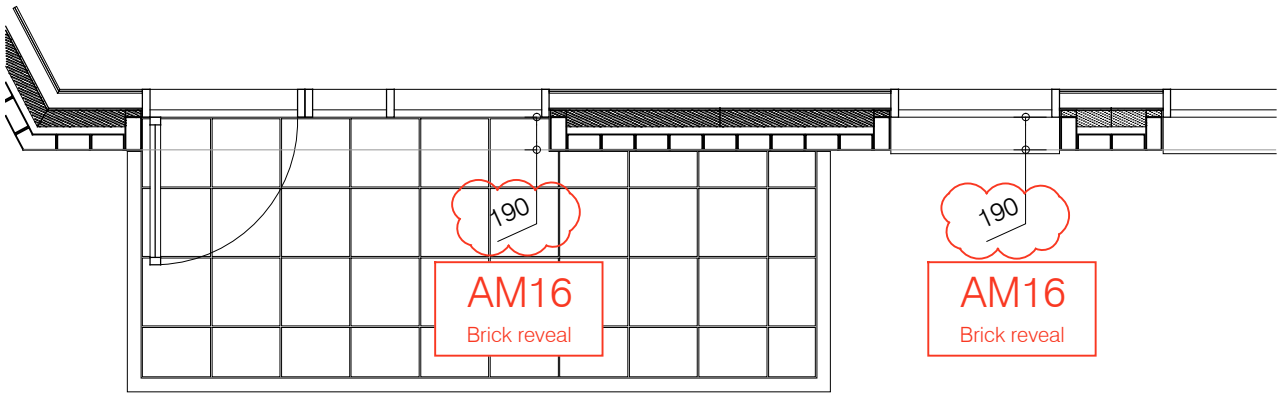
dwg title	dwg no.	rev
TOP FLOOR TERRACE DETAILS	510_1_PL_401	C



SECTION DETAIL 01



ELEVATION



PLAN

MATERIAL KEY

B - Brick work type 2: TYPE TO BE AGREED but darker than Type 1, stretcher bond brickwork with Cemex London White mortar or similar. Allow for darker mortar to recessed brick walls. Openings to have a deep brick reveal (approx 190mm unless stated otherwise).

D - Metal panel: bronze effect panels with hidden fixings and minimal joints.

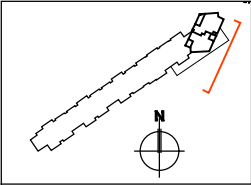
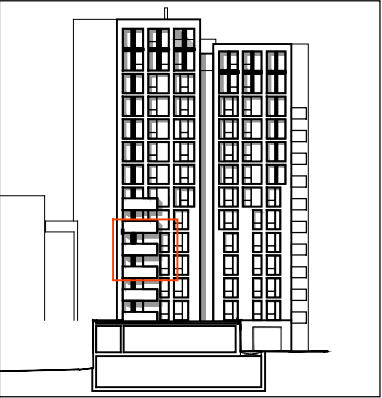
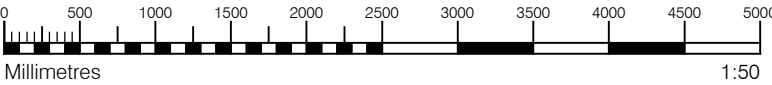
F - Windows / doors: bronze effect aluminum framed double or triple glazed units (manufacturer to be agreed).

H - Perforated metal balustrade or privacy screen: perforated metal (bronze metallic finish) supported off PPC coated frame with hidden fixings and minimal joints - allow for non-uniform setting out of perforations - details to be agreed

S - Balcony: Thermally broken in-situ cast concrete cantilevered balcony structure with 50mm thick stone pavers (pietra serena sandstone or similar)

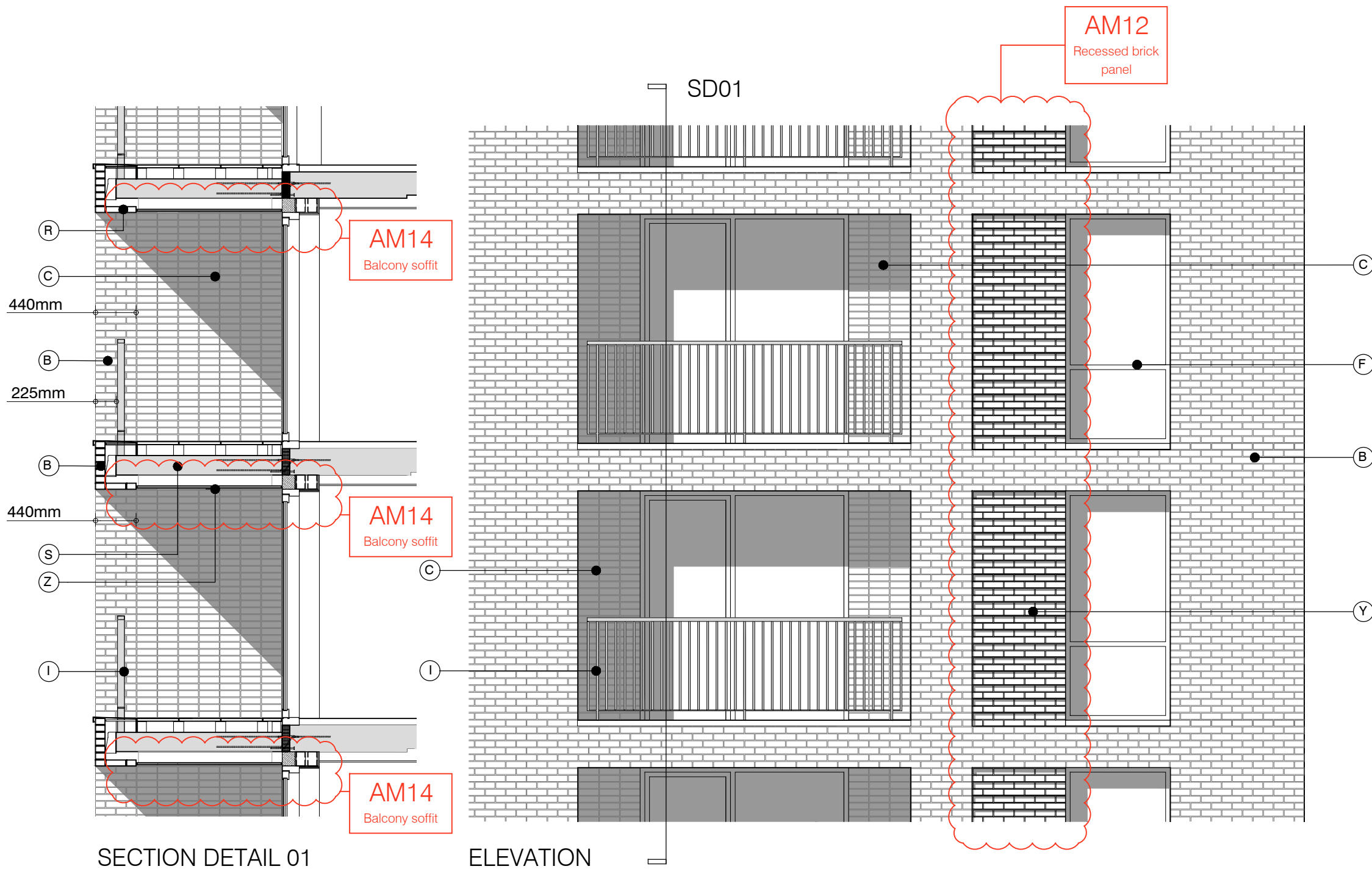
V - Metal balcony soffit (bronze metallic finish) with hidden fixings and minimal joints supported off PPC coated frame

For specification , refer to Condition 26 parts (a) + (b) decision notice dated 22 October 2015, ref: 2015/3878/p



S73 APPLICATION

B	21.06.16	Amendment references added; material key updated. Issued to planning.			EN	DPD								
A	15.04.16	Amendment references added. Issued to CBRE			BM	DPD								
rev.	date	notes			dm	aud								
drawing status														
PLANNING														
<div><div><div>Diespeker Wharf 38 Graham Street London N1 8JX</div><div>t: 020 7336 7777 f: 020 7336 0770</div></div><div><div>w: www.ptea.co.uk e: forename.surname@ptea.co.uk</div><div><div>PTEa</div><div>POLLARD THOMAS EDWARDS architects</div></div></div></div>														
project	ABBEY AREA REGENERATION-PHASE 1 LONDON			job.no.	12_510	<table><tr><td>drawn</td><td>EG</td><td>audited</td><td>DPD</td><td>scale</td><td>1:50@A1</td><td>date</td><td>JUL 13</td></tr></table>	drawn	EG	audited	DPD	scale	1:50@A1	date	JUL 13
drawn	EG	audited	DPD	scale	1:50@A1	date	JUL 13							
dwg title PROJECTING BALCONY DETAILS				dwg.no. 510_1_PL_402		rev B								



MATERIAL KEY

B - Brick work type 2: TYPE TO BE AGREED but darker than Type 1, stretcher bond brickwork with Cemex London White mortar or similar. Allow for darker mortar to recessed brick walls. Openings to have a deep brick reveal (approx 190mm unless stated otherwise).

C - Glazed brickwork: TYPE TO BE AGREED, stack bonded, to Block F recessed balconies. Soffits to be brick slips (same brick specification as recessed walls), also stack bonded.

E - Shop front frameless glass curtain walling with 75mm aluminum capping at base, bronze effect aluminum framed double or triple glazed doors to match.

F - Windows / doors: bronze effect aluminum framed double or triple glazed units (manufacturer to be agreed).

I - Metal Railing Balustrade: formed from PPC vertical flats (approx 65 x 8mm)

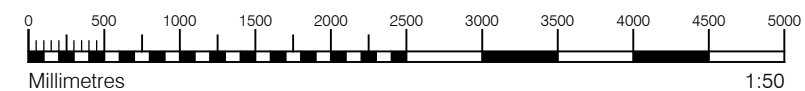
S - Balcony: Thermally broken in-situ cast concrete cantilevered balcony structure with 50mm thick stone pavers (pietra serena sandstone or similar)

R - Brick Soffit on fixing ancon bracket : Brick type to match facing brick

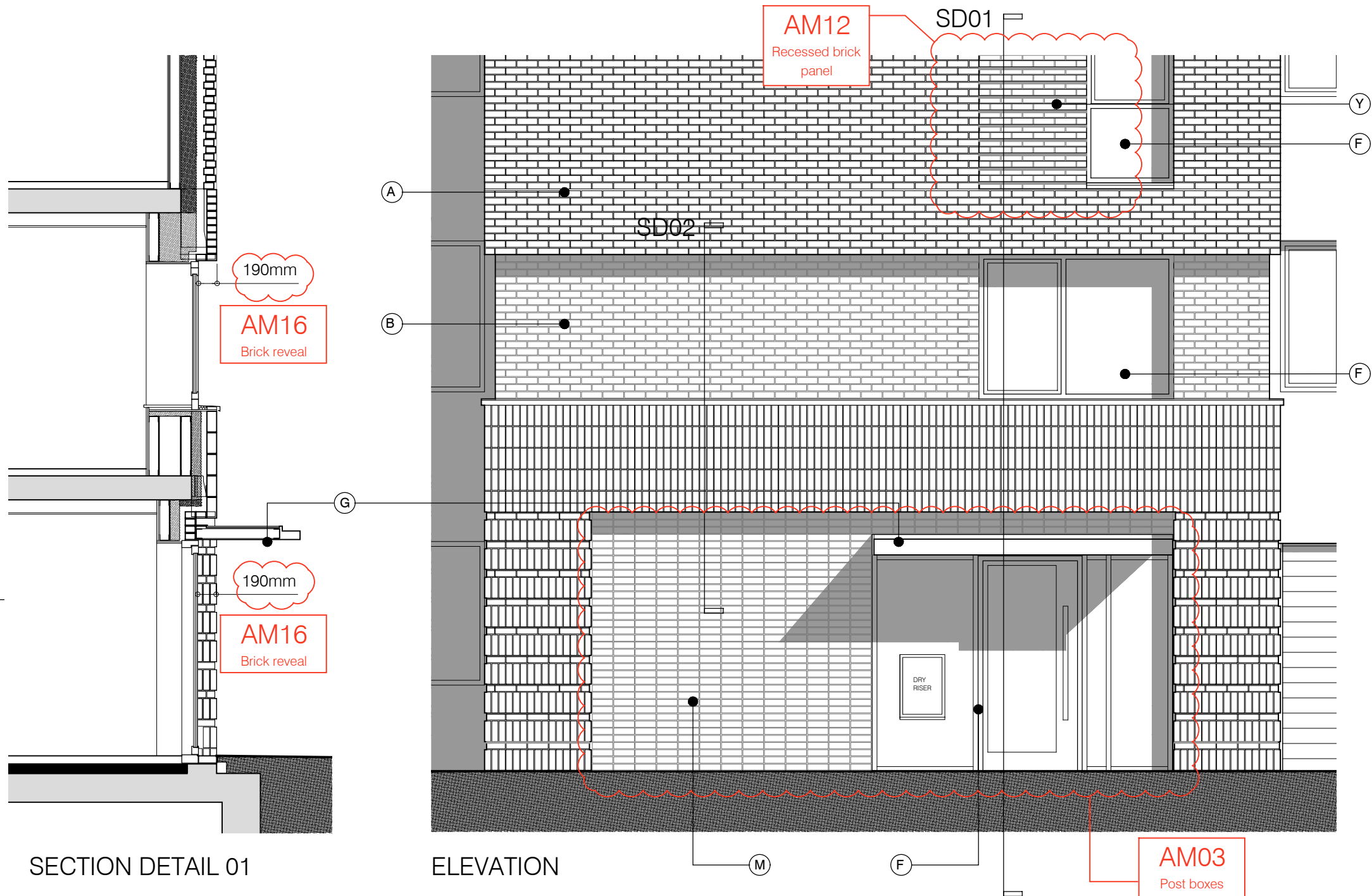
Y - Brick work type 2: Slightly recessed brick wall with stepped brick coursing

Z - Render / soffit panel to underside of balcony

For specification , refer to Condition 26 parts (a) + (b) decision notice dated 22 October 2015, ref: 2015/3878/p



S73 APPLICATION												
B	21.06.16	Amendment references added. Material Key Updated. Issued to Planning							EN	DPD		
A	15.04.16	Amendment references added. Material Key Updated. Issued to CBRE							BM	DPD		
rev.	date	notes							drn	aud		
drawing status												
PLANNING												
Diespeker Wharf 38 Graham Street London N1 8JX						<div>PTEa</div> <div>POLLARD THOMAS EDWARDS architects</div>						
t:	020 7336 7777	w:	www.ptea.co.uk									
f:	020 7336 0770	e:	forename.surname@ptea.co.uk									
project	ABBEY AREA REGENERATION-PHASE 1 LONDON		job.no.	12_510	drawn	EG	audited	DPD	scale	1:50@A1	date	JUL 13
dwg title	INSET BALCONY DETAIL				drg. no.	510_1_PL_403				rev	B	



MATERIAL KEY

A - Brick work type 1: stretcher bond brickwork. Openings to have a deep brick reveal (approx 190mm unless stated otherwise).

B - Brick work type 2: stretcher bond brickwork. Allow for darker mortar to recessed brick walls. Openings to have a deep brick reveal (approx 190mm unless stated otherwise).

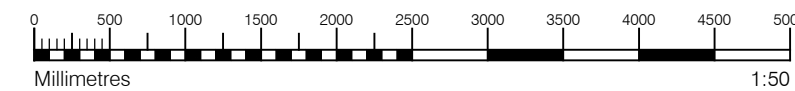
F - Windows / doors: bronze effect aluminum framed double or triple glazed units (manufacturer to be agreed).

G - Canopies: Pre-formed metal boxed canopy in bronze metallic finish with hidden structure and integral lighting.

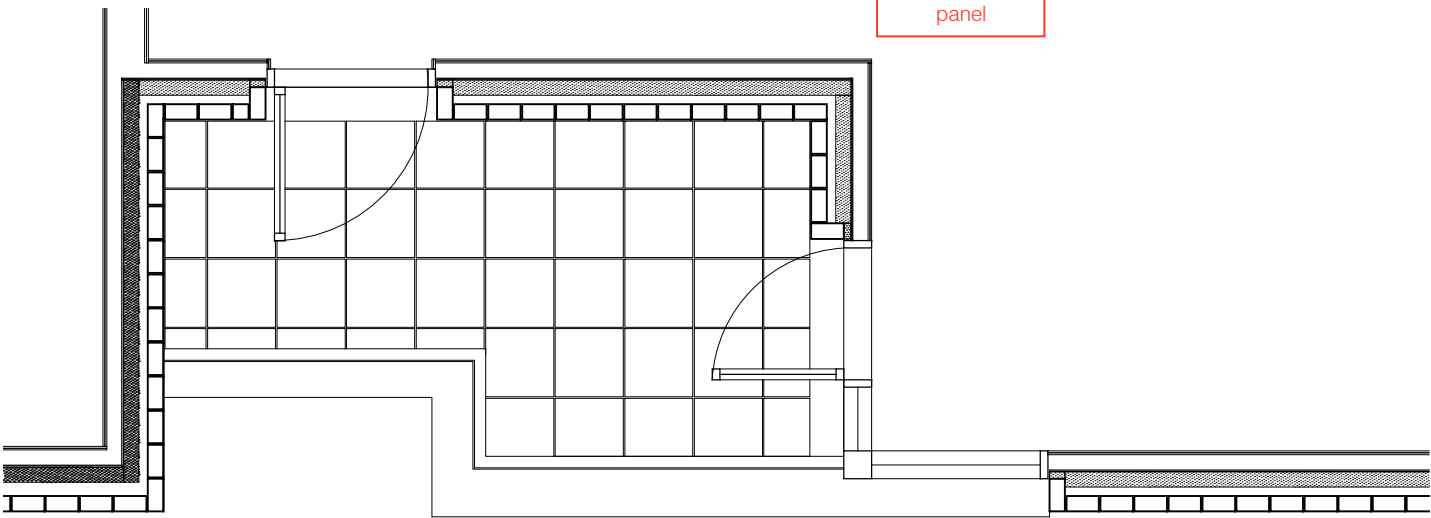
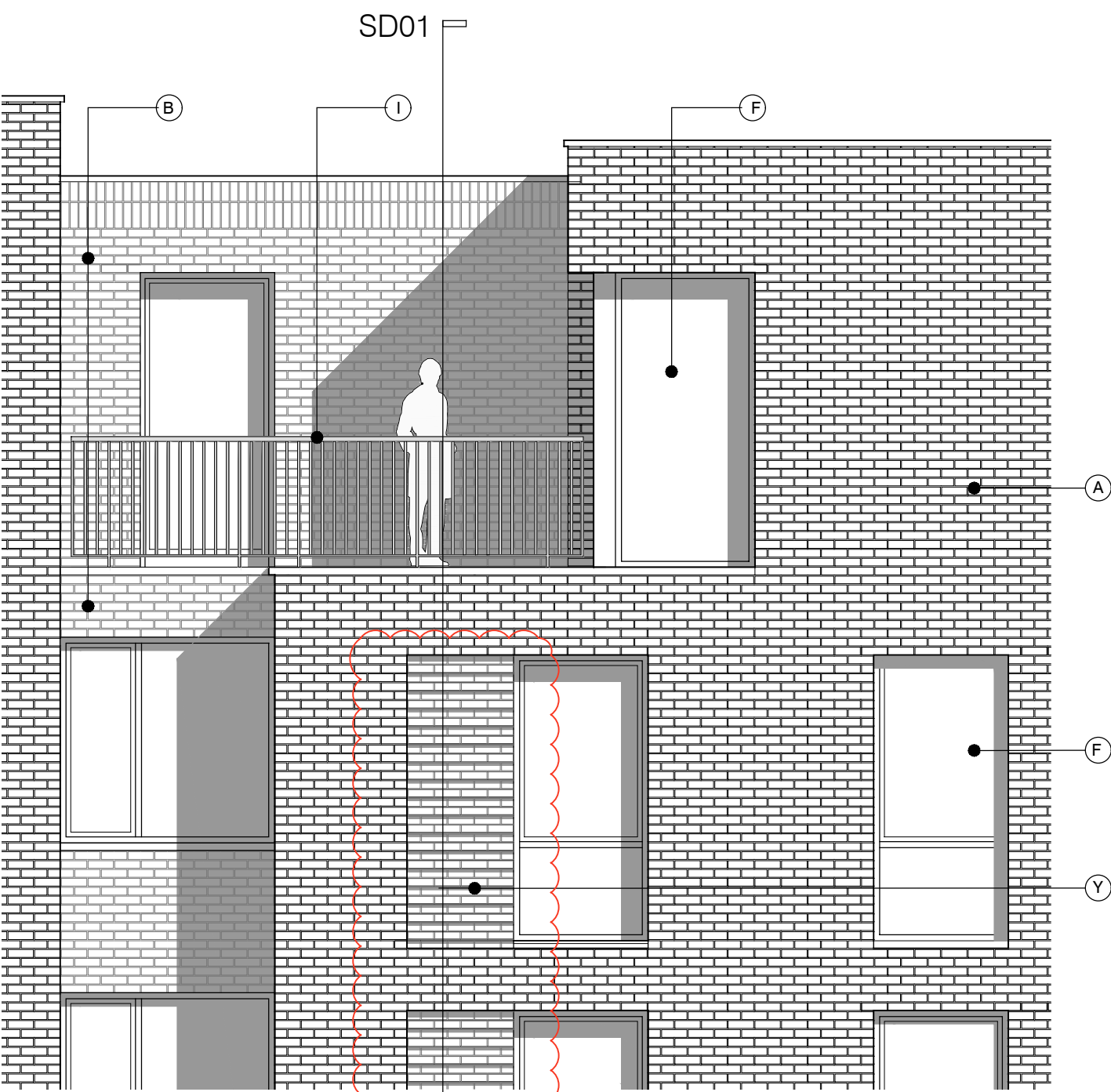
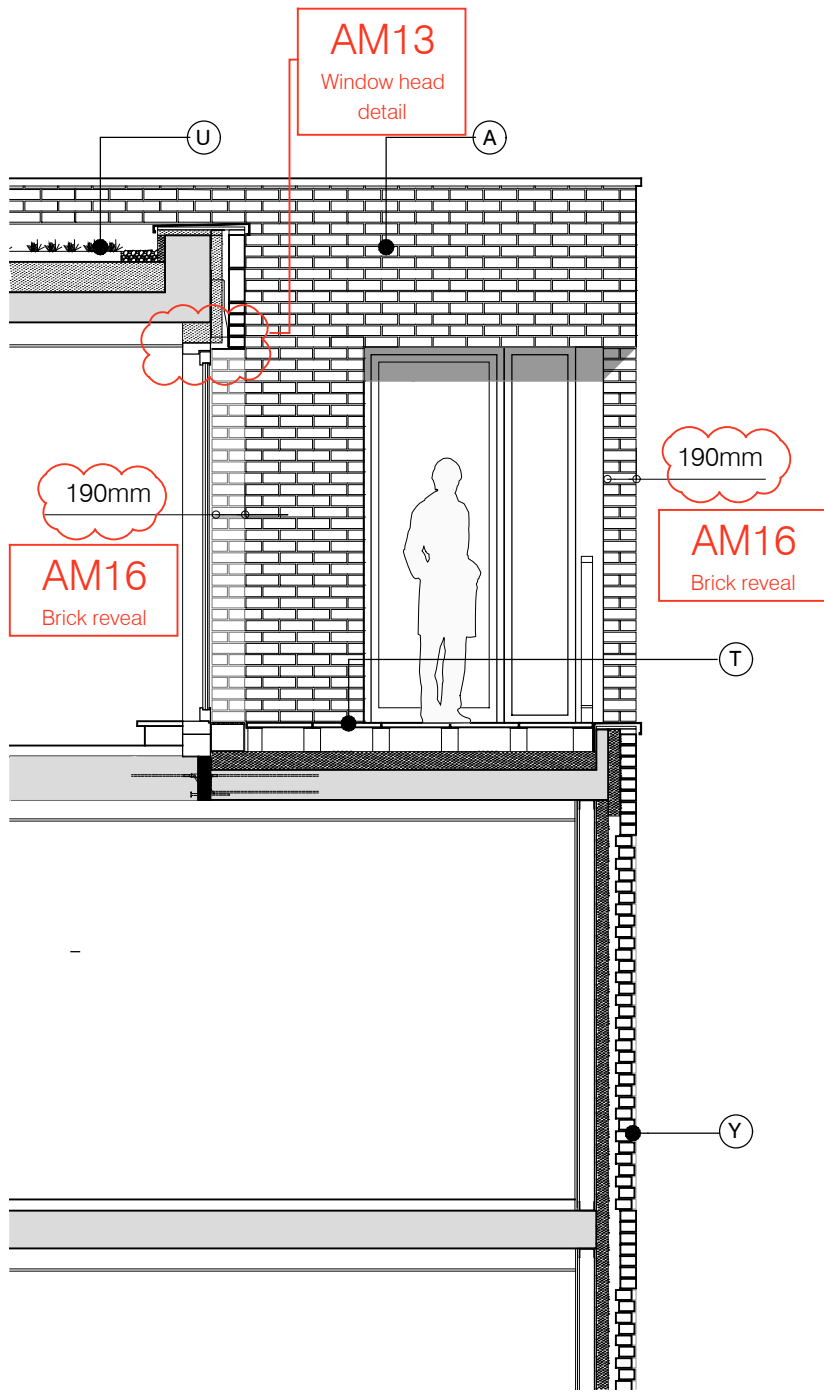
M - Residential Entrances: Glazed brickwork - Green stack bonded.

Y - Brick work type 2: Slightly recessed brick wall with stepped brick coursing

For specification , refer to Condition 26 parts (a) + (b) decision notice dated 22 October 2015, ref: 2015/3878/p



S73 APPLICATION					
C	21.06.15	Amendment references added. Material Key updated. Issued to planning	EN	DPD	
B	15.04.16	Amendment references added. Material Key updated. Issued to CBRE	BM	DPD	
A	18.12.15	Amendment references added. Issued to CBRE	BM	DPD	
rev.	date	notes	dm	aud	
drawing status					
PLANNING					
Diespiker Wharf 38 Graham Street London N1 8JX			PTEa POLLARD THOMAS EDWARDS architects		
t: 020 7336 7777 f: 020 7336 0770		w: www.ptea.co.uk e: forename.surname@ptea.co.uk			
project ABBEY AREA REGENERATION-PHASE 1 LONDON	job no. 12_510	drawn EG	audited DPD	scale 1:50@A1	date JUL 13
dwg title FRONT ENTRANCE - BLOCK C			dwg no. 510_1_PL_404	rev C	



MATERIAL KEY

A - Brick work type 1: TYPE TO BE AGREED, stretcher bond brickwork with Cemex London White mortar or similar. Openings to have a deep brick reveal (approx 190mm unless stated otherwise).

B - Brick work type 2: TYPE TO BE AGREED but darker than Type 1, stretcher bond brickwork with Cemex London White mortar or similar. Allow for darker mortar to recessed brick walls. Openings to have a deep brick reveal (approx 190mm unless stated otherwise).

F - Windows / doors: bronze effect aluminum framed double or triple glazed units (manufacturer to be agreed).

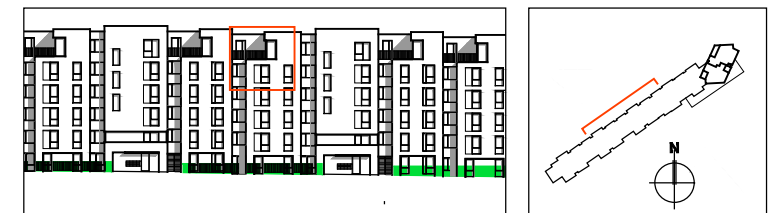
I - Metal Railing Balustrade: formed from PPC vertical flats (approx 65 x 8mm)

T - Terrace: with 50mm thick stone pavers (pietra serena sandstone or similar)

U - Roofs: Insulated extensive green biodiverse roof with parapet wall

Y - Brick work type 2: Slightly recessed brick wall with stepped brick coursing

For specification , refer to Condition 26 parts (a) + (b) decision notice dated 22 October 2015, ref: 2015/3878/p



S73 APPLICATION

B	21.06.16	Amendment references added. Material Key Updated. Issued to Planning	EN	DPD
A	15.04.16	Amendment references added. Material Key Updated. Issued to CBRE	BM	DPD
rev.	date	notes	dm	aud

PLANNING

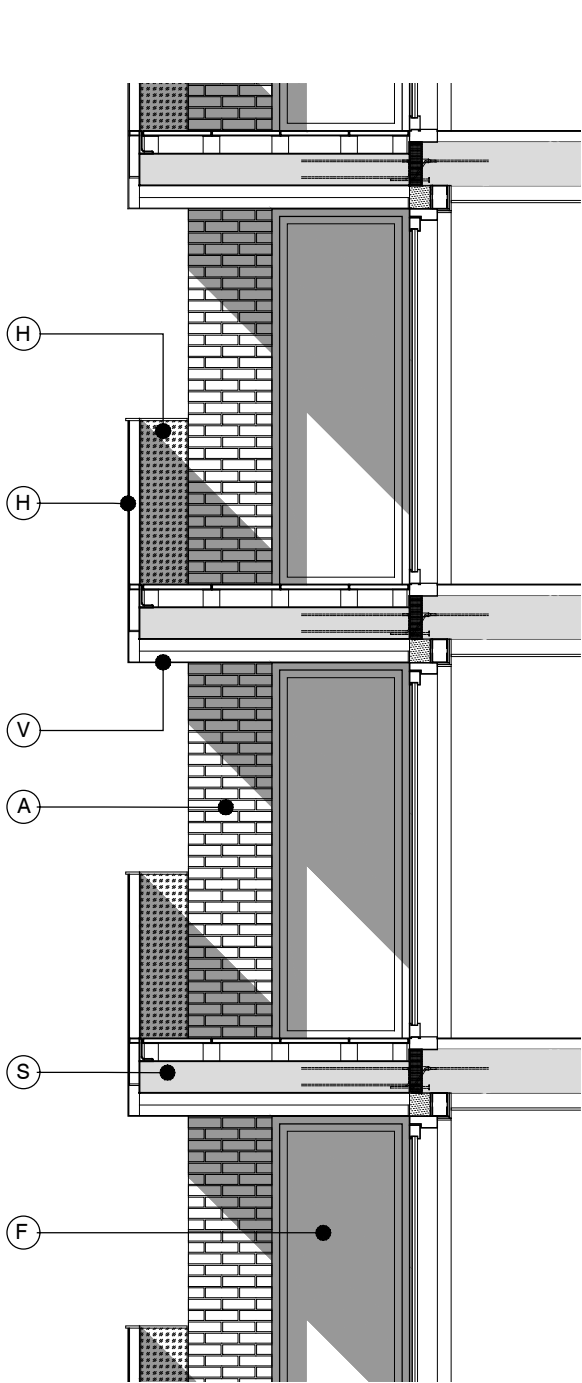
Diespeker Wharf
38 Graham Street
London N1 8JX

t: 020 7336 7777
f: 020 7336 0770

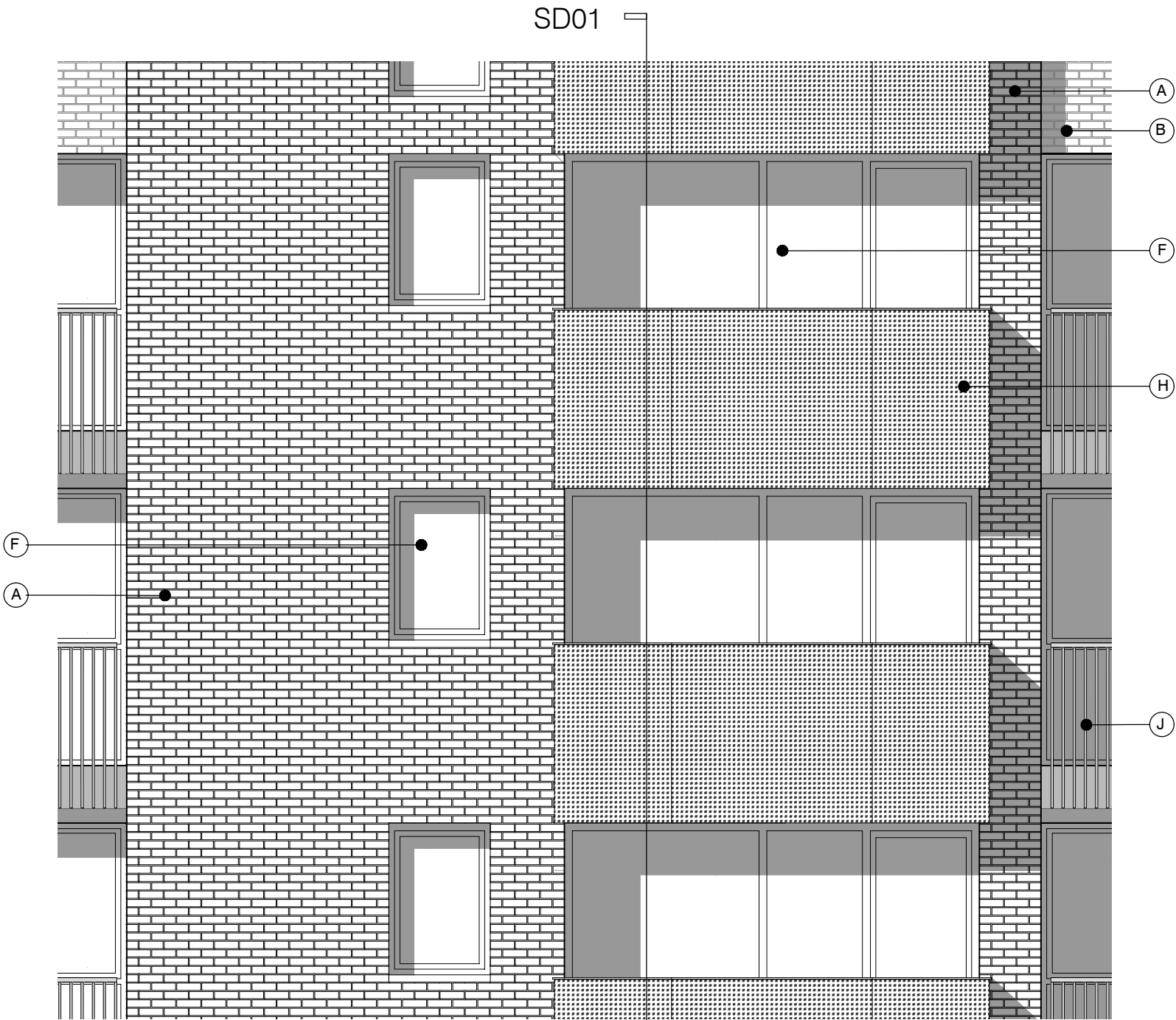
w: www.ptea.co.uk
e: forename.surname@ptea.co.uk

PTEa
POLLARD THOMAS EDWARDS architects

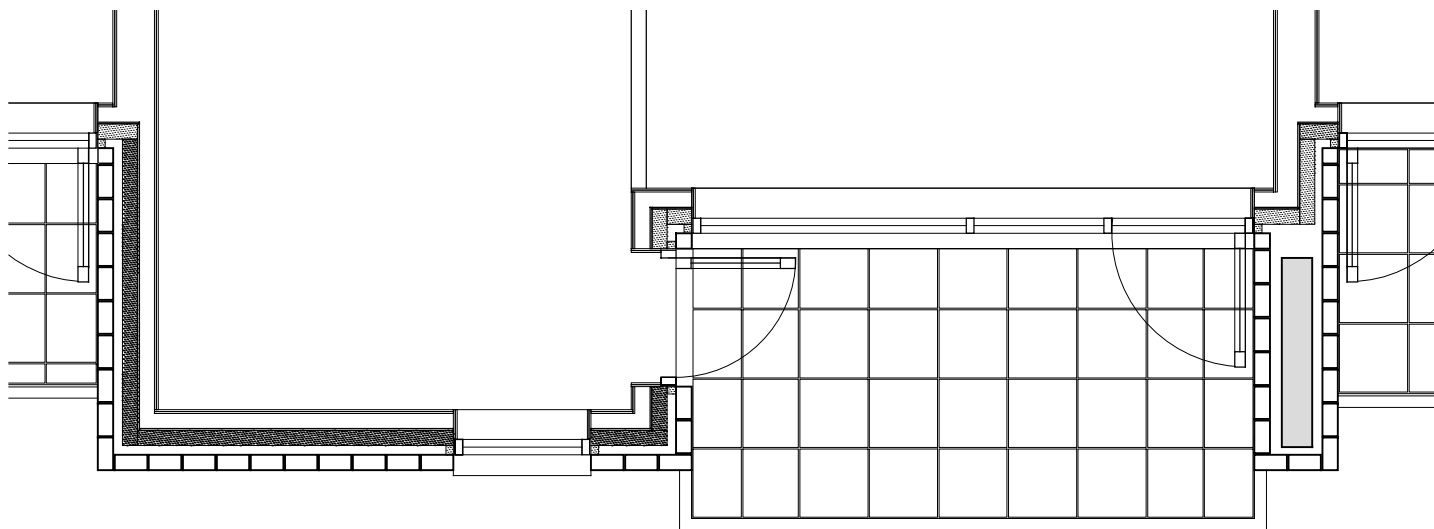
project	ABBEY AREA REGENERATION-PHASE 1 LONDON	job no.	12_510	drawn	EG	audited	DPD	scale	1:50@A1	date	JUL 13
dwg title	5TH FLOOR TERRACE - BLOCK B	dwg no.	510_1_PL_405	rev	B						



SECTION DETAIL 01



ELEVATION



PLAN

MATERIAL KEY

A - Brick work type 1: TYPE TO BE AGREED, stretcher bond brickwork with Cemex London White mortar or similar. Openings to have a deep brick reveal (approx 190mm unless stated otherwise).

B - Brick work type 2: TYPE TO BE AGREED but darker than Type 1, stretcher bond brickwork with Cemex London White mortar or similar. Allow for darker mortar to recessed brick walls. Openings to have a deep brick reveal (approx 190mm unless stated otherwise).

F - Windows / doors: bronze effect aluminum framed double or triple glazed units (manufacturer to be agreed).

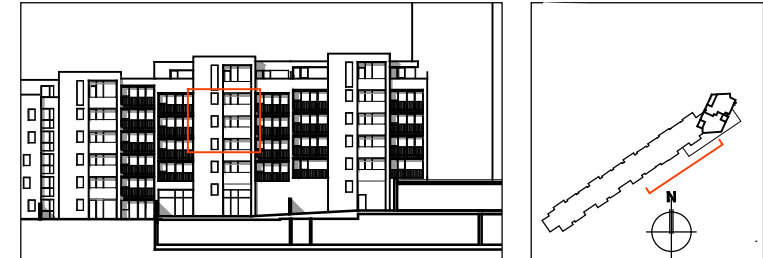
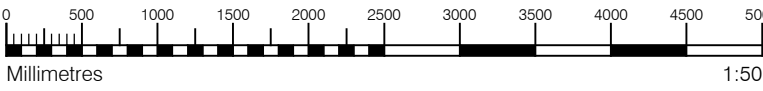
H - Perforated metal balustrade or privacy screen: perforated metal (bronze metallic finish) supported off PPC coated frame with hidden fixings and minimal joints - allow for non-uniform setting out of perforations - details to be agreed

J - Metal Railing Balustrade: formed from PPC vertical flats (approx 65 x 8mm) extending to balcony soffit with metal plate facia fixed to balcony edge

S - Balcony: Thermally broken in-situ cast concrete cantilevered balcony structure with 50mm thick stone pavers (pietra serena sandstone or similar)

V - Metal balcony soffit (bronze metallic finish) with hidden fixings and minimal joints supported off PPC coated frame

For specification , refer to Condition 26 parts (a) + (b) decision notice dated 22 October 2015, ref: 2015/3878/p



S73 APPLICATION

B	21.06.16	Material Key Updated. Issued to Planning					EN	DPD					
A	15.04.16	Amendment references added. Material Key Updated. Issued to CBRE					BM	DPD					
rev.	date	notes					drn	aud					
drawing status													
PLANNING													
Diespeker Wharf 38 Graham Street London N1 8JX													
t: 020 7336 7777		w: www.ptea.co.uk		<div>PTEa</div> <div>POLLARD THOMAS EDWARDS architects</div>									
f: 020 7336 0770		e: forename.surname@ptea.co.uk											
project	ABBEY AREA REGENERATION-PHASE 1 LONDON			job.no.	12_510	drawn	EG	audited	DPD	scale	1:50@A1	date	JUL 13
dwg title	PARTIALLY INSET BALCONIES - SOUTH ELEVATION				dig. no.	510_1_PL_406				rev	B		