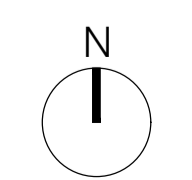
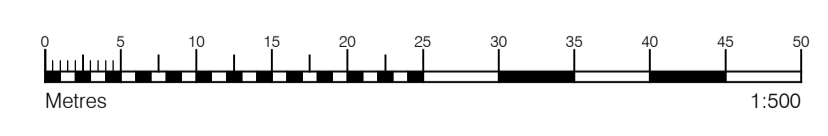


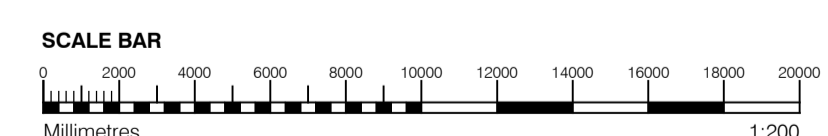
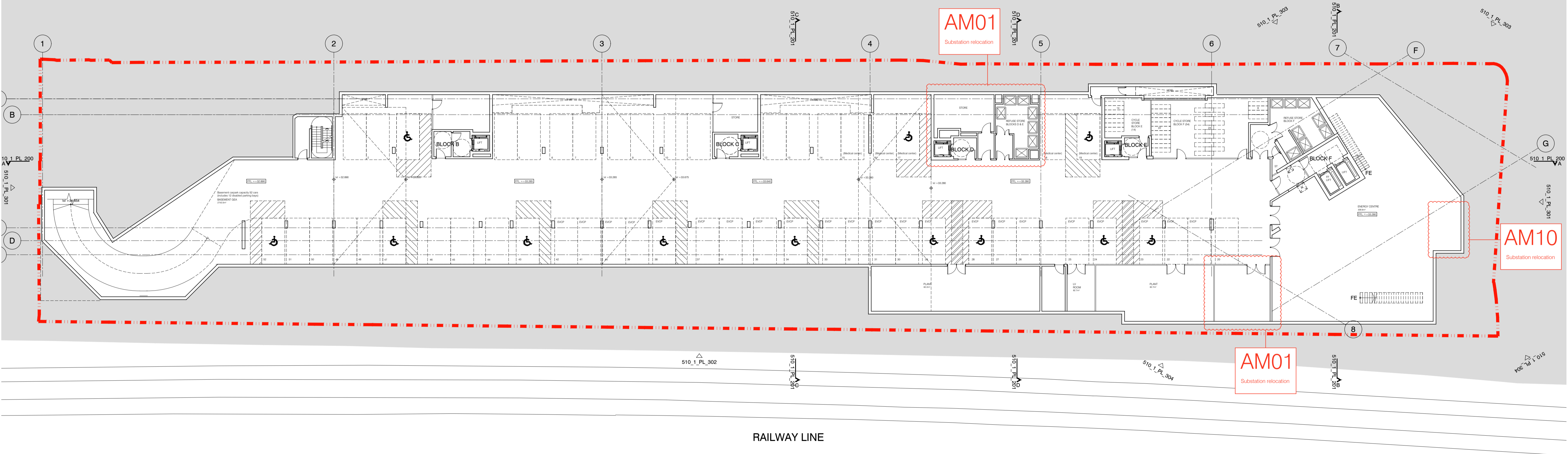
AM01
Substation/
Comm. unit size

AM11
Boundary wall



S73 APPLICATION						
E	21.06.16	Amendment references added. Issued to planning	EN	DPD		
D	15.04.16	Amendment references added. Issued to CBRE	DPD	DB		
C	17.12.15	Amendment references added. Issued to CBRE	PJ	DPD		
B	04.10.13	Concierge amendments, FE & levels	BM	DPD		
A	30.08.13	Drawing amended and issued to design team for comment.	FL	DPD		
rev.	date	description	dm	aud		

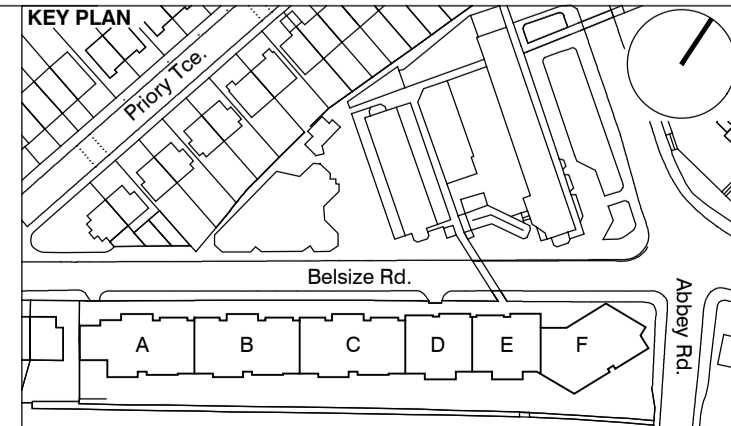
PLANNING						
Dispeker Wharf 38 Graham Street London N1 8JX						
PTEa						
POLLARD THOMAS EDWARDS architects						
project	ABBEY AREA REGENERATION - PHASE 1	job no.	12_510	drawn	BM	audtd
drawn	DPD	scale	1:500 @ A1	date	JUL 13	
drawn site	GENERAL ARRANGEMENT	drawn no.	510_1_PL_001	date		
drawn site	SITE PLAN	drawn no.		date		



- GENERAL NOTES**
- This drawing is copyright of PTE architects
 - Use figured dimensions only. DO NOT SCALE.
 - All dimensions are in millimetres unless noted otherwise
 - All levels are in metres above ordnance datum unless noted otherwise
 - This drawing must be read in conjunction with all other relevant drawings and specifications from the Architect and other consultants
- NOTES**
- All setting out to be confirmed on site prior to construction - any discrepancy must be immediately reported to the Architect.

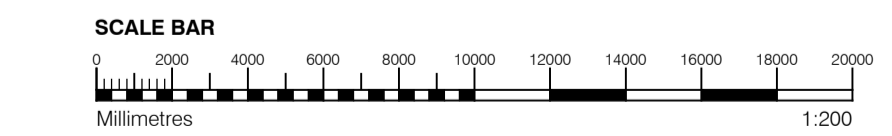
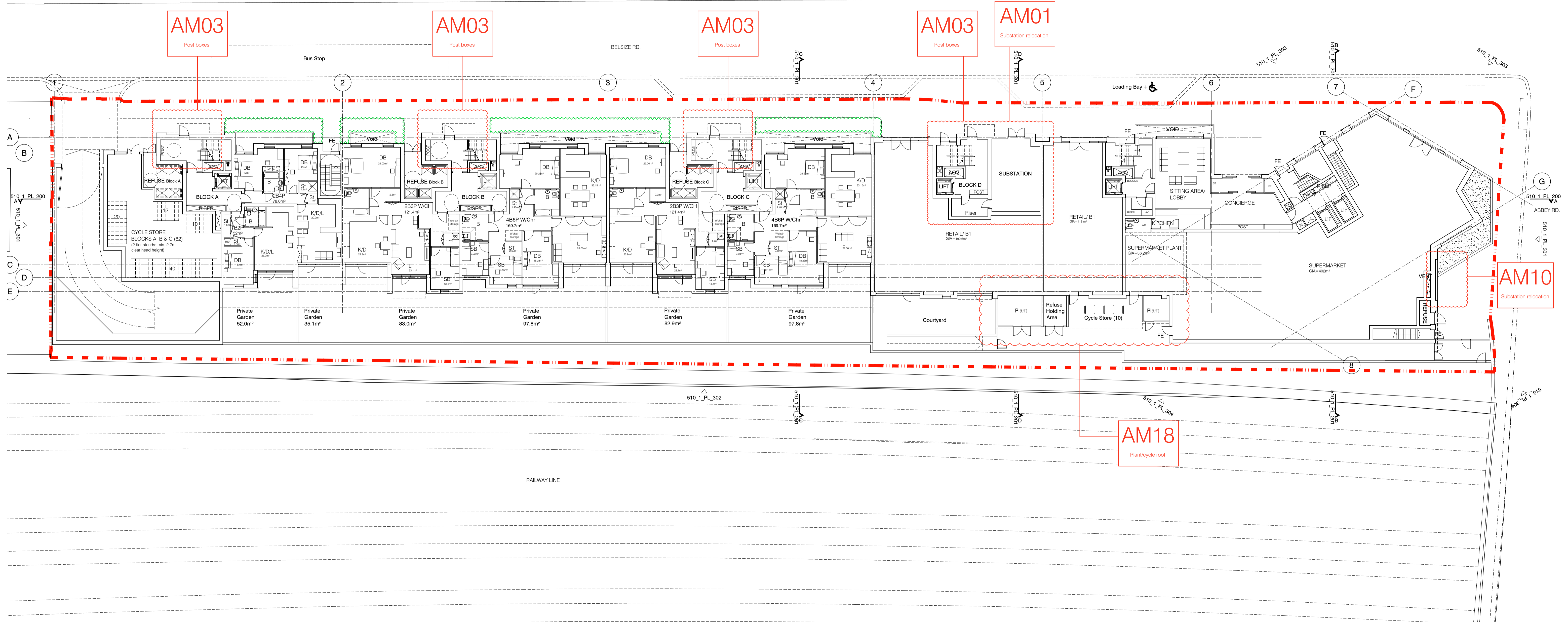
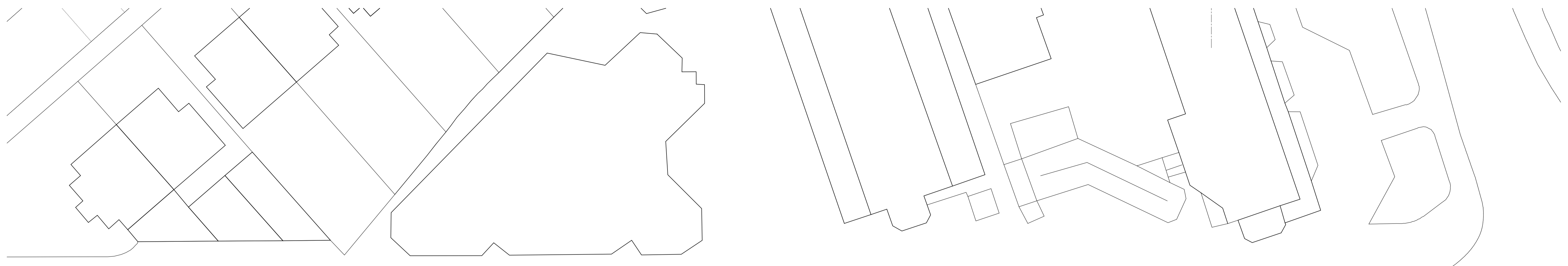
- MATERIAL KEY**
- A** - Brick work type 1: Red Brick, stretcher bond with light colour mortar. Openings to have a deep brick reveal (approx 190mm unless stated otherwise).
 - B** - Brick work type 2: Reflective blue/purple Brick, stretcher bond with dark grey mortar. Openings to have a deep brick reveal (approx 190mm unless stated otherwise).
 - C** - Brick work type 3: White glazed brick, stack bonded with white colour mortar, to Block F recessed balconies.
 - D** - Metal panel: bronze effect panels with hidden fixings and minimal joints.
 - E** - Shop front frameless glass curtain walling with 75mm aluminum capping at base, bronze effect aluminum framed double or triple glazed doors to match.
 - F** - Windows / doors: PPC aluminum framed double or triple glazed units (manufacturer to be agreed).
 - G** - Canopies: Pre-formed metal boxed canopy in bronze metallic finish with hidden structure and integral lighting.
 - H** - Perforated metal balustrade or privacy screen: perforated metal (bronze metallic finish) supported off PPC coated frame with hidden fixings and minimal joints - allow for non-uniform setting out of perforations - details to be agreed.
 - I** - Metal Railing Balustrade: formed from PPC vertical flats (approx 50 x 12mm).
 - J** - Metal Railing Balustrade: formed from PPC vertical flats (approx 50 x 12mm) extending to balcony soffit with metal plate fascia fixed to balcony edge.
 - K** - Precast concrete or stone coping to parapet wall - allow for reinforcement back to structure.
 - L** - Glass balustrade: frameless glass with no visible fixings.
 - M** - Brick work type 4: Green Glazed brickwork, stack bonded to residential entrances
 - N** - Hit and miss brickwork wall to basement cycle store - free area to meet ventilation requirements to basement.
 - O** - 1.2 m high Fagus sylvatica (beech) instant hedge planted in a double staggered row.
 - P** - Reconstituted Stone on fixing ancon bracket to form architrave detail to concierge/supermarket/retail entrances.
 - Q** - Aluminium PPC louvred doors/panels to refuse store/car park ramp/fire exits/substation/vent intake or exhaust locations.
 - R** - Brick work type 5: Slightly recessed brick wall with stepped brick coursing.
 - S** - Close boarded timber fence to meet Acoustic requirements.
 - T** - Brick work type 5: Reduced specification / off-shade brick wall forming retaining structure.

- AM01** Substation relocation
- AM10** Substation relocation



S73 APPLICATION			
rev	date	description	am aud
E	21.06.16	Amendment references added. Issued to planning	EN DPD
D	15.04.16	Amendment references added. Material Key updated. Issued to CBRE	DPD DB
C	18.12.15	Amendment references added. Issued to planning	BM DPD
B	04.10.13	Block F layout updates / parking & cycling spaces	BM DPD
A	30.08.13	Drawing amended and issued to design team for comment.	RL DPD

PLANNING					
Dispeker Wharf 38 Graham Street London N1 8JX t: 020 7336 7777 w: www.ptea.co.uk f: 020 7336 0770 e: forename.surname@ptea.co.uk					
PTEa POLLARD THOMAS EDWARDS architects					
project ABBEY AREA REGENERATION - PHASE1 LONDON	job no. 12_510	drawn BM	audited DPD	scale 1:200 @ A1	date JUL 13
drawing title GENERAL ARRANGEMENT BASEMENT FLOOR PLAN			drawing no. 510_1_PL_099	revision E	



GENERAL NOTES

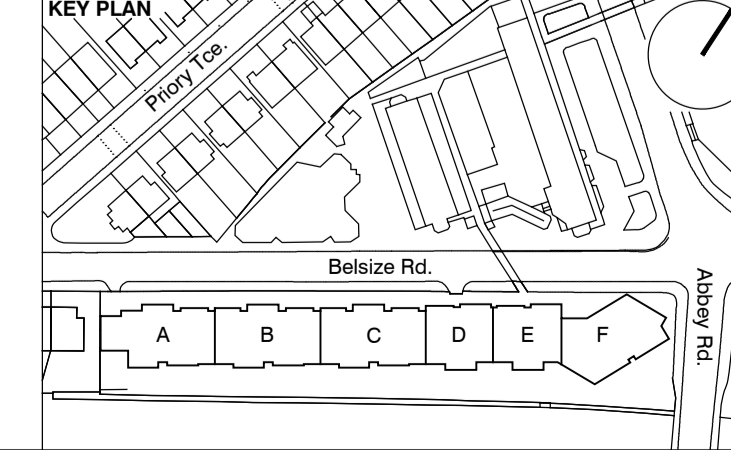
- This drawing is copyright of PTE architects
- Use figured dimensions only. DO NOT SCALE.
- All dimensions are in millimetres unless noted otherwise
- All levels are in metres above ordnance datum unless noted otherwise
- This drawing must be read in conjunction with all other relevant drawings and specifications from the Architect and other consultants

NOTES

- All setting out to be confirmed on site prior to construction - any discrepancy must be immediately reported to the Architect.

MATERIAL KEY

- A** - Brick work type 1: Red Brick, stretcher bond with light colour mortar. Openings to have a deep brick reveal (approx 190mm unless stated otherwise).
- B** - Brick work type 2: Reflective blue/purple Brick, stretcher bond with dark grey mortar. Openings to have a deep brick reveal (approx 190mm unless stated otherwise).
- C** - Brick work type 3: White glazed brick, stack bonded with white colour mortar, to Block F recessed balconies.
- D** - Metal panel: bronze effect panels with hidden fixings and minimal joints.
- E** - Shop front frameless glass curtain walling with 75mm aluminum capping at base, bronze effect aluminum framed double or triple glazed doors to match.
- F** - Windows / doors: PPC aluminum framed double or triple glazed units (manufacturer to be agreed).
- G** - Canopies: Pre-formed metal boxed canopy in bronze metallic finish with hidden structure and integral lighting.
- H** - Perforated metal balustrade or privacy screen: perforated metal (bronze metallic finish) supported off PPC coated frame with hidden fixings and minimal joints - allow for non-uniform setting out of perforations - details to be agreed.
- I** - Metal Railing Balustrade: formed from PPC vertical flats (approx 50 x 12mm).
- J** - Metal Railing Balustrade: formed from PPC vertical flats (approx 50 x 12mm) extending to balcony soffit with metal plate fascia fixed to balcony edge.
- K** - Precast concrete or stone coping to parapet wall - allow for reinforcement back to structure.
- L** - Glass balustrade: frameless glass with no visible fixings.
- M** - Brick work type 4: Green Glazed brickwork, stack bonded to residential entrances
- N** - Hit and miss brickwork wall to basement cycle store - free area to meet ventilation requirements to basement.
- O** - 1.2 m high Fagus sylvatica (beech) instant hedge planted in a double staggered row.
- P** - Reconstituted Stone on fixing ancon bracket to form architrave detail to concierge/supermarket/retail entrances.
- Q** - Aluminium PPC louvred doors/panels to refuse store/car park ramp/fire exits/substation/vent intake or exhaust locations.
- R** - Brick work type 2: Slightly recessed brick wall with stepped brick coursing.
- S** - Close boarded timber fence to meet Acoustic requirements.
- T** - Brick work type 5: Reduced specification / off-shade brick wall forming retaining structure.



S73 APPLICATION			EN	DPD
E	21.06.16	Amendment references added. Issued to planning	EN	DPD
D	15.04.16	Amendment references added. Material Key updated. Issued to CBRE	DPD	DB
C	18.12.15	Amendment references added. Issued to planning	BM	DPD
B	04.10.13	Block F layout updates / Concierge & entrance updates	BM	DPD
A	30.08.13	Drawing amended and issued to design team for comment.	RL	DPD
rev	date	description	dm	aud

PLANNING

Dienspeker Wharf
38 Graham Street
London N1 8JX

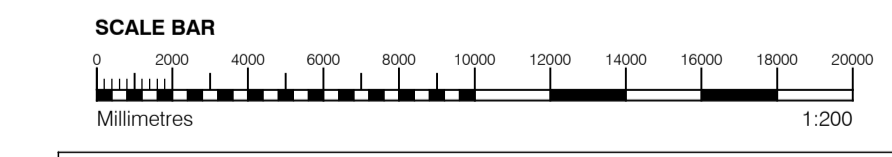
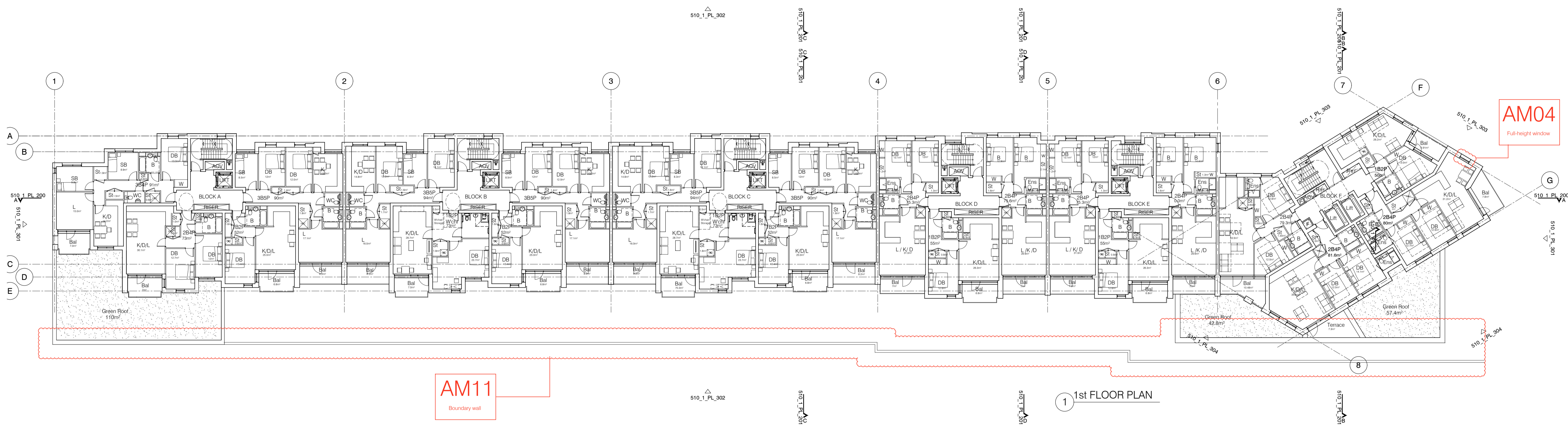
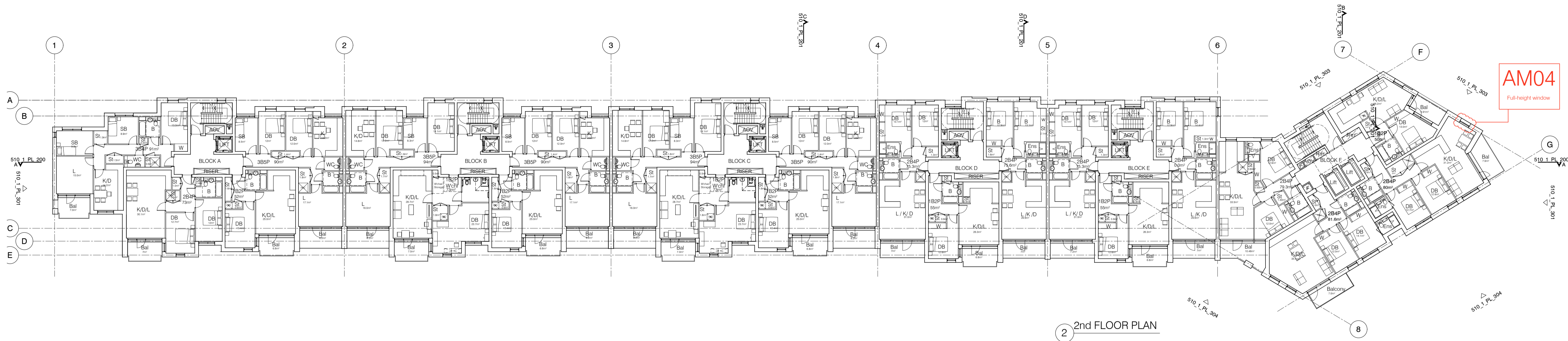
t: 020 7336 7777 w: www.ptea.co.uk
f: 020 7336 0770 e: forename.surname@ptea.co.uk

project: ABBEY AREA REGENERATION - PHASE 1
job no. 12_510
dwg title: GENERAL ARRANGEMENT GROUND FLOOR PLAN

drawn: PT
checked: DPD
scale: 1:200 @ A1
date: JUL 13

sig. no. 510_1_PL_100
rev. E





GENERAL NOTES

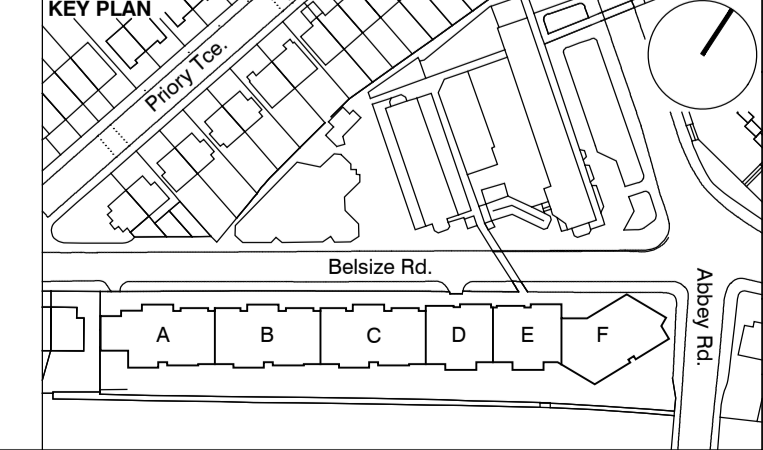
- This drawing is copyright of PTE architects
- Use figured dimensions only. DO NOT SCALE.
- All dimensions are in millimetres unless noted otherwise
- All levels are in metres above ordnance datum unless noted otherwise
- This drawing must be read in conjunction with all other relevant drawings and specifications from the Architect and other consultants

NOTES

- All setting out to be confirmed on site prior to construction - any discrepancy must be immediately reported to the Architect.

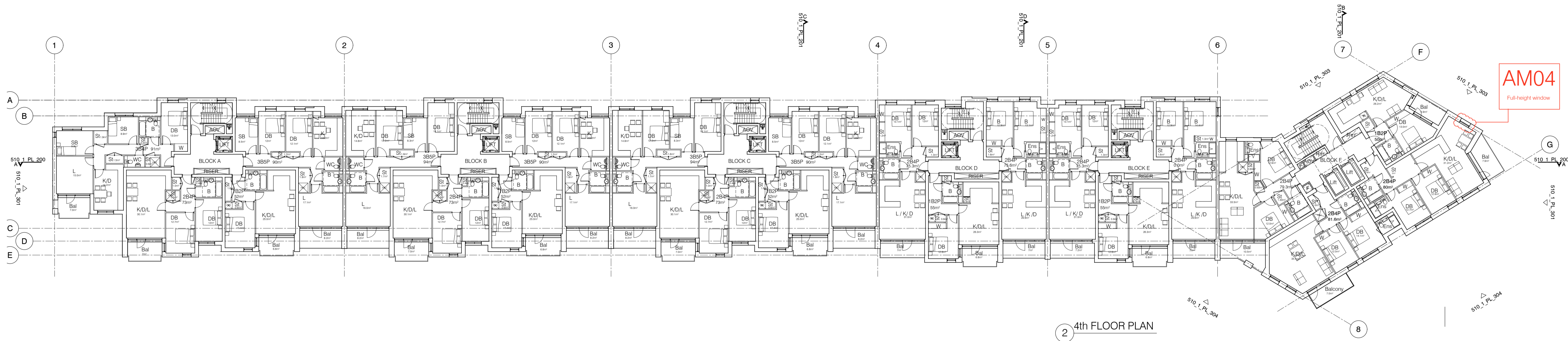
MATERIAL KEY

- A** - Brick work type 1: Red Brick, stretcher bond with light colour mortar. Openings to have a deep brick reveal (approx 190mm unless stated otherwise).
- B** - Brick work type 2: Reflective blue/purple Brick, stretcher bond with dark grey mortar. Openings to have a deep brick reveal (approx 190mm unless stated otherwise).
- C** - Brick work type 3: White glazed brick, stack bonded with white colour mortar, to Block F recessed balconies.
- D** - Metal panel: bronze effect panels with hidden fixings and minimal joints.
- E** - Shop front frameless glass curtain walling with 75mm aluminum capping at base, bronze effect aluminum framed double or triple glazed doors to match.
- F** - Windows / doors: PPC aluminum framed double or triple glazed units (manufacturer to be agreed).
- G** - Canopies: Pre-formed metal boxed canopy in bronze metallic finish with hidden structure and integral lighting.
- H** - Perforated metal balustrade or privacy screen: perforated metal (bronze metallic finish) supported off PPC coated frame with hidden fixings and minimal joints - allow for non-uniform setting out of perforations - details to be agreed.
- I** - Metal Railing Balustrade: formed from PPC vertical flats (approx 50 x 12mm).
- J** - Metal Railing Balustrade: formed from PPC vertical flats (approx 50 x 12mm) extending to balcony soffit with metal plate fascia fixed to balcony edge.
- K** - Precast concrete or stone coping to parapet wall - allow for reinforcement back to structure.
- L** - Glass balustrade: frameless glass with no visible fixings.
- M** - Brick work type 4: Green Glazed brickwork, stack bonded to residential entrances
- N** - Hit and miss brickwork wall to basement cycle store - free area to meet ventilation requirements to basement.
- O** - 1.2 m high Fagus sylvatica (beech) instant hedge planted in a double staggered row.
- P** - Reconstituted Stone on fixing ancon bracket to form architrave detail to concierge/supermarket/retail entrances.
- Q** - Aluminium PPC louvred doors/panels to refuse store/car park ramp/fire exits/substation/vent intake or exhaust locations.
- R** - Brick work type 2: Slightly recessed brick wall with stepped brick coursing.
- S** - Close boarded timber fence to meet Acoustic requirements.
- T** - Brick work type 5: Reduced specification / off-shade brick wall forming retaining structure.

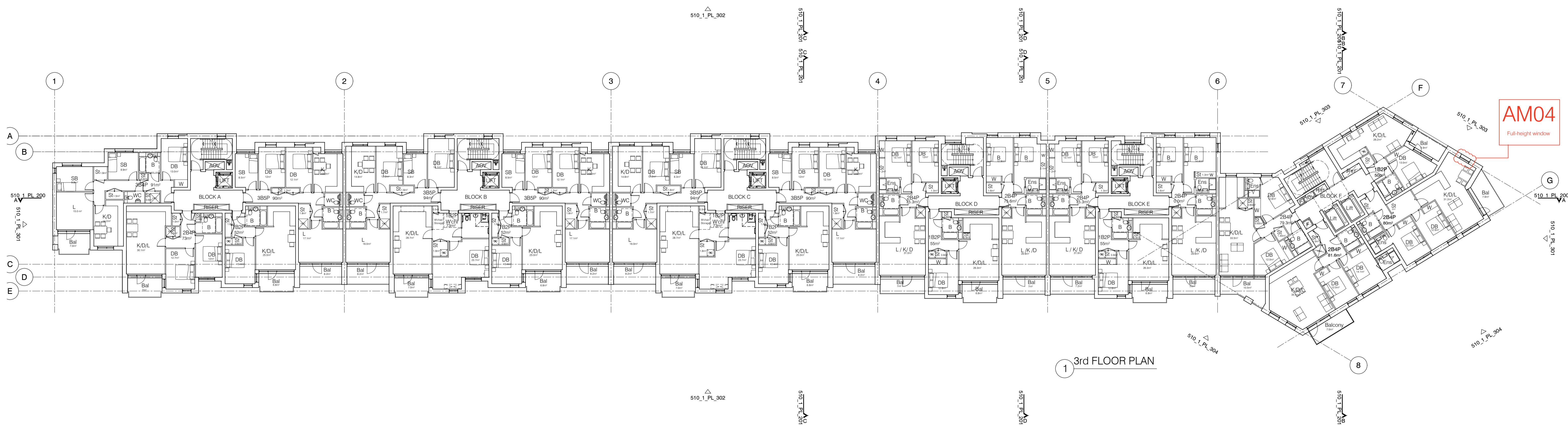


SECTION 73 APPLICATION			
E	21.06.16	Amendment references added. Material Key updated. Issued to planning	EN DPD
D	15.04.16	Amendment references added. Material Key updated. Issued to CBRE	DPD DB
C	18.12.15	Amendment references added. Issued to planning	BM DPD
B	04.10.13	Balcony area in Block A revised	BM DPD
A	30.08.13	Drawing amended and issued to design team for comment.	RL DPD
rev	date	description	dm aud

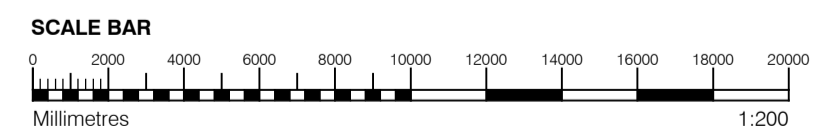
PLANNING			
<p>Dienspeker Wharf 38 Graham Street London N1 8JX</p> <p>t: 020 7336 7777 w: www.ptea.co.uk f: 020 7336 0770 e: forename.surname@ptea.co.uk</p>			
project	ABBEY AREA REGENERATION - PHASE 1	job no.	12_510
drawn	BM	audited	DPD
scale	1:200 @ A1	date	JUL 13
sheet title	GENERAL ARRANGEMENT 1st & 2nd FLOOR PLANS	sheet no.	510_1_PL_101
rev		date	E



2 4th FLOOR PLAN



1 3rd FLOOR PLAN



GENERAL NOTES

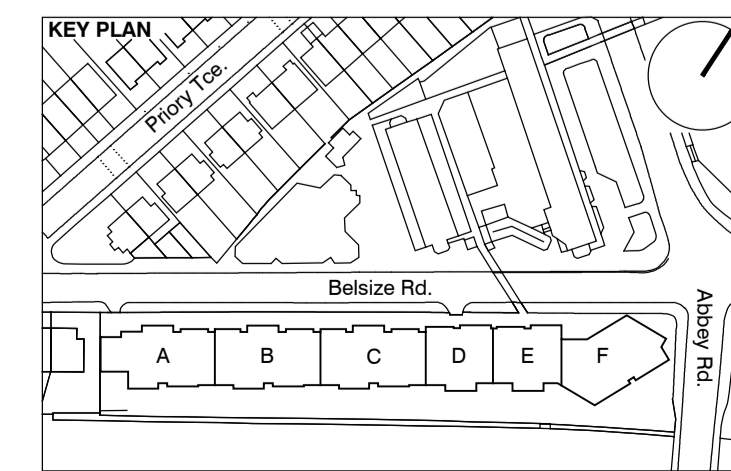
- This drawing is copyright of PTE architects
- Use figured dimensions only. DO NOT SCALE.
- All dimensions are in millimetres unless noted otherwise
- All levels are in metres above ordnance datum unless noted otherwise
- This drawing must be read in conjunction with all other relevant drawings and specifications from the Architect and other consultants

NOTES

- All setting out to be confirmed on site prior to construction - any discrepancy must be immediately reported to the Architect.

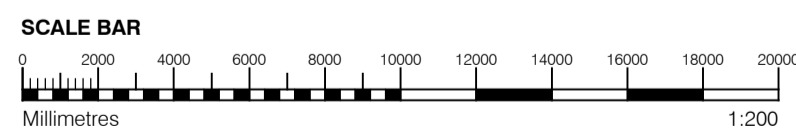
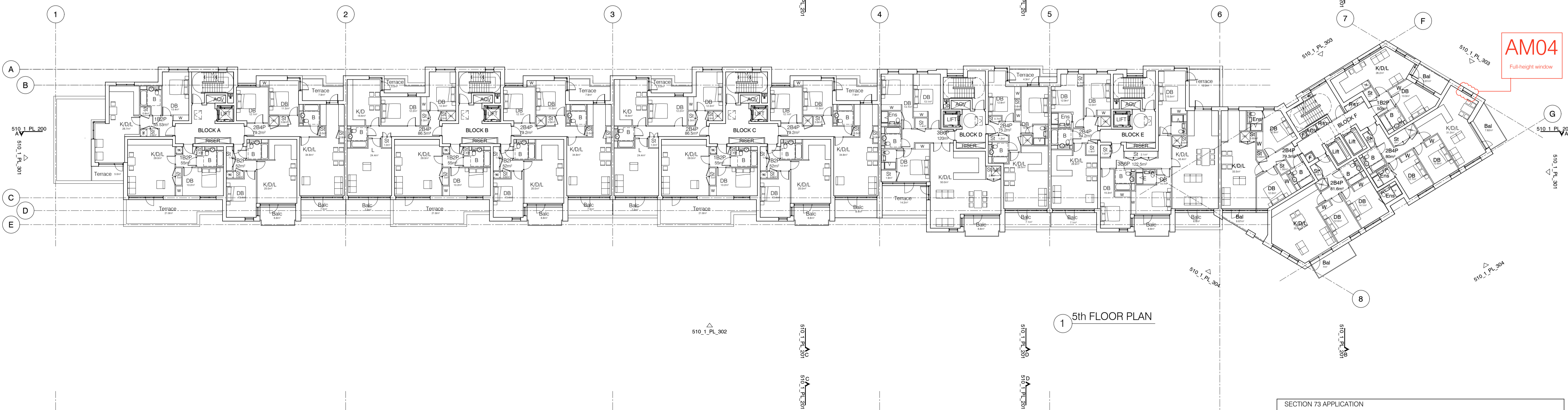
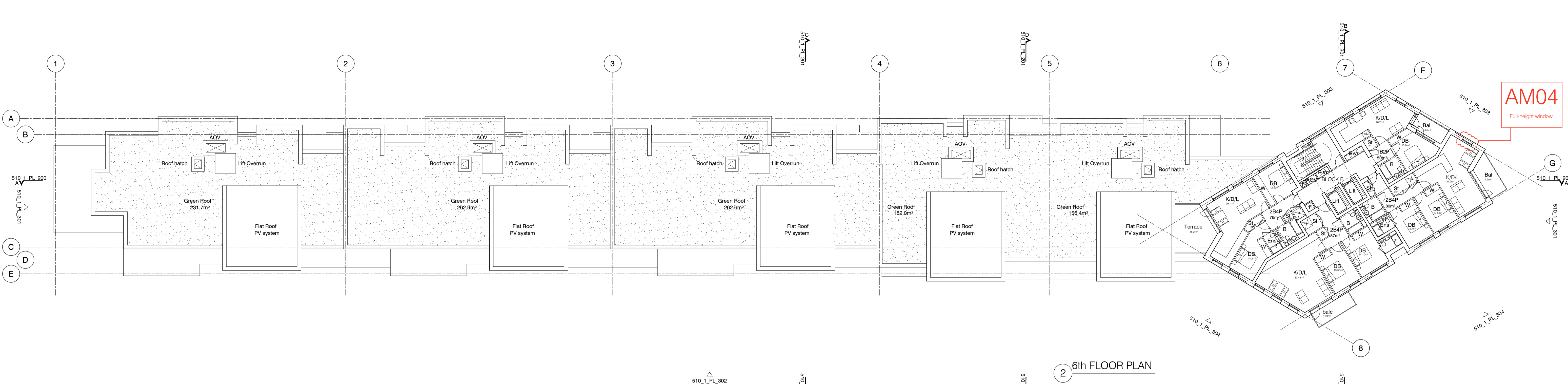
MATERIAL KEY

- A** - Brick work type 1: Red Brick, stretcher bond with light colour mortar. Openings to have a deep brick reveal (approx 190mm unless stated otherwise).
- B** - Brick work type 2: Reflective blue/purple Brick, stretcher bond with dark grey mortar. Openings to have a deep brick reveal (approx 190mm unless stated otherwise).
- C** - Brick work type 3: White glazed brick, stack bonded with white colour mortar, to Block F recessed balconies.
- D** - Metal panel: bronze effect panels with hidden fixings and minimal joints.
- E** - Shop front frameless glass curtain walling with 75mm aluminum capping at base, bronze effect aluminum framed double or triple glazed units to match.
- F** - Windows / doors: PPC aluminum framed double or triple glazed units (manufacturer to be agreed).
- G** - Canopies: Pre-formed metal boxed canopy in bronze metallic finish with hidden structure and integral lighting.
- H** - Perforated metal balustrade or privacy screen: perforated metal (bronze metallic finish) supported off PPC coated frame with hidden fixings and minimal joints - allow for non-uniform setting out of perforations - details to be agreed.
- I** - Metal Railing Balustrade: formed from PPC vertical flats (approx 50 x 12mm).
- J** - Metal Railing Balustrade: formed from PPC vertical flats (approx 50 x 12mm) extending to balcony soffit with metal plate fascia fixed to balcony edge.
- K** - Precast concrete or stone coping to parapet wall - allow for reinforcement back to structure.
- L** - Glass balustrade: frameless glass with no visible fixings.
- M** - Brick work type 4: Green Glazed brickwork, stack bonded to residential entrances
- N** - Hit and miss brickwork wall to basement cycle store - free area to meet ventilation requirements to basement.
- O** - 1.2 m high Fagus sylvatica (beech) instant hedge planted in a double staggered row.
- P** - Reconstituted Stone on fixing ancon bracket to form architrave detail to concierge/supermarket/retail entrances.
- Q** - Aluminium PPC louvred doors/panels to refuse store/car park ramp/fire exits/substation/vent intake or exhaust locations.
- R** - Brick work type 2: Slightly recessed brick wall with stepped brick coursing.
- S** - Close boarded timber fence to meet Acoustic requirements.
- T** - Brick work type 5: Reduced specification / off-shade brick wall forming retaining structure.



SECTION 73 APPLICATION			
E	21.06.16	Amendment references added. Material Key updated. Issued to planning	EN DPD
D	15.04.16	Amendment references added. Material Key updated. Issued to CBRE	DPD DB
C	18.12.15	Amendment references added. Issued to planning	BM DPD
B	04.10.13	Balcony area in Block A revised	BM DPD
A	30.08.13	Drawing amended and issued to design team for comment.	RL DPD
rev	date	description	dm aud

PLANNING			
drawing status			
Diespeker Wharf 38 Graham Street London N1 8JX			
t:	020 7336 7777	w:	www.ptea.co.uk
f:	020 7336 0770	e:	forename.surname@ptea.co.uk
project	ABEY AREA REGENERATION - PHASE 1	job no.	12_510
drawn	BM	audited	DPD
scale	1:200 @ A1	date	JUL 13
sheet title	GENERAL ARRANGEMENT 3rd & 4th FLOOR PLANS	fig no.	510_1_PL_102
rev			E



GENERAL NOTES

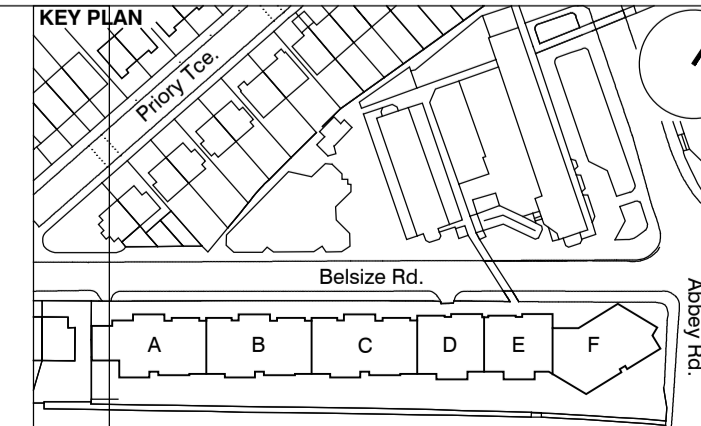
- This drawing is copyright of PTE architects
- Use figured dimensions only, DO NOT SCALE.
- All dimensions are in millimetres unless noted otherwise
- All levels are in metres above Ordnance datum unless noted otherwise
- This drawing must be read in conjunction with all other relevant drawings and specifications from the Architect and other consultants

NOTES

- All setting out to be confirmed on site prior to construction - any discrepancy must be immediately reported to the Architect.

MATERIAL KEY

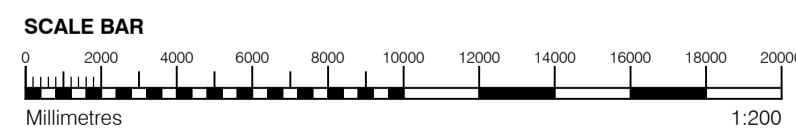
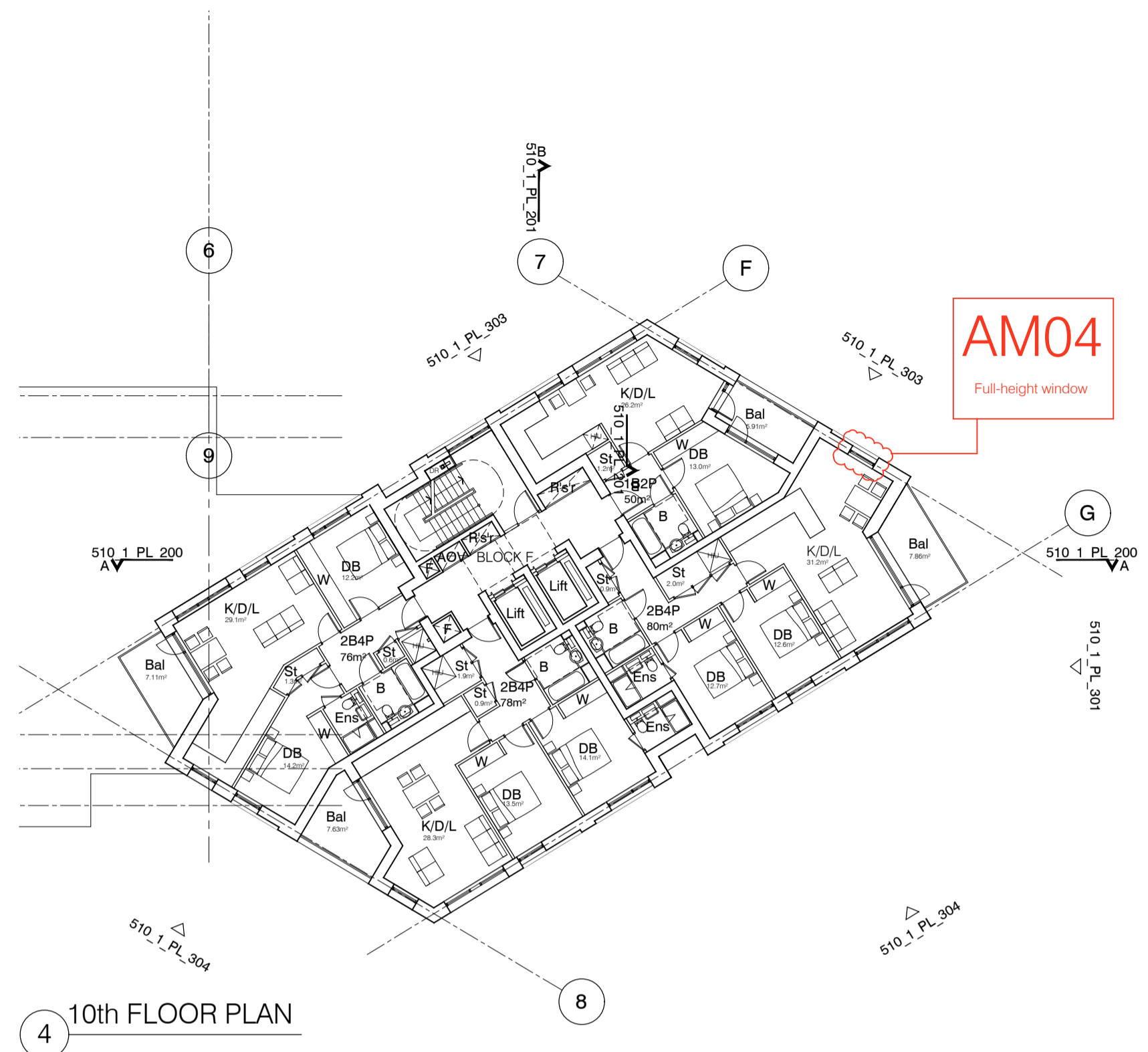
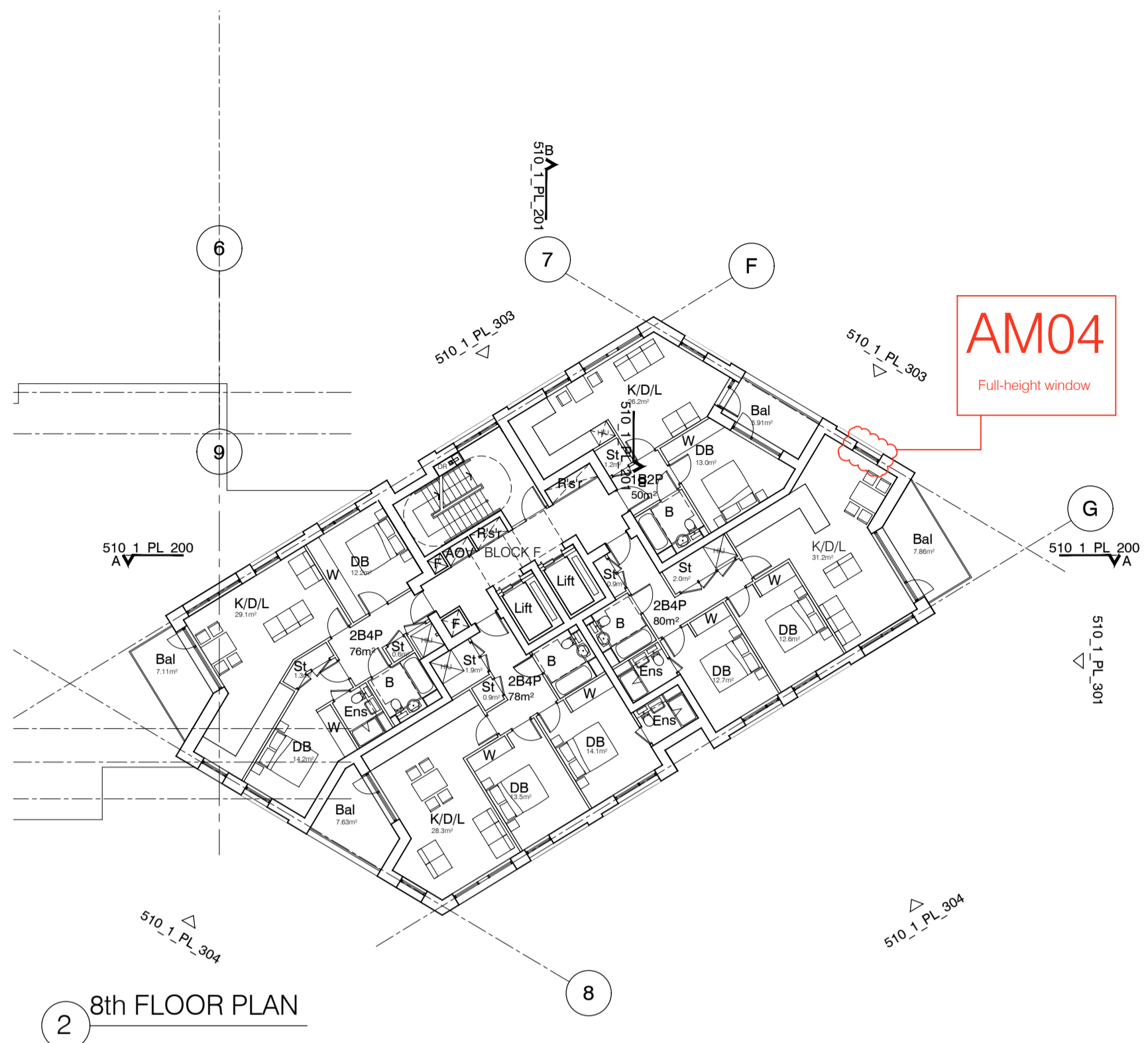
- A** - Brick work type 1: Red Brick, stretcher bond with light colour mortar. Openings to have a deep brick reveal (approx 190mm unless stated otherwise).
- B** - Brick work type 2: Reflective blue/purple Brick, stretcher bond with dark grey mortar. Openings to have a deep brick reveal (approx 190mm unless stated otherwise).
- C** - Brick work type 3: White glazed brick, stack bonded with white colour mortar, to Block F recessed balconies.
- D** - Metal panel: bronze effect panels with hidden fixings and minimal joints.
- E** - Shop front frameless glass curtain walling with 75mm aluminum capping at base, bronze effect aluminum framed double or triple glazed doors to match.
- F** - Windows / doors: PPC aluminum framed double or triple glazed units (manufacturer to be agreed).
- G** - Canopies: Pre-formed metal boxed canopy in bronze metallic finish with hidden structure and integral lighting.
- H** - Perforated metal balustrade or privacy screen: perforated metal (bronze metallic finish) supported off PPC coated frame with hidden fixings and minimal joints - allow for non-uniform setting out of perforations - details to be agreed.
- I** - Metal Railing Balustrade: formed from PPC vertical flats (approx 50 x 12mm).
- J** - Metal Railing Balustrade: formed from PPC vertical flats (approx 50 x 12mm) extending to balcony soffit with metal plate fascia fixed to balcony edge.
- K** - Precast concrete or stone coping to parapet wall - allow for reinforcement back to structure.
- L** - Glass balustrade: frameless glass with no visible fixings.
- M** - Brick work type 4: Green Glazed brickwork, stack bonded to residential entrances
- N** - Hit and miss brickwork wall to basement cycle store - free area to meet ventilation requirements to basement.
- O** - 1.2 m high Fagus sylvatica (beech) instant hedge planted in a double staggered row.
- P** - Reconstituted Stone on fixing ancon bracket to form architrave detail to concierge/supermarket/retail entrances.
- Q** - Aluminium PPC louvred doors/panels to refuse store/car park ramp/fire exits/substation/vent intake or exhaust locations.
- R** - Brick work type 2: Slightly recessed brick wall with stepped brick coursing.
- S** - Close boarded timber fence to meet Acoustic requirements.
- T** - Brick work type 5: Reduced specification / off-shade brick wall forming retaining structure.



SECTION 73 APPLICATION			
E	21.06.16	Amendment references added. Material Key updated. Issued to planning	EN DPD
D	15.04.16	Amendment references added. Material Key updated. Issued to CBRE	DPD DB
C	18.12.15	Amendment references added. Issued to planning	BM DPD
B	04.10.13	Windows amendments in Southern Elevation	BM DPD
A	30.08.13	Drawing amended and issued to design team for comment.	RL DPD
rev.	date	description	dm aud

PLANNING						
Drawing status						
Dispeker Wharf 38 Graham Street London N1 8JX						
t:	020 7336 7777	w:	www.ptea.co.uk			
f:	020 7336 0770	e:	forename.surname@ptea.co.uk			
project	ABBAY AREA REGENERATION - PHASE 1	pid.no.	12_510	drawn	PT	scale
	LONDON			checked	DPD	1:200 @ A1
date						date
						JUL 13
GENERAL ARRANGEMENT 5th & 6th FLOOR PLANS						
				fig. no.	510_1_PL_103	
				rev.	E	



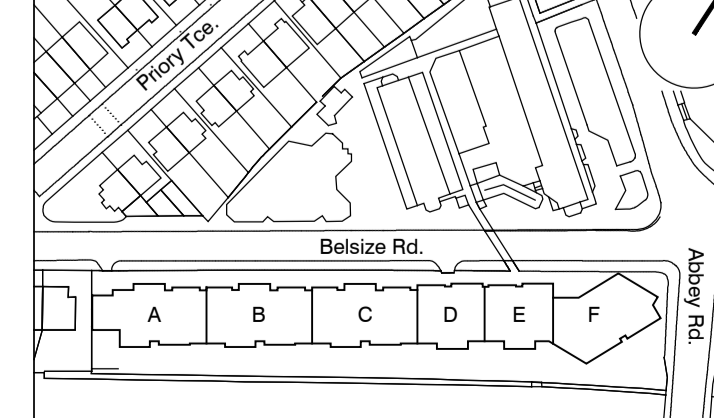


- GENERAL NOTES**
- This drawing is copyright of PTE architects
 - Use figured dimensions only. DO NOT SCALE.
 - All dimensions are in millimetres unless noted otherwise
 - All levels are in metres above ordnance datum unless noted otherwise
 - This drawing must be read in conjunction with all other relevant drawings and specifications from the Architect and other consultants
- NOTES**
- All setting out to be confirmed on site prior to construction - any discrepancy must be immediately reported to the Architect.

MATERIAL KEY

- A** - Brick work type 1: Red Brick, stretcher bond with light colour mortar. Openings to have a deep brick reveal (approx 100mm unless stated otherwise).
- B** - Brick work type 2: Reflective blue/purple Brick, stretcher bond with dark grey mortar. Openings to have a deep brick reveal (approx 100mm unless stated otherwise).
- C** - Brick work type 3: White glazed brick, stack bonded with white colour mortar, to Block F recessed balconies.
- D** - Metal panel: bronze effect panels with hidden fixings and minimal joints.
- E** - Shop front frameless glass curtain walling with 75mm aluminium capping at base, bronze effect aluminium framed double or triple glazed doors to match.
- F** - Windows / doors: PPC aluminium framed double or triple glazed units (manufacturer to be agreed).
- G** - Canopies: Pre-formed metal boxed canopy in bronze metallic finish with hidden structure and integral lighting.
- H** - Perforated metal balustrade or privacy screen: perforated metal (bronze metallic finish) supported off PPC coated frame with hidden fixings and minimal joints - allow for non-uniform setting out of perforations - details to be agreed.
- I** - Metal Railing Balustrade: formed from PPC vertical flats (approx 50 x 12mm).
- J** - Metal Railing Balustrade: formed from PPC vertical flats (approx 50 x 12mm) extending to balcony soffit with metal plate fascia fixed to balcony edge.
- K** - Precast concrete or stone coping to parapet wall - allow for reinforcement back to structure.
- L** - Glass balustrade: frameless glass with no visible fixings.
- M** - Brick work type 4: Green Glazed brickwork, stack bonded to residential entrances
- N** - Hit and miss brickwork wall to basement cycle store - free area to meet ventilation requirements to basement.
- O** - 1.2 m high Fagus sylvatica (beech) instant hedge planted in a double staggered row.
- P** - Reconstituted Stone on fixing ancon bracket to form architrave detail to concierge/supermarket/retail entrances.
- Q** - Aluminium PPC louvered doors/panels to refuse store/car park ramp/fire exits/substation/vent intake or exhaust locations.
- R** - Brick work type 2: Slightly recessed brick wall with stepped brick coursing.
- S** - Close boarded timber fence to meet Acoustic requirements.
- T** - Brick work type 5: Reduced specification / off-shade brick wall forming retaining structure.

KEY PLAN



SECTION 73 APPLICATION			
C	21.06.16	Amendment references added. Material Key updated. Issued to planning	EN DPD
B	15.04.16	Amendment references added. Material Key updated. Issued to CBRE	DPD DB
A	18.12.15	Amendment references added. Issued to planning	BM DPD

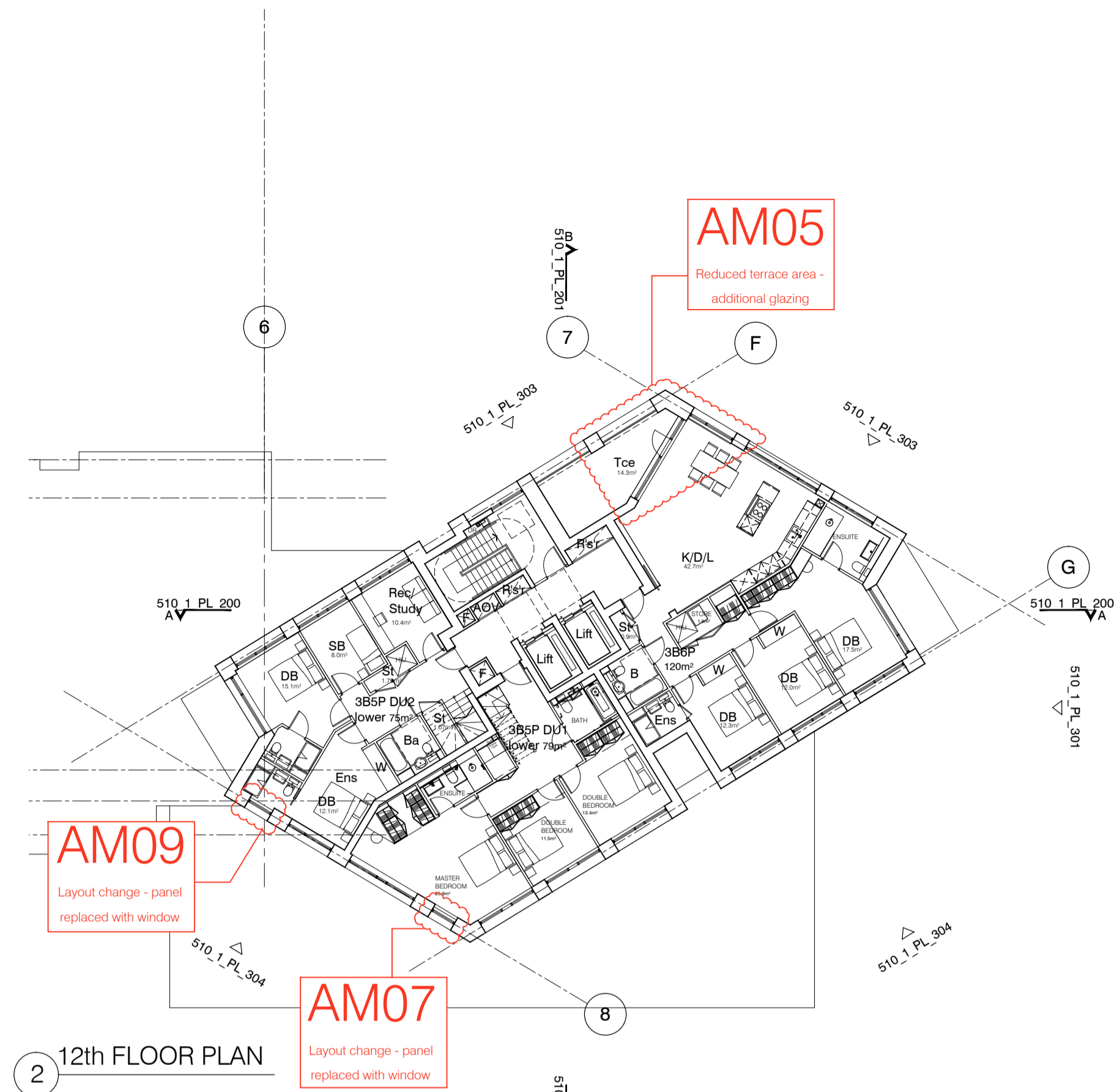
rev	date	description	dm	aud
drawing status				

PLANNING

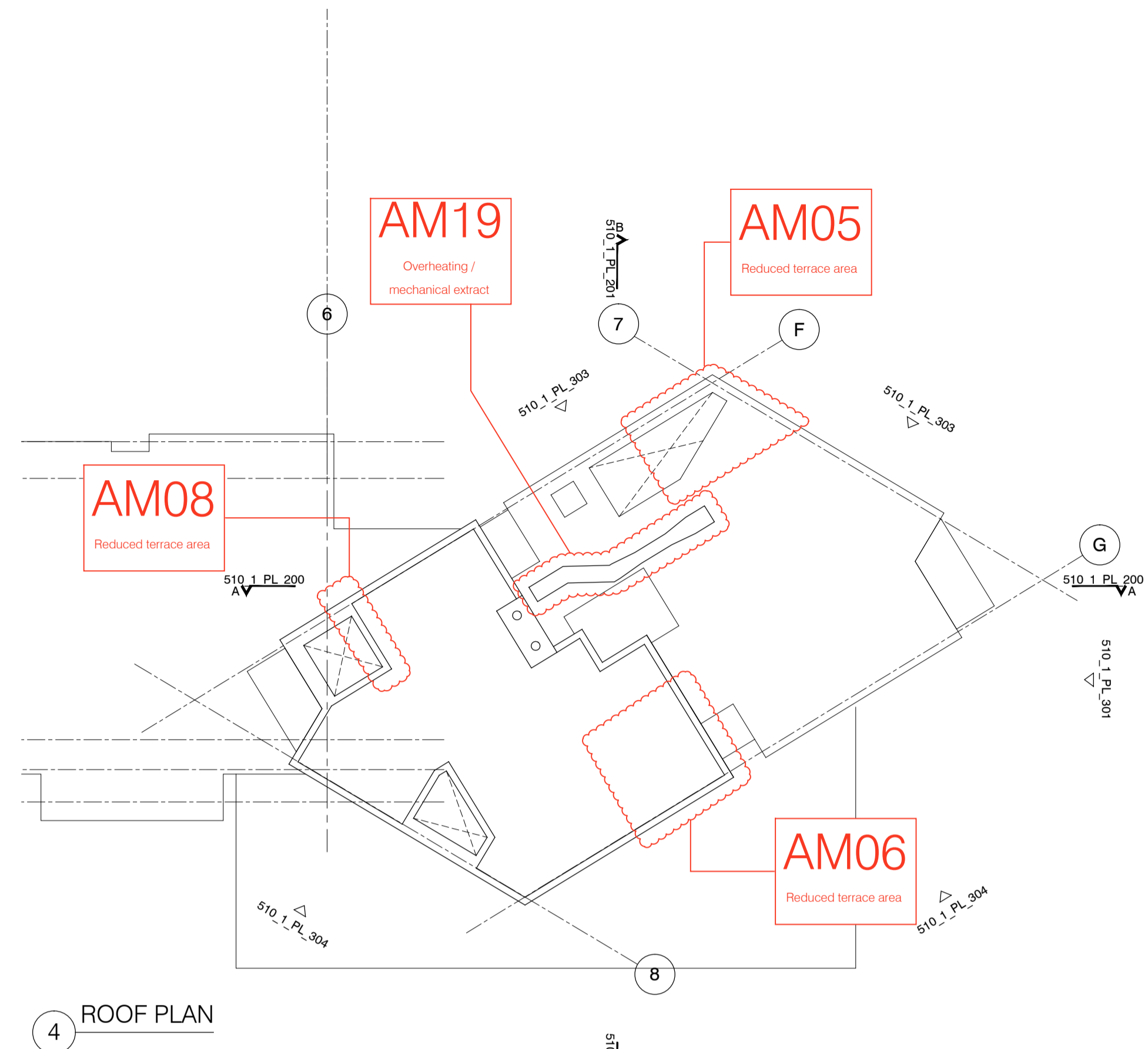
project: ABBEY AREA REGENERATION - PHASE 1
 38 Graham Street
 London N1 8JX
 t: 020 7336 7777 w: www.ptea.co.uk
 f: 020 7336 0770 e: forename.surname@ptea.co.uk



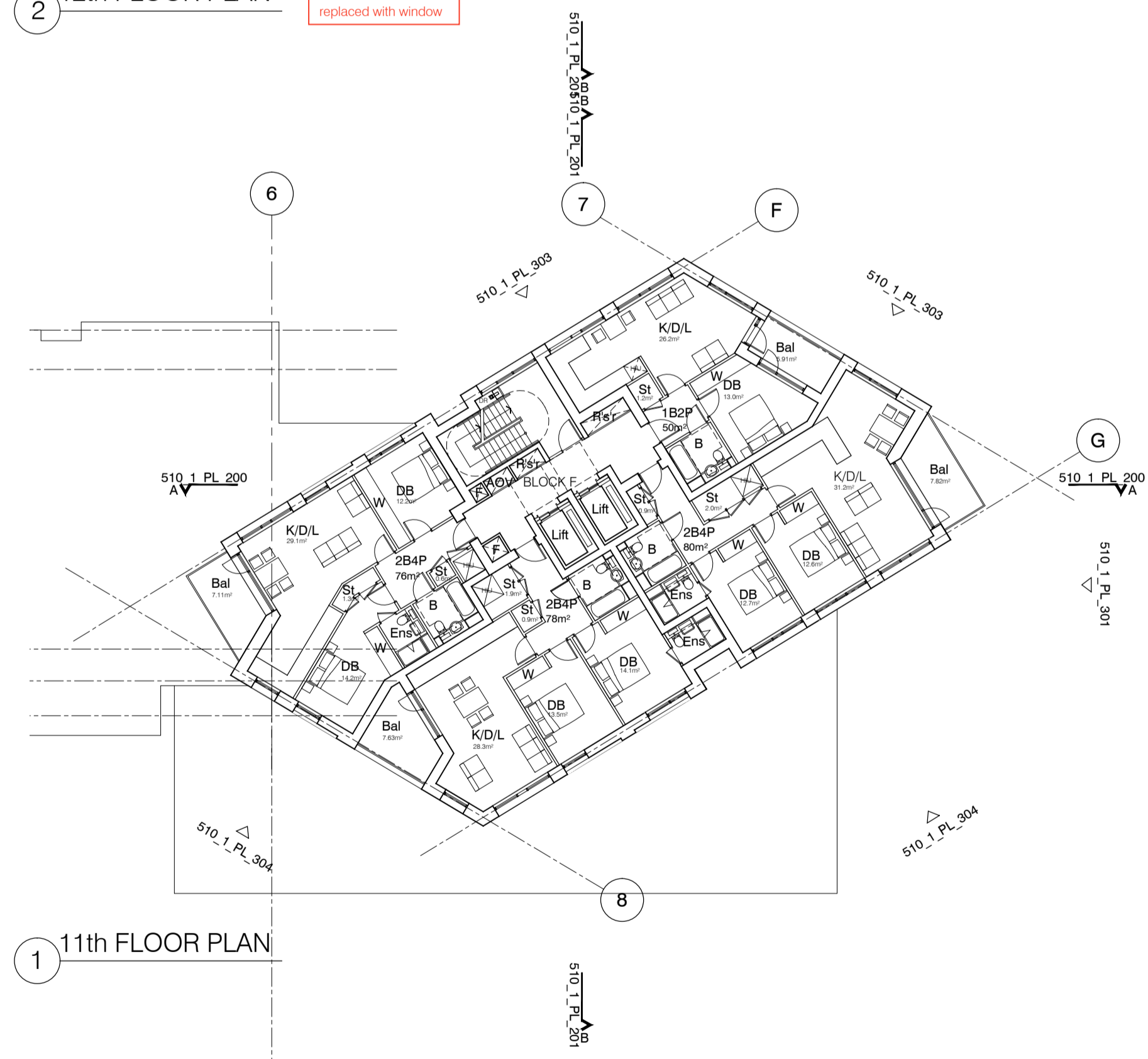
drawn	audited	scale	date
12_510	PT	1:200 @ A1	JUL 13
GENERAL ARRANGEMENT 7th, 8th, 9th & 10th FLOOR PLANS		fig. no. 510_1_PL_104	rev C



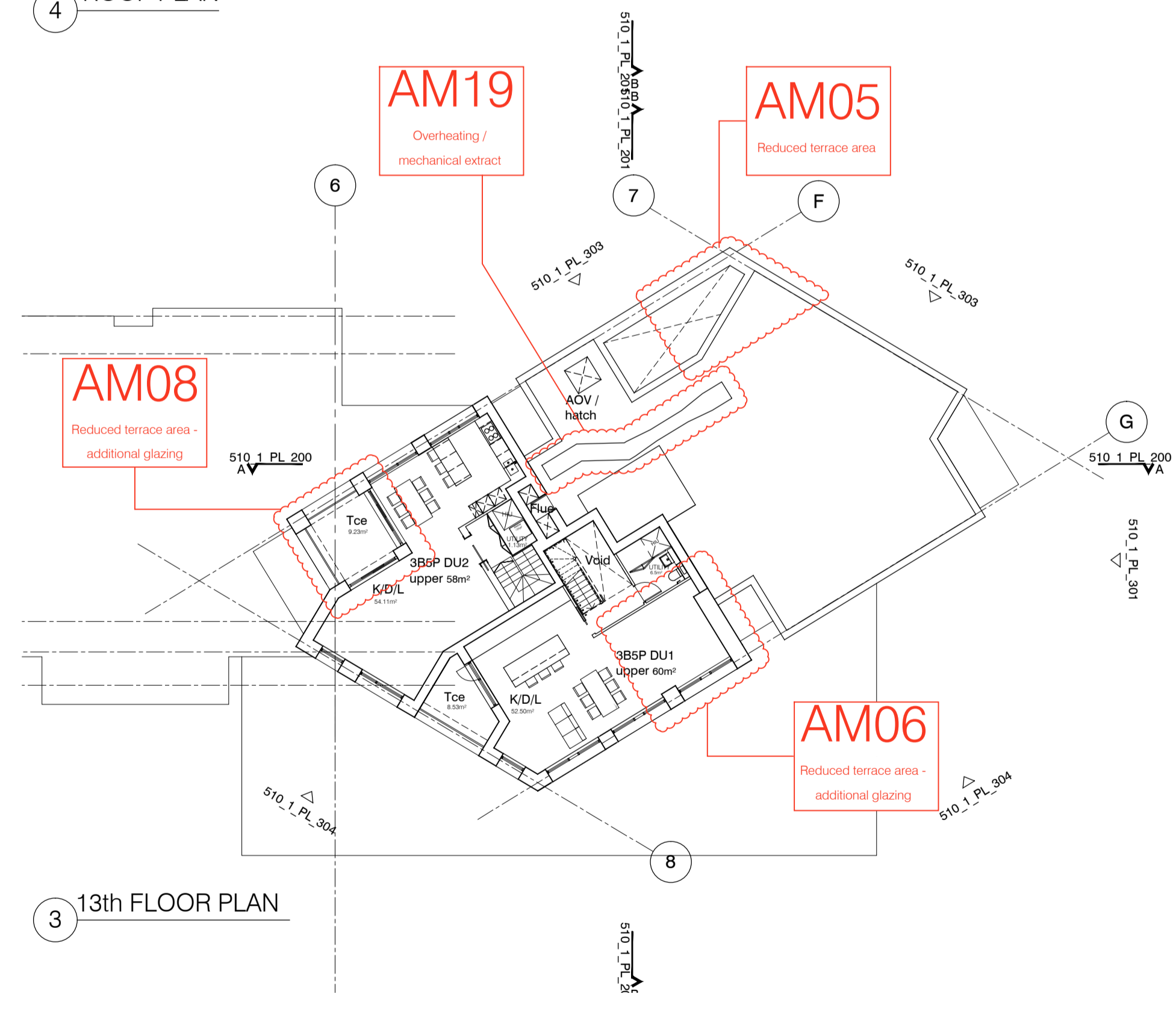
2 12th FLOOR PLAN



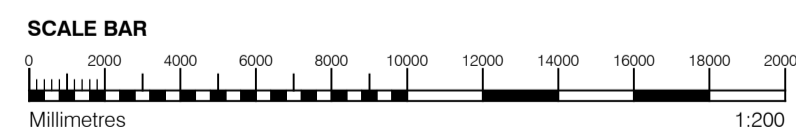
4 ROOF PLAN



1 11th FLOOR PLAN



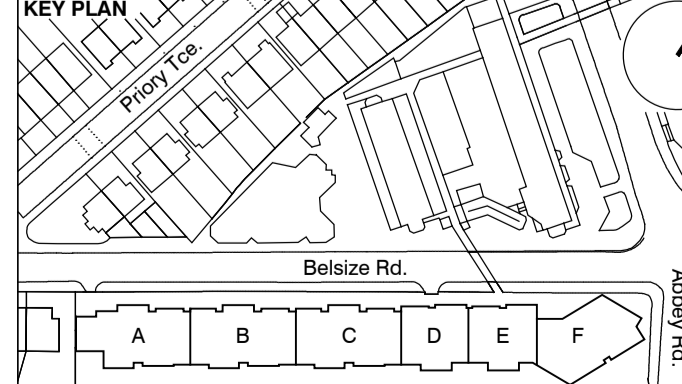
3 13th FLOOR PLAN



- GENERAL NOTES**
- This drawing is copyright of PTE architects
 - Use figured dimensions only. DO NOT SCALE.
 - All dimensions are in millimetres unless noted otherwise
 - All levels are in metres above ordnance datum unless noted otherwise
 - This drawing must be read in conjunction with all other relevant drawings and specifications from the Architect and other consultants
- NOTES**
- All setting out to be confirmed on site prior to construction - any discrepancy must be immediately reported to the Architect.

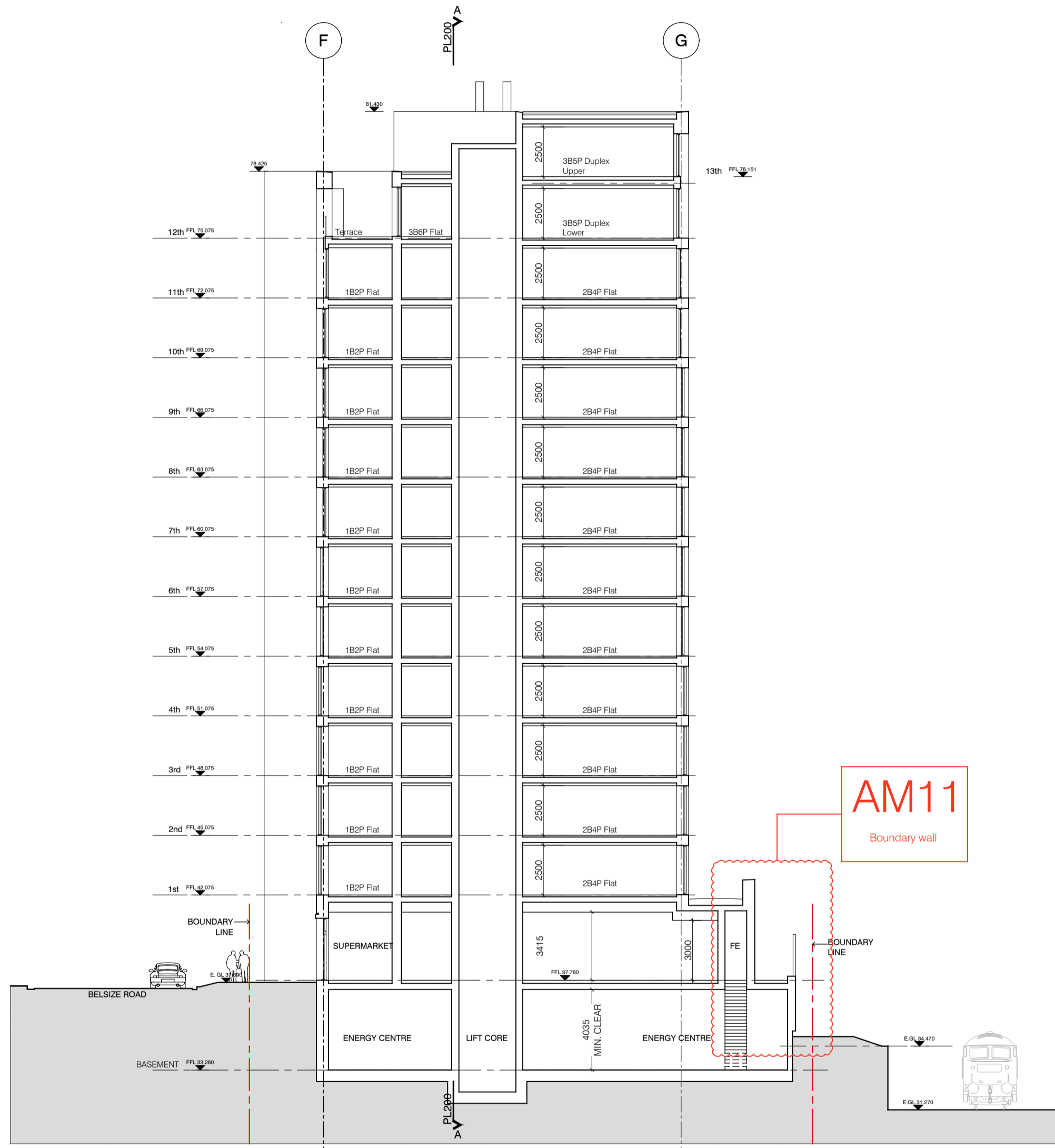
- MATERIAL KEY**
- A** - Brick work type 1: Red Brick, stretcher bond with light colour mortar. Openings to have a deep brick reveal (approx 190mm unless stated otherwise).
 - B** - Brick work type 2: Reflective blue/purple Brick, stretcher bond with dark grey mortar. Openings to have a deep brick reveal (approx 190mm unless stated otherwise).
 - C** - Brick work type 3: White glazed brick, stack bonded with white colour mortar, to Block F recessed balconies.
 - D** - Metal panel: bronze effect panels with hidden fixings and minimal joints.
 - E** - Shop front frameless glass curtain walling with 75mm aluminum capping at base, bronze effect aluminum framed double or triple glazed doors to match.
 - F** - Windows / doors: PPC aluminum framed double or triple glazed units (manufacturer to be agreed).
 - G** - Canopies: Pre-formed metal boxed canopy in bronze metallic finish with hidden structure and integral lighting.
 - H** - Perforated metal balustrade or privacy screen: perforated metal (bronze metallic finish) supported off PPC coated frame with hidden fixings and minimal joints - allow for non-uniform setting out of perforations - details to be agreed.
 - I** - Metal Railing Balustrade: formed from PPC vertical flats (approx 50 x 12mm).
 - J** - Metal Railing Balustrade: formed from PPC vertical flats (approx 50 x 12mm) extending to balcony soffit with metal plate fascia fixed to balcony edge.
 - K** - Precast concrete or stone coping to parapet wall - allow for reinforcement back to structure.
 - L** - Glass balustrade: frameless glass with no visible fixings.
 - M** - Brick work type 4: Green Glazed brickwork, stack bonded to residential entrances

- N** - Hit and miss brickwork wall to basement cycle store - free area to meet ventilation requirements to basement.
- O** - 1.2 m high Fagus sylvatica (beech) instant hedge planted in a double staggered row.
- P** - Reconstituted Stone on fixing ancon bracket to form architrave detail to concierge/supermarket/retail entrances.
- Q** - Aluminium PPC louvred doors/panels to refuse store/car park ramp/fire exits/substation/vent intake or exhaust locations.
- R** - Brick work type 2: Slightly recessed brick wall with stepped brick coursing.
- S** - Close boarded timber fence to meet Acoustic requirements.
- T** - Brick work type 5: Reduced specification / off-shade brick wall forming retaining structure.

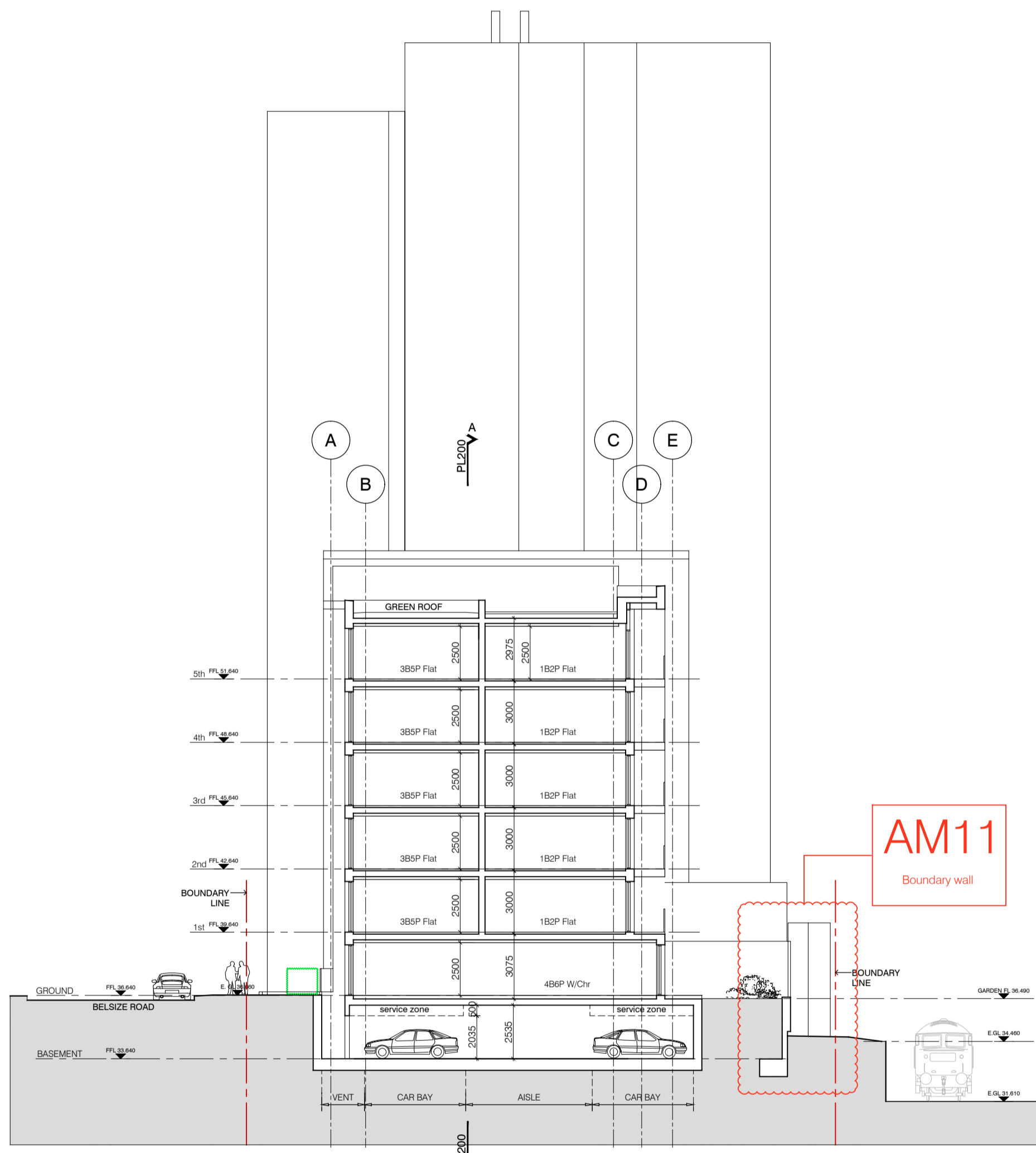


SECTION 73 APPLICATION				
D	04.08.16	Amendment 19 added. Issued to planning	DPD	EN
C	21.06.16	Amendment references added. Material Key updated. Issued to CBRE.	EN	DPD
B	15.04.16	Amendment references added. Material Key updated. Issued to CBRE	DPD	DB
A	18.12.15	Amendment references added. Issued to CBRE	BM	DPD

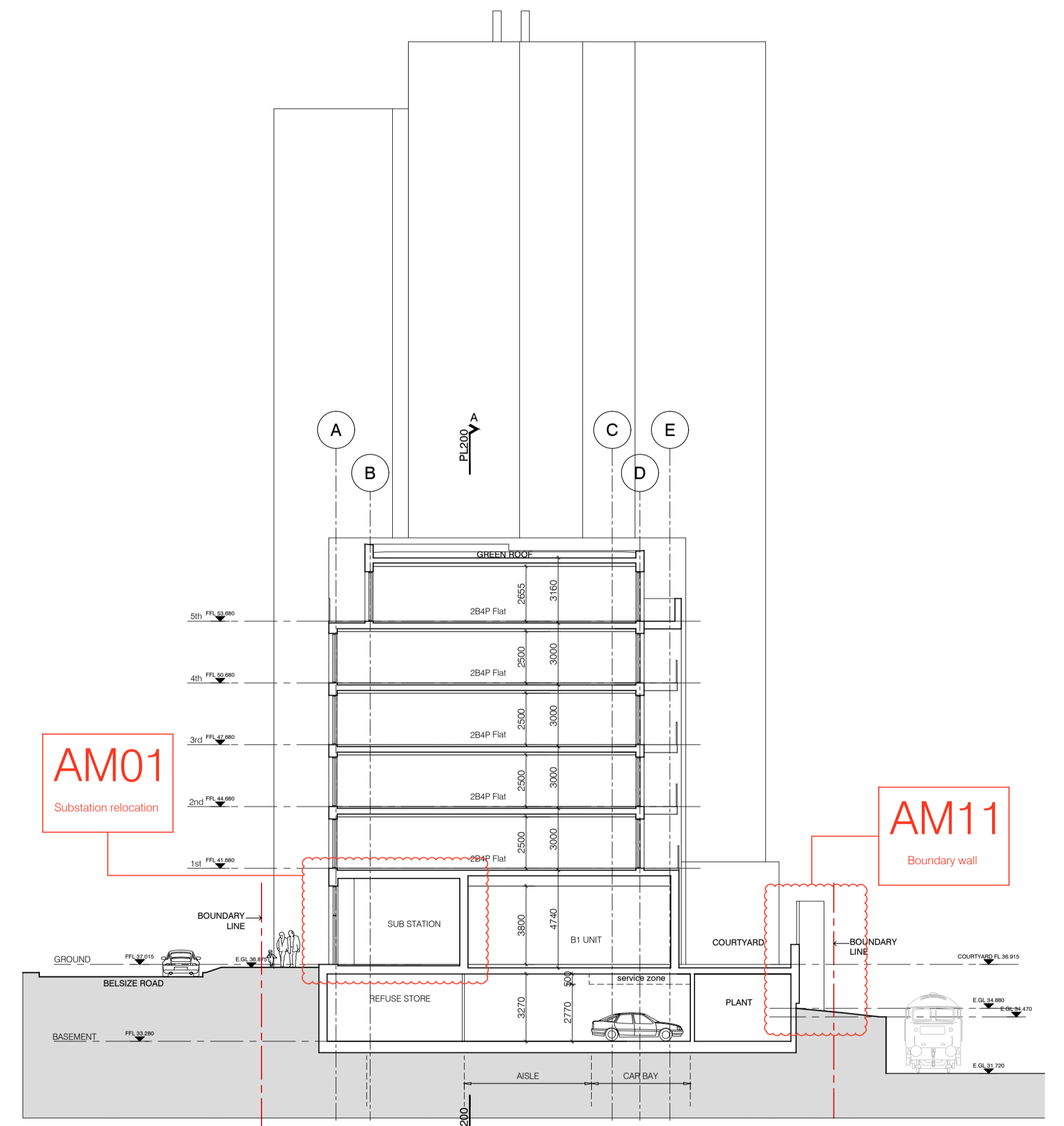
rev.	date	description	dm	aut
PLANNING				
project: ABBEY AREA REGENERATION - PHASE 1 location: 38 Graham Street, London N1 8JX t: 020 7336 7777 w: www.ptea.co.uk f: 020 7336 0770 e: forename.surname@ptea.co.uk				
job no. 12_510		drawn PT	audited DPD	scale 1:200 @ A1
date 12 JUL 13		drawing status		
sheet title: GENERAL ARRANGEMENT 11th, 12th, 13th FLOOR & ROOF PLANS		fig. no. 510_1_PL_105		
rev. D				



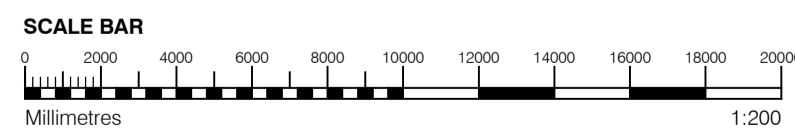
1 SECTION B-B
Through Block F



2 SECTION C-C
Through Block C



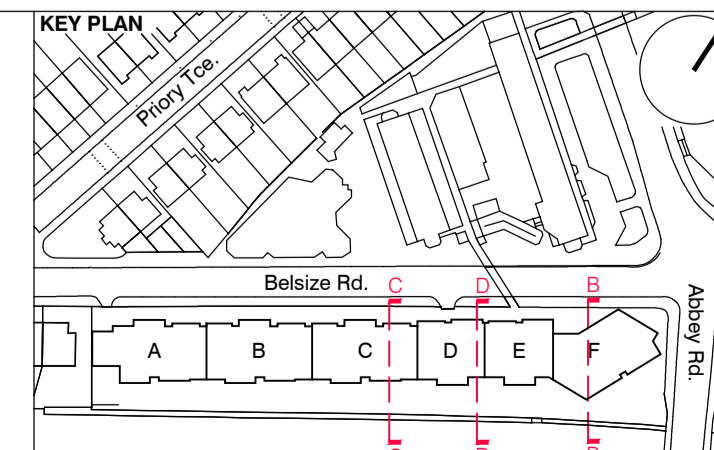
3 SECTION D-D
Through Block D



- GENERAL NOTES**
- This drawing is copyright of PTE architects
 - Use figured dimensions only. DO NOT SCALE.
 - All dimensions are in millimetres unless noted otherwise
 - All levels are in metres above ordnance datum unless noted otherwise
 - This drawing must be read in conjunction with all other relevant drawings and specifications from the Architect and other consultants
- NOTES**
- All setting out to be confirmed on site prior to construction - any discrepancy must be immediately reported to the Architect.

- MATERIAL KEY**
- A** - Brick work type 1: Red Brick, stretcher bond with light colour mortar. Openings to have a deep brick reveal (approx. 190mm unless stated otherwise).
 - B** - Brick work type 2: Reflective blue/purple Brick, stretcher bond with dark gray mortar. Openings to have a deep brick reveal (approx. 190mm unless stated otherwise).
 - C** - Brick work type 3: White glazed brick, stack bonded with white colour mortar, to Block F recessed balconies.
 - D** - Metal panel: bronze effect panels with hidden fixings and minimal joints.

- E** - Shop front frameless glass curtain walling with 75mm aluminum capping at base, bronze effect aluminum framed double or triple glazed doors to match.
- F** - Windows / doors: PPC aluminum framed double or triple glazed units (manufacturer to be agreed).
- G** - Canopies: Pre-formed metal boxed canopy in bronze metallic finish with hidden structure and integral lighting.
- H** - Perforated metal balustrade or privacy screen: perforated metal (bronze metallic finish) supported off PPC coated frame with hidden fixings and minimal joints - allow for non-uniform setting out of perforations - details to be agreed.
- I** - Metal Railing Balustrade: formed from PPC vertical flats (approx 50 x 12mm).
- J** - Metal Railing Balustrade: formed from PPC vertical flats (approx 50 x 12mm) extending to balcony soffit with metal plate fascia fixed to balcony edge.
- K** - Precast concrete or stone coping to parapet wall - allow for reinforcement back to structure.
- L** - Glass balustrade: frameless glass with no visible fixings.
- M** - Brick work type 4: Green Glazed brickwork, stack bonded to residential entrances
- N** - Hit and miss brickwork wall to basement cycle store - free area to meet ventilation requirements to basement.
- O** - 1.2 m high Fagus sylvatica (beech) instant hedge planted in a double staggered row.
- P** - Reconstituted Stone on fixing ancon bracket to form architrave detail to concierge/supermarket/retail entrances.
- Q** - Aluminium PPC louvred doors/panels to refuse store/car park ramp/fire exits/substation/vent intake or exhaust locations.
- R** - Brick work type 2: Slightly recessed brick wall with stepped brick coursing.
- S** - Close boarded timber fence to meet Acoustic requirements.
- T** - Brick work type 5: Reduced specification / off-shade brick wall forming retaining structure.



S73 APPLICATION				
C	21.06.16	Amendment references added. Material Key updated. Issued to planning	EN DPD	
B	15.04.16	Amendment references added. Material Key updated. Issued to CBRE	DPD DB	
A	18.12.15	Amendment references added. Issued to CBRE	BM DPD	
rev.	date	description	dm	aud

PLANNING

Diessiker Wharf
38 Graham Street
London N1 8JX

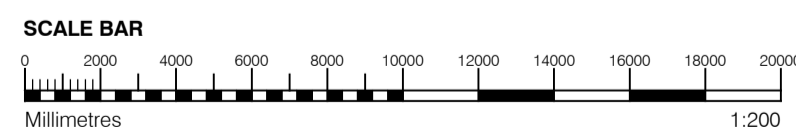
t: 020 7336 7777 w: www.ptea.co.uk
f: 020 7336 0770 e: forename.surname@ptea.co.uk

PROJECT: ABBEY AREA REGENERATION-PHASE 1
JOB NO: 12_510
DRAWN: LG
AUDIT: DPD
SCALE: 1:200@A1
DATE: JUL 13

DESIGN TITLE: GENERAL ARRANGEMENT
SHORT SECTION B-B, C-C & D-D

FIG. NO: 510_1_PL_201
REV: C





GENERAL NOTES

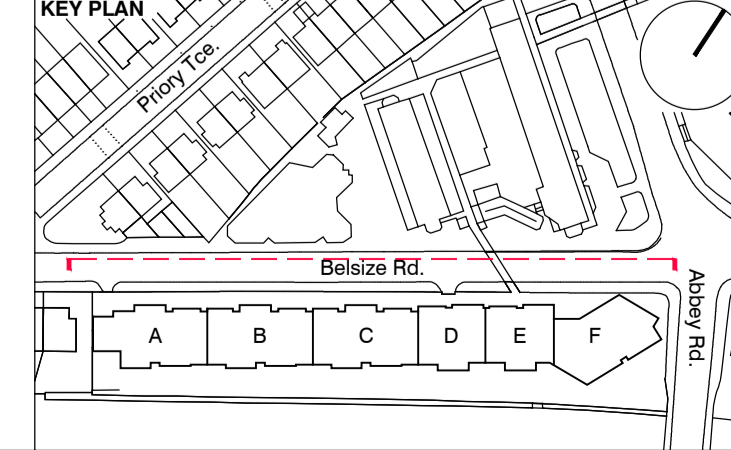
- This drawing is copyright of PTE architects
- Use figured dimensions only. DO NOT SCALE.
- All dimensions are in millimetres unless noted otherwise
- All levels are in metres above Ordnance datum unless noted otherwise
- This drawing must be read in conjunction with all other relevant drawings and specifications from the Architect and other consultants

NOTES

- All setting out to be confirmed on site prior to construction - any discrepancy must be immediately reported to the Architect.

MATERIAL KEY

- A** - Brick work type 1: Red Brick, stretcher bond with light colour mortar. Openings to have a deep brick reveal (approx 190mm unless stated otherwise).
- B** - Brick work type 2: Reflective blue/purple Brick, stretcher bond with dark grey mortar. Openings to have a deep brick reveal (approx 190mm unless stated otherwise).
- C** - Brick work type 3: White glazed brick, stack bonded with white colour mortar, to Block F recessed balconies.
- D** - Metal panel: bronze effect panels with hidden fixings and minimal joints.
- E** - Shop front frameless glass curtain walling with 75mm aluminium capping at base, bronze effect aluminium framed double or triple glazed doors to match.
- F** - Windows / doors: PPC aluminium framed double or triple glazed units (manufacturer to be agreed).
- G** - Canopies: Pre-formed metal boxed canopy in bronze metallic finish with hidden structure and integral lighting.
- H** - Perforated metal balustrade or privacy screen: perforated metal (bronze metallic finish) supported off PPC coated frame with hidden fixings and minimal joints - allow for non-uniform setting out of perforations - details to be agreed.
- I** - Metal Railing Balustrade: formed from PPC vertical flats (approx 50 x 12mm).
- J** - Metal Railing Balustrade: formed from PPC vertical flats (approx 50 x 12mm) extending to balcony soffit with metal plate fascia fixed to balcony edge.
- K** - Precast concrete or stone coping to parapet wall - allow for reinforcement back to structure.
- L** - Glass balustrade: frameless glass with no visible fixings.
- M** - Brick work type 4: Green Glazed brickwork, stack bonded to residential entrances
- N** - Hit and miss brickwork wall to basement cycle store - free area to meet ventilation requirements to basement.
- O** - 1.2 m high Fagus sylvatica (beech) instant hedge planted in a double staggered row.
- P** - Reconstituted Stone on fixing ancon bracket to form architrave detail to concierge/supermarket/retail entrances.
- Q** - Aluminium PPC louvred doors/panels to refuse store/car park ramp/fire exits/substation/vent intake or exhaust locations.
- R** - Brick work type 2: Slightly recessed brick wall with stepped brick coursing.
- S** - Close boarded timber fence to meet Acoustic requirements.
- T** - Brick work type 5: Reduced specification / off-shade brick wall forming retaining structure.



SECTION 73 APPLICATION

rev.	date	description	dm	aut
F	04.08.16	Amendment 19 added. Issued to planning	DPD	EN
E	21.06.16	Amendment references added. Material Key updated. Issued to CBRE	EN	DPD
D	15.04.16	Amendment references added. Material Key updated. Issued to CBRE	DPD	DB
C	18.12.15	Amendment references added. Issued to CBRE	BM	DPD
B	04.10.13	5th floor Windows blocks A-E & FE doors in Block F	BM	DPD
A	02.09.13	Drawing amended and issued to design team for comment.	RL	DPD

PLANNING

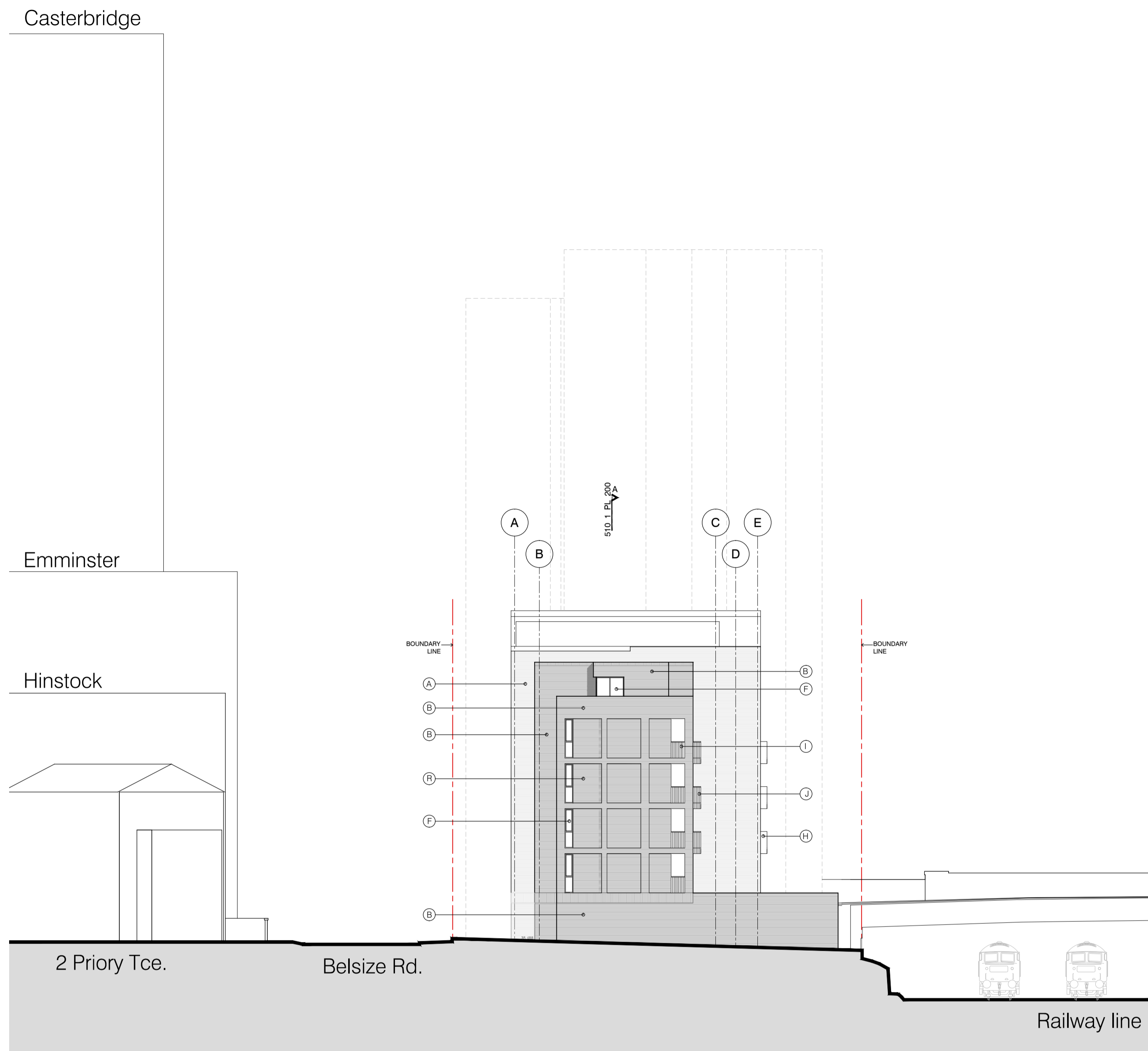
Dispeker Wharf
38 Graham Street
London N1 8JX

t: 020 7336 7777 w: www.ptea.co.uk
f: 020 7336 0770 e: forename.surname@ptea.co.uk

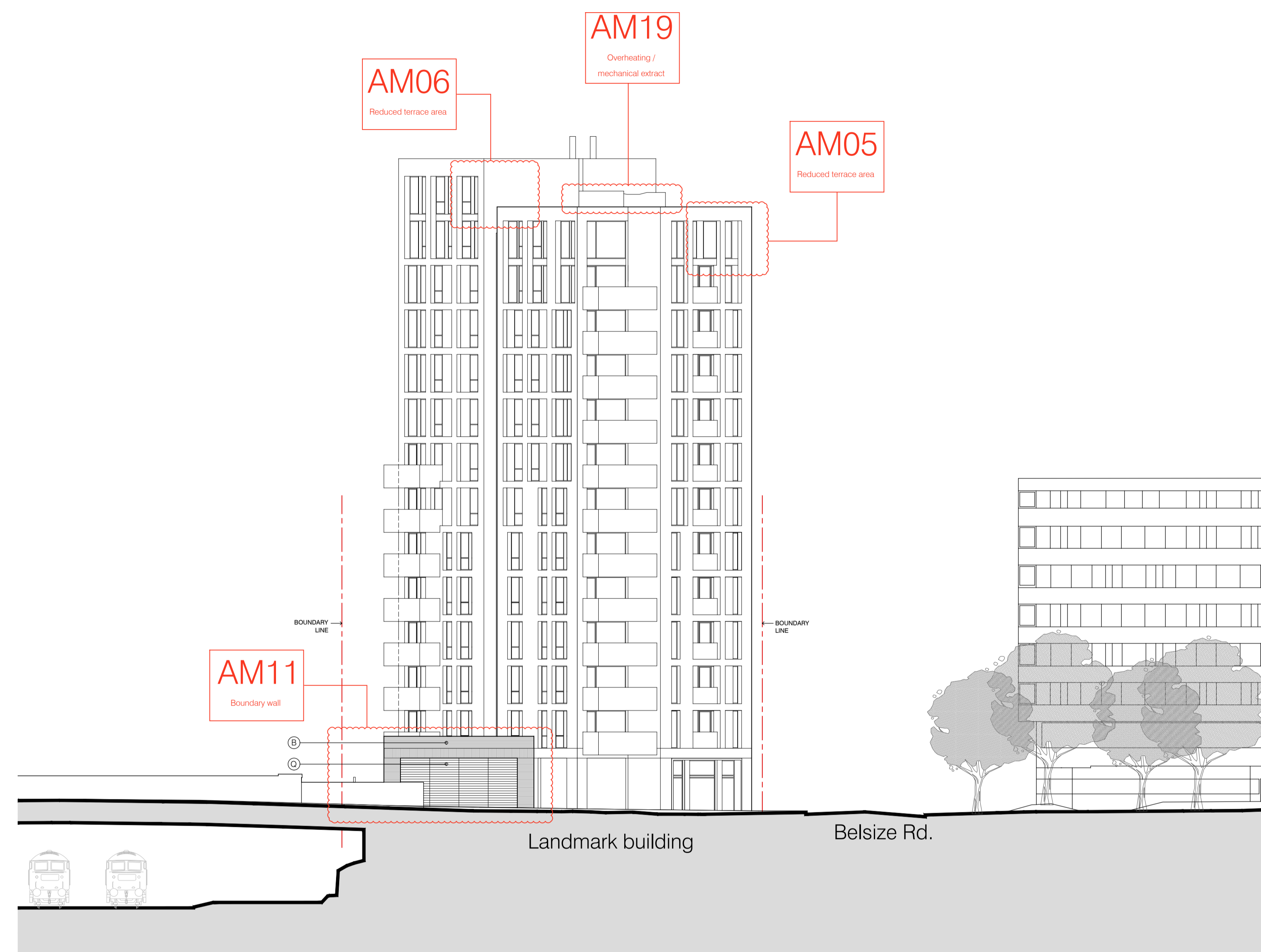
project: ABBEY AREA REGENERATION-PHASE 1
job no: 12_510
drawn: BM
audited: DPD
scale: 1:200@A1
date: JUL 13

drawing title: GENERAL ARRANGEMENT NORTH ELEVATION & NORTH SITE ELEVATION
drawing no: 510_1_PL_300
rev: F

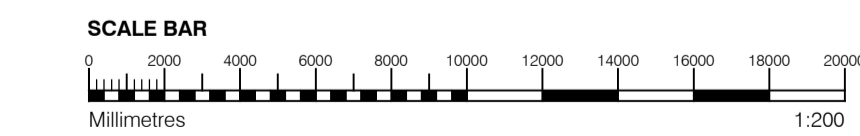




1 EAST ELEVATION
1:200



2 WEST ELEVATION
1:200



GENERAL NOTES

- This drawing is copyright of PTE architects
- Use figured dimensions only. DO NOT SCALE.
- All dimensions are in millimetres unless noted otherwise
- All levels are in metres above ordnance datum unless noted otherwise
- This drawing must be read in conjunction with all other relevant drawings and specifications from the Architect and other consultants

NOTES

- All setting out to be confirmed on site prior to construction - any discrepancy must be immediately reported to the Architect.

MATERIAL KEY

A - Brick work type 1: Red Brick, stretcher bond with light colour mortar. Openings to have a deep brick reveal (approx 190mm unless stated otherwise).

B - Brick work type 2: Reflective blue/purple Brick, stretcher bond with dark grey mortar. Openings to have a deep brick reveal (approx 190mm unless stated otherwise).

C - Brick work type 3: White glazed brick, stack bonded with white colour mortar, to Block F recessed balconies.

D - Metal panel: bronze effect panels with hidden fixings and minimal joints.

E - Shop front frameless glass curtain walling with 75mm aluminum capping at base, bronze effect aluminum framed double or triple glazed doors to match.

F - Windows / doors: PPC aluminum framed double or triple glazed units (manufacturer to be agreed).

G - Canopies: Pre-formed metal boxed canopy in bronze metallic finish with hidden structure and integral lighting.

H - Perforated metal balustrade or privacy screen: perforated metal (bronze metallic finish) supported off PPC coated frame with hidden fixings and minimal joints - allow for non-uniform setting out of perforations - details to be agreed.

I - Metal Railing Balustrade: formed from PPC vertical flats (approx 50 x 12mm).

J - Metal Railing Balustrade: formed from PPC vertical flats (approx 50 x 12mm) extending to balcony soffit with metal plate fascia fixed to balcony edge.

K - Precast concrete or stone coping to parapet wall - allow for reinforcement back to structure.

L - Glass balustrade: frameless glass with no visible fixings.

M - Brick work type 4: Green Glazed brickwork, stack bonded to residential entrances

N - Hit and miss brickwork wall to basement cycle store - free area to meet ventilation requirements to basement.

O - 1.2 m high Fagus sylvatica (beech) instant hedge planted in a double staggered row.

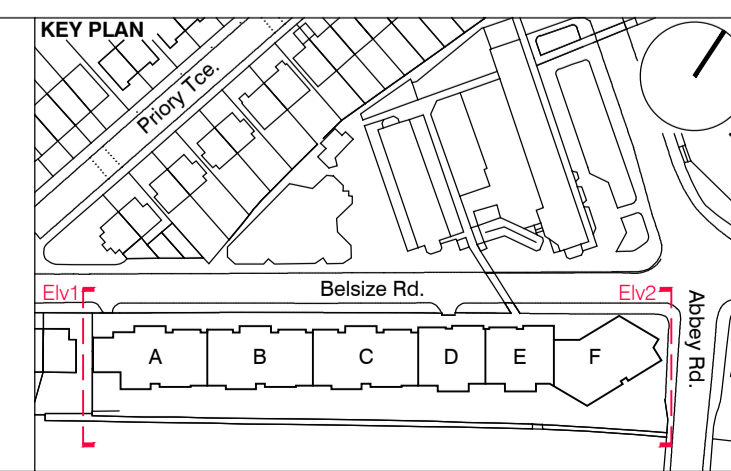
P - Reconstituted Stone on fixing ancon bracket to form architrave detail to concierge/supermarket/retail entrances.

Q - Aluminium PPC louvred doors/panels to refuse store/car park ramp/fire exits/substation/vent intake or exhaust locations.

R - Brick work type 2: Slightly recessed brick wall with stepped brick coursing.

S - Close boarded timber fence to meet Acoustic requirements.

T - Brick work type 5: Reduced specification / off-shade brick wall forming retaining structure.



SECTION 73 APPLICATION				DPD	EN
D	04.08.16	Amendment 19 added. Issued to planning		DPD	EN
C	21.06.16	Amendment references added. Issued to CBRE		DPD	DB
B	15.04.16	Amendment references added. Issued to CBRE		DPD	DB
A	18.12.15	Amendment references added. Issued to CBRE		BM	DPD
rev.	date	description		dm	aut

PLANNING					
Diespeker Wharf 38 Graham Street London N1 8JX					
t: 020 7336 7777		w: www.ptea.co.uk			
f: 020 7336 0770		e: forename.surname@ptea.co.uk			
project	ABBEY AREA REGENERATION-PHASE 1	job no.	12_510	drawn	LG
audited	DPD	scale	1:200@A1	date	JUL 13
drawn by	GENERAL ARRANGEMENT EAST ELEVATION, WEST ELEVATION	fig. no.	510_1_PL_301	rev.	D