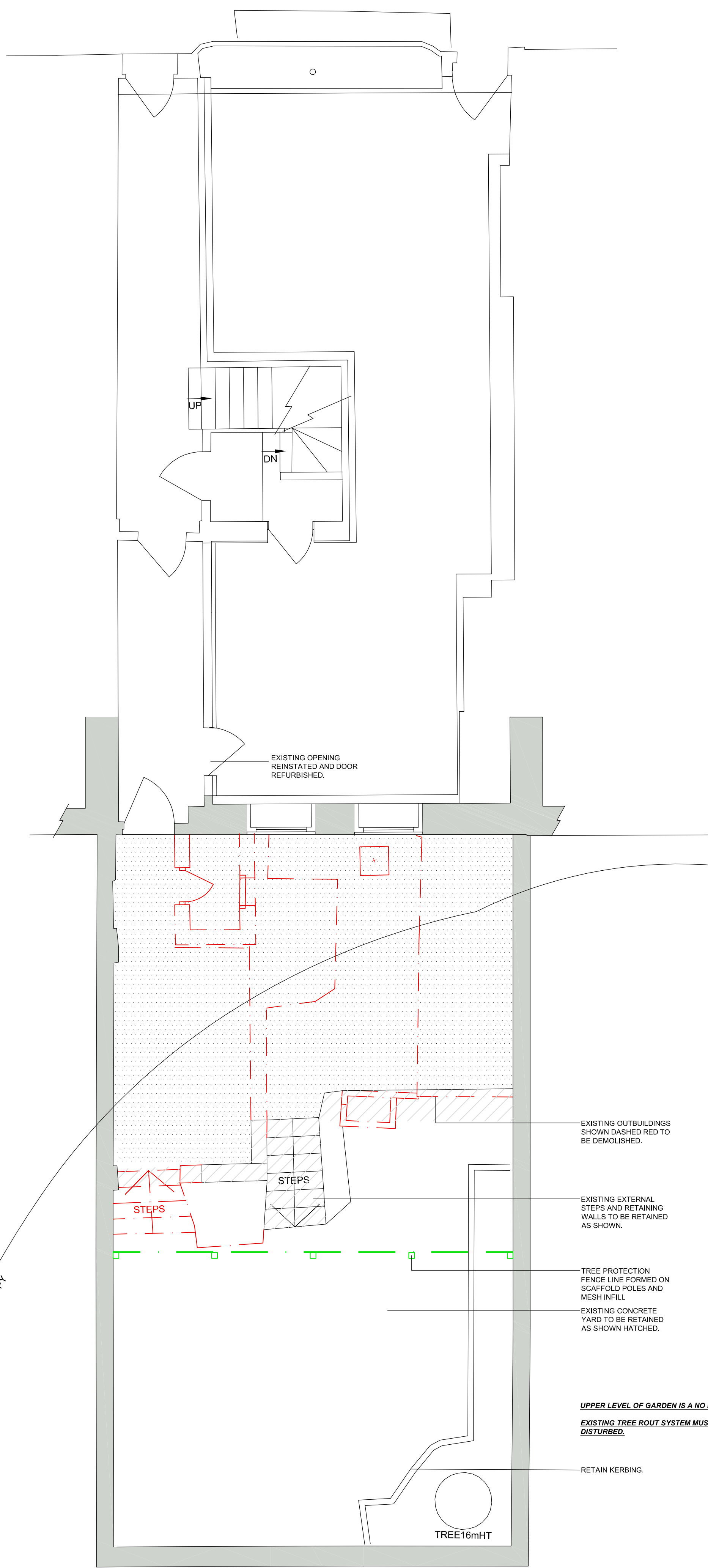
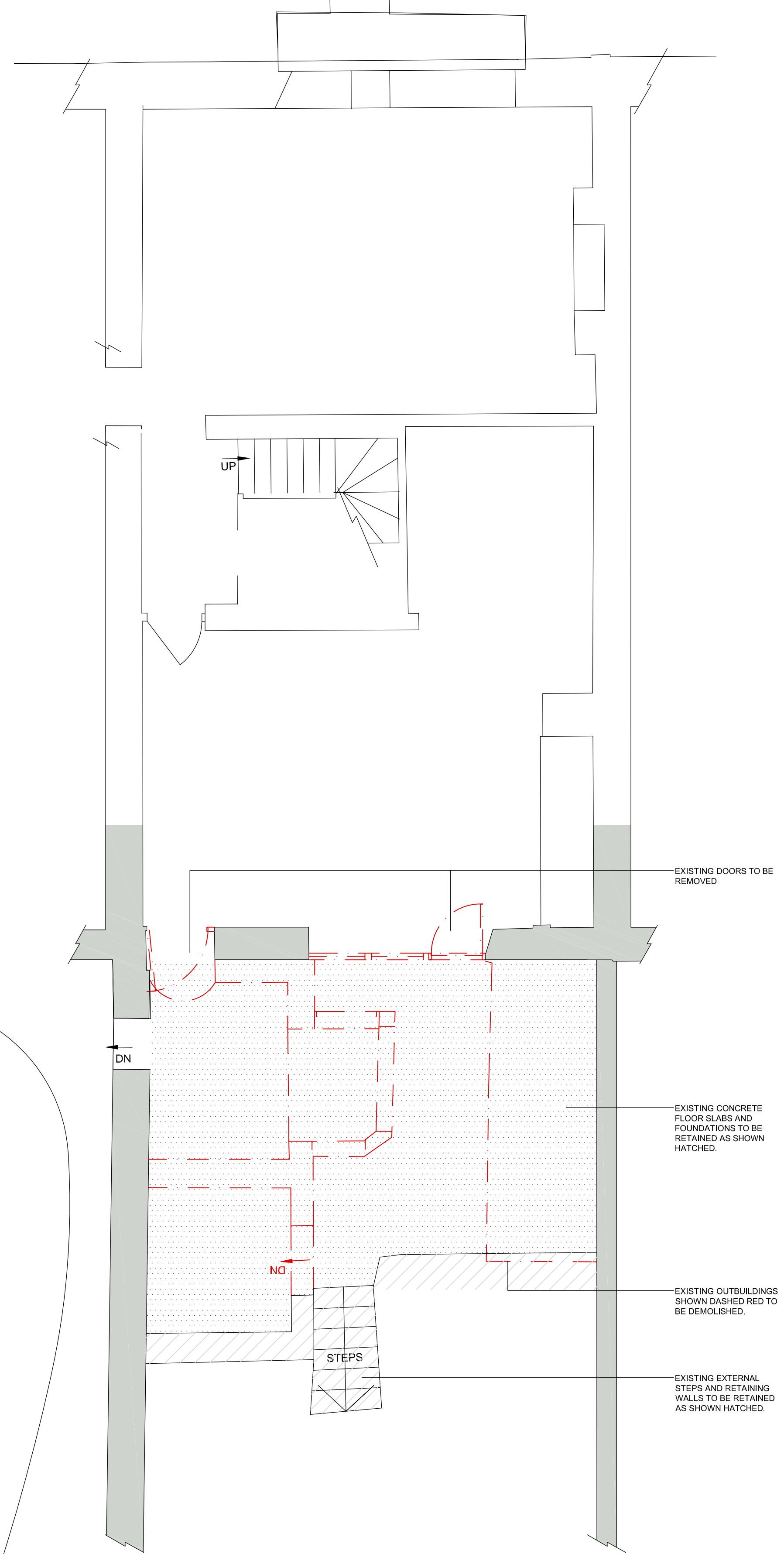


Notes

2. All dimensions are in millimeters unless noted otherwise
3. Not for construction unless otherwise shown
4. When appropriate, this drawing to be read in conjunction with project specific Designers Risk Assessments, produced in accordance with requirements of Regulation 13 of the Construction (Design and Management) Regulations 1994
5. The design shown on this drawing is the property of SDA and is not to be used or the drawing copied, communicated or disclosed, in whole or in part, except in accordance with a contract, licence or agreement in writing with SDA



GROUND FLOOR



BASEMENT FLOOR

C	17.08.16	EXISTING RETAINING WALLS/STEPS RETAINED AND TREE KERBING RETAINED.	RVF	MF
B	29.06.16	NEW STAIR RELOCATED TO WITHIN EXTENSION.	RVF	MF
A	17.11.15	GENERAL UPDATES	WH	BC
REV.	DATE	DESCRIPTION	DRN	CKD.

**SDA ARCHITECTS & DESIGNERS**

VICTORIA FOUNDRY MARSHALL STREET LEEDS LS11 9EH  
 T: +44 (0)113 288 1000 F: +44 (0)113 288 1001  
 E: mail@sdapartnership.com www.sdapartnership.com  
 LEEDS LONDON CALIFORNIA

PROJECT  
**ARTEMIDE SHOWROOM**  
 106 GREAT RUSSELL STREET  
 LONDON  
 WC1B 3NB

TITLE  
**EXISTING / DEMOLITION BASEMENT & GROUND FLOOR PLANS**

STAGE  
**PLANNING**

JOB No. AAY0073	DWG No. A(10)-101	REV. C
SCALE 1:50 @ A1	DATE OCT. 2015	
DRAWN MC	CHECKED BC	

BSI REGISTERED FS 56715 UKAS QUALITY MANAGEMENT