

Bottom-hung windows with safety restrictors to ensure there is no access to front terrace roof

bricks at top and bottom of external window opening to mask window frame and match approved front elevation (see detail)

brick reveal

cill brick

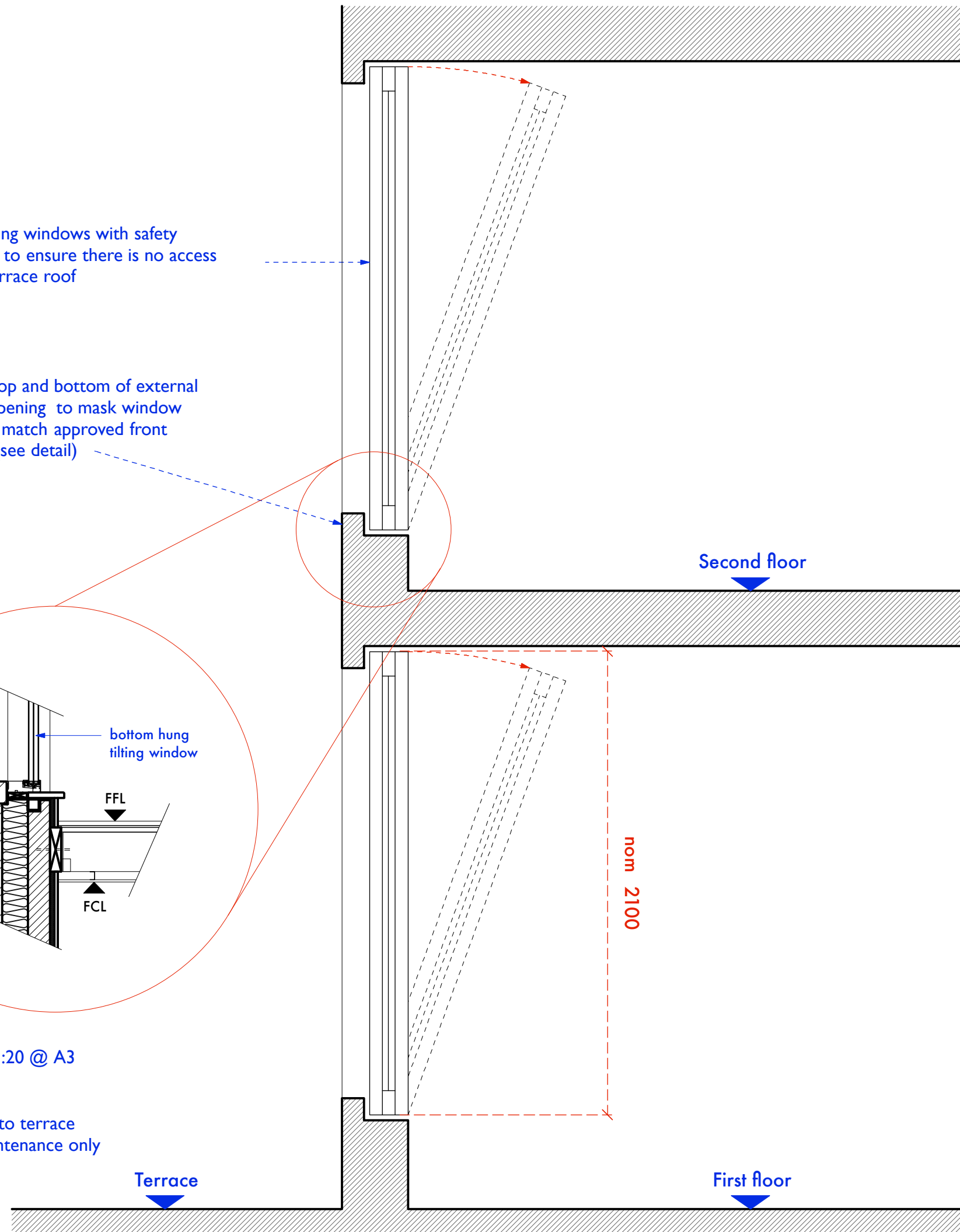
bottom hung tilting window

FFL

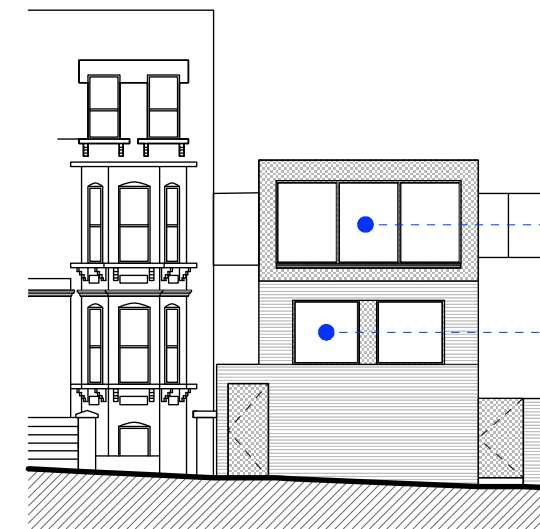
FCL

DETAIL  
SCALE 1:20 @ A3

Access to terrace  
for maintenance only



Example of proposed bottom-hung window to be used in first and second floor front-facing bedrooms  
(Note: reversible for cleaning)



Approved front elevation

SECOND FLOOR BEDROOM WINDOWS  
PLANNING ELEVATION SHOWS  
SINGLE PANE WINDOWS  
POTENTIAL FOR AIR INTAKE BELOW  
AND OPENABLE ROOFLIGHTS TO  
AFFORD CROSS VENTILATION

FIRST FLOOR BEDROOM WINDOWS  
PLANNING ELEVATION SHOWS  
SINGLE PANE WINDOWS

DO NOT SCALE THIS DRAWING WRITTEN DIMENSIONS ONLY TO BE USED ALL DIMENSIONS ARE IN MILLIMETRES ALL DIMENSIONS TO BE VERIFIED ON SITE ANY INCONSISTENCIES TO BE REPORTED TO THE ARCHITECT IMMEDIATELY	Job No <b>7155</b>	<b>p-ad</b> 192D Compden Hill Road, Notting Hill Gate, London, W8 7TH t: 0208-4590172 e: info@p-ad.com.co.uk	<b>p-ad</b>
	<b>FOR CONSTRUCTION</b>		
	87-93 Kingsgate Road, London, NW6 4LA	Title Drawn by SG	TYPICAL WINDOW DETAILS Scale 1:20 @ A3 Number 7155/ 2.3