

22 Gordon Street  
Plant Screen Update  
16 August 2016

# Hawkins Brown

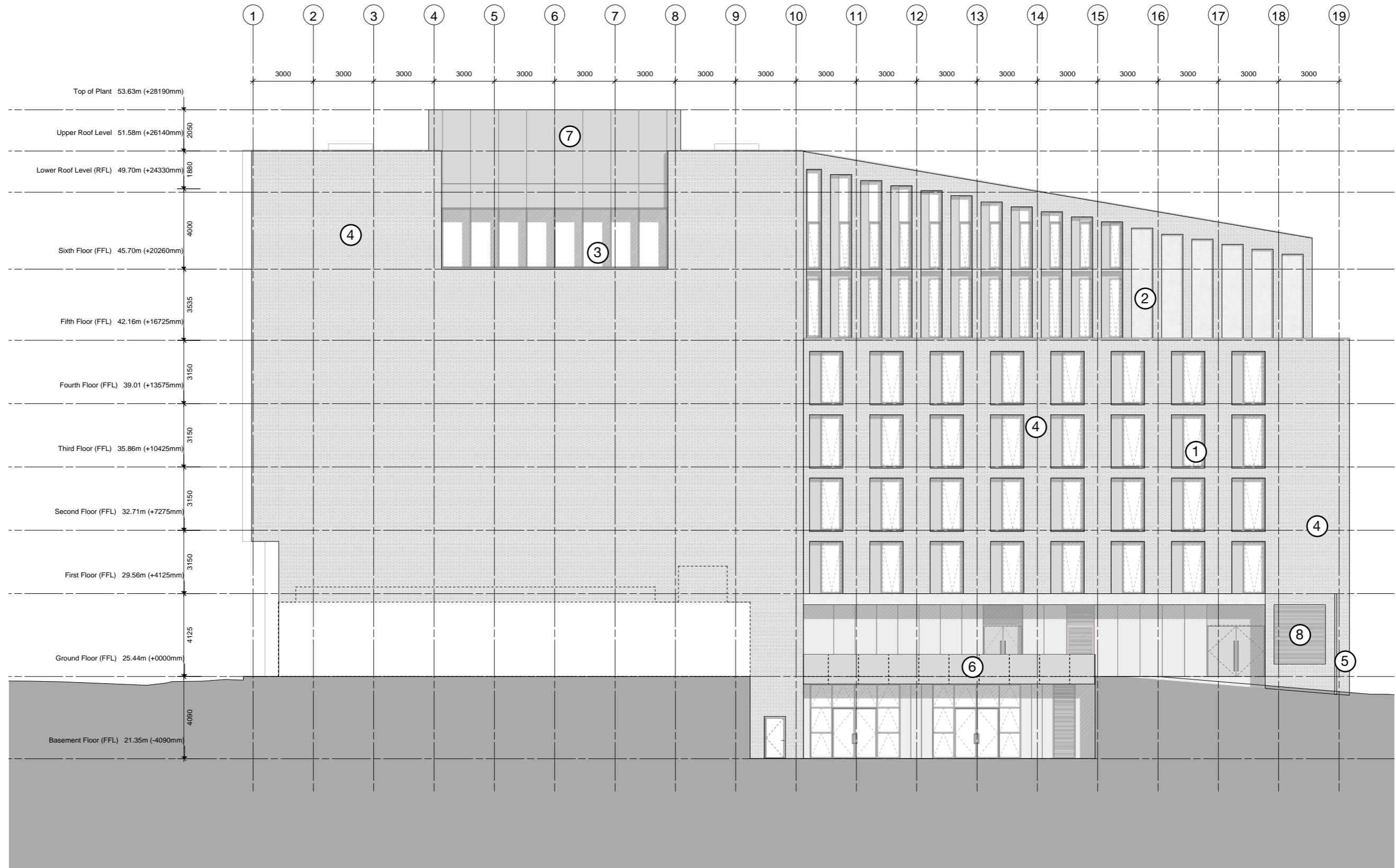




**1** Consented Drawing  
**1.1** South Elevation

- ① Framed glazing (timber internal / anodised aluminium 541 external)
- ② Flush cladding panel (GRC)
- ③ Fin attachment (anodised aluminium 543) and curtain walling
- ④ Masonry (waterstruck Janinhoff facing brick)

- ⑤ Timber Gate
- ⑥ Metal balustrade (Anodised aluminium 543)
- ⑦ Perforated plant screen (Anodised aluminium 543)
- ⑧ Louvred screen (Anodised aluminium 541)





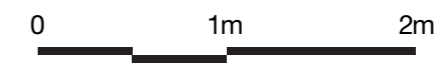
**1** Consented Drawing  
1.2 Plant Screen Elevation

① Fire-rated curtain walling

③ Brickwork facing

② Anodised aluminium (Anolok 543) fin attachments

④ Perforated Anodised aluminium (Anolok 543) plant screen



1:20 @ A1  
1:40 @ A3



# 2 Plant Screen Construction Drawings

## 2.1 Plant Screen Scope

**MATERIALS:**

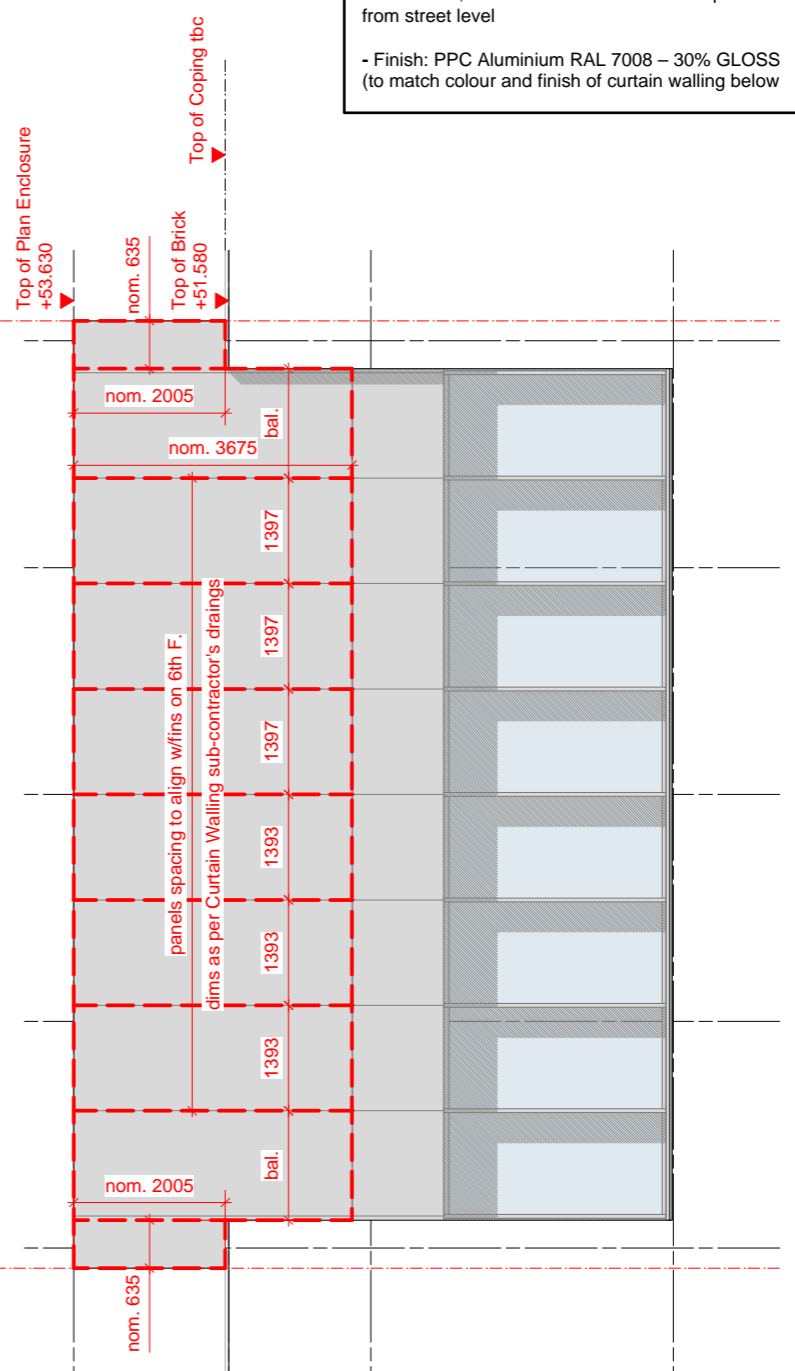
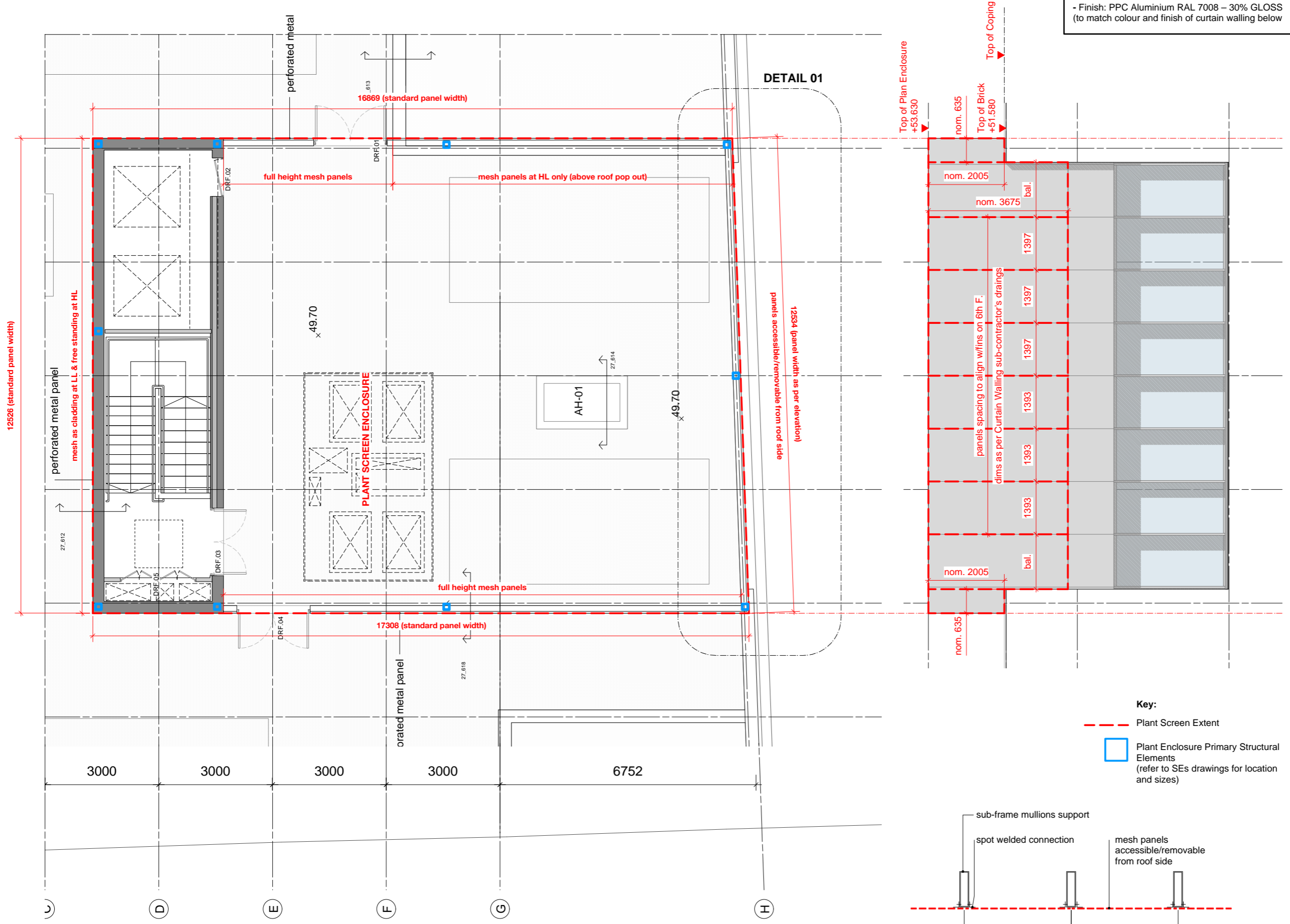
- Plant screen consists of panels of expanded metal mesh, orientated to obscure view of plant from street level
- Finish: PPC Aluminium RAL 7008 – 30% GLOSS (to match colour and finish of curtain walling below)

Copyright Hawkins Brown Architects LLP

No implied license exists. This drawing should not be used to calculate areas for the purposes of valuation. Do not scale this drawing. All dimensions to be checked on site by the contractor and such dimensions to be their responsibility. All work must comply with relevant British Standards and Building Regulations requirements. Drawing errors and omissions to be reported to the architect.

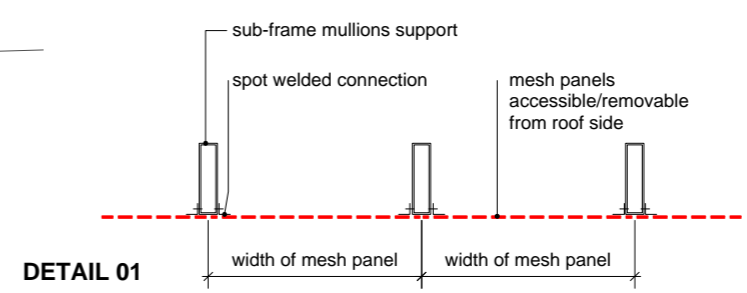
Revisions

|       |          |                               |
|-------|----------|-------------------------------|
| Rev.1 | 08.01.16 | First Issue                   |
| Rev.2 | 20.01.16 | Re-issued with amendments     |
| Rev.3 | 15.08.16 | Issued for planning condition |



**Key:**

- - - Plant Screen Extent
- Plant Enclosure Primary Structural Elements (refer to SEs drawings for location and sizes)



**Drawings to be read in conjunction with:**

- Architectural Technical Reference Sheet (TRS)
- Architectural specification
- Structural Engineer's drawings and specifications
- Mechanical and Electrical Engineer's drawings and specifications
- Setting-Out drawings 22 series 400 to 408

**Hawkins\Brown**

159 St John Street  
London  
EC1V 4QJ  
020 7336 8030t

mail@hawkinsbrown.com  
www.hawkinsbrown.com

Project  
**Wates House**  
22 Gordon Street  
University College London

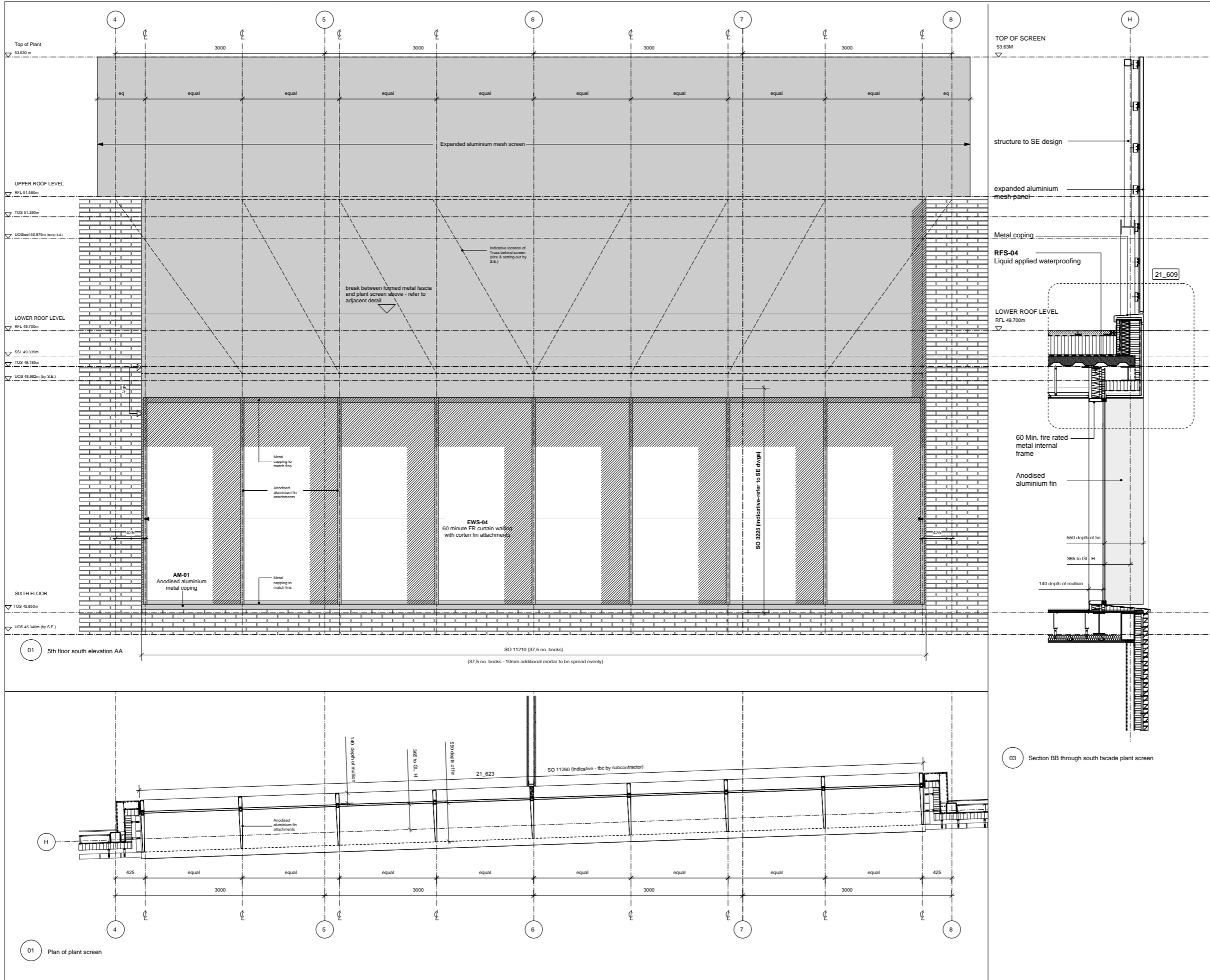
Drawing  
**Plant Floor Plan**  
Proposed Plant Screen Enclosure

|                |              |
|----------------|--------------|
| Scale: A1 (A3) | Date         |
| 1:100 (1:200)  | January 2016 |
| Drawn by       | Checked by   |
| DS             | TN           |
| Job Number     | Status       |
| 1410           | Information  |

Drawing No. & Revision  
**1410\_SK\_481 Rev.3** 4

# 2 Plant Screen Construction Drawings

## 2.2 South Elevation Assembly

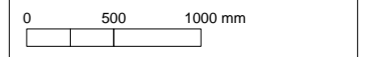


Copyright Hawkins Brown Architects LLP  
 No implied license exists. This drawing should not be used to calculate areas for the purposes of valuation. Do not scale this drawing. All dimensions to be checked on site by the contractor and such dimensions to be their responsibility. All work must comply with relevant British Standards and Building Regulations requirements. Drawing errors and omissions to be reported to the architect.

Revisions

**Drawings to be read in conjunction with:**

- Architectural Technical Reference Sheet (TRS)
- Architectural specification
- Structural Engineer's drawings and specifications
- Mechanical and Electrical Engineer's drawings and specifications



@A1

**HawkinsBrown**

159 St John Street London EC1V 4QJ 020 7336 8030t  
 mail@hawkinsbrown.com www.hawkinsbrown.com

Project  
**Wates House**  
 22 Gordon Street  
 University College London

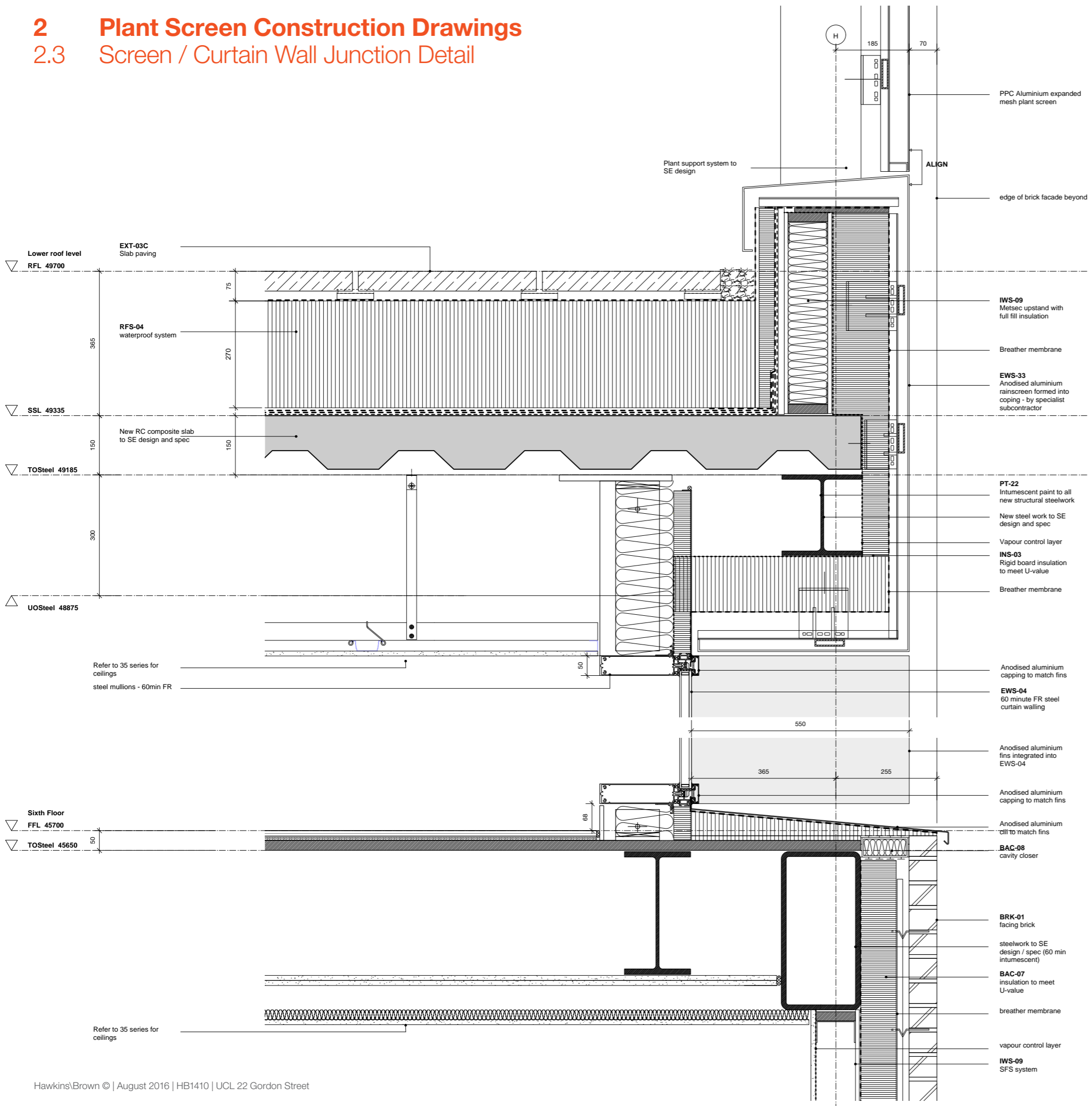
Drawing  
**Assembly Drawings**  
 Level 06 South Elevation

|                 |              |
|-----------------|--------------|
| Scale : A1 (A3) | Date         |
| 1:25 (1:50)     | Aug 2016     |
| Drawn by        | Checked by   |
| TN              | EM           |
| Job Number      | Status       |
| 1410            | Construction |

Drawing No. & Revision  
 1410\_SK\_527

# 2 Plant Screen Construction Drawings

## 2.3 Screen / Curtain Wall Junction Detail



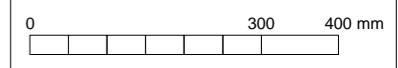
**MATERIALS:**

- Plant screen consists of panels of expanded metal mesh, orientated to obscure view of plant from street level
- Finish: PPC Aluminium RAL 7008 – 30% GLOSS (to match colour and finish of curtain walling below)

Copyright Hawkins Brown Architects LLP

No implied license exists. This drawing should not be used to calculate areas for the purposes of valuation. Do not scale this drawing. All dimensions to be checked on site by the contractor and such dimensions to be their responsibility. All work must comply with relevant British Standards and Building Regulations requirements. Drawing errors and omissions to be reported to the architect.

Revisions



@A1

**Hawkins\Brown**

159 St John Street London EC1V 4QJ 020 7336 8030t

mail@hawkinsbrown.com www.hawkinsbrown.com

Project

**Wates House**  
22 Gordon Street  
University College London

Drawing

**Plant Screen/ Soffit Junction Detail**

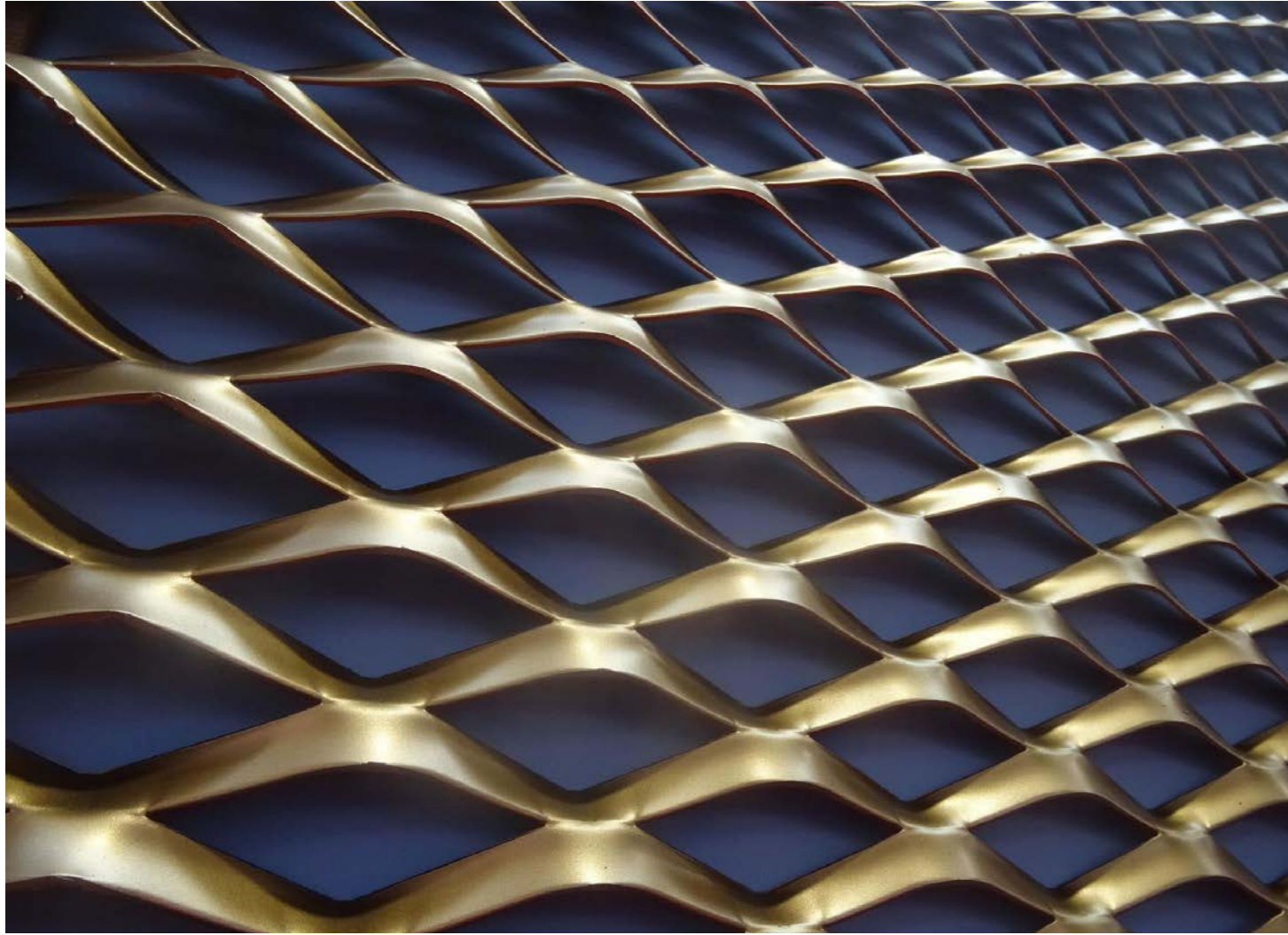
|                 |              |
|-----------------|--------------|
| Scale : A1 (A3) | Date         |
| 1:5 (1:10)      | Aug 2016     |
| Drawn by        | Checked by   |
| TN              | EM           |
| Job Number      | Status       |
| 1410            | Construction |

Drawing No. & Revision

1410\_SK\_528 6



### 3 Materials



example of expanded metal mesh  
note - to be orientated 180deg to obscure view of plant from street level



indicative view of plant screen on south elevation  
PPC Expanded aluminium mesh - RAL 7008 - 30% gloss

# Contact

**AJ100 Practice of the Year 2016**  
Winner

**London\**  
159 St John Street  
EC1V 4QJ  
+44 (0)20 7336 8030  
mail@hawkinsbrown.com

**Manchester\**  
3C Tariff Street  
M1 2FF  
+44 (0)161 641 5522  
mail@hawkinsbrown.com

**hawkinsbrown.com**