

Data Source: London Borough of Camden, 2010

Coordinate System:
British National Grid
GCS_OSGB_1936

Legend

- █ London Borough of Camden
- █ Surface water
- █ Railway Lines
- █ A Roads



Scale at A3: 1:30,000

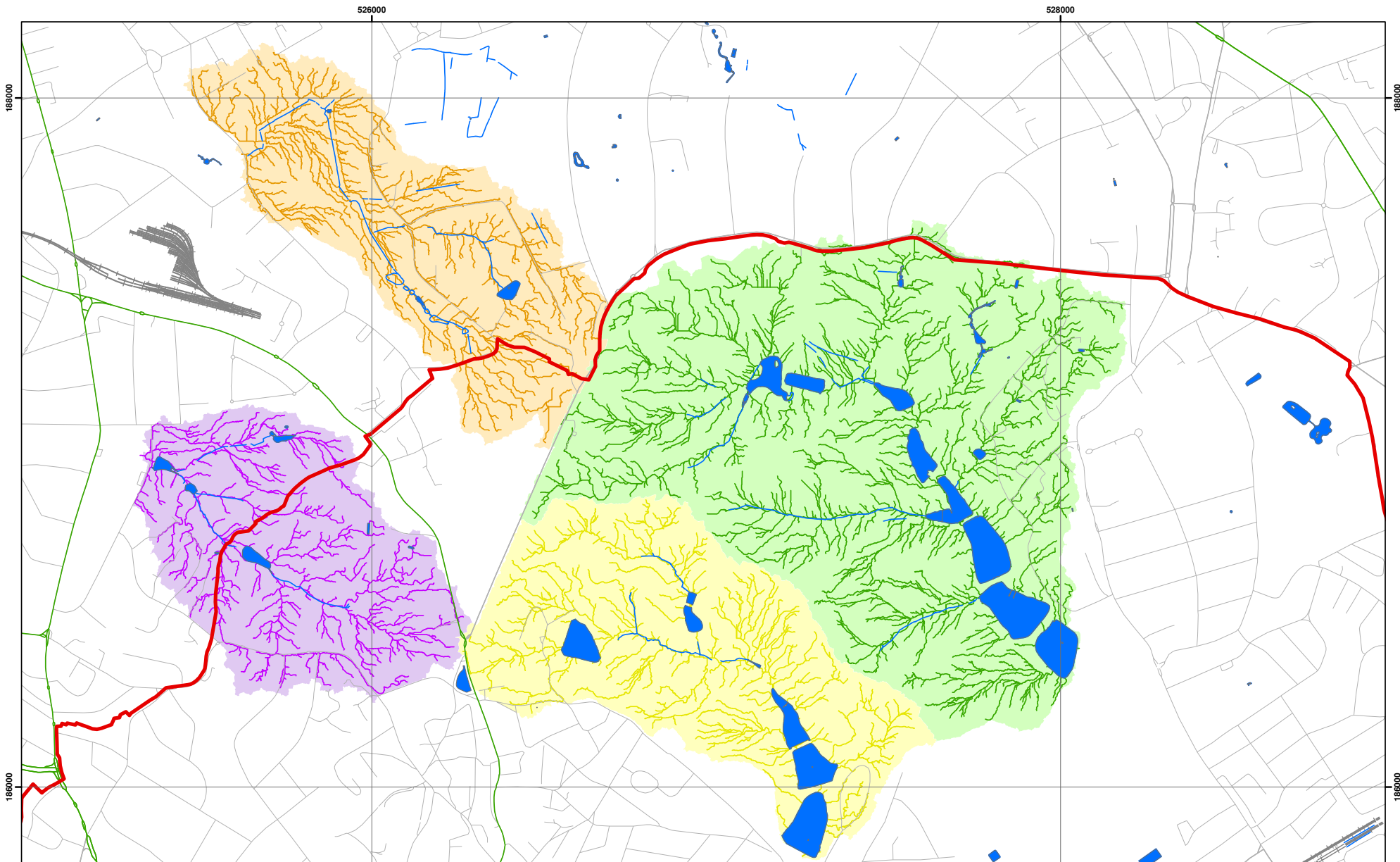


**Camden Geological, Hydrogeological
and Hydrological Study**

Camden Surface Water Features

213923

FIGURE **12**



(No 10 Downside Crescent just off map boundary to south)

Catchments and Drainage after Haycock, 2010



Scale at A3: 1:10,000

Coordinate System:
British National Grid
GCS_OSGB_1936

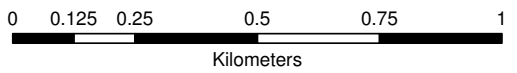
Legend

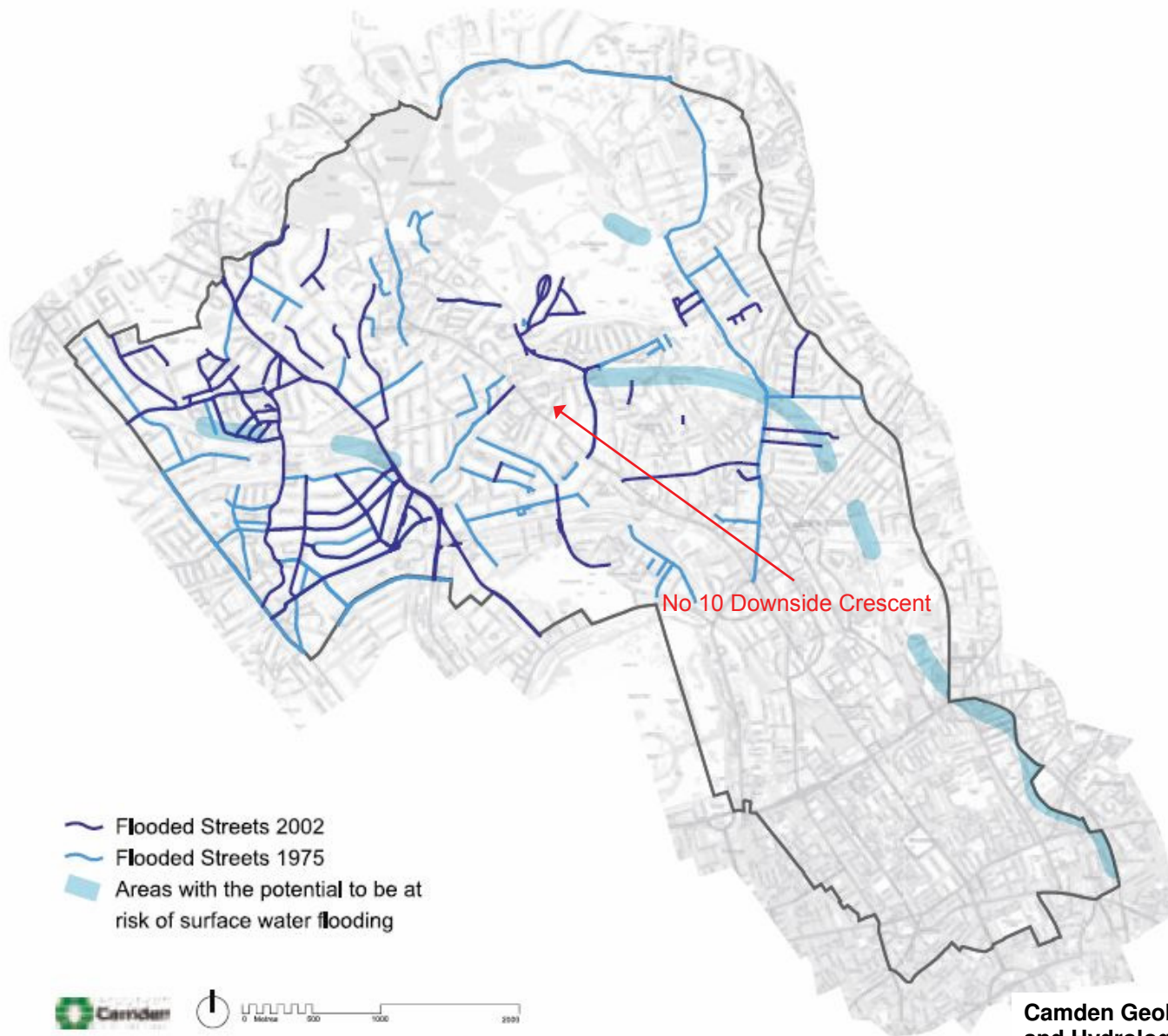
- ▭ London Borough of Camden
- Surface Water
- Railway Lines
- A Roads
- ▭ Highgate Chain Catchment
- ▭ Golders Hill Chain Catchment
- ▭ Hampstead Chain Catchment
- ▭ Hampstead Heath Extension Chain Catchment




**Camden Geological, Hydrogeological
and Hydrological Study**
Hampstead Heath Surface Water
Catchments and Drainage

213923

FIGURE **14**





-  Flooded Streets 2002
-  Flooded Streets 1975
-  Areas with the potential to be at risk of surface water flooding

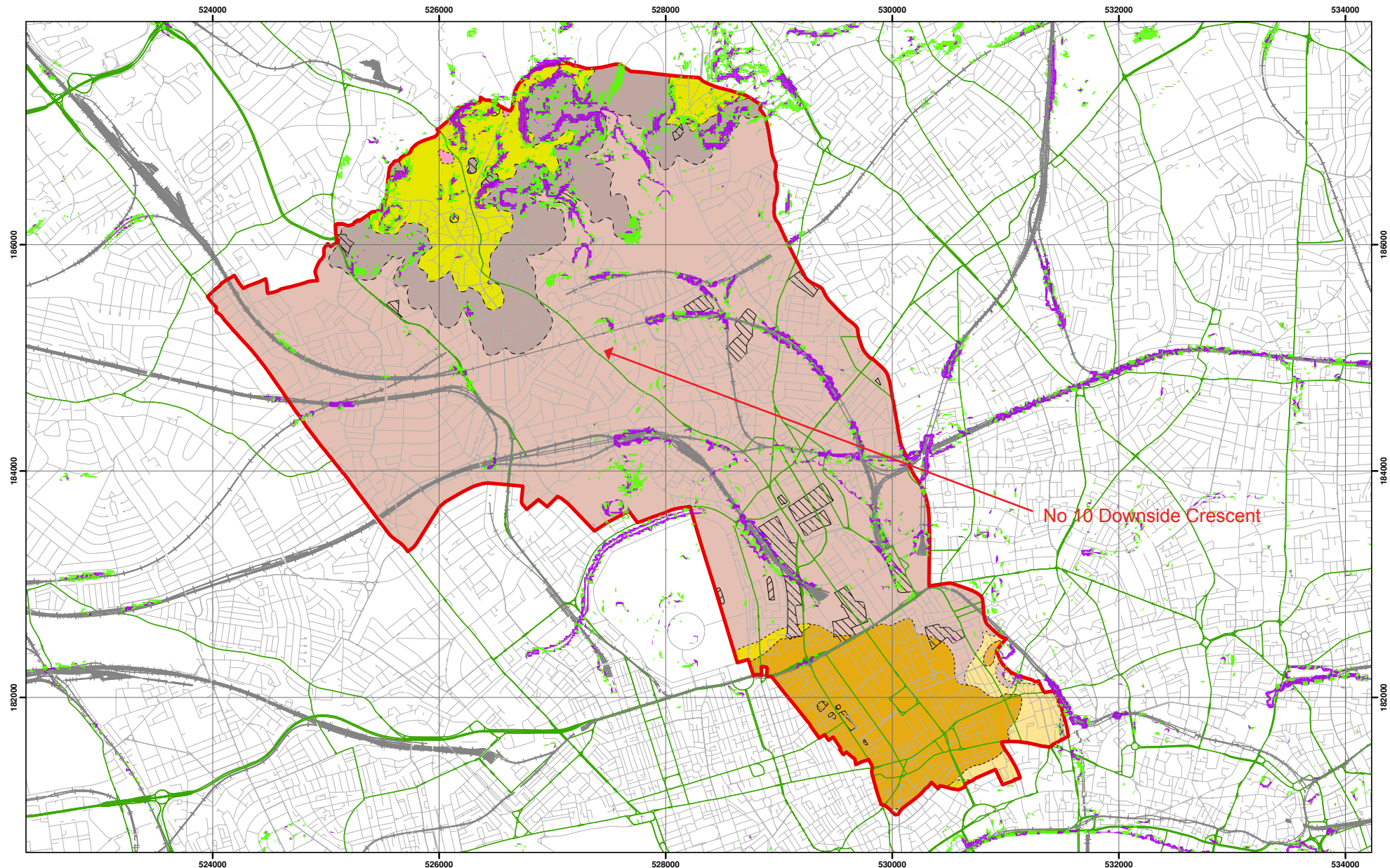


This map is based on Ordnance Survey Material with the permission of Ordnance Survey on behalf of the Controller of Her Majesty's Stationary Office. Unauthorised reproduction infringes Crown copyright and may lead to prosecution or civil proceedings. Licence number LA100019726, year 2008.

**Camden Geological, Hydrogeological and Hydrological Study
Flood Map**

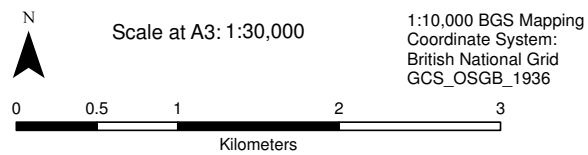
213923

FIGURE 15



No 10 Downside Crescent

Slope Angles calculated from Digital Terrain Model Provided By Camden Borough Council



Legend		BGS 1:10K Artificial Ground		BGS 1:10K Drift Geology		BGS 1:10K Solid Geology	
Slope	0° - 7°	MADE GROUND	ALLUVIUM	BAGSHOT FORMATION	CLAYGATE MEMBER	LONDON BOROUGH OF CAMDEN	
	7° - 10°	WORKED GROUND	HACKNEY GRAVEL FORMATION	CLAYGATE MEMBER	LAMBETH GROUP		
	> 10°		LANGLEY SILT FORMATION	LAMBETH GROUP	LONDON CLAY FORMATION		
			LYNCH HILL GRAVEL FORMATION	LONDON CLAY FORMATION			
			STANMORE GRAVEL FORMATION				

Camden Geological, Hydrogeological and Hydrological Study
Slope Angle Map

213923

FIGURE

16

NB. Geological boundaries are largely indicative based on available geological mapping data