

THIS DRAWING IS COPYRIGHT OF DRMM ARCHITECTS. THE ORIGINAL HARD COPY OF THIS DRAWING HAS BEEN EXECUTED TO SCALE AND IS BASED ON AVAILABLE SURVEY INFORMATION. RESPONSIBILITY FOR THE ACCURACY OF THE INFORMATION SHOWN ON THIS DRAWING IS SOLELY THAT OF DRMM ARCHITECTS. DRMM ARCHITECTS MAKES NO REPRESENTATION AS TO THE ACCURACY OF THE INFORMATION SHOWN ON THIS DRAWING. DRMM ARCHITECTS WILL NOT BE RESPONSIBLE FOR ANY CONSEQUENCES ARISING FROM THE USE OF THIS DRAWING. THE DESIGN OF ALL STRUCTURAL & SERVICE ELEMENTS MUST ALWAYS BE CHECKED AGAINST THE RELEVANT ENGINEERS' DRAWINGS AND CONDITIONS OF DISCREPANCIES BETWEEN DRAWING INFORMATION SHOULD BE BROUGHT TO THE ATTENTION OF THE CONTRACT ADMINISTRATOR. CAM REGISTER FLAGGED HAS ISSUES RELATING TO CONSTRUCTION DESIGN AND DRAWING TO BE ADDRESSED DURING DESIGN DEVELOPMENT TO BE BOUND IN CONNECTION WITH DESIGN RISK REGISTER AND RESidual RISK REGISTER. ALL INTERNAL LAYOUTS ARE INDICATIVE ONLY.

FAÇADE MATERIALS

- A** UNITSISED FRAMELESS CURTAIN WALLING SYSTEM WITH CIRCA 2000 DEEP GLASS RAINSCREEN FIXED TO OUTSIDE. RAL 9011 STEEL BLUE CERAMIC FRIT TO REAR (FACE 2) OF RAINSCREEN GLASS. GLASS REVEALS AROUND EDGES (TOP, SIDES AND SOFFITS) OF OVERALL RAINSCREEN ZONE TO MATCH
- B** UNITSISED FRAMELESS GLASS CURTAIN WALLING SYSTEM WITH EXTRA CLEAR GLASS.
- C** UNITSISED FRAMELESS GLASS CURTAIN WALLING SYSTEM WITH EXTRA CLEAR GLASS OVER OPAQUE ELEMENTS. SILVER CERAMIC FRIT TO FACE 4
- D** UNITSISED FRAMELESS CURTAIN WALLING SYSTEM, DGG WITH EXTRA CLEAR GLASS OVER BESPOKE SILVER PATTERNED CERAMIC FRIT TO FACE 2 AND SOLID SILVER CERAMIC FRIT TO FACE 4 (BOTH TO MATCH C). PATTERN ON FACE 2 TO REFLECT 'DNA' DESIGN OF SOLAR SHADING SCREENS
- E** FRAMELESS OUTWARD OPENING TOP HUNG WINDOW WITH EXTRA CLEAR GLASS. TRANSOM AND FIXED GLAZED LOWER PANEL
- F** RECESSED INWARD OPENING SIDE VERTICALLY HUNG WINDOW WITH EXTERNAL GLAZED JULIETTE BALUSTRADE AND SATIN ANODISED ALUMINIUM CAPPING. REVEALS FROM RAL 9011 (STEEL BLUE) GLASS TO MATCH FINISH OF A. (BLUE/BLACK ANODISED UA150-2 FRAMES EXTERNALLY) HEAD REVEAL FORMED WITH BLUE/BLACK ANODISED LOUVRE (UA150-2)
- G** SILVER METAL STANDING SEAM ROOF INCLUDING HIDDEN GUTTERS (SIMILAR TO THE ROOF COLOUR OF FRANCIS CRICK INSTITUTE)
- H** SATIN ANODISED ALUMINIUM (MECHANICAL/ELECTRICAL MOTORISED) SLIDING SOLAR SHADING SCREENS WITH BESPOKE 'DNA' SAMPLING PERFORATED PATTERN ON DUAL TRACK (UA NATURAL 100A)
- J** EXTERNAL VERTICALLY CANTILEVERED LOW IRON GLASS BALUSTRADE WITH SATIN ANODISED CAPPING TO BALCONIES (1200mm HIGH)
- K** INTERNAL LOW IRON GLASS JULIETTE BALUSTRADE WITH SILVER SATIN ANODISED CAPPING TO SLIDING WINDOWS
- L** FULL HEIGHT FRAMELESS CURTAIN WALLING SYSTEM WITH T-SECTION STEEL MILLION STICKS & CLEAR LOW IRON GLASS AND ANTI-REFLECTIVE COATING. INTEGRATED FRAMELESS DOORS TO GROUND FLOOR INCLUDING AUTOMATIC ACCESS CONTROLLED SLIDING DOOR TO RESIDENTS' LOBBY WITH MATCHING GLASS. BESPOKE GLASS MANIFESTATIONS AS INDICATED. AREAS OF BACKFRIT TO MATCH C AS TAGGED L1
- M** BALCONY AND WINTERGARDEN SOFFITS: WHITE INTERLOCKED POWDERCOATED ALUMINIUM PANELS WITH HIDDEN FIXINGS
- N** GROUND FLOOR SOFFIT: SILVER BRIGHTENED ANODISED ALUMINIUM INTERLOCKING PANELS WITH HIDDEN FIXINGS - FORMING SCULPTED SOFFIT (UA NATURAL 100A)
- P** ANODISED EXTRUDED ALUMINIUM C-CHANNEL TO RECEIVE SHUTTER TRACKS WHERE APPLICABLE. VARIOUS FINISHES REQUIRED: TYPICALLY BRIGHTENED SILVER (UA NATURAL 100A), WHERE THE CHANNEL SITS BETWEEN TWO BLUE/BLACK RAINSCREEN ELEMENTS - COLOUR TO BE ANODISED UA 150-2 DARK BLUE. C-CHANNEL PROFILE ALSO VARIES, WHERE CHANNEL SITS BETWEEN TWO RAINSCREEN ELEMENTS - TO BE AN L-CHANNEL AS A CONTINUATION OF THE C-CHANNEL TOP FLANGE - REFER TO DETAILS
- Q** UNITSISED FULL HEIGHT EXTERNALLY FRAMELESS, INTERNAL SLIM FRAMED LOW-IRON GLAZED CURTAIN WALLING SYSTEM TO WINTERGARDENS WITH FIXED AND SLIDING PANELS. AREAS OF ROOF GLAZING TO MATCH AS INDICATED. GLASS RAINSCREEN TO SOFFIT, ROOF AND SIDES INCLUDING SOLID OPENING VENT TO MATCH A
- R** PROJECTING BAY WITH SINGLE PIECE OF EXTRA CLEAR GLASS TO FRONT WITH BLUE/BLACK BACKFRIT TO EDGE AS INDICATED. GLASS RAINSCREEN TO SOFFIT, ROOF AND SIDES INCLUDING SOLID OPENING VENT TO MATCH A
- S** FRAMELESS CURTAIN WALLING SYSTEM TO STAIRCASE. TRANSLUCENT PHOTOVOLTAIC PANELS LAMINATED INTO GLAZING ON SOUTHERN FACE OF STAIRCASE ENCLOSURE (INDICATED BY HORIZONTAL HATCH AT GROUND FLOOR. GLASS TO BE LOW IRON TO MATCH L (NON HATCHED AREA)
- T** METAL STAIRCASE RAL 1016 SULPHUR YELLOW
- U** CONCRETE COLUMNS WITH FINE SMOOTH VISUAL GRADE FINISH
- V** SLOPED METALLIC FLUSH LOUVRE SYSTEM TO MATCH COLOUR OF G PERMITTING NATURAL VENTILATION OF PLANT AREA.

NOTES

- HATCHED AREAS SHOWN INDICATIVELY - REFER TO LANDSCAPE ARCHITECT DRAWINGS
- THE BACKGROUND AND CONTEXT INCLUDING THE FINANCE CRICK INSTITUTE IS SHOWN FOR ILLUSTRATIVE PURPOSES ONLY. THE AIDS ARE CORRECT BUT THE DRAWING FORM IS NOT BASED UPON SURVEY INFORMATION
- TREES SHOWN INDICATIVELY AND NOT SHOWN IN FRONT OF BUILDING FOR CLARITY
- ALL INTERNAL LAYOUTS ARE INDICATIVE ONLY

REV	DESCRIPTION	BY	CHK	QA	DATE
P06	LEVEL 15 & 16 BALCONIES REVISED	WH	JSR		11.08.16
P05	REVISED PLANNING ISSUE	JEA	WH		21.03.16
O4	STAGE 3 ISSUE	WH	PM		18.12.15
P03	PLANNING ISSUE	WH	PM		30.11.15
P02	FINAL PLANNING DRAFT SUBMISSION	WH	PM		03.11.15

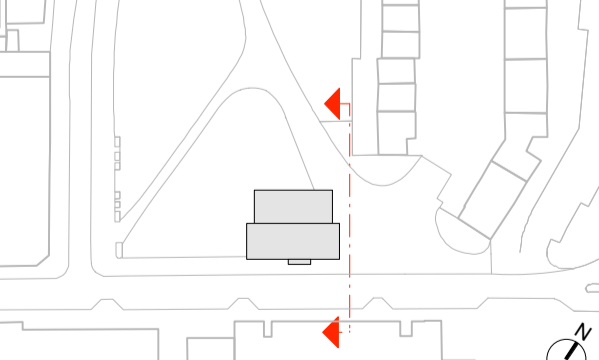
REV	DESCRIPTION	BY	CHK	QA	DATE
P06	POST PLANNING REVISION	WH	JSR		11.08.16
P05	PLANNING ISSUE	JEA	WH		21.03.16
O4	STAGE 3 ISSUE	WH	PM		18.12.15
P03	PLANNING ISSUE	WH	PM		30.11.15
P02	FINAL PLANNING DRAFT SUBMISSION	WH	PM		03.11.15

REV	DESCRIPTION	BY	CHK	QA	DATE
P06	POST PLANNING REVISION	WH	JSR		11.08.16
P05	PLANNING ISSUE	JEA	WH		21.03.16
O4	STAGE 3 ISSUE	WH	PM		18.12.15
P03	PLANNING ISSUE	WH	PM		30.11.15
P02	FINAL PLANNING DRAFT SUBMISSION	WH	PM		03.11.15

SITE PLAN - KEY

AUTHOR
dRMM ARCHITECTS

TITLE
EAST BAY ELEVATION



PROJECT	SCALE	SIZE
BRILL PLACE	1:50	A1
DRAWING NO	1:100	A3
372-ELE-451		REVISION
		P06

1 EAST BAY ELEVATION
SCALE 1:50