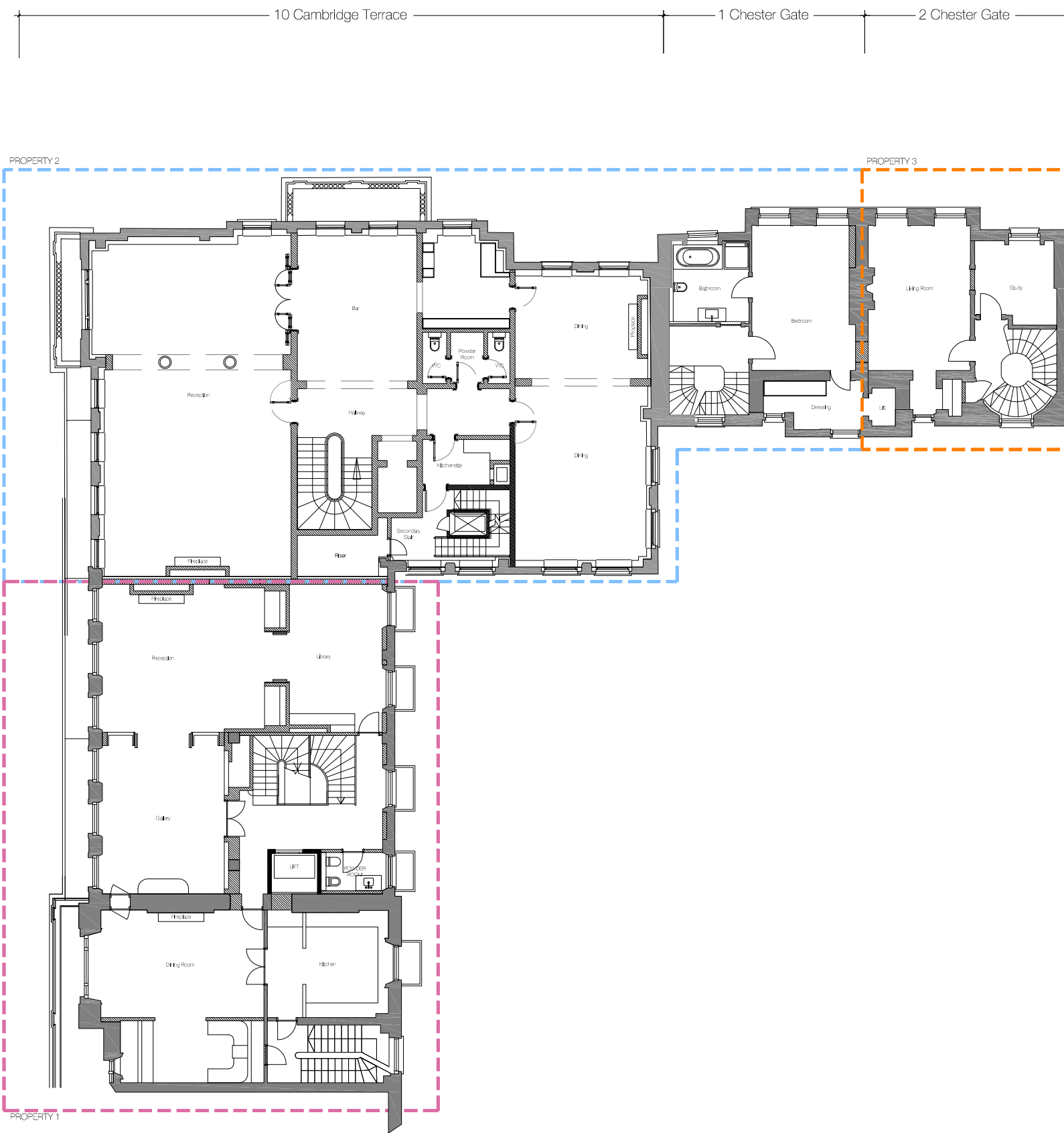




**DISCLAIMER**  
In accordance with our duties under the Misrepresentation Act 1967 and the Misrepresentation Act 1991, these details have been prepared in good faith but are not intended to constitute part of an offer of contract or create any contractual relationship. No disposition of information of any kind provided by CPC London or its Agents, whether written or verbal, contained in these Particulars or otherwise, shall constitute an offer or agreement, and accordingly, any information is given orally without responsibility on the part of CPC London, its Agents or the seller. Any plans, photos, and computer-generated images shown are indicative and cannot be guaranteed to represent the complete finished condition of a scheme. Any Areas, measurements or distances given are approximate only. Any products and materials shown are indicated as indicative only and may be subject to variations of change. It is not possible to scale from these drawings. Any reference to alterations to or use of any part of the property is not a statement that any necessary planning, building regulations or other consent has been obtained. These matters must be verified by any buyer/lessee. Any buyer/lessee must satisfy himself by inspection or other means as to the correctness of any information given.  
© All rights reserved to CPC London.

**NOTES**

- PROPERTY 1
- PROPERTY 2
- PROPERTY 3



REV	BY	DATE	DESCRIPTION

PROJECT CODE:  
Project Quad

PROJECT TITLE:  
6-10 Cambridge Terrace  
and 1-2 Chester Gate  
Regents Park  
London NW1

DRAWING TITLE:  
FIRST FLOOR  
PROPOSED

DRAWN BY: NC	CHECKED BY: NC
ISSUED FOR: PLANNING	
SCALE: 1:200 @ A3	DATE: APR 16
DRAWING NO: 639-2.004	REVISION: D