



DISCLAIMER
In accordance with our duties under the Misrepresentation Act 1967 and the Information Act 1991, these details have been prepared in good faith but are not intended to constitute part of an offer of contract or create any contractual relationship. No disposition or information of any kind provided by CPC London or its Agents, whether written or oral, contained in these Particulars or otherwise, may be relied upon as a statement of representation, warranty or fact. Neither CPC London nor its Agents have any authority to make any representation or warranty and accordingly any information is given orally without responsibility on the part of CPC London, its Agents or the seller. Any plans, photos, and computer-generated images shown are indicative and cannot be guaranteed to represent the complete finished condition of a scheme. Any Areas, measurements or distances shown are approximate only. Any products and materials shown are indicated as indicative only and may be subject to variations or changes. It is not possible to scale from these drawings. Any reference to alterations to or use of any part of the property is not a statement that any necessary planning, building regulations or other consent has been obtained. These matters must be verified by any buyer/lessee. Any buyer/lessee must satisfy himself by inspection or other means as to the correctness of any information given.
© All rights reserved to CPC London.

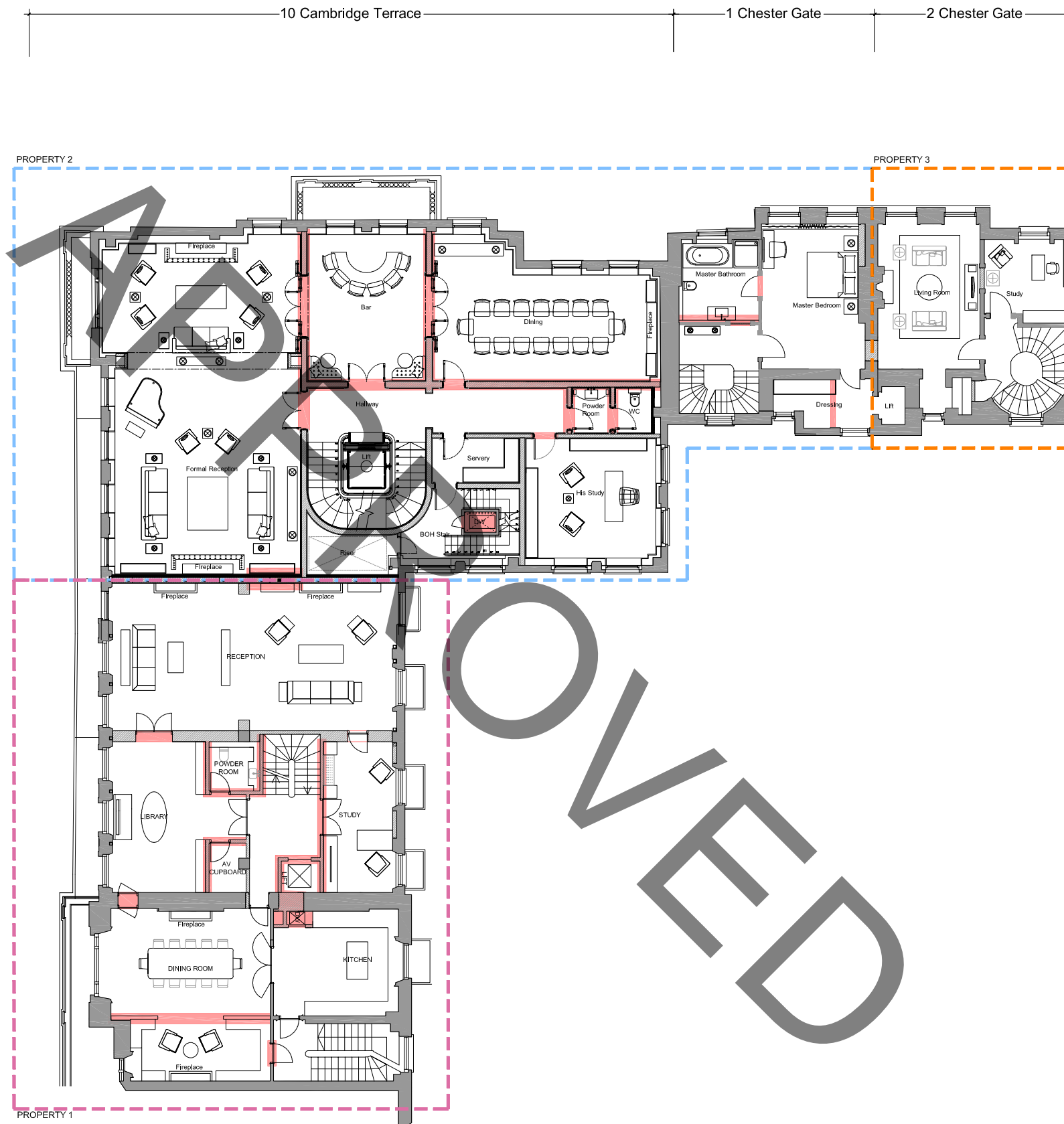
NOTES

- PROPERTY 1
- PROPERTY 2
- PROPERTY 3

AREA WITH AMENDMENTS FROM PREVIOUSLY APPROVED APPLICATION

EXISTING WALL

PROPOSED WALL



10 Cambridge Terrace

9 Cambridge Terrace

8 Cambridge Terrace

7 Cambridge Terrace

6 Cambridge Terrace

10 Cambridge Terrace

1 Chester Gate

2 Chester Gate

OVERLAP

REV	BY	DATE	DESCRIPTION

PROJECT CODE:
Project Quad

PROJECT TITLE:
**6-10 Cambridge Terrace and 1-2 Chester Gate
Regents Park
London NW1**

DRAWING TITLE:
**FIRST FLOOR
PROPOSED**

DRAWN BY: CN	CHECKED BY: NC
ISSUED FOR: PLANNING	
SCALE: 1:200 @ A3	DATE: MAR 16
DRAWING NO: 2.004	REVISION: C