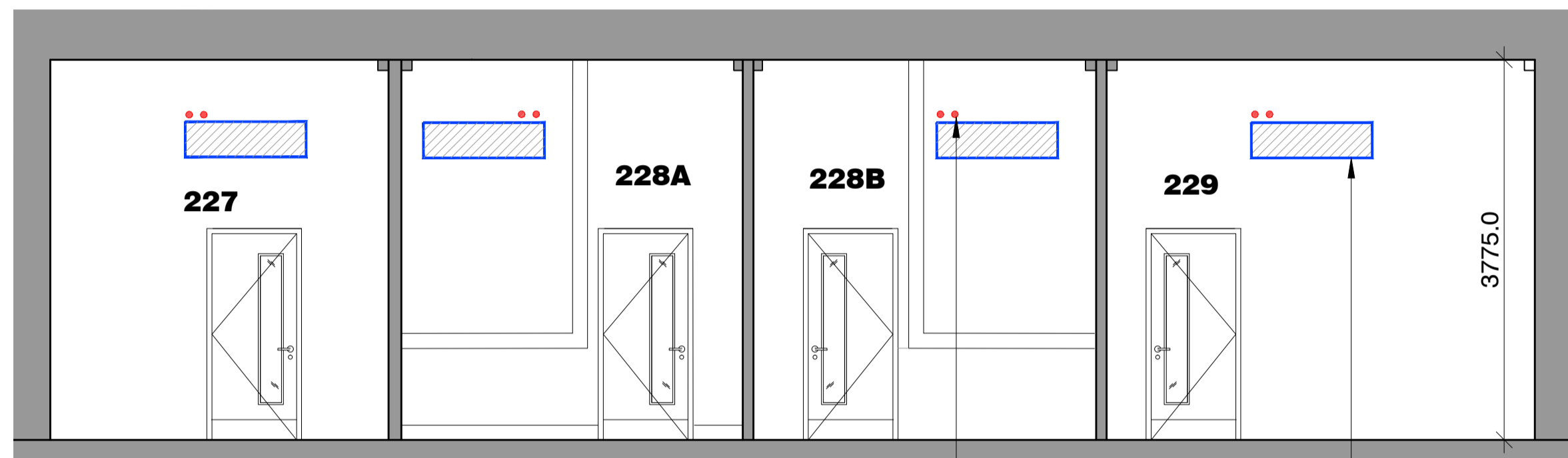


1 Elevation A: Internal Elevation from corridor
1:50

Indicative penetration routes
alongside wall from corridor

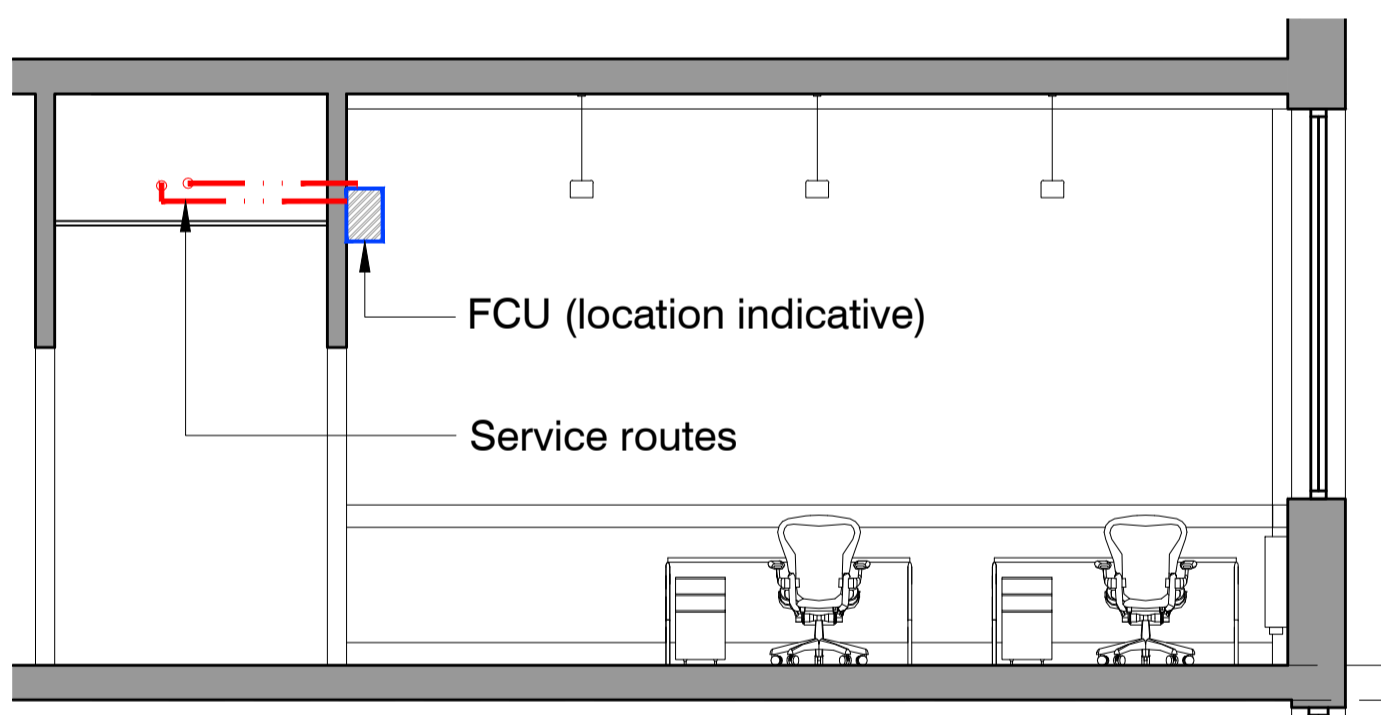
Retained existing
suspended ceiling tiles



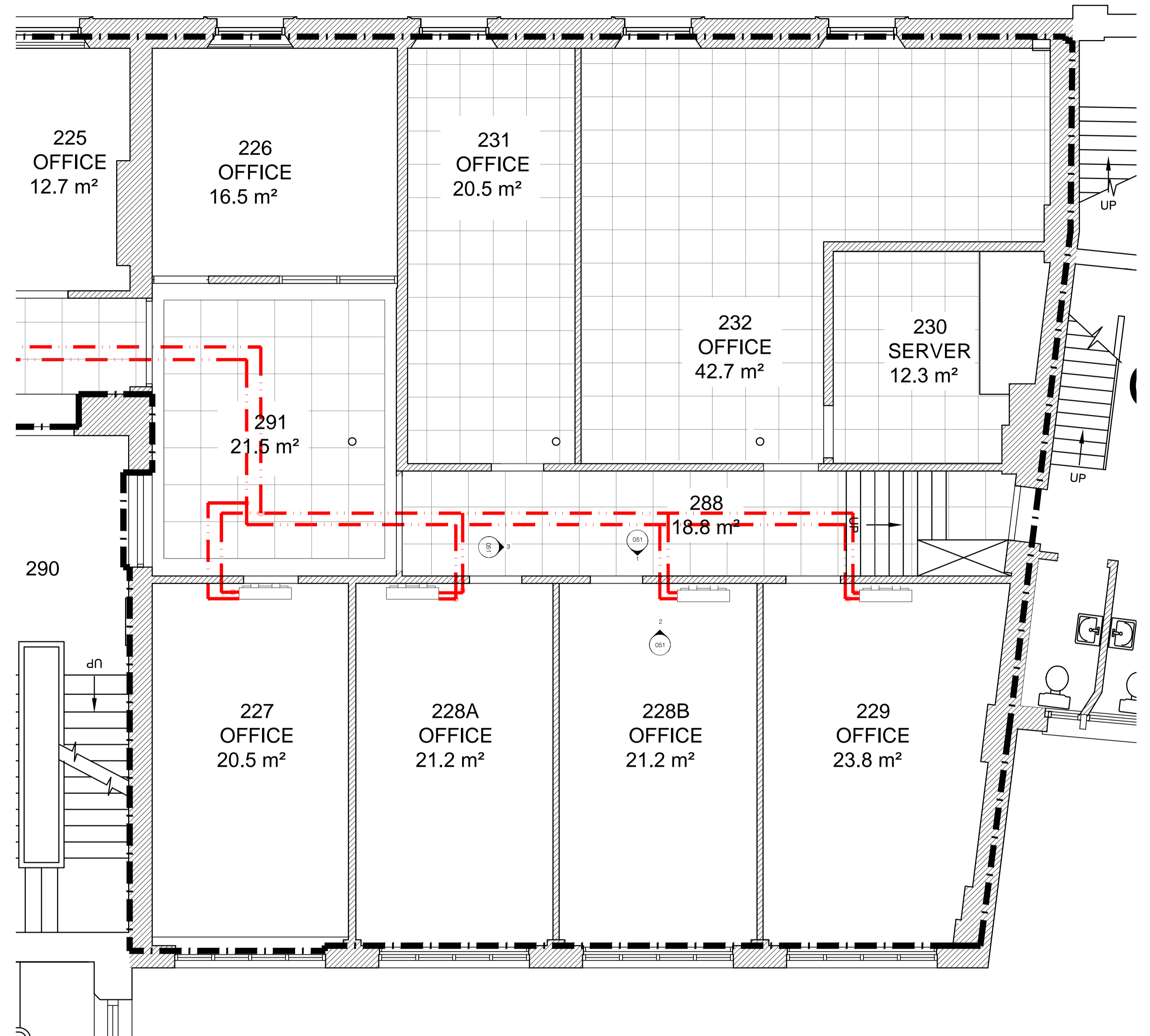
2 Elevation B: Internal Elevation from Rooms 227, 228A, 228B, and 229
1:50

Service routes penetration
alongside offices

Fan coil units location

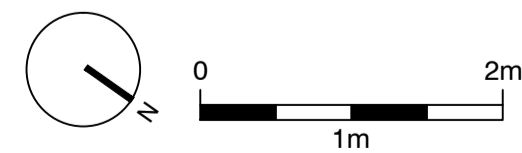


3 Typical cross section from lobby to shared office



4 Pearson 2nd Floor Room 227, 228A, 228B, 229

NOTE:
FCU locations and penetrative routes are indicative.
FCU locations and service routes needs to be checked
with Services Engineer's design.



standard notes

1. Do not scale this drawing.
2. All dimensions must be checked on site and any discrepancies verified with the architect.
3. Unless shown otherwise, all dimensions are to structural surfaces.

drawing notes

revisions

- | | | |
|----|------------|------------------------------------|
| P1 | 29.07.2016 | Issued for Listed Planning Consent |
|----|------------|------------------------------------|

UCLU @ GOWER STREET

Proposed Pearson 2nd Floor

date JAN 2016	client UCL	Levitt Bernstein 1 Kingsland Passage London E8 2BB
scale 1:50 @A1	drawing PEARSON FCU Location Elevation	fr 020 7275 9348 w levittbernstein.co.uk e post@levittbernstein.co.uk
drawn KS	checked TG	drawing number 3008P_L053
		rev P1

THIS IS NOT A CONSTRUCTION DRAWING. IT IS UNSUITABLE FOR THE PURPOSE OF CONSTRUCTION AND MUST ON NO ACCOUNT BE USED AS SUCH

Levitt Bernstein