

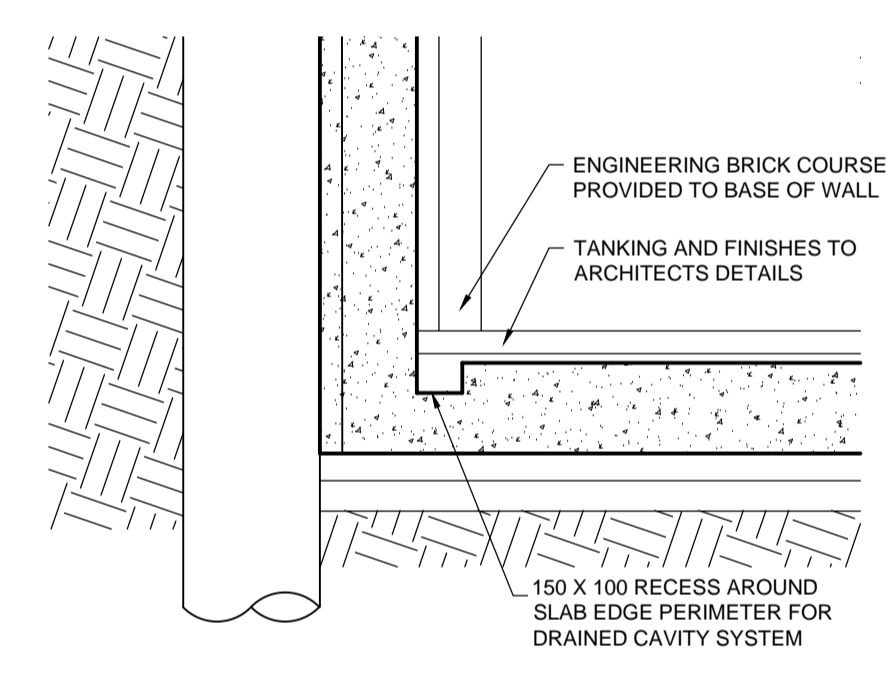
GENERAL NOTES:
 DIMENSIONS ARE NOT TO BE SCALED FROM THIS DRAWING
 ALL DIMENSIONS ARE TO BE CHECKED ON SITE PRIOR TO COMMENCEMENT OF ANY WORKS, AND ANY DISCREPANCIES REPORTED IMMEDIATELY TO THE ENGINEER.
 THIS DRAWING IS TO BE READ IN CONJUNCTION WITH ALL OTHER DESIGN TEAM DETAILS AND SPECIFICATIONS.

OUTSIDE LINE OF TUBE RUNNING TUNNEL. REFER TO SECTION DRAWING 101 FOR DEPTH

ALL DIMENSIONS FOR TENDER ONLY

Pile No.	Dia mm	Total pile vertical load (kN)	Additional surcharge load (kN/m ²)	Pile Cut Off Level	Easings North
1	450	100		67.675	
2	450	100		67.675	
3	450	100		67.675	
4	450	100		67.675	
5	450	100		67.675	
6	450	100		67.675	
7	450	143		67.675	
8	450	143		67.675	
9	450	143		67.675	
10	450	143		67.675	
11	450	243		67.675	
12	450	274		67.675	
13	450	274		67.675	
14	450	267		67.675	
15	450	157		67.675	
16	450	157		67.675	
17	450	157		67.675	
18	450	157		67.675	
19	450	157		67.675	
20	450	237		67.675	
21	450	237		67.675	
22	450	157		67.675	
23	450	157		67.675	
24	450	382		67.275	
25	450	386		67.275	
26	450	386		67.275	
27	450	386		67.275	
28	450	345		67.275	
29	450	121		67.275	
30	450	341		67.275	
31	450	343		67.275	
32	450	343		67.275	
33	450	341		67.275	
34	450	121		67.275	
35	450	121		67.275	
36	450	121		67.275	
37	450	121		67.275	
38	450	343		67.275	
39	450	343		67.275	
40	450	343		67.275	
41	450	343		67.275	
42	450	121		67.275	
43	450	287		67.275	
44	450	287		67.275	
45	450	287		67.275	
46	450	287		67.275	
47	450	261		67.275	
48	450	261		67.275	
49	450	261		67.275	
50	450	261		67.275	
51	450	110		67.275	
52	450	110		67.275	
53	450	110		67.275	
54	450	110		67.275	
55	450	110		67.275	
56	450	110		67.275	
57	450	110		67.275	
58	450	110		67.275	
59	450	110		67.275	
60	450	110		67.275	
61	450	110		67.275	
62	450	110		67.275	
63	450	110		67.275	
64	450	220		68.265	
65	450	220		68.265	

51	450	110		67.275	
52	450	110		67.275	
53	450	110		67.275	
54	450	110		67.275	
55	450	110		67.275	
56	450	110		67.275	
57	450	110		67.275	
58	450	110		67.275	
59	450	110		67.275	
60	450	110		67.275	
61	450	110		67.275	
62	450	110		67.275	
63	450	110		67.275	
64	450	220		68.265	
65	450	220		68.265	
66	450	220		68.265	
67	450	220		68.265	
68	450	220		68.265	
69	450	220		68.265	
70	450	220		68.265	
71	450	220		68.265	
72	450	220	240	68.265	
73	450	220	240	68.265	
74	450	220	4	240	68.265
75	450	220	4	240	68.265
76	450	220	4	240	68.265
77	450	220	4	240	68.265
78	450	220	4	240	68.265
79	450	220	4	240	68.265
80	450	220	240	68.265	
81	450	220	240	68.265	
82	450	220	240	68.265	
83	450	220	240	68.265	
84	450	220	240	68.265	
85	450	220	3	240	68.265
86	450	220	3	240	68.265
87	450	220	3	240	68.265
88	450	143	3	240	68.265
89	450	143	3	240	68.265
90	450	143	240	68.265	
91	450	143	240	68.265	
92	450	143	240	68.265	
93	450	143	240	68.265	
94	450	143	240	68.265	
95	450	143	2	240	68.265
96	450	143	2	240	68.265
97	450	143	2	240	68.265
98	450	143	240	68.265	
99	450	143	240	68.265	
100	450	293	240	68.265	
101	450	293	1	240	68.265
102	450	293	1	240	68.265
103	450	293	1	240	68.265
104	450	143	240	67.675	
105	450	143	240	67.675	
106	450	143	240	67.675	
107	450	143	240	67.675	
108	450	100	240	67.675	
109	450	100		67.675	
110	450	100		67.675	
111	450	100		67.675	
112	450	100		67.675	
113	450	100		67.675	
114	450	100		67.675	
115	450	100		67.675	
116	450	100		67.675	
117	450	100		67.675	
118	450	100		67.675	
119	450	100		67.675	
120	450	100		67.675	

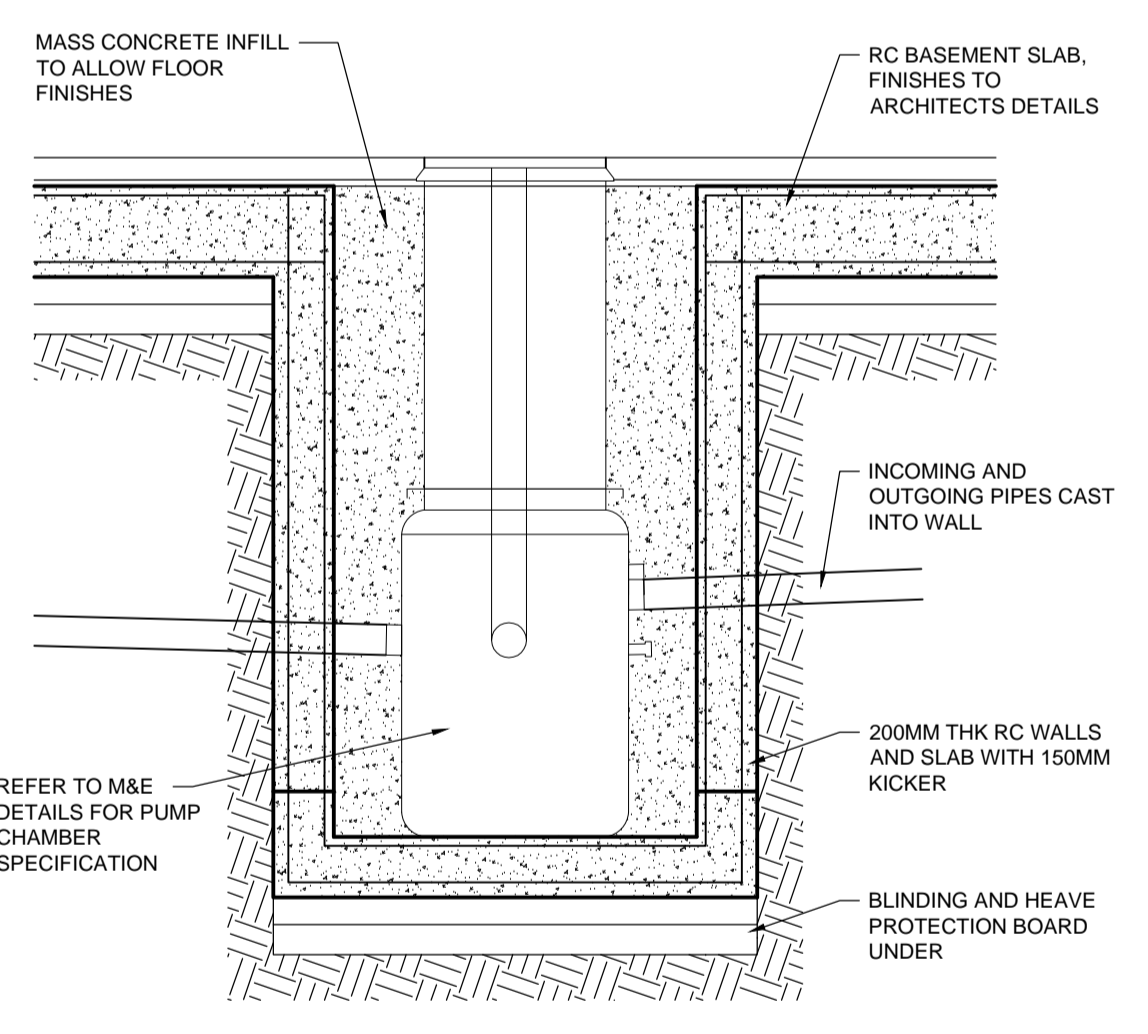


TYPICAL SLAB EDGE DETAIL 1:25

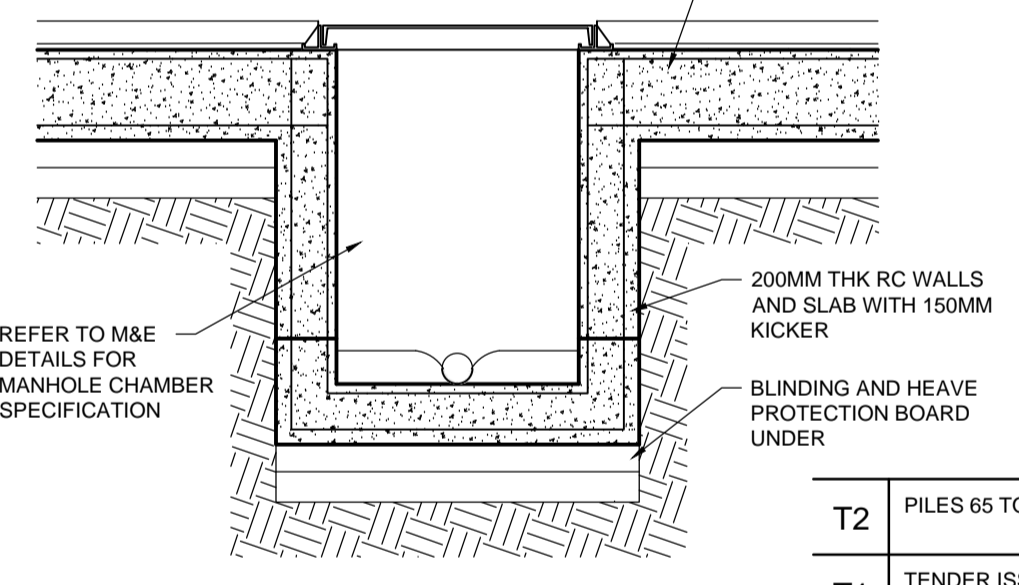
121	450	100		67.675	
122	450	1100/450		63.480	
123	450	1100/450		63.480	
124	450	1100/450		63.480	
125	450	1100/450		63.480	
126	450	1100/450		63.480	
127	450	1100/450		63.480	
128	450	300		64.58	
129	450	300		64.58	
130	450	300		64.58	
131	450	300		64.58	
132	450	300		64.58	
133	450	300		64.58	
134	450	300		64.58	
135	450	300		64.58	
136	450	300		64.58	
137	450	300		64.58	
138	450	300		64.58	
139	450	1100/450		63.480	
140	450	1100/450		63.480	

RISK DETAILS AND STAGE	RESIDUAL RISK	SUGGESTED CONTROL MEASURES	DESIGNER
BASEMENT EXCAVATION ADJACENT MAIN ROAD. STAGES: D & C	POSSIBLE INJURY TO PERSONNEL DURING EXCAVATION FOR BASEMENT CONSTRUCTION, NEW FOUNDATION ETC.	CONTRACTOR TO PRODUCE METHOD STATEMENT ON CONSTRUCTION SEQUENCING.	
EXISTING BUILDINGS TO PERIMETER OF SITE STAGES: D & C	POSSIBLE DAMAGE DURING SITE CLEARANCE & DEMOLITION DURING OPERATIONS.	CONTRACTOR TO PRODUCE METHOD STATEMENT ON CONSTRUCTION SEQUENCING AND REDUCTION OF RISK TO PUBLIC AND PERSONNEL.	
EXISTING SERVICES CROSSING SITE FORM EXISTING PROPERTIES STAGES: D & C	POSSIBLE DAMAGE SITE MACHINERY DURING OPERATIONS.	CONTRACTOR TO PRODUCE METHOD STATEMENT ON CONSTRUCTION SEQUENCING AND REDUCTION OF RISK TO PUBLIC AND PERSONNEL.	

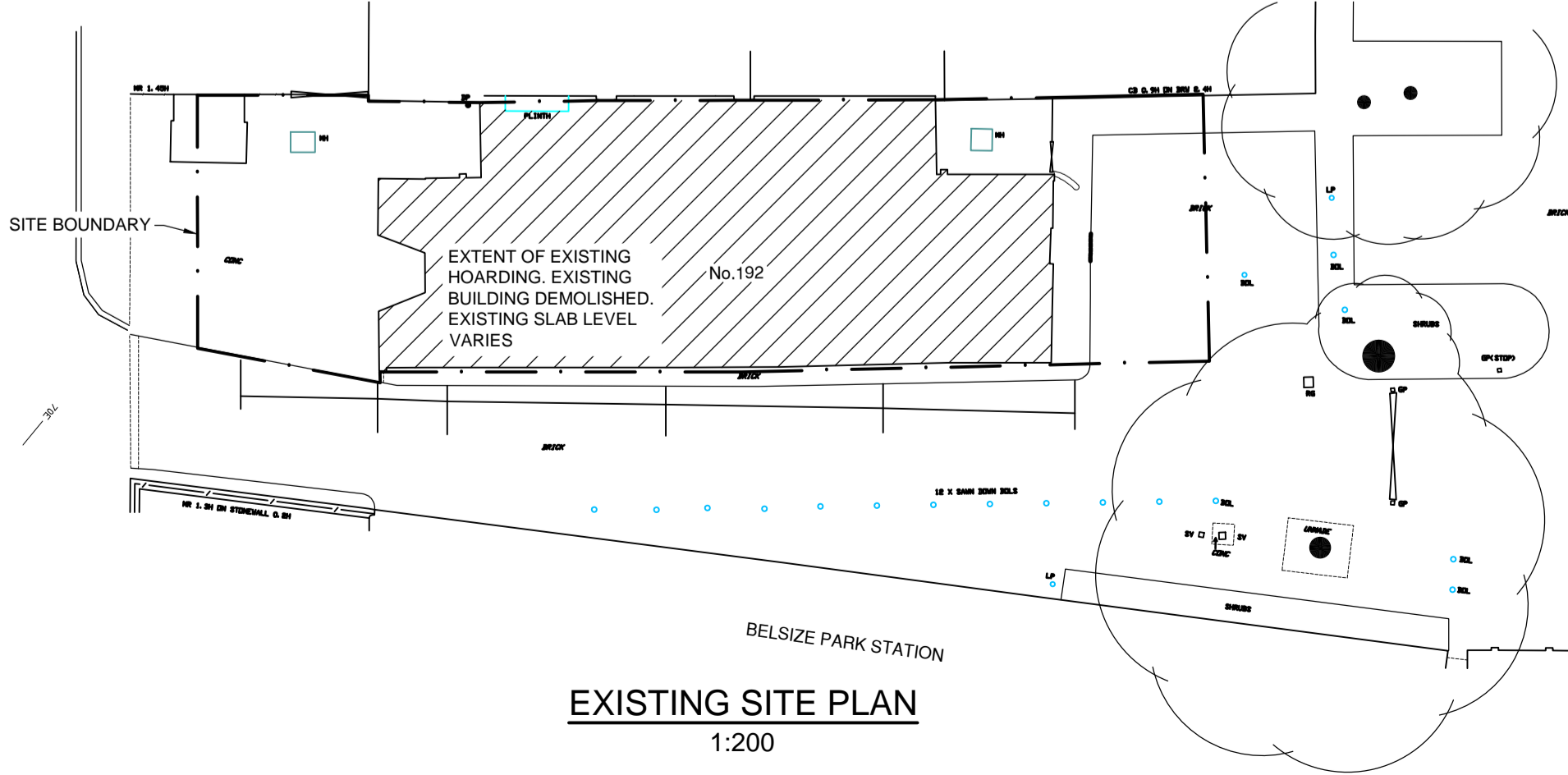
STAGES: PC- PRE-CONSTRUCTION, C-CONSTRUCTION, FM- FUTURE MAINTENANCE, D-DEMOLITION



TYPICAL PUMP CHAMBER SECTION 1:25



TYPICAL MANHOLE SECTION 1:25



EXISTING SITE PLAN 1:200

T2	PILES 65 TO 103 CUT OFF LEVEL REVISED	AM	AM	01.06.16
T1	TENDER ISSUE	AM	AM	23.05.16
P6	UPDATED TO SUIT LATEST ARCHITECTS LAYOUT	AM	AM	12.05.16
P5	UPDATED TO SUIT LATEST ARCHITECTS LAYOUT	AM	AM	03.05.16
P4	PRELIMINARY TENDER ISSUE	AM	AM	15.04.16
P3	PILE 136 AND 137 MOVED TO SUIT COLUMN LOCATION	AM	AM	11.03.16
P2	REVISED AS RINGED	AM	AM	22.02.16

TRAIN & KEMP
 ENGINEERING BUSINESS SOLUTIONS
 10 Kennington Park Place Kennington London SE11 4AS
 Tel: +44 (0) 20 7582 1276 Fax: +44 (0) 20 7582 5728
 mail@trainandkemp.co.uk www.trainandkemp.co.uk

Client: SASHA TRADERS LTD

Project: 192 HAVERSTOCK HILL

Title: BASEMENT PLAN PHASE I

Drawing Status: TENDER

Date:	Drawing No.	Rev.
FEB 2016	13358_GA-01	T2

Scale: AS SHOWN A1
 Drawn: AM
 Chkd: AM