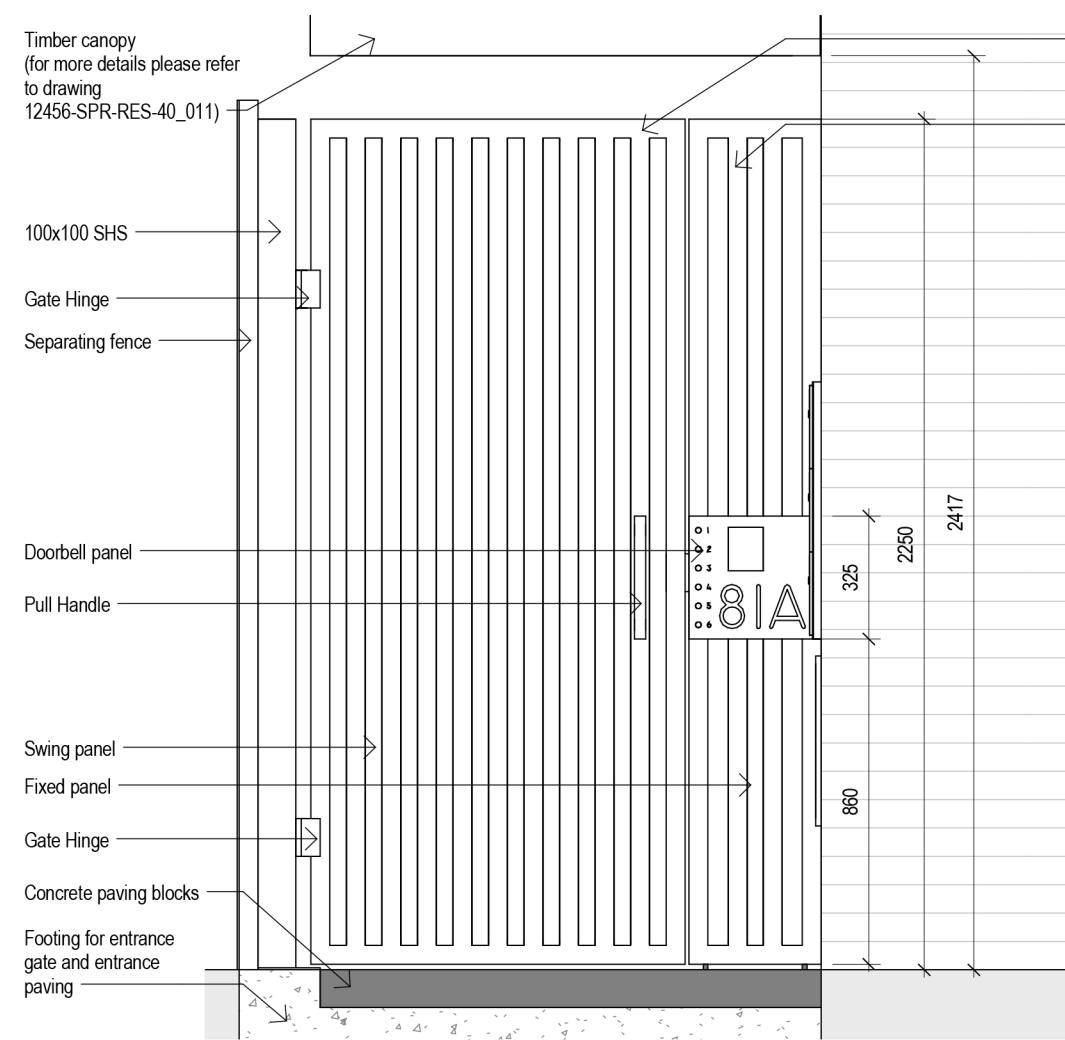


Entrance gate Section A

1 : 20

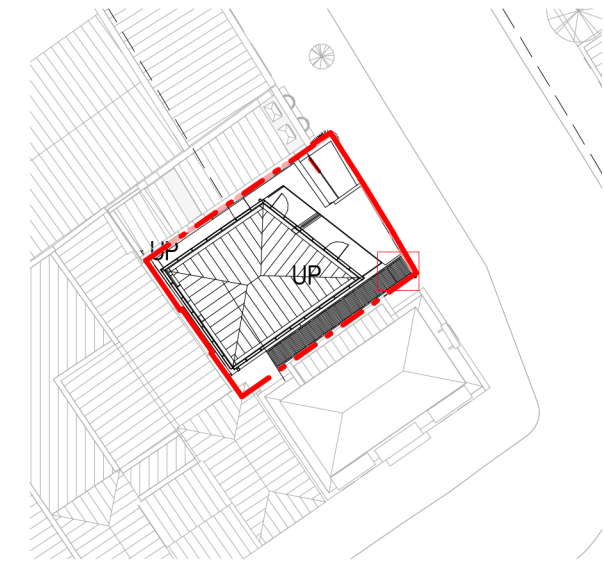


Entrance Gate Section B

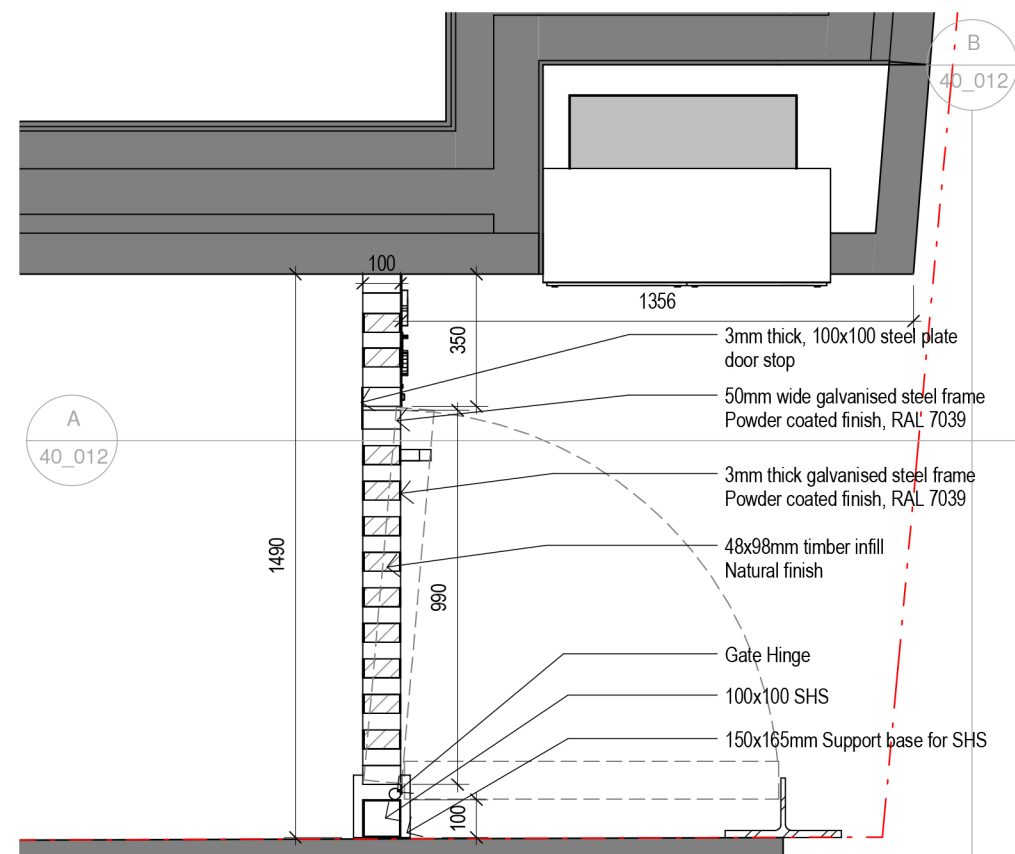
1 : 20

FRAME: Galvanised steel, powder coated finish. Colour RAL 7039

BARS:
- 3mm thick frame of galvanised steel, powder coated finish. Colour RAL 7039
- 48x98mm timber infill of natural finish

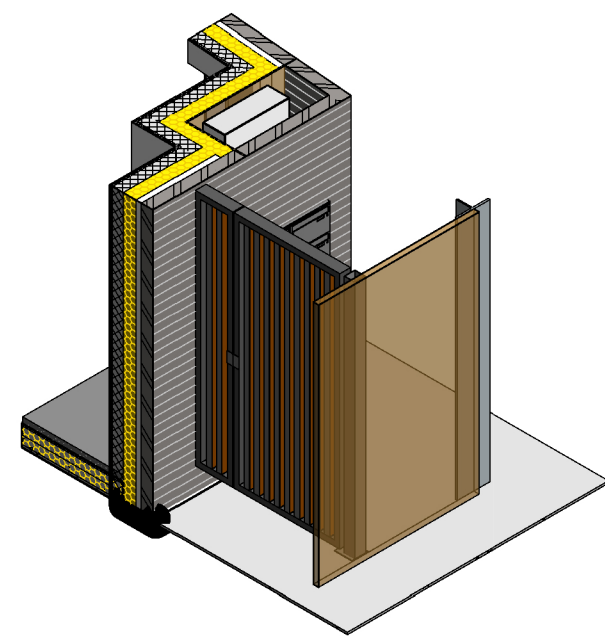


Location plan
Scale 1:500

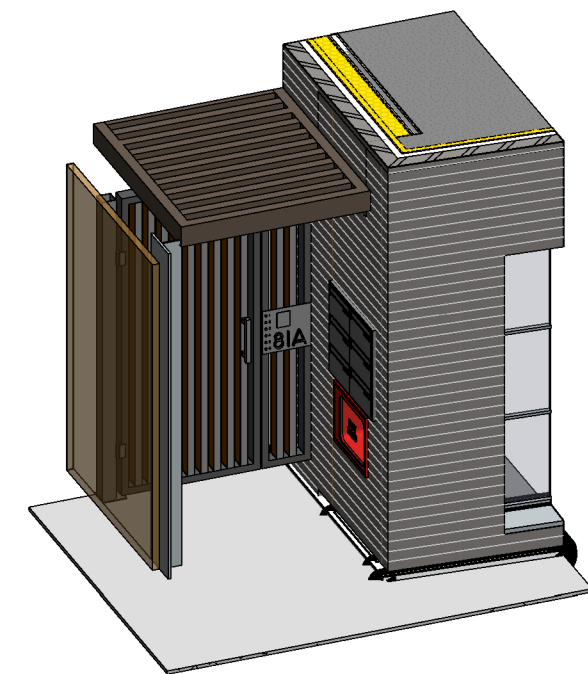


Entrance gate

1 : 20



Entrance gate view 1

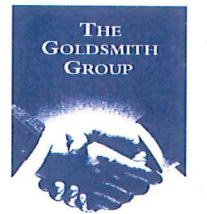


Entrance gate view 2

NOTE: All metalwork related to the entrance gate to be galvanised steel, powder coated finish, colour RAL 7039

Drawing title: Entrance gate
Date / Rev.: 09.08.2016 / A

Site address:
81A Bayham Street, NW1 0AG London



Goldsmith (London) Limited
Progress House
Powder Mill Lane
Dartford
Kent
DA1 1NT
Tel: 01322 222 333
Fax: 01322 294 444

This drawing is the copyright of The Goldsmith Group. Do not scale dimensions off this drawings. Check all dimensions on site before fabrication. Report all errors or omissions to TGG. Any discrepancy to be verified before proceeding with the works.