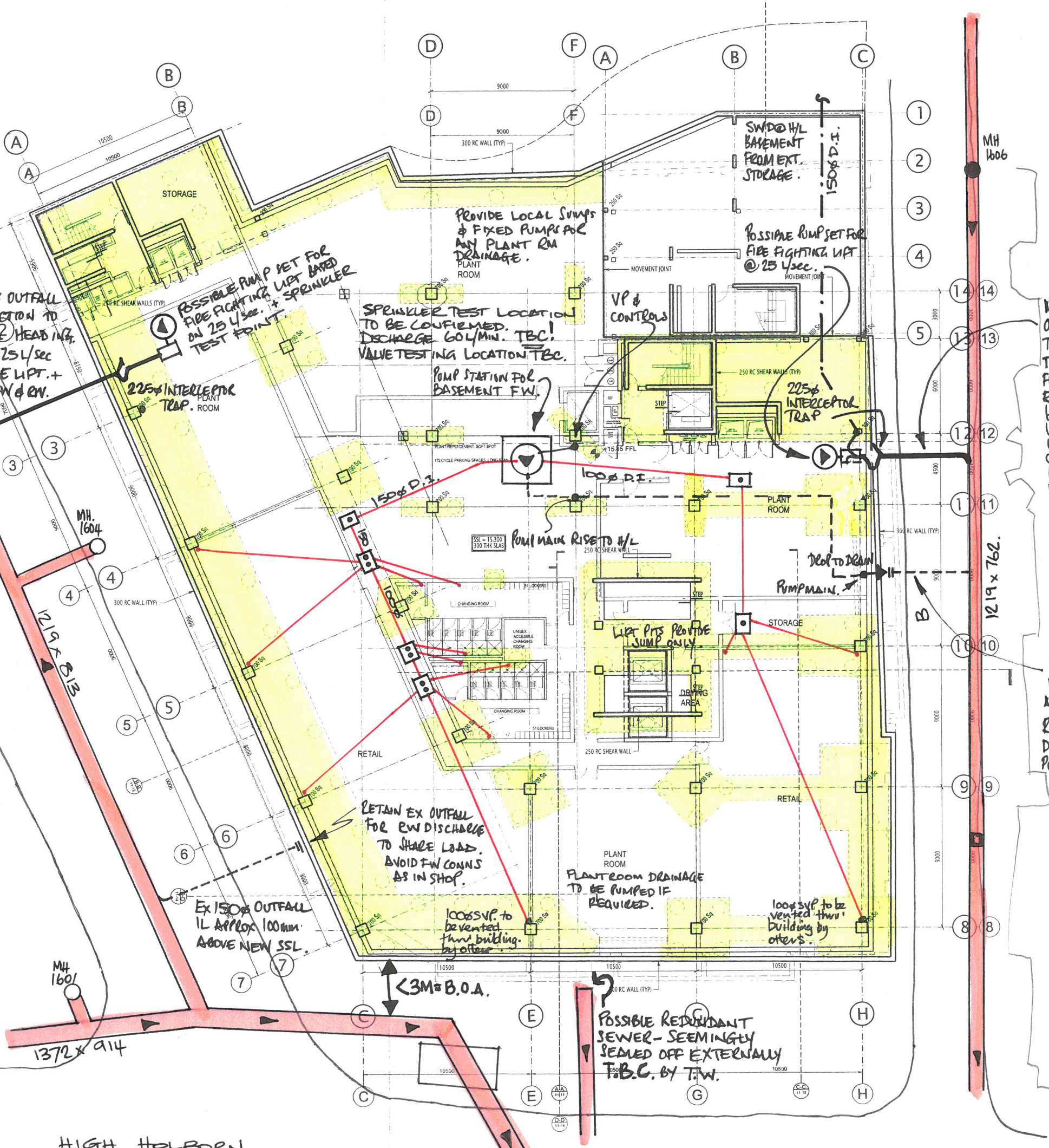


NOTE!

1. FIRE FIGHTING LIFT DRAINAGE (25 L/sec) MAY BE DELEGATED IF ALTERNATIVE METHODS ARE ACCEPTABLE TO OMIT DRAINAGE. FEEDBACK REQ'D FROM ARCH & MEP.
2. CNM ASKED DESIGN FW FLOWS TO CONFIRM CAPACITY OF EX. OUTFALLS. OUTFALL SIZES RECENTLY CONFIRMED BY CCTV SURVEY.
3. EX OUTFALL LEVELS RECENTLY CONFIRMED BY CCTV SURVEY LOWERING OF EX. SLAB PUTS OUTFALLS ABOVE NEW SSL.
4. EX OUTFALL CONNECTION IN RETAIL AREA NEEDS TO BE CONFIRMED AS ACCEPTABLE TO CLIENT & FUTURE TENANTS IN TERMS OF LEGAL ACCESS & FUTURE MAINTENANCE.



NOTES
UNLESS STATED OTHERWISE, THIS DRAWING IS TO BE REFERRED TO FOR SERVICES WORKS ONLY.
THE CONTRACTOR IS TO CHECK ALL DIMENSIONS AND EXISTING AND PROPOSED LEVELS PRIOR TO THE START OF WORKS, AND ANY ERRORS REPORTED TO THE ENGINEERS.
THIS DRAWING IS TO BE READ IN CONJUNCTION WITH THE LATEST ARCHITECTS AND STRUCTURAL ENGINEERS DRAWINGS.

NOTE.
ALL DRAINAGE UNDER BUILDING TO BE DUCTILE IRON AS ST. GOBAN.
IL'S OF NEW SEWER CONNS YET TO BE ENGINEERED BUT COULD BE ABOVE BASEMENT F.F.L.
<3M = B.O.A.
CONFIRM THAT SEWER IS MORE THAN 3M AWAY FROM NEW WORKS OR A BUILD-OVER AGREEMENT WILL NEED TO BE Sought FROM THAMES WATER.

NEW 225Ø SEWER OUTFALL & CONNECTION TO SEWER VIA HEADING TO SERVE 25 L/sec FROM FIRE LIFT + RESI FW & RWP + OFFICE FW.

EX 150Ø OUTFALL IL APPROX 100mm ABOVE NEW SSL. RETAIN FOR RWP DISCHARGE & FW PUMP SET FOR BASEMENT.

Rev	Revision Note	Revision Date	Drawn By	Checked By
P5	SLAB THICKNESS REDUCED	20.05.16	EP	U
P4	INFORMATION ADDED	11.05.16	EP	U
P3	REVIEW ISSUE	06.05.16	EP	U
P2	COORDINATION ISSUE	25.04.16	EP	U
P1	BASELINE DRAWING	15.04.16	YAU	U

150 HOLBORN

DRAINAGE PROPOSALS
BASEMENT PLAN

PERKINS + WILL

cnm Clarke Nicholls Marcel
ENGINEERS

SK160713 BASEMENT
ISSUED BY PW (CP)

Drawing Status: PRELIMINARY

Drawn By: EP	Checked By: U
Date: MARCH 2016	Scale: @A1 1:125
Drawing No.:	1036010-SK-D.100