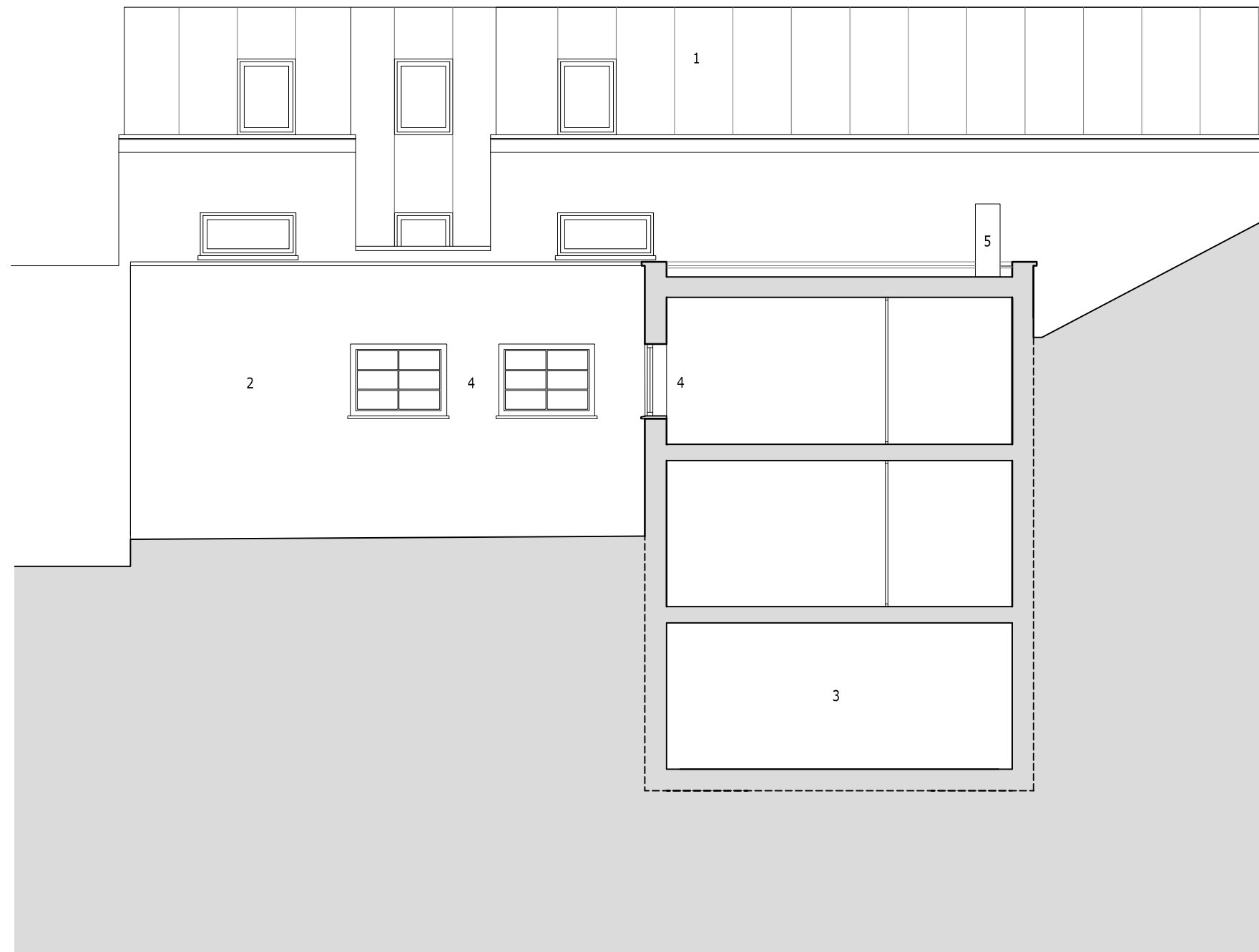


- 1 Pratt Mews building
- 2 Brick
- 3 New basement

Minor Material Amendments

- 4 New obscured window to match existing [dimensions of existing taken from survey]
- 5 External plant



0  10m

75 Bayham Street
 1030_16_P4_[MMA]:
Section BB (proposed)
 10th August 2016
 scale on A3 1:100

Innes Associates 02079 286734