

An aerial photograph of a city grid, likely New York City, showing a dense pattern of buildings and streets. A small green square is highlighted on the left side of the image, indicating the location of the 'Museum House' project. The text is overlaid on the top right of the image.

Museum House

Discharge of Condition 4
Roof Cladding Sample

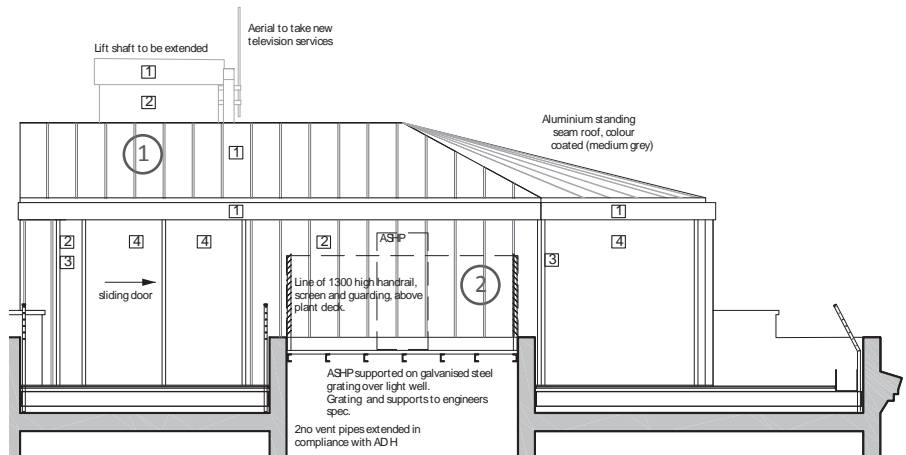
Ref 2014/4117/P – 23-26 Museum St, 5th floor roof extension – Condition 4

12041-2.1 Sample of the roof cladding

Photographic sample of the cladding system.

The sample can be viewed at ColldoCollins offices in London, or it could be couriered to your offices upon request.

- ① Cladding system to be Aluminium powder coated standing seamsheet. Seams approx 450mm apart. Colour to be RAL7012
- ②



ColladoCollinsArchitects