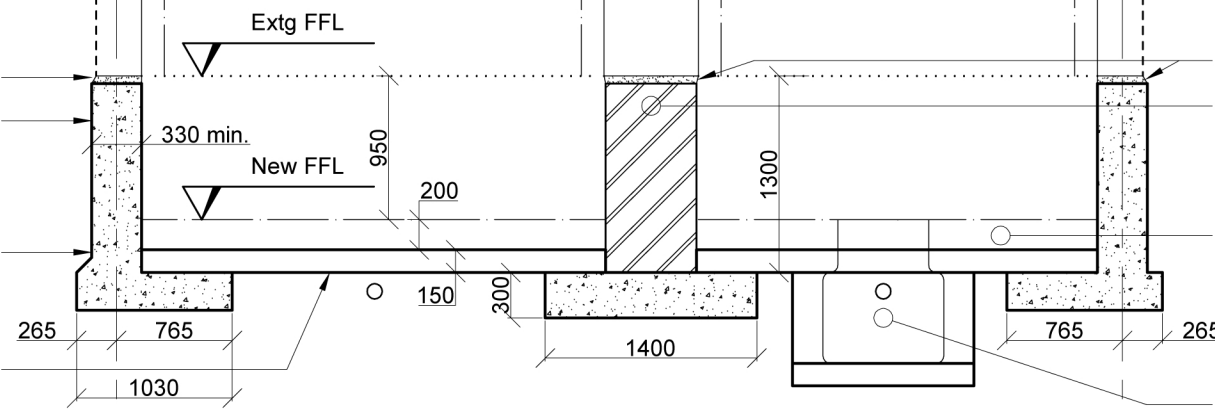


# Section 1

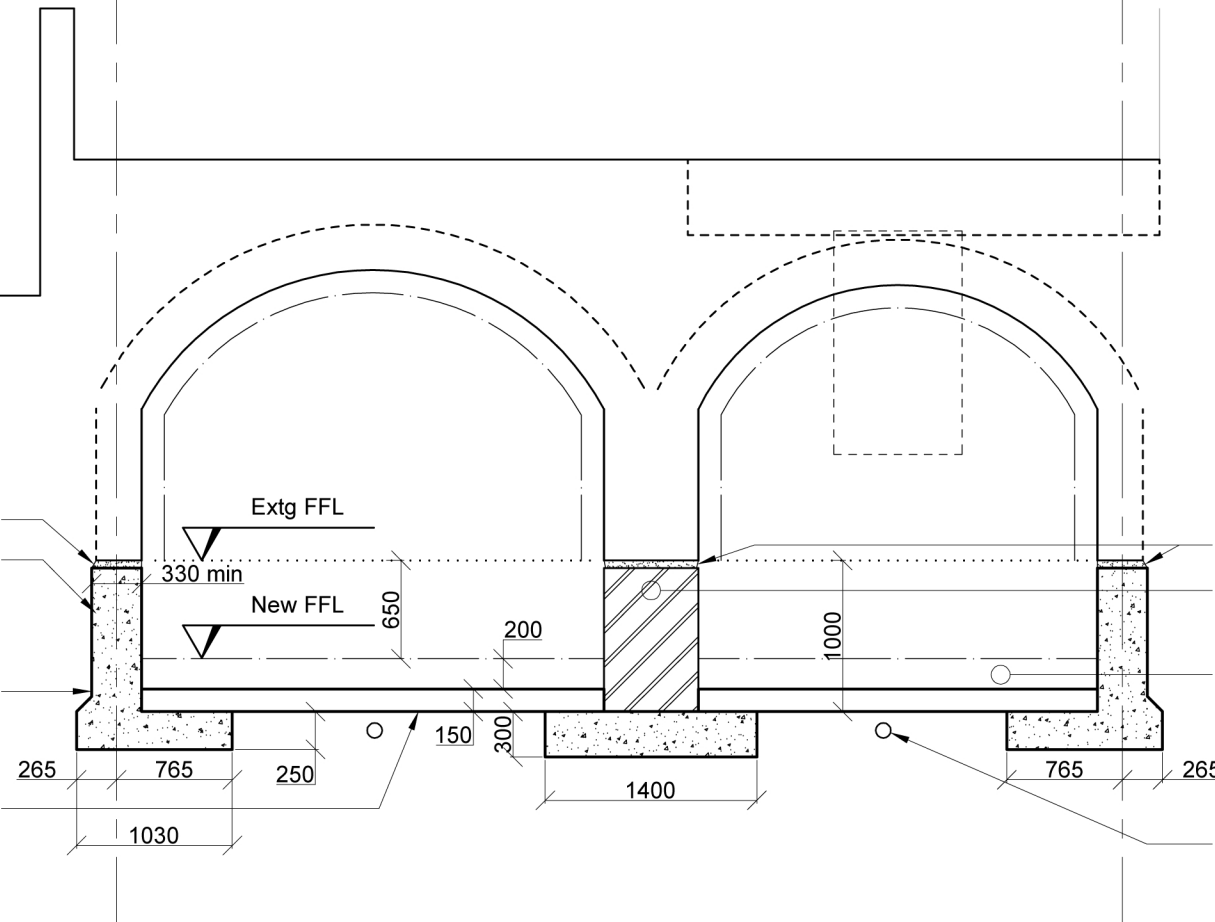
Well-rammed dry pack.  
 Underpin stem to extend at least as far as wall thickness above, to be confirmed during excavations.  
 Underpinning as detailed in sequence shown on plan and to underpinning specification.  
 150 thick grade C35 concrete slab with 1A252 mesh top (35mm cover) cast on 50mm concrete blinding on clean sub-base (natural clay).



Well-rammed dry pack.  
 Stem to internal underpinning to be formed either in concrete or Class B engineering brickwork.  
 Build up on slab to be screed to fall (if advised by damp proofing specialist) cavity drain membrane, insulation, levelling screed, finishing layer, all as specified by others.  
 Drainage runs for cavity drain damp proofing system by specialist.

# Section 2

Well-rammed dry pack.  
 Underpin stem to extend at least as far as wall thickness above, to be confirmed during excavations.  
 Underpinning as detailed in sequence shown on plan and to underpinning specification.  
 150 thick grade C35 concrete slab with 1A252 mesh top (35mm cover) cast on 50mm concrete blinding on clean sub-base (natural clay).



Well-rammed dry pack.  
 Stem to internal underpinning to be formed either in concrete or Class B engineering brickwork.  
 Build up on slab to be screed to fall (if advised by damp proofing specialist) cavity drain membrane, insulation, levelling screed, finishing layer, all as specified by others.  
 Drainage runs for cavity drain damp proofing system by specialist.

Scale 1:50 @ A3

### ABBREVIATIONS

T Top  
 B Bottom  
 GMS galvanised mild steel  
 TPC tooth plate connectors  
 LB load bearing  
 c/c centre to centre  
 extg existing

Rev	Date	Detail
A	21.06.16	ISSUED FOR BUILDING REGS
	13.06.16	PRELIMINARY FOR COMMENT

### Sections

IAN DRUMMOND  
 Consulting Engineers  
 90 Cowcross Street ~ London EC1M 6BH  
 Tel 020 7253 6805 ~ Fax 0844 854 6961

22 CHURCH ROW  
 LONDON NW3

Drawing Number 4303 / 3 Rev A