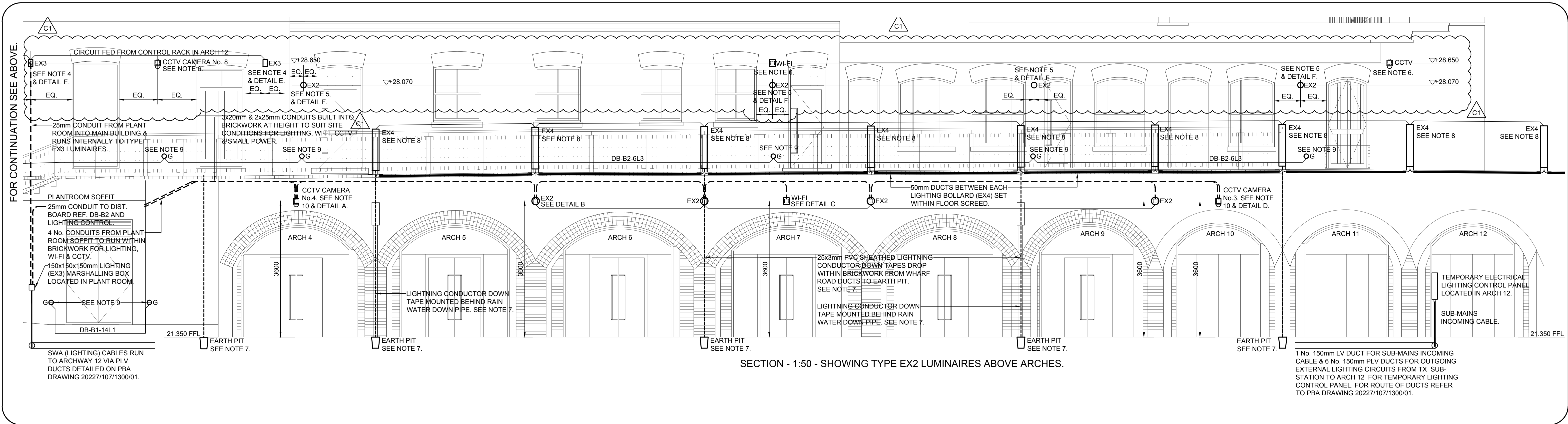
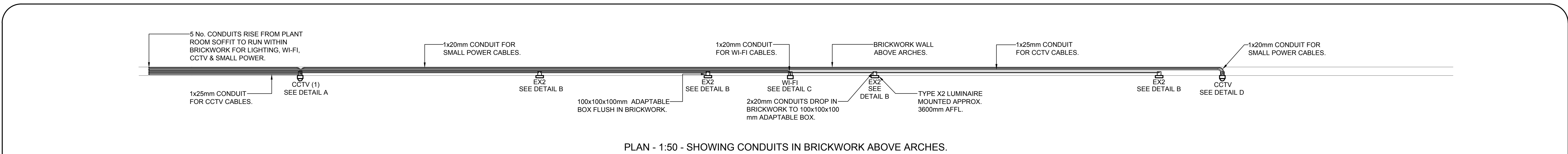


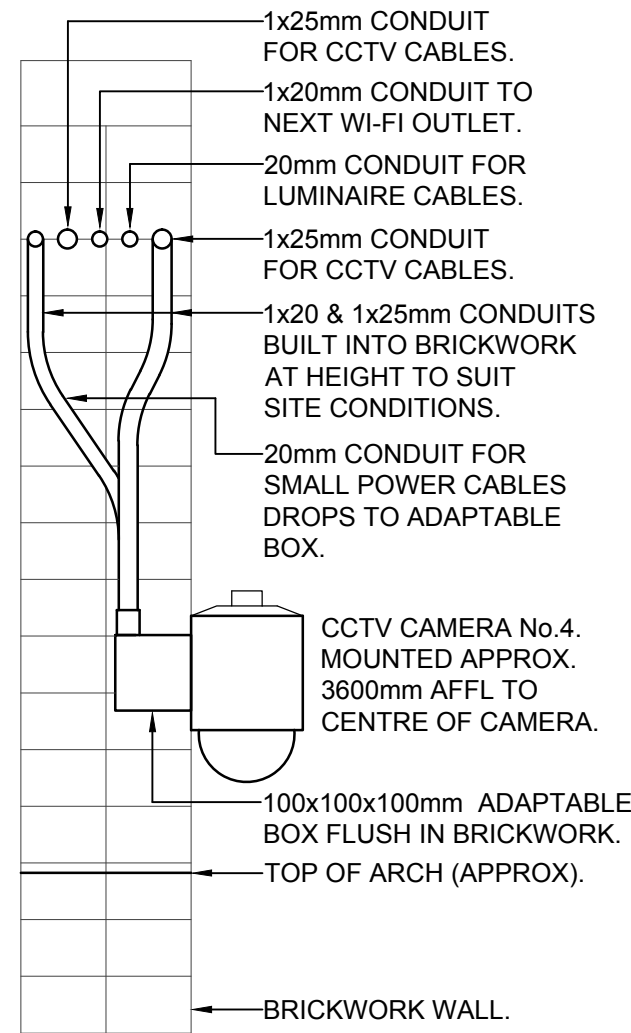
SECTION - 1:50 - SHOWING LUMINAIRES, CCTV & WI-FI IN BLOCKS 1, 2 & 3.



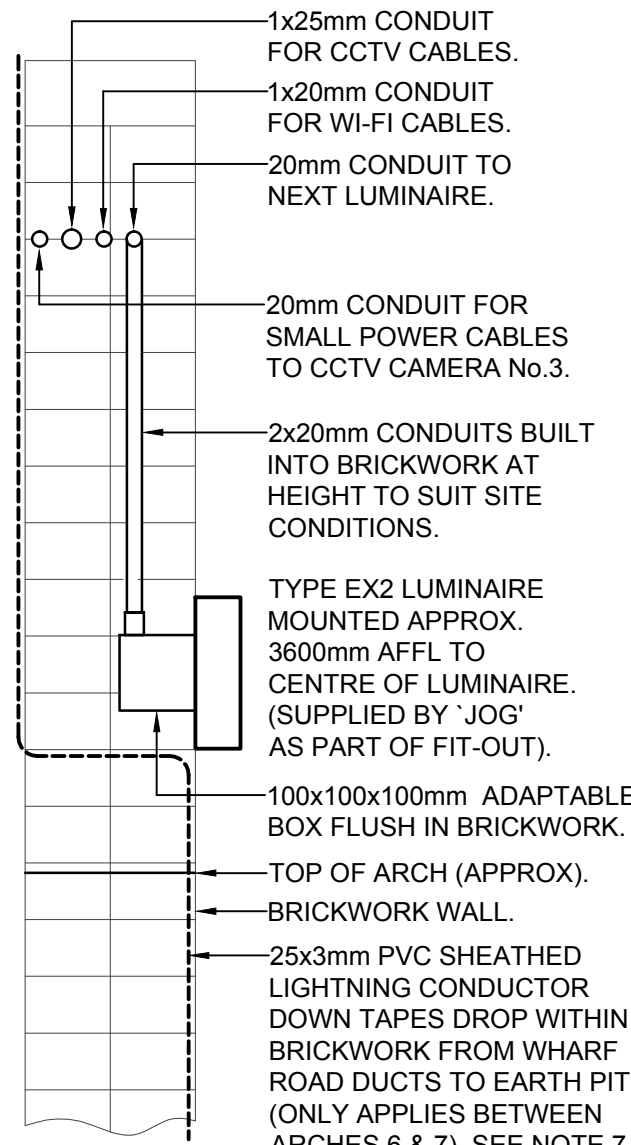
SECTION - 1:50 - SHOWING TYPE EX2 LUMINAIRES ABOVE ARCHES.



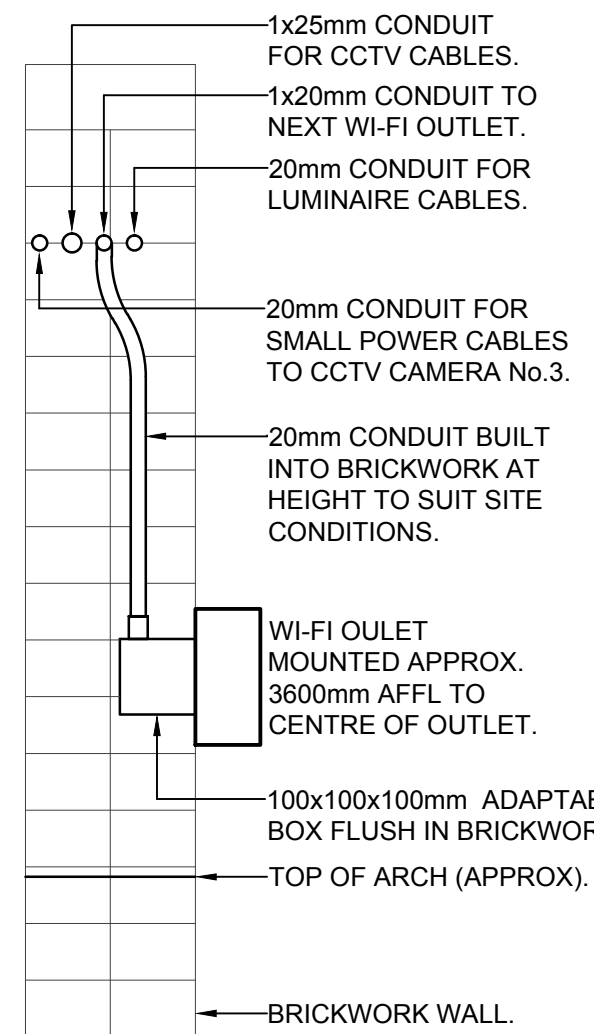
PLAN - 1:50 - SHOWING CONDUITS IN BRICKWORK ABOVE ARCHES.



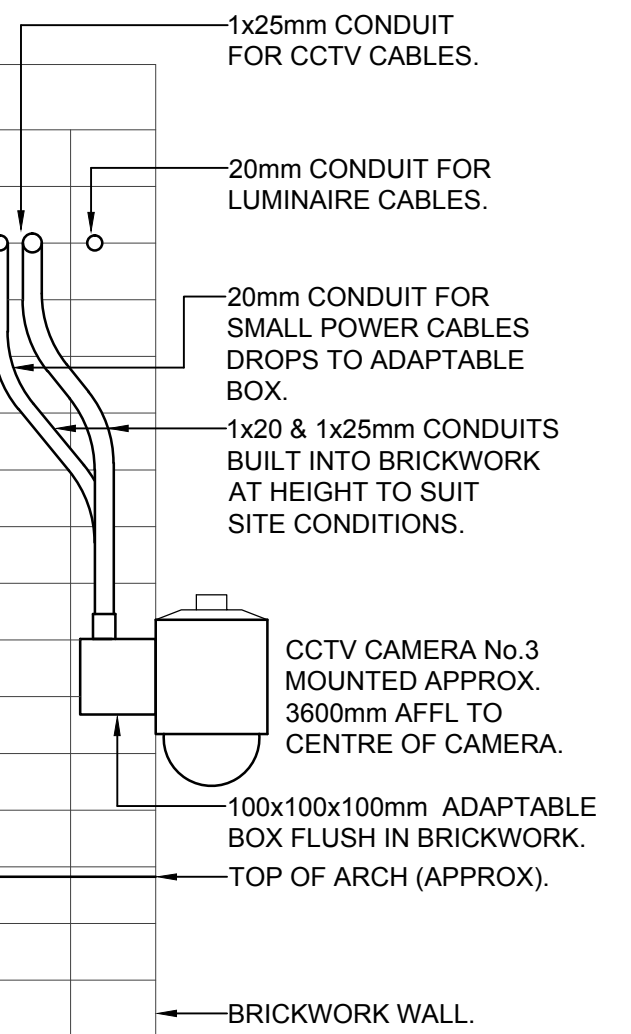
DETAIL A - SCALE 1:10.  
CONTAINMENT FOR CCTV  
CAMERA No. 4 OVER ARCH.



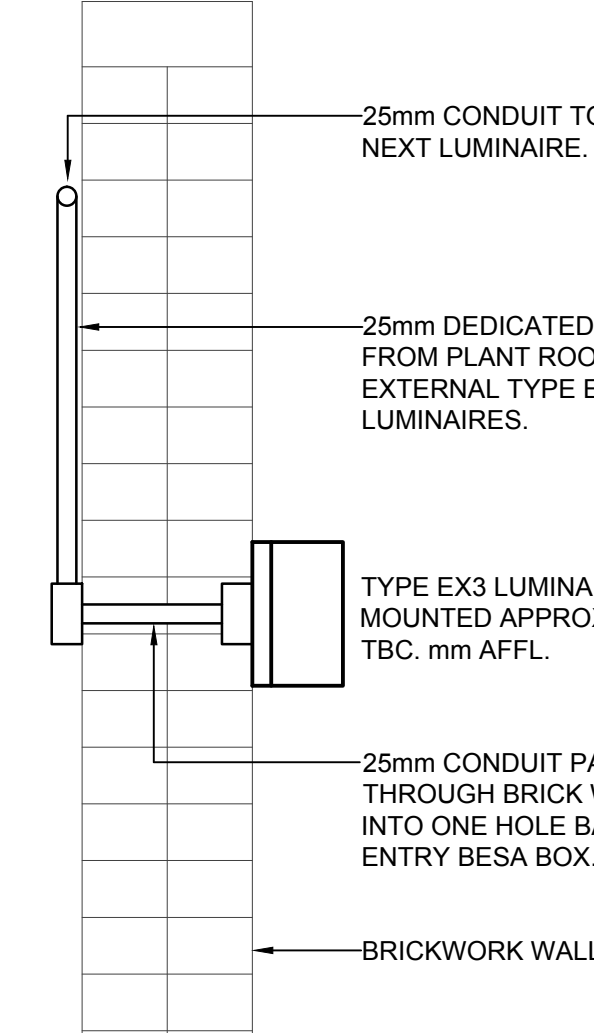
DETAIL B - SCALE 1:10.  
CONTAINMENT FOR TYPE  
EX2 LUMINAIRE OVER ARCH.



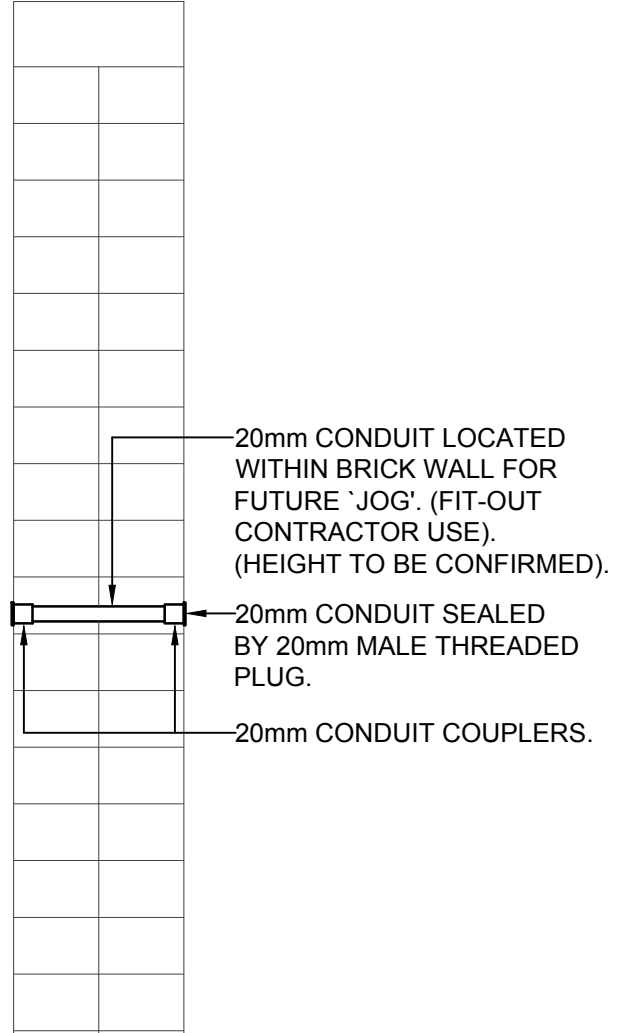
DETAIL C - SCALE 1:10.  
CONTAINMENT FOR WI-FI  
OUTLET OVER ARCH.



DETAIL D - SCALE 1:10.  
CONTAINMENT FOR CCTV  
CAMERA No. 3 OVER ARCH.



DETAIL E - SCALE 1:10.  
CONTAINMENT FOR  
TYPE EX3 LUMINAIRE.



DETAIL F - SCALE 1:10.  
CONTAINMENT FOR FUTURE  
TYPE EX2 LUMINAIRE.

DO NOT SCALE FROM THIS DRAWING

Notes

1. THIS DRAWING IS TO BE READ IN CONJUNCTION WITH ARCHITECTS & STRUCTURAL ENGINEERS DRAWINGS. THE PROJECT SCHEDULES & SPECIFICATIONS REFER TO DRAWING 4431/BAMSE/7500.

2. FOR FULL DETAILS OF EXTERNAL LUMINAIRES REFER TO THE LUMINAIRE SCHEDULE.

4. FOR TYPE EX3 LUMINAIRES A SEPARATE DEDICATED 25mm CONDUIT RUNS INTERNALLY BETWEEN LUMINAIRES & PLANT ROOM. CONDUIT TERMINATES WITHIN 150x150x150mm LIGHTING MARSHALLING BOX. ROUTE TO BE DETERMINED ON SITE.

5. FOR TYPE EX2 LUMINAIRES A 20mm CONDUIT PASSES THROUGH THE WALL FOR FUTURE SE BY 'JOG' FIT-OUT CONTRACTOR. CONDUIT TO BE PLUGGED AND SEALED BOTH ENDS BY MEANS OF 20mm BRASS CONDUIT PLUG.

6. WI-FI & CCTV AS DETAILED ON BLOCKS 1, 2 & 3 ARE FOR IDENTIFICATION PURPOSES ONLY. 1x25mm CONDUIT TO PASS THROUGH BRICKWORK FROM EXTERNAL TO INTERNAL BUILDING FOR CCTV/POWER CABLES. DEDICATED CONTAINMENT RUNS INTERNALLY OF BUILDING BETWEEN CCTV LOCATION & CCTV RACK LOCATED AT CANAL LEVEL.

7. FOR DETAILS OF LIGHTNING PROTECTION SYSTEM REFER TO PTSG DRAWINGS LP-01, LP-02 & LP-03.

8. FOR PLAN VIEW & CONTAINMENT DETAIL B OF BOLLARD LIGHTING (EX4) REFER TO DRAWING 4431/BAMSE/4608.

9. TYPE G LUMINAIRES REQUIRE BACK BOX BUILT INTO BRICKWORK TO HOUSE DRIVER UNIT.

10. FOR SMALL POWER OUTLET/POWER SUPPLIES TO CCTV Nos 3 & 4 REFER TO BAMSE SMALL POWER DRAWING 4431/BAMSE/7700-REV C1.

11. THIS TYPE G LUMINAIRE TO BE LOCATED SUCH AS TO ILLUMINATE BLOCK 2 SIDE DOOR.

key plan

Environmental Services

Cost Planning

Feasibility Study

3D Visualisation

computer sheet name

K:\01 - Projects\4431 - Kings Cross Fish & Coal Buildings\Electrical\Drawings\4431 - BAMSE-7500.dwg

Service Engineering

Centrum Business Park

Centrum Way, St Albans

Herts, AL1 2JG

Tel: 01763 784600

www.bam.co.uk

© BAM Construct UK Ltd

project

FISH & COAL  
KINGS CROSS  
CENTRAL LONDON

drawing status

CONSTRUCTION

contract no.

HLN - 0217

scale

1:100 @ A0

client ref.

date

July 15

drawn by

MDL

checked by

SMC

drawing no

4431

BAMSE

7504

C1

LONDON, 20/04/2016 11:52:08