

Do not scale from this drawing. Verify all dimensions on site. Drawing should be read in conjunction with information from all other design consultants and contractors. All drawings in digital format are for reference only, paper copies are available on request.

FOR PLANNING
Information only
© Maccreanor Lavington Architects

MATERIALS KEY

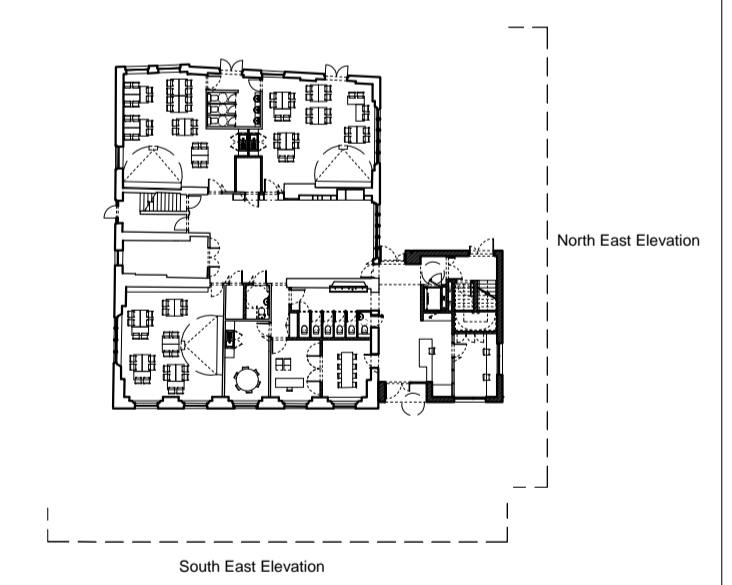
- 1 Light facing brickwork.
- 2 Full brick window reveals.
- 3 Outward opening polyester powder coated aluminium framed double glazed windows colour tbc.
- 4 Polyester powder coated aluminium framed double glazed doors colour tbc.
- 5 Polyester powder coated aluminium sill, colour tbc.
- 6 Polyester powder coated aluminium cladding, colour tbc.
- 7 Recessed Polyester powder coated metal down pipe, colour tbc.
- 8 Polyester powder coated metal gutter, colour tbc.
- 9 Polyester powder coated metal railing, colour tbc.
- 10 Polyester powder coated metal gate, colour tbc.
- 11 Metal fencing and playground gate to match existing.
- 12 Reinstatement of full window in existing building.
- 13 School Signage panel.
- 14 Polyester powder coated aluminium roof lights, colour tbc.
- 15 Toilet extract vent to vertical roof section.
- 16 Polyester powder coated metal cladding, colour tbc.
- 17 Slate tiles.



Proposed South East Elevation



Proposed North East Elevation



Rev Details Drwn Date

Holy Trinity and St Silas Primary School
Client: Holy Trinity and St Silas Primary School
Title: Proposed Building
Proposed Elevations North East and South East
Scale: 1:100 @ A1 / 1:200 @ A3
Date: 15-01-2014 Drawn: MH

MLA / 369 / P / 310

MaccreanorLavington

3rd Floor
19-21 Nile Street
London N1 7LL

t +44(0)207 336 73 53
f +44(0)207 336 76 55
e uk@ml-architects.com

