

EXISTING WINDOW TYPE A SLIDING SASH

PROPOSED WINDOW TYPE A SLIDING SASH

Do not scale from this drawing
All dimensions to be checked on site

Notes:

- Double glazed units with white spacer bars and decorative astragal fixed over.

Amendments:

Rev #. First Issue. 2016-07-20

Drawing type:

Client:
L. B. CAMDEN

Project:
LEVITA HOUSE

Title:
**EXISTING AND PROPOSED
WINDOW TYPE A**

Scale: **1:10@A3** Date: **18/07/2016**

Drawn: **JMA** Checked: **DL**

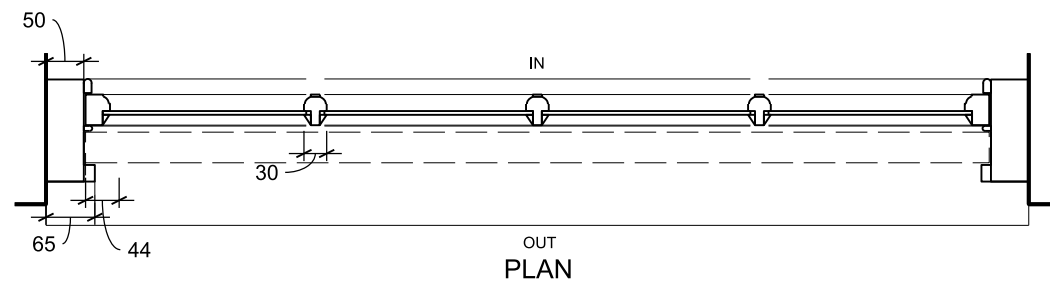
Drg.no: **5675-A(31) TYPE A** Rev: **#**

Heritage Surveys Ltd.

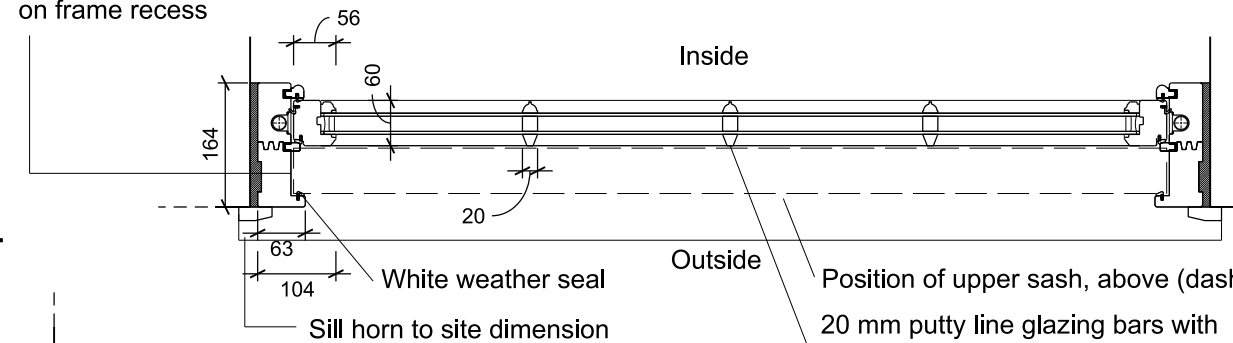
Heritage Surveys Limited
20 Hanover Square
London
W1S 1JY

www.heritage-surveys.com

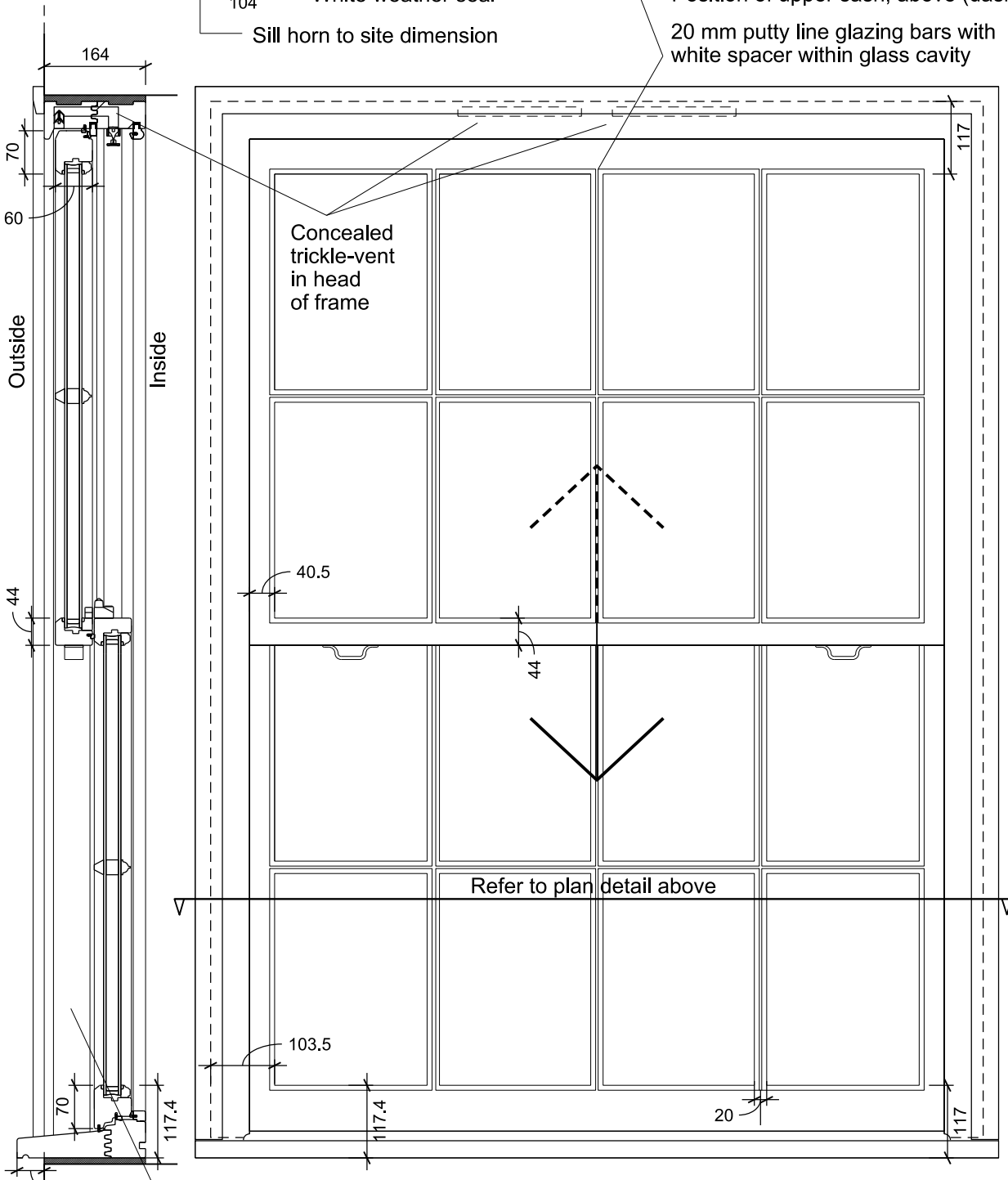
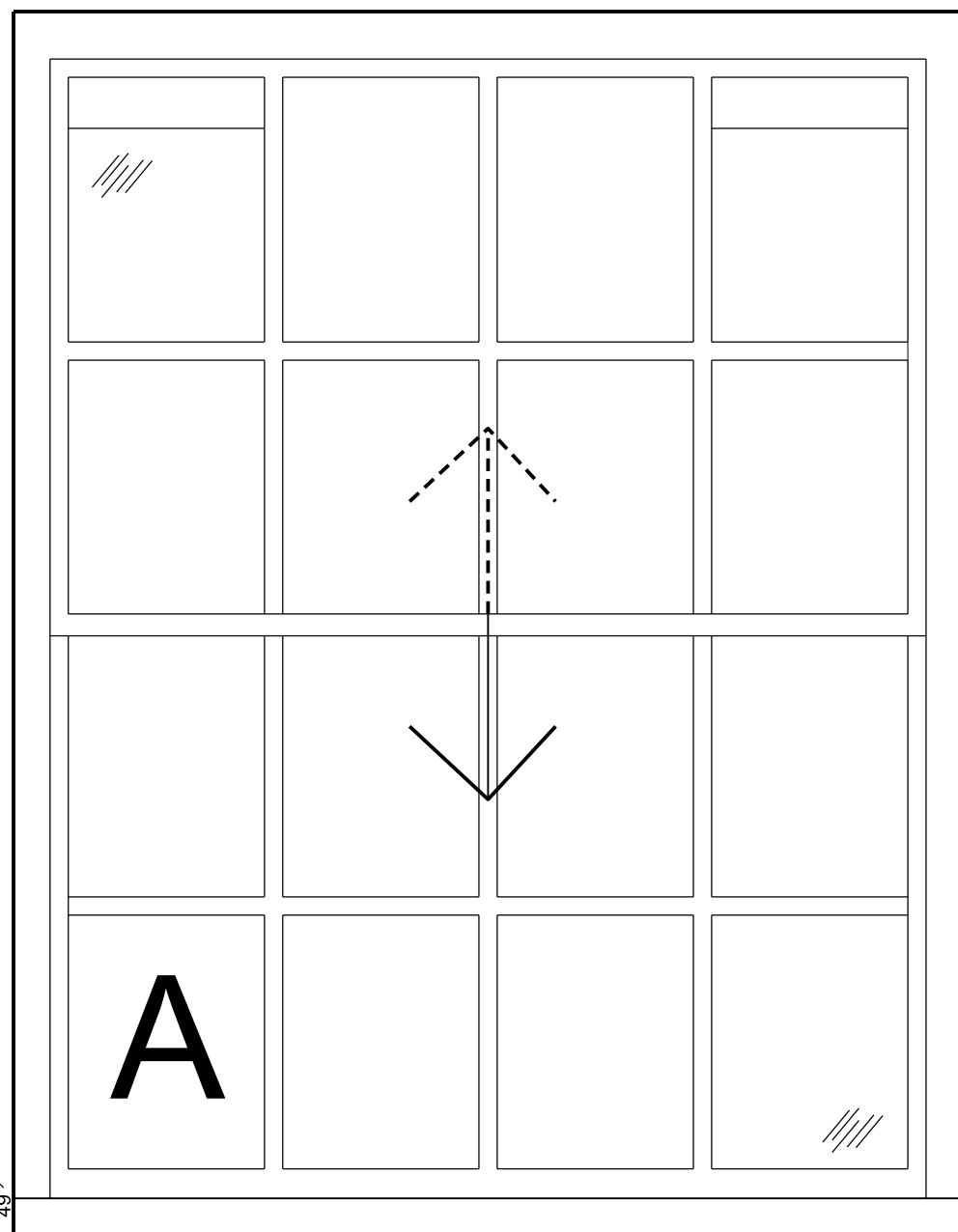
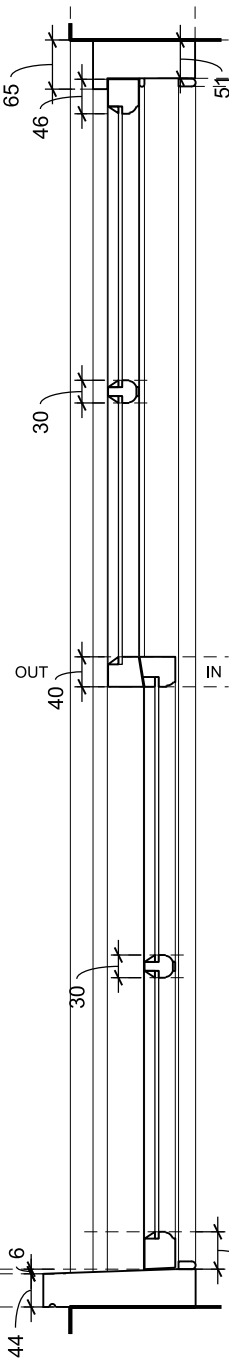
**Type A Window,
Sliding Sash**



When window is in closed position no balances visible on frame recess



SECTION



When window is in closed position no balances visible on frame recess

Refer to plan detail above

Concealed trickle-vent in head of frame