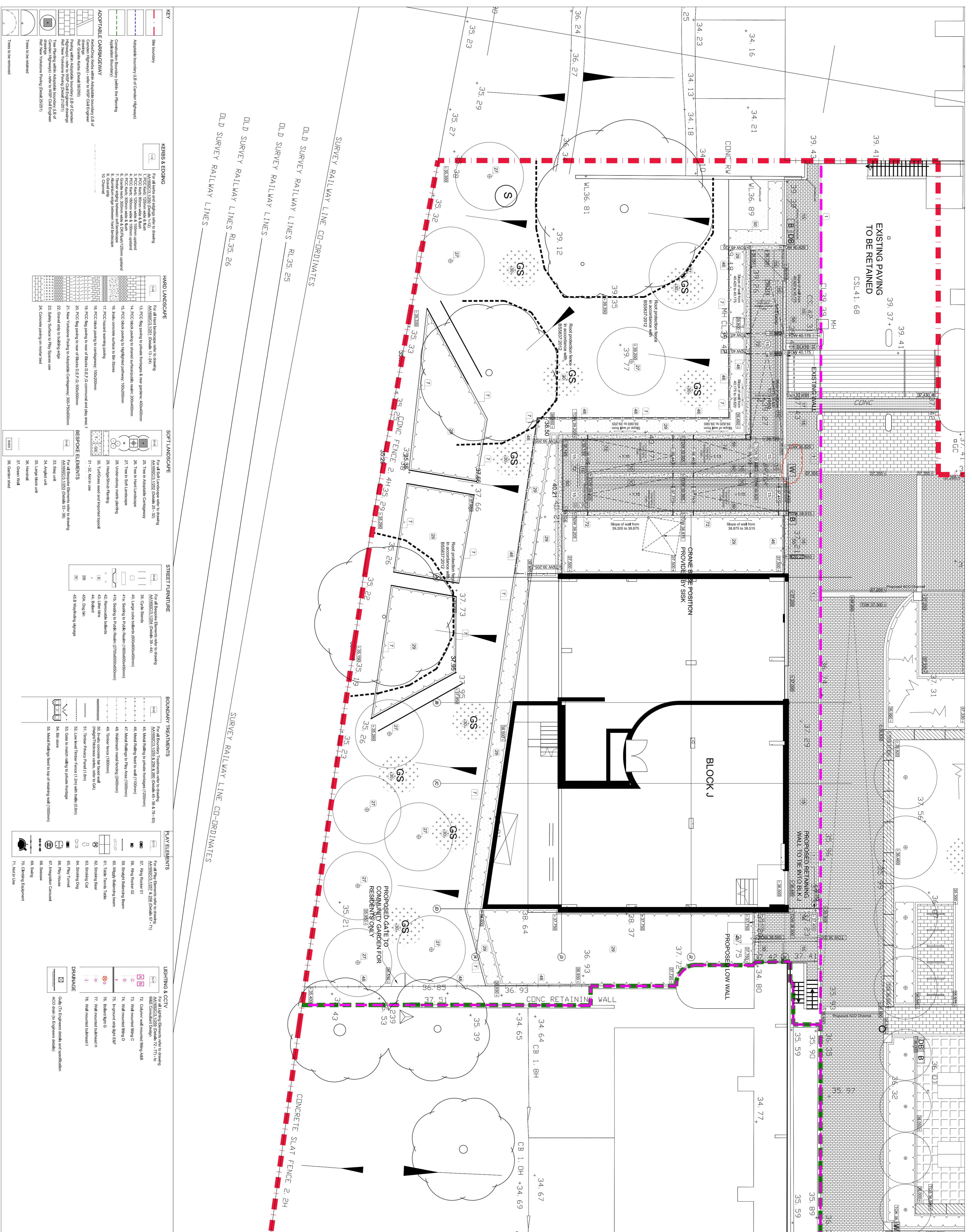
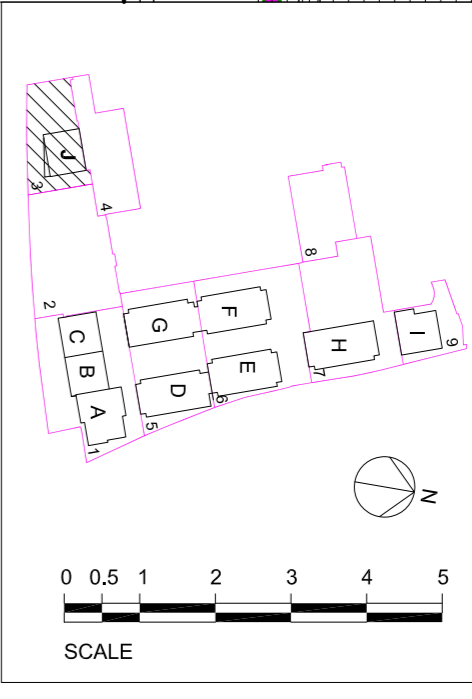


Notes

- The contractor is responsible for checking dimensions, tolerances and materials. Any discrepancy to be verified with the Architect before proceeding with the work.
- Where an item is covered by drawings to different scales the larger scale drawing is to be worked to.
- Do not scale drawing. Figured dimensions to be worked to in all cases.

CDM Regulations 2007  
 All current drawings and specifications for the project must be read in conjunction with the Designer's Hazard and Environmental Assessment Report.



KEY	ADAPTABLE CARBONFIBREWAY	KEYS & ERSING	HARD LANDSCAPE	SOFT LANDSCAPE	STREET FURNITURE	BOUNDARY TREATMENTS	PLAY ELEMENTS	LIGHTING & CCTV	DRAINAGE
<ul style="list-style-type: none"> <li>Boundary</li> <li>Adaptable boundary (LB of Carbons Highway)</li> <li>Construction boundary (within the Planning Application Boundary)</li> </ul>	<ul style="list-style-type: none"> <li>For all works and signage refer to drawing AA1692C/3.02</li> <li>1. FCC Kerbs, 120mm wide &amp; 40mm high</li> <li>2. FCC Kerbs, 120mm wide &amp; 100mm high</li> <li>3. FCC Kerbs, 120mm wide &amp; 150mm high</li> <li>4. FCC Kerbs, 150mm wide &amp; 100mm high</li> <li>5. FCC Kerbs, 150mm wide &amp; 150mm high</li> <li>6. Concrete kerbs, 120mm wide &amp; 100mm high</li> <li>7. Concrete kerbs, 150mm wide &amp; 100mm high</li> <li>8. Concrete kerbs, 150mm wide &amp; 150mm high</li> <li>9. Concrete kerbs, 120mm wide &amp; 150mm high</li> <li>10. Concrete kerbs, 150mm wide &amp; 150mm high</li> </ul>	<ul style="list-style-type: none"> <li>For all kerbs and signage refer to drawing AA1692C/3.02</li> <li>1. FCC Kerbs, 120mm wide &amp; 40mm high</li> <li>2. FCC Kerbs, 120mm wide &amp; 100mm high</li> <li>3. FCC Kerbs, 120mm wide &amp; 150mm high</li> <li>4. FCC Kerbs, 150mm wide &amp; 100mm high</li> <li>5. FCC Kerbs, 150mm wide &amp; 150mm high</li> <li>6. Concrete kerbs, 120mm wide &amp; 100mm high</li> <li>7. Concrete kerbs, 150mm wide &amp; 100mm high</li> <li>8. Concrete kerbs, 150mm wide &amp; 150mm high</li> <li>9. Concrete kerbs, 120mm wide &amp; 150mm high</li> <li>10. Concrete kerbs, 150mm wide &amp; 150mm high</li> </ul>	<ul style="list-style-type: none"> <li>For all soft landscaping refer to drawing AA1692C/3.02</li> <li>1. Tree in Adaptable Carbons Highway</li> <li>2. Tree in Adaptable Carbons Highway</li> <li>3. Tree in Adaptable Carbons Highway</li> <li>4. Tree in Adaptable Carbons Highway</li> <li>5. Tree in Adaptable Carbons Highway</li> <li>6. Tree in Adaptable Carbons Highway</li> <li>7. Tree in Adaptable Carbons Highway</li> <li>8. Tree in Adaptable Carbons Highway</li> <li>9. Tree in Adaptable Carbons Highway</li> <li>10. Tree in Adaptable Carbons Highway</li> </ul>	<ul style="list-style-type: none"> <li>For all Street Furniture refer to drawing AA1692C/3.02</li> <li>1. Bench</li> <li>2. Bench</li> <li>3. Bench</li> <li>4. Bench</li> <li>5. Bench</li> <li>6. Bench</li> <li>7. Bench</li> <li>8. Bench</li> <li>9. Bench</li> <li>10. Bench</li> </ul>	<ul style="list-style-type: none"> <li>For all Boundary Treatments refer to drawing AA1692C/3.02</li> <li>1. Metal cladding to brick wall (1500mm)</li> <li>2. Metal cladding to brick wall (1500mm)</li> <li>3. Metal cladding to brick wall (1500mm)</li> <li>4. Metal cladding to brick wall (1500mm)</li> <li>5. Metal cladding to brick wall (1500mm)</li> <li>6. Metal cladding to brick wall (1500mm)</li> <li>7. Metal cladding to brick wall (1500mm)</li> <li>8. Metal cladding to brick wall (1500mm)</li> <li>9. Metal cladding to brick wall (1500mm)</li> <li>10. Metal cladding to brick wall (1500mm)</li> </ul>	<ul style="list-style-type: none"> <li>For all Play Elements refer to drawing AA1692C/3.02</li> <li>1. Ring Rider (1)</li> <li>2. Ring Rider (2)</li> <li>3. Ring Rider (3)</li> <li>4. Ring Rider (4)</li> <li>5. Ring Rider (5)</li> <li>6. Ring Rider (6)</li> <li>7. Ring Rider (7)</li> <li>8. Ring Rider (8)</li> <li>9. Ring Rider (9)</li> <li>10. Ring Rider (10)</li> </ul>	<ul style="list-style-type: none"> <li>For all Lighting &amp; CCTV refer to drawing AA1692C/3.02</li> <li>1. Wall mounted lighting A</li> <li>2. Wall mounted lighting B</li> <li>3. Wall mounted lighting C</li> <li>4. Wall mounted lighting D</li> <li>5. Wall mounted lighting E</li> <li>6. Wall mounted lighting F</li> <li>7. Wall mounted lighting G</li> <li>8. Wall mounted lighting H</li> <li>9. Wall mounted lighting I</li> <li>10. Wall mounted lighting J</li> </ul>	<ul style="list-style-type: none"> <li>For all Drainage refer to drawing AA1692C/3.02</li> <li>1. Gully</li> <li>2. Gully</li> <li>3. Gully</li> <li>4. Gully</li> <li>5. Gully</li> <li>6. Gully</li> <li>7. Gully</li> <li>8. Gully</li> <li>9. Gully</li> <li>10. Gully</li> </ul>	

drawing no	AA1692C/3.1/2/12	rev	C
drawn	PW	checked	AJ
scale	at 1/100	date	MAR 2014
<p>purpose of Issue</p> <p>CONSTRUCTION</p> <p>project</p> <p>MAIDEN LANE</p>			
<p>EXTERNAL WORKS:</p> <p>GENERAL ARRANGEMENT 3</p> <p>BLOCK J</p>			
<p>15.05.15 C Work/finishing signage added HS</p> <p>25.03.15 B Ramp shortened to avoid construction of new walls next to existing garden walls. Litter bins and dog bins added. HSAU</p> <p>01.10.14 A CONSTRUCTION Issue</p> <p>03.04.14 A First Issue for DT Co-ordination &amp; Comment</p>			
date	rev	revision/author/checker	

PIR Architects  
 10 Ludlow Street  
 London  
 EC1A 9HP  
 T +44 (0)20 7453 1200  
 F +44 (0)20 7453 1201  
 www.pirarchitects.co.uk