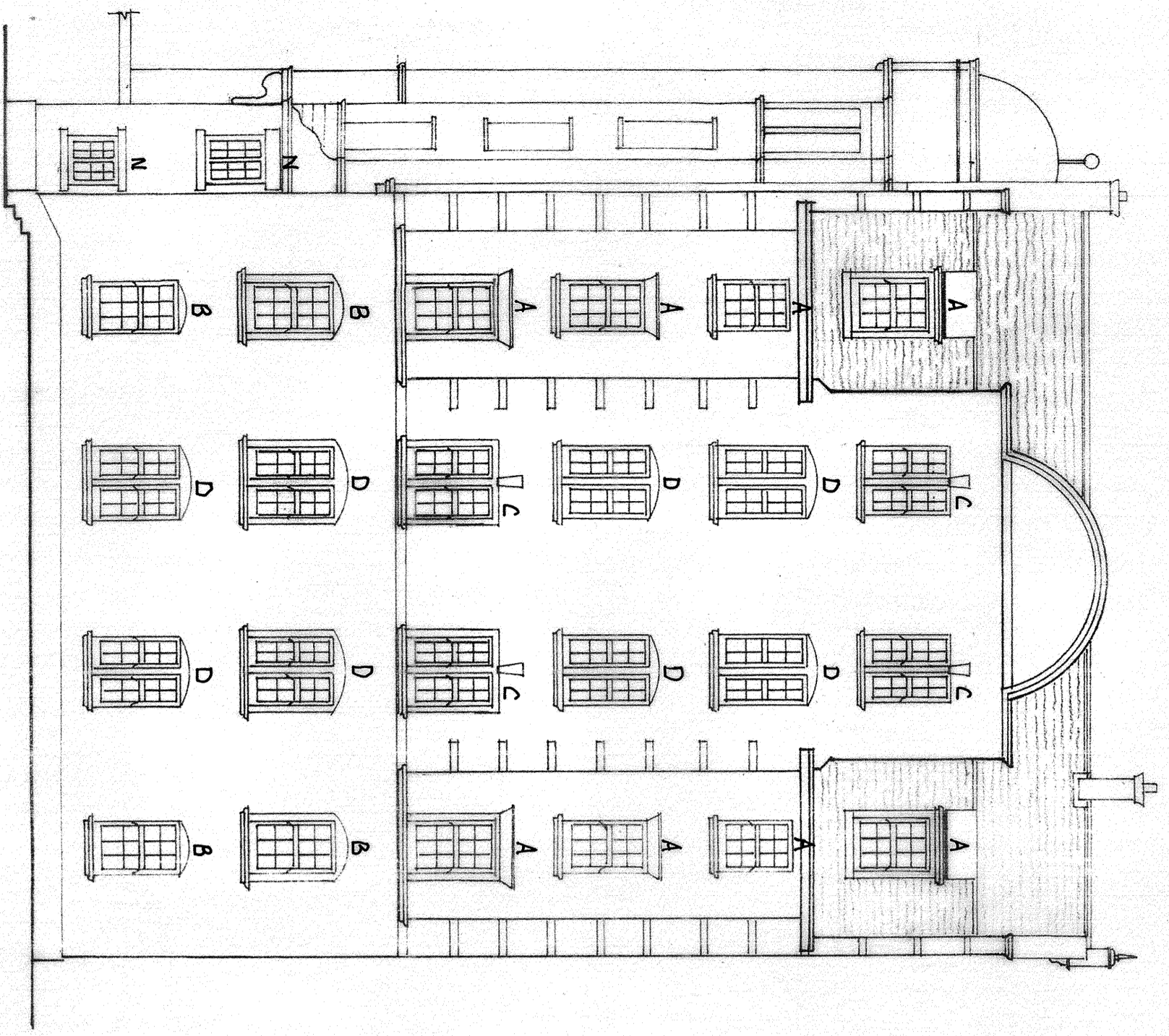
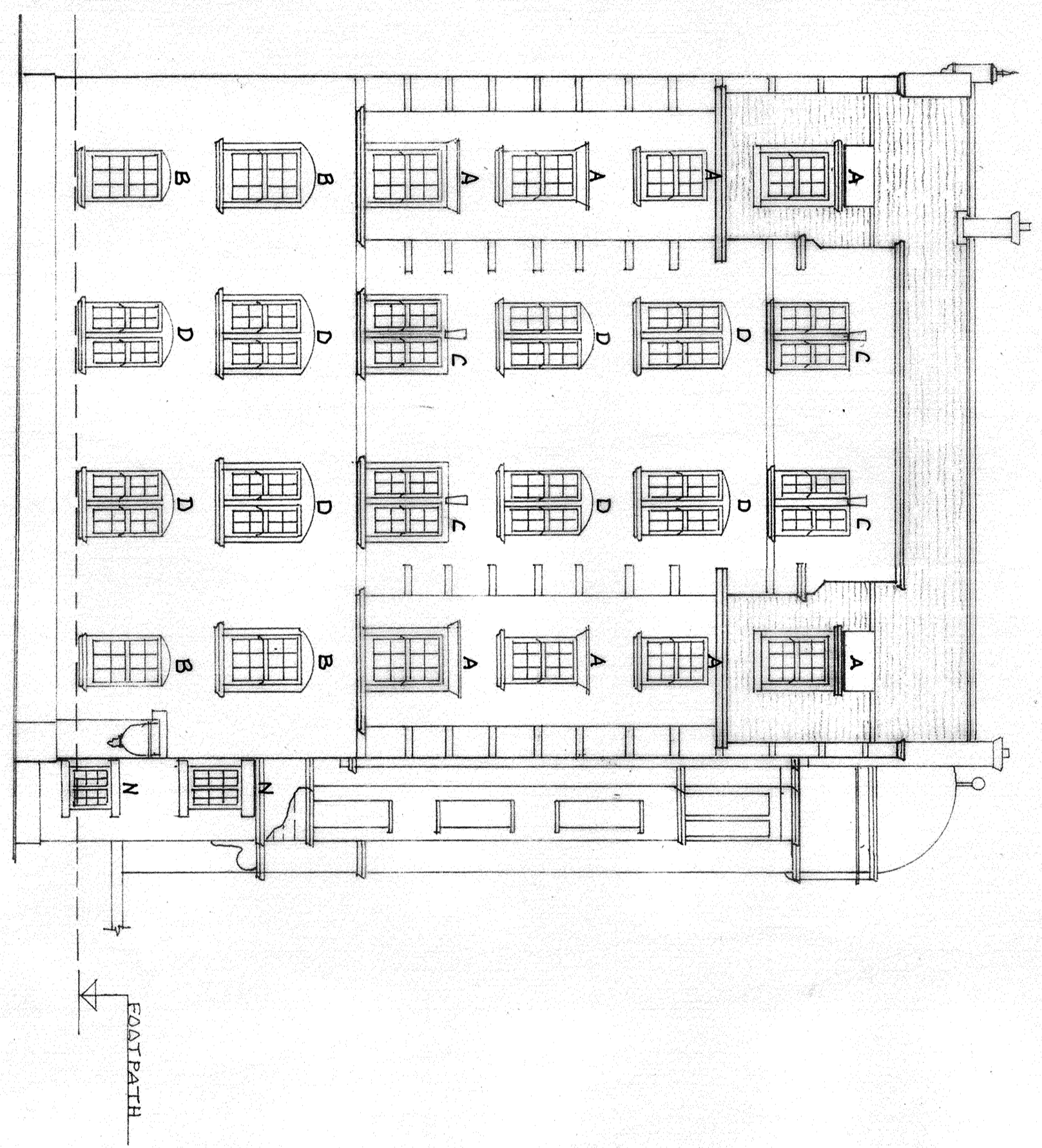


FRONT ELEVATION 'A'

ALL EXISTING ENTRANCE
DOORS TO REMAIN



SIDE ELEVATION 'B'



SIDE ELEVATION 'C'

NOTES

1. ALL WINDOWS ARE TO BE REPLACED USING FRAMING MATERIALS AS EXISTING (WITH THE EXCEPT OF EXISTING REPLACEMENT ALUMINIUM FRAMED WINDOWS - THESE REPLACED WITH TIMBER FRAMES).
2. ALL STRUCTURAL OPENINGS TO REMAIN AS EXISTING.
3. ALL FEATURE IRONWORK TO STONE CHIPS (NOT SHOWN FOR REASONS OF CLARITY) TO REMAIN.
4. PATTERN AND OPENING LIGHT TYPES/CONFIGURATIONS OF REPLACEMENT WINDOWS TO BE AS EXISTING, (SEE ARDEN WINDOWS LTD. DRAWINGS PH921-SHEET 01 A-1 ISSUE C, PH921-SHEET 2 - ISSUE A, AW VS CON. ASSY-SHEET 12. AND AW VS CON. ASSY - SHEET 1).
5. TIMBER FRAMED WINDOWS GLAZED CLEAR WITH 28mm THICK DOUBLE GLAZED UNITS, COMPRISING 2 LEAFS 4m TOUGHENED GLASS WITH A 20mm ARGON GAS FILLED CAVITY, WITH LOW E COATING TO INTERNAL SURFACE OF GLASS.
6. TIMBER FRAMES AND SASHES TO BE TREATED WITH A WATER BASED PRESERVATIVE TREATMENT APPLIED BY IMMERSION COAT, FOLLOWED BY A MINIMUM ONE COAT BASECOAT PRIMER AND TWO FURTHER COATS OF FACTORY APPLIED MICROPOROUS PAINT FINISH - COLOUR - WHITE. DRY PAINT FINISH TO BE BETWEEN 60-100 MICRONS TO A 30% SILK GLASS LEVEL.
7. ANY DISTURBED FINISHES TO BE MADE GOOD TO APPROVED STANDARD.

WINDOW REFERENCES - SEE MESSRS ARDEN WINDOWS LTD DRAWING PH921-SHEET 1 REV A-1 ISSUE C

READ IN CONJUNCTION WITH DRAWING NO. 0415/422-02

REPLACEMENT OF WINDOWS AT
FLATS 1-86 FLAXMAN COURT,
FLAXMAN TERRACE, LONDON
WC1H 9AR

MAY 2015
SCALE 1:100
@ A1 SIZE
0415/422-01c

ELEVATIONS AS PROPOSED

SHEET 1

DATE	19/07/15	PRELIM ISSUE
DATE	19/07/15	ISSUE BUILDING
DATE	19/07/15	CONSULT 1500E A
DATE	19/07/15	CONSULT 1500E B
DATE	19/07/15	CONSULT 1500E C
DATE	19/07/15	CONSULT 1500E D
DATE	19/07/15	CONSULT 1500E E
DATE	19/07/15	CONSULT 1500E F
DATE	19/07/15	CONSULT 1500E G
DATE	19/07/15	CONSULT 1500E H
DATE	19/07/15	CONSULT 1500E I
DATE	19/07/15	CONSULT 1500E J
DATE	19/07/15	CONSULT 1500E K
DATE	19/07/15	CONSULT 1500E L
DATE	19/07/15	CONSULT 1500E M
DATE	19/07/15	CONSULT 1500E N
DATE	19/07/15	CONSULT 1500E O
DATE	19/07/15	CONSULT 1500E P
DATE	19/07/15	CONSULT 1500E Q
DATE	19/07/15	CONSULT 1500E R
DATE	19/07/15	CONSULT 1500E S
DATE	19/07/15	CONSULT 1500E T
DATE	19/07/15	CONSULT 1500E U
DATE	19/07/15	CONSULT 1500E V
DATE	19/07/15	CONSULT 1500E W
DATE	19/07/15	CONSULT 1500E X
DATE	19/07/15	CONSULT 1500E Y
DATE	19/07/15	CONSULT 1500E Z