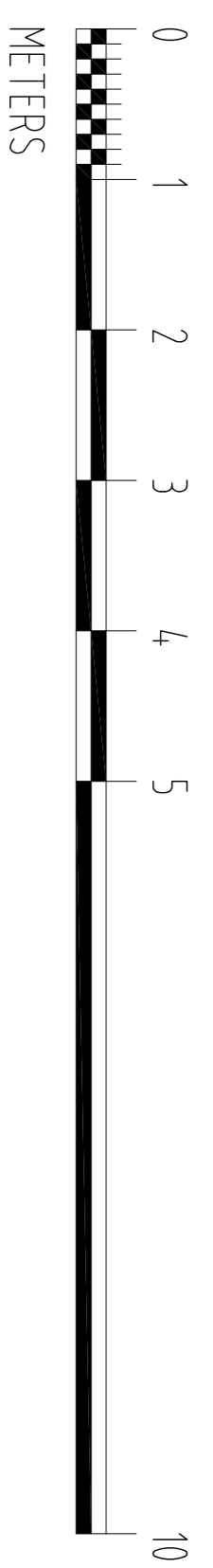
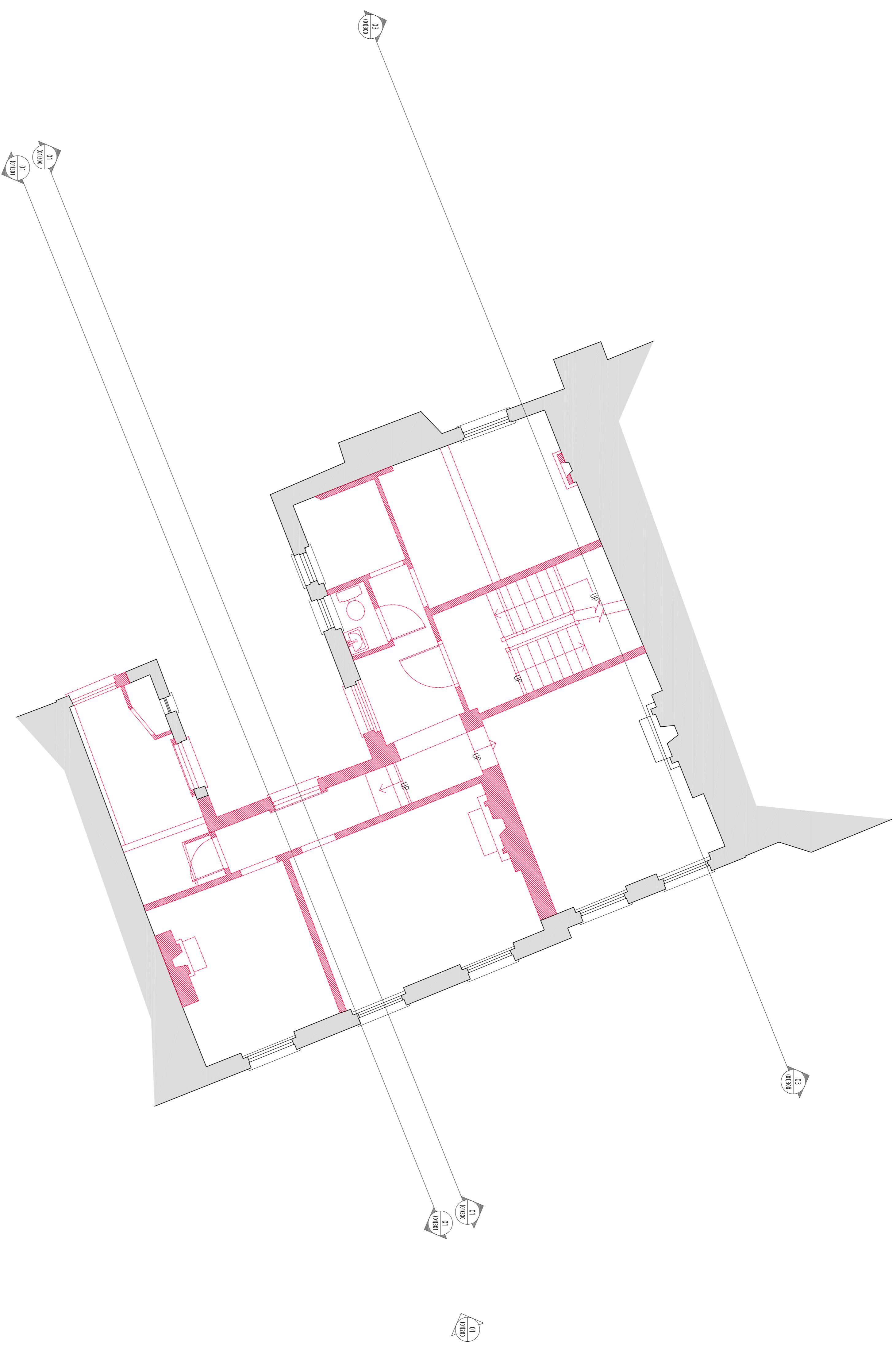


KEY
 ■ DEMOLISH EXISTING OR DEMOLITION
 DEMOLISH EXISTING OR ITEM
 TO BE DEMOLISHED



REV	ISSUE DATE	REVISION NOTES
A	2016.07.22	Issued for Planning
-	2016.06.29	Issued for information

GENERAL NOTES
 Do not scale. All written dimensions must be checked on this before work commences. Dimensions, where applicable, must be reported to the Architect immediately.
 Any areas indicated on this drawing are for guidance purposes only. No responsibility is taken for their accuracy.
 All work must be carried out in accordance with the Building Regulations and to the satisfaction of the Local Authority.

PLANNING

Garrett+Partners LLP
 Holborn Hall
 195 High Holborn
 London WC1V 7BD
 Tel: +44 (0)20 7404 7677
 Fax: +44 (0)20 7404 6648
 mail@garnetpartners.com
 www.garnetpartners.com

**GARNETT
 +PARTNERS**
architects / planners / designers

CLIENT
 Calabar Properties Ltd

PROJECT
 11-12 Grenville Street, WC1

DRAWING TITLE
 Second Floor Plan
 As Existing With Demolitions

SCALE	DATE
1:50@A1	June '16

DWG NO	REV
790	A