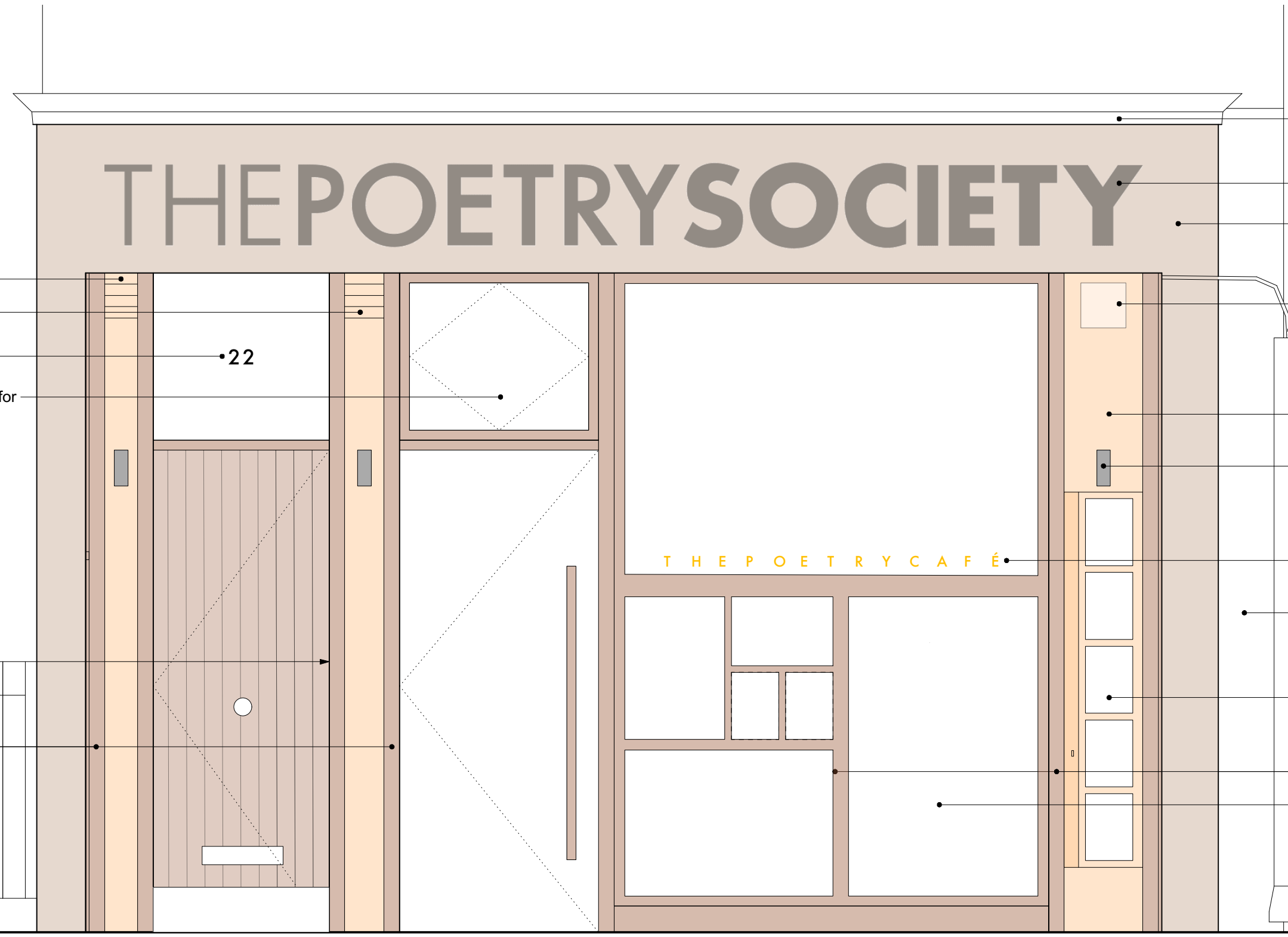


Notes:



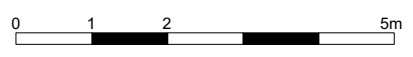
Ventilation to gas meter cupboard
 Ventilation to WCs
 Lettering - font to match sign
 Centre pivot timber framed window for ventilation to Cafe operated by window pole and hook and catch - check insurers

Doorbell intercom panel on return
 Brushed SS face plate
 TBC whether re-use existing
 Oiled natural timber framing

Existing lead capping made good
 Painted lettering tbc
 Existing render made good and repainted a lighter shade colour tbc
 Alarm box
 Existing electrical supply - assumed - check on site whether the cable can be re-routed behind the render
 Pilaster panels - paper/cloth type material tbc
 3 no. new external wall lights - type tbc - steel cylindrical up and down lighters as a welcome signal (not to light the street)
 Vinyl lettering on glass tbc
 Hydrant sign as existing and new cigarette stub bin to be fixed on brickwork, not on render
 Glazed metal framed notice board with secure lock and key, pinboard, opened from street side, weatherproof
 Oiled natural timber framing
 Toughened/Laminated glazing suitable for shop front tbc

DG1
 Solid T&G faced timber door sealed
 Brushed SS knob, Secure lock
 Brushed SS 360w letter plate and indoor flap
 Brushed SS foot plate

DG2
 Frameless glass door
 recessed floor spring with closer and stand open
 secure lock
 timber shaped bar handle



Poetry Society Offices and Poetry Café Ground Floor Elevation - Cafe Window

Mills Power

REVISIONS:
 A 25.07.16 DRAFT ISSUED FOR PRICING
 B 28.07.16 ISSUED FOR PRICING

NOTES:
 DO NOT SCALE FROM THIS DRAWING
 ALL DIMENSIONS TO BE VERIFIED ON SITE

ASSEMBLY

POETRY SOCIETY

1:20 @ A3

049-711

www.millspower.com 52 Summerlee Avenue London N2 9QP 07734 591972