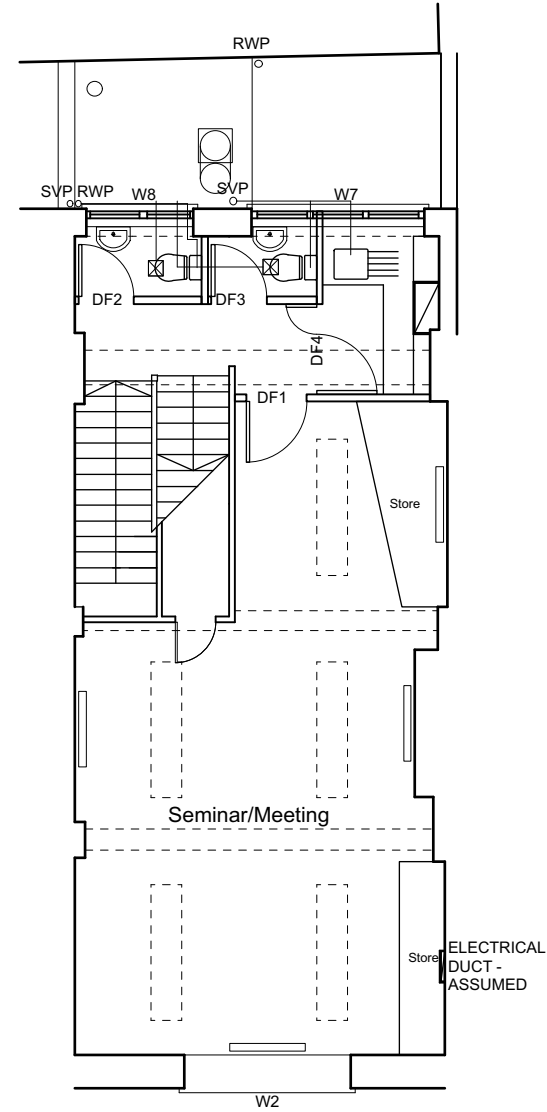
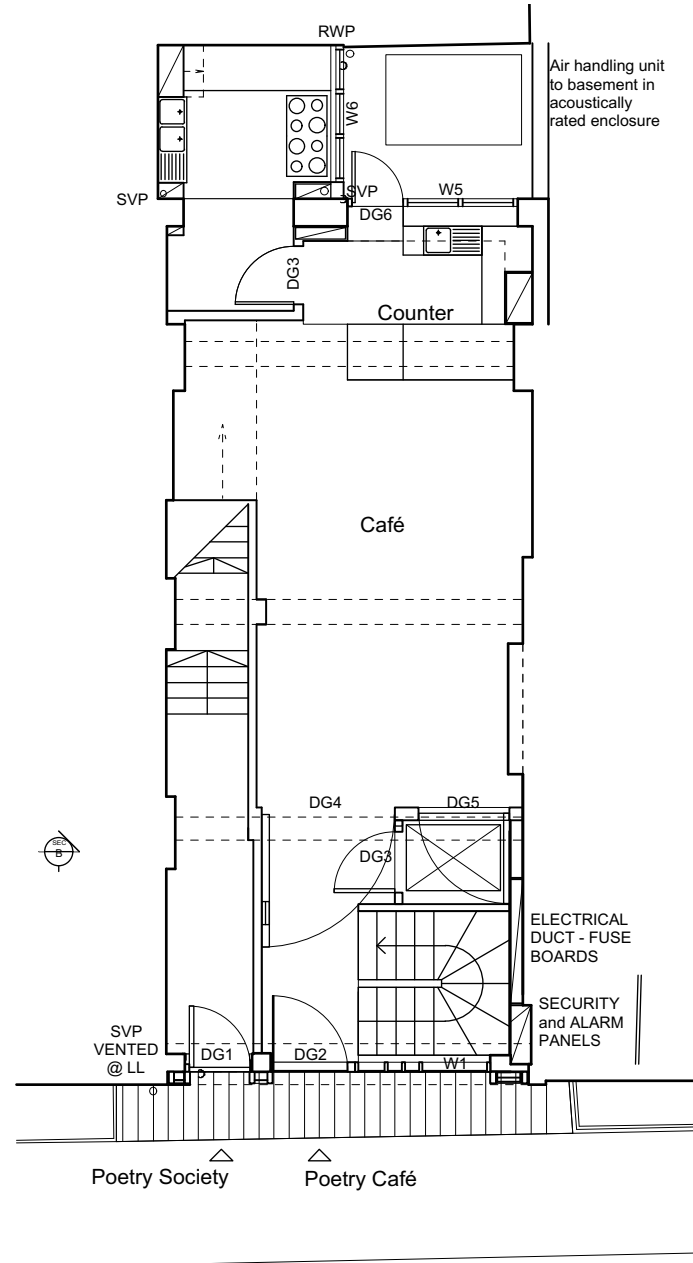
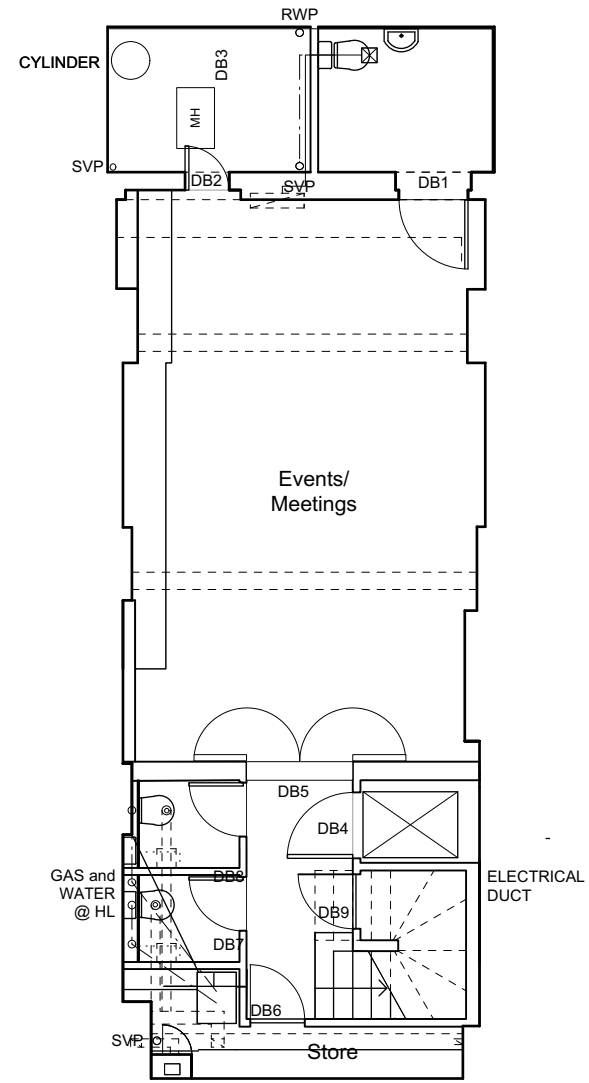


**Notes:**

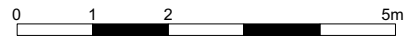
Poetry Society  
 22 Betterton Street  
 London  
 WC2H 9BX



**Basement**  
**Venue**  
 Capacity up to 60  
 (Seated capacity 46)

**Ground Floor**  
**Café**  
 Seating capacity up to 20

**First Floor**  
**Meeting/Seminar**



**Poetry Society Offices and Poetry Café**

**Mills Power**

REVISIONS:  
 - 09.10.15 DRAFT FOR CBT - NOTE ANNOTATIONS NOT UPDATED  
 - 30.11.15 DRAFT REVISIONS  
 C.28.06.16 ISSUED FOR PLANNING

NOTES:  
 DO NOT SCALE FROM THIS DRAWING  
 ALL DIMENSIONS TO BE VERIFIED ON SITE

PROPOSED PLANS

POETRY SOCIETY

1:100 @ A3

049-061

www.millspower.com 52 Summerlee Avenue London N2 9QP 07734 591972