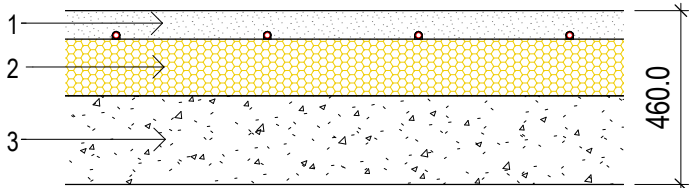


FLOOR TYPE 01

GROUND FLOOR

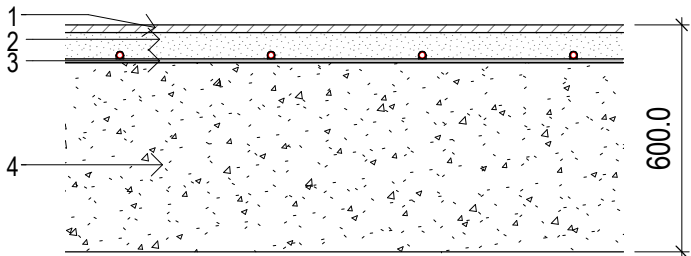
- 1. 75mm Screed with Underfloor Heating
- 2. 150mm Insulation
- 3. 235mm Concrete Slab



FLOOR TYPE 02

FIRST FLOOR

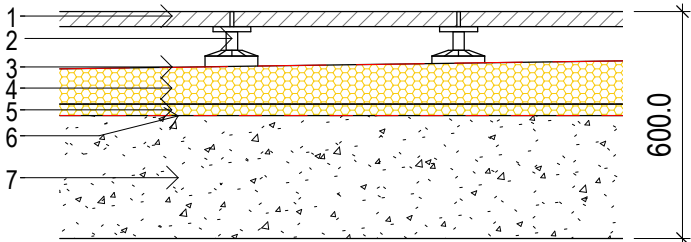
- 1. 20mm Timber Flooring
- 2. 70mm Screed with Underfloor Heating
- 3. 10mm Collecta YELOfon HD10+
- 4. 500mm Concrete Slab



FLOOR TYPE 03

FIRST FLOOR (EXTERNAL)

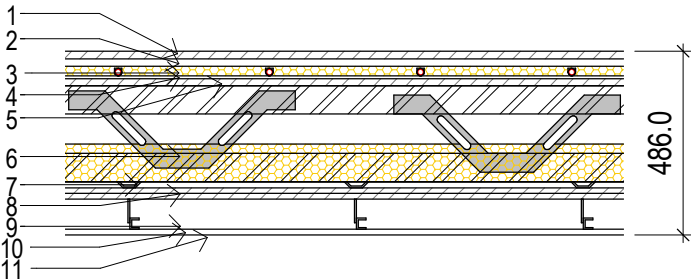
- 1. 40mm Paving Slabs
- 2. Adjustable Paving Supports
- 3. GRP Liquid Membrane
- 4. Insulation Laid to Fall (1:80)
- 5. 30mm Insulation
- 6. Vapour Control Layer
- 7. 325mm Concrete Slab



FLOOR TYPE 04

SECOND & THIRD FLOORS

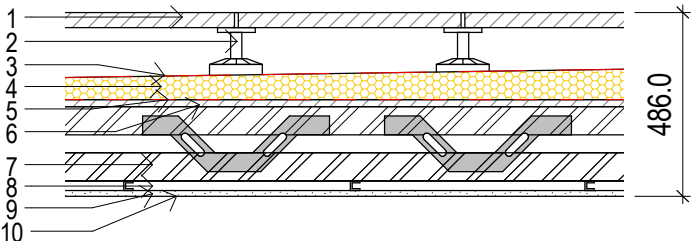
- 1. 20mm Timber Flooring
- 2. 20mm Screed Board
- 3. 25mm Underfloor Heating Thermal Insulation
- 4. 8mm Acoustic Layer
- 5. 18mm Board
- 6. 254mm Timber Joist System with Metal Web Brackets
- 7. 16mm Resilient Bar
- 8. 2 x 15mm Plasterboard
- 9. 80mm Service Void
- 10. 15mm Plasterboard
- 11. Plaster Skim Coat



FLOOR TYPE 05

SECOND & THIRD FLOORS (EXTERNAL)

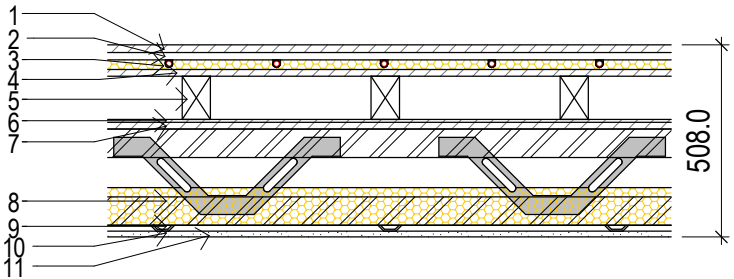
- 1. 40mm Paving Slabs
- 2. Adjustable Paving Supports
- 3. GRP Liquid Membrane
- 4. Insulation Laid to Fall (1:80)
- 5. 30mm
- 5. Vapour Control Layer
- 6. 18mm Board
- 7. 197mm Timber Joist System with Metal Web Brackets
- 8. 25mm Cavity
- 9. 15mm Plasterboard
- 10. Plaster Skim Coat



FLOOR TYPE 06

FOURTH FLOOR

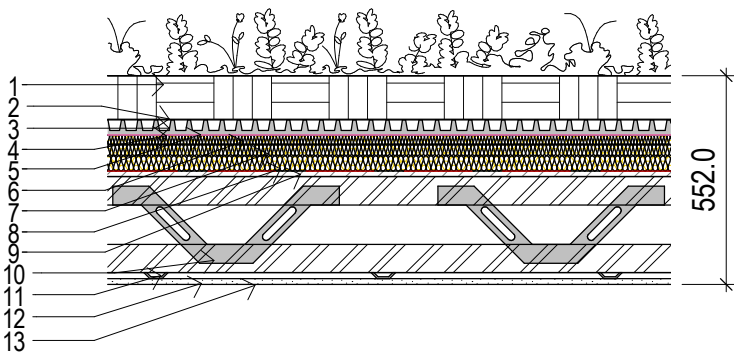
- 1. 20mm Timber Flooring
- 2. 20mm Screed Board
- 3. 25mm Underfloor Heating Thermal Insulation
- 4. 18mm Board
- 5. 132mm Cavity with Timber Joists
- 6. 8mm Acoustic Layer
- 7. 18mm Board
- 8. 254mm Timber Joist System with Metal Web Brackets
- 9. 16mm Resilient Bar
- 10. 15mm Plasterboard
- 11. Plaster Skim Coat



FLOOR TYPE 07

FOURTH FLOOR (GREEN ROOF)

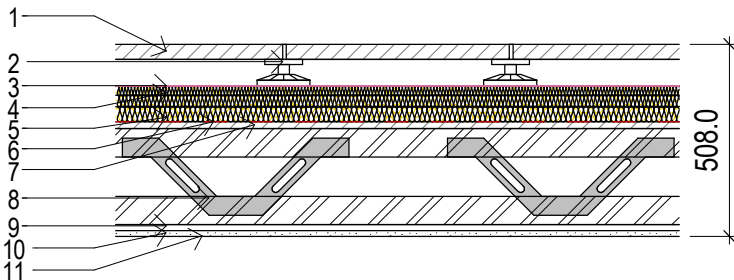
- 1. 100mm Growing Medium
- 2. 2mm Filter Layer
- 3. 40mm Drainage Board
- 4. Protection Fleece, Foil Layer, Root Resistant, Capping Sheet, Underlayer
- 5. GRP Liquid Membrane
- 6. 25mm Tapered Insulation
- 7. 70mm Insulation
- 8. Vapour Control Layer
- 9. 15mm Board
- 10. 254mm Timber Joist System with Metal Web Brackets
- 11. 16mm Resilient Bar
- 12. 15mm Plasterboard
- 13. Plaster Skim Coat



FLOOR TYPE 08

FOURTH FLOOR (TERRACE)

- 1. 40mm Paving Slabs
- 2. Adjustable Paving Supports
- 3. GRP Liquid Membrane
- 4. Tapered 25mm Insulation
- 5. 70mm Insulation
- 6. Vapour Control Layer
- 7. 18mm Board
- 8. 254mm Timber Joist System with Metal Web Brackets
- 9. 16mm Resilient Bar
- 10. 15mm Plasterboard
- 11. Plaster Skim Coat



NOTES

DO NOT SCALE DIMENSIONS OFF THIS DRAWING
CHECK ALL DIMENSIONS ON SITE BEFORE FABRICATION
REPORT ALL ERRORS OR OMISSIONS TO SPRINT LIMITED
ANY DISCREPENCY TO BE VERIFIED WITH SPRINT LIMITED BEFORE
PROCEEDING WITH THE WORKS
THIS DRAWING IS PROTECTED UNDER COPYRIGHT AND
SHALL NOT BE REPRODUCED IN PART OR WHOLE WITHOUT PRIOR
EXPRESSED PERMISSION OF SPRINT LIMITED

CDM 2015

ALL CURRENT DRAWINGS AND SPECIFICATIONS FOR THE
PROJECT MUST BE READ IN CONJUNCTION WITH THE
DESIGNER'S HAZARD AND ENVIRONMENT ASSESSMENT
RECORD

4.1	JS	18.07.16	2nd Tender Issued
REV	BY	DATE	DESCRIPTION
STATUS			
STAGE 4 - FOR TENDER			
CONTRACTOR			
PROJECT			
12456 - 81a/b BAYHAM STREET			
CLIENT			
REV 1			
DRAWING TITLE			
Floor Types			
DATE CREATED	DATE AMENDED	SCALE	
11.07.16	18.07.16	1 : 20@A3	
DRAWN BY	AMENDED BY	CHECKED	
JP	JS	JK	
DRAWING NO & REVISION			
12456-SPR-RES-40_04-4_1			
First Floor, 20 Northdown Street London N1 9BG			
T +44 (0)20 7833 3555 F +44 (0)20 7837 0296			