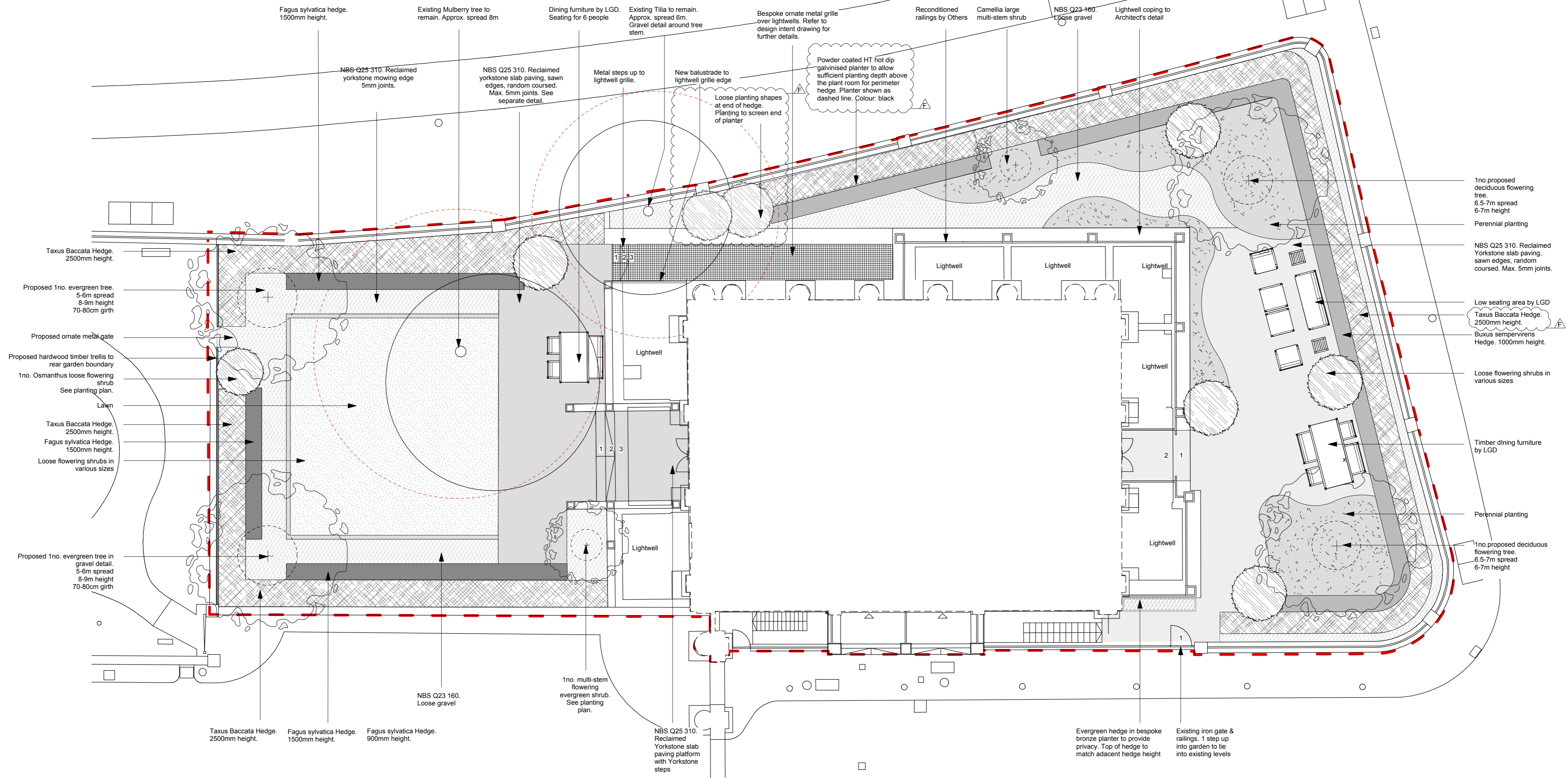


**Legend**

- Site Boundary
- Existing Tree to be Retained
- Root Protection Area (RPA)



**Notes:**  
 All landscape materials specified should;  
 - Not be deleterious to health and safety; or  
 - Not adversely affect performance or durability in the particular circumstances in which they are used;  
 - Comply with the relevant British or European Standards (where applicable);  
 - Comply with the relevant codes of practice or applicable Agreement Certificates;  
 - Comply with good garden design practice; or  
 - Comply with the guide "Good Practice in the Selection of Construction Materials 2011" (March 2011) (British Council for Offices) or the BRE Digest

REV F Loose shapes added at end of buxus hedge 09/03/16 LR  
 REV E Trellis and metal steps added to south garden, step up into north garden added 03/11/15 GC  
 REV D Ivy riser and screens for south garden omitted 02/09/15 AN

