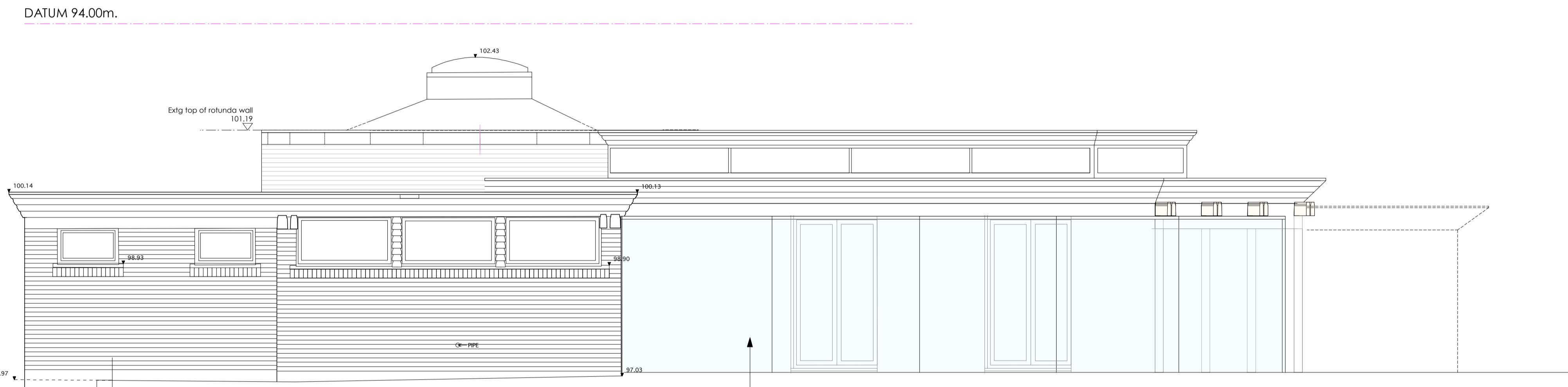
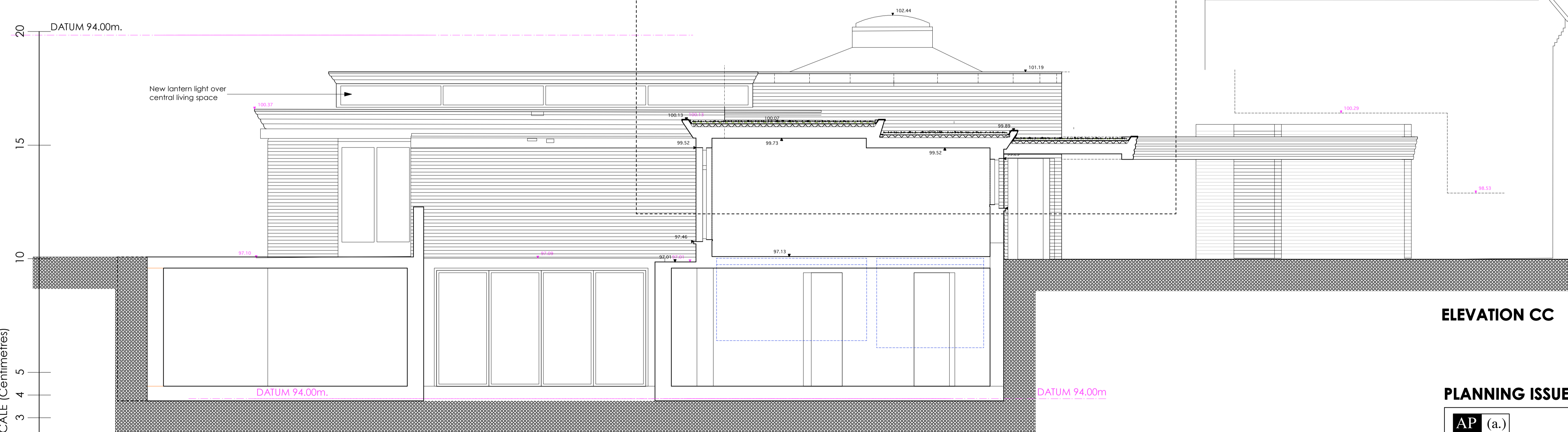




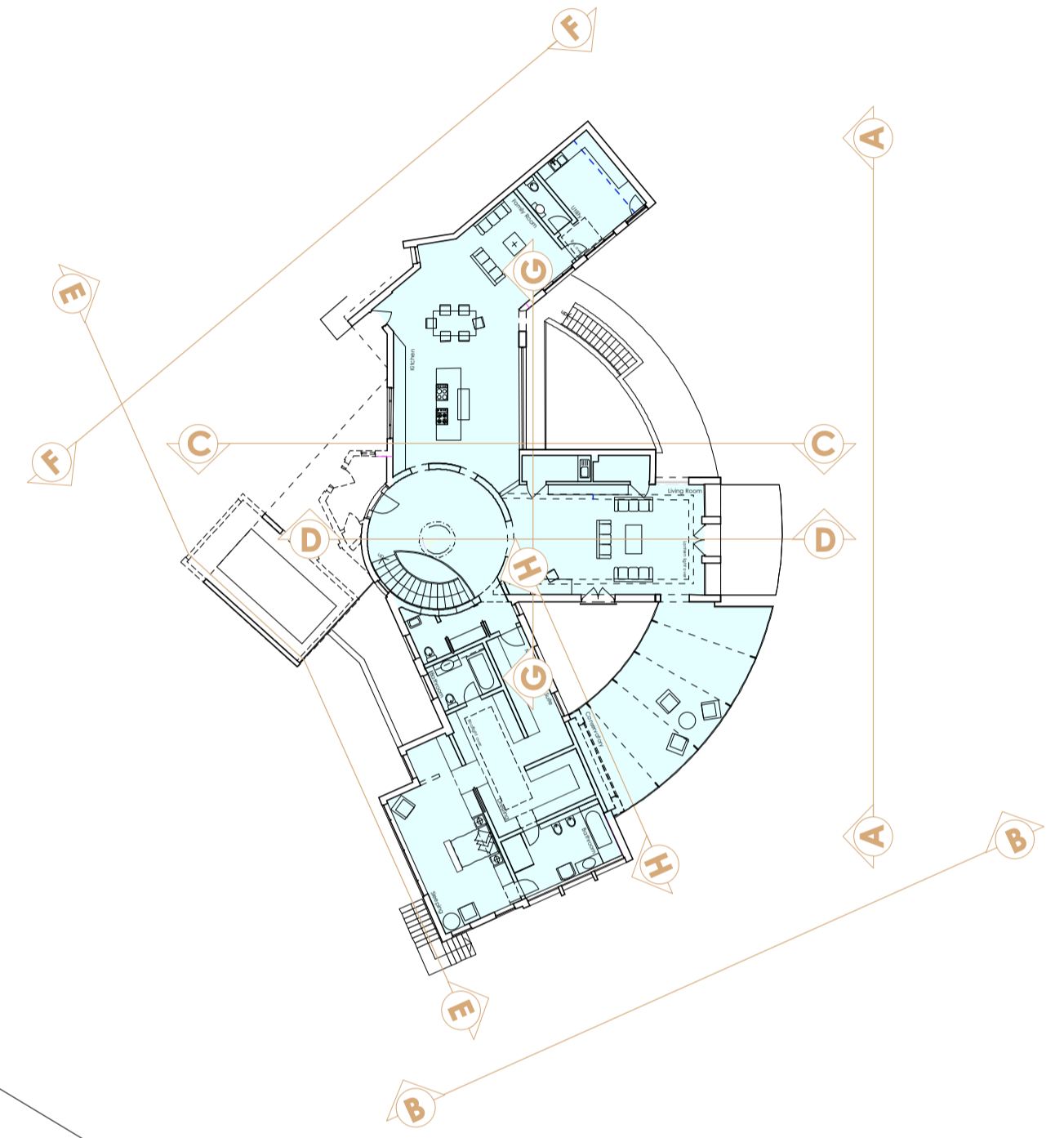
ELEVATION AA



ELEVATION BB



ELEVATION CC



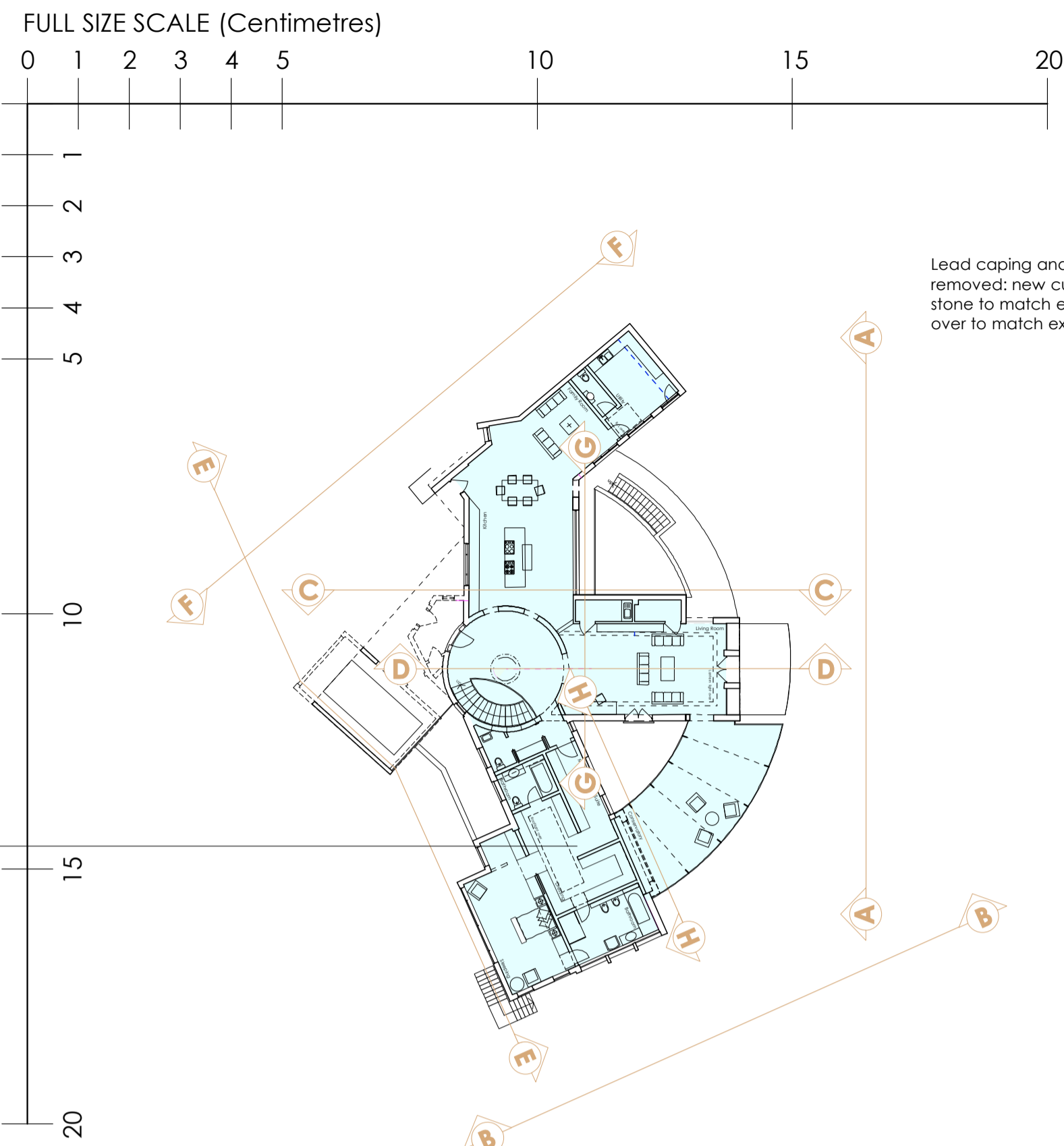
REV B: 23 September 2009
 1 Rotunda and lantern light heights reduced
 REV A: July 2009
 1 Scale annotation amended
 2 Green roofs added
 3 Reference to Roof Plan added

PLANNING ISSUE

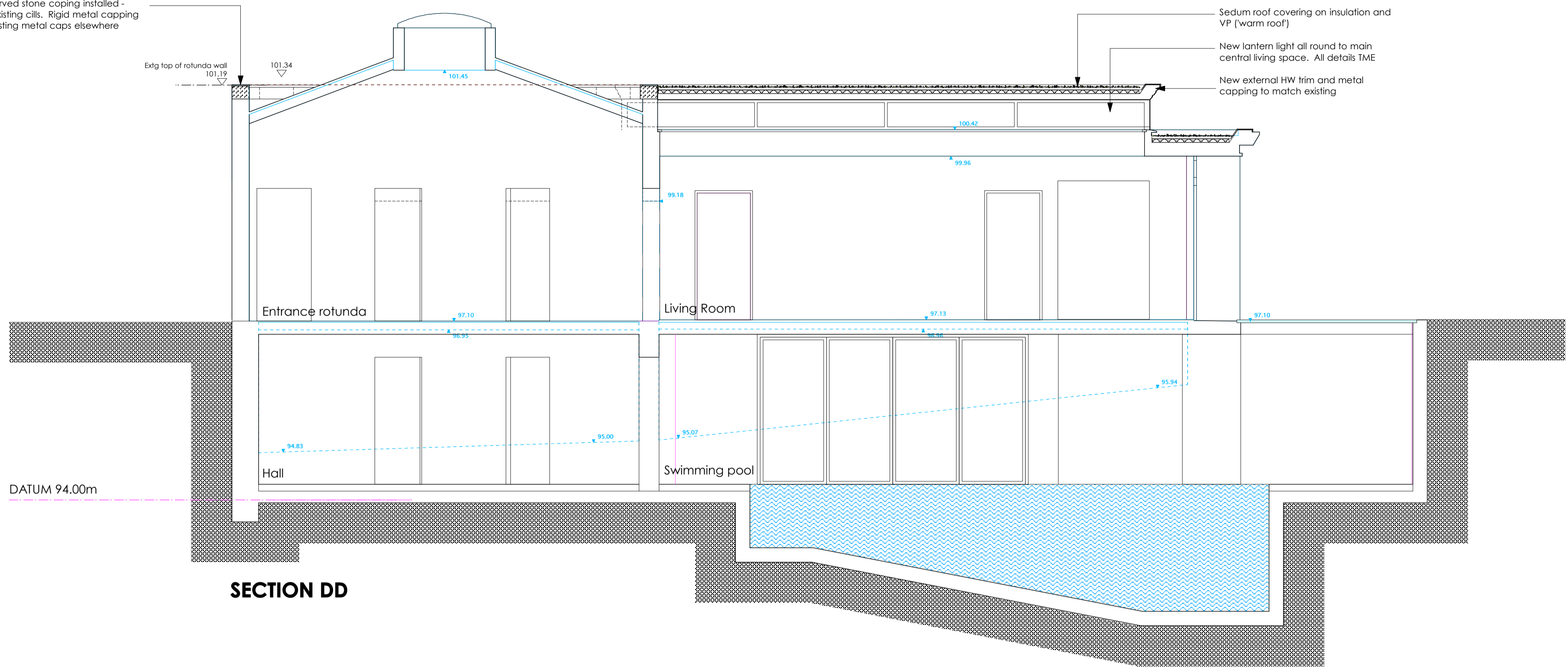
A1 1:50 @ A1
 1:100 @ A3

	DRAWING	DRWG. N°
	PROPOSED ELEVATIONS/SECTIONS	468/102
	PROJECT	Rev. B
	22 FROGNAL WAY LONDON NW3	Scale 1:50 @ A1 1:100 @ A3
CLIENT	Date	January 2009
PERVAIZ NAVIEDE	Drawn	

DO NOT SCALE FROM THIS DRAWING. ALL DIMENSIONS TO BE CHECKED ON SITE AND DISCREPANCIES REPORTED TO ARCHITECT



Lead coping and brick on edge to top of rotunda removed: new curved stone coping installed - stone to match existing cills. Rigid metal capping over to match existing metal caps elsewhere



REV B: 23 September 2009
 Rotunda and lantern light heights reduced
 REV A: July 2009
 1. Scale annotation amended
 2. Green roofs added

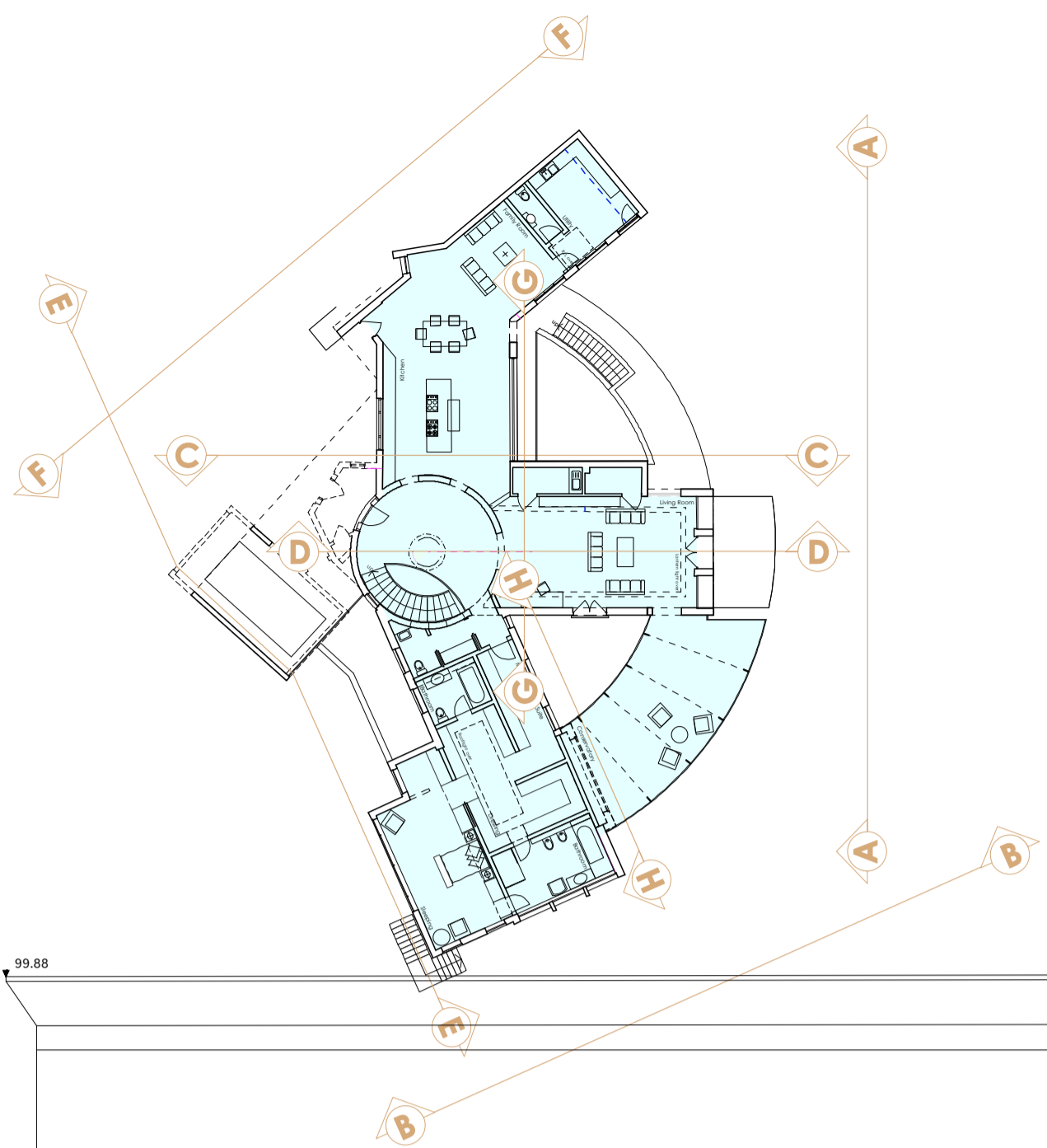
PLANNING ISSUE

A1 1:50 @ A1
 1:100 @ A3

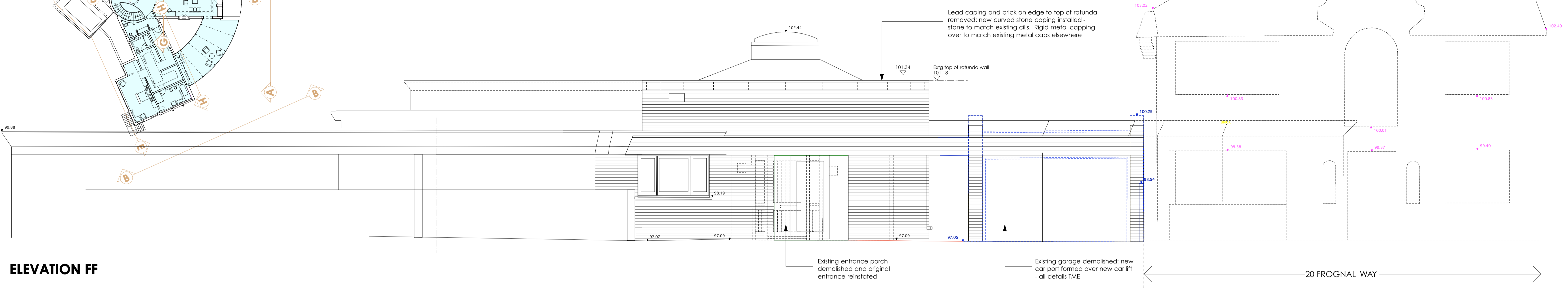
	DRAWING	PROPOSED ELEVATIONS/SECTIONS	DRWG. N°
	PROJECT	22 FROGNAL WAY LONDON NW3	468/103
CLIENT	PERVAIZ NAVIEDE	Rev.	B
		Scale	1:50 @ A1 1:100 @ A3
		Date	January 2009
		Drawn	

DO NOT SCALE FROM THIS DRAWING. ALL DIMENSIONS TO BE CHECKED ON SITE AND DISCREPANCIES REPORTED TO ARCHITECT



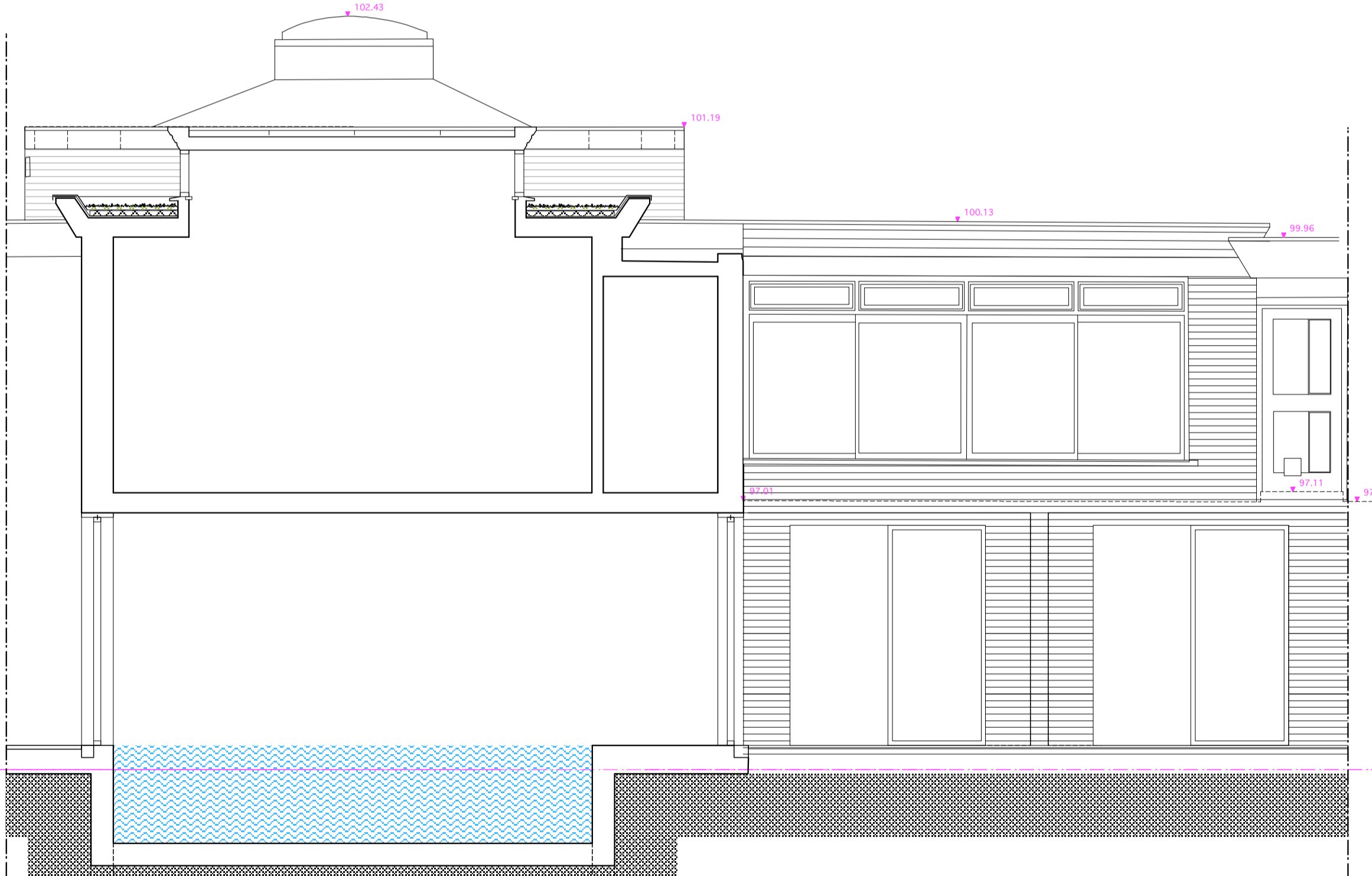
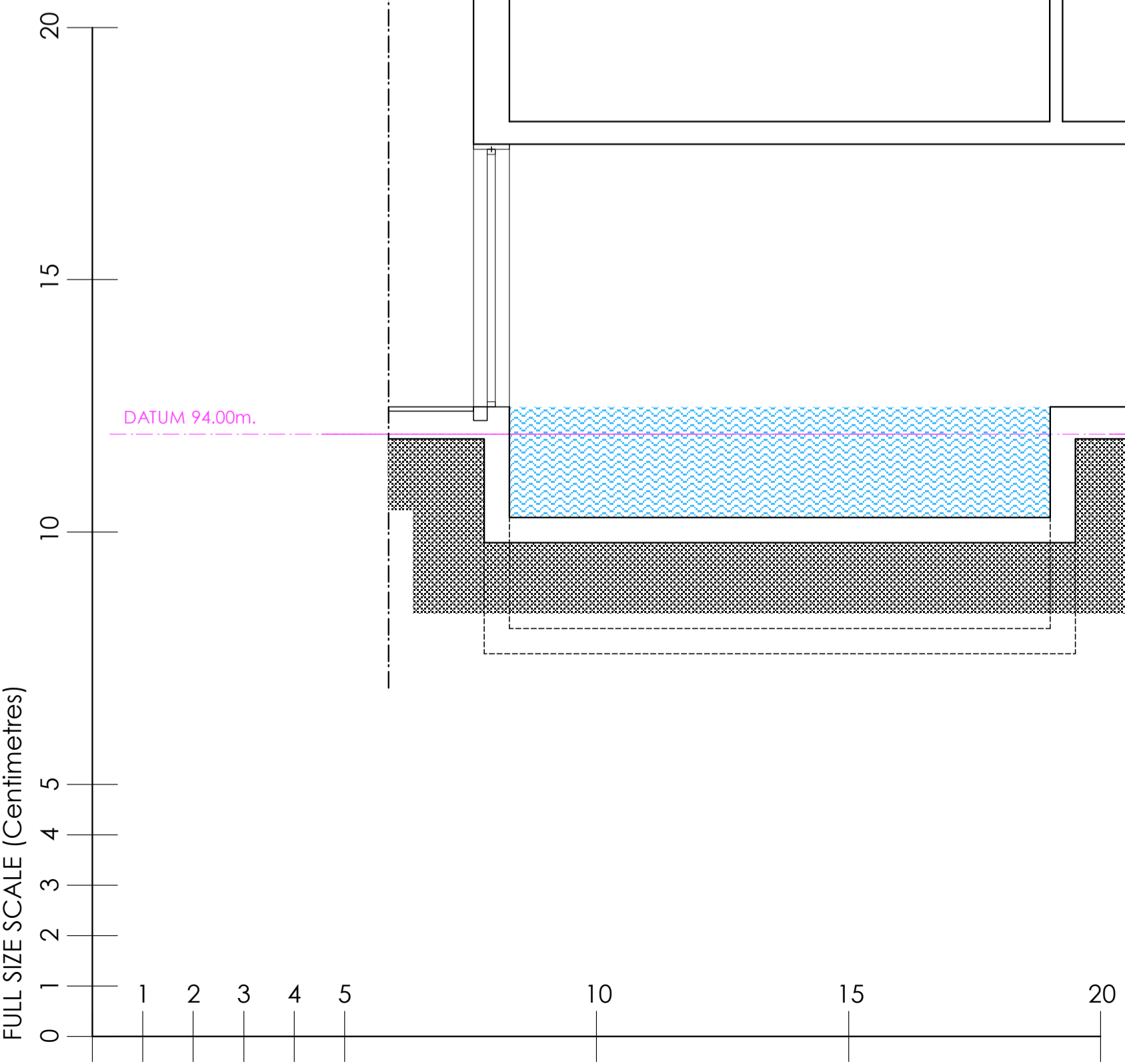


ELEVATION FF

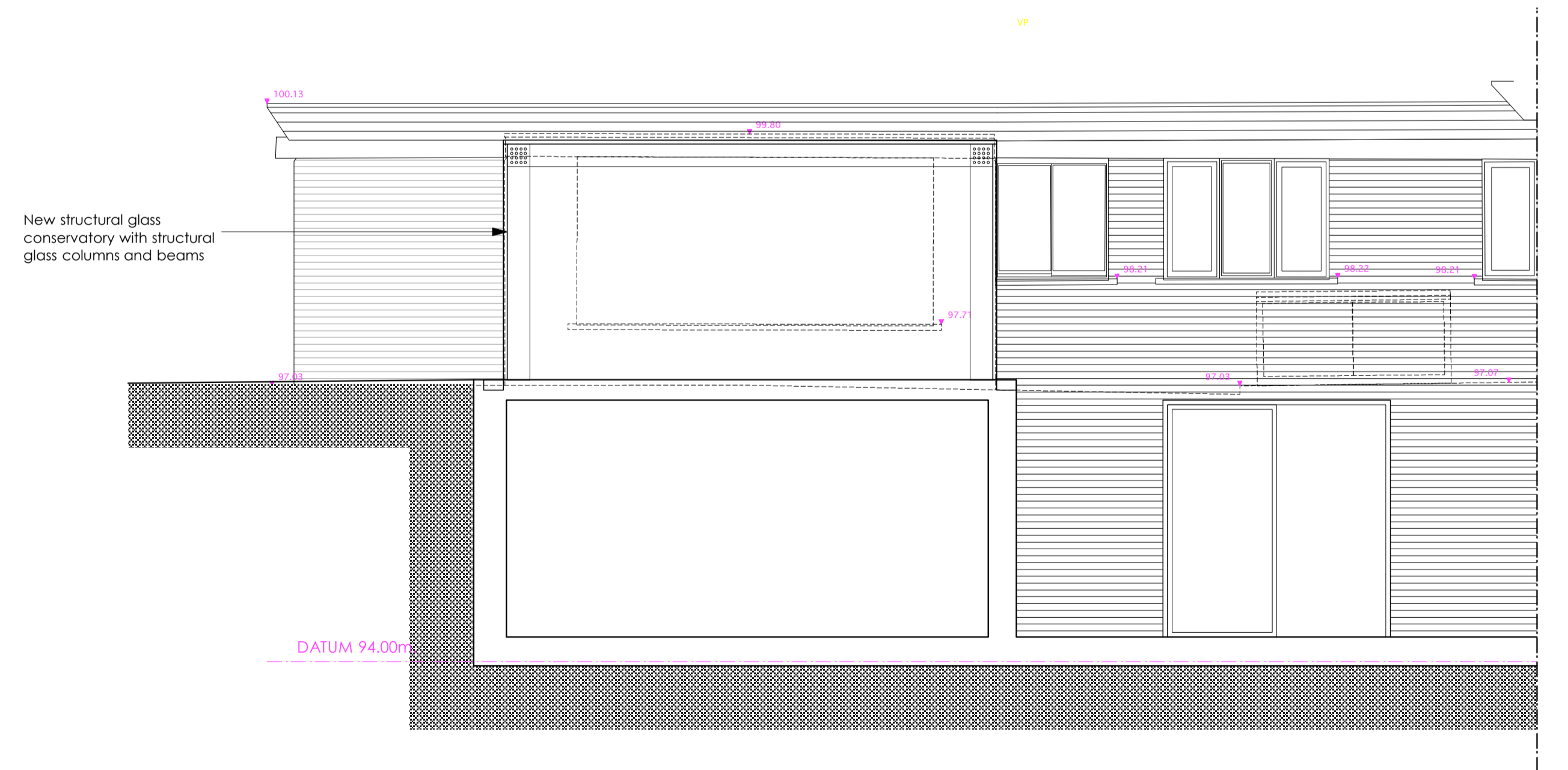


DATUM 94.00m.

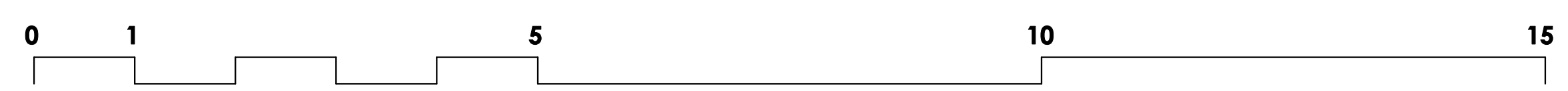
DATUM 94.00m.



ELEVATION GG



ELEVATION HH



REV B: 23 September 2009
 Rotunda and lantern light heights reduced
 REV A: July 2009 Scale annotation amended

PLANNING ISSUE

AP (a.)
 alan power | (ARCHITECTS.)

Alan Power Architects Ltd
 13 Needham Road London W11 2RP
 Tel: 020 7229 9375 Fax: 020 7221 4172

DRAWING PROPOSED ELEVATIONS/SECTIONS	DRWG. N° 468/104
PROJECT 22 FROGNAL WAY LONDON NW3	Rev. B
CLIENT PERVAIZ NAVIEDE	Scale 1:50 @ A1 1:100 @ A3
	Date January 2009
	Drawn

DO NOT SCALE FROM THIS DRAWING. ALL DIMENSIONS TO BE CHECKED ON SITE AND DISCREPANCIES REPORTED TO ARCHITECT

A1 1:50 @ A1
 1:100 @ A3