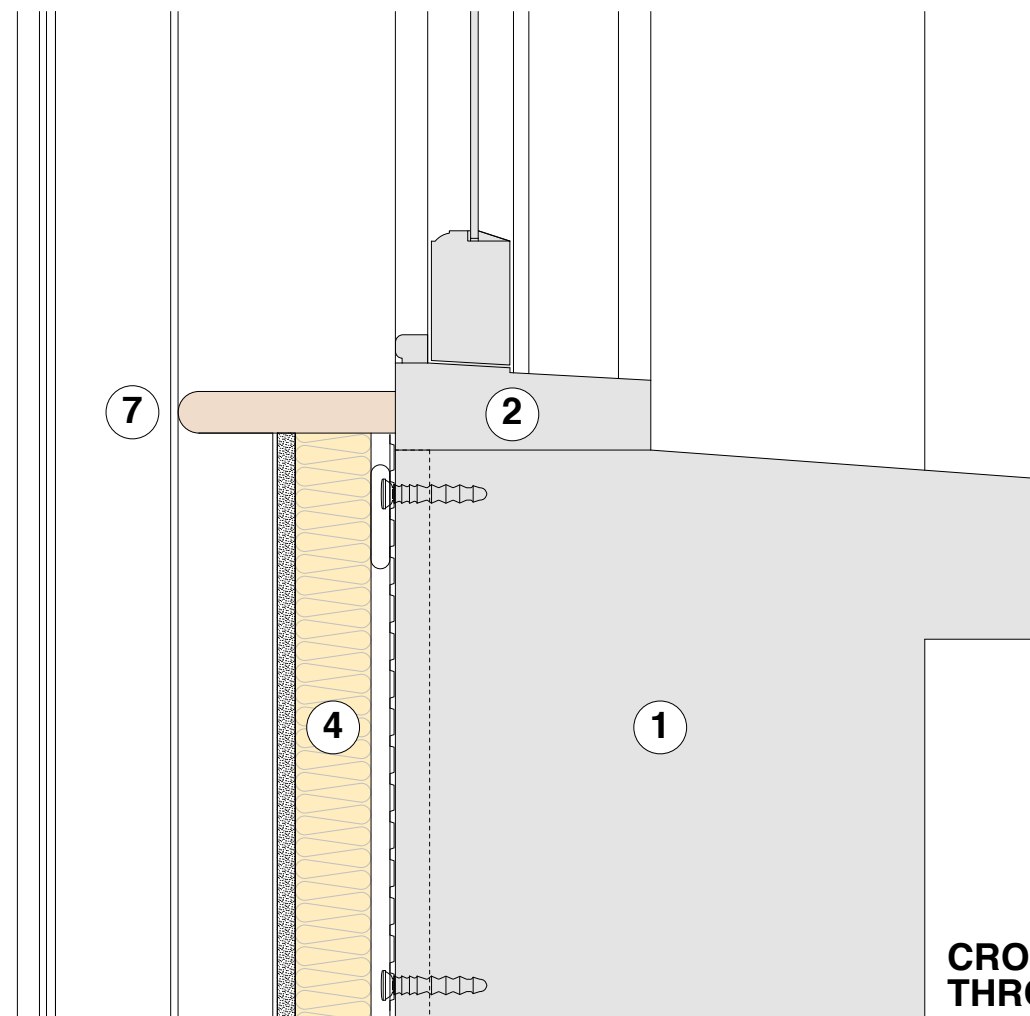
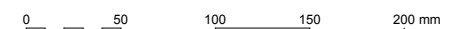


KEY:

- 1** = existing solid wall construction (including retained 1980s impermeable sand/cement render)
- 2** = existing sash window (any existing architraves are non-original) with splayed timber reveals where indicated
- 3** = existing/new external timber door & frame (and non-original architraves where indicated)
- 4** = 40 mm Gyproc Thermaline Plus with Thistle finish coat on dabs (+ mechanical fixings) on 3 mm thick Newton 503 vapour control/isolating membrane fixed to wall with Multiplug nailable plugs - 65 mm total thickness
- 5** = 12.5 mm plasterboard with Thistle finish coat on dabs on 3 mm thick Newton 503 vapour control/isolating membrane fixed to wall with Multiplug nailable plugs - 28 mm total thickness
- 6** = Selectaglaze secondary glazing (overall 68 mm standoff from inner face of sash window box frame)
- 7** = painted timber cill board
- 8** = painted softwood joinery (frame packing etc for secondary glazing) including ogee architraves where indicated
- 9** = painted ogee architrave on shaped timber splayed reveal lining extension



CROSS-SECTION THROUGH CILL



client ONE HOUSING GROUP	
job title FREDERICK STREET PORTFOLIO LONDON	
drawing 17 FREDERICK STREET BASEMENT DRY LINING DETAILS	
scale 1:2 @ A1 or 1:4 @ A3	date JUNE 2016
drawn PS	checked SA
<small>PROJECT 5 ARCHITECTURE LLP 8 Waterloo Street London E2 8JL T: +44 (0)20 7739 9131 F: +44 (0)20 7739 3667 E: info@p5.co.uk</small>	
drawing no. 6214-FAC-D220	