

# Camden Core Strategy 2010-2025

## Local Development Framework



**If you would like this document in large print  
or Braille, or in another language, please  
contact 020 7974 5615**

Find out more about this document and the LDF by visiting [camden.gov.uk/ldf](http://camden.gov.uk/ldf)  
or by calling the LDF hotline 020 7974 5615/2043.

Forward Planning  
London Borough of Camden  
Town Hall Extension  
Argyle Street  
London WC1H 8EQ

Published November 2010.

Camden's Local Development Framework. Core Strategy 2010.



## Section 1

# Location and management of Camden's growth

- 1.1 Camden is growing and changing. It is estimated that our population will increase by around 36,000 people (about 18% of total population) between 2006 and 2026, while London will grow by over a million people over the same period (15%). Future growth in Camden will be largely due to there being more births than deaths in the borough, although in-migration will also be a factor. In addition, our population is growing older with increases in the proportion of working age people over 45 and those of pensionable age between 60/65 and 74. (GLA Round 2006 Demographic Projections).
- 1.2 The forecast growth in population will be accompanied by an increase in the number of homes, offices and other land uses. The Mayor of London's London Plan contains a target of 5,950 additional homes in Camden from 2007/8 to 2016/17, which we are expected to exceed (see paragraph 1.7). National planning policy also promotes increasing the supply of homes. The Core Strategy must be consistent with national policies and in general conformity with the London Plan.
- 1.3 *A sustainable Camden that adapts to a growing population* is one of the four themes within the vision of *Camden Together*, Camden's Community Strategy. The Community Strategy says that we will find ways to adapt to Camden's growing population while protecting, promoting and enhancing our environment for us and for future generations. The Core Strategy is one of the main mechanisms for achieving this aim.
- 1.4 This section sets out the Council's overall spatial strategy for the borough. It explains where Camden's future growth and development will be focussed, gives more detail on our approach to growth areas, other highly accessible areas and areas which will experience more limited change. It also sets out our overarching approach, further developed in sections 2 and 3, to managing growth in a way that provides necessary homes, jobs and facilities and protects and improves Camden's environment, heritage and quality of life.







# CS1. Distribution of growth

- 1.5 Many parts of the country are facing the challenge of where and how to accommodate a growing and changing population and the facilities and infrastructure needed to support it. Camden's character – as an already highly built up, inner London area, with limited land available for development, many established residential areas, often mixed with other uses, and many places of heritage, environmental and community value – mean that we face particular challenges in adapting to our growing population while improving and protecting our environment and quality of life. Policy CS1 sets out our overarching approach to the location of future growth and development in the borough.

## CS POLICY

### CS1 – Distribution of growth

#### Overall approach to growth and development:

The Council will focus Camden's growth in the most suitable locations, and manage it to make sure that we deliver its opportunities and benefits and achieve sustainable development, while continuing to preserve and enhance the features that make Camden such an attractive place to live, work and visit.

We will promote:

- a) a concentration of development in the growth areas of King's Cross, Euston, Tottenham Court Road, Holborn and West Hampstead Interchange;
- b) appropriate development at other highly accessible locations, in particular Central London and the town centres of Camden Town, Finchley Road / Swiss Cottage, Kentish Town, Kilburn High Road and West Hampstead; and
- c) more limited change elsewhere.

Following this approach, the Council expects that in the order of 12,250 additional homes will be provided in Camden between 2010/11 and 2024/25. We will identify, and provide guidance on, the main development opportunity sites in the borough through our Camden Site Allocations Local Development Framework document.

#### Making the best use of Camden's limited land

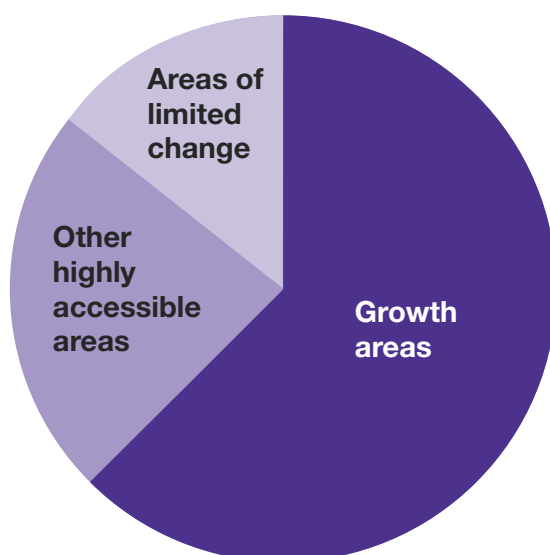
The Council will promote the most efficient use of land and buildings in Camden by:

- d) seeking development that makes full use of its site, taking into account quality of design, its surroundings, sustainability, amenity, heritage, transport accessibility and any other considerations relevant to the site;
- e) resisting development that makes inefficient use of Camden's limited land;
- f) expecting development that will significantly increase the demand of travel to be located in growth areas and other highly accessible parts of the borough;
- g) expecting high density development in Central London, town centres and other locations well served by public transport; and
- h) expecting the provision of a mix of uses in suitable schemes, in particular in the most accessible parts of the borough, including an element of housing where possible.

## Overall approach to growth and development

- 1.6 The Council's overall strategy for managing future growth in Camden is to promote the provision of homes, jobs and other facilities in areas with significant redevelopment opportunities at, or near, transport hubs, and support appropriate development at other accessible locations, with more limited change elsewhere. This approach will:
- focus growth on places that can support higher density development, reducing pressure for substantial development in predominantly residential areas (although some development will take place throughout the borough);
  - allow us to better 'shape' places by promoting high quality design of buildings and places, securing necessary infrastructure, providing an appropriate mix of uses, including community facilities, and securing regeneration benefits; and
  - through promoting larger schemes increase our ability to provide more sustainable places, for example by maximising opportunities for local power and heating.
- 1.7 We expect our strategy to provide approximately 12,250 additional homes (including 9,850 new self-contained homes) between 2010/11 and 2024/25. This provision is expected to include around 7,250 homes from sites of 10 homes or more. The diagram below shows how these homes will be distributed around the borough. Just over 60% will be on sites in the growth areas, just over 20% will be in other highly accessible areas, and around 15% will be in areas of more limited change. In addition c2,600 homes will be provided from smaller sites and c2,400 from non-self contained dwellings and vacancies being returned into use. On the basis of past trends, we expect these homes to follow broadly the same distribution around the borough. This gives a total of around 815 homes per year between 2010/11-2024/25, which comfortably exceeds Camden's current London Plan target of 595 homes per year between 2007 and 2017. This means that we can meet our housing targets even if some identified sites do not come forward for development as envisaged.

### Distribution of new homes by area 2010-2025 (based on identified sites for 10 or more homes)



- 1.8 Housing will be considered the priority land use of this Core Strategy and the Council's other Local Development Framework documents. Please see *policy CS6 – Providing quality homes* for our detailed approach to housing, and paragraphs 6.8 to 6.18 for more detailed information on our housing targets and the type of housing that will be provided.

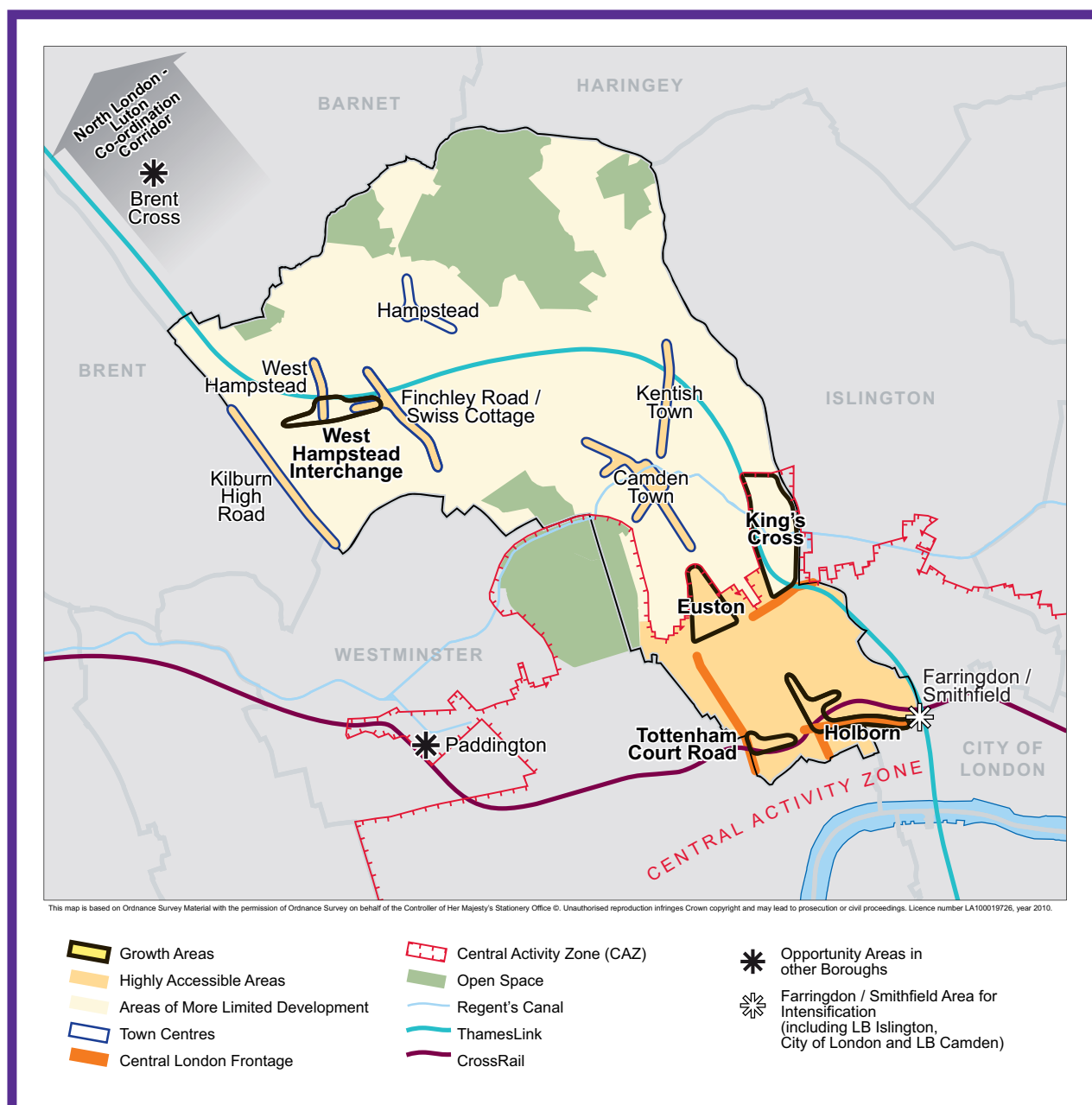


- 1.9 The Council's overall spatial strategy is illustrated on Map 1 – Key Diagram. This shows the broad location of Camden's growth areas, other highly accessible locations / town centres, major transport schemes and the borough's main open spaces.
- 1.10 A key part of our strategy is to ensure that our growing population is supported by necessary infrastructure and services. The Camden Infrastructure Study 2009, commissioned by the Council, identified the borough's infrastructure needs over the fifteen year period covered by this Core Strategy, taking into account expected growth. This forms the basis of Appendix 1 which sets out key infrastructure programmes and projects needed to deliver the Core Strategy. Section 4 sets out more detail on our approach to the provision of infrastructure. Developments will be expected to make appropriate contributions towards the infrastructure needs they generate.

### Growth areas

- 1.11 King's Cross, Euston, Tottenham Court Road, Holborn and West Hampstead Interchange will be the locations for the largest amount of Camden's future growth. These areas are identified in the London Plan as suitable for large scale redevelopment or significant increases in jobs and homes, and are based around transport interchanges where increased capacity is planned. The majority of these areas are within Central London and therefore their redevelopment will contribute towards the continued success of Central London and to London's national and international role, as well as providing opportunities to bring benefits to the borough and the local area. Please see policy CS9 – *Achieving a successful Central London* for our overall approach to Central London.
- 1.12 King's Cross will be the focus of the most growth in Camden up to 2025, with large-scale redevelopment transforming the area and creating a new quarter for Camden and London. Redevelopment at Euston and around Tottenham Court Road will also provide substantial numbers of jobs and homes, as well as other uses and facilities. Development at West Hampstead Interchange is expected to be predominantly housing. Policy CS2 – *Growth areas* gives more detail on our approach to Camden's main growth areas. The boundaries of the growth areas are shown on Maps 11-15 in Appendix 6.
- 1.13 King's Cross, Euston and Tottenham Court Road (part in Westminster) are included in the London Plan as Opportunity Areas, that is, places able to accommodate substantial new jobs and homes, in association with public transport improvements. Holborn, West Hampstead Interchange and Farringdon/Smithfield (much of which lies in the City of London and Islington) are designated as Areas for Intensification, places with significant potential for redevelopment for housing, employment and other uses, although at a scale less than that for Opportunity Areas, again in association with public transport improvements.
- 1.14 Known development sites in the growth areas and at other locations throughout the borough, and the Council's expectations for them, are identified in the *Camden Site Allocations* document, which also forms part of our Local Development Framework.

Map 1: Key Diagram



### Other highly accessible locations

- 1.15 Beyond the growth areas there are a number of other parts of the borough which are considered suitable locations for significant development as they are highly accessible by a range of means of transport. These highly accessible areas are the Central London area outside of the growth areas, and the town centres of Camden Town, Finchley Road/Swiss Cottage, Kilburn High Road, Kentish Town and West Hampstead. These areas are considered to be particularly suitable locations for uses that are likely to lead to a significant increase in travel demand (for example, retail, offices, leisure and tourism), although the scale of development at these locations is expected to be less than that in the growth areas. Public transport accessibility to Hampstead is not considered to be sufficient for it to be a suitable location for uses that generate significant travel demand.
- 1.16 Policy CS3 gives more detail on our approach to Camden's other highly accessible locations. Policy CS9 sets out our overarching approach to Central London, with its unique character and challenges, where we seek to achieve a balance between its important contribution to London and the UK and local communities and facilities. Policy CS7 sets out our approach to Camden's town centres.



- 1.17 We will expect activities that are that are likely to lead to a significant increase in travel demand to be located in these parts of the borough or the growth areas. The Council will require applicants to demonstrate that all potential options for development in these areas have been thoroughly assessed before edge-of-centre and, finally, sites outside these areas are considered for development, taking into account their accessibility by a choice of means of transport; their likely effect on travel patterns and car use. This approach will help to reduce the need for car journeys, help promote walking, cycling and public transport and allow a single journey to serve more than one purpose. For more information on the level of development we consider creates significant travel demand please see Appendix 1 in Camden Development Policies.

### **Areas of more limited change**

- 1.18 Other parts of the borough are generally expected to experience more limited development and change than will occur in the growth areas and other highly accessible locations. The scale of this will vary, from areas adjacent to growth areas, such as Somers Town, where the Council will seek to spread the redevelopment benefits of nearby schemes, to predominantly residential areas, where smaller scale and more incremental change is expected take place. Policy CS4 gives more detail on these areas and the Council's approach to them.

### **Managing growth**

- 1.19 Central to the Council's overall approach to adapting to Camden's growing population is managing future growth to make sure that it is sustainable, that it provides opportunity and benefits to the borough and its local area, and that it protects and enhances our environment, heritage and quality of life.
- 1.20 Our overall approach to managing the impact of growth is set out in policy CS5, while more detail on aspects of our approach to managing growth is given in many other policies in this Core Strategy, particularly those in section 3 – *A sustainable and attractive Camden*, for example policy CS13 on tackling climate change and CS14 on promoting high quality places and conserving our heritage. Camden Development Policies contains detailed planning policies to support our strategy of managing growth, for example on high quality design (DP24), sustainable design and construction (DP22), and the impact of development on occupiers and neighbours (DP26).

### **Making the best use of Camden's limited land**

- 1.21 If we are going to adapt successfully to Camden's growing population, we need to make the best use of the borough's limited land. The Council will promote the most efficient use of Camden's land and buildings while also seeking to improve the quality of our environment, protect the amenity of occupiers and neighbours and meet its other planning objectives.

### **Density**

- 1.22 One way of making the most efficient use of our land and buildings is to encourage higher densities (that is, have more buildings or rooms in a given area). The Council wants to encourage developments with high densities in the most accessible parts of the borough (generally, Central London and the town centres of Camden Town, Finchley Road/Swiss Cottage, Kilburn High Road, Kentish Town and West Hampstead) and other appropriate locations. Such schemes should be of excellent design quality and sensitively consider the amenity of occupiers and neighbours and the character and built form of their surroundings, particularly in conservation areas. Good design can increase density while protecting and enhancing the character of an area. (Please see policy CS14 and Development Policies DP24 and D25 for more detail on our approach to design.)
- 1.23 The Council will expect the density of housing development to take account of the density matrix in the London Plan (Table 3A.2). As Camden is generally well served by public transport, the Council will expect densities towards the higher end of the appropriate density range in the matrix unless it can be demonstrated that the specific circumstances of a development mean this is not appropriate. Densities below the relevant range in the density matrix will not be permitted. In addition, development schemes with a density below that of the surrounding area will normally be resisted. Please also see paragraphs 2.9 to 2.10 in Camden Development Policies for more on our approach to density.

## Mixed use developments

- 1.24 The provision of an appropriate mix of uses, both within areas and in individual buildings, can also contribute to successfully managing future growth in Camden and making efficient use of its limited land. A mix of uses can also:
- reduce commuting and the need for some other journeys, helping to cut congestion in the borough and improve air quality;
  - increase the provision of much-needed housing;
  - promote successful places that have a range of activities and are used throughout the day, increasing safety and security.
- 1.25 The Council will encourage the provision of a mix of uses in suitable locations and expect development proposals of an appropriate size in Central London and the town centres of Camden Town, Swiss Cottage and Kilburn High Road to contribute towards the supply of housing. This reflects the designation of housing as the priority land use of the Core Strategy (see policy CS6). Camden Development Policies policy DP1 contains further detail on the Council's approach to mixed use development. The Council's Site Allocations document will identify future development sites and provide guidance for their future development, including where mixed use development is appropriate.

### Key evidence and references

- Camden Housing Needs Study Update 2008
- Camden Annual Monitoring Report 2007/08
- The London Plan (consolidated with Alterations since 2004); Mayor of London; 2008
- Planning Policy Statement (PPS) 1: Delivering Sustainable Development; ODPM; 2005
- Planning Policy Statement 3: Housing; ODPM; 2006
- Camden Together – Camden's Sustainable Community Strategy; 2007-2012
- GLA Round 2006 Demographic Projections





## CS5. Managing the impact of growth and development

- 5.1 The overall approach of the Core Strategy, as set out in policy CS1, is to manage Camden's growth to make sure that its opportunities and benefits are delivered and sustainable development is achieved, while continuing to conserve and enhance the features that make Camden such an attractive place to live, work and visit. This flows from the Camden Community Strategy theme of a sustainable Camden that adapts to a growing population. Policy CS5 provides more information on our approach to managing the impact of growth in the borough.

### CS POLICY

#### CS5 – Managing the impact of growth and development

The Council will manage the impact of growth and development in Camden. We will ensure that development meets the full range of objectives of the Core Strategy and other Local Development Framework documents, with particular consideration given to:

- a) providing uses that meet the needs of Camden's population and contribute to the borough's London-wide role;
- b) providing the infrastructure and facilities needed to support Camden's population and those who work in and visit the borough;
- c) providing sustainable buildings and spaces of the highest quality; and
- d) protecting and enhancing our environment and heritage and the amenity and quality of life of local communities.

The Council will protect the amenity of Camden's residents and those working in and visiting the borough by:

- e) making sure that the impact of developments on their occupiers and neighbours is fully considered;
- f) seeking to ensure development contributes towards strong and successful communities by balancing the needs of development with the needs and characteristics of local areas and communities; and
- f) requiring mitigation measures where necessary.

#### Making sure development achieves the objectives of the Core Strategy

- 5.2 Central to managing Camden's future growth is the need to consider not just the scale and nature of that growth, but how it is provided and the effect on those who live in the area and the borough as a whole. All development in Camden, large or small, whether located in growth areas, highly accessible locations or in other parts of the borough, should take place in accordance with all relevant policies in the Core Strategy and the other documents that form part of Camden's Local Development Framework (see paragraph 4 in the Introduction) to ensure that the Council's vision for the borough is achieved. The Council will seek to ensure that the borough's growth brings benefits and opportunities to all.
- 5.3 The second section of this Core Strategy, *Meeting Camden's needs – Providing homes, jobs and facilities*, sets out our approach to providing the land uses, infrastructure and facilities that are needed to support Camden's communities, workers and visitors. This includes places to live, work and shop, community facilities and provision for walking, cycling and public transport. The section also sets out our approach to the unique issues faced in Central London, the home to many of the uses that contribute to London's role as a capital and major international city, as well as long-established residential communities.

- 5.4 One of the key elements of managing Camden's growth is securing the infrastructure and services needed to support Camden's growing numbers of residents, workers and visitors. To identify the infrastructure need in the borough in future years we commissioned the Camden Infrastructure Study 2009. This work formed the basis of the schedule in Appendix 1, which set out identified key infrastructure programmes and projects including transport, utilities, emergency services, education, health and other community facilities. It gives information on the nature of each infrastructure scheme, where it will be located, who will lead on its delivery and when it is expected to be provided. As the boundaries of the growth area are relatively tightly drawn, taking in the main development opportunities, the infrastructure to support a particular growth area may be provided outside its boundary. Please see section 19 – *Delivering and monitoring the Core Strategy* for more detail on our approach to infrastructure provision. In addition, the individual sections in the Core Strategy also contain details of infrastructure requirements and provision that are relevant to that section (for example, policy CS15 on open space and policy CS11 on transport.)
- 5.5 The third section of the Core Strategy, *A sustainable and attractive Camden – Tackling climate change and improving and protecting Camden's environment and quality of life*, focuses on making sure that growth is sustainable and properly takes into account the character of Camden and the aspects of the borough that make it such an attractive place to live, work and visit. It sets out how we intend to make Camden a low carbon, low waste borough; deal with climate change; and protect, and where possible enhance, our built environment, heritage and open spaces. It also sets out our approach to improving the safety and health of the community.
- 5.6 Our Camden Development Policies Local Development Framework document will be one of the main mechanisms by which we will seek to deliver to vision and objectives in the Core Strategy. It sets out planning policies that provide more detail of our approach to many of the matters covered in this Core Strategy. We will use Camden Development Policies alongside the Core Strategy when we determine applications for planning permission.

### **Protecting amenity**

- 5.7 Camden's high level of amenity – the features of a place that contribute to its attractiveness and comfort – is a major factor in the quality of life of the borough's residents, workers and visitors and fundamental to Camden's attractiveness and success. However, Camden's inner London location, the close proximity of various uses and the presence of major roads and railways can mean that privacy, noise and light can be particular issues in the borough.
- 5.8 Protecting amenity is, therefore, a key part of successfully managing growth in Camden. We will expect development to avoid harmful effects on the amenity of existing and future occupiers and nearby properties or, where this is not possible, to take appropriate measures to minimise potential negative impacts. More detail and guidance on our approach to amenity is contained in Camden Development Policies policy DP26 – and our Camden Planning Guidance supplementary document. Other policies in Camden Development Policies also contribute to protecting amenity in the borough by setting out our detailed approach to specific issues, such as the impact of food, drink and entertainment uses (policy DP12), noise and vibration (policy DP28) and air quality (policy DP32)

### **Promoting successful communities**

- 5.9 A key element to our overall strategy of managing Camden's future growth is to ensure that the opportunities and benefits of this growth are delivered in a way that meets the needs of Camden's residents and promotes strong and successful communities. In assessing development proposals, the Council will take into account the needs and benefits of the development alongside the individual characteristics and needs of the local area and community, and will seek to strike a balance between them. Where relevant, we will take into account the cumulative impacts of developments, or particular types of development, on local areas and communities.

#### **Key evidence and references**

- Camden Together – Camden's Sustainable Community Strategy; 2007-2012
- The London Plan (consolidated with alterations since 2004); Mayor of London; 2008





## CS14. Promoting high quality places and conserving our heritage

- 14.1 Camden does not have a single built character but is made up of many diverse areas, each with their own identity. The southern part of the borough, which forms part of Central London, is characterised by a high density built environment and complex mix of uses. The central part of the borough contains several town centres surrounded by areas of medium-density housing and some employment uses. The north of the borough is predominantly residential of a lower density with substantial open space at Hampstead Heath. Throughout the borough there are examples of Camden's unique architectural heritage, with many high quality buildings and places, old and new. This is reflected in our large number of conservation areas and listed buildings, which have been recognised for their special architectural or historic interest.
- 14.2 Our overall strategy is to sustainably manage growth in Camden so it meets our needs for homes, jobs and services in a way that conserves and enhances the features that make the borough such an attractive place to live, work and visit. Policy CS14 plays a key part in achieving this by setting out our approach to conserving and, where possible, enhancing our heritage and valued places, and to ensuring that development is of the highest standard and reflects, and where possible improves, its local area. Policy CS13 above and policy DP22 in Camden Development Policies set out our approach to ensuring that design in the borough is sustainable and that schemes include measures to minimise the effects of, and adapt to, climate change.

### CS POLICY

#### CS14 – Promoting high quality places and conserving our heritage

The Council will ensure that Camden's places and buildings are attractive, safe and easy to use by:

- a) requiring development of the highest standard of design that respects local context and character;
- b) preserving and enhancing Camden's rich and diverse heritage assets and their settings, including conservation areas, listed buildings, archaeological remains, scheduled ancient monuments and historic parks and gardens;
- c) promoting high quality landscaping and works to streets and public spaces;
- d) seeking the highest standards of access in all buildings and places and requiring schemes to be designed to be inclusive and accessible;
- e) protecting important views of St Paul's Cathedral and the Palace of Westminster from sites inside and outside the borough and protecting important local views.

#### Excellence in design

- 14.3 Camden has many special and unique places and historic and modern buildings of the highest quality. As well as preserving this rich heritage, we should also be contributing to it by making sure that we create buildings of equally high quality that will be appreciated by future generations. The design of the places and buildings that make up our local environment affects us all and our quality of life. High quality design is visually interesting and attractive but it is not just about what things look like. Good design makes places that put people first, are welcoming, feel safe and are enjoyable and easy to use for everyone, whether they are living in, working in or just passing through the borough.





- 14.4 Development schemes should improve the quality of buildings, landscaping and the street environment and, through this, improve the experience of the borough for residents and visitors. The Council will therefore insist on high quality design throughout the borough. In accordance with government guidance in Planning Policy Statement (PPS) 1 – *Delivering Sustainable Development* we will not accept design that is considered inappropriate to its context or which fails to take opportunities to improve the character and quality of an area and the way it functions. Please see Camden Development Policies (policy DP24) for more detailed guidance on our approach to the design of new development and alterations and extensions. When assessing design, we will also take into account government/CABE guidance *By Design – Urban Design in the planning system: towards better practice* and our own Camden Planning Guidance supplementary document.
- 14.5 The Council is working with its partners to promote and celebrate excellence in design and improve public buildings, landscaping and the street environment; for example through the Camden Design Initiative, which seeks to improve public space and the built environment and encourage involvement, awareness and understanding of good design, including the bi-annual Camden Design Awards, which recognise high quality and innovative designs.
- 14.6 Good design is safe and accessible, and responds flexibly to the needs of its users. It creates buildings that have minimal negative impact on the environment, during construction and beyond. The construction and use of buildings currently accounts for around half of national carbon emissions and it is therefore vital that new and redeveloped buildings are designed to have a beneficial impact on their environment. See CS13 – *Tackling climate change through promoting higher environmental standards* and CS17 – *Making Camden a safer place* for our approach to these matters.
- 14.7 High quality design also takes account of its surroundings and what is distinctive and valued about the local area. Camden is made up of a diversity of areas, each with their own distinctive character, created by many elements such as architectural style and layout, social and economic history, landscaping and mix of uses – as summarised in the description of Camden’s character below. As Camden is a densely built-up borough where most development involves the replacement, extension or conversion of existing buildings, taking account of context and local character is particularly important. The Council will therefore expect the design of buildings and places to respond to the local area and its defining characteristics and reinforce or, if appropriate, create local distinctiveness.
- 14.8 While tall buildings offer the opportunity for intensive use, their siting and design should be carefully considered in order to not detract from the nature of surrounding places and the quality of life for those living and working around them. Applications for tall buildings will be assessed against policy CS14 and policies DP24 – *Securing high quality design* and DP25 – *Conserving Camden’s heritage* in Camden Development Policies, along with the full range of policies on mixed use, sustainability, amenity and microclimate. and other relevant policies. Effect on views, impact on local microclimate and provision of communal and private amenity space will also be important considerations.

## Camden's heritage

- 14.9 Camden has a rich architectural heritage with many special places and buildings from throughout Camden's history (see map 6). 39 areas, covering much of the borough, are designated as conservation areas, recognising their special architectural or historic interest and their character and appearance. We have prepared conservation area statements, appraisals and management strategies that provide further guidance on the character of these areas. We will take these documents into account as material considerations when we assess applications for planning permission and conservation area consent in these areas.
- 14.10 Over 5,600 buildings and structures in Camden are nationally listed for their special historical or architectural interest, and 53 of the borough's squares are protected by the London Squares Preservation Act 1931. In addition, 14 open spaces in Camden are on English Heritage's Register of Parks and Gardens of Special Historic Interest. The Council will consult with English Heritage over proposals affecting these parks and gardens. We also encourage the restoration and management of Parks and Gardens of Special Historic Interest and London Squares to enhance their value. Camden also has a generally well-preserved archaeological heritage, with 13 identified archaeological priority areas, although this can be vulnerable to modern development and land use.

## Map 6: Heritage



This map is based on Ordnance Survey Material with the permission of Ordnance Survey on behalf of the Controller of Her Majesty's Stationery Office ©. Unauthorised reproduction infringes Crown copyright and may lead to prosecution or civil proceedings. Licence number LA100019726, year 2010.



- 14.11 We have a responsibility to preserve and, where possible, enhance our heritage of important areas and buildings. Policy DP25 in Camden Development Policies provides more detailed guidance on the Council's approach to protecting and enriching the range of features that make up our built heritage.
- 14.12 Architectural detail, materials, colour and structures such as walls can make a significant contribution to the appearance of an area, but can often be altered without the need for planning permission. Cumulatively, many minor building works can gradually erode the quality of an area and undermine the quality of conservation areas. We will therefore make use of 'Article 4 Directions' in appropriate locations to bring some minor works under planning control. We are intending to introduce such measures in the conservation areas of Belsize, Hampstead, and Swiss Cottage, where loss of historic character through cumulative change is apparent. Primrose Hill conservation area already benefits from a comprehensive Article 4 Direction, which has helped to retain its high quality historic character.

### **Landscaping and public realm**

- 14.13 The quality of our streets and public spaces affects the quality of all our lives. We enjoy being in and passing through attractive, clean and well-maintained places, but are discouraged from walking in and through areas with a poor environment. An enhanced public realm should integrate transport and land use, contribute to improved walking and cycling environments, respect and reinforce local identity and character, attract people to the area and encourage the use of streets and public spaces to create diverse, vibrant and lively places.
- 14.14 The Council is committed to improving Camden's streets and public spaces and has carried out many improvement schemes with many more ongoing and planned. We have produced a Camden Streetscape Design Manual to raise the standard of street works throughout the borough. This sets standards for our own works and provides guidance for other agencies. It encourages respect for local character and promotes high quality, clutter-free design to make streets and public places that are safe and easy to use for all.
- 14.15 A number of studies on streets and spaces have been produced, particularly for the south of the borough (e.g. Bloomsbury, King's Cross and St Giles/Tottenham Court Road). These have been commissioned and funded by a range of organisations (including TfL, LDA, Design for London and UCL) sometimes in partnership with the Council. It is procedurally difficult for the Council to adopt these non-statutory documents as formal planning or other guidance. We will therefore look to draw on the best of this work to create a long-term vision for these areas, emphasising local character and providing a high quality environment for walking, which is formally agreed by the Council.
- 14.16 In order to improve the environment for walking in the borough, Camden is committed to the 'Legible London' concept which aims to improve how easily pedestrians can understand the layout of the capital and find their way around by introducing clear and consistent signage and maps. The programme has begun in Covent Garden and Bloomsbury, and future schemes are anticipated around the borough. Camden has also established a 'Place Shaping Board' to consider the most appropriate ways to shape the services, facilities, infrastructure and public realm to meet the needs of current and future populations (see section 4 – *Delivering and Monitoring the Core Strategy*).
- 14.17 Further information on measures being taken by the Council and its partners to improve the quality of our streets and public places is included in CS2 – *Growth areas*, CS8 – *Promoting Camden's centres and shops*, CS11 – *Promoting sustainable and efficient travel*, CS15 – *Protecting and improving our parks and open spaces and encouraging biodiversity*, and CS17 – *Making Camden a safer place*.
- 14.18 High quality landscaping plays an important role in the attractiveness and character of our surroundings. It can improve the setting of buildings, bring trees and other greenery into built-up areas to relieve the hard landscaping and provide shade, and provide habitats for wildlife. The Council will expect development schemes to provide a high standard of landscaping and boundary features, such as walls and fences. We will encourage appropriate use of landscaping in the form of 'green roofs', 'brown roofs' and 'green walls' which have a number of environmental benefits (e.g. in providing wildlife habitats, in helping to cool and insulate buildings and in retaining water, helping to

reduce flooding), as well as being visually attractive. More detail on our approach to landscaping is set out in the Council's Camden Planning Guidance supplementary document and policy DP22 in Camden Development Policies.

## Access

- 14.19 Good access benefits everyone. However, many people are disadvantaged by poor access to facilities and vulnerable and disadvantaged groups, such as the elderly and disabled people, can be particularly affected. Poor access can be caused by difficulties in reaching facilities or by difficulties in using the facilities themselves. The Council requires new buildings and spaces to be inclusive and accessible to all. As accessibility is influenced by perceptions as well as physical factors, buildings should also be designed to appear, as well as be, fully accessible. The Council will require Design and Access Statements for developments to show how the principles of inclusive design, ensuring access for all, have been integrated into the proposed development, and how inclusion will be maintained and managed.
- 14.20 Making roads and pavements and the spaces between buildings fully accessible is as important as making the buildings themselves accessible. The Council will seek improvements for all pedestrians to ensure good quality access and circulation arrangements, including improvement to existing routes and footways. The Camden Streetscape Design Manual and our Camden Planning Guidance supplementary document provide more detailed guidance on this issue.

## Views

- 14.21 A number of London's most famous and valued views originate in, or extend into, Camden. These are:
- views of St Paul's Cathedral from Kenwood, Parliament Hill and Primrose Hill;
  - views of the Palace of Westminster from Primrose and Parliament Hills; and
  - background views of St Paul's from Greenwich and Blackheath.
- 14.22 The Council will protect these views in accordance with London-wide policy and will resist proposals that would harm them. Where existing buildings that affect a view are redeveloped it is expected that any replacement building will be of a height that does not harm the view. The current framework for protecting these views is set by the London Plan (policies 4B.16 – 4B.18) and the Mayor's London View Management Framework supplementary planning guidance.
- 14.23 The Council will also consider the impact of a scheme, in terms of the townscape, landscape and skyline, on the whole extent of a view ('panorama'), not just the area in the view corridor. Developments should not detract from the panorama as a whole and should fit in with the prevailing pattern of buildings and spaces. They should seek to avoid buildings that tightly define the edges of the viewing corridors and not create a crowding effect around the landmark.
- 14.24 The Council will also seek to protect locally important views that contribute to the interest and character of the borough. These may include:
- views of and from large public parks and open spaces, such as Hampstead Heath, Kenwood Estate, Primrose Hill and Regent's Park, including panoramic views, as well as views of London Squares and historic parks and gardens;
  - views relating to Regent's Canal;
  - views into and from conservation areas; and
  - views of listed and landmark buildings and monuments and statutes (for example, Centrepont, St Stephen's, Rosslyn Hill and St George's, Bloomsbury).
- 14.25 We will seek to ensure that development is compatible with such views in terms of setting, scale and massing and will resist proposals that we consider would cause harm to them. Development will not generally be acceptable if it obstructs important views or skylines, appears too close or too high in relation to a landmark or impairs outlines that form part of the view. Further guidance on important local views is set out in our supplementary planning documents, for example in individual conservation area statements, appraisals and management strategies and the Planning Framework for the Tottenham Court Road Station and St Giles High Street Area.

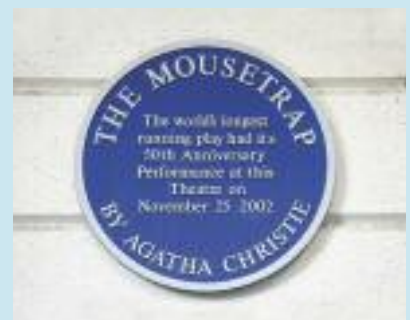


## Camden's character

Camden is characterised by a great richness and variety in its built and natural environment, with a valuable heritage of local, national and international significance. The following section describes the places, buildings and features that give Camden its distinctive character.

**The southern part of the borough** is where most of Camden's future growth will take place. It forms part of Central London and has a richly varied and dense character. The planned Georgian streets and squares (e.g. Bedford, Russell, Fitzroy) of Bloomsbury are evidence of the early expansion of London in a form that was architecturally groundbreaking. Modest mews developments to the rear of the terraces contrast in scale and are a particularly characteristic type here and elsewhere in the borough. Regents Park and Nash's 1820s residential development sit at the south western boundary of the borough, contrasting with the earlier Georgian developments in the area.

King's Cross and Euston are parts of the borough that are expected to experience the most change and development over the next fifteen years. Railways have had a significant impact on the appearance of the borough from the 19th century to the present day. These brought monumental architecture and inward migration to the borough and their viaducts, cuttings, tunnels and buildings still affect the shape of development in many parts of Camden, in particular to the north of Euston Road. King's Cross was the largest station in England when it opened and is the earliest great London terminus still intact in its original form. St Pancras (by George Gilbert Scott), now the new London terminus for Eurostar, can claim to be Britain's most impressive station in terms of both architecture and engineering and the station's dramatic roof line forms an important local landmark. Euston station, its ancillary accommodation and railway lines have a major impact on the nature of its surroundings and its future redevelopment will create opportunities to improve the local environment and links between neighbouring areas.





The Inns of Court were some of the earliest establishments in the southern part of the borough. The historic buildings, courtyards and squares of Lincoln's Inn and Gray's Inn give a distinctive atmosphere to this part of Camden, and create oases away from surrounding busy roads. Camden's Central London area also contains Seven Dials with its unusual star-shaped street layout and sundial pillar and the brick, semi-industrial buildings and intimate spaces of Hatton Garden, which were developed in the 19th century to house the workshops and offices of the jewellery trade. The area remains an internationally significant jewellery quarter.

Camden is home to a large number of further education establishments and most are located in the southern part of the borough, including the University of London, London School of Tropical Medicine, Central St Martin's College of Art and Design and the Royal Academy of Dramatic Art. These play a significant role in shaping the character and appearance of this part of the borough. The south of the borough also houses a number of nationally important hospitals and medical research institutions, including Great Ormond Street Hospital, the National Hospital for Neurology and Neurosurgery and the Wellcome Trust.





The town centres of Camden Town, Kentish Town and Kilburn High Road are key elements in **the central part of the borough**. These centres developed in a piecemeal fashion along historic routes into London. They are now marked by continuous, close grained development with commercial units at ground floor level on either side of the road, with terraced housing of a similar density on the streets to the east and west, and little open space. Buildings types are generally consistent in appearance, and public houses are frequent landmarks, which echo the original inns and travellers rests along the historic routes. There is a narrow range of scale and height, and dwellings usually have small gardens to front and rear. Camden Town is strongly characterised by its markets and entertainment. These create a strong draw for tourists and influence the style and appearance of development, which is in many cases colourful and individual.

The areas between these major roads and town centres are characterised by speculative, residential development from the mid to late 19th century for the then new middle classes. These show a variety of distinctive architectural forms and scales, with detached and semi-detached houses in classical Italianate form in Belsize and an eclectic variety of styles including neo-Gothic, Queen Anne, Domestic Revival, Arts & Crafts in Fitzjohns/Netherhall, Redington/Frognaal and South Hampstead/Swiss Cottage. Gospel Oak, West Hampstead and the southern parts of Dartmouth Park were developed to a higher density with terraced houses, smaller gardens and have a more urban feel than Camden's other residential areas.

Social housing schemes are also an important element in the borough's built environment. St Andrews House on Saffron Hill is the oldest surviving public housing block in London whilst early 20th century examples include the London County Council's Bourne Estate on Leather Lane. The LLC's Ossulston Estate is considered the most important inner-city estate of the inter-war period. Post-war examples illustrate an architecturally ambitious programme of housing schemes by Camden Council following its creation in 1965, many of which are listed. The characteristic form was a megastructure of stepped terraces. This low rise, high density approach reflected traditional terraced housing, but provided light, privacy and private open space for all levels of accommodation. Examples are Brunswick Centre, and the estates of Fleet Road, Alexandra Road, Maiden Lane and Highgate New Town.

The Regent's Canal runs through the centre of the borough. Although it is often hidden from surrounding areas, it provides an area of nature conservation interest and amenity space along its course through King's Cross and Camden Town to Regent's Park.

**The northern part of the borough** benefits from the presence of the large open space of Hampstead Heath, which provides amenity and leisure space, a verdant setting to the surrounding development and famous views across London. Hampstead and Highgate are derived from medieval hamlets and have clearly defined village centres which reflect their origins. They have a variety of building types from cottages and terraces to detached houses and grand residences, with a generally densely packed, high quality urban grain of a range of styles, scales and ages. Both areas contain many high quality, architect-designed houses from the 19th and 20th centuries, many of which have become important parts of the local heritage and are listed for their national significance.





### Key evidence and references

- Conservation Area Statements/Appraisals/Management Strategies; London Borough of Camden; various dates
- Camden Walking Plan Second Edition 2006
- Camden Streetscape Design Manual 2005
- Planning Policy Guidance 16 – Archaeology and planning; DETR; 1990
- Conservation Principles, Policies and Guidance, English Heritage, 2008
- By Design: Urban Design in the Planning System – Towards Better Practice; DETR/CABE; 2000
- Planning Policy Statement 1 – Delivering Sustainable Development; ODPM; 2005
- Planning Policy Statement 5 – Planning for the Historic Environment; CLG; 2010
- Planning Policy Guidance 15 – Planning and the Historic Environment; DoE; 1994
- The London Plan (consolidated with Alterations since 2004); Mayor of London; 2008
- London View Management Framework Supplementary Planning Guidance; Mayor of London; 2007
- Sustainable design, climate change and the built environment; CABE Briefing; 2007
- Easy Access to Historic Buildings, English Heritage, 2004
- Easy Access to Historic Landscapes, English Heritage, 2005
- Seeing History in the View: Methodology for assessing the heritage value within views, English Heritage, 2008
- Guidance on Tall Buildings, English Heritage/CABE, 2007



# Camden Development Policies 2010-2025

## Local Development Framework





**If you would like this document in large print  
or Braille, or in another language, please  
contact 020 7974 5615**

Find out more about this document and the LDF by visiting [camden.gov.uk/ldf](http://camden.gov.uk/ldf)  
or by calling the LDF hotline 020 7974 5615/2043.

Forward Planning  
London Borough of Camden  
Town Hall Extension  
Argyle Street  
London WC1H 8EQ

Published November 2010.

Camden's Local Development Framework. Development Policies.

# Improving and protecting our environment and quality of life

## DP24. Securing high quality design

- 24.1 Core Strategy policy CS14 – *Promoting high quality places and conserving our heritage* sets out the Council's overall strategy on promoting high quality places, seeking to ensure that Camden's places and buildings are attractive, safe, healthy and easy to use and requiring development to be of the highest standard of design that respects local context and character. Camden has a unique and rich built and natural heritage, with many areas with their own distinct character, created by a variety of elements including building style and layout, history, natural environment including open spaces and gardens, and mix of uses. We have a duty to respect these areas and buildings and, where possible, enhance them when constructing new buildings and in alterations and extensions.
- 24.2 Policy DP24 contributes to implementing the Core Strategy by setting out our detailed approach to the design of new developments and alterations and extensions. These principles will ensure that all parts of Camden's environment are designed to the highest possible standards and contribute to providing a healthy, safe and attractive environment.
- 24.3 The Core Strategy also sets out our approach to other matters related to design, such as tackling climate change through promoting higher standards (CS13), the importance of community safety and security (CS17) and protecting amenity from new development (CS5). Further guidance on design is contained in our Camden Planning Guidance supplementary document.

### DP POLICY

#### DP24 – Securing high quality design

The Council will require all developments, including alterations and extensions to existing buildings, to be of the highest standard of design and will expect developments to consider:

- a) character, setting, context and the form and scale of neighbouring buildings;
- b) the character and proportions of the existing building, where alterations and extensions are proposed;
- c) the quality of materials to be used;
- d) the provision of visually interesting frontages at street level;
- e) the appropriate location for building services equipment;
- f) existing natural features, such as topography and trees;
- g) the provision of appropriate hard and soft landscaping including boundary treatments;
- h) the provision of appropriate amenity space; and
- i) accessibility.



## Promoting good design

- 24.4 The Council is committed to design excellence and a key strategic objective of the borough is to promote high quality, sustainable design. This is not just about the aesthetic appearance of the environment, but also about enabling an improved quality of life, equality of opportunity and economic growth. We will therefore apply policy DP24 to ensure that all developments throughout the borough, including alterations and extensions to existing buildings, are of the highest standard of design. In accordance with government guidance in Planning Policy Statement (PPS) 1 – *Delivering Sustainable Development* we will not accept design that is inappropriate to its context or which fails to take opportunities to improve the character and quality of an area and the way that it is used by residents and visitors.
- 24.5 Camden is a densely built-up borough where most development involves the replacement, extension or conversion of existing buildings. Design should respond creatively to its site and its context. This concerns both smaller-scale alterations and extensions and larger developments, the design and layout of which should take into account the pattern and size of blocks, open spaces, gardens and streets in the surrounding area (the ‘urban grain’).
- 24.6 The Council seeks to encourage outstanding architecture and design, both in contemporary and more traditional styles. Innovative design can greatly enhance the built environment and, unless a scheme is within an area of homogenous architectural style that is important to retain, high quality contemporary design will be welcomed. When assessing design, we will take into account government/CABE guidance *By Design – Urban Design in the planning system: towards better practice* and our own Camden Planning Guidance supplementary document.
- 24.7 Development should consider:
- the character and constraints of its site;
  - the prevailing pattern, density and scale of surrounding development;
  - the impact on existing rhythms, symmetries and uniformities in the townscape;
  - the compatibility of materials, their quality, texture, tone and colour;
  - the composition of elevations;
  - the suitability of the proposed design to its intended use;
  - its contribution to public realm, and its impact on views and vistas; and
  - the wider historic environment and buildings, spaces and features of local historic value.
- 24.8 Buildings should be designed to be as sustainable as possible. Environmental design and construction measures are set out in Policy DP22 – *Promoting sustainable design and construction*. Sustainable development also embraces principles of social sustainability which can be addressed by new development which:
- provides comfortable, safe, healthy and accessible space for its users;
  - is fit for purpose and can accommodate future flexibility of use;
  - provides a mix of uses and types of accommodation and provides for a range of needs within the community; and
  - provides sufficient amenity space for the promotion of health and wellbeing.





- 24.9 The re-use of existing buildings preserves the 'embodied' energy expended in their original construction, minimises construction waste and reduces the use of new materials. Many historic buildings display qualities that are environmentally sustainable and have directly contributed to their survival, for example the use of durable, natural, locally sourced materials, 'soft' construction methods, good room proportions, natural light and ventilation and ease of alteration. The retention and adaptation of existing buildings will be encouraged.
- 24.10 Due to the dense nature of Camden with extensive range and coverage of heritage assets, such as conservation areas, numerous listed buildings and five strategic views and two background views crossing the borough, the Council does not consider that it is practical to identify broad areas either suitable, or not suitable, for tall buildings. In the borough, a site may be suitable for a tall building while adjacent sites are not, due to impact on either views, conservations areas or listed buildings. Indeed, in some cases, suitability for a tall building differs across a single site. Given Camden's strategic environmental characteristics, the entire borough is considered as being within the 'sensitive' category, as defined by the English Heritage/CABE Guidance on Tall Buildings (2007). Tall building proposals in Camden will therefore merit detailed design assessments. As part of the revision of the Camden Planning Guidance SPD further clarity will be provided on tall buildings and design issues in Camden.

## Respecting local character

- 24.11 Given the highly built-up nature of Camden, careful consideration of the characteristics of a site, features of local distinctiveness, and the wider context is needed in order to achieve high quality development which integrates into its surroundings.
- 24.12 In order to best preserve and enhance the positive elements of local character within the borough, we need to recognise and understand the factors that create it. Designs for new buildings, and alterations and extensions, should respect the character and appearance of the local area and neighbouring buildings. Within areas of distinctive character, development should reinforce those elements which create the character. Where townscape is particularly uniform attention should be paid to responding closely to the prevailing scale, form and proportions and materials. In areas of low quality or where no pattern prevails, development should improve the quality of an area and give a stronger identity.
- 24.13 Development should not undermine any existing uniformity of a street or ignore patterns or groupings of buildings. Overly large extensions can disfigure a building and upset its proportions. Extensions should therefore be subordinate to the original building in terms of scale and situation unless, exceptionally, it is demonstrated that this is not appropriate given the specific circumstances of the building. Past alterations or extensions to surrounding properties should not necessarily be regarded as a precedent for subsequent proposals for alterations and extensions.
- 24.13 Design and Access statements should include an assessment of local context and character, and set out how the development has been informed by, and responds to it. We have prepared a series of Conservation Area Statements, Appraisals and Management Plans which describe the character and appearance of individual conservation areas and set out how the Council considers each can be conserved and enhanced. These should be used by developers to inform their understanding of the special character of the area, and we will take these into account when assessing development proposals in conservation areas. Development Policy DP25 – *Conserving Camden's heritage* provides further guidance on the preservation and enhancement of the historic environment.

## Detailing and materials

- 24.15 Architectural detailing should be carefully integrated into a building. In new development, detailing should be carefully considered so that it conveys quality of design and creates an attractive and interesting building. Architectural features on existing buildings, such as cornices, mouldings, architraves, porches and chimneys should be retained wherever possible, as their loss can harm a building by eroding its detailing. The insensitive replacement of windows and doors and the cladding and painting of masonry can also spoil the appearance of buildings and can be particularly damaging if the building forms part of a uniform group.
- 24.16 Schemes should incorporate materials of an appropriately high quality. The durability and visual attractiveness of materials will be carefully considered along with their texture, colour and compatibility with existing materials. Alterations and extensions should be carried out in materials that match the original or neighbouring buildings, or, where appropriate, in materials that complement or enhance a building or area.

## Contributing to the street frontage

- 24.17 Buildings should be visually interesting at street level, with entrances and windows used to create active frontages, which allow overlooking of public areas, provide a sense of vitality and contribute to making Camden a safer place (see Core Strategy policy CS17). Ground floors should be occupied by active uses and should not turn their back on streets and other public spaces.

## Incorporating building services equipment

- 24.18 Building services equipment, such as air cooling, heating, ventilation and extraction systems, lift and mechanical equipment, as well as fire escapes, ancillary plant and ducting should be contained within the envelope of a building or be located in a visually inconspicuous position.

## Responding to natural features

- 24.19 New developments should respond to the natural assets of a site and its surroundings, such as slopes and height differences, trees and other vegetation. Extensions and new developments should not cause the loss of any existing natural habitats, including private gardens. Core Strategy policy CS15 – *Protecting and improving our parks and open spaces and encouraging biodiversity* provides further guidance on nature conservation in Camden and the Council's strategy for trees.
- 24.20 Development within rear gardens and other undeveloped areas can often have a significant impact upon the amenity and character of an area. Gardens help shape their local area, provide a setting for buildings and can be important visually. Therefore they can be an important element in the character and identity of an area (its 'sense of place'). We will resist development that occupies an excessive part of a garden, and where there is a loss of garden space which contributes to the character of the townscape.
- 24.21 Development will not be permitted which fails to preserve or is likely to damage trees on a site which make a significant contribution to the character and amenity of an area. Where appropriate the Council will seek to ensure that developments make adequate provision for the planting and growth to maturity of large trees.







## Incorporating Landscaping

- 24.22 As with buildings, consideration of context is essential in the design of new hard and soft landscaping. Hard landscape elements (surfaces, boundary treatments etc), and the materials from which they are made, play a significant role in defining the character and attractiveness of a site or area and reinforcing local distinctiveness. New planting can contribute to the attractiveness of a development, soften and balance the impact of buildings and contribute to the biodiversity value of a site. Effective maintenance is often essential to the success of soft landscaping (shrubs, grass etc) and, where appropriate, the Council will expect planting plans to be accompanied by a maintenance schedule. New hard and soft landscaping should be of high quality and should positively respond to its local character.

## Providing amenity space

- 24.23 Private outdoor amenity space can add significantly to resident's quality of life and applicants are therefore encouraged to explore all options for the provision of new private outdoor space. Gardens, balconies and roof terraces are greatly valued and can be especially important for families. However, the densely built up nature of the borough means that the provision of private amenity space can be challenging, and the Council will require that the residential amenity of neighbours be preserved, in accordance with policy DP26 – *Managing the impact of development on occupiers and neighbours* and Core Strategy policy CS5 – *Managing the impact of growth and development*.

## Accessibility

- 24.24 In line with policy DP29 – *Improving access* the Council will expect all buildings and places to meet the highest practicable standards of access and inclusion. Any adaptation of existing buildings must therefore address this issue and respond to access needs whilst ensuring that alterations are sympathetic to the building's character and appearance. Policy DP25 – *Conserving Camden's heritage* provides further guidance on providing access to listed buildings.

### Key evidence and references

- By Design: Urban Design in the Planning System – Towards Better Practice; DETR/CABE; 2000
- Planning Policy Statement (PPS) 1 – Delivering Sustainable Development, 2005
- Planning Policy Statement (PPS) 12 – Local Spatial Planning, 2008
- Making design policy work, CABE; 2005
- The London Plan (consolidated with alterations since 2004); Mayor of London; 2008
- Building in Context, CABE/English Heritage, 2002
- Tree and Woodland Framework for London, Mayor of London, 2005

## DP25. Conserving Camden's heritage

- 25.1 Camden has inherited a rich architectural heritage with many special places and buildings from many different eras in the area's history, from the historic villages of Hampstead and Highgate to Georgian squares and John Nash's Regent's Park terraces, from the Victorian engineering of St Pancras Station to iconic modern structures such as Centrepont. These places and buildings add to the quality of our lives by giving a sense of local distinctiveness, identity and history. 39 areas, covering much of the borough, are designated as conservation areas, recognising their special architectural or historic interest and their character and appearance. Also, thousands of buildings in Camden are nationally listed for their special historical or architectural interest (see map 3). We have a responsibility to preserve and, where possible, enhance these areas and buildings. This policy helps to implement Core Strategy policy CS14 – *Promoting high quality places and conserving our heritage*.

### DP POLICY

## DP25 – Conserving Camden's heritage

### Conservation areas

In order to maintain the character of Camden's conservation areas, the Council will:

- a) take account of conservation area statements, appraisals and management plans when assessing applications within conservation areas;
- b) only permit development within conservation areas that preserves and enhances the character and appearance of the area;
- c) prevent the total or substantial demolition of an unlisted building that makes a positive contribution to the character or appearance of a conservation area where this harms the character or appearance of the conservation area, unless exceptional circumstances are shown that outweigh the case for retention;
- d) not permit development outside of a conservation area that causes harm to the character and appearance of that conservation area; and
- e) preserve trees and garden spaces which contribute to the character of a conservation area and which provide a setting for Camden's architectural heritage.

### Listed buildings

To preserve or enhance the borough's listed buildings, the Council will:

- e) prevent the total or substantial demolition of a listed building unless exceptional circumstances are shown that outweigh the case for retention;
- f) only grant consent for a change of use or alterations and extensions to a listed building where it considers this would not cause harm to the special interest of the building; and
- g) not permit development that it considers would cause harm to the setting of a listed building.

### Archaeology

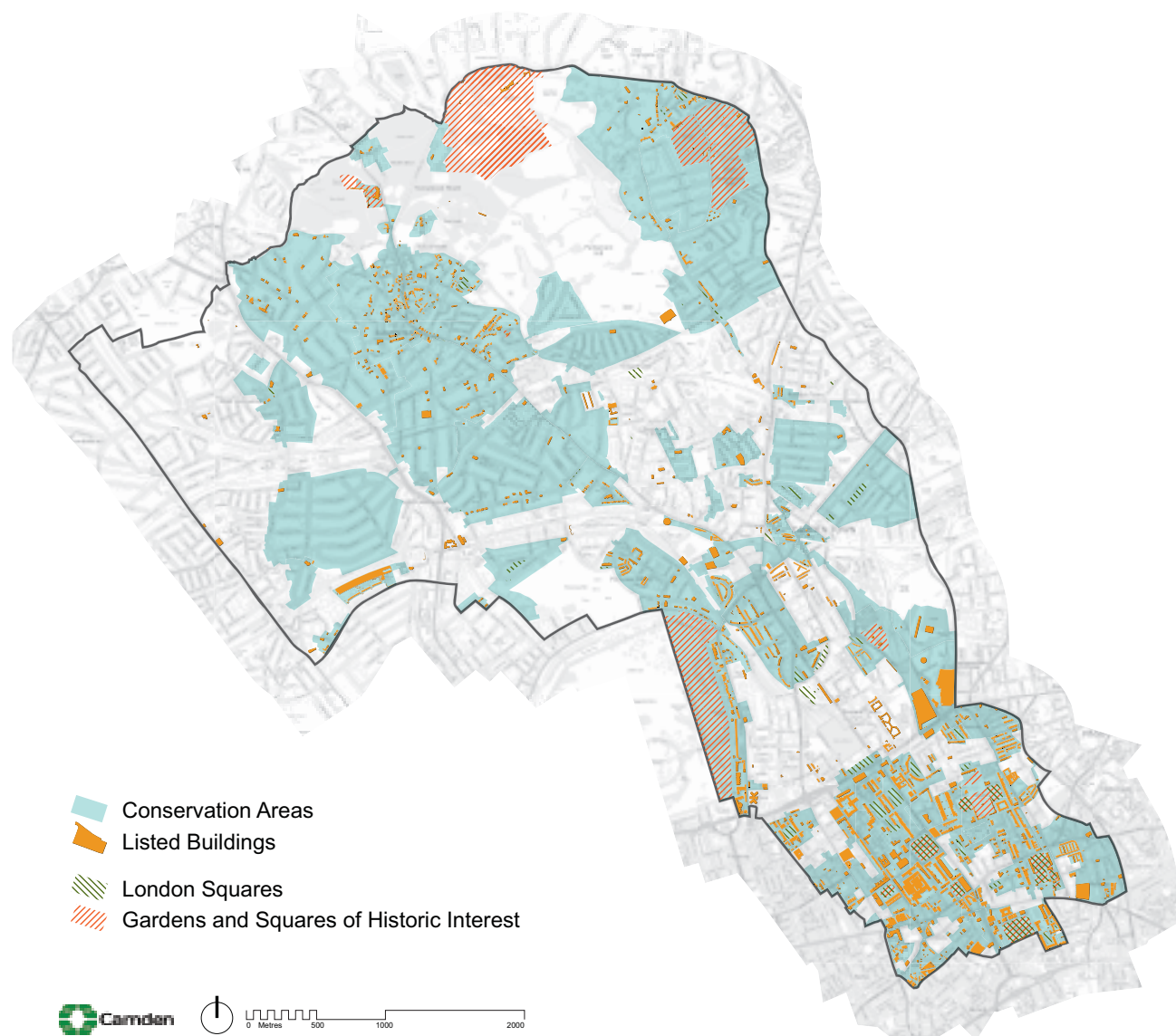
The Council will protect remains of archaeological importance by ensuring acceptable measures are taken to preserve them and their setting, including physical preservation, where appropriate.

### Other heritage assets

The Council will seek to protect other heritage assets including Parks and Gardens of Special Historic Interest and London Squares.



## Map 3: Heritage



This map is based on Ordnance Survey Material with the permission of Ordnance Survey on behalf of the Controller of Her Majesty's Stationery Office ©. Unauthorised reproduction infringes Crown copyright and may lead to prosecution or civil proceedings. Licence number LA100019726, year 2010.

## Conservation Areas

- 25.2 In order to preserve and enhance important elements of local character, we need to recognise and understand the factors that create this character. The Council has prepared a series of conservation area statements, appraisals and management plans that assess and analyse the character and appearance of each of our conservation areas and set out how we consider they can be preserved and enhanced. We will take these into account when assessing planning applications for development in conservation areas. We will seek to manage change in a way that retains the distinctive characters of our conservation areas and will expect new development to contribute positively to this. The Council will therefore only grant planning permission for development in Camden's conservation areas that preserves and enhances the special character or appearance of the area. The character of conservation areas derive from the combination of a number of factors, including scale, density, pattern of development, landscape, topography, open space, materials, architectural detailing, and uses. These elements should be identified and responded to in the design of new development. Design and Access Statements should include an assessment of local context and character, and set out how the development has been informed by it and responds to it.

- 25.3 The character and appearance of a conservation area can be eroded through the loss of traditional architectural details such as historic windows and doors, characteristic rooftops, garden settings and boundary treatments. Where alterations are proposed they should be undertaken in a material of a similar appearance to the existing. Traditional features should be retained or reinstated where they have been lost, using examples on neighbouring houses and streets to inform the restoration. The Council will consider the introduction of Article 4 Directions to remove permitted development rights for the removal or alterations of traditional details where the character and appearance of a conservation area is considered to be under threat.
- 25.4 Historic buildings in conservation areas can be sensitively adapted to meet the needs of climate change and energy saving – preserving their special interest and ensuring their long term survival. For detailed advice on energy saving in historic buildings and conservation areas visit the English Heritage website and our Camden Planning Guidance supplementary document. Changes in patterns of use can also erode the character of an area. It is therefore important that, whenever possible, uses which contribute to the character of a conservation area are not displaced by redevelopment.
- 25.5 The value of existing gardens, trees and landscaping to the character of the borough is described in DP24 – Securing High Quality Design, and they make a particular contribution to conservation areas. Development will not be permitted which causes the loss of trees and/or garden space where this is important to the character and appearance of a conservation area. DP27 – Basements and lightwells provides further guidance on this issue where landscaping may be affected by basements and other underground structures.
- 25.6 The Council has a general presumption in favour of retaining buildings that make a positive contribution to the character or appearance of a conservation area, whether they are listed or not so as to preserve the character and appearance of the conservation area. We will not grant conservation area consent for the total or substantial demolition of such a building where this would harm the appearance of the conservation area, unless exceptional circumstances are shown that outweigh the case for retention. Applicants will be required to justify the demolition of a building that makes a positive contribution to a conservation area, having regard to Policy HE7 of Planning Policy Statement (PPS) 5: Planning for the Historic Environment, Camden's conservation area statements, appraisals and management plans and any other relevant supplementary guidance produced by the Council.





- 25.7 When considering applications for demolition, the Council will take account of group value, context and setting of buildings, as well as their quality as individual structures and any contribution to the setting of listed buildings. Applications must clearly show which buildings or parts of buildings are to be demolished.
- 25.8 Applications for total or substantial demolition in conservation areas must demonstrate to the Council's satisfaction that effective measures will be taken during demolition and building works to ensure structural stability of retained parts and adjoining structures. Before conservation area consent for demolition is granted, the Council must be satisfied that there are acceptable detailed plans for the redevelopment. Any replacement building should enhance the conservation area to an appreciably greater extent than the existing building. When a building makes little or no contribution to the character and appearance of a conservation area, any replacement building should enhance the conservation area to an appreciably greater extent than the existing building.
- 25.9 Due to the largely dense urban nature of Camden, the character or appearance of our conservation areas can also be affected by development which is outside of conservation areas, but visible from within them. This includes high or bulky buildings, which can have an impact on areas some distance away, as well as adjacent premises. The Council will therefore not permit development in locations outside conservation areas that it considers would cause harm to the character, appearance or setting of such an area.
- 25.10 Our Camden Planning Guidance supplementary document provides further information on our approach to conservation areas.

## Listed buildings

- 25.11 Camden's listed buildings and structures provide a rich and unique historic and architectural legacy. They make an important and valued contribution to the appearance of the borough and provide places to live and work in, well known visitor attractions, and cherished local landmarks. We have a duty to preserve and maintain these for present and future generations. There are over 5,600 buildings and structures in Camden that are on the statutory list for their special architectural or historic interest.
- 25.12 The Council has a general presumption in favour of the preservation of listed buildings. Total demolition, substantial demolition and rebuilding behind the façade of a listed building will not normally be considered acceptable. The matters which will be taken into consideration in an application for the total or substantial demolition of a listed building are those set out in Policy HE7 of PPS5.





- 25.13 In order to protect listed buildings, the Council will control external and internal works that affect their special architectural or historic interest. Consent is required for any alterations, including some repairs, which would affect the special interest of a listed building. The matters which will be taken into consideration in an application for alterations and extensions to a listed building are those set out in Policy HE7 of PPS5.
- 25.14 Where listed buildings are being altered for the provision of access for people with disabilities, the Council will balance their needs with the interests of conservation and preservation. We will expect design approaches to be fully informed by an audit of conservation constraints and access needs, and to have considered all available options. The listed nature of a building does not preclude the development of inclusive design solutions, and the Council expects sensitivity and creativity to be employed in achieving solutions that meet the needs of accessibility and conservation.
- 25.15 The setting of a listed building is of great importance and should not be harmed by unsympathetic neighbouring development. While the setting of a listed building may be limited to its immediate surroundings, it often can extend some distance from it. The value of a listed building can be greatly diminished if unsympathetic development elsewhere harms its appearance or its harmonious relationship with its surroundings. Applicants will be expected to provide sufficient information about the proposed development and its relationship with its immediate setting, in the form of a design statement.
- 25.16 Proposals that reduce the energy consumption of listed buildings will be welcomed provided that they do not cause harm to the special architectural and historic interest of the building or group. Energy use can be reduced by means that do not harm the fabric or appearance of the building, for instance roof insulation, draught proofing and secondary glazing, more efficient boilers and heating/lighting systems, and use of green energy sources. Depending on the form of the building, renewable energy technologies may also be installed, for instance solar water heating and photovoltaics.
- 25.17 Our Camden Planning Guidance supplementary document provides further information on our approach to listed buildings.



## Map 4: Archaeological Priority Areas



## Archaeology

25.18 Camden has a rich archaeological heritage comprised of both above and below ground remains, in the form of individual finds, evidence of former settlements and standing structures. These remains are vulnerable to modern development and land use. There are 13 archaeological priority areas in the borough (see map 4):

<b>Hampstead Heath</b>	<b>Hampstead</b>	<b>Highgate</b>
<b>London Suburbs</b>	<b>South End</b>	<b>Bagnigge Wells</b>
<b>St Pancras</b>	<b>West End</b>	<b>Canalside Industry</b>
<b>Kentish Town</b>	<b>Kilburn</b>	
<b>Battle Bridge</b>	<b>Belsize</b>	



- 25.19 The archaeological priority areas provide a general guide to areas of archaeological remains, but do not indicate every find site in the borough. These are based on current knowledge and may be refined or altered as a result of future archaeological research or discoveries.
- 25.20 It is likely that archaeological remains will be found throughout the borough, both within and outside the archaeological priority areas. Many archaeological remains have yet to be discovered, so their extent and significance is not known. When researching the development potential of a site, developers should, in all cases, assess whether the site is known or is likely to contain archaeological remains. Where there is good reason to believe that there are remains of archaeological importance on a site, the Council will consider directing applicants to supply further details of proposed developments, including the results of archaeological desk-based assessment and field evaluation. Scheduled monument consent must be obtained before any alterations are made to scheduled ancient monuments. Camden has only one scheduled ancient monument: Boadicea's Grave in Hampstead Heath.
- 25.21 If important archaeological remains are found, the Council will seek to resist development which adversely affects remains and to minimise the impact of development schemes by requiring either in situ preservation or a programme of excavation, recording, publication and archiving of remains. There will usually be a presumption in favour of in situ preservation of remains and, if important archaeological remains are found, measures should be adopted to allow the remains to be permanently preserved in situ. Where in situ preservation is not feasible, no development shall take place until satisfactory excavation and recording of the remains has been carried out on site, and subsequent analysis, publication and archiving undertaken by an archaeological organisation approved by the Council.
- 25.22 The Council will consult with, and be guided by, English Heritage and the Greater London Archaeology Advisory Service (GLAAS) on the archaeological implications of development proposals. The Greater London Sites and Monuments Record, maintained by English Heritage, contains further information on archaeological sites in Camden. When considering schemes involving archaeological remains, the Council will also have regard to government Planning Policy Guidance (PPG) 16 – Archaeology and Planning.

## Other heritage assets

- 25.23 In addition to conservation areas, listed buildings and archaeological remains, Camden contains 14 Parks and Gardens of Special Historic Interest, as identified by English Heritage. There are also 53 London Squares in the borough protected by the London Squares Preservation Act 1931. The Council will encourage the management of Parks and Gardens of Special Historic Interest and London Squares to maintain, and where appropriate, enhance their value and protect their setting. As set out within Core Strategy policy CS14 – *Promoting high quality places and conserving our heritage*, we will consult with English Heritage over proposals affecting these parks and gardens.

### Key evidence and references

- Greater London Sites and Monuments Record; English Heritage
- Guidance on conservation area appraisals, English Heritage, 2006
- Guidance on the management of conservation areas, English Heritage, 2006