

Camden Core Strategy 2010-2025

Local Development Framework



If you would like this document in large print or Braille, or in another language, please contact 020 7974 5615

Find out more about this document and the LDF by visiting camden.gov.uk/ldf or by calling the LDF hotline 020 7974 5615/2043.

Forward Planning
London Borough of Camden
Town Hall Extension
Argyle Street
London WC1H 8EQ

Published November 2010.

Camden's Local Development Framework. Core Strategy 2010.



Section 1

Location and management of Camden's growth

- 1.1 Camden is growing and changing. It is estimated that our population will increase by around 36,000 people (about 18% of total population) between 2006 and 2026, while London will grow by over a million people over the same period (15%). Future growth in Camden will be largely due to there being more births than deaths in the borough, although in-migration will also be a factor. In addition, our population is growing older with increases in the proportion of working age people over 45 and those of pensionable age between 60/65 and 74. (GLA Round 2006 Demographic Projections).
- 1.2 The forecast growth in population will be accompanied by an increase in the number of homes, offices and other land uses. The Mayor of London's London Plan contains a target of 5,950 additional homes in Camden from 2007/8 to 2016/17, which we are expected to exceed (see paragraph 1.7). National planning policy also promotes increasing the supply of homes. The Core Strategy must be consistent with national policies and in general conformity with the London Plan.
- 1.3 *A sustainable Camden that adapts to a growing population* is one of the four themes within the vision of *Camden Together*, Camden's Community Strategy. The Community Strategy says that we will find ways to adapt to Camden's growing population while protecting, promoting and enhancing our environment for us and for future generations. The Core Strategy is one of the main mechanisms for achieving this aim.
- 1.4 This section sets out the Council's overall spatial strategy for the borough. It explains where Camden's future growth and development will be focussed, gives more detail on our approach to growth areas, other highly accessible areas and areas which will experience more limited change. It also sets out our overarching approach, further developed in sections 2 and 3, to managing growth in a way that provides necessary homes, jobs and facilities and protects and improves Camden's environment, heritage and quality of life.



CS1. Distribution of growth

- 1.5 Many parts of the country are facing the challenge of where and how to accommodate a growing and changing population and the facilities and infrastructure needed to support it. Camden's character – as an already highly built up, inner London area, with limited land available for development, many established residential areas, often mixed with other uses, and many places of heritage, environmental and community value – mean that we face particular challenges in adapting to our growing population while improving and protecting our environment and quality of life. Policy CS1 sets out our overarching approach to the location of future growth and development in the borough.

CS POLICY

CS1 – Distribution of growth

Overall approach to growth and development:

The Council will focus Camden's growth in the most suitable locations, and manage it to make sure that we deliver its opportunities and benefits and achieve sustainable development, while continuing to preserve and enhance the features that make Camden such an attractive place to live, work and visit.

We will promote:

- a) a concentration of development in the growth areas of King's Cross, Euston, Tottenham Court Road, Holborn and West Hampstead Interchange;
- b) appropriate development at other highly accessible locations, in particular Central London and the town centres of Camden Town, Finchley Road / Swiss Cottage, Kentish Town, Kilburn High Road and West Hampstead; and
- c) more limited change elsewhere.

Following this approach, the Council expects that in the order of 12,250 additional homes will be provided in Camden between 2010/11 and 2024/25. We will identify, and provide guidance on, the main development opportunity sites in the borough through our Camden Site Allocations Local Development Framework document.

Making the best use of Camden's limited land

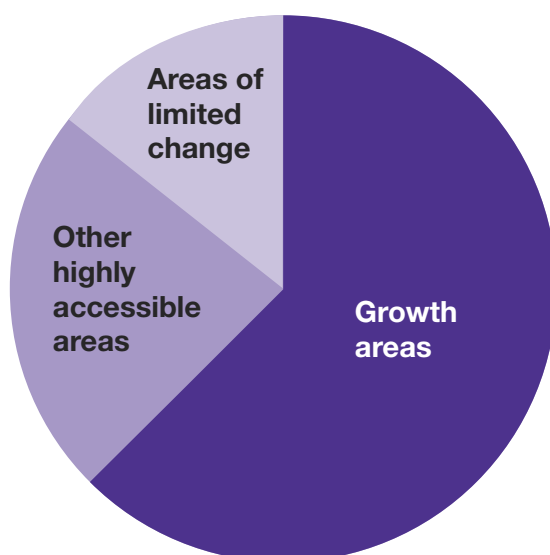
The Council will promote the most efficient use of land and buildings in Camden by:

- d) seeking development that makes full use of its site, taking into account quality of design, its surroundings, sustainability, amenity, heritage, transport accessibility and any other considerations relevant to the site;
- e) resisting development that makes inefficient use of Camden's limited land;
- f) expecting development that will significantly increase the demand of travel to be located in growth areas and other highly accessible parts of the borough;
- g) expecting high density development in Central London, town centres and other locations well served by public transport; and
- h) expecting the provision of a mix of uses in suitable schemes, in particular in the most accessible parts of the borough, including an element of housing where possible.

Overall approach to growth and development

- 1.6 The Council's overall strategy for managing future growth in Camden is to promote the provision of homes, jobs and other facilities in areas with significant redevelopment opportunities at, or near, transport hubs, and support appropriate development at other accessible locations, with more limited change elsewhere. This approach will:
- focus growth on places that can support higher density development, reducing pressure for substantial development in predominantly residential areas (although some development will take place throughout the borough);
 - allow us to better 'shape' places by promoting high quality design of buildings and places, securing necessary infrastructure, providing an appropriate mix of uses, including community facilities, and securing regeneration benefits; and
 - through promoting larger schemes increase our ability to provide more sustainable places, for example by maximising opportunities for local power and heating.
- 1.7 We expect our strategy to provide approximately 12,250 additional homes (including 9,850 new self-contained homes) between 2010/11 and 2024/25. This provision is expected to include around 7,250 homes from sites of 10 homes or more. The diagram below shows how these homes will be distributed around the borough. Just over 60% will be on sites in the growth areas, just over 20% will be in other highly accessible areas, and around 15% will be in areas of more limited change. In addition c2,600 homes will be provided from smaller sites and c2,400 from non-self contained dwellings and vacancies being returned into use. On the basis of past trends, we expect these homes to follow broadly the same distribution around the borough. This gives a total of around 815 homes per year between 2010/11-2024/25, which comfortably exceeds Camden's current London Plan target of 595 homes per year between 2007 and 2017. This means that we can meet our housing targets even if some identified sites do not come forward for development as envisaged.

Distribution of new homes by area 2010-2025 (based on identified sites for 10 or more homes)



- 1.8 Housing will be considered the priority land use of this Core Strategy and the Council's other Local Development Framework documents. Please see *policy CS6 – Providing quality homes* for our detailed approach to housing, and paragraphs 6.8 to 6.18 for more detailed information on our housing targets and the type of housing that will be provided.

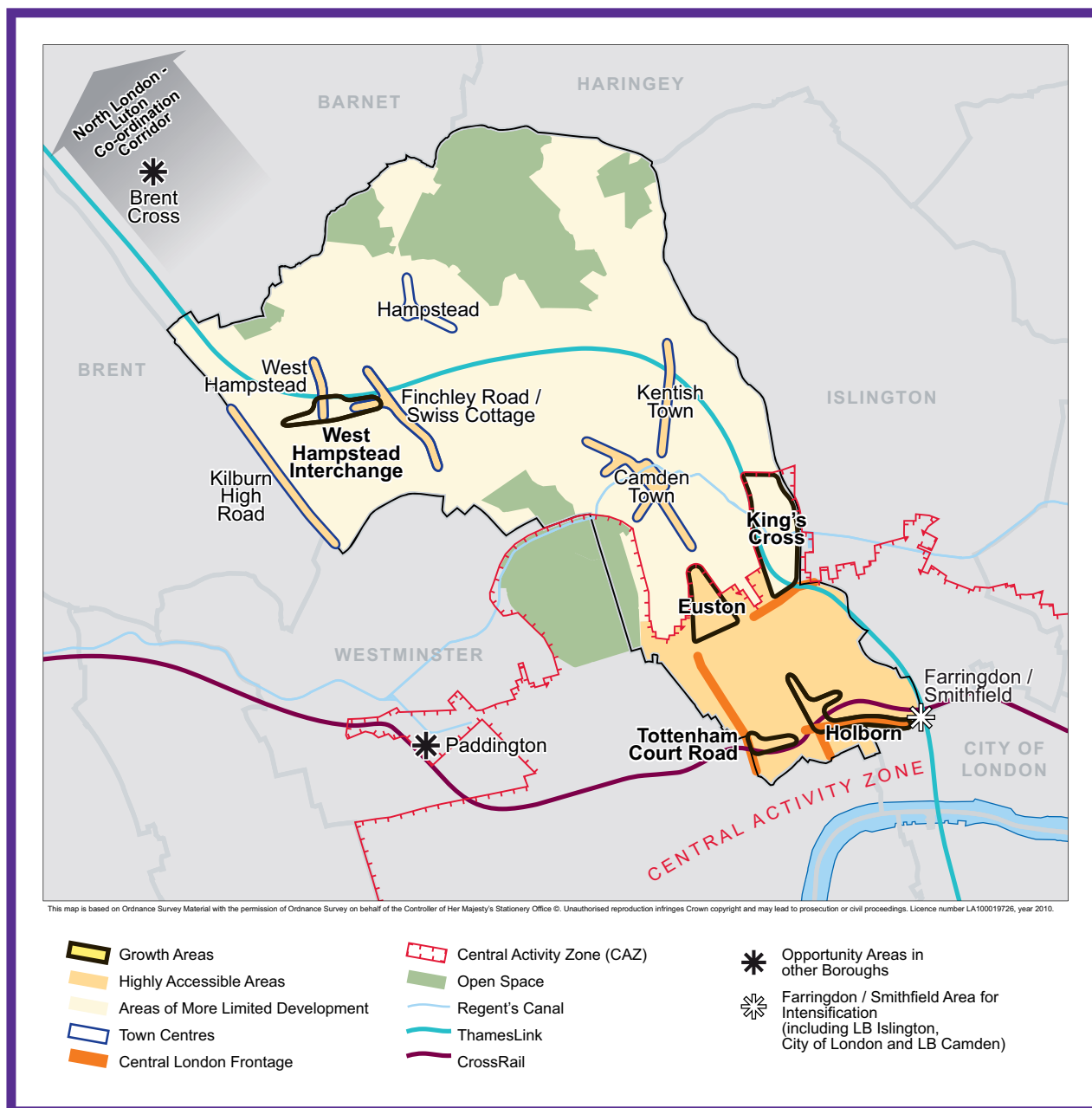


- 1.9 The Council’s overall spatial strategy is illustrated on Map 1 – Key Diagram. This shows the broad location of Camden’s growth areas, other highly accessible locations / town centres, major transport schemes and the borough’s main open spaces.
- 1.10 A key part of our strategy is to ensure that our growing population is supported by necessary infrastructure and services. The Camden Infrastructure Study 2009, commissioned by the Council, identified the borough’s infrastructure needs over the fifteen year period covered by this Core Strategy, taking into account expected growth. This forms the basis of Appendix 1 which sets out key infrastructure programmes and projects needed to deliver the Core Strategy. Section 4 sets out more detail on our approach to the provision of infrastructure. Developments will be expected to make appropriate contributions towards the infrastructure needs they generate.

Growth areas

- 1.11 King’s Cross, Euston, Tottenham Court Road, Holborn and West Hampstead Interchange will be the locations for the largest amount of Camden’s future growth. These areas are identified in the London Plan as suitable for large scale redevelopment or significant increases in jobs and homes, and are based around transport interchanges where increased capacity is planned. The majority of these areas are within Central London and therefore their redevelopment will contribute towards the continued success of Central London and to London’s national and international role, as well as providing opportunities to bring benefits to the borough and the local area. Please see policy CS9 – *Achieving a successful Central London* for our overall approach to Central London.
- 1.12 King’s Cross will be the focus of the most growth in Camden up to 2025, with large-scale redevelopment transforming the area and creating a new quarter for Camden and London. Redevelopment at Euston and around Tottenham Court Road will also provide substantial numbers of jobs and homes, as well as other uses and facilities. Development at West Hampstead Interchange is expected to be predominantly housing. Policy CS2 – *Growth areas* gives more detail on our approach to Camden’s main growth areas. The boundaries of the growth areas are shown on Maps 11-15 in Appendix 6.
- 1.13 King’s Cross, Euston and Tottenham Court Road (part in Westminster) are included in the London Plan as Opportunity Areas, that is, places able to accommodate substantial new jobs and homes, in association with public transport improvements. Holborn, West Hampstead Interchange and Farringdon/Smithfield (much of which lies in the City of London and Islington) are designated as Areas for Intensification, places with significant potential for redevelopment for housing, employment and other uses, although at a scale less than that for Opportunity Areas, again in association with public transport improvements.
- 1.14 Known development sites in the growth areas and at other locations throughout the borough, and the Council’s expectations for them, are identified in the *Camden Site Allocations* document, which also forms part of our Local Development Framework.

Map 1: Key Diagram



Other highly accessible locations

- 1.15 Beyond the growth areas there are a number of other parts of the borough which are considered suitable locations for significant development as they are highly accessible by a range of means of transport. These highly accessible areas are the Central London area outside of the growth areas, and the town centres of Camden Town, Finchley Road/Swiss Cottage, Kilburn High Road, Kentish Town and West Hampstead. These areas are considered to be particularly suitable locations for uses that are likely to lead to a significant increase in travel demand (for example, retail, offices, leisure and tourism), although the scale of development at these locations is expected to be less than that in the growth areas. Public transport accessibility to Hampstead is not considered to be sufficient for it to be a suitable location for uses that generate significant travel demand.
- 1.16 Policy CS3 gives more detail on our approach to Camden's other highly accessible locations. Policy CS9 sets out our overarching approach to Central London, with its unique character and challenges, where we seek to achieve a balance between its important contribution to London and the UK and local communities and facilities. Policy CS7 sets out our approach to Camden's town centres.

- 1.17 We will expect activities that are that are likely to lead to a significant increase in travel demand to be located in these parts of the borough or the growth areas. The Council will require applicants to demonstrate that all potential options for development in these areas have been thoroughly assessed before edge-of-centre and, finally, sites outside these areas are considered for development, taking into account their accessibility by a choice of means of transport; their likely effect on travel patterns and car use. This approach will help to reduce the need for car journeys, help promote walking, cycling and public transport and allow a single journey to serve more than one purpose. For more information on the level of development we consider creates significant travel demand please see Appendix 1 in Camden Development Policies.

Areas of more limited change

- 1.18 Other parts of the borough are generally expected to experience more limited development and change than will occur in the growth areas and other highly accessible locations. The scale of this will vary, from areas adjacent to growth areas, such as Somers Town, where the Council will seek to spread the redevelopment benefits of nearby schemes, to predominantly residential areas, where smaller scale and more incremental change is expected take place. Policy CS4 gives more detail on these areas and the Council's approach to them.

Managing growth

- 1.19 Central to the Council's overall approach to adapting to Camden's growing population is managing future growth to make sure that it is sustainable, that it provides opportunity and benefits to the borough and its local area, and that it protects and enhances our environment, heritage and quality of life.
- 1.20 Our overall approach to managing the impact of growth is set out in policy CS5, while more detail on aspects of our approach to managing growth is given in many other policies in this Core Strategy, particularly those in section 3 – *A sustainable and attractive Camden*, for example policy CS13 on tackling climate change and CS14 on promoting high quality places and conserving our heritage. Camden Development Policies contains detailed planning policies to support our strategy of managing growth, for example on high quality design (DP24), sustainable design and construction (DP22), and the impact of development on occupiers and neighbours (DP26).

Making the best use of Camden's limited land

- 1.21 If we are going to adapt successfully to Camden's growing population, we need to make the best use of the borough's limited land. The Council will promote the most efficient use of Camden's land and buildings while also seeking to improve the quality of our environment, protect the amenity of occupiers and neighbours and meet its other planning objectives.

Density

- 1.22 One way of making the most efficient use of our land and buildings is to encourage higher densities (that is, have more buildings or rooms in a given area). The Council wants to encourage developments with high densities in the most accessible parts of the borough (generally, Central London and the town centres of Camden Town, Finchley Road/Swiss Cottage, Kilburn High Road, Kentish Town and West Hampstead) and other appropriate locations. Such schemes should be of excellent design quality and sensitively consider the amenity of occupiers and neighbours and the character and built form of their surroundings, particularly in conservation areas. Good design can increase density while protecting and enhancing the character of an area. (Please see policy CS14 and Development Policies DP24 and D25 for more detail on our approach to design.)
- 1.23 The Council will expect the density of housing development to take account of the density matrix in the London Plan (Table 3A.2). As Camden is generally well served by public transport, the Council will expect densities towards the higher end of the appropriate density range in the matrix unless it can be demonstrated that the specific circumstances of a development mean this is not appropriate. Densities below the relevant range in the density matrix will not be permitted. In addition, development schemes with a density below that of the surrounding area will normally be resisted. Please also see paragraphs 2.9 to 2.10 in Camden Development Policies for more on our approach to density.

Mixed use developments

- 1.24 The provision of an appropriate mix of uses, both within areas and in individual buildings, can also contribute to successfully managing future growth in Camden and making efficient use of its limited land. A mix of uses can also:
- reduce commuting and the need for some other journeys, helping to cut congestion in the borough and improve air quality;
 - increase the provision of much-needed housing;
 - promote successful places that have a range of activities and are used throughout the day, increasing safety and security.
- 1.25 The Council will encourage the provision of a mix of uses in suitable locations and expect development proposals of an appropriate size in Central London and the town centres of Camden Town, Swiss Cottage and Kilburn High Road to contribute towards the supply of housing. This reflects the designation of housing as the priority land use of the Core Strategy (see policy CS6). Camden Development Policies policy DP1 contains further detail on the Council's approach to mixed use development. The Council's Site Allocations document will identify future development sites and provide guidance for their future development, including where mixed use development is appropriate.

Key evidence and references

- Camden Housing Needs Study Update 2008
- Camden Annual Monitoring Report 2007/08
- The London Plan (consolidated with Alterations since 2004); Mayor of London; 2008
- Planning Policy Statement (PPS) 1: Delivering Sustainable Development; ODPM; 2005
- Planning Policy Statement 3: Housing; ODPM; 2006
- Camden Together – Camden's Sustainable Community Strategy; 2007-2012
- GLA Round 2006 Demographic Projections



CS4. Areas of more limited change

- 4.1. Policy CS1 sets out the Council's strategy for the distribution of Camden's future growth, focussing larger development on five growth areas and other highly accessible locations (see Map 1- Key Diagram). This section gives more detail on our approach in the parts of the borough expected to experience more limited change.

CS POLICY

CS4 – Areas of more limited change

Parts of the borough outside of the growth areas and other highly accessible areas set out in policy CS1 will experience more limited development and change, although some development is expected to take place in most parts of Camden over the timescale of the Core Strategy.

The Council will ensure that development in the areas of more limited change respects the character of its surroundings, conserves heritage and other important features and provides environmental improvements and other local benefits where appropriate.

The Council will expect major developments taking place adjacent or near to areas of more limited change to bring benefits to these areas of an appropriate nature and scale. In particular, we will seek:

- a) improvements to walking routes and other links,
- b) contributions towards regeneration and training in deprived areas, and
- c) the provision of open space and other community facilities where there are local deficiencies.

- 4.2 The Council does not envisage that large scale development (in terms of the size of individual schemes) will take place in parts of the borough outside the growth areas (see policy CS2) and other highly accessible locations (see policy CS3), with the possible exception of estate regeneration programmes, which will be subject to consultation with the residents of each estate (see paragraphs 4.11, 4.12 and policy CS6). Development in the borough's areas of more limited change is generally expected to be smaller in scale, varying from household alterations to a small number of larger, more locally significant schemes.
- 4.3 Information on significant development sites within the areas of more limited change (generally those with an area above 1,000 square metres), and the Council's aspirations for them, are set out in the Camden Site Allocations document.
- 4.4 Camden's areas of more limited change can be broadly divided into the following:
- areas adjacent to growth areas, such as Somers Town;
 - Hampstead town centre; and
 - other areas.

Areas adjacent to growth area, such as Somers Town

- 4.5 Places adjacent to Camden's growth areas will be affected by the changes taking place in those areas, although they are not expected to experience major development themselves. The Council will seek to ensure that major redevelopment schemes bring appropriate benefits to their neighbouring communities and take full account of their surroundings and links to them.

- 4.6 For example, the Somers Town area lies between the borough's main growth areas of King's Cross and Euston. It has a high proportion of Council tenants and significant Bangladeshi and African communities. It also is relatively deprived, with low levels of economic activity, poor health, low life expectancy and community safety issues. The redevelopment of Euston Station provides an opportunity to encourage local employment, which will benefit Somers Town and other local communities, and build on the initiatives developed as part of the King's Cross redevelopment, such as the Construction and Skills Centre, to provide training, job brokerage and apprenticeships related to the scheme's construction. The Council's aspirations for the Euston area also include improvements to walking links and connections through the area and to Somers Town and other neighbouring areas. Other projects, such as investments in local schools as part of the Building School for the Future programme, will bring benefits to their local areas, for example in the provision of facilities for young people and the wider community. Please see policy CS2 for more detail on the Council's aspirations for Camden's growth areas and how they can contribute to neighbouring communities.

Hampstead town centre

- 4.7 Our overall strategy for growth, set out in policy CS1, focuses the majority of development on growth areas and other highly accessible areas. All of Camden's centres are considered to be highly accessible with the exception of Hampstead town centre, where the level of public transport accessibility is not considered to be sufficient for it to be a suitable location for development that significantly increase the demand for travel. Therefore, Hampstead town centre is expected to experience less development than Camden's other centres and their immediate surroundings.
- 4.8 Although the Council does not envisage substantial development in Hampstead town centre, due to the dynamic nature of retailing and changes in the nature of the provision of services and facilities, changes will occur in the centre in the future and to the uses of individual premises within it, some of which will be beyond the controls of the Council. The Council's overall approach to our town centres is set out in policy CS7 – *Protecting our town centres and shops*.
- 4.9 Hampstead town centre lies within the Hampstead conservation area. Any development here must be sensitive to the area's heritage and unique character. Please see policy CS14 and Camden Development Policies (DP24 and DP25) for more detail on our approach to promoting high quality places and conserving our heritage.





Other areas

- 4.10 Many parts of Camden, particularly in the northern part of the borough, are predominantly residential in character. Significant areas of these are designated as conservation areas, for example Belsize Park and Fitzjohns/Netherhall, where the Council will seek to preserve and enhance their valued character and heritage assets. It is expected that these parts of the borough will experience smaller scale development and more incremental change in future years. Please see policy CS14 and Camden Development Policies (DP24 and DP25) for more detail on our approach to promoting high quality places and conserving our heritage.
- 4.11 Other predominantly residential areas include large amounts of social rented housing, for example, Gospel Oak. Some of these areas are expected to benefit from estate regeneration during the plan period, while others are expected to experience relatively low levels of development (please see paragraph 6.23 for more on estate regeneration).
- 4.12 Gospel Oak is one of the Council's Place Shaping areas, where the Council is seeking to co-ordinate the use of resources to meet identified local needs (see Section 4 – Delivering and monitoring the Core Strategy). The Council is working closely with the local community to improve the provision of youth and community facilities and to tackle such issues as poor health, deprivation and low levels of employment. The Gospel Oak area contains a very high proportion of social rented housing concentrated around Lismore Circus. The Council is consulting with residents on the opportunities for regeneration in the area which could see some existing housing replaced by new homes, improving the tenure mix and the refurbishment of most of the remaining social rented homes in the area. An expression of interest in private finance initiative (PFI) funding is under consideration by the Housing and Communities Agency and, if approved and supported by the community, this would assist in generating very significant investment in housing and major infrastructure projects. Delivery of a regeneration programme in this area could include a local combined heating and power (CHP) system and the remodelling and renewal of the public realm over a 15 hectare area, in addition to substantial investment in housing.
- 4.13 A number of places in Camden are characterised by a mix of homes and other land uses, such as industrial premises, hospitals, shops and offices. These include Central London (which is covered by policies CS3 – *Other highly accessible areas* and CS9 – *Achieving a successful Central London*) and Kentish Town. The Council will seek to retain the diverse character of mixed areas, for example by safeguarding the borough's main Industry Area and protecting other industrial sites and premises (see policy CS8 – *Promoting a successful and inclusive Camden economy*).

Key evidence and references

- Camden Employment Land Review 2008
- Camden Retail Study 2008; Roger Tym and Partners

CS16. Improving Camden’s health and well-being

- 16.1 Improving our health and well-being requires more than improving access to medical treatment and services. There is an important link between the environment in which we live and how healthy we are, both physically and mentally. Factors such as age, gender and ethnicity influence our health and well-being, as well as wider factors such as education, employment, income, housing, social networks, air and water quality, nutrition, and access to social and public services. One of the key aims of Camden’s Community Strategy is to ensure that the health and well-being of all Camden residents improves by tackling the key health issues.
- 16.2 The Council, NHS Camden (formally known as the Primary Care Trust or PCT) and the local community (through the Local Strategic Partnership) have a number of key, shared priorities which are set out in Camden’s Joint Strategic Needs Assessment. These priorities include tackling smoking, alcohol misuse, obesity, drug misuse, as well as addressing mental health needs.
- 16.3 Policy CS16 contributes towards the overall aim of the Core Strategy to manage the impact of Camden’s future growth by setting out our approach to improving health and well-being in the borough. It should be read alongside Policy CS10 which sets out how this strategy protects community facilities, including health care facilities. Many measures set out in other parts of the Core Strategy also play a part in promoting good health and addressing health inequalities, for example:
- Protecting and improving our parks, play areas (see CS15) and leisure facilities (see CS10) which can encourage Camden’s residents to choose healthier and more active lifestyles, help to improve mental well-being and encourage social interaction;
 - improving housing standards and affordability (see CS6);
 - encouraging walking and cycling (see CS11);
 - providing job, training and educational opportunities (see CS8);
 - promoting community safety (see CS17); and
 - managing the impact of development on amenity (DP26).

CS POLICY

CS16 – Improving Camden’s health and well-being

The Council will seek to improve health and well-being in Camden. We will:

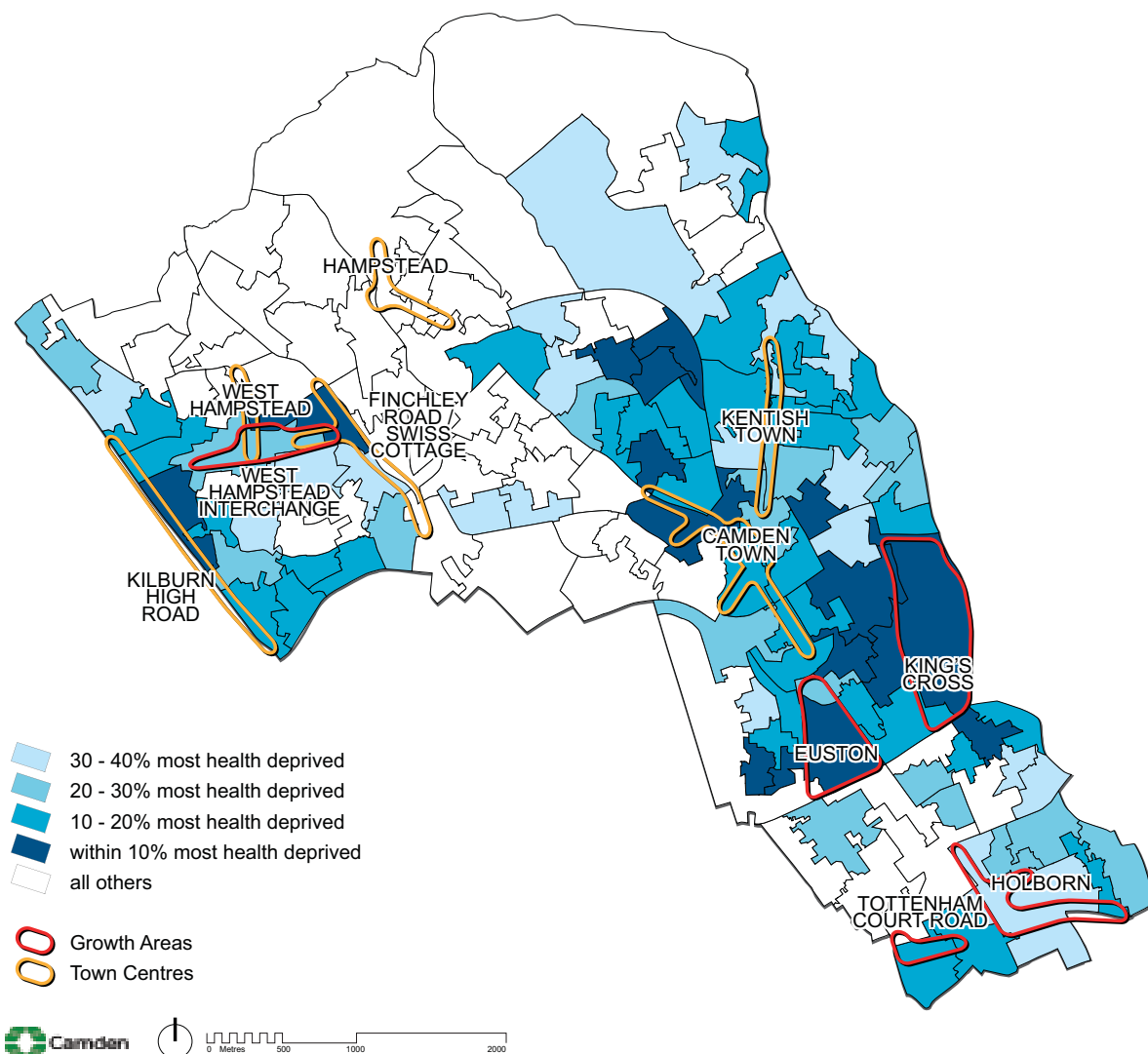
- a) support NHS Camden in its goal to reduce health inequalities by targeting measures to improve health in the areas with poorest health, including King’s Cross, St Pancras & Somers Town, Gospel Oak and Kilburn;
- b) protect existing health facilities in line with preferred approach CS10 – *Supporting community facilities and services*;
- c) support the provision of new or improved health facilities, in line with NHS London’s plans to consolidate and modernise its facilities;
- d) recognise and support the borough’s concentration of centres of medical excellence and their contribution to health-related research, clinical expertise, employment and training provision;
- e) recognise the impact of poor air quality on health and implement Camden’s Air Quality Action Plan which aims to reduce air pollution levels.

Health inequalities

- 16.4 NHS Camden recognises that one of its biggest challenges is addressing variations in health across its area. It is committed to addressing health inequalities particularly in Camden’s deprived areas where health care requirements are greater and where residents are less likely to access the health services that are available.
- 16.5 Map 9 shows health inequalities across the borough using the Indices of Deprivation 2007, which measured rates of poor health, mortality and disability, across all ages. The wards with the poorest levels of health are represented by the darker shading. Residents living in the most deprived wards are more likely to suffer from diet-related diseases, such as heart disease, cancers and strokes, which can contribute to higher mortality rates. For example, in St Pancras and Somers Town ward the mortality rate from heart disease is 98% higher than the national rate.²⁶ There is also a stark contrast between the most affluent ward (Hampstead) and most deprived ward (St Pancras and Somers Town) where there is a 10 year gap in male life expectancy.²⁷
- 16.6 The map also shows that the wards with the poorest health are located close to our growth areas. This provides us with the opportunity to ensure that new development in the growth areas will work alongside the initiatives discussed in this policy and throughout the Core Strategy to deliver improvements to the health and well-being of residents, particularly in the most deprived wards and Areas for Regeneration identified in the London Plan. For example, the King’s Cross growth area will include a new health centre and additional public open space.
- 16.7 In order to reduce health inequalities, the Council and NHS Camden are concentrating on reducing mortality rates in the wards suffering the highest rates, which currently include St Pancras and Somers Town, King’s Cross, Kilburn and Gospel Oak. Initiatives to improve premature mortality will be varied and include improving access to primary care (see section below on health facilities) as well as a range of health improvement and health promotion initiatives.
- 16.8 Projects and initiatives to improve resident’s health include:
- targeting people at risk of cardio vascular disease within the four most deprived wards, where it is the main cause of death;
 - enhancing GP services in the most deprived wards to provide more detailed advice and individual support to promote exercise and healthy eating and to reduce smoking and alcohol consumption;
 - promoting better access to healthy and nutritious food in the four most deprived wards through more local food growing opportunities. The Council is committed to providing 80 new growing spaces of varying sizes by 2012 and will provide support to individuals and organisations who wish to start growing their own food;
 - to reduce obesity in primary school age children in year 6 (Local Area Agreement target);
 - Camden Healthy Communities Action Group which works in the wards suffering the greatest health inequalities;
 - a Green Gym project, which allows residents to get fit by helping to improve seven of Camden’s open spaces, including Westbere Copse, Belsize Wood and Waterlow Park; and
 - the opening of eight free ‘Outdoor Gyms’ in or close to areas of open space to encourage the community to improve their health by taking more regular exercise.



Map 9: Health Deprivation



This map is based on Ordnance Survey Material with the permission of Ordnance Survey on behalf of the Controller of Her Majesty's Stationery Office ©. Unauthorised reproduction infringes Crown copyright and may lead to prosecution or civil proceedings. Licence number LA100019726, year 2010.

Providing and protecting health facilities

16.9 Camden has a wide range of health facilities, with four major hospitals, around 40 GP practices, and over 150 other facilities, such as dentists, optometrists, and pharmacists. Map 10 shows the distribution of health facilities across the borough. Camden's local and community health facilities are perceived to be difficult to access by local residents.²⁸ NHS Camden is therefore changing the way it delivers primary health care over the next five to ten years. The improvements are set out in the NHS Camden Strategy Plan 2008-2013 and will include the consolidation and modernisation of its facilities to develop fewer, larger health facilities.

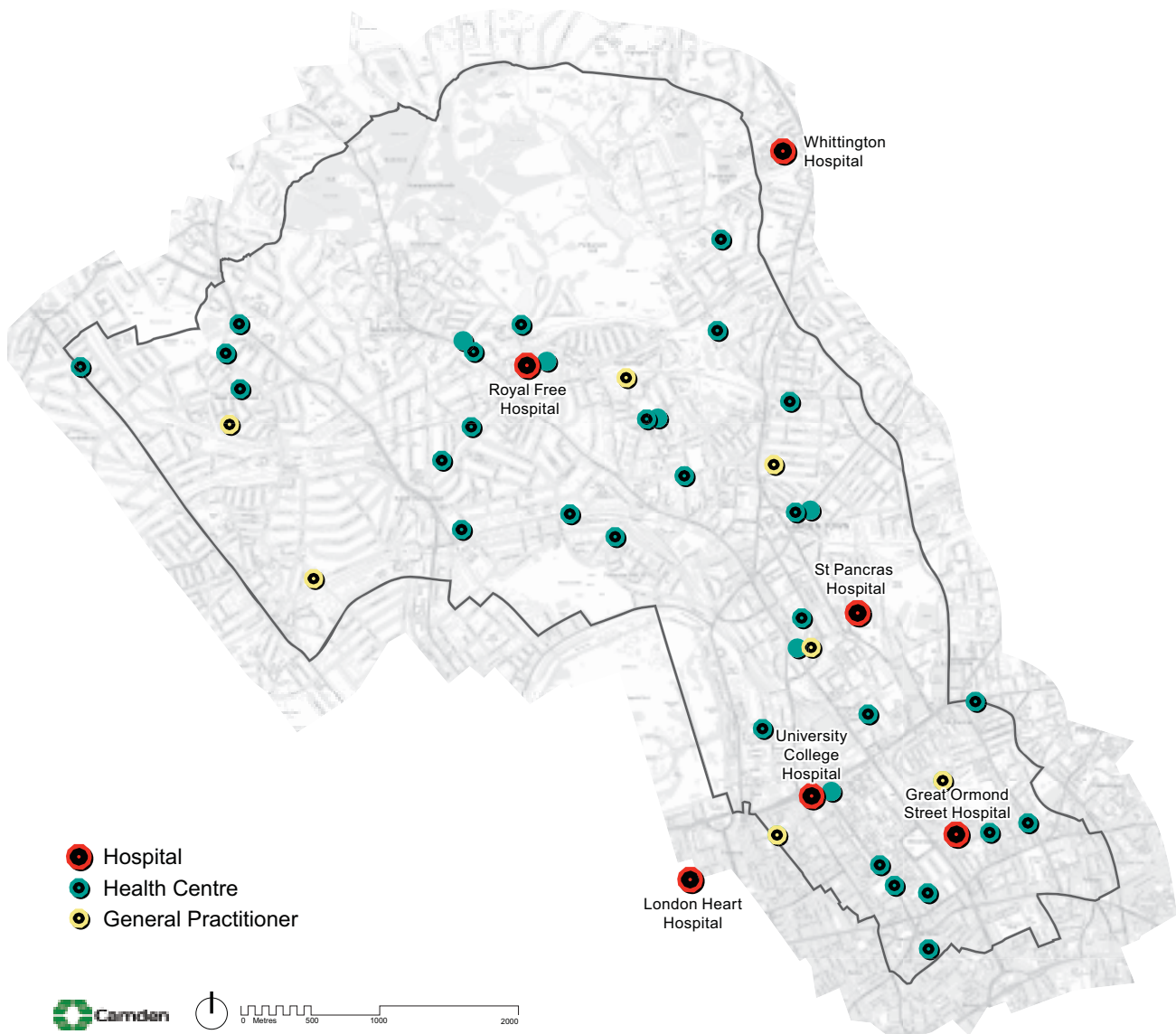
REFERENCES

²⁶ London Health Observatory Profile Report

²⁷ Camden's Annual Public Health Report 2007/08

²⁸ Camden NHS PCT Strategy Plan 2008-2013

Map 10: Health Facilities



This map is based on Ordnance Survey Material with the permission of Ordnance Survey on behalf of the Controller of Her Majesty's Stationery Office ©. Unauthorised reproduction infringes Crown copyright and may lead to prosecution or civil proceedings. Licence number LA100019726, year 2010.

16.10 After consultation with local residents, NHS Camden have established that ‘polyclinics’ in Camden will not be in individual buildings or health centres; but instead will involve linking the network of practices and health related facilities across the borough. By 2013, all practices in Camden will be linked to one of four of the following polyclinic networks:

- North Camden: this will involve 11 practices providing a range of additional services alongside a pilot urgent care service at the Royal Free Hospital in Hampstead;
- Kentish Town: this polyclinic network will cover two large GP practices, one of which has been redeveloped and now provides a range of services including nursing, dental access, out-patient and diagnostic services and a range of healthy living activities;
- South Camden: this will link all the practices in south Camden. NHS Camden will commission an urgent care centre and a new practice for this polyclinic. The location of the new facilities is subject to a site search and further public consultation;
- West Camden: this polyclinic network will be based around the Belsize Priory area in Kilburn.

NHS Camden will also commission a new health centre close to King’s Cross station, in the King’s Cross growth area.

- 16.11 As well as Camden's network of GP surgeries, health centres and dentists, we also have a significant concentration of secondary health facilities in the borough. These include four general hospitals, six specialist hospitals and a range of centres that provide care and support for the elderly, children and families, for people with mental health needs, for the mentally ill and many other groups. Policy CS6 contains more information on residential care facilities.
- 16.12 The Council will support the provision of additional health care facilities and will work with NHS Camden and other service providers to make sure the borough has a necessary supply and distribution of premises to meet Camden's health care needs. (see Appendix 1 – *Key infrastructure programmes and projects* – items 13-20). Existing health care facilities are protected by policy CS10 – *Supporting community facilities and services*.

Centres of medical excellence

- 16.13 Camden has an internationally important concentration of medical education, research and care institutions. These make a significant contribution to the borough and the nation by providing healthcare facilities, specialist research, employment and education opportunities, and by encouraging innovation. We will seek to support these institutions, which include the University College London Hospital (UCLH), the Royal Free Hospital, Great Ormond Street Hospital and the Wellcome Trust, and balance their requirements with those of other sectors and the local community.

Air quality

- 16.14 Camden suffers from poor air quality which impacts on human health, particularly the very young, older people and those with existing heart and lung conditions. The avoidance of localised air pollution is therefore very important in avoiding a potential negative impact on health and on the environment. The Council has declared the whole borough an Air Quality Management Area (AQMA) for failing to meet the government's health based air quality objectives for nitrogen dioxide and particulate matter. An Air Quality Action Plan has been produced setting out measures to reduce air pollution emissions from a variety of sources including new developments. Policy DP32 in our Camden Development Policies Local Development Framework document sets out how we will expect developments to reduce their impact on air quality. Please also see CS11 – *Promoting sustainable and efficient travel* for more on our approach to improving air quality through transport measures.

Contaminated land

- 16.15 In order to protect the health and well-being of local residents, workers and visitors, the Council will expect proposals for the redevelopment of sites that are known to be contaminated, have the potential to be contaminated, or are located in proximity to such sites to take appropriate remedial action to the Council's satisfaction. For example, sites that have been used for vehicle repair, industrial processes and petrol stations could have land contamination issues. Remedial action is particularly important in developments where people will have access to the ground for gardening, play or planting food for consumption. Please refer to Planning Policy Guidance 23 – Planning and Pollution Control, the Council's Contaminated Land Strategy and our Camden Planning Guidance supplementary document for more information.

Key evidence and references

- Camden Joint Strategic Needs Assessment
- Camden's Air Quality Action Plan
- Good food for Camden: The healthy and sustainable food strategy (2009-2012)
- NHS Camden Strategy Plan 2008-2013
- Camden PCT Commissioning Strategy Plan 2007
- Camden PCT Annual Public Health reports 1998 to 2007
- Camden PCT Estates Strategy 2006
- Health Issues in Planning: Best Practice Guidance, Mayor of London 2007

CS18. Dealing with our waste and encouraging recycling

- 18.1 The amount of waste we produce is increasing and the traditional ways of dealing with it (for example, exporting it to landfill sites outside London) are becoming increasingly unacceptable, financially and environmentally. Therefore, we need to find better ways of dealing with our waste, taking more responsibility for dealing with it within London. This will include reducing the amount of waste we produce, increasing the re-use and recycling of materials and finding sites for new waste facilities.
- 18.2 We also face specific challenges in dealing with waste in Camden. For example, the borough's ability to be self-sufficient in waste is limited by its built-up character and the lack of sites on which to build waste management facilities. Also, the nature of Camden's housing stock, with a large proportion of flats and a significant number of homes without gardens, means that some homes have limited space for storing recycling containers and reduced opportunities for composting.
- 18.3 The Council recognises that Camden cannot adequately deal with its waste in isolation. Therefore, it is a member of the North London Waste Authority, which is responsible for the disposal of waste collected in the boroughs of Barnet, Camden, Enfield, Haringey, Hackney, Islington and Waltham Forest.

CS POLICY

CS18 – Dealing with our waste and encouraging recycling

The Council will seek to make Camden a low waste borough. We will:

- | | |
|--|--|
| <p>a) aim to reduce the amount of waste produced in the borough and increase recycling and the re-use of materials to meet our targets of 40% of household waste recycled by 2010, 45% by 2015 and 50% by 2020;</p> <p>b) make sure that developments include facilities for the storage and collection of</p> | <p>waste and recycling;</p> <p>c) deal with North London's waste by working with our partner boroughs in the North London Waste Authority to produce a North London Waste Plan, which will ensure that facilities are provided to meet the amount of waste allocated to the area in the London Plan;</p> <p>d) safeguard Camden's existing waste site at Regis Road.</p> |
|--|--|

- 18.4 The Council is committed to reducing the amount of waste produced in the borough, encouraging recycling and managing collected waste in a sustainable way. It fully supports the objectives of sustainable waste management to move the management of waste up the 'waste hierarchy' of reduction, reuse, recycling and composting, to use waste as a source of energy where possible, and to only dispose of it as a last resort.
- 18.5 We believe that communities should take more responsibility for their own waste and will work to meet national and London-wide targets for waste and recycling. The London Plan sets targets for London to become more self sufficient in handling its waste, with facilities sought to manage 75% of London's waste by 2010, rising to 80% by 2015 and 85% by 2020. The London Plan expects Camden to manage 201,000 tonnes of waste in 2010 and 313,000 tonnes in 2020. However, we are pooling our waste with our partner boroughs in North London and working on joint solutions to the area's waste. The North London boroughs are together expected to deal with a total of 1,504,000 tonnes of waste in 2010, rising to 2,342,000 tonnes in 2020.
- 18.6 The North London Waste Authority and the seven boroughs have prepared a Joint Waste Strategy, which plans for managing the waste collected by the boroughs until 2020. This will be used to facilitate the provision of new waste management services, to increase recycling and recovery and divert more waste away from disposal to landfill.

- 18.7 In their role as planning authorities, the boroughs are preparing a joint planning document – the North London Waste Plan – which will sit alongside the North London Joint Waste Strategy to secure the sustainable management of our waste. It will identify appropriate locations, including existing sites, for a range of waste facilities to meet the needs of North London and will aim to ensure that benefits are maximised and the negative aspects minimised. In line with London Plan policy 4A.27, the North London Waste Plan will identify sites to deal with the management of waste collected by local authorities (municipal waste); commercial and industrial waste; construction, demolition and excavation waste; hazardous waste and agricultural waste. It will also contain some detailed policies to ensure that proposals for waste facilities will be dealt with consistently across the North London area.
- 18.8 Camden currently only has one waste site – the recycling and re-use centre at Regis Road – and will continue to safeguard it for waste use. The change of use of this site will only be permitted if a suitable compensatory waste facility is provided that replaces the facilities and services available at Regis Road (see London Plan policy 4A.24).
- 18.9 Camden will seek to increase recycling in the borough to meet the national target of 40% of household waste recycled by 2010, 45% by 2015 and 50% by 2020. Recycling in the borough has been increasing and over 27% of household waste was recycled in 2007/8, up from 16% in 2002/3. We have a number of schemes to encourage more recycling, including mini recycling centres, the reuse and recycling centre at Regis Road, and a weekly door-to-door recycling collection service. *Let's Talk Rubbish*, Camden's Waste Strategy, aims to reduce the amount of waste we produce in coming years and increase the amount we recycle. It contains our overall objectives for managing Camden's waste and sets out what we are doing to encourage recycling and waste reduction and provide recycling facilities and waste collection services.
- 18.10 To make sure that residents and businesses can properly store and sort their waste and to make household recycling as easy as possible, the Council will require developments to provide adequate facilities for recycling and the storage and disposal of waste. Facilities for home composting will be encouraged in appropriate development schemes. We will also seek to secure the re-use of construction waste on development sites to reduce resource use and the need to transport materials. The Council's Camden Planning Guidance supplementary planning document contains further information on the Council's expectations for on-site facilities for waste and recycling and on construction waste.
- 18.11 In 2008, the government made the preparation of Site Waste Management Plans mandatory for all developments worth £300,000 and more. These describe and quantify each waste type expected to be produced in the course of a project and identify the waste management action proposed for each, including re-using, recycling, recovery and disposal. To ensure an integrated approach to waste management and the highest possible re-use and recycling rates, the Council may require, through a planning condition, or as part of a Construction Management Plan, the submission of a site waste management plan prior to construction. Further details on Construction Management Plans can be found in the Camden Planning Guidance supplementary document.

Key evidence and references

- Let's Talk Rubbish – Camden's Waste Strategy 2007 – 2010 (revision 1, 2008)
- Camden Annual Monitoring Report 2007/8
- Camden Sustainability Task Force Report on Waste & Recycling; 2007
- North London Joint Waste Strategy 2004 – 2020; North London Waste Authority.
- The London Plan (consolidated with Alterations since 2004); Mayor of London; 2008
- Waste Strategy for England; Defra; 2007
- Rethinking Rubbish in London – The Mayor's Municipal Waste Strategy; 2003
- Planning Policy Statement (PPS) 10 – Planning for Sustainable Waste Management; 2005



Camden Development Policies 2010-2025

Local Development Framework



**If you would like this document in large print
or Braille, or in another language, please
contact 020 7974 5615**

Find out more about this document and the LDF by visiting camden.gov.uk/ldf
or by calling the LDF hotline 020 7974 5615/2043.

Forward Planning
London Borough of Camden
Town Hall Extension
Argyle Street
London WC1H 8EQ

Published November 2010.

Camden's Local Development Framework. Development Policies.



Section 2

Meeting Camden's needs

– Providing homes, jobs and facilities

- 2.1 The section on Meeting Camden's needs in Camden's Core Strategy provides our overall approach to making sure we provide the homes, jobs, facilities and infrastructure needed to support the growth in the number of people living in, working in and visiting the borough. This section of Camden Development Policies sets out our detailed planning policies to help to implement this part of the Core Strategy. It is divided into three parts:
- **Meeting our need for homes** – this provides policies that seek to maximise overall housing supply, provide affordable housing and prevent the loss of housing. It also covers providing homes of different sizes; lifetime and wheelchair homes; sheltered housing and care homes for older people; accommodation for homeless people and vulnerable people; hostels and other housing with shared facilities.
 - **Providing jobs and facilities** – this contains our policies on small and independent shops, markets, managing the impact of town centre uses, employment sites and premises, tourism and visitor accommodation, and community and leisure uses.
 - **Promoting sustainable and efficient transport** – this sets out our detailed policies on transport, in particular on the transport implications of development; walking, cycling and public transport; parking; the movement of goods; and development that connects to the highway network.



Meeting our need for homes

- 2.2 The Core Strategy seeks to manage growth so that it works positively for Camden. Core Strategy policy CS6 – *Providing quality homes* aims to:
- make full use of Camden’s capacity for housing, to meet or exceed targets for the supply of homes in the borough;
 - secure high quality affordable housing, by seeking an appropriate proportion of, and different types of, affordable homes; regenerating Camden’s housing estates; and bringing existing Council homes up to Decent Homes standard;
 - minimise social polarisation and secure mixed and inclusive communities, by securing a broad range of housing of different sizes and types to meet the needs of different groups and households in different circumstances.
- 2.3 This sub-section of Camden Development Policies sets out in more detail how we will make planning decisions to deliver the aims of policy CS6. However, housing schemes will also need to satisfy other relevant policies, particularly those concerned with the environment, quality of life, sustainability, climate change and transport. These policy concerns correspond well with the Building for Life criteria that form the national standard for well-designed homes and neighbourhoods.
- 2.4 Amenity, in terms of a house’s relationship with neighbouring properties and its internal space standards, is key aspect of housing quality. The Council will protect the amenity of Camden’s residents by making sure that the impact of developments on their occupiers and neighbours is fully considered, in accordance with development policy DP26 and Core Strategy policy CS5. Further information regarding factors that affect residential amenity is included in our Camden Planning Guidance supplementary planning document. In particular, Camden Planning Guidance contains our internal space standards for residential development. To provide high quality housing, proposals will need to address all aspects of residential amenity in accordance with relevant policies and Camden Planning Guidance.
- 2.5 The policies in this sub-section relate to the same forms of housing as Core Strategy policy CS6, namely:
- self-contained houses and flats (Use Class C3) (the predominant form);
 - live/work units, which are self-contained homes that include a dedicated work area (they are outside any planning use class, but we will treat them in the same way as Use Class C3 for the operation of our Local Development Framework policies);
 - bedsit rooms that share facilities such as toilets, bathrooms and kitchens (often known as houses in multiple occupation or HMOs, some with 3 to 6 occupiers fall within Use Class C4, but most are outside any planning use class);
 - hostels where shared accommodation is managed for a particular group of people (e.g. students) and occupiers may stay for several months (also outside any planning use class);
 - those nursing homes, care homes and parts of hospitals where people live permanently, such as nurses’ accommodation (parts of Use Class C2);
 - residential accommodation that is ancillary to another use, such as living areas for managers, caretakers and other staff.

DP2. Making full use of Camden’s capacity for housing

- 2.6 Core Strategy policy CS6 indicates that the Council seeks to maximise the supply of homes and minimise their loss, with housing regarded as the priority land-use of the Camden Local Development Framework. Key aspects of policy CS6 that inform our approach to maximising housing supply and minimising loss of homes in the case of an individual site include:
- the overall Camden target for supply of additional homes from 2010/11 to 2024/25;
 - the separate elements of the target for self-contained homes, homes that are not self-contained (such as hostels and grouped bedsit rooms) and vacant homes returning to use;
 - the overall expected delivery of additional homes based on Camden’s 15-year housing trajectory, which is significantly above the housing target for 2010/11 to 2024/25, but falls significantly short of the projected household growth rate up to 2026; and
 - the Council’s aim to give priority to households unable to access market housing and to vulnerable people in planning decisions relating to new homes.
- 2.7 Policy DP2 protects housing against development for a non-residential use. It relates to all forms of housing for long-term residents (see paragraph 2.5). The first part of the policy is concerned with making the best use of sites for additional homes, particularly homes for people who are unable to access general needs market housing. This part relates primarily to self-contained houses and flats (Use Class C3). The second part is concerned with the loss of housing floorspace in all forms; proposals to change permanent housing into short-stay accommodation; and with the loss of self-contained homes through proposals to combine them into larger dwellings. More detailed guidance is given in policies DP7, DP8 and DP9 with respect to the loss of sheltered housing and care homes for older people; loss of housing for vulnerable people and homeless people; and loss of student housing, bedsits, and other housing with shared facilities. Through policy DP4, the Council seeks to protect existing affordable housing, whether or not it is self contained.



DP POLICY

DP2 – Making full use of Camden’s capacity for housing

The Council will seek to maximise the supply of additional homes in the borough, especially homes for people unable to access market housing, by:

- a) expecting the maximum appropriate contribution to supply of housing on sites that are underused or vacant, taking into account any other uses that are needed on the site;
- b) resisting alternative development of sites considered particularly suitable for housing; and
- c) resisting alternative development of sites or parts of sites considered particularly suitable for affordable housing, homes for older people or homes for vulnerable people.

The Council will seek to minimise the loss of housing in the borough by:

- d) protecting residential uses from development that would involve a net loss of residential floorspace, including any residential floorspace provided:
 - within hostels or other housing with shared facilities; or
 - as an ancillary element of another use, wherever the development involves changing the main use or separating the housing floorspace from the main use.

- e) protecting permanent housing from conversion to short-stay accommodation intended for occupation for periods of less than 90 days;
- f) resisting developments that would involve the net loss of two or more homes, unless they:
 - create large homes in a part of the borough with a relatively low proportion of large dwellings,
 - enable sub-standard units to be enlarged to meet residential space standards, or
 - enable existing affordable homes to be adapted to provide the affordable dwelling-sizes that are most needed.

As an exception to the general protection of residential floorspace, where no alternative site is available, the Council will favourably consider development that necessitates a limited loss of residential floorspace in order to provide small-scale healthcare practices meeting local needs.





Maximising the supply of additional homes

- 2.8 Housing is regarded as the priority land-use of the Local Development Framework, and the Council will make housing its top priority when considering the future of unused and underused land and buildings (see Core Strategy policy CS6). However, this priority does not override, but will be considered alongside, the need to protect some non-residential uses; to promote the national and international roles of Central London; and the need for development to respect the characteristics of the area and the site or property. Taking these considerations into account, a mix of uses or an alternative use will be appropriate for some sites. Where a mixed-use scheme including housing would be appropriate, the Council will seek to maximise the contribution to the supply of housing within the mix, taking into account policy DP1 and the criteria set out in paragraph 2.12.
- 2.9 High development densities are one way of making the maximum use of a site (in the context of housing, this means more homes or rooms in a given area). In accordance with policy CS1 of the Camden Core Strategy, the Council will expect the density of housing development to take account of the density matrix in the London Plan (Table 3A.2), and to be towards the higher end of the appropriate density range. However, the appropriate density will also depend on accessibility, the character and built form of the surroundings, and protecting the amenity of occupiers and neighbours. Given that the majority of the borough has relatively high public transport accessibility and is suitable for development of flats, densities should generally fall within the cells towards the right and bottom of the matrix, i.e. 45 to 405 dwellings per hectare.
- 2.10 There is a significant market in Camden for very large homes that have many more rooms than occupiers. The London Plan density matrix assumes that the number of habitable rooms per dwelling will average between 2.7 and 4.6. Developments including dwellings with significantly more habitable rooms may give inconsistent results against the density matrix, showing an appropriate density in terms of habitable rooms, but an inappropriately low density in terms of dwellings. In the interests of mixed and inclusive communities, the Council seeks a range of dwelling sizes, and does not favour concentrations of very large homes. Therefore, when using the London Plan density matrix, the Council will refer primarily to dwelling densities, measured in units per hectare.



- 2.11 Where possible, we have identified underused sites that are suitable for additional housing in our Site Allocations Local Development Framework document, and will resist an alternative use of allocated sites. However, a high proportion of the housing developments that come forward in Camden are not identified in advance because they are small sites, or were in use when sites were assessed for allocation. Given the high proportion of potential housing sites in the borough that cannot be identified in the Sites Allocations document, the Council may also resist non-housing development on other sites that:
- have a valid consent for housing; or
 - are suitable for housing in terms accessibility and amenity, and are free of physical and environmental constraints that would prevent residential use.
- 2.12 In seeking to maximise the proportion of a site used for housing and deciding whether to resist a non-housing development, the Council will take into account:
- the need and potential to re-provide on site existing uses protected by other policies, such as industry, warehousing, community uses and shops;
 - other uses that are needed in the area, particularly in Central London, and the extent to which alternative sites or provision is available;
 - policy DP1, and whether a mixed-use development would be appropriate;
 - whether the supply of additional housing falls short of the overall target of 595 additional homes per year and the target of 437 additional self-contained homes per year; and
 - the financial viability of the proposal and the financial viability of housing development.
- 2.13 The Council will generally treat live/work units in the same way as housing for the operation of development policies. Such premises contribute to the range of homes and the range of business premises in the borough, and the Council will not resist the development of live – work premises on sites that are considered suitable for housing, subject to the inclusion of an appropriate mix of dwelling-sizes and types (in accordance with other policies including DP3, DP5 and DP6). Further information on our approach to live-work premises is provided by policy DP13 and accompanying paragraphs.

Sites particularly suitable for affordable housing and housing for vulnerable people

- 2.14 The capital return and rental income of developments that provides affordable housing, housing for older people or housing for vulnerable people is limited. Therefore there is a danger that other more profitable forms of housing, such as student housing, will take-up potential sites and limit the supply of affordable housing and homes for vulnerable people.
- 2.15 As far as possible, the suitability of housing sites for affordable housing is identified in our Camden Site Allocations Local Development Framework document. However, a high proportion of the affordable housing provided in the borough is on sites that that have not been identified in advance. Where a site has been allocated for affordable housing or a proportion of affordable housing, or has a valid consent for a development including affordable housing, the Council will resist development that fails to include appropriate affordable housing provision. The appropriateness of an affordable

housing contribution will be considered in terms of the criteria set out in policy DP3, including the financial viability of the development. The Council will also resist the loss of any existing affordable housing, as set out in policy DP4.

- 2.16 Most additional housing for older people and vulnerable people is likely to be delivered by independent providers such as registered social landlords or charities. Where a site has been allocated to provide housing for older people or vulnerable people, the Council will resist housing development that fails to include these uses. The Council will also resist the loss of any existing housing for older people or for vulnerable people, as set out in policies DP7 and DP8.

Loss of residential floorspace

- 2.17 As set out in Core Strategy section CS6 and paragraph 2.6 above, the expected delivery of additional homes from 2010/11 to 2024/25 falls significantly short of the projected growth in the number of households up to 2026. Any loss of residential floorspace that could potentially house an individual or household would worsen this shortfall, and will be therefore be resisted by the Council. As noted in paragraph 2.5, housing takes a wide variety of forms capable of providing permanent residential accommodation. Policy DP2 relates to all of these forms, (although more detailed guidance is given in policies DP4, DP7, DP8 and DP9 on loss of affordable housing, sheltered housing and care homes for older people, accommodation for homeless people and vulnerable people, student housing, bedsits and other housing with shared facilities).
- 2.18 In some cases, residential accommodation is ancillary to another use, such as a caretaker's flat at a school, a staff flat above a shop or pub, or a nurses' home at a hospital. Alterations between the proportion of floorspace in the main use and the ancillary use will generally be outside planning control. However, where the development involves changing the main use or separating the housing floorspace from the main use, it will generally be subject to planning control, and we will seek to protect the residential floorspace.
- 2.19 In some circumstances, it may be appropriate for residential floorspace to be re-provided on an alternative site. We will have regard to policy DP1 (mixed-use development) when considering whether housing should be retained on-site or re-provided off-site. For the purposes of policy DP2, the Council will regard losses of residential floorspace as material if they reduce the number of people who can occupy a home or property. For the purposes of applying policy DP2 to hospitals and care homes (within Use Class C2), protection will apply only to the floorspace previously in permanent residential use, including staff housing, dormitories, permanent accommodation for people needing residential care, and any communal or circulation space associated with these. Additional guidance on protection of key-worker affordable housing for healthcare staff is included in Policy DP4.

Conversion to short-stay accommodation

- 2.20 There is a demand for short term and temporary accommodation in the borough, primarily to provide for visitors. This accommodation falls outside the Council's land-use priority for housing, and new demand should be met from appropriate sites in non-residential use, rather than sites used for permanent housing. In London, a switch from permanent housing to properties let for less than 90 days is considered to be a material change of use (under the amended Greater London Council (General Powers) Act 1973). The Council will resist development that changes permanent housing into such accommodation. Proposals to provide short-term accommodation for vulnerable people (such as people at risk from domestic violence) will be assessed in accordance with policy DP8.
- 2.21 Proposals for new short-term and temporary accommodation will be considered taking into account policies that seek to protect existing uses. Where a proposal involves accommodation for short-term visitors to Camden, the Council will take into account policy DP14 relating to tourism development and visitor accommodation.

Net loss of two or more homes

- 2.22 The expected shortfall in the delivery of homes up to 2024/25 is potentially worsened by the loss of dwellings in small schemes for housing conversion and redevelopment. In each of the 5 years

up to 2007/08, planning permission was granted for the loss of more than 80 dwellings in small conversion and redevelopment schemes, which, when implemented, will add to Camden's (net) annual target of 595 additional homes per year. As a result, there is considered to be little scope for the loss of existing homes in the borough, even where this does not involve loss of floorspace. Where development involves the demolition or other loss of homes, the Council will generally expect it to provide a similar or greater number of replacement dwellings, to an equivalent or better standard than the homes removed.

- 2.23 The majority of permissions granted for the loss of homes involved schemes to combine 2 or more homes into a single large dwelling. Within the affordable housing stock, these changes are justified by the severe problems of overcrowding and the high proportion of existing one-bed dwellings. However, there is no comparable mismatch across the borough's market sector, and typical layouts suggest that merger of existing market homes is largely geared to a demand for high value housing rather than the creation of additional bedrooms for large families. Therefore, schemes that would create a loss of more than one residential property will generally be resisted. The Council does not seek to resist schemes combining dwellings that involve the loss of a single home.
- 2.24 The nature of the stock of market housing varies across the borough, and some areas have a much higher proportion of large dwellings than others. A mix of large and small units in an area can help to create more balanced communities (as different size dwellings meet the housing needs of different parts of the community) and increase housing choice. To achieve a more varied mix of housing, the Council will favourably consider proposals that create large homes out of smaller homes in parts of the borough where there is a relatively low proportion of large dwellings (that is, the wards of Bloomsbury, Holborn and Covent Garden, King's Cross, Kilburn, Regent's Park and St Pancras and Somers Town).
- 2.25 Some housing in the borough does not conform to current residential space standards. These are usually homes that were built before the standards were introduced or without the benefit of planning consent. Where existing homes fall substantially below the residential space standards set out in our Camden Planning Guidance supplementary document, the Council may consider proposals involving the loss dwellings in order to meet the standards. We will consider proposals favourably if existing homes are 20% or more below the space standards and the loss of dwellings is no greater than is necessary to meet the standard.
- 2.26 There is a particular shortage of affordable homes for large families in the borough (see Core Strategy section CS6 and policy DP5 below). Opportunities to reduce this shortage and reduce overcrowding could arise by reconfiguring or redeveloping existing housing, especially the stock of Council housing, which contains a disproportionate number of one-bedroom dwellings. The Council will favourably consider proposals that create large affordable housing for families by combining or redeveloping smaller affordable dwellings provided that there is no overall loss of residential floorspace.

Small-scale healthcare practices

- 2.27 Small-scale healthcare practices (such clinics for osteopathy and physiotherapy) may appropriately be provided in residential areas to ensure they are easily accessible to the people that need them, sometimes in association with the homes of the practitioners. The Council may support the loss of residential floorspace to provide these and similar small-scale healthcare facilities provided that the loss will not exceed one dwelling; no alternative non-residential premises are available nearby; and the proposal will meet needs in a local catchment. If there is no longer a need for these healthcare practices, the Council will expect the floorspace to return to residential use.

Key evidence and references

- Camden Housing Needs Study Update 2008
- The London Plan (consolidated with Alterations since 2004); Mayor of London; 2008
- Planning Policy Statement (PPS) 3 – Housing

DP5. Homes of different sizes

- 5.1 Core Strategy policy CS6 seeks to secure mixed and inclusive communities and a range of self-contained homes of different sizes. Our approach is informed by:
- the over-representation of small dwellings among Camden’s existing homes;
 - existing and projected household sizes in the borough;
 - the Council’s identified dwelling size priorities;
 - the need for a range of homes accessible across the spectrum of incomes; and
 - the housing needs of different groups.

Policy DP5 helps to implement this element of policy CS6 by setting out more detail on our approach to providing homes of different sizes.

- 5.2 Policy DP5 relates primarily to developments of self-contained houses and flats for general needs (Use Class C3). It will be used when assessing new build housing schemes, schemes to reconfigure or subdivide residential properties and to all changes of use to housing (in Use Class C3) from other uses. It will also be used when assessing development that creates self-contained homes from residential accommodation that is ancillary to another use. Policy DP5 will be applied to proposals for bedsits or other permanent housing with shared facilities if the development could be occupied lawfully as self-contained dwellings in Use Class C3 without submission of a further planning application (please see paragraphs 9.2 to 9.3 for more details).
- 5.3 Policy DP5 does not relate to developments that provide homes exclusively for older people, homeless people, vulnerable people or students (these are covered by policies DP7, DP8 and DP9). In such developments, the appropriateness of the proposed mix of dwelling sizes will be assessed in terms of the needs of the intended occupiers. However, all housing developments should contribute to the creation of mixed and inclusive communities. Therefore, it will often be appropriate for these dedicated housing types to be integrated into larger schemes that include general needs housing.

DP POLICY

DP5 – Homes of different sizes

The Council will contribute to the creation of mixed and inclusive communities by securing a range of self-contained homes of different sizes. We will:

- a) seek to ensure that all residential development contributes to meeting the priorities set out in the Dwelling Size Priorities Table, including conversion of existing residential and non-residential floorspace;
- b) expect a mix of large and small homes in all residential developments.

In considering the mix of dwelling sizes appropriate to a development, the Council will have regard to the different dwelling size priorities for social rented, intermediate affordable and market homes, and will take into account:

- c) the character of the development, the site and the area, including the impact of the mix on child density;
- d) site size, and any constraints on including homes of different sizes; and
- e) the economics and financial viability of the site, including the demand for homes of different sizes.

- 5.4 The Council has identified different dwelling size priorities for social rented housing, intermediate affordable housing and market housing on the basis of the factors noted in paragraph 5.1. These priorities are set out in Core Strategy paragraph 6.39, and also set out in the Dwelling Size Priorities Table below, with dwelling sizes expressed in terms of number of bedrooms. The Council's particular aims for the size of each of these housing types form the final column of the table, and also provide the basis for monitoring policy DP5. When assessing a proposal against policy DP5, the Council will consider small homes to be studio flats, one bedroom and two-bedroom homes (the need for self-contained studio flats has not been assessed separately from the need for 1-bedroom homes). The Council will consider large homes to be homes with 3-bedrooms or more.

Dwelling Size Priorities Table					
	1-bedroom (or studio)	2-bedrooms	3-bedrooms	4-bedrooms or more	Aim
Social rented	lower	medium	high	very high	50% large
Intermediate affordable	medium	high	high	high	10% large
Market	lower	very high	medium	medium	40% 2-bed

- 5.5 The Council acknowledges that there is a need and/ or demand for dwellings of every size shown in the Priorities Table. We expect most developments to include some homes that have not been given a priority level, and some homes that are identified as medium priority. However, the Council has prioritised some sizes as high or very high priority (primarily on the basis of a high level of need relative to supply). We will expect proposals to include some dwellings that meet the very high priorities wherever it is practicable to do so. We will seek to focus provision around the very high and high priority sizes by assessing dwelling mixes against the aims in the Priorities Table. The Council will aim for at least 50% of social rented dwellings and 10% of intermediate affordable dwellings in each scheme to be large homes with 3-bedrooms or more, and for at least 40% of market homes to contain 2-bedrooms (in each case, proportions will be calculated in terms of numbers of dwellings rather than floorspace).
- 5.6 Having regard to criteria (c), (d) and (e) in policy DP5, the Council acknowledges that it will not be appropriate for every development to meet the aims set out in the Priorities Table. However, we consider that each development should contribute to the creation of mixed and inclusive communities by containing a mix of large and small homes overall, in accordance with criterion (b). Where possible a mix of large and small homes should be included within each category of housing provided (social rented, intermediate affordable and market). This will help ensure that each development provides some dwelling sizes that are high priorities and some that are not. The Council will resist development proposals for self-contained general needs housing that contain only one-bedroom and studio flats.
- 5.7 The Council will be flexible when assessing development against policy DP5, the dwelling size priority table, and the aims set out in paragraph 5.5. The mix of dwelling sizes appropriate in a specific development will be considered taking into account the character of the development, the site and the area. The following paragraphs set out a number of the relevant considerations.

Character of the development, the site and the area, and child density

- 5.8 Where a development involves re-use of an existing building, this may limit the potential to provide a range of dwelling sizes. Issues that can arise include the creation of access via an existing staircase or lift; respect for the integrity of existing structural walls and patterns of windows; changes in floor level; and heritage designations (listed building and conservation area status) that



may restrict alterations. The Council will have regard to these issues, alongside the expectations arising from development size, and other issues considered below.

- 5.9 Where a development is for the conversion of existing homes (including the creation of self-contained homes from residential accommodation that is ancillary to another use), the Council will seek to minimise the loss of dwelling sizes that are given a priority of medium or above in the dwelling size priorities table. In particular, conversions involving affordable housing should retain or re-provide any existing large affordable homes unless the creation of small homes will allow the release of other large affordable homes that are currently under-occupied. Conversion of market housing should also generally retain or re-provide existing 2-bedroom homes and should also include large homes. Conversions that involve the loss of existing homes should also comply with policy DP2.
- 5.10 When considering the proportion of large homes appropriate within a specific development, we will take account of any features that make the development particularly suitable for families with children. We will also take into account the flexibility that larger dwellings create for other types of households, allowing for arrangements such as shared households and adults caring for elderly or infirm relatives. Developments are particularly suitable for children to live in if they have:
- the potential to provide space on site where children can play (open space or private amenity space);
 - dedicated children's play space available nearby;
 - a number of homes with direct access to the street, private amenity space or open space;
 - no direct access to a major road;
 - a limited number of homes served from each internal corridor and each communal staircase or lift;
 - potential to provide a broad range of dwelling sizes in the development appropriate for new families with very young children and established families with older children.
- 5.11 Where some or all of the features listed in paragraph 5.10 are present, the Council will expect provision of a high proportion of large affordable homes, and expect inclusion of social-rented homes with 4-bedrooms or more (subject to policy DP3 on affordable housing). However, there are relatively few opportunities in Camden for housing development that will provide most of these features. Other ground floor uses often prevent direct access to the street, there are many major roads in the borough, and the cost of lifts is too high to share among a small number of homes. However, the Council does not consider that the absence of any or all of these features justifies the omission of large homes from a development. Developments should be arranged to provide access as directly as possible from large homes to the street entrance, external amenity space or open space. To provide for the minority ethnic mix in Camden, a proportion of large homes should have kitchens and food preparation areas that are physically separated from living areas. Please see our Camden Planning Guidance supplementary planning document for further details.

- 5.12 Child density is a measure of the number of children occupying a specific development or area. High child densities tend to arise where there is a high proportion of large affordable homes in a development, especially when these are social rented. In some circumstances, high child densities are associated with problems such as the use of communal areas as informal playgrounds, noise disturbance, graffiti and vandalism. When considering the proportion of large homes appropriate within a particular development, we will have regard to the child density in the surrounding area and the child density likely to arise in the development. We will also take account of the potential to use a management mechanism to control child densities, such as a sensitive lettings policy (these generally prevent all homes being occupied to their maximum capacity when they are first let).
- 5.13 A number of elements of good design are particularly relevant to considering the mix of dwelling sizes appropriate to a specific development proposal. The mix selected should achieve efficient layouts, in terms of the ratio of internal dwelling space to communal circulation space, and in terms of the proportion of the internal dwelling space that is usable. Where schemes include a number of floors, homes should be arranged to minimise noise disturbance, avoiding situations where bathrooms, living rooms and kitchens are directly above or below bedrooms. Homes where all windows face a single direction should also be avoided, especially in the case of large homes.

Development economics, financial viability, and demand

- 5.14 As set out in paragraphs 6.56 and 6.57 under Camden Core Strategy section CS6, the Council intends to be flexible in pursuit of its policy objectives, and will take into account the findings of our monitoring of housing supply in the light of economic circumstances. These paragraphs note specifically that the Council may vary the range of home sizes sought in order to maximise housing delivery.
- 5.15 At some times, and in some parts of the borough, the demand for large market homes may be higher than the demand for small ones, and vice versa. Market homes of some sizes can therefore generate a premium in terms of their value per square metre. The value of affordable housing may also vary depending on its size. Large affordable homes may have a lower value per square metre than small ones if grant from the Homes and Communities Agency or rental payments by the occupiers do not reflect the higher costs of providing them. The Council recognises that the rigid application of dwelling size priorities can prejudice the financial viability of a development in these cases, and will consider the appropriate mix of dwellings having regard to their value and the potential to maximise the proportion of affordable housing on the site.
- 5.16 The Council also recognises market housing and intermediate affordable housing will often be too expensive for many households who need large homes. Average house prices in Camden were well over twice the national average in 2007 (Camden Housing Needs Survey Update 2008). The affordability issues affecting large market and intermediate affordable homes have been considered in setting our dwelling size priorities, but will they will also be taken into account when considering the mix of homes appropriate for individual schemes.





- 5.17 Affordability and funding concerns may sometimes be resolved by adapting the tenure of intermediate or market housing (subject to the limits on Council control over tenure). In the intermediate sector, large homes for shared-ownership may be more appropriate where property values are relatively low, and large homes for rent may be more appropriate where development costs are relatively high. In the market sector, 3-bedroom homes may be accessible to a wider range of households if they are made available to rent. The Council will take account of affordability, funding concerns, and the impact of different tenures when seeking its priority dwelling sizes in particular schemes.
- 5.18 More detailed guidance on the preferred affordable housing mix is contained in our Camden Planning Guidance supplementary planning document. The Council produces residential space standards that indicate the amount of internal space appropriate for dwellings intended to accommodate different numbers of occupiers. These are also set out in Camden Planning Guidance.

Key evidence and references

- Camden Housing Needs Study Update 2008
- Greater London Strategic Housing Market Assessment 2008
- The London Plan (consolidated with Alterations since 2004); Mayor of London; 2008
- Planning Policy Statement (PPS) 3 – Housing

DP6. Lifetime homes and wheelchair housing

- 6.1 Core Strategy policy CS6 indicates that Council will seek a variety of housing types suitable for people with mobility difficulties. Policy DP6 helps to deliver this by setting out our approach to lifetime homes and wheelchair housing.
- 6.2 Although mobility difficulties should be considered in the design of all forms of housing, the standards for lifetime homes and wheelchair accessibility relate primarily to the layout of self-contained homes. As occupants of student housing will only stay for a limited period, student housing is not expected to meet lifetime homes standards. The proportion of students who are wheelchair users should reflect the general population, therefore the Council expects 10% of student flats or study-bedrooms (together with supporting communal spaces) to meet wheelchair standards.

DP POLICY

DP6 – Lifetime homes and wheelchair housing

All housing development should meet lifetime homes standards. 10% of homes developed should either meet wheelchair housing standards, or be easily adapted to meet them.

- 6.3 The Council considers that people with mobility difficulties, including disabled people, should have access to a range of housing types that match the range available to those without mobility constraints. Mobility difficulties can affect children, young people, adults and older people. They can affect people who live in large families, small households and people living alone. Where people have support needs related entirely to a physical disability, the Council will seek to provide them with support in their own home.
- 6.4 A lifetime home supports the changing needs of a family's lifecycle, from raising children through to mobility issues in old age, essentially allowing people to live in their home for as much of their life as possible. Lifetime homes involve design features that have been tailored to foster accessible living, helping to accommodate old age, injury, disability, pregnancy and pushchairs. These features also allow a dwelling to be easily adapted for even higher levels of accessibility in the future, if the need arises. Lifetime homes exceed the requirements of Part M of the Building Regulations.
- 6.5 Lifetime homes standards will be applied to all developments of self-contained housing, including conversions, reconfigurations and changes of use (the standards do not apply to student housing). The standards will also be applied to proposals for bedsits or other permanent housing with shared facilities if the development could be occupied lawfully as self-contained dwellings in Use Class C3 without submission of a further planning application (please see paragraphs 9.2 to 9.3 for more details). The Council acknowledges that the design or nature of some existing properties means that it will not be possible to meet every element of the lifetime homes standard, for example in listed buildings, but considers that each scheme should achieve as many features as possible. All housing proposals should be accompanied by a submission showing how each of the lifetime homes standards will be met, with a full justification why any individual element will not be met. New build schemes are expected to incorporate all lifetime homes features. Further information on lifetime homes can be found in our Camden Planning Guidance supplementary planning document.
- 6.6 To provide independence and quality of life for wheelchair users, the Council will expect 10% of dwellings either to meet wheelchair housing standards, or be designed so a future occupier can easily adapt the dwelling to meet wheelchair housing standards. The percentage will be applied to all developments providing 10 or more self-contained homes, including conversions, reconfigurations and changes of use, and will also be applied to student housing. The percentage



will also be applied to proposals for bedsits or other permanent housing with shared facilities if the development could be lawfully occupied as 10 or more self-contained dwellings in Use Class C3 without submission of a further planning application (please see paragraphs 9.2 to 9.3 for more details). However, where proposals involve re-use of an existing building (particularly a listed building), the percentage will be applied flexibly taking into account of any constraints that limit adaptation to provide entrances and circulation spaces that are level and wide enough for a wheelchair user.

- 6.7 Ideally, wheelchair housing should be tailored to the specific needs of an individual wheelchair user and their household. Although tailoring housing to the occupier is rarely possible in proposals for speculative market housing, it can be achieved for affordable housing, where future occupiers can be identified by local housing managers, from the Housing Register (waiting list), and from transfer lists.
- 6.8 The Council will apply the wheelchair housing percentage across each affordability category in a scheme, generally seeking 10% of market housing, 10% of social housing and 10% of intermediate housing. For the 10% of market housing, future occupiers will often be unknown until after the homes have been fitted out. Where the 10% market housing is not fully fitted-out to meet the standards, it should be laid out to provide all the necessary circulation space within and between rooms, including bathrooms and toilets, as subsequent changes to these arrangements can be costly and difficult.
- 6.9 For social rented housing and intermediate housing, each type should include 10% of homes designed, built and fitted-out to meet wheelchair housing standards. The Council may use its affordable housing fund to support the creation of fully-fitted out affordable wheelchair accessible housing. We may seek to increase the percentage of affordable wheelchair accessible homes and reduce the percentage of market wheelchair accessible homes where this will enable us to meet the needs of identified future affordable housing occupiers. We may also agree to increase the percentage of social rented wheelchair homes and reduce the percentage of intermediate affordable wheelchair homes (or vice versa) where this will better enable us to meet the needs of identified future occupiers. More detailed information is included in our Camden Planning Guidance supplementary development document.

Key evidence and references

- Camden Housing Needs Study Update 2008
- The London Plan (consolidated with Alterations since 2004); Mayor of London; 2008
- Accessible London: achieving an inclusive environment – London Plan Supplementary Planning Guidance; Mayor of London; 2004

DP25. Conserving Camden’s heritage

- 25.1 Camden has inherited a rich architectural heritage with many special places and buildings from many different eras in the area’s history, from the historic villages of Hampstead and Highgate to Georgian squares and John Nash’s Regent’s Park terraces, from the Victorian engineering of St Pancras Station to iconic modern structures such as Centrepoint. These places and buildings add to the quality of our lives by giving a sense of local distinctiveness, identity and history. 39 areas, covering much of the borough, are designated as conservation areas, recognising their special architectural or historic interest and their character and appearance. Also, thousands of buildings in Camden are nationally listed for their special historical or architectural interest (see map 3). We have a responsibility to preserve and, where possible, enhance these areas and buildings. This policy helps to implement Core Strategy policy CS14 – *Promoting high quality places and conserving our heritage*.

DP POLICY

DP25 – Conserving Camden’s heritage

Conservation areas

In order to maintain the character of Camden’s conservation areas, the Council will:

- a) take account of conservation area statements, appraisals and management plans when assessing applications within conservation areas;
- b) only permit development within conservation areas that preserves and enhances the character and appearance of the area;
- c) prevent the total or substantial demolition of an unlisted building that makes a positive contribution to the character or appearance of a conservation area where this harms the character or appearance of the conservation area, unless exceptional circumstances are shown that outweigh the case for retention;
- d) not permit development outside of a conservation area that causes harm to the character and appearance of that conservation area; and
- e) preserve trees and garden spaces which contribute to the character of a conservation area and which provide a setting for Camden’s architectural heritage.

Listed buildings

To preserve or enhance the borough’s listed buildings, the Council will:

- e) prevent the total or substantial demolition of a listed building unless exceptional circumstances are shown that outweigh the case for retention;
- f) only grant consent for a change of use or alterations and extensions to a listed building where it considers this would not cause harm to the special interest of the building; and
- g) not permit development that it considers would cause harm to the setting of a listed building.

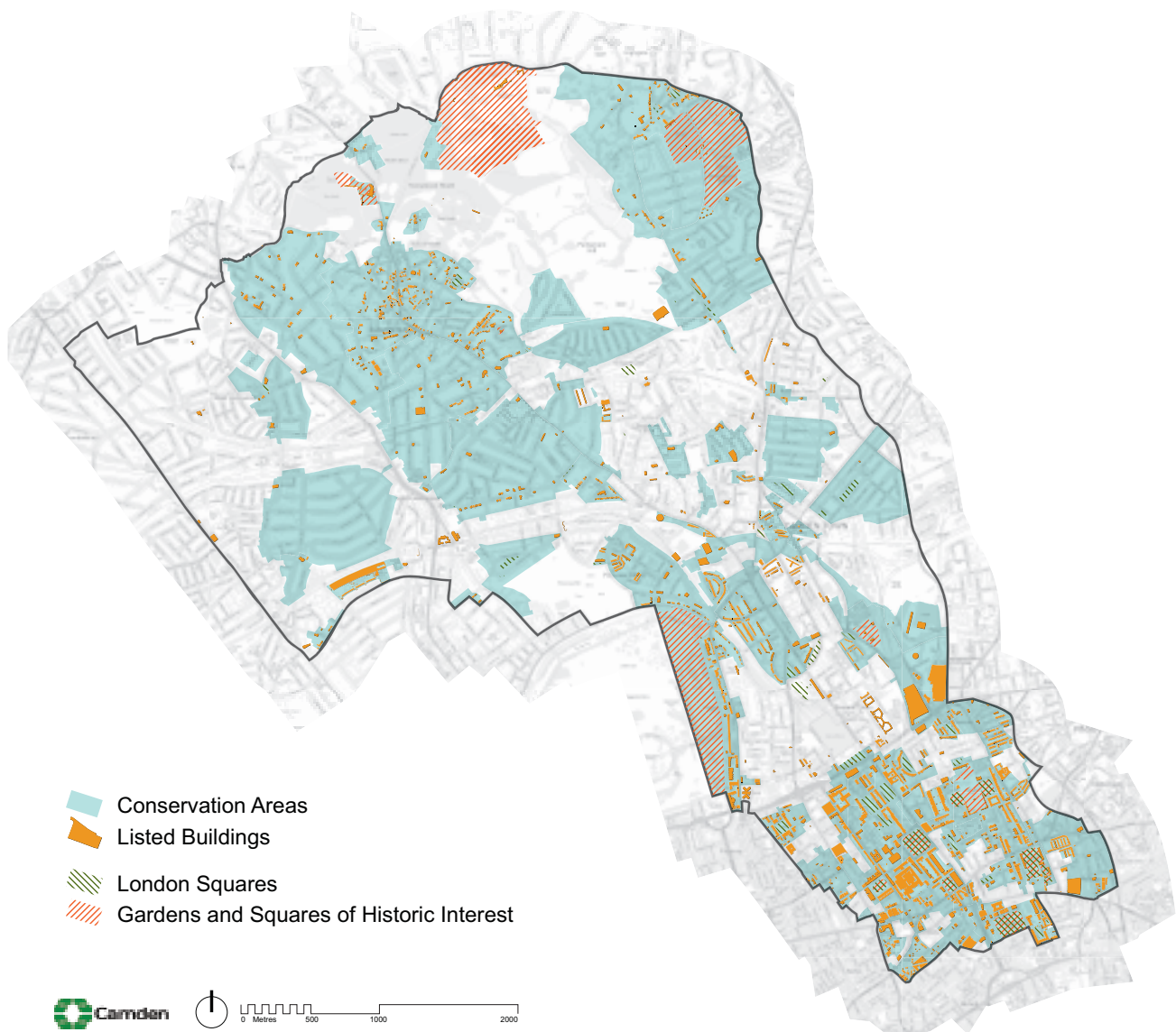
Archaeology

The Council will protect remains of archaeological importance by ensuring acceptable measures are taken to preserve them and their setting, including physical preservation, where appropriate.

Other heritage assets

The Council will seek to protect other heritage assets including Parks and Gardens of Special Historic Interest and London Squares.

Map 3: Heritage



This map is based on Ordnance Survey Material with the permission of Ordnance Survey on behalf of the Controller of Her Majesty's Stationery Office ©. Unauthorised reproduction infringes Crown copyright and may lead to prosecution or civil proceedings. Licence number LA100019726, year 2010.

Conservation Areas

- 25.2 In order to preserve and enhance important elements of local character, we need to recognise and understand the factors that create this character. The Council has prepared a series of conservation area statements, appraisals and management plans that assess and analyse the character and appearance of each of our conservation areas and set out how we consider they can be preserved and enhanced. We will take these into account when assessing planning applications for development in conservation areas. We will seek to manage change in a way that retains the distinctive characters of our conservation areas and will expect new development to contribute positively to this. The Council will therefore only grant planning permission for development in Camden's conservation areas that preserves and enhances the special character or appearance of the area. The character of conservation areas derive from the combination of a number of factors, including scale, density, pattern of development, landscape, topography, open space, materials, architectural detailing, and uses. These elements should be identified and responded to in the design of new development. Design and Access Statements should include an assessment of local context and character, and set out how the development has been informed by it and responds to it.

- 25.3 The character and appearance of a conservation area can be eroded through the loss of traditional architectural details such as historic windows and doors, characteristic rooftops, garden settings and boundary treatments. Where alterations are proposed they should be undertaken in a material of a similar appearance to the existing. Traditional features should be retained or reinstated where they have been lost, using examples on neighbouring houses and streets to inform the restoration. The Council will consider the introduction of Article 4 Directions to remove permitted development rights for the removal or alterations of traditional details where the character and appearance of a conservation area is considered to be under threat.
- 25.4 Historic buildings in conservation areas can be sensitively adapted to meet the needs of climate change and energy saving – preserving their special interest and ensuring their long term survival. For detailed advice on energy saving in historic buildings and conservation areas visit the English Heritage website and our Camden Planning Guidance supplementary document. Changes in patterns of use can also erode the character of an area. It is therefore important that, whenever possible, uses which contribute to the character of a conservation area are not displaced by redevelopment.
- 25.5 The value of existing gardens, trees and landscaping to the character of the borough is described in DP24 – Securing High Quality Design, and they make a particular contribution to conservation areas. Development will not be permitted which causes the loss of trees and/or garden space where this is important to the character and appearance of a conservation area. DP27 – Basements and lightwells provides further guidance on this issue where landscaping may be affected by basements and other underground structures.
- 25.6 The Council has a general presumption in favour of retaining buildings that make a positive contribution to the character or appearance of a conservation area, whether they are listed or not so as to preserve the character and appearance of the conservation area. We will not grant conservation area consent for the total or substantial demolition of such a building where this would harm the appearance of the conservation area, unless exceptional circumstances are shown that outweigh the case for retention. Applicants will be required to justify the demolition of a building that makes a positive contribution to a conservation area, having regard to Policy HE7 of Planning Policy Statement (PPS) 5: Planning for the Historic Environment, Camden’s conservation area statements, appraisals and management plans and any other relevant supplementary guidance produced by the Council.

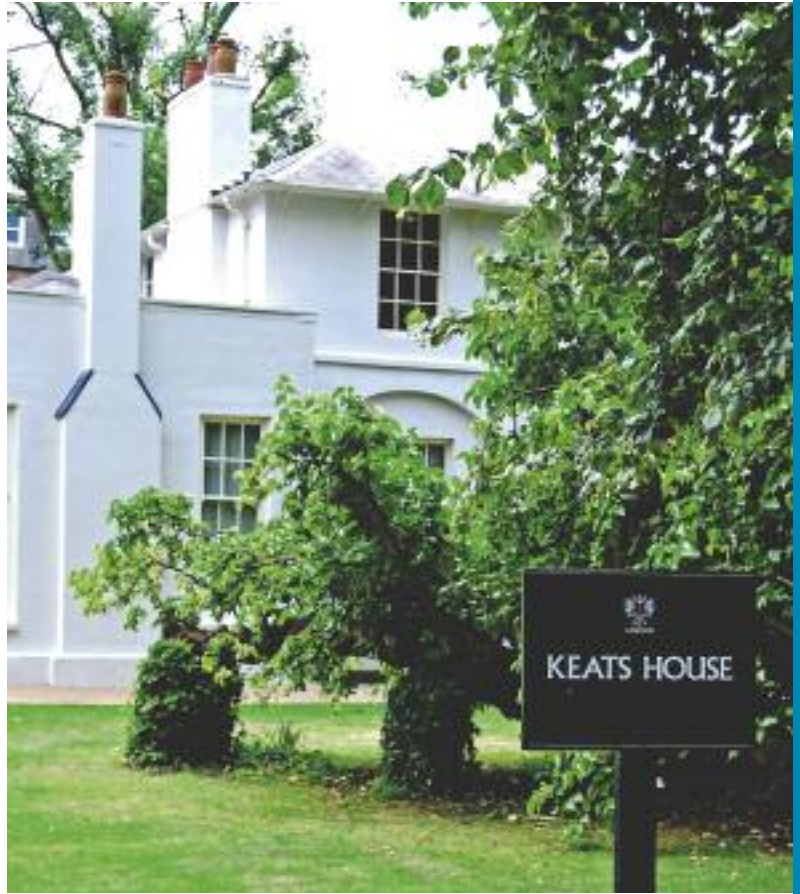


- 25.7 When considering applications for demolition, the Council will take account of group value, context and setting of buildings, as well as their quality as individual structures and any contribution to the setting of listed buildings. Applications must clearly show which buildings or parts of buildings are to be demolished.
- 25.8 Applications for total or substantial demolition in conservation areas must demonstrate to the Council's satisfaction that effective measures will be taken during demolition and building works to ensure structural stability of retained parts and adjoining structures. Before conservation area consent for demolition is granted, the Council must be satisfied that there are acceptable detailed plans for the redevelopment. Any replacement building should enhance the conservation area to an appreciably greater extent than the existing building. When a building makes little or no contribution to the character and appearance of a conservation area, any replacement building should enhance the conservation area to an appreciably greater extent than the existing building.
- 25.9 Due to the largely dense urban nature of Camden, the character or appearance of our conservation areas can also be affected by development which is outside of conservation areas, but visible from within them. This includes high or bulky buildings, which can have an impact on areas some distance away, as well as adjacent premises. The Council will therefore not permit development in locations outside conservation areas that it considers would cause harm to the character, appearance or setting of such an area.
- 25.10 Our Camden Planning Guidance supplementary document provides further information on our approach to conservation areas.

Listed buildings

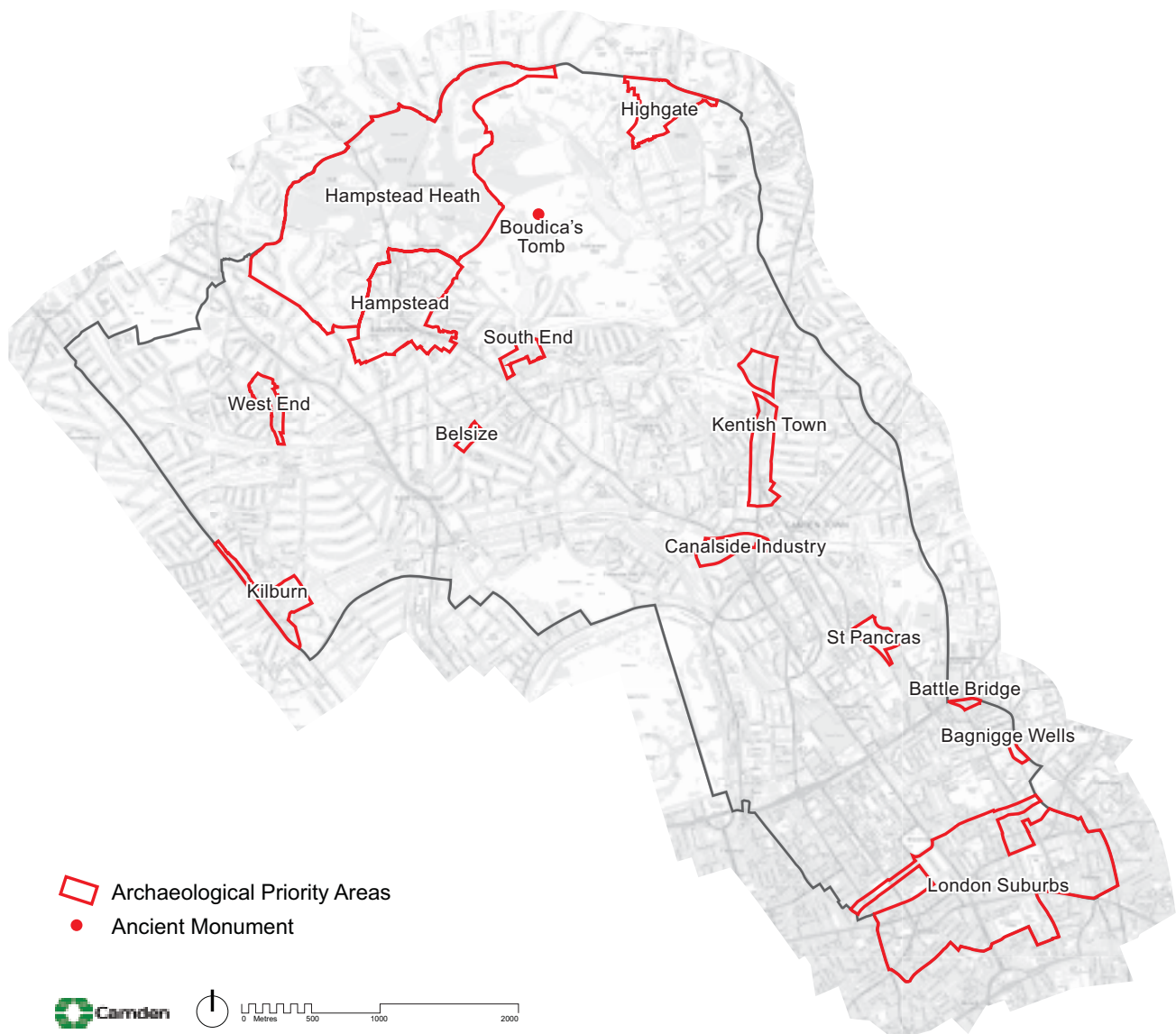
- 25.11 Camden's listed buildings and structures provide a rich and unique historic and architectural legacy. They make an important and valued contribution to the appearance of the borough and provide places to live and work in, well known visitor attractions, and cherished local landmarks. We have a duty to preserve and maintain these for present and future generations. There are over 5,600 buildings and structures in Camden that are on the statutory list for their special architectural or historic interest.
- 25.12 The Council has a general presumption in favour of the preservation of listed buildings. Total demolition, substantial demolition and rebuilding behind the façade of a listed building will not normally be considered acceptable. The matters which will be taken into consideration in an application for the total or substantial demolition of a listed building are those set out in Policy HE7 of PPS5.





- 25.13 In order to protect listed buildings, the Council will control external and internal works that affect their special architectural or historic interest. Consent is required for any alterations, including some repairs, which would affect the special interest of a listed building. The matters which will be taken into consideration in an application for alterations and extensions to a listed building are those set out in Policy HE7 of PPS5.
- 25.14 Where listed buildings are being altered for the provision of access for people with disabilities, the Council will balance their needs with the interests of conservation and preservation. We will expect design approaches to be fully informed by an audit of conservation constraints and access needs, and to have considered all available options. The listed nature of a building does not preclude the development of inclusive design solutions, and the Council expects sensitivity and creativity to be employed in achieving solutions that meet the needs of accessibility and conservation.
- 25.15 The setting of a listed building is of great importance and should not be harmed by unsympathetic neighbouring development. While the setting of a listed building may be limited to its immediate surroundings, it often can extend some distance from it. The value of a listed building can be greatly diminished if unsympathetic development elsewhere harms its appearance or its harmonious relationship with its surroundings. Applicants will be expected to provide sufficient information about the proposed development and its relationship with its immediate setting, in the form of a design statement.
- 25.16 Proposals that reduce the energy consumption of listed buildings will be welcomed provided that they do not cause harm to the special architectural and historic interest of the building or group. Energy use can be reduced by means that do not harm the fabric or appearance of the building, for instance roof insulation, draught proofing and secondary glazing, more efficient boilers and heating/lighting systems, and use of green energy sources. Depending on the form of the building, renewable energy technologies may also be installed, for instance solar water heating and photovoltaics.
- 25.17 Our Camden Planning Guidance supplementary document provides further information on our approach to listed buildings.

Map 4: Archaeological Priority Areas



This map is based on Ordnance Survey Material with the permission of Ordnance Survey on behalf of the Controller of Her Majesty's Stationery Office ©. Unauthorised reproduction infringes Crown copyright and may lead to prosecution or civil proceedings. Licence number LA100019726, year 2010.

Archaeology

25.18 Camden has a rich archaeological heritage comprised of both above and below ground remains, in the form of individual finds, evidence of former settlements and standing structures. These remains are vulnerable to modern development and land use. There are 13 archaeological priority areas in the borough (see map 4):

- | | | |
|------------------------|------------------|---------------------------|
| Hampstead Heath | Hampstead | Highgate |
| London Suburbs | South End | Bagnigge Wells |
| St Pancras | West End | Canalside Industry |
| Kentish Town | Kilburn | |
| Battle Bridge | Belsize | |

- 25.19 The archaeological priority areas provide a general guide to areas of archaeological remains, but do not indicate every find site in the borough. These are based on current knowledge and may be refined or altered as a result of future archaeological research or discoveries.
- 25.20 It is likely that archaeological remains will be found throughout the borough, both within and outside the archaeological priority areas. Many archaeological remains have yet to be discovered, so their extent and significance is not known. When researching the development potential of a site, developers should, in all cases, assess whether the site is known or is likely to contain archaeological remains. Where there is good reason to believe that there are remains of archaeological importance on a site, the Council will consider directing applicants to supply further details of proposed developments, including the results of archaeological desk-based assessment and field evaluation. Scheduled monument consent must be obtained before any alterations are made to scheduled ancient monuments. Camden has only one scheduled ancient monument: Boadicea's Grave in Hampstead Heath.
- 25.21 If important archaeological remains are found, the Council will seek to resist development which adversely affects remains and to minimise the impact of development schemes by requiring either in situ preservation or a programme of excavation, recording, publication and archiving of remains. There will usually be a presumption in favour of in situ preservation of remains and, if important archaeological remains are found, measures should be adopted to allow the remains to be permanently preserved in situ. Where in situ preservation is not feasible, no development shall take place until satisfactory excavation and recording of the remains has been carried out on site, and subsequent analysis, publication and archiving undertaken by an archaeological organisation approved by the Council.
- 25.22 The Council will consult with, and be guided by, English Heritage and the Greater London Archaeology Advisory Service (GLAAS) on the archaeological implications of development proposals. The Greater London Sites and Monuments Record, maintained by English Heritage, contains further information on archaeological sites in Camden. When considering schemes involving archaeological remains, the Council will also have regard to government Planning Policy Guidance (PPG) 16 – Archaeology and Planning.

Other heritage assets

- 25.23 In addition to conservation areas, listed buildings and archaeological remains, Camden contains 14 Parks and Gardens of Special Historic Interest, as identified by English Heritage. There are also 53 London Squares in the borough protected by the London Squares Preservation Act 1931. The Council will encourage the management of Parks and Gardens of Special Historic Interest and London Squares to maintain, and where appropriate, enhance their value and protect their setting. As set out within Core Strategy policy CS14 – *Promoting high quality places and conserving our heritage*, we will consult with English Heritage over proposals affecting these parks and gardens.

Key evidence and references

- Greater London Sites and Monuments Record; English Heritage
- Guidance on conservation area appraisals, English Heritage, 2006
- Guidance on the management of conservation areas, English Heritage, 2006

DP28. Noise and vibration

- 28.1 Noise and vibration can have a major effect on amenity and health and therefore quality of life. Camden's high density and mixed-use nature means that disturbance from noise and vibration is a particularly important issue in the borough. Camden's Core Strategy recognises the importance of this issue for Camden's residents and policy DP28 contributes to implementing a number of Core Strategy policies, including CS5 – *Managing the impact of growth and development*, CS9 – *Achieving a successful Central London*, CS11 – *Promoting sustainable and efficient travel* and CS16 – *Improving Camden's health and well-being*.

DP POLICY

DP28 – Noise and vibration

The Council will seek to ensure that noise and vibration is controlled and managed and will not grant planning permission for:

- a) development likely to generate noise pollution; or
- b) development sensitive to noise in locations with noise pollution, unless appropriate attenuation measures are provided.

Development that exceeds Camden's Noise and Vibration Thresholds will not be permitted.

The Council will only grant permission for plant or machinery if it can be operated without cause harm to amenity and does not exceed our noise thresholds.

The Council will seek to minimise the impact on local amenity from the demolition and construction phases of development. Where these phases are likely to cause harm, conditions and planning obligations may be used to minimise the impact.

- 28.2 The effect of noise and vibration can be minimised by separating uses sensitive to noise from development that generates noise and by taking measures to reduce any impact. Noise sensitive development includes housing, schools and hospitals as well as offices, workshops and open spaces, while noise is generated by rail, road and air traffic, industry, entertainment (e.g. nightclubs, restaurants and bars) and other uses.
- 28.3 The Council will only grant planning permission for development sensitive to noise in locations that experience noise pollution, and for development likely to generate noise pollution, if appropriate attenuation measures are taken, such as double-glazing. Planning permission will not be granted for development sensitive to noise in locations that have unacceptable levels of noise. Where uses sensitive to noise are proposed close to an existing source of noise or when development that generates noise is proposed, the Council will require an acoustic report to ensure compliance with PPG24: *Planning and noise*. A condition will be imposed to require that the plant and equipment which may be a source of noise pollution is kept working efficiently and within the required noise limits and time restrictions. Conditions may also be imposed to ensure that attenuation measures are kept in place and effective throughout the life of the development.
- 28.4 In assessing applications, we will have regard to the Noise and Vibration Thresholds, set out below. These represent an interpretation of the standards in PPG24 and include an evening period in addition to the day and night standards contained in the PPG, which provide a greater degree of control over noise and vibration during a period when noise is often an issue in the borough.

Table A: Noise levels on residential sites adjoining railways and roads at which planning permission will not be granted

Noise description and location of measurement	Period	Time	Sites adjoining railways	Sites adjoining roads
Noise at 1 metre external to a sensitive façade	Day	0700-1900	74 dB L_{Aeq} 12h	72 dB L_{Aeq} 12h
Noise at 1 metre external to a sensitive façade	Evening	1900-2300	74 dB L_{Aeq} 4h	72 dB L_{Aeq} 4h
Noise at 1 metre external to a sensitive façade	Night	2300-0700	66 dB L_{Aeq} 8h	66 dB L_{Aeq} 8h

Table B: Noise levels on residential streets adjoining railways and roads at and above which attenuation measures will be required

Noise description and location of measurement	Period	Time	Sites adjoining railways	Sites adjoining roads
Noise at 1 metre external to a sensitive façade	Day	0700-1900	65 dB L_{Aeq} 12h	62 dB L_{Aeq} 12h
Noise at 1 metre external to a sensitive façade	Evening	1900-2300	60 dB L_{Aeq} 4h	57 dB L_{Aeq} 4h
Noise at 1 metre external to a sensitive façade	Night	2300-0700	55 dB L_{Aeq} 1h	52 dB L_{Aeq} 1h
Individual noise events several times an hour	Night	2300-0700	>82 dB L_{Amax} (S time weighting)	>82 dB L_{AMAX} (S time weighting)

Table C: Vibration levels on residential sites adjoining railways and roads at which planning permission will not be granted

Vibration description and location of measurement	Period	Time	Vibration levels
Vibration inside critical areas such as a hospital operating theatre	Day, evening and night	0000-2400	0.1 VDV ms ^{-1.75}
Vibration inside dwellings	Day and evening	0700-2300	0.2 to 0.4 VDV ms ^{-1.75}
Vibration inside dwellings	Night	2300-0700	0.13 VDV ms ^{-1.75}
Vibration inside offices	Day, evening and night	0000-2400	0.4 VDV ms ^{-1.75}
Vibration inside workshops	Day, evening and night	0000-2400	0.8 VDV ms ^{-1.75}

Where dwellings may be affected by ground-borne regenerated noise internally from, for example, railways or underground trains within tunnels, noise levels within the rooms should not be greater than 35dB(A)_{max}

Table D: Noise levels from places of entertainment on adjoining residential sites at which planning permission will not be granted

Noise description and measurement location	Period	Time	Sites adjoining places of entertainment
Noise at 1 metre external to a sensitive façade	Day and evening	0700-2300	L_{Aeq} 5m shall not increase by more than 5dB*
Noise at 1 metre external to a sensitive façade	Night	2300-0700	L_{Aeq} 5m shall not increase by more than 3dB*
Noise inside any living room of any noise sensitive premises, with the windows open or closed	Night	2300-0700	L_{Aeq} 5m (in the 63Hz Octave band measured using the 'fast' time constant) should show no increase in dB*

* As compared to the same measure, from the same position, and over a comparable period, with no entertainment taking place

Table E: Noise levels from plant and machinery at which planning permission will not be granted

Noise description and location of measurement	Period	Time	Noise level
Noise at 1 metre external to a sensitive façade	Day, evening and night	0000-2400	5dB(A) <LA90
Noise that has a distinguishable discrete continuous note (whine, hiss, screech, hum) at 1 metre external to a sensitive façade.	Day, evening and night	0000-2400	10dB(A) <LA90
Noise that has distinct impulses (bangs, clicks, clatters, thumps) at 1 metre external to a sensitive façade.	Day, evening and night	0000-2400	10dB(A) <LA90
Noise at 1 metre external to sensitive façade where LA90>60dB	Day, evening and night	0000-2400	55dBL $_{Aeq}$

Key evidence and references

- Camden's Noise Strategy, 2002
- The London Plan (Consolidated with Alterations since 2004), 2008
- Planning Policy Guidance 24: Planning and noise

DP29. Improving access

- 29.1 Part of achieving the Community Strategy vision of making Camden a borough of opportunity is making sure everyone has access to important facilities, such as housing, jobs, educational opportunities and community facilities. Good access benefits everyone. However, many people are disadvantaged by poor access to facilities and buildings and vulnerable and disadvantaged groups, such as the elderly and disabled people, can be particularly affected. Poor access can also be caused by difficulties in using the facilities themselves.
- 29.2 Policy DP29 contributes to the implementation of Core Strategy policy CS14 – *Promoting high quality places and conserving our heritage* which seeks the highest standards of access in all buildings and places. It also helps to deliver elements of policies CS1 – *Distribution of growth*, CS5 – *Managing the impact of growth and development* and CS11 – *Promoting sustainable and efficient travel*.

DP POLICY

DP29 – Improving access

The Council will seek to promote fair access and remove the barriers that prevent people from accessing facilities and opportunities. We will:

- a) expect all buildings and places meet the highest practicable standards of access and inclusion;
- b) require buildings and spaces that the public may use to be designed to be as accessible as possible;
- c) expect facilities to be located in the most accessible parts of the borough;
- d) expect spaces between buildings to be fully accessible;
- e) encourage accessible public transport;
- f) secure car parking for disabled people; and
- g) secure accessible homes.

- 29.3 Many people experience difficulties in using buildings and spaces as their access needs are ignored or considered too late in the development process to ensure the removal of barriers that can exclude or segregate. We will seek to make sure that any expansion of activities that are likely to lead to a significant increase in travel demand are located in the parts of the borough that can be most easily reached by walking, cycling and public transport.
- 29.4 The Council will require new buildings and spaces that the public may use to be fully accessible to promote equality of opportunity. As accessibility is influenced by perceptions as well as physical factors, buildings should also be designed to appear, as well as be, accessible. We will require a Design and Access Statement for new developments of public buildings and spaces to show how the principles of inclusive design, including the specific needs of disabled people, have been integrated into the proposed development, and how inclusion will be maintained and managed.
- 29.5 The Council will balance the needs of people with mobility difficulties with the interests of conservation and preservation. We will seek sensitive design solutions to achieve access for all to, and within, listed buildings that require public access. Policy DP25 – *Conserving Camden’s heritage* sets out our detailed approach to development affecting listed buildings.



- 29.6 Making sure that people can move through streets and places, easily and safely is as important as making the buildings themselves accessible. The Council will seek improvements for pedestrians and people with disabilities to ensure good quality access and circulation arrangements, including improvements to existing routes and footways. The Camden Streetscape Design Manual and our Camden Planning Guidance supplementary document provide further more detailed guidance on this issue.
- 29.7 The Council aims to increase the attractiveness of public transport by creating networks which make people feel safe, link to all parts of the borough and enable use by people with mobility difficulties. The provision of public transport allows independence in travel choices and is vital to those without access to, or without the means to use, a car. We are committed to a number of public transport improvement schemes to increase public transport capacity and to improve accessibility throughout the borough. The Core Strategy gives further detail on the key transport infrastructure proposals that are being promoted in Camden, in particular in policies CS2 – *Growth areas* and CS11 – *Promoting sustainable and efficient travel* and Core Strategy Appendix 1 – *Key Infrastructure Programmes and Projects*.
- 29.8 While the Council encourages public transport and car-free schemes, in line with sustainable development objectives, we recognise that some disabled people rely on private motorised transport. We will therefore require relevant planning applications to demonstrate how the needs of disabled drivers have been addressed. We will also welcome disabled parking and drop-off facilities which are integrated with public transport facilities.
- 29.9 The Council believes that new housing should allow less mobile residents to live as independently as possible. Accessible homes give them greater choice about where to live and mean people are less likely to need to move when they become less mobile. The Council will therefore seek to secure ‘lifetime homes’, which are designed to meet the differing requirements created by changing life circumstances, and housing accessible to wheelchair users. Detail on the Council’s approach to lifetime homes and wheelchair housing is set out in policy DP6 – *Lifetime homes and wheelchair homes*.

Key evidence and references

- The London Plan (consolidated with changes since 2004); Mayor of London; 2008
- Camden Streetscape Design Manual
- Easy Access to Historic Buildings, English Heritage, 2004