

Demolition Basement Floor Plan

Issued For
PLANNING

General Notes:
THIS DRAWING HAS BEEN PREPARED BY DS DESIGN SOLUTIONS AND THE DATA CONTAINED HEREIN MAY BE USED OR REPRODUCED ONLY WITH DS DESIGN SOLUTIONS' APPROVAL.

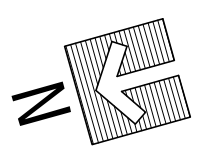
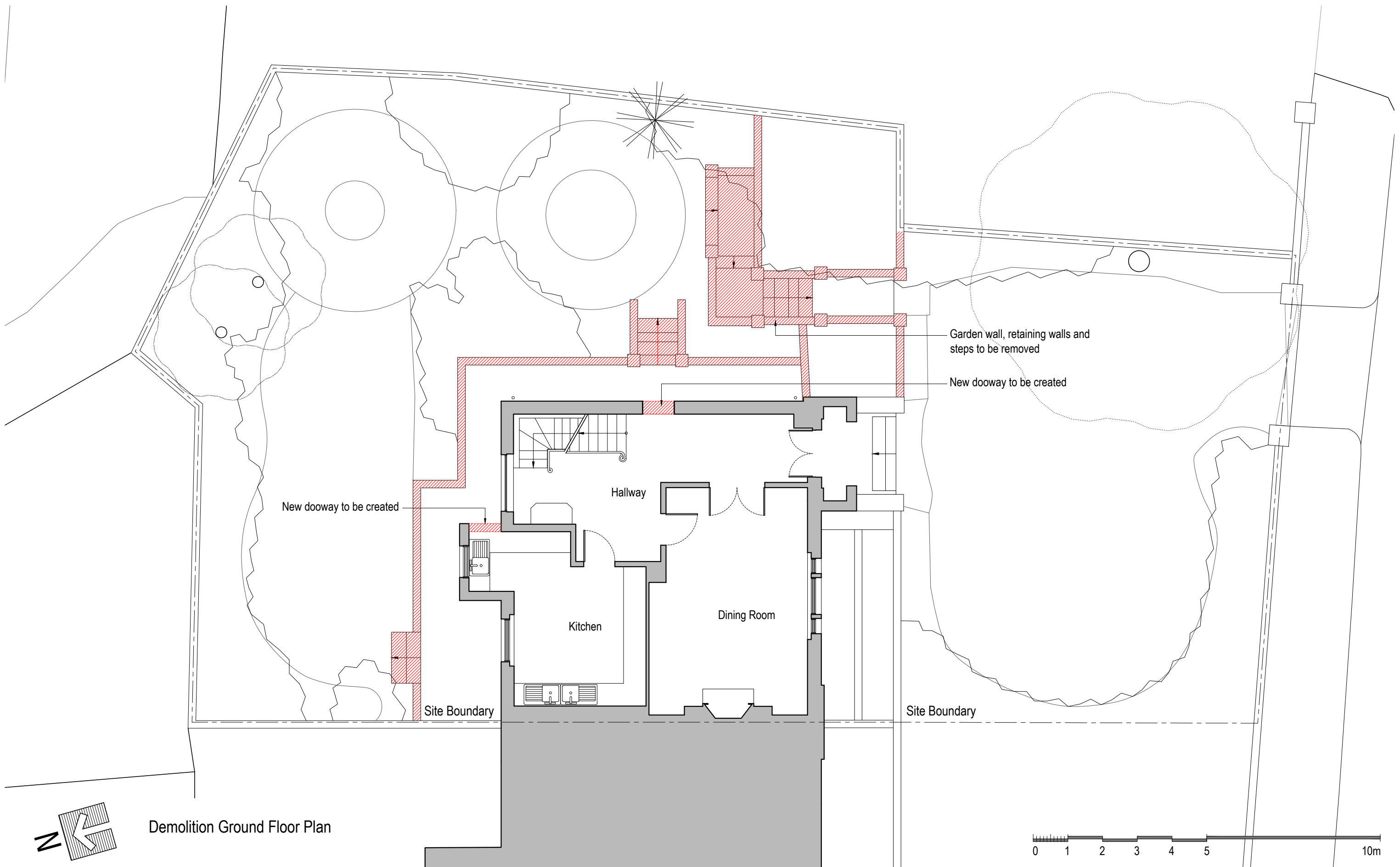
Rev.	Description	Date	Signed	Checked

Date	Signed	Checked

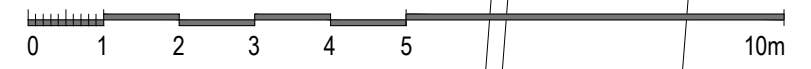
Scale 1:100 @ A3
1:50 @ A1

Scale	Date	Drawn by	Checked by
1:100 @ A3	20.04.2016	AL	DS
Drawing Title Demolition Plan Basement Floor Plan			
Project 8 Prince Albert Road London NW1 7SR			

 design solutions www.DesignSolutionsUK.com	561 Finchley Road London NW3 7BJ Phone 020 7433 3939 Fax 020 7794 4279		
	Project no. 14/0313	Drawing no. 201	Revision P00



Demolition Ground Floor Plan



Issued For
PLANNING

General Notes:
THIS DRAWING HAS BEEN PREPARED BY DS DESIGN SOLUTIONS AND THE DATA CONTAINED HEREIN MAY BE USED OR REPRODUCED ONLY WITH DS DESIGN SOLUTIONS' APPROVAL.

Rev.	Description	Date	Signed	Checked

--	--

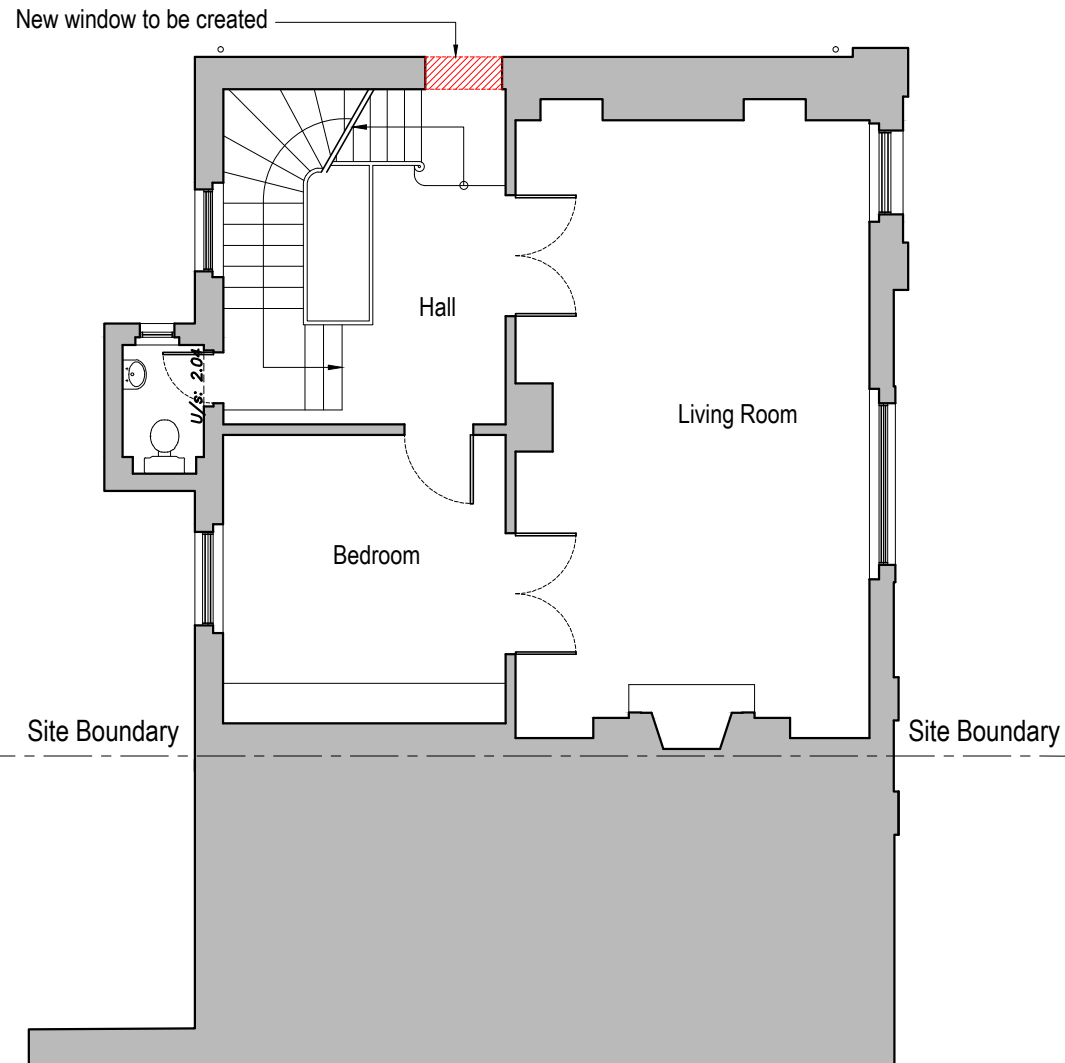
Scale 1:100 @ A3 1:50 @ A1

Scale 1:100 @ A3	Date 20.04.2016	Drawn by AL	Checked by DS
Drawing Title Demolition Plan Ground Floor Plan			
Project 8 Prince Albert Road London NW1 7SR			

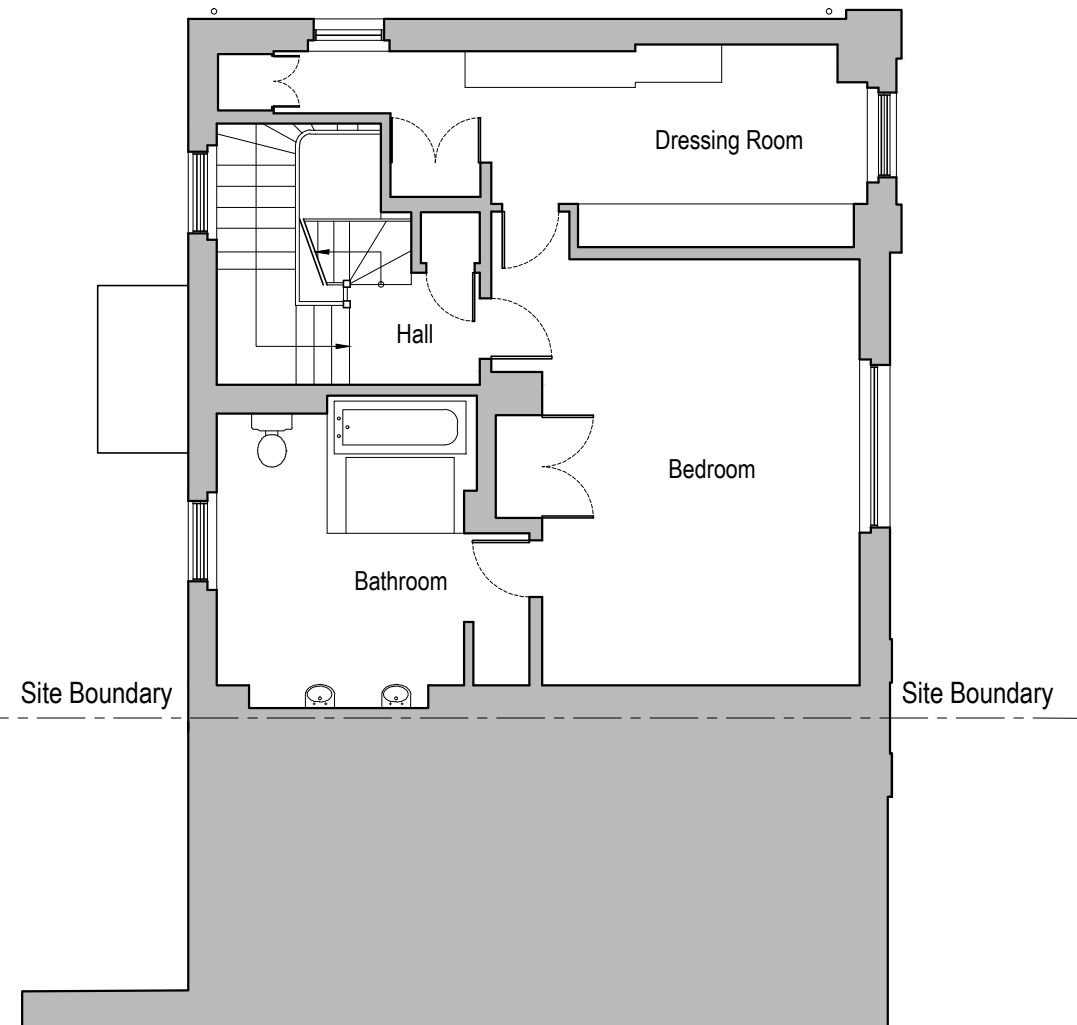
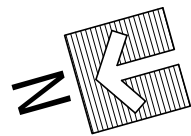
561 Finchley Road
London NW3 7BJ
Phone 020 7433 3939
Fax 020 7794 4279
www.DesignSolutionsUK.com

Project no. 14/0313	Drawing no. 202	Revision P01
------------------------	--------------------	-----------------

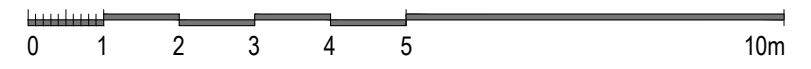
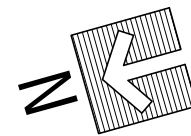
[SECOND FLOOR TO REMAIN AS EXISTING]



Demolition First Floor Plan



Demolition Second Floor Plan



Issued For
PLANNING

General Notes:
THIS DRAWING HAS BEEN PREPARED BY DS DESIGN SOLUTIONS AND THE DATA CONTAINED HEREIN MAY BE USED OR REPRODUCED ONLY WITH DS DESIGN SOLUTIONS' APPROVAL.

Rev.	Description	Date	Signed	Checked

--

Scale 1:100 @ A3 1:50 @ A1

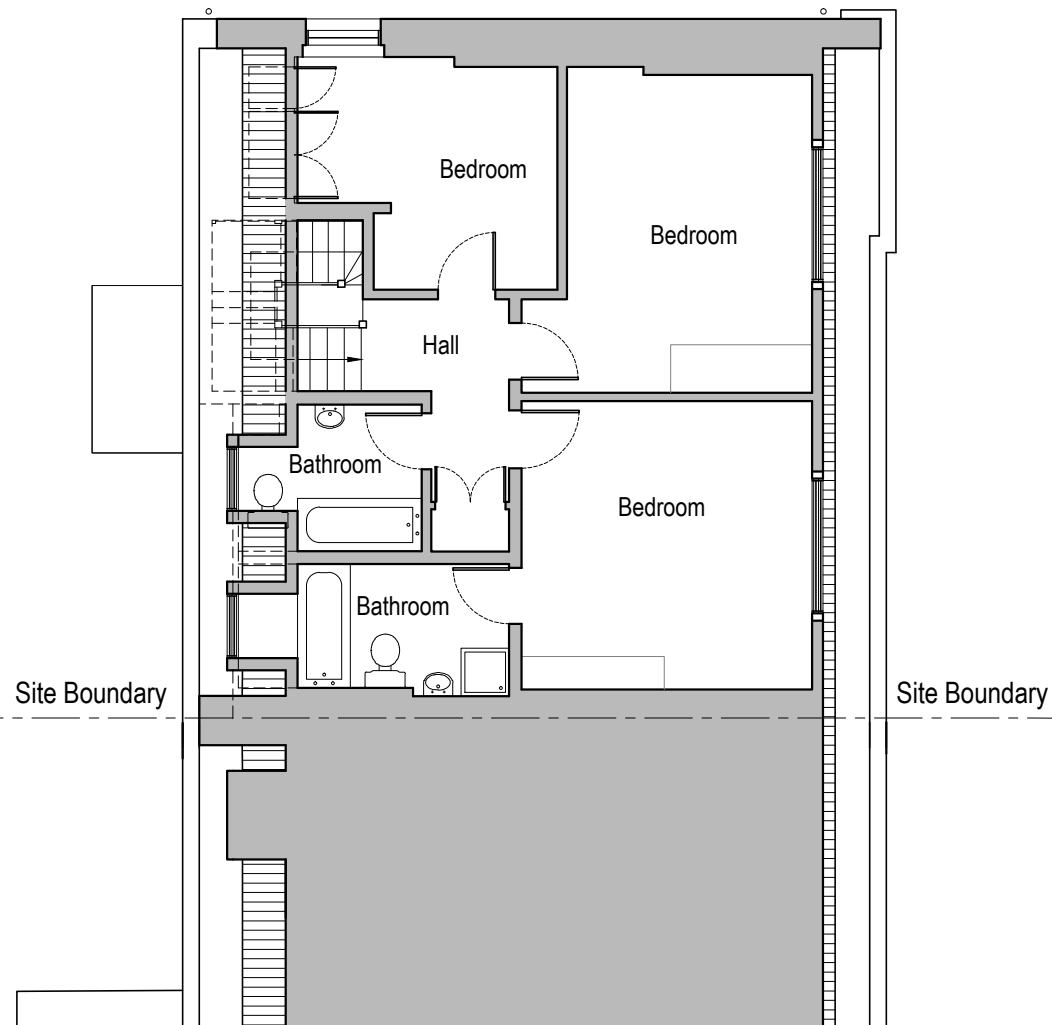
Scale 1:100 @ A3	Date 20.04.2016	Drawn by AL	Checked by DS
Drawing Title Demolition Plan - First Floor Plan - Second Floor Plan			
Project 8 Prince Albert Road London NW1 7SR			

561 Finchley Road
London NW3 7BJ
Phone 020 7433 3939
Fax 020 7794 4279
www.DesignSolutionsUK.com

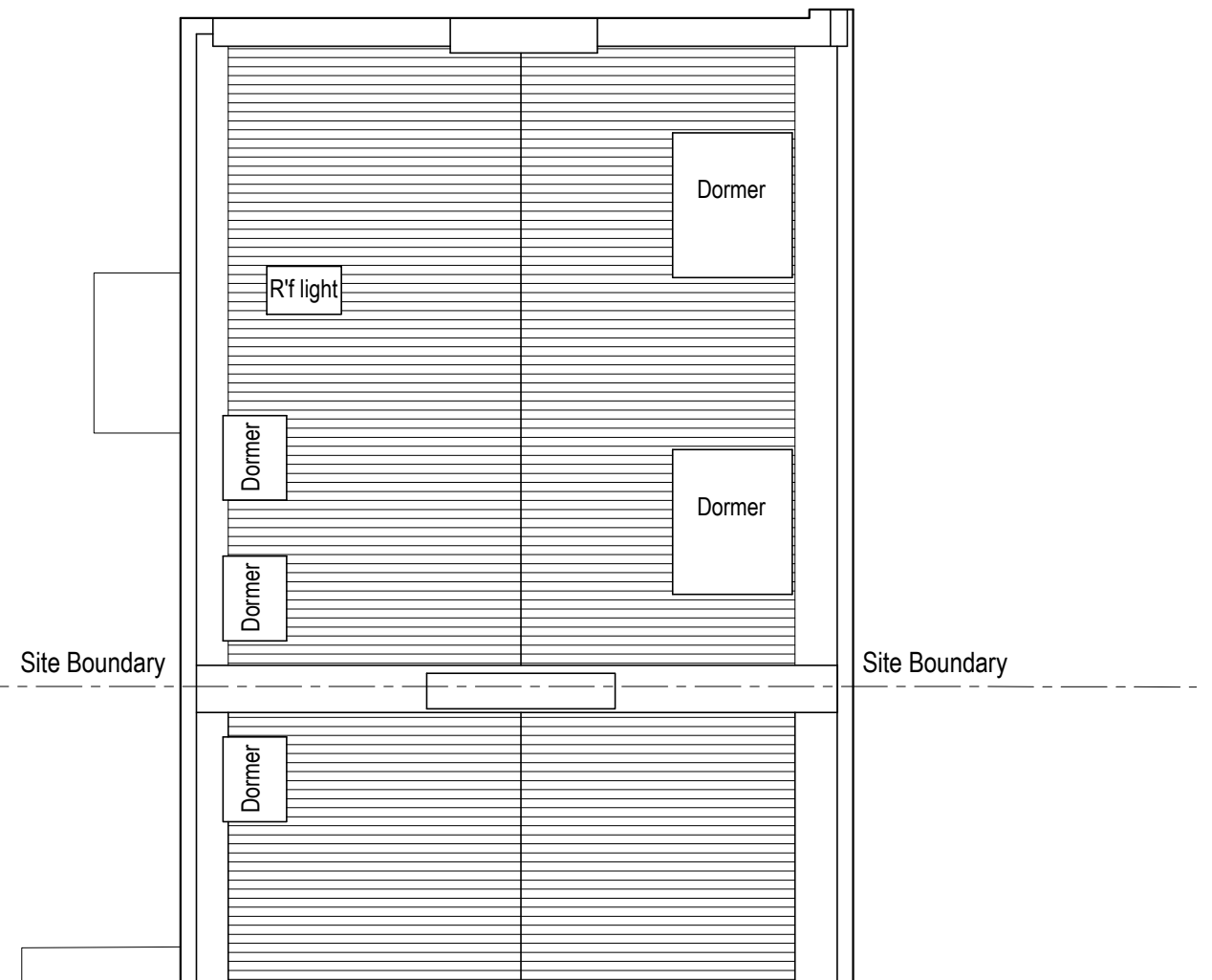
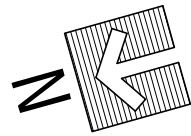
Project no. 14/0313	Drawing no. 203	Revision P00
------------------------	--------------------	-----------------

[THIRD FLOOR TO REMAIN AS EXISTING]

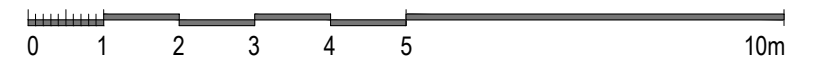
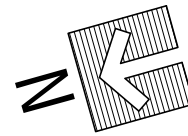
[ROOF TO REMAIN AS EXISTING]



Demolition Third Floor Plan



Demolition Roof Plan



Issued For **PLANNING**

General Notes:
THIS DRAWING HAS BEEN PREPARED BY DS DESIGN SOLUTIONS AND THE DATA CONTAINED HEREIN MAY BE USED OR REPRODUCED ONLY WITH DS DESIGN SOLUTIONS' APPROVAL.

Rev.	Description	Date	Signed	Checked

--	--

Scale 1:100 @ A3 1:50 @ A1

Scale 1:100 @ A3	Date 20.04.2016	Drawn by AL	Checked by DS
Drawing Title Demolition Plan - Third Floor Plan - Roof Plan			
Project 8 Prince Albert Road London NW1 7SR			

561 Finchley Road
London NW3 7BJ
Phone 020 7433 3939
Fax 020 7794 4279
www.DesignSolutionsUK.com

Project no. 14/0313	Drawing no. 204	Revision P00
------------------------	--------------------	-----------------

9 Prince Albert Road

8 Prince Albert Road

7 Prince Albert Road

Site Boundary

Site Boundary



Third Floor

Second Floor

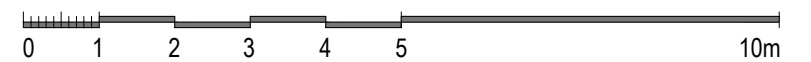
First Floor

Garden walls to be removed

Ground Floor

Lower Ground Floor

Demolition Front Elevation



Issued For
PLANNING

General Notes:
THIS DRAWING HAS BEEN PREPARED BY DS DESIGN SOLUTIONS AND THE DATA CONTAINED HEREIN MAY BE USED OR REPRODUCED ONLY WITH DS DESIGN SOLUTIONS' APPROVAL.

Rev.	Description	Date	Signed	Checked

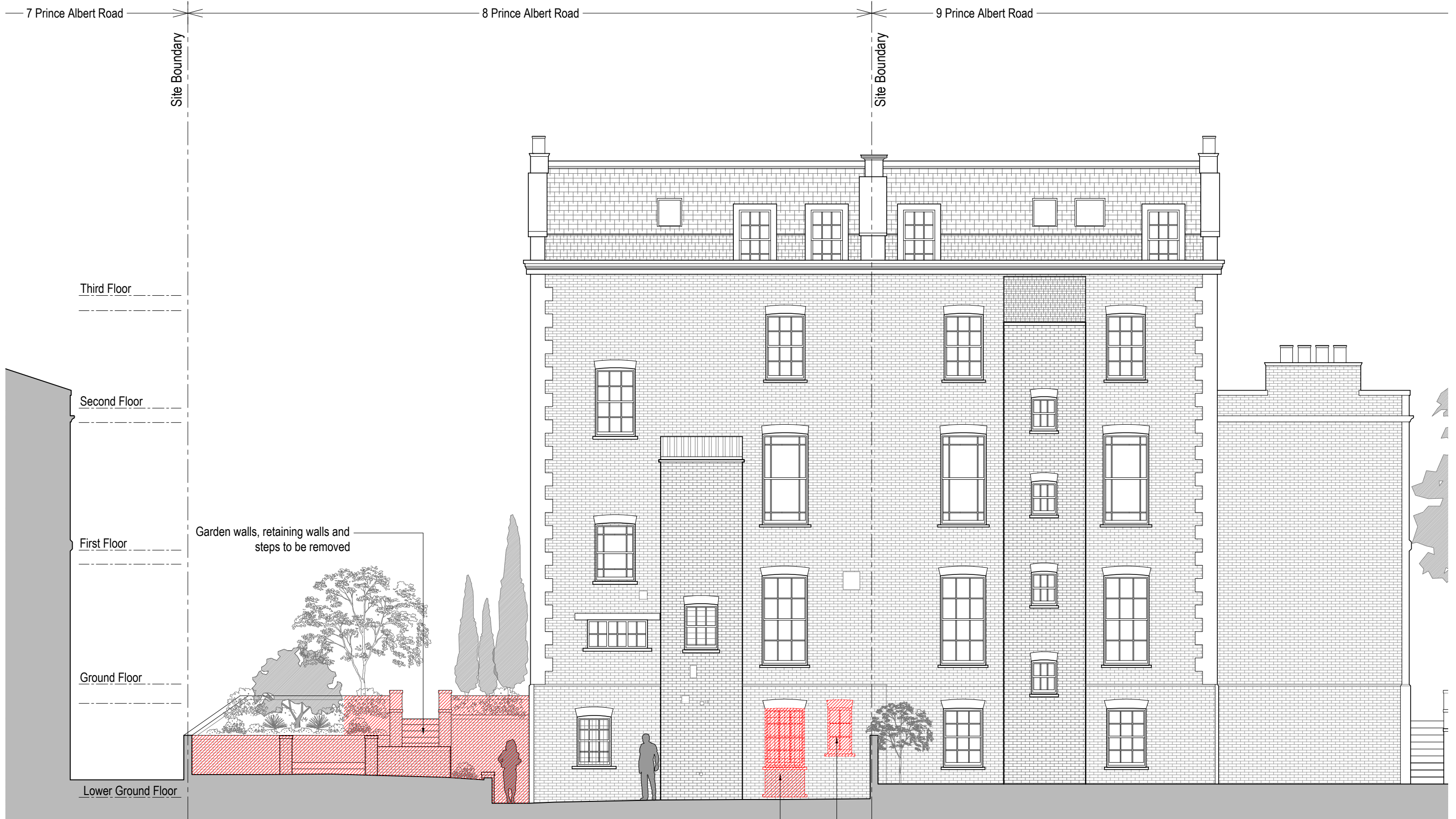
--

Scale 1:100 @ A3
1:50 @ A1

Scale	Date	Drawn by	Checked by
1:100 @ A3	20.04.2016	AL	DS
Drawing Title			
Demolition Elevation Front Elevation			
Project			
8 Prince Albert Road London NW1 7SR			

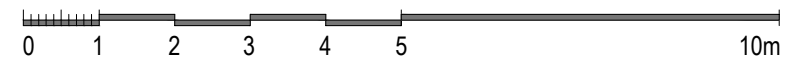
561 Finchley Road
London NW3 7BJ
Phone 020 7433 3939
Fax 020 7794 4279
www.DesignSolutionsUK.com

Project no. 14/0313	Drawing no. 221	Revision P00
------------------------	--------------------	-----------------



Existing window to be removed and blocked up to match existing brickwork (including arch)
 Existing window and brickwork below to be removed

Demolition Rear Elevation



Issued For
PLANNING

General Notes:
 THIS DRAWING HAS BEEN PREPARED BY DS DESIGN SOLUTIONS AND THE DATA CONTAINED HEREIN MAY BE USED OR REPRODUCED ONLY WITH DS DESIGN SOLUTIONS' APPROVAL.

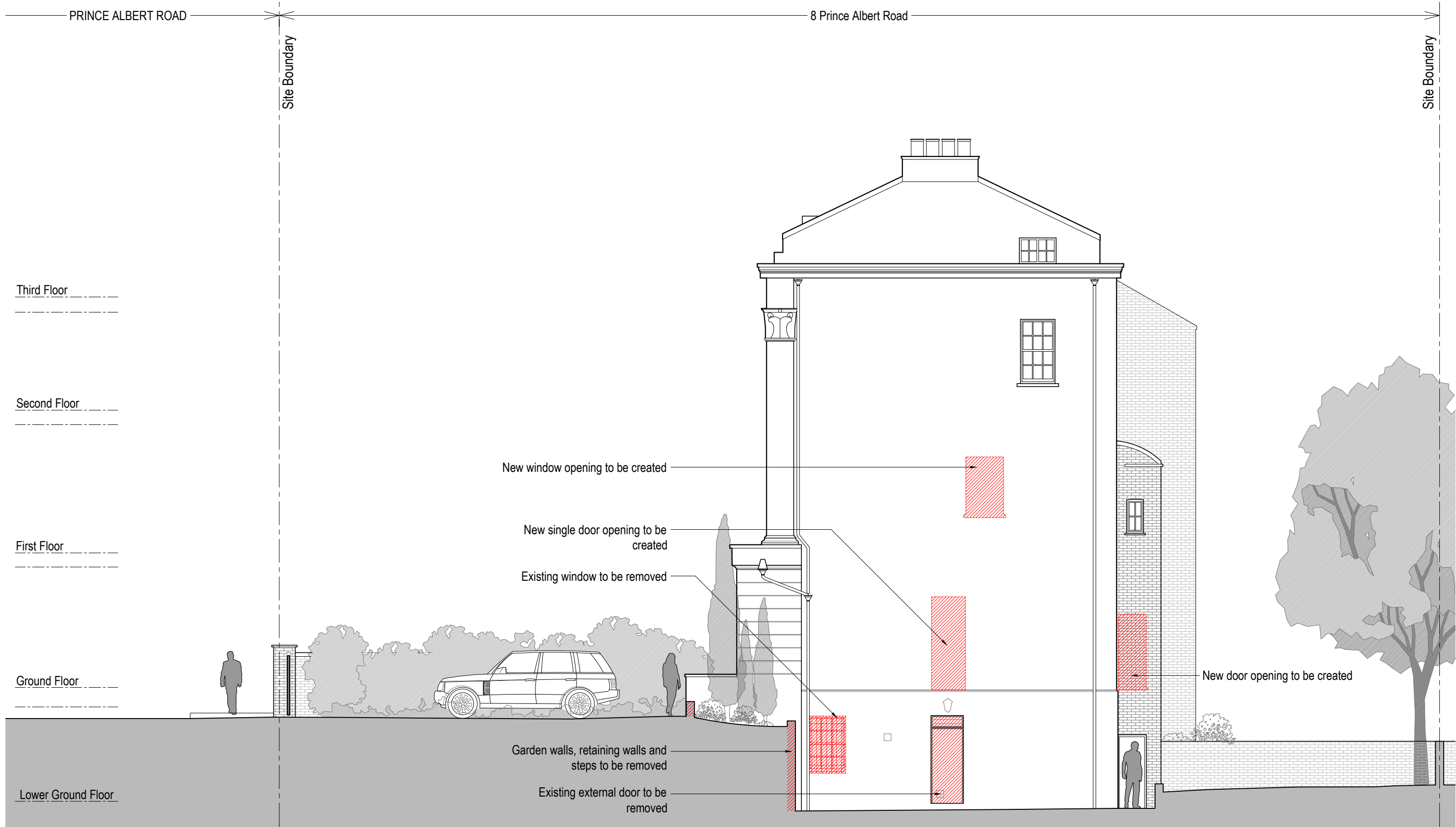
Rev.	Description	Date	Signed	Checked

--	--

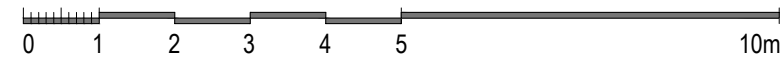
Scale 1:100 @ A3
 1:50 @ A1

Scale	Date	Drawn by	Checked by
1:100 @ A3	20.04.2016	AL	DS
Drawing Title			
Demolition Elevation Rear Elevations			
Project			
8 Prince Albert Road London NW1 7SR			

	561 Finchley Road London NW3 7BJ Phone 020 7433 3939 Fax 020 7794 4279 www.DesignSolutionsUK.com		
	Project no.	Drawing no.	Revision
14/0313	222	P00	



Demolition Side Elevation



Issued For PLANNING
General Notes: THIS DRAWING HAS BEEN PREPARED BY DS DESIGN SOLUTIONS AND THE DATA CONTAINED HEREIN MAY BE USED OR REPRODUCED ONLY WITH DS DESIGN SOLUTIONS' APPROVAL.

Rev.	Description	Date	Signed	Checked

--

Scale 1:100 @ A3 1:50 @ A1

Scale 1:100 @ A3	Date 20.04.2016	Drawn by AL	Checked by DS
Drawing Title Demolition Elevation Side Elevations			
Project 8 Prince Albert Road London NW1 7SR			

	561 Finchley Road London NW3 7BJ Phone 020 7433 3939 Fax 020 7794 4279 www.DesignSolutionsUK.com		
	Project no. 14/0313	Drawing no. 223	Revision P01