

# Which? HQ

Address  
**2 Marylebone Road &  
 1-9 Albany Street**



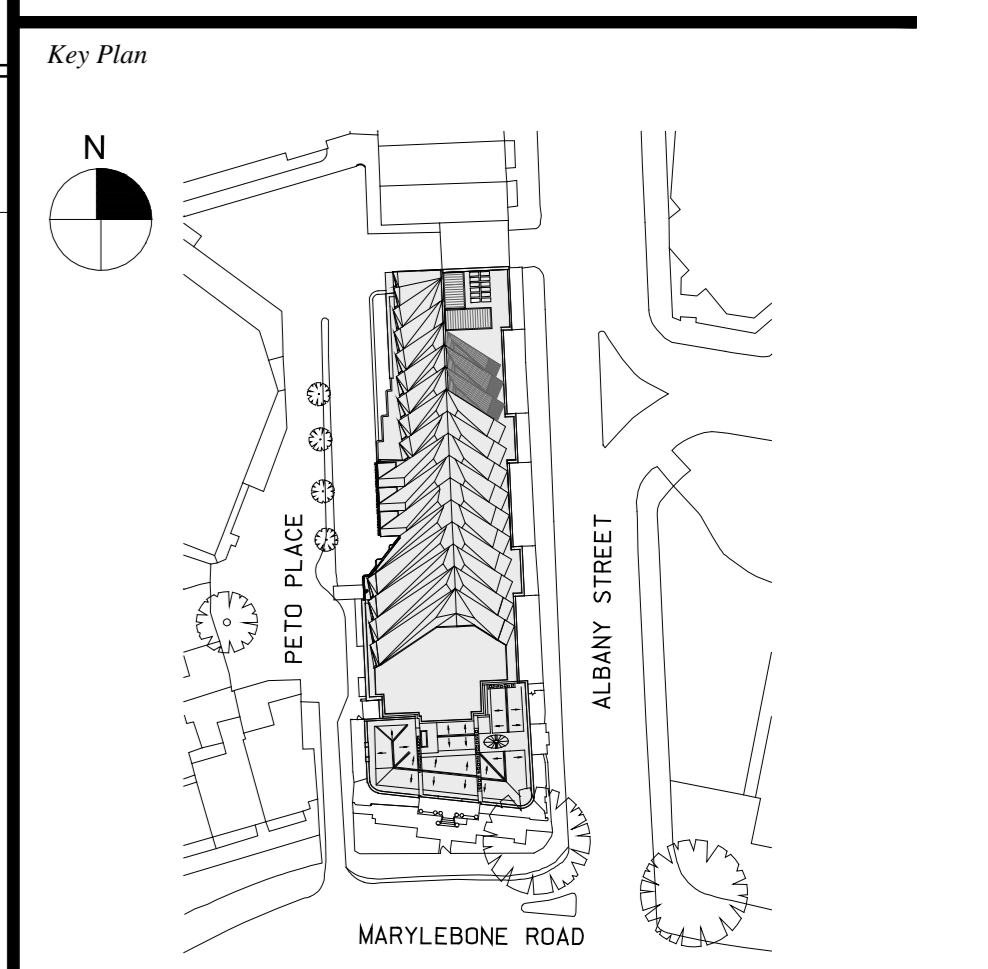
Client  
 Which?  
 2 Marylebone Road  
 London, NW1 4DF  
 Tel: +44 (0)20 7770 7000 Fax: +44 (0)20 7770 7600

Architect  
 Kohn Pedersen Fox Associates (International) PA  
 Architects & Planning Consultants  
 7a Langley Street  
 London WC2H 9JA, United Kingdom  
 Tel: +44 (0)20 31195300 Fax: +44 (0)20 74971175

SCOPE OF PROPOSAL

0m 1m 2m 4m

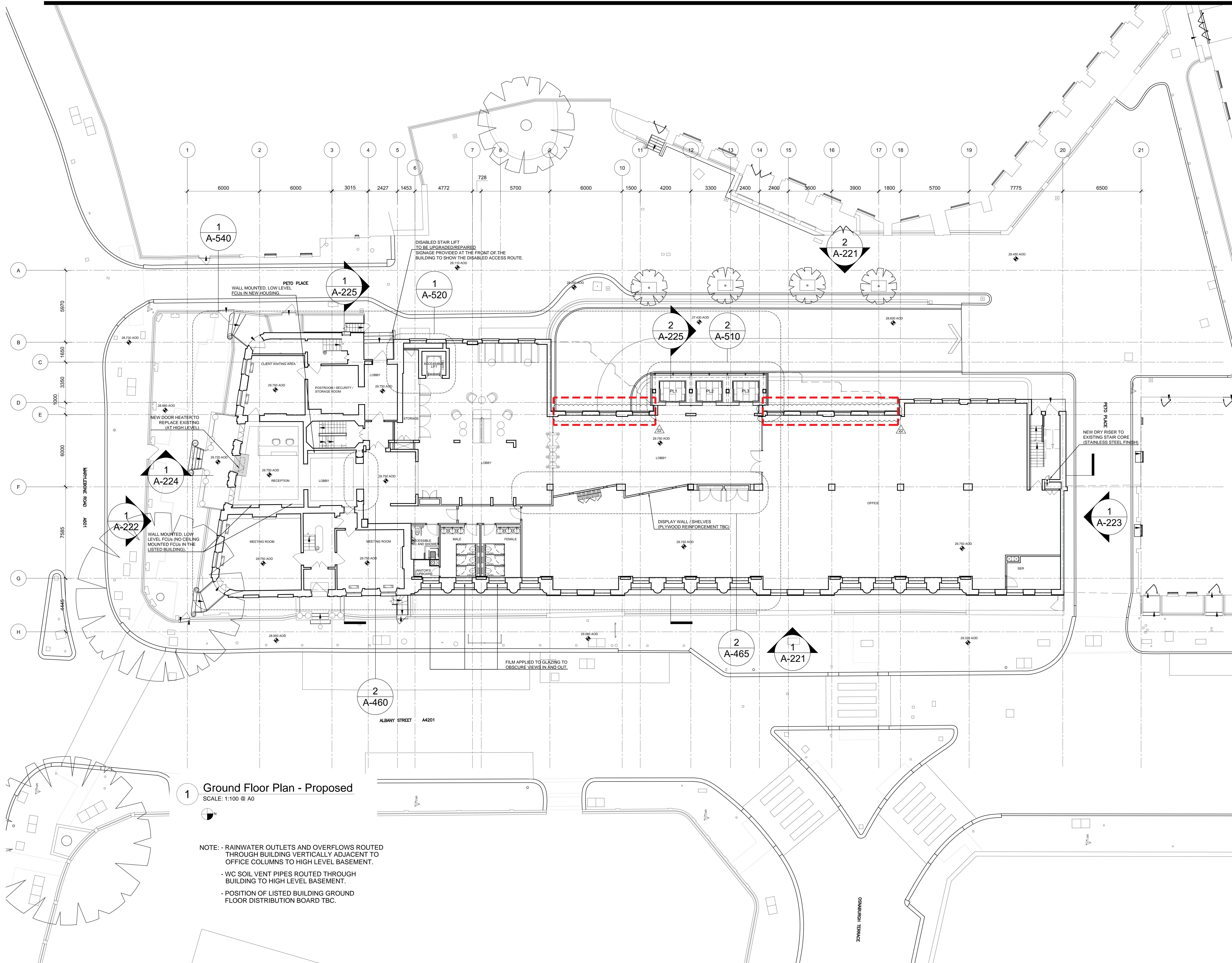
No.	Issue	Date
22	PETO PLACE WINDOWS APP.	25.07.16
21	PETO PLACE WINDOWS APP.	03.06.16
20	CONSTRUCTION 3	10.05.16
19	CONSTRUCTION 2	29.02.16
18	CONSTRUCTION 1	30.10.15
17	TENDER UPDATE	02.10.15
16	STAGE E UPDATE	18.09.15
15	STAGE E ISSUE	14.08.15
14	S73 PLANNING	30.07.15
13	REVISED STAGE 1 TENDER	30.06.15
12	REVISED STAGE D	26.06.15
11	STAGE 1 TENDER	08.05.15
10	STAGE D ISSUE	24.04.15
09	STAGE D FREEZE UPDATE	17.04.15
08	STAGE D FREEZE	10.04.15
07	FOR INFORMATION	23.03.15
06	DESIGN UPDATE	19.02.15
05	DESIGN UPDATE	12.02.15



Date  
 18.04.13  
 Scale  
 1:100 @ A0  
 Project No.  
 859  
 Drawn By  
 -

**GROUND FLOOR PLAN  
 PROPOSED  
 +29.750m**

# A-101



**1 Ground Floor Plan - Proposed**  
 SCALE: 1:100 @ A0

NOTE: - RAINWATER OUTLETS AND OVERFLOWS ROUTED THROUGH BUILDING VERTICALLY ADJACENT TO OFFICE COLUMNS TO HIGH LEVEL BASEMENT.  
 - WC SOIL VENT PIPES ROUTED THROUGH BUILDING TO HIGH LEVEL BASEMENT.  
 - POSITION OF LISTED BUILDING GROUND FLOOR DISTRIBUTION BOARD TBC.