

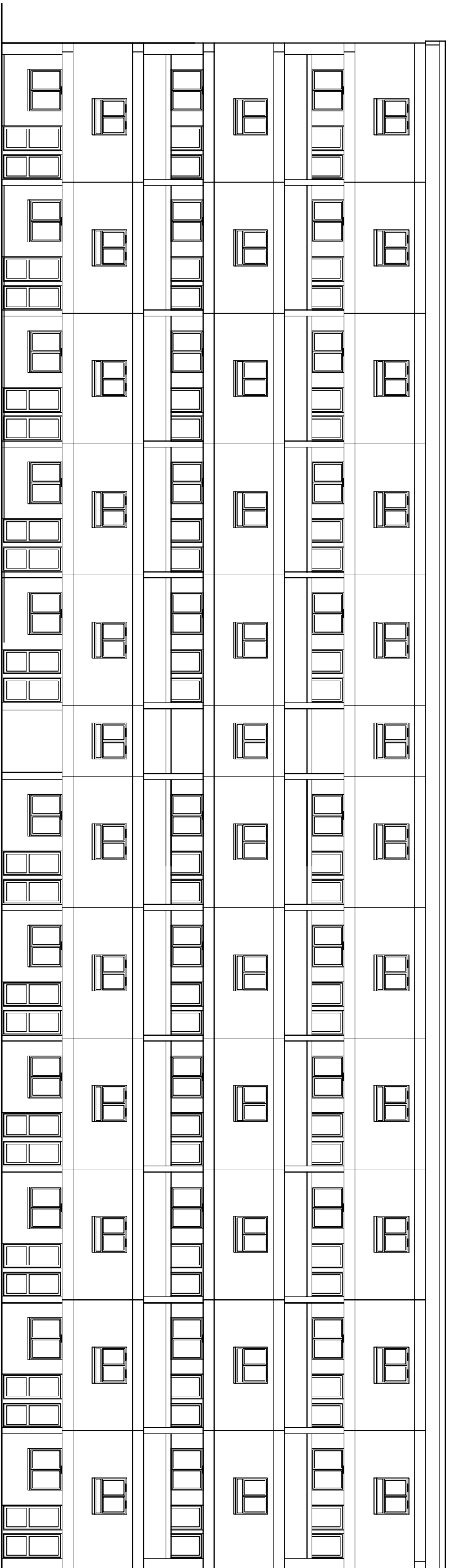
NOTES

Existing windows and front entrance doors double-glazed with aluminium frames, polyester powder coated White.

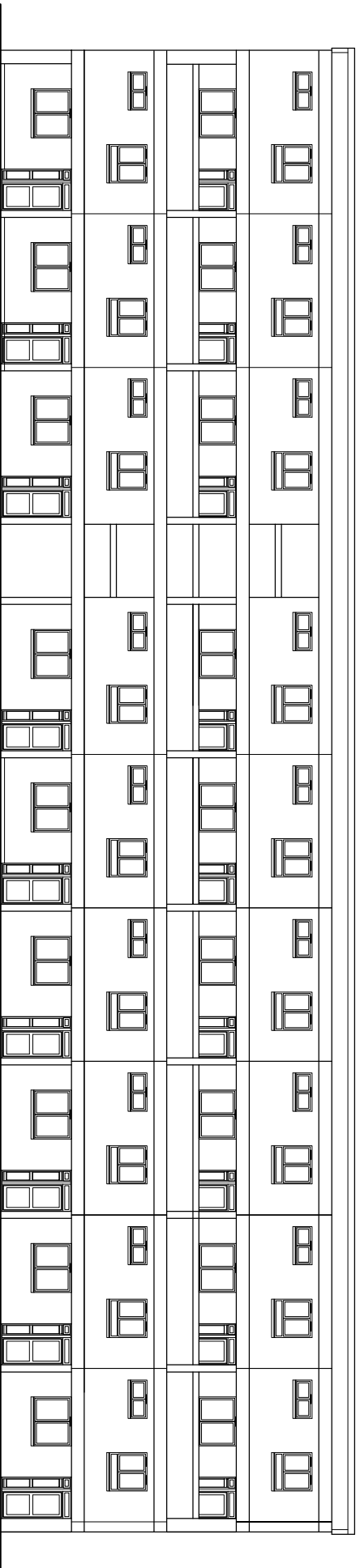
Access elevations drawn.

The elevations of the following blocks are identical in terms of detailing to Warmsworth -

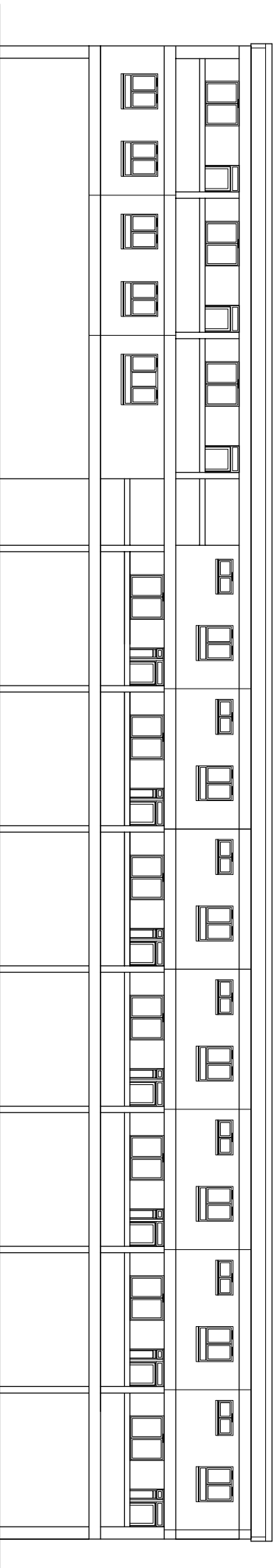
- Barnborough
- Billingley
- Darfield
- Goldthorpe
- Hickleton
- Ravenscar
- Thurnscope
- Trimdon



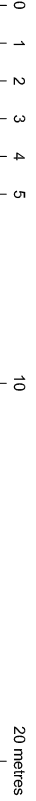
MEXBOROUGH



WARMSWORTH



THE MARR



REVISION	DATE

Do not scale this drawing.  
All dimensions to be checked by the Contractor before construction proceeds.  
© Randall Shaw Billingham

**RANDALL SHAW BILLINGHAM**  
Architects Energy Consultants Planners  
54 Harcombe Road London N16 0SA  
e-mail: rsh@randallshaw.co.uk  
tel: 020 7254 7472

JOB TITLE

CAMDEN MAJOR REPAIRS

DWG TITLE

CURNOCK STREET ESTATE  
ELEVATIONS AS EXISTING  
SHEET 1 OF 3

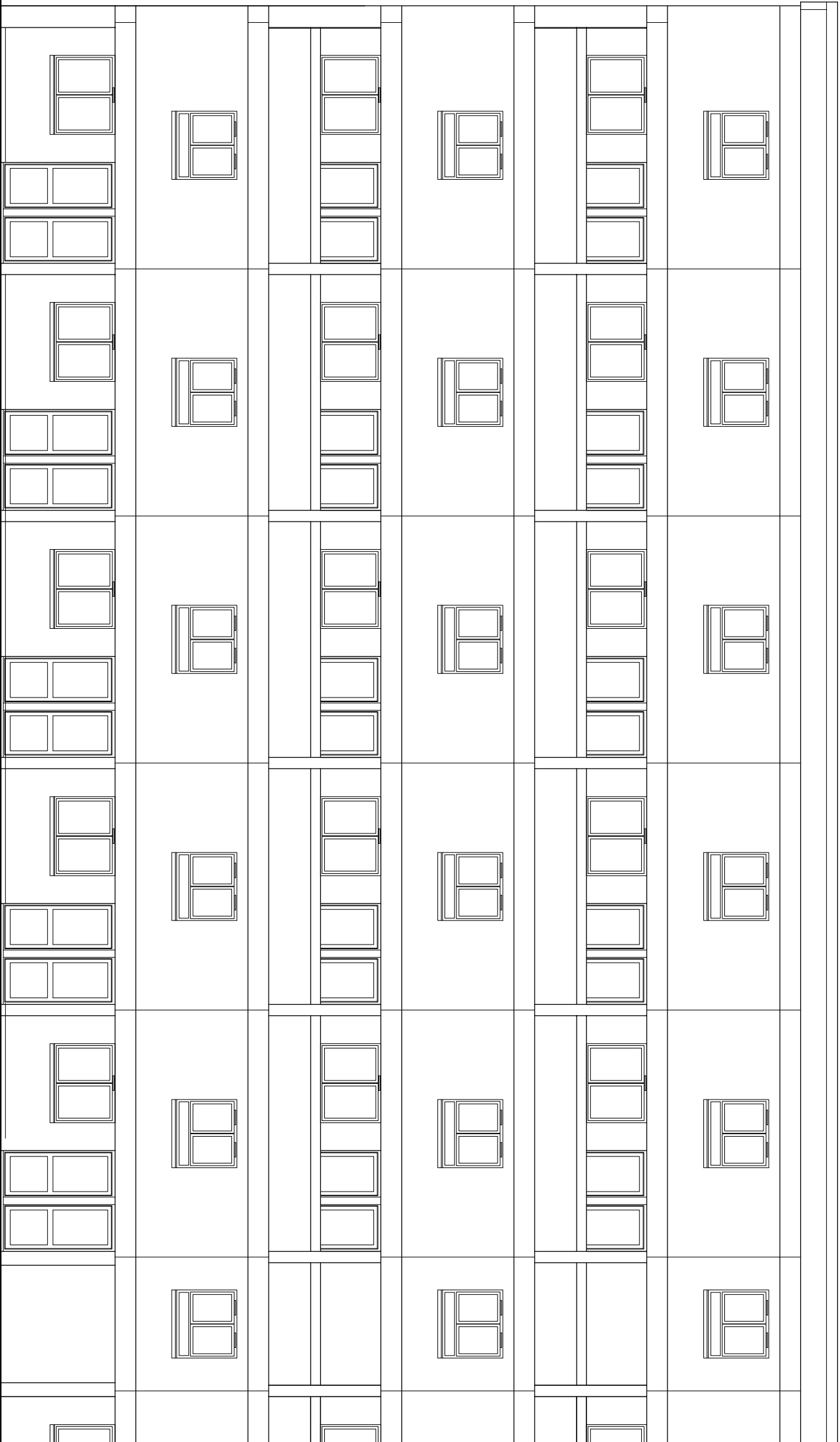
SCALE 1:200 @ A3 DWG bs

DATE 07/16 CHK kr

DWG NO 254/21 REV

Existing windows and front entrance doors double-glazed with aluminium frames, polyester powder coated White.

Access elevations drawn.



**MEXBOROUGH**

Do not scale this drawing.  
All dimensions to be checked by the Contractor before construction proceeds.  
© Randall Shaw Billingham

**RANDALL SHAW BILLINGHAM**

Acoustic Energy Consultants Planners  
54 Harcombe Road London N16 0SA  
e-mail : [rsb@randallshaw.co.uk](mailto:rsb@randallshaw.co.uk)  
tel : 020 7254 7472

JOB TITLE

CAMDEN MAJOR REPAIRS

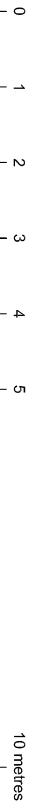
DWG TITLE

CURNOCK STREET ESTATE  
ELEVATIONS AS EXISTING  
SHEET 2 OF 3

SCALE 1:100 @ A3 DWG bs

DATE 05/16 CHK kr

DWG NO 254/22 REV



NOTES

Existing windows and front entrance doors double-glazed with aluminium frames, polyester powder coated White.

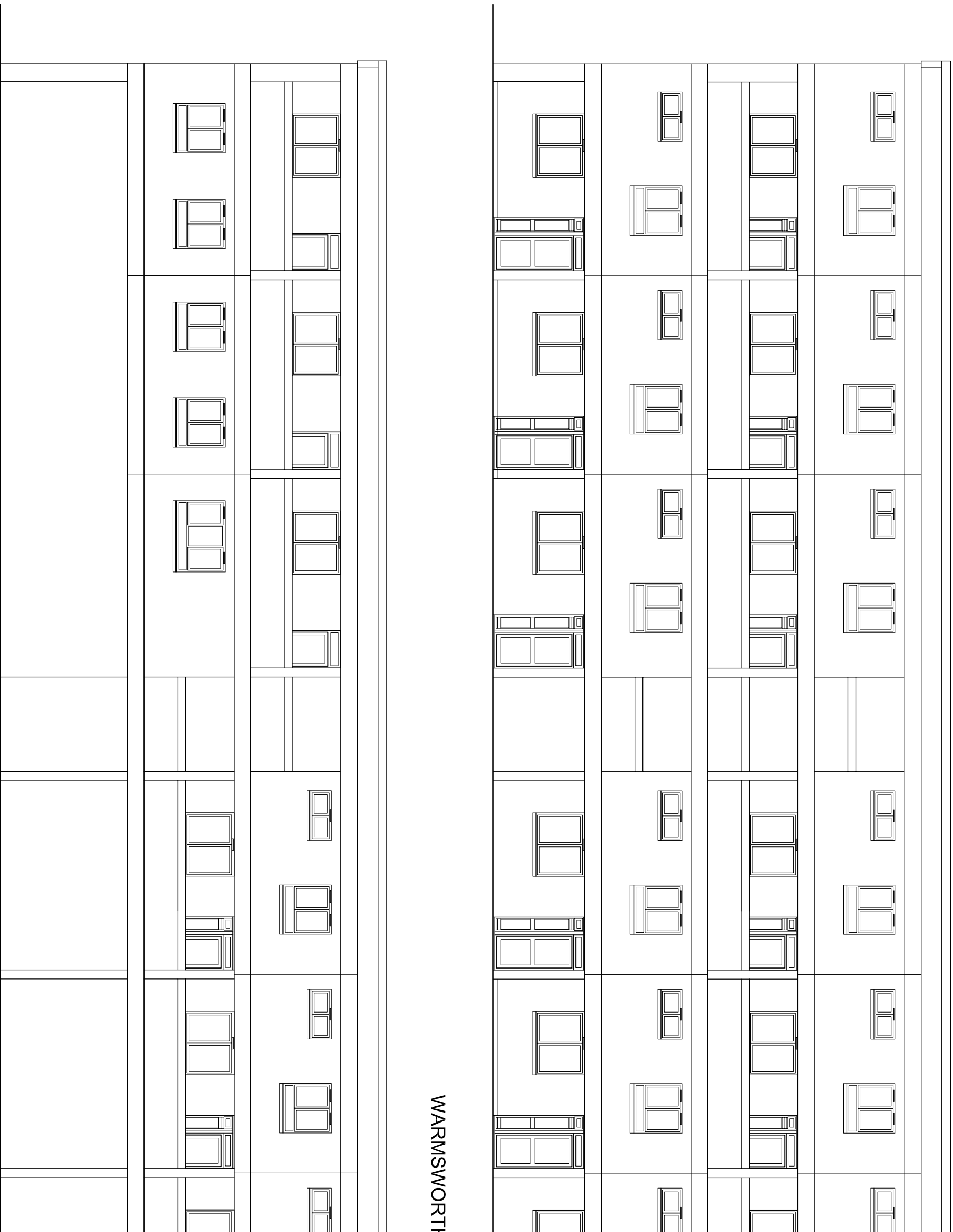
Access elevations drawn.

The elevations of the following blocks are identical in terms of detailing to Warmsworth -

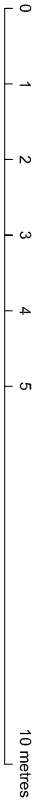
- Barnborough
- Billingley
- Darfield
- Goldthorpe
- Hickleton
- Ravenscar
- Thunscoe
- Trimdon

REVISION	DATE

WARMSWORTH



THE MARR



Do not scale this drawing. All dimensions to be checked by the Contractor before construction proceeds.  
© Randall Shaw Billingham

**RANDALL SHAW BILLINGHAM**  
Architects Energy Consultants Planners  
54 Harcombe Road London N16 0SA  
e-mail : [rsb@randallshaw.co.uk](mailto:rsb@randallshaw.co.uk)  
tel : 020 7254 7472

JOB TITLE  
CAMDEN MAJOR REPAIRS

DWG TITLE  
CURNOCK STREET ESTATE  
ELEVATIONS AS EXISTING  
SHEET 2 OF 3

SCALE 1:100 @ A3 DWG bs  
DATE 05/16 CHK kr  
DWG NO 254/23 REV

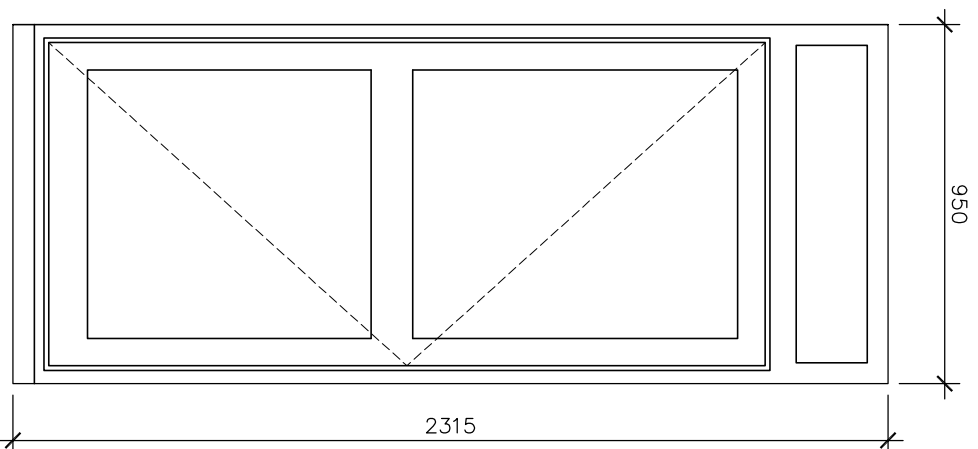
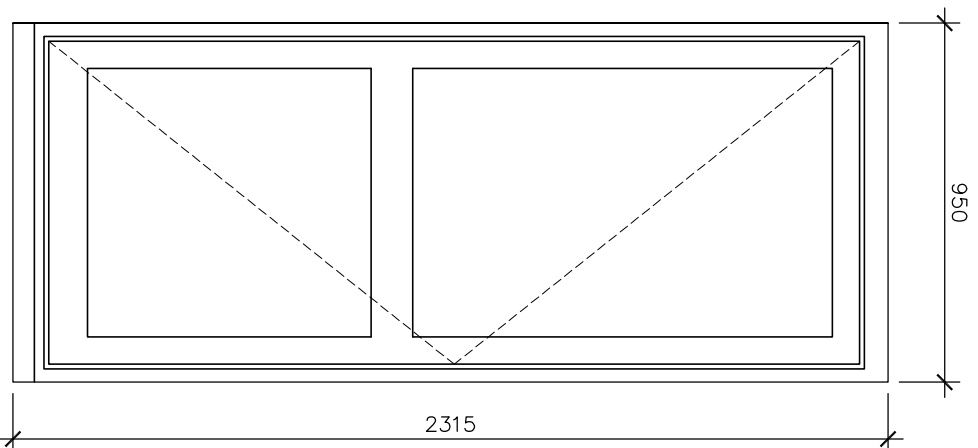
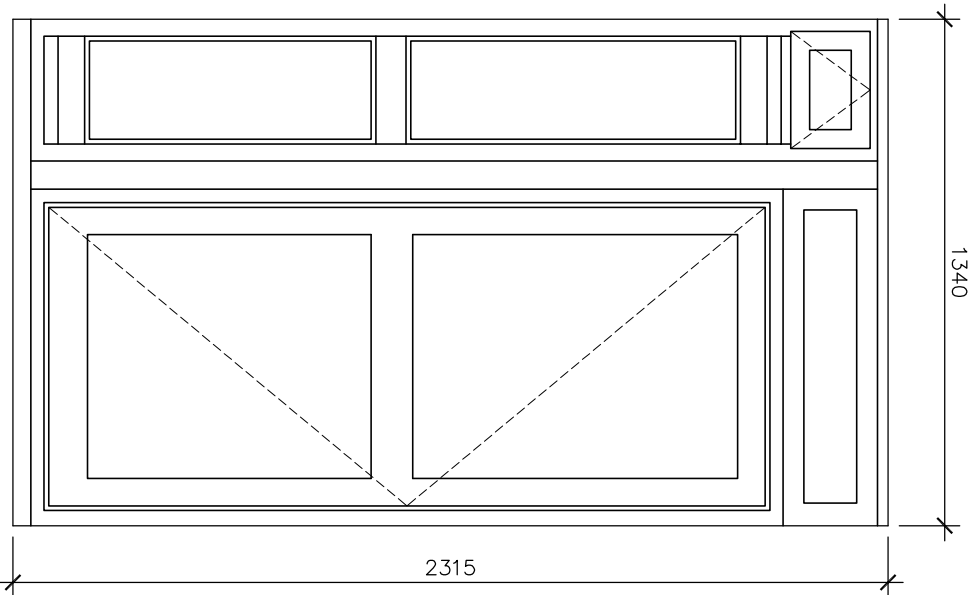
Existing windows and front entrance doors double-glazed with aluminium frames, polyester powder coated White.

No access to D3 - dimensions estimated only, accurate to + or - 50mm.

Elevations from outside.

Dimensions are brick opening sizes, measured externally.

Dimensions to be taken on site before pricing + construction.



### D1

No. :  
 Location : Entrance elevs - G + 2nd  
 Material : Aluminium, powder coated White  
 Opening : Inward opening door  
 Glazing : Double glazed  
 Glass : Frosted

### D2

No. :  
 Location : Mexborough  
 Material : Aluminium, powder coated White  
 Opening : Inward opening door  
 Glazing : Double glazed  
 Glass : Frosted

### D3

No. :  
 Location : The Marr  
 Material : Aluminium, powder coated White  
 Opening : Inward opening door  
 Glazing : Double glazed  
 Glass : Frosted

Do not scale this drawing.  
 All dimensions to be checked by the Contractor before construction proceeds.  
 © Randall Shaw Billingham

RANDALL SHAW BILLINGHAM  
 Architects Energy Consultants Planners  
 54 Harcombe Road London N16 0SA  
 e-mail : rsh@randallshaw.co.uk  
 tel : 020 7254 7472

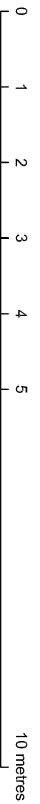
JOB TITLE  
 CAMDEN MAJOR REPAIRS

DWG TITLE  
 CURNOCK STREET ESTATE  
 FLAT ENTRANCE DOORS  
 AS EXISTING

SCALE 1:100 @ A3 DWG bs

DATE 05/16 CHK kr

DWG NO 254/24 REV.



NOTES

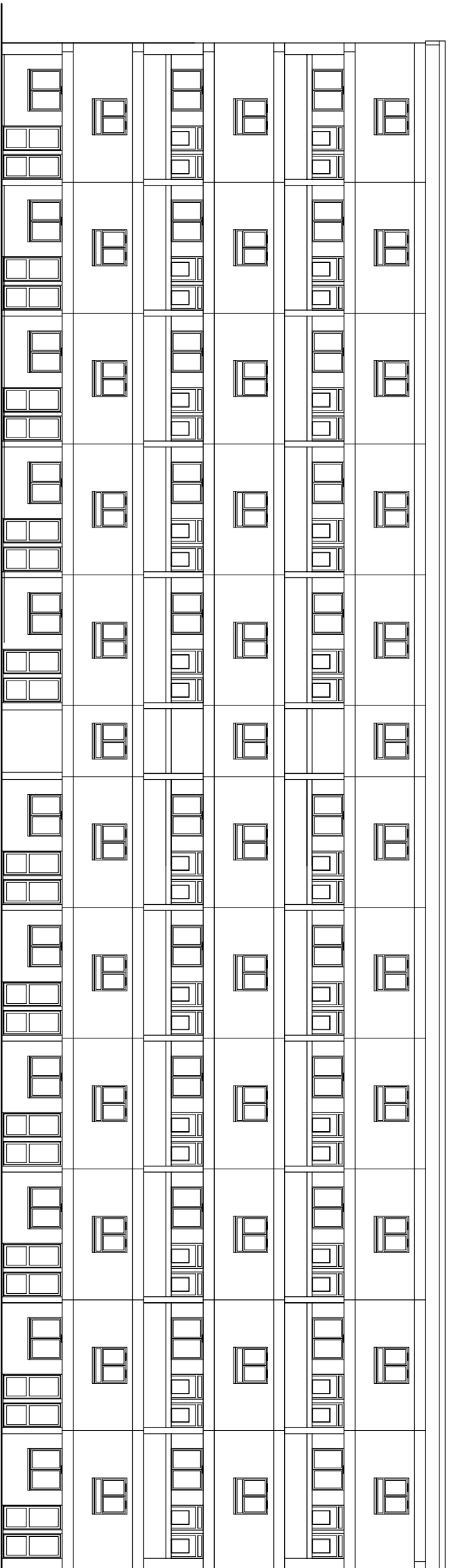
Proposed timber entrance doors and frames above ground level - double-glazed, painted (door colours to be selected), with white frames.

Existing windows and front entrance doors at ground level retained - double-glazed with aluminium frames, polyester powder coated white.

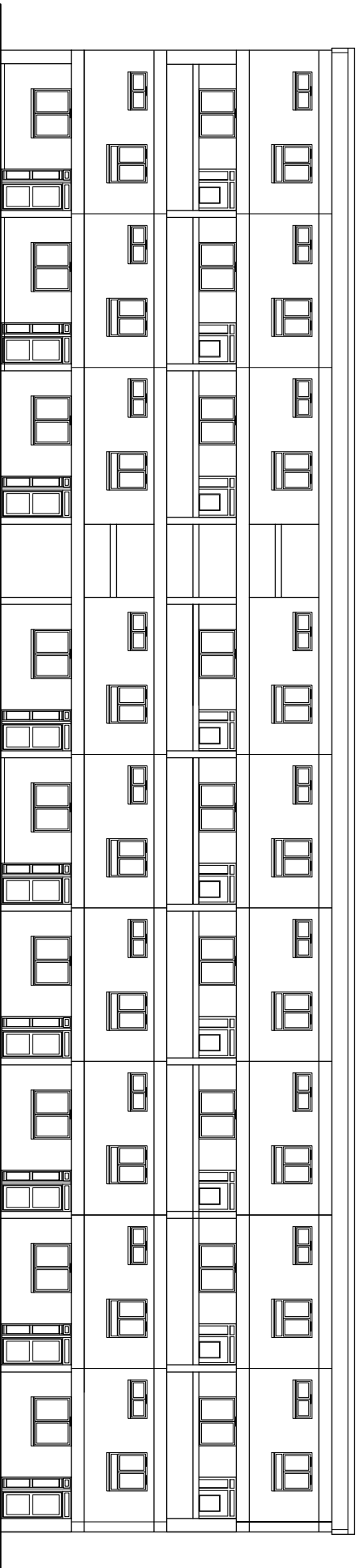
Access elevations drawn.

The elevations of the following blocks are identical in terms of detailing to Warmsworth -

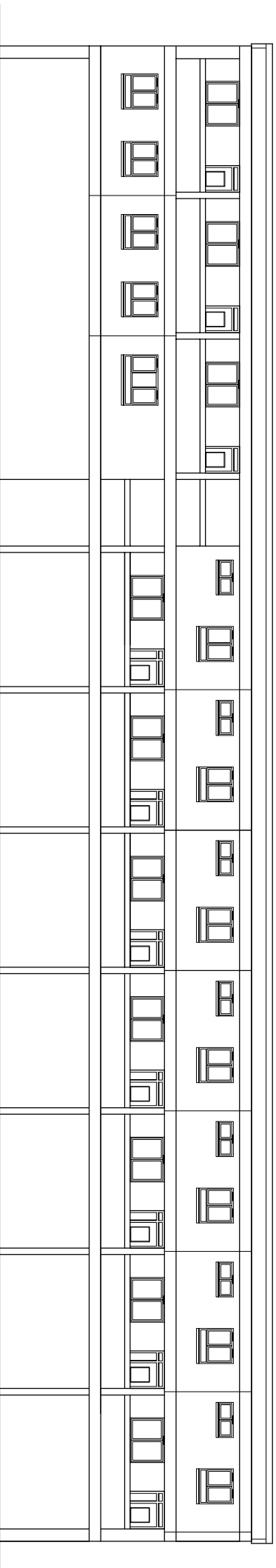
- Barnborough
- Billingley
- Darfield
- Goldthorpe
- Hickleton
- Ravenscar
- Thunscoe
- Trimdon



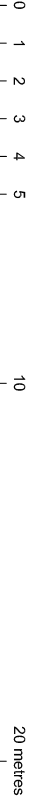
MEXBOROUGH



WARMSWORTH



THE MARR



REVISION	DATE

Do not scale this drawing.  
All dimensions to be checked by the Contractor before construction proceeds.  
© Randall Shaw Billingham

**RANDALL SHAW BILLINGHAM**  
Architects Energy Consultants Planners  
54 Harcombe Road London N16 0SA  
e-mail: rsh@randallshaw.co.uk  
tel: 020 7254 7472

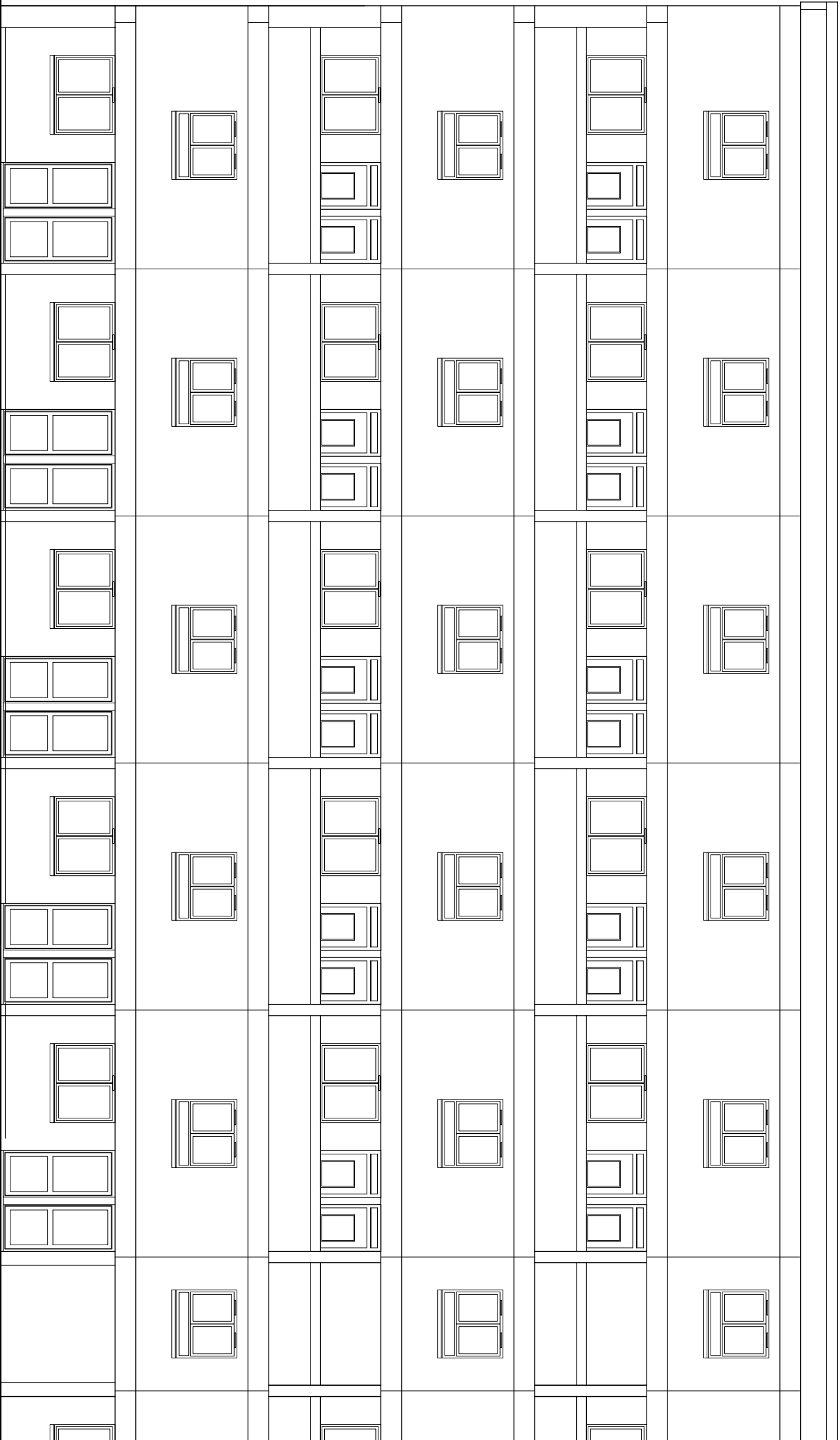
JOB TITLE  
CAMDEN MAJOR REPAIRS

DWG TITLE  
CURNOCK STREET ESTATE  
ELEVATIONS AS PROPOSED  
SHEET 1 OF 3

SCALE 1:200 @ A3 DWG bs  
DATE 07/16 CHK kr  
DWG NO 254/25 REV

Proposed timber entrance doors and frames above ground level - double-glazed, painted (door colours to be selected), with white frames.

Existing windows and front entrance doors at ground level retained - double-glazed with aluminium frames, polyester powder coated white.  
Access elevations drawn.



ENTRANCE  
DOORS  
REPLACED

ENTRANCE  
DOORS  
REPLACED

ENTRANCE  
DOORS  
RETAINED

**MEXBOROUGH**

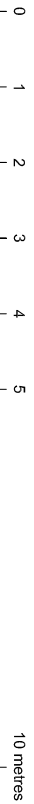
Do not scale this drawing.  
All dimensions to be checked by the Contractor before construction proceeds.  
© Randall Shaw Billingham

**RANDALL SHAW BILLINGHAM**  
Architects Energy Consultants Planners  
54 Harcombe Road London N16 0SA  
e-mail : [rsb@randallshaw.co.uk](mailto:rsb@randallshaw.co.uk)  
tel : 020 7254 7472

JOB TITLE  
**CAMDEN MAJOR REPAIRS**

DWG TITLE  
**CURNOCK STREET ESTATE  
ELEVATIONS AS PROPOSED  
SHEET 2 OF 3**

SCALE 1:100 @ A3 DWG bs  
DATE 05/16 CHK kr  
DWG NO 254/26 REV



Proposed timber entrance doors and frames above ground level - double-glazed, painted (door colours to be selected), with white frames.

Existing windows and front entrance doors at ground level retained - double-glazed with aluminium frames, polyester powder coated white.

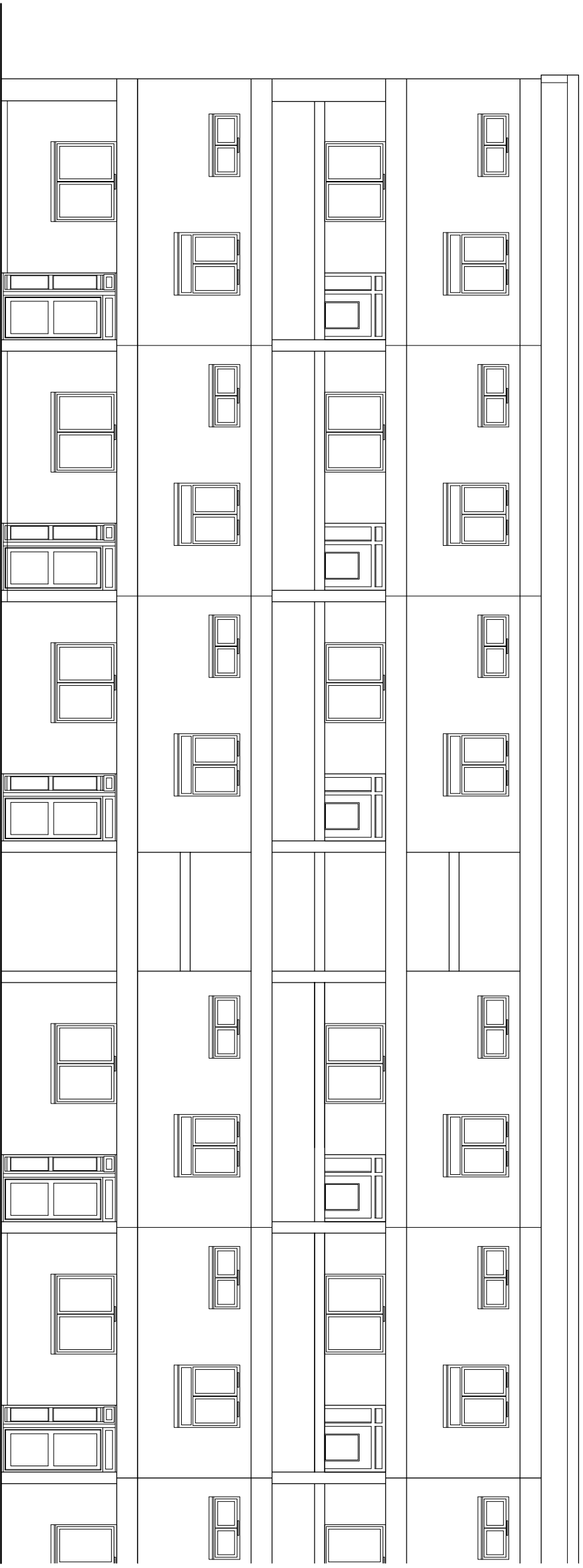
Access elevations drawn.

The elevations of the following blocks are identical in terms of detailing to Warmsworth -

- Barnborough
- Billingley
- Darfield
- Goldthorpe
- Hickleton
- Ravenscar
- Thurscoe
- Trimdon

REVISION	DATE

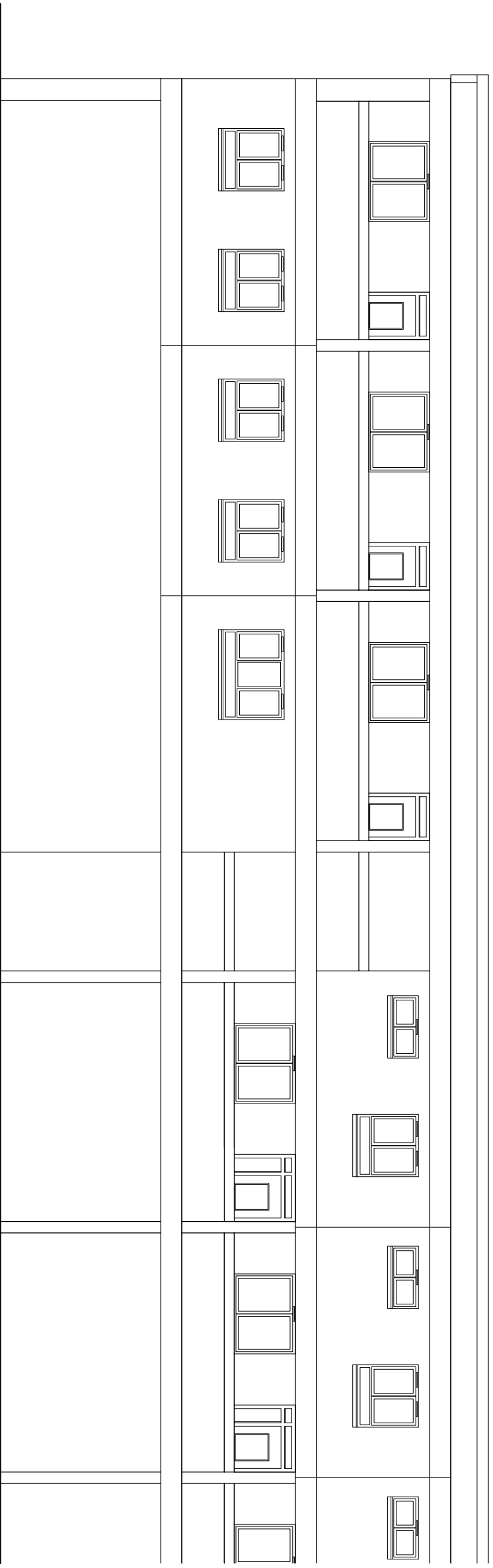
### WARMSWORTH



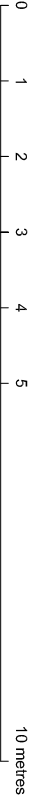
ENTRANCE DOORS RETAINED

ENTRANCE DOORS REPLACED

ENTRANCE DOORS REPLACED



### THE MARR



Do not scale this drawing. All dimensions to be checked by the Contractor before construction proceeds.  
© Randall Shaw Billingham

**RANDALL SHAW BILLINGHAM**  
Architects Energy Consultants Planners  
54 Harcombe Road London N16 0SA  
e-mail: [rsb@randallshaw.co.uk](mailto:rsb@randallshaw.co.uk)  
tel: 020 7254 7472

JOB TITLE  
**CAMDEN MAJOR REPAIRS**

DWG TITLE  
**CURNOCK STREET ESTATE ELEVATIONS AS PROPOSED SHEET 2 OF 3**

SCALE 1:100 @ A3 DWG bs  
DATE 05/16 CHK kr  
DWG NO 254/27 REV

Proposed entrance doors and frames above ground level - solid laminated timber doorleaf, with hardwood frames, with double-glazed vision panels, fanlights and sidelights, all as Multi-Installations drawings 6175/ 17, 18, 19

Existing windows and front entrance doors at ground level retained - double-glazed with aluminium frames, polyester powder coated White.

No access to D3 - dimensions estimated only, accurate to + or - 50mm.

Elevations from outside.

Dimensions are brick opening sizes, measured externally.

Dimensions to be taken on site before pricing + construction.

REVISION	DATE

Do not scale this drawing.  
All dimensions to be checked by the Contractor before construction proceeds.  
© Randall Shaw Billingham

**RANDALL SHAW BILLINGHAM**  
Architects Energy Consultants Planners  
54 Harcombe Road London N16 0SA  
e-mail : rsh@randallshaw.co.uk  
tel : 020 7254 7472

JOB TITLE

CAMDEN MAJOR REPAIRS

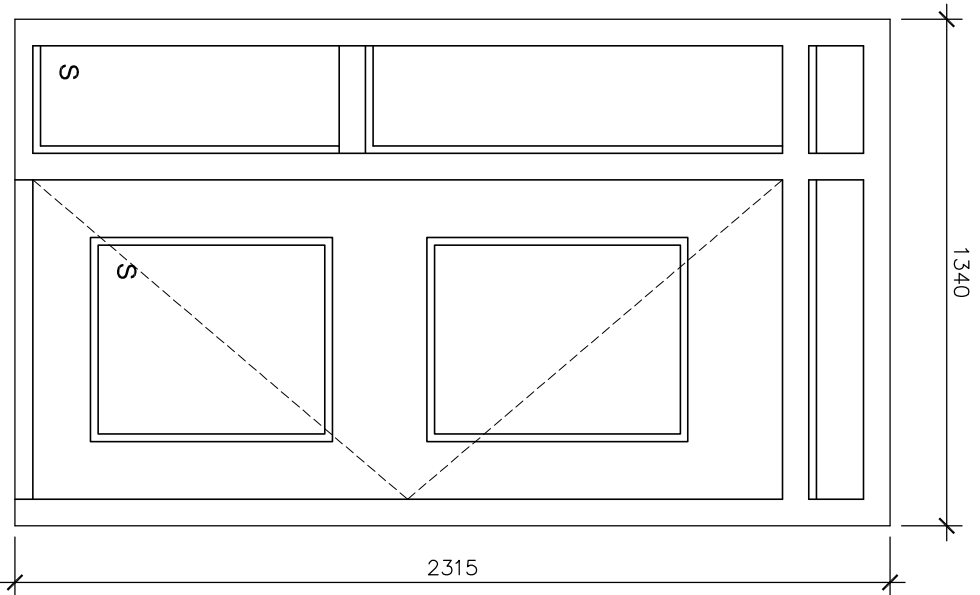
DWG TITLE

CURNOCK STREET ESTATE  
FLAT ENTRANCE DOORS  
AS PROPOSED

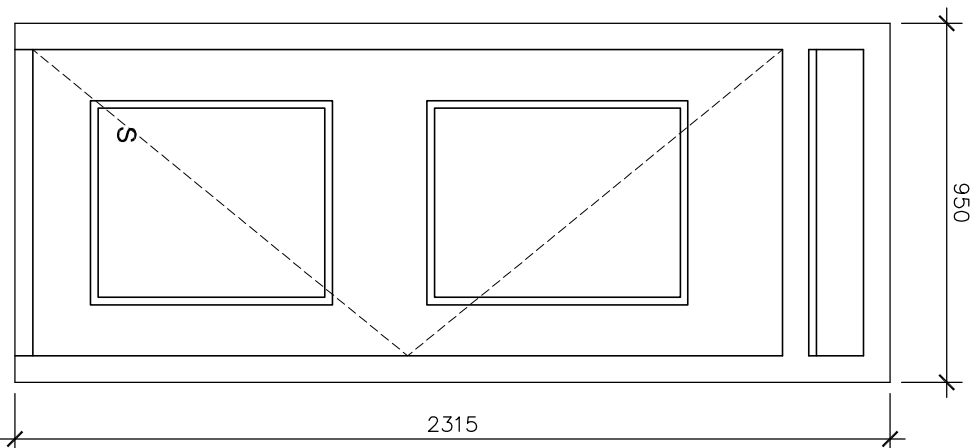
SCALE 1:100 @ A3 DWG bs

DATE 05/ 16 CHK. kr

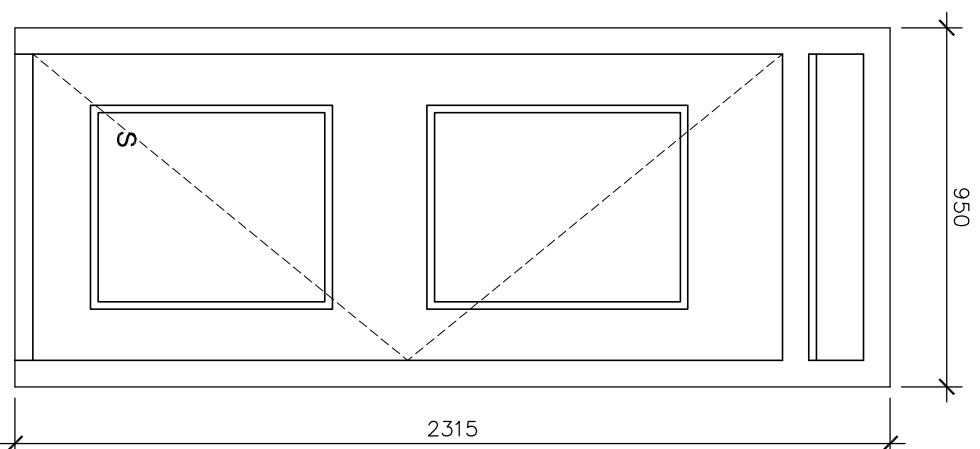
DWG NO. 254/ 28 REV.



**D1**  
No. :  
Location : Entrance elevs - 2nd  
Material : Timber, frame painted White  
Door colour to be selected  
Opening : Inward opening door  
Glazing : Double glazed  
Glass : Frosted  
Note : Solid panels marked S



**D2**  
No. :  
Location : Mexborough  
Material : Timber, frame painted White  
Door colour to be selected  
Opening : Inward opening door  
Glazing : Double glazed  
Glass : Frosted  
Note : Solid panel at bottom of door



**D3**  
No. :  
Location : The Marr  
Material : Timber, frame painted White  
Door colour to be selected  
Opening : Inward opening door  
Glazing : Double glazed  
Glass : Frosted  
Note : Solid panel at bottom of door

