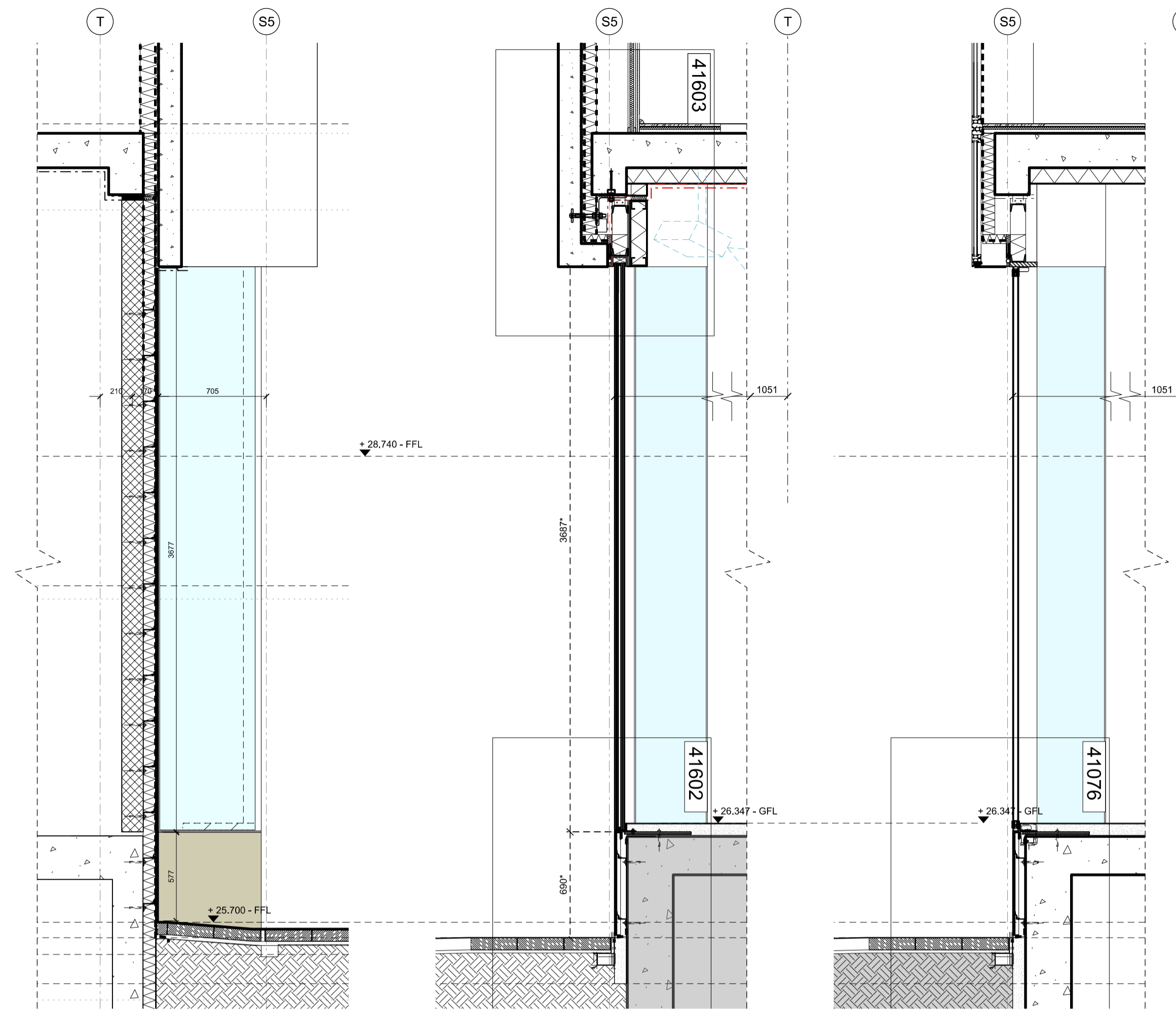


West Elevation

01 600-15465



Elevation

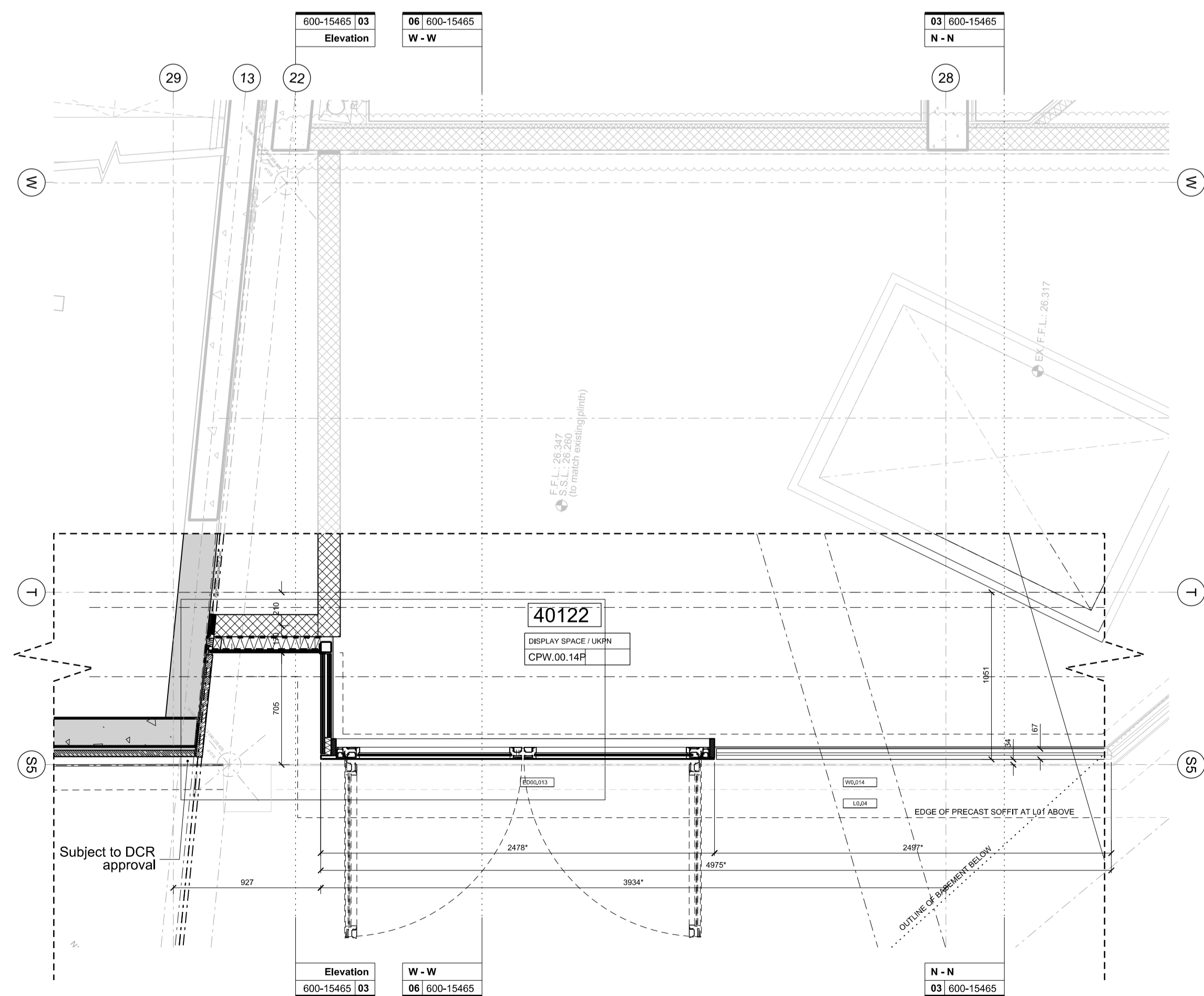
03 600-15465

Section N-N

05 600-15465

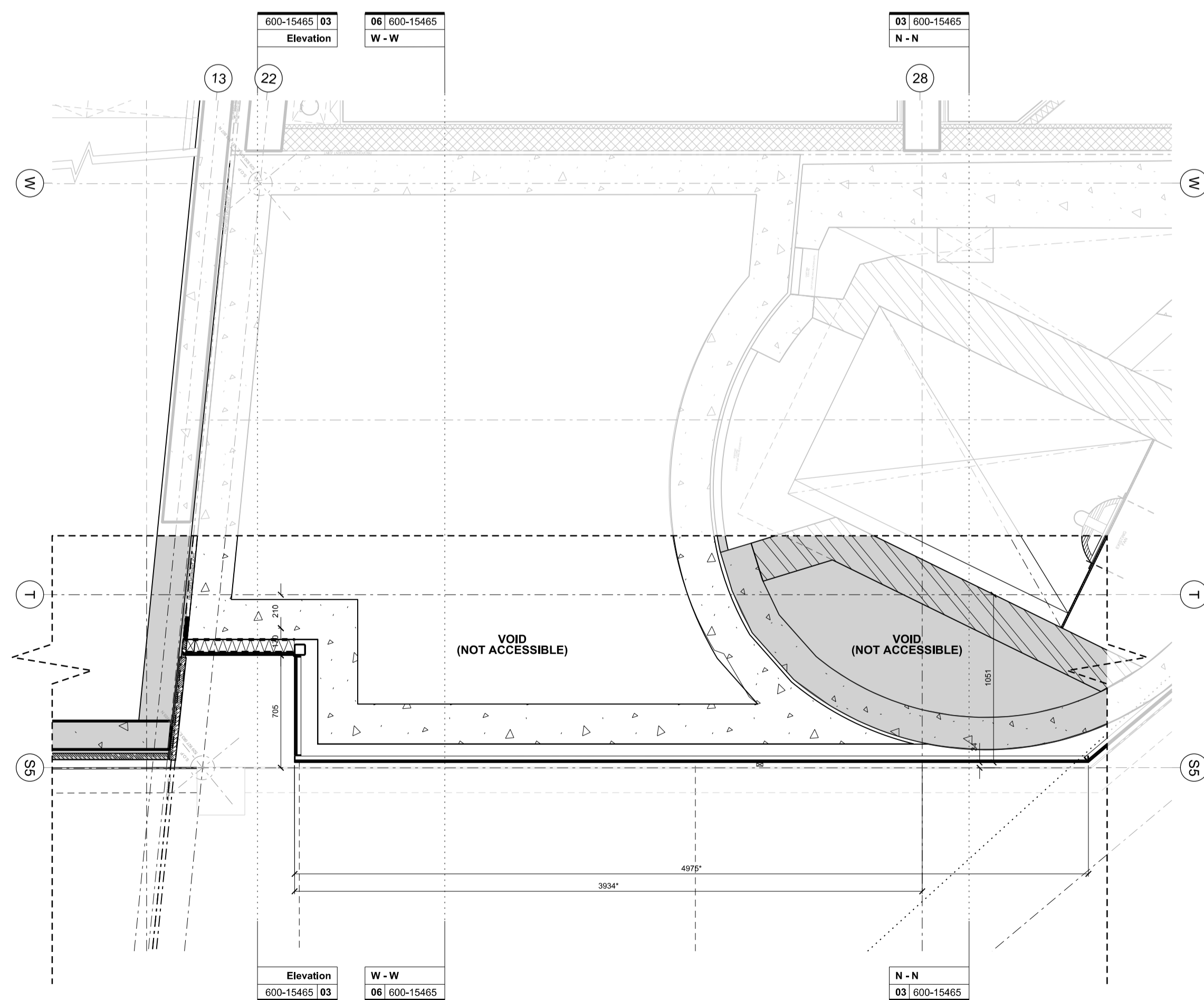
Section W-W

06 600-15465



Plan

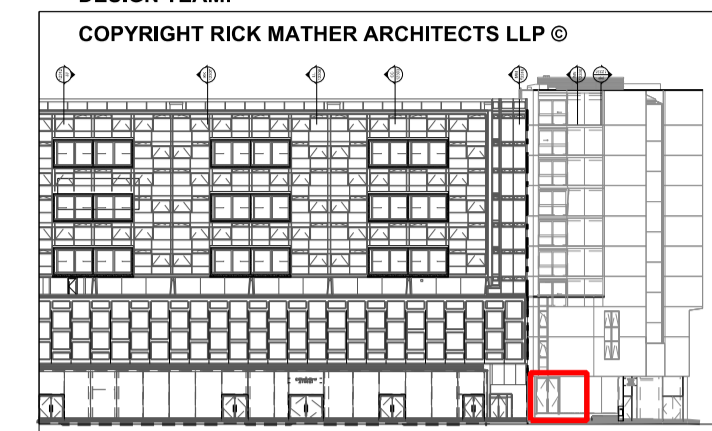
02 600-15465



Plan (UKPN Plinth)

04 600-15465

NOTES  
DO NOT SCALE FROM THIS DRAWING.  
CONTRACTOR TO CHECK ALL DIMENSIONS ON SITE.  
ANY DISCREPANCIES TO BE REPORTED TO THE ARCHITECT IMMEDIATELY.  
THE SURVEY INFORMATION CONTAINED IN THIS DRAWING WAS PROVIDED BY PLOWMAN CRAVEN LTD AND BMCE LTD FOR FURTHER DETAIL PLEASE REQUEST AS APPROPRIATE.  
CONSTRUCTION DETAILS SUBJECT TO DISCHARGE OF PLANNING CONDITIONS  
ASBESTOS AND ANY DANGEROUS OR HAZARDOUS SUBSTANCES: AS MAIN CONTRACT PRELIMINARIES - CLAUSES A34/370 & A34/371A.  
THIS DRAWING HAS BEEN ISSUED PRIOR TO RECEIPT OF THE PRE-CONSTRUCTION INFORMATION REQUIRED BY THE DESIGN TEAM.



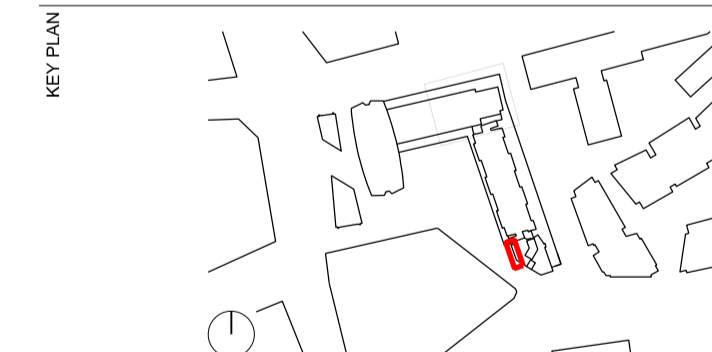
Location Elevation - West

KEY  
\* ALL DIMENSIONS SHOWN ARE NOTIONAL PENDING CONFIRMATION FROM DETAILED SURVEY BY OTHERS.

■ DENOTES EXISTING  
■ H31/117A - ALUMINIUM CLADDING COMPONENTS

REVISIONS

REV	DATE	DESCRIPTION
PL1	19.07.16	PLANNING CONDITION SUBMISSION 3A-CPW



STATUS **PLANNING**

**RICK MATHER ARCHITECTS ©**

123 Camden High Street London NW1 7JR  
T: 020 7284 1727 F: 020 7287 7626  
info@rickmather.com www.rickmather.com

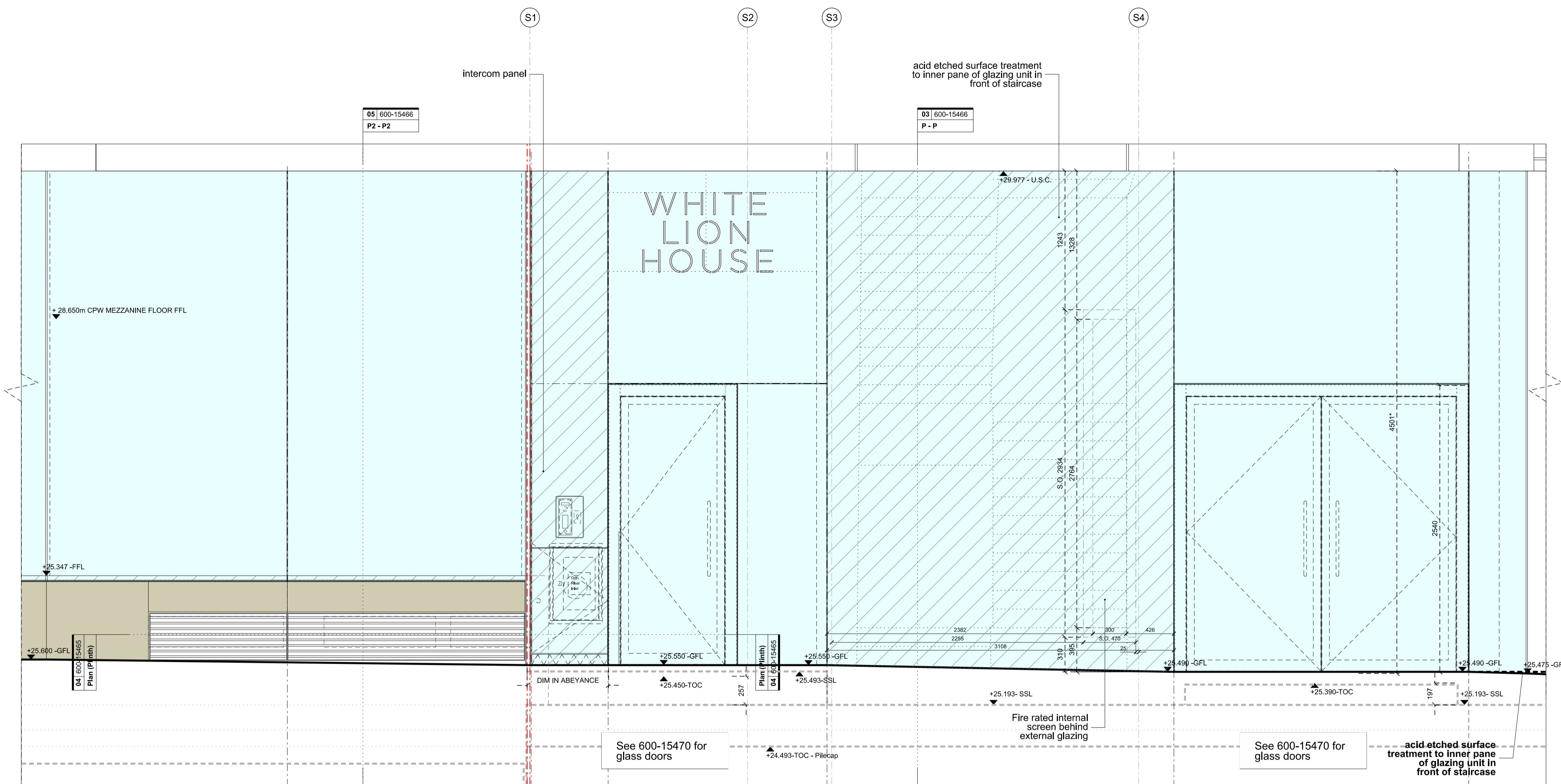
JOB  
**Centre Point**  
101-103 New Oxford Street  
London, WC1A 1DD

TITLE  
**Components Drawing**  
Glazing - R09b / Display Space/ UKPN  
W0.014 / W0.015

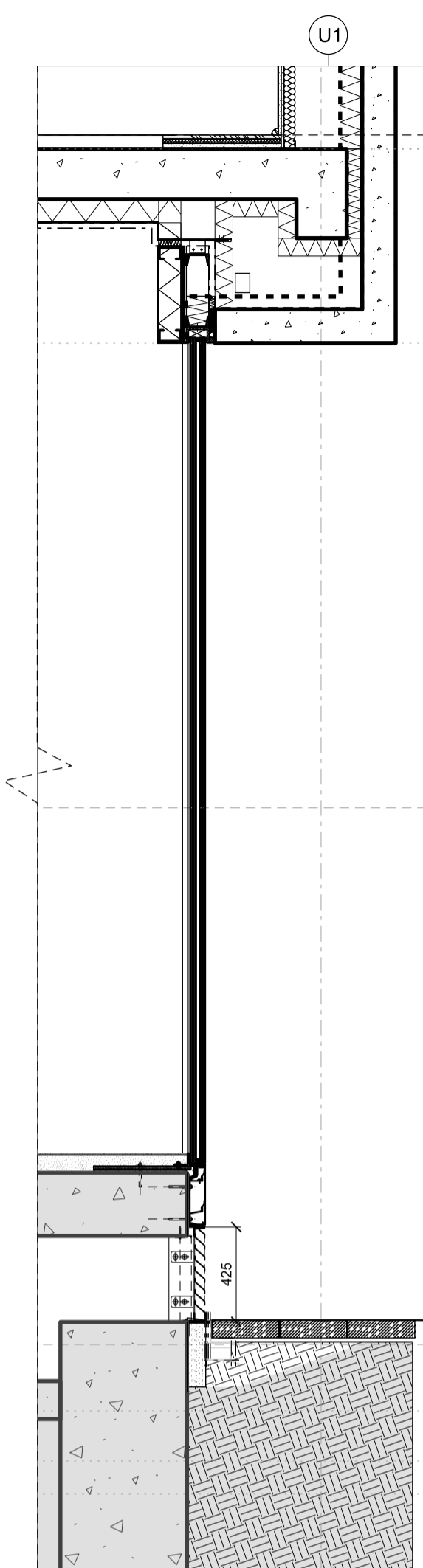
DRAWN	YWG	JOB #	DRG #	REV
		<b>600</b>	<b>15465-CPW</b>	<b>PL1</b>

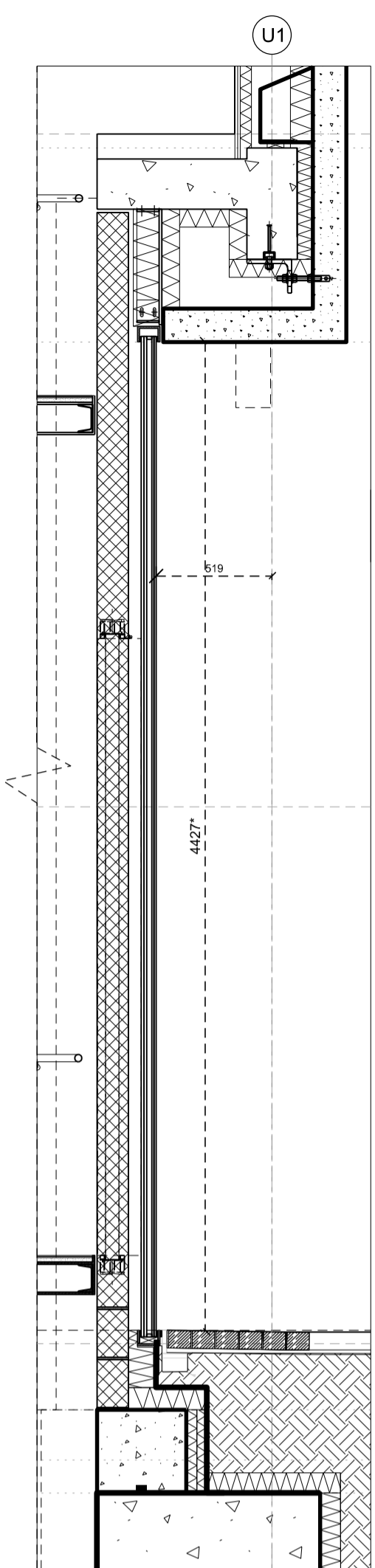
CHECKED	MO	SCALE@A1	SIZE	DATE	REV/DATE
		1:25	A1	JUN 15	19.07.16



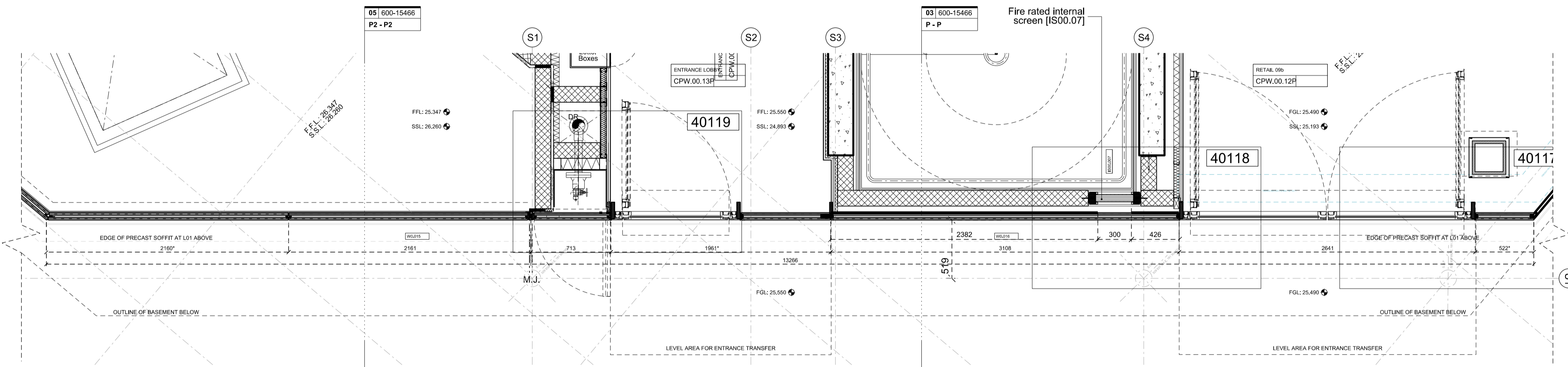
South West Elevation  
01 600-15466



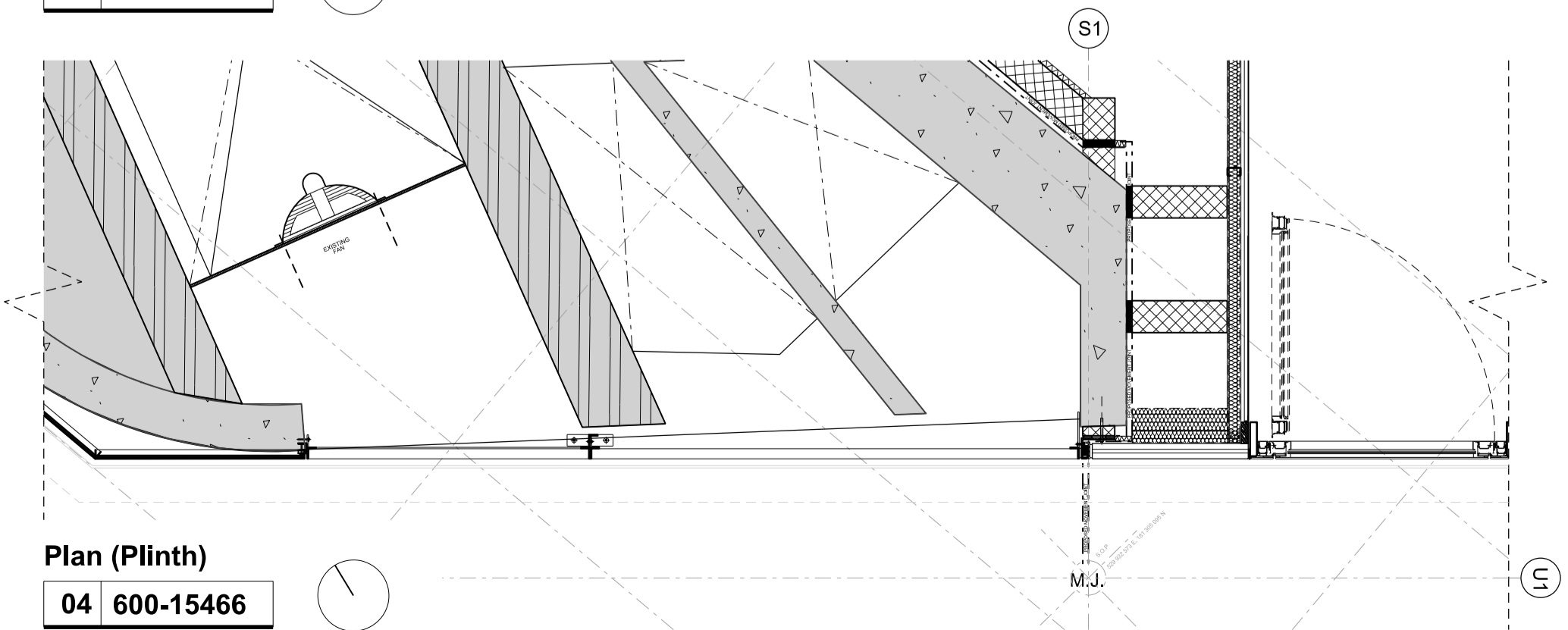
Section P2 - P2  
05 600-15466



Section P - P  
03 600-15466

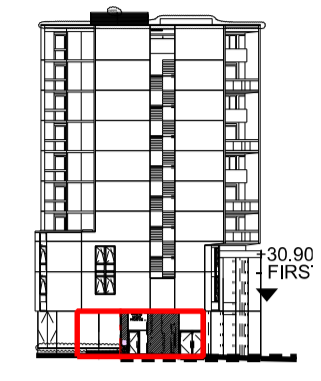


Plan  
02 600-15466



Plan (Plinth)  
04 600-15466

NOTES  
DO NOT SCALE FROM THIS DRAWING.  
CONTRACTOR TO CHECK ALL DIMENSIONS ON SITE.  
ANY DISCREPANCIES TO BE REPORTED TO THE ARCHITECT IMMEDIATELY.  
THE SURVEY INFORMATION CONTAINED IN THIS DRAWING WAS PROVIDED BY PLOWMAN CRAVEN LTD AND BMCE LTD FOR FURTHER DETAIL PLEASE REQUEST AS APPROPRIATE.  
CONSTRUCTION DETAILS SUBJECT TO DISCHARGE OF PLANNING CONDITIONS  
ASBESTOS AND ANY DANGEROUS OR HAZARDOUS SUBSTANCES: AS MAIN CONTRACT PRELIMINARIES - CLAUSES A34/37B & A34/37IA.  
THIS DRAWING HAS BEEN ISSUED PRIOR TO RECEIPT OF THE PRE-CONSTRUCTION INFORMATION REQUIRED BY THE DESIGN TEAM.  
COPYRIGHT RICK MATHER ARCHITECTS LLP ©

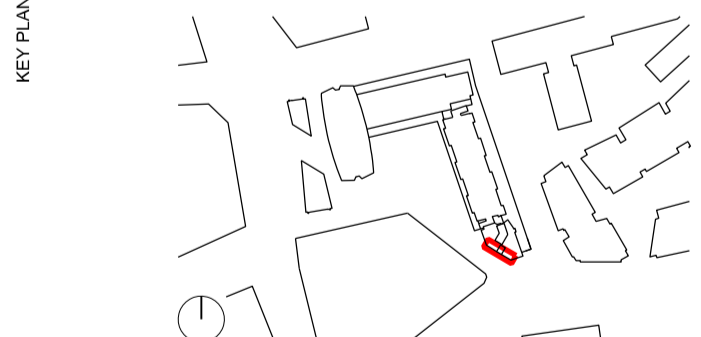


Location Elevation - South West

KEY  
\* ALL DIMENSIONS SHOWN ARE NOTIONAL PENDING CONFIRMATION FROM DETAILED SURVEY BY OTHERS.  
DENOTES EXISTING  
H31/117A - ALUMINIUM CLADDING COMPONENTS

REVISIONS

REV	DATE	DESCRIPTION
PL1	19.07.16	PLANNING CONDITION SUBMISSION 3A-CPW



STATUS  
**PLANNING**

**RICK MATHER ARCHITECTS ©**

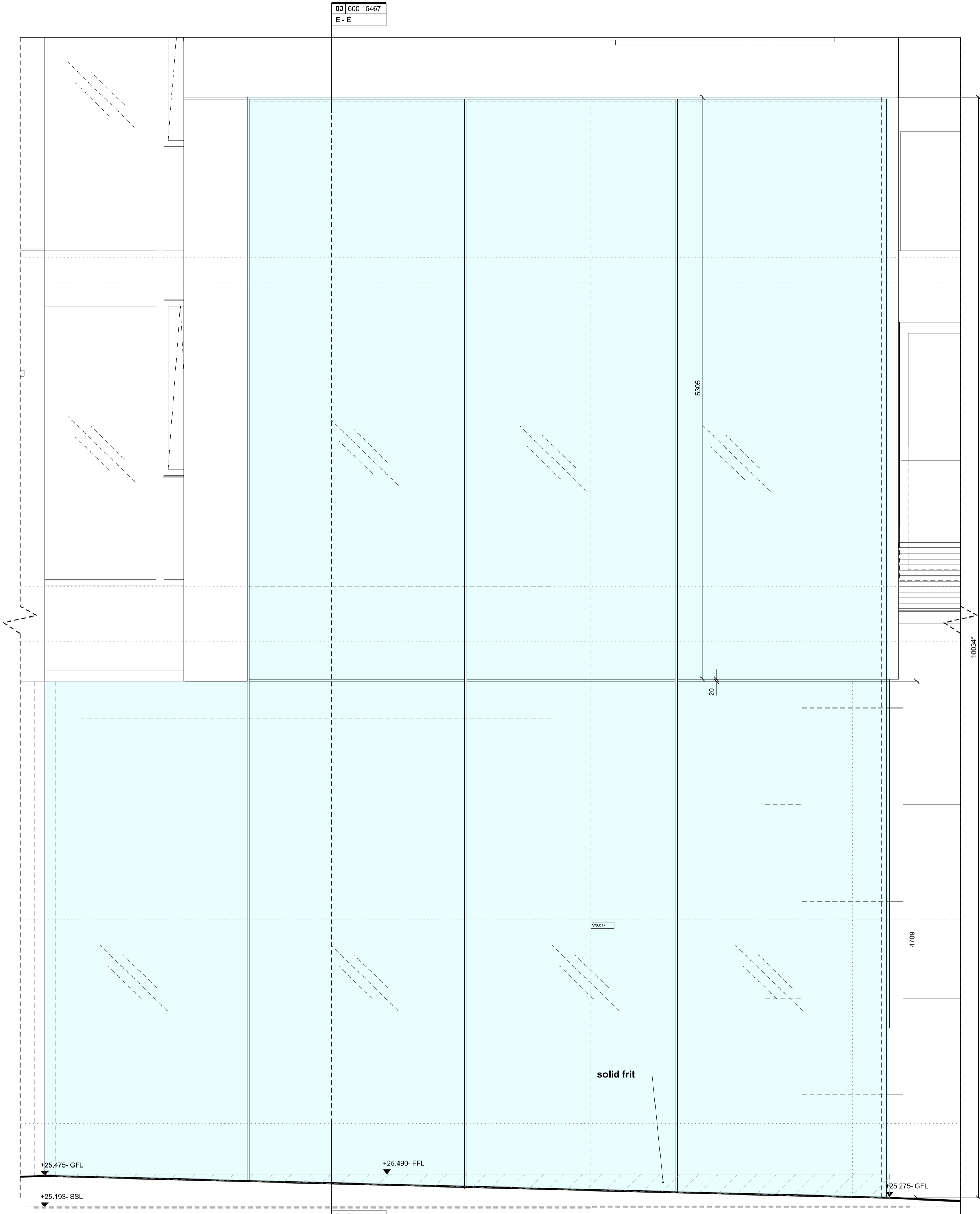
123 Camden High Street London NW1 7JR  
T: 020 7284 1727 F: 020 7287 7626  
info@rickmather.com www.rickmather.com

JOB  
**Centre Point**  
101-103 New Oxford Street  
London, WC1A 1DD

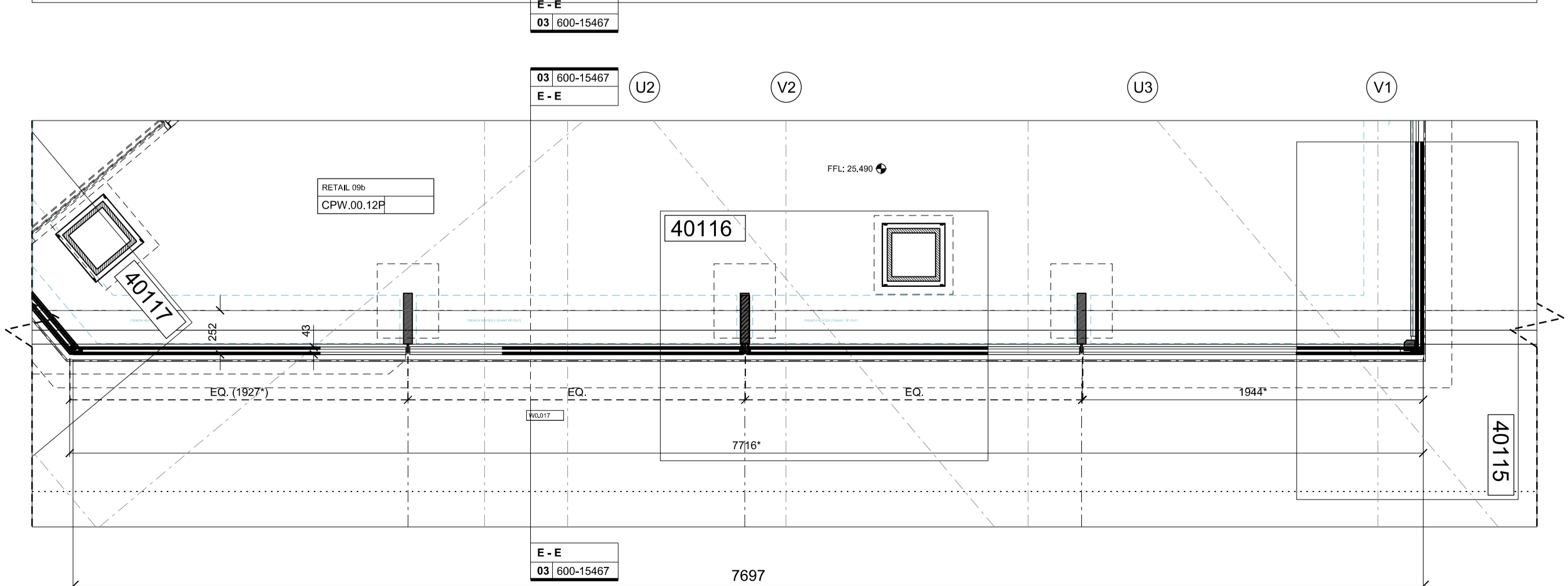
TITLE  
**Components Drawing**  
Glazing - R09b / Display Space / Entrance Lobby  
W0.016

DRAWN	JOB #	DRG #	REV
YWG	600	15466-CPW	PL1

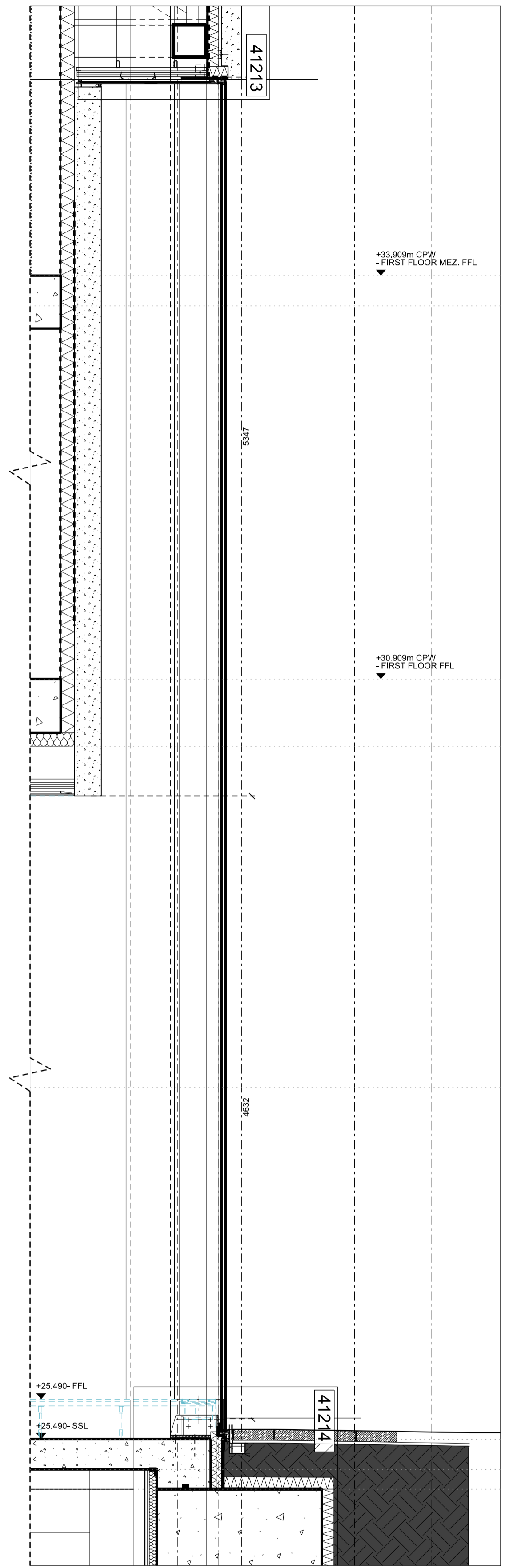
CHECKED	SCALE@A1	SIZE	DATE	REV/DATE
MO	1:25	A1	JUN 15	19.07.16



**W0.017- South East Elevation**  
01 | 600-15467



**W0.017- Plan**  
02 | 600-15467



**W0.017- Section E - E**  
03 | 600-15467

**NOTES**  
DO NOT SCALE FROM THIS DRAWING. CONTRACTOR TO CHECK ALL DIMENSIONS ON SITE. ANY DISCREPANCIES TO BE REPORTED TO THE ARCHITECT IMMEDIATELY.

THE SURVEY INFORMATION CONTAINED IN THIS DRAWING WAS PROVIDED BY PLOWMAN CRAVEN LTD AND BMCE LTD FOR FURTHER DETAIL. PLEASE REQUEST AS APPROPRIATE.

CONSTRUCTION DETAILS SUBJECT TO DISCHARGE OF PLANNING CONDITIONS

ASBESTOS AND ANY DANGEROUS OR HAZARDOUS SUBSTANCES: AS MAIN CONTRACT PRELIMINARIES - CLAUSES A34/370 & A34/371A

THIS DRAWING HAS BEEN ISSUED PRIOR TO RECEIPT OF THE PRE-CONSTRUCTION INFORMATION REQUIRED BY THE DESIGN TEAM.

COPYRIGHT RICK MATHER ARCHITECTS LLP ©

Location Elevation - South West

**KEY**

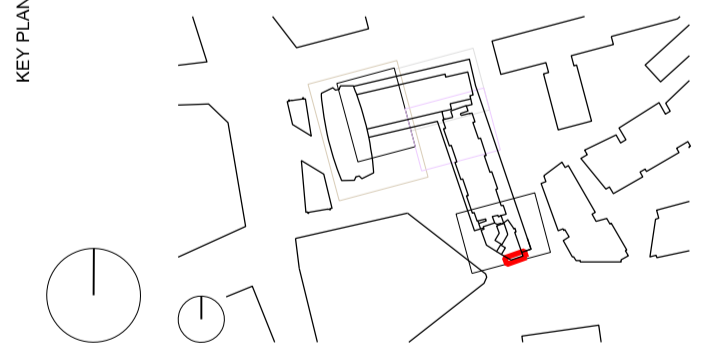
- \* ALL DIMENSIONS SHOWN ARE NOTIONAL PENDING CONFIRMATION FROM DETAILED SURVEY BY OTHERS.
- DENOTES EXISTING

**REVISIONS**

REV	DATE	DESCRIPTION
PL1	19.07.16	PLANNING CONDITION SUBMISSION 3A-CPW

**CONTRACTOR**  
Brookfield MULTIPLEX

**CLIENT**  
BM



**STATUS**  
PLANNING

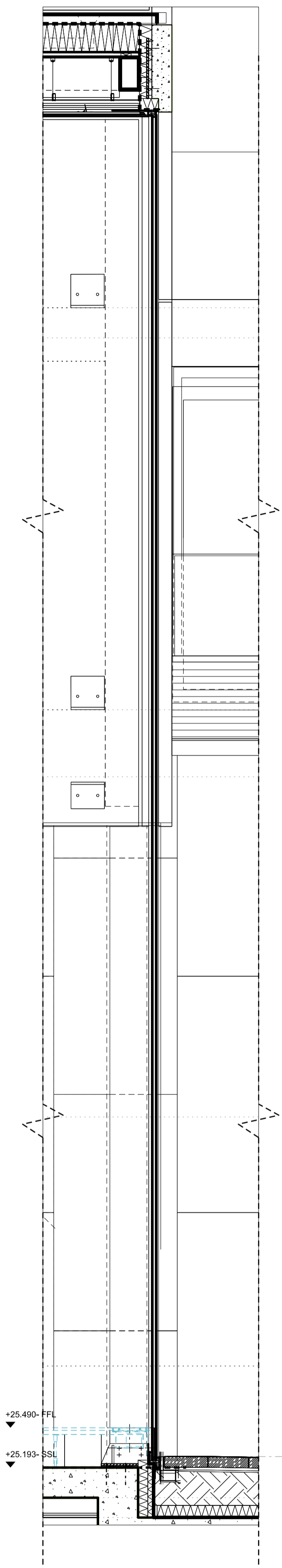
**RICK MATHER ARCHITECTS ©**  
123 Camden High Street London NW1 7JR  
T: 020 7284 1727 F: 020 7267 7626  
info@rickmather.com www.rickmather.com

**JOB**  
Centre Point  
101-103 New Oxford Street  
London, WC1A 1DD

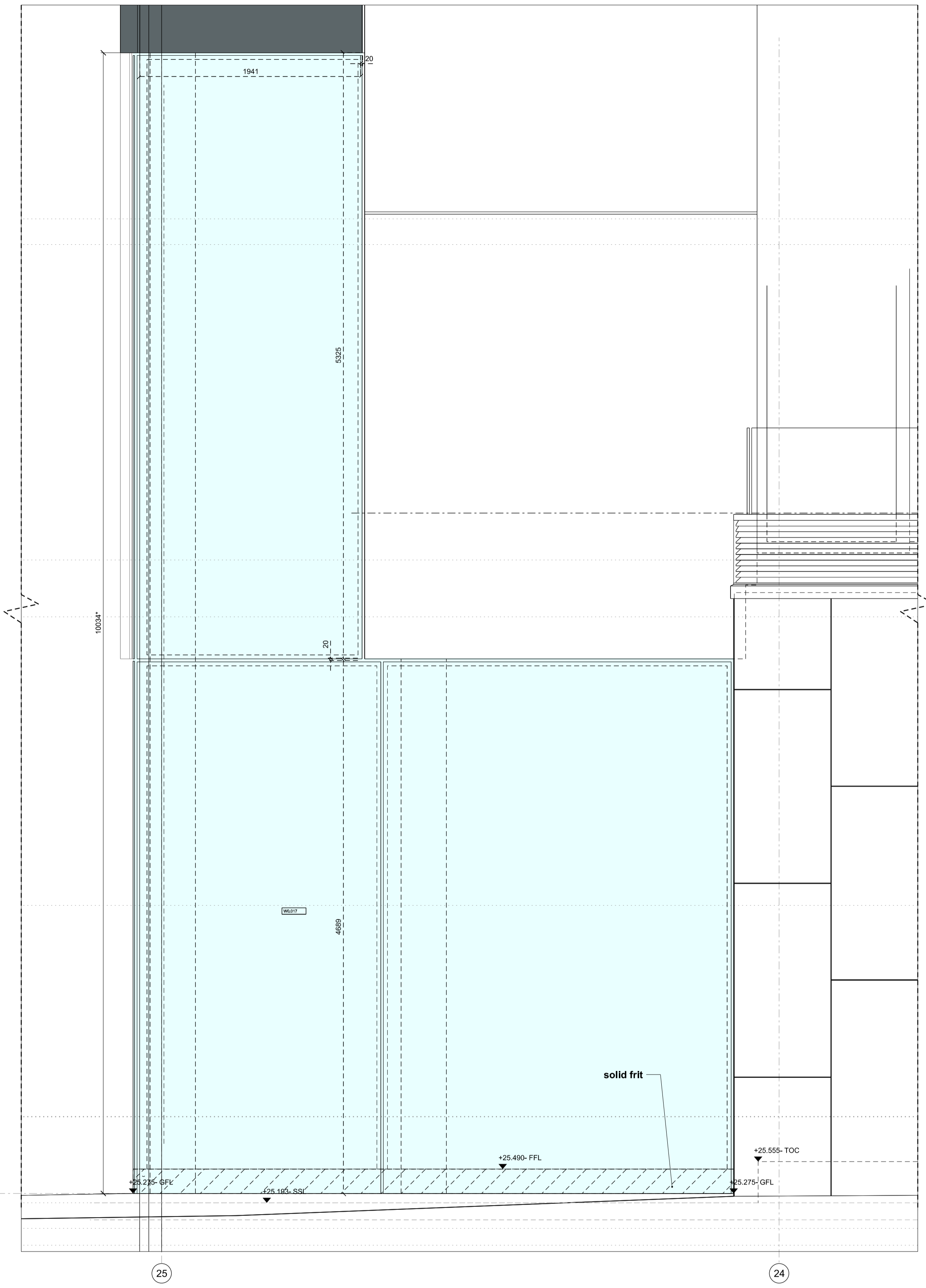
**TITLE**  
Components Drawing  
Glazing - R09b / Display Space / Entrance Lobby  
W0.017 (1 of 2)

DRAWN	AC	JOB #	DRG #	REV
MF		600	15467-CPW	PL1

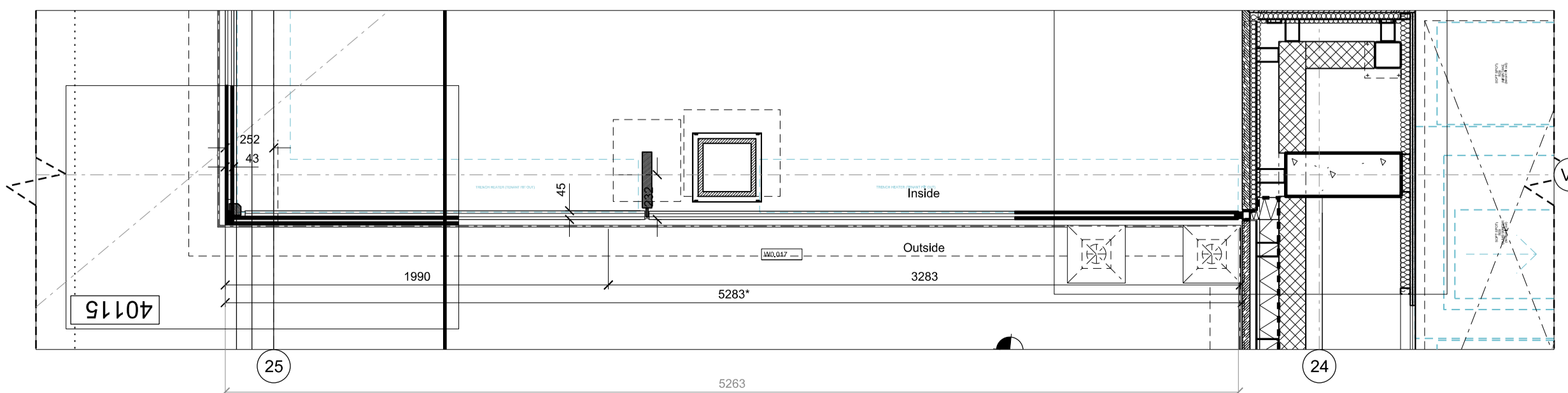
CHECKED	SCALE@A1	SIZE	DATE	REV/DATE
	1:25	A1	AUG 13	19.07.16



**Section A - A**  
01 552-15468

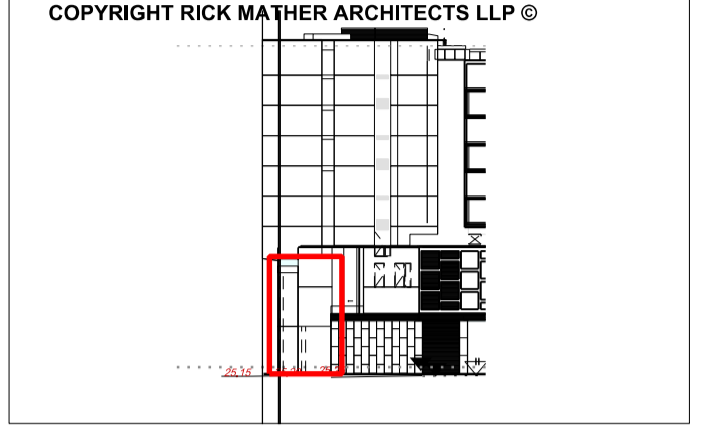


**W0.017- East Elevation**  
01 552-15428



**W0.017- Plan**  
02 552-15428

**NOTES**  
DO NOT SCALE FROM THIS DRAWING. CONTRACTOR TO CHECK ALL DIMENSIONS ON SITE. ANY DISCREPANCIES TO BE REPORTED TO THE ARCHITECT IMMEDIATELY.  
THE SURVEY INFORMATION CONTAINED IN THIS DRAWING WAS PROVIDED BY PLOWMAN CRAVEN LTD AND BMCE LTD FOR FURTHER DETAIL. PLEASE REQUEST AS APPROPRIATE.  
CONSTRUCTION DETAILS SUBJECT TO DISCHARGE OF PLANNING CONDITIONS  
ASBESTOS AND ANY DANGEROUS OR HAZARDOUS SUBSTANCES: AS MAIN CONTRACT PRELIMINARIES - CLAUSES A34/370 & A34/371A.  
THIS DRAWING HAS BEEN ISSUED PRIOR TO RECEIPT OF THE PRE-CONSTRUCTION INFORMATION REQUIRED BY THE DESIGN TEAM.  
COPYRIGHT RICK MATHER ARCHITECTS LLP ©



Location Elevation East

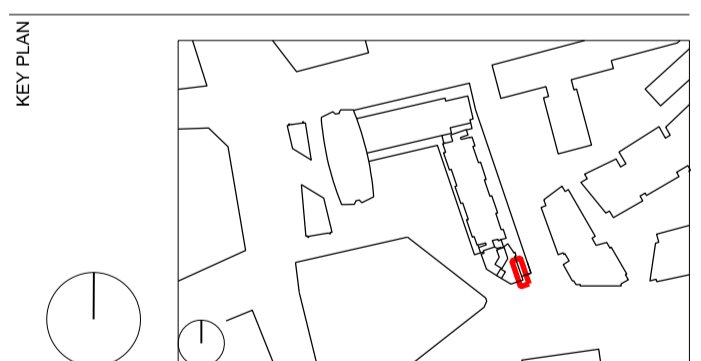
**KEY**  
\* ALL DIMENSIONS SHOWN ARE NOTIONAL PENDING CONFIRMATION FROM DETAILED SURVEY BY OTHERS.  
DENOTES EXISTING

**REVISIONS**

REV	DATE	DESCRIPTION
PL1	19.07.16	PLANNING CONDITION SUBMISSION 3A-CPW

**CONTRACTOR**  
Brookfield MULTIPLEX

**CLIENT**  
BM



**STATUS**  
PLANNING

**RICK MATHER ARCHITECTS ©**  
123 Camden High Street London NW1 7JR  
T: 020 7284 1727 F: 020 7287 7626  
info@rickmather.com www.rickmather.com

**JOB**  
Centre Point  
101-103 New Oxford Street  
London, WC1A 1DD

**TITLE**  
Components Drawing  
Glazing - R09b / Display Space / Entrance Lobby  
W0.017 (2 of 2)

DRAWN	AC	JOB #	DRG #	REV
		600	15468-CPW	PL1

CHECKED	SCALE@A1	SIZE	DATE	REV/DATE
MF	1:25	A1	July 13	19.07.16