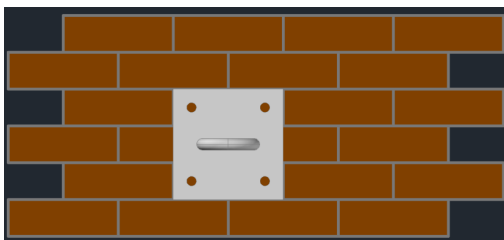


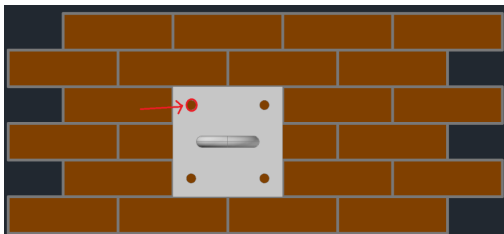
## MethodStatement

- Meeting with building owner/agent to agree exact location for eyebolts and pictorial representation submitted as part of wayleave agreement
- Once agreement has been made on the above, any listed building permissions will be sought from Westminster City Council (WCC)
- Prior to the lighting installation, the new fixings will be installed at night using a cherry picker mounted on the pavements. All permissions for cherry picker operation will be undertaken by us.
- The cherry picker will be operated by authorised personnel and appropriate signage and barriers deployed
- The existing M16 eyebolts in position will be removed and holes filled. The new plate fixtures will be positioned over these existing locations
- Hole will be drilled in agreed location and then blown out for excess dust and scrubbed with wire brush
- Chemical resin is then inserted into the hole. The internally threaded sleeve is then installed into the hole and any excess resin will be cleaned away

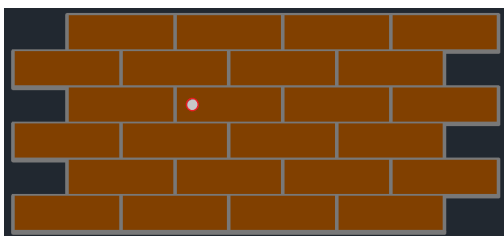
Place the plate over to the wall:



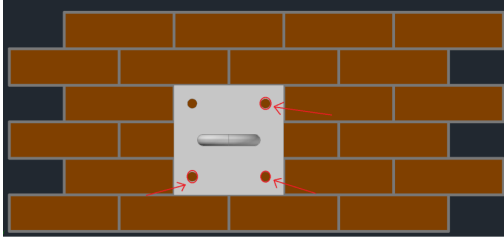
Mark the hole and drill



Take the plate up and drill the hole



Place the plate over to the wall, leveling the plate and drill the remaining holes

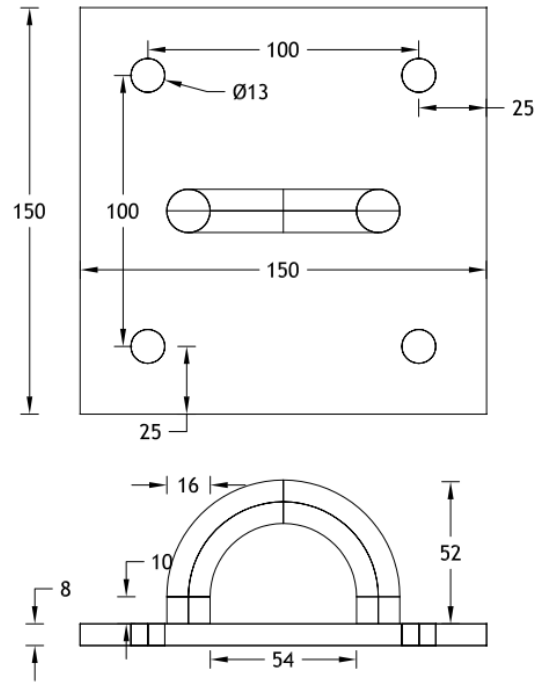
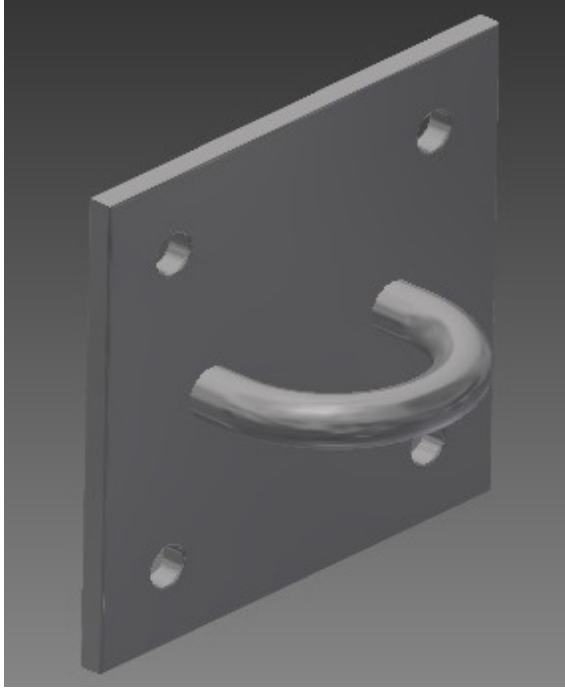


- After a set period of time, the threaded sleeves will have M12 bolts screwed into the corresponding fixings to secure the 4/6 hole plate into position
- The fixing will then be tested using a pull tester, with spreader legs to allow the machine to affix to the central ring of the plate
- All results will be noted and sent to building owner and WCC.
- The eyebolts will be tested yearly and tagged accordingly.
- Once the festive lights are removed, the bolts and plates will be removed and fixing caps/pig nose bolts inserted – these to be painted to match façade colour to minimise visibility and keep the internal sleeves free from water and debris

Planned method is to use internally threaded sockets. These would be chemically fixed into position. The threaded sleeve below would be drilled into the building and finished flush with the building façade. Once the sleeves are capped there will be less visual presence than the previous permanent M16 eyebolt left in situ.

M12 (internal measure) x 125mm (sunk length)





M12 x 50mm Stainless Steel Bolt (4 of per plate)

M12 x 50mm Stainless Steel Bolt (4 of)



Once displays are removed, the above bolts will be unscrewed and a countersunk bolt inserted to cap the sleeve and minimise any visual impairment to the building. These will be painted to match brickwork