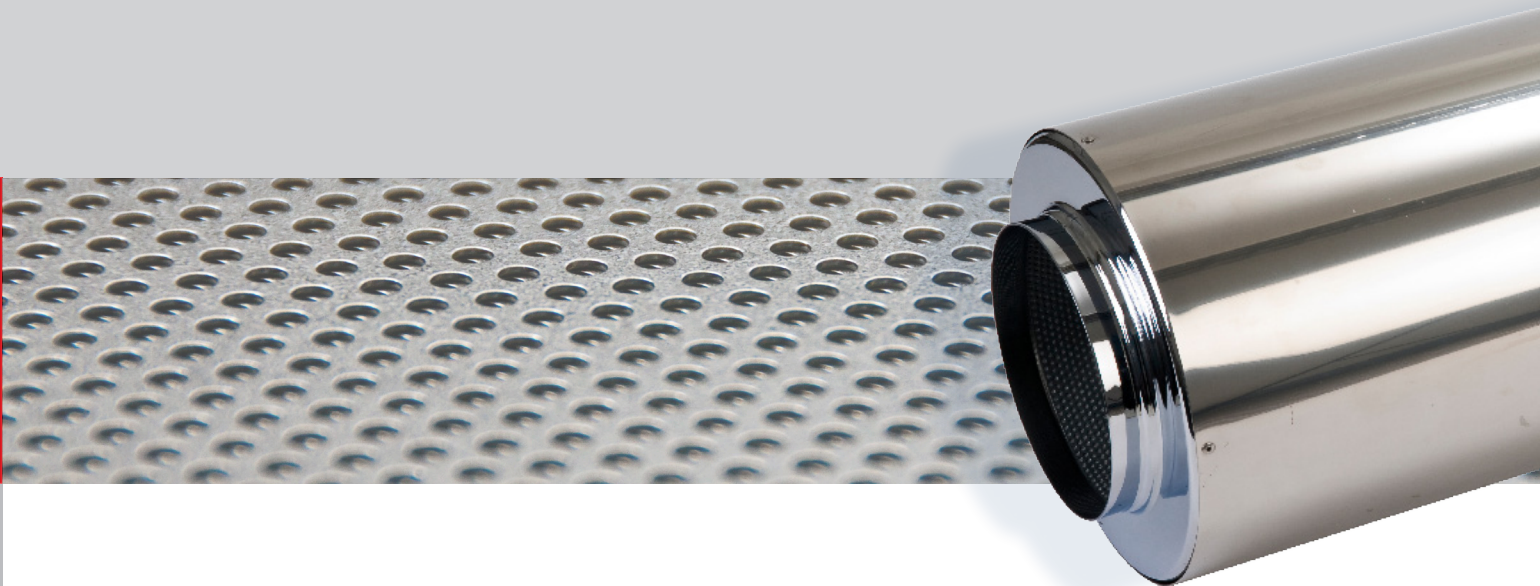
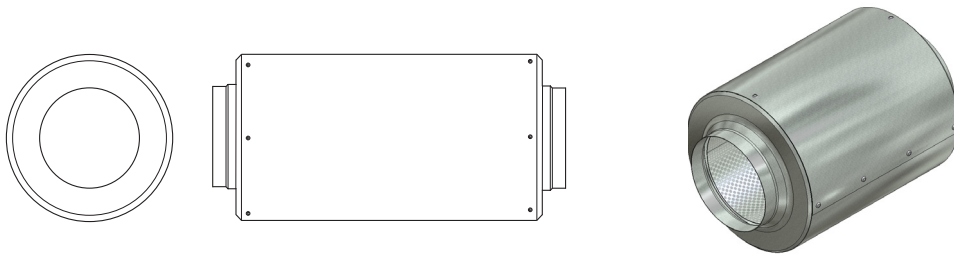


**ACOUSTICA™**

SELECTED DISTRIBUTION PRODUCTS

INNOVATION IN NOISE CONTROL





## SPIGOTTED DUCT MOUNTED SILENCER

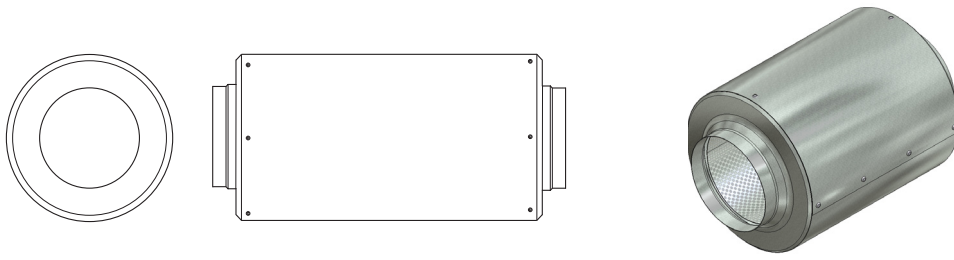
Available in four standard lengths, M-Series Silencers have excellent attenuation properties, achieved with sound absorbing infill retained in the attenuator casing by a perforated galvanised steel liner.

- Fits directly into ISO diameter ducting
- Standard lengths 300, 600, 900 & 1200mm
- Use up to 70°C (standard construction)
- Systems up to 1000 Pascals
- 160mm and 300mm diameter available
- Special lengths on request

### TYPICAL NOISE REDUCTION (dB) - CENTRE BAND FREQUENCY

PRODUCT	DIA	LENGTH	63Hz	125Hz	250Hz	500Hz	1KHz	2KHz	4KHz	8KHz	MASS
CP01-M10-030	100	300mm	3	4	9	17	23	26	25	14	3 Kg
CP01-M10-060		600mm	5	8	15	33	39	40	36	20	5 Kg
CP01-M10-090		900mm	10	13	21	40	45	40	36	24	7 Kg
CP01-M10-120		1200mm	12	15	23	42	47	42	38	26	9 Kg
CP01-M12-030	125	300mm	3	3	8	16	21	24	22	12	3 Kg
CP01-M12-060		600mm	4	8	13	30	35	35	31	15	6 Kg
CP01-M12-090		900mm	9	12	18	37	41	38	34	20	8 Kg
CP01-M12-120		1200mm	11	15	21	40	46	41	36	23	10 Kg
CP01-M15-030	150	300mm	3	3	6	14	19	23	22	11	4 Kg
CP01-M15-060		600mm	4	7	12	23	30	36	31	15	6 Kg
CP01-M15-090		900mm	8	9	15	31	37	37	34	18	9 Kg
CP01-M15-120		1200mm	10	14	17	34	41	40	36	20	11 Kg
CP01-M20-030	200	300mm	2	3	6	13	17	20	18	9	4 Kg
CP01-M20-060		600mm	4	6	10	20	27	32	20	11	8 Kg
CP01-M20-090		900mm	7	9	14	32	39	36	26	15	11 Kg
CP01-M20-120		1200mm	10	12	17	35	41	44	28	16	15 Kg
CP01-M25-030	250	300mm	2	3	6	12	16	19	17	8	5 Kg
CP01-M25-060		600mm	3	6	10	19	25	29	18	10	9 Kg
CP01-M25-090		900mm	5	8	12	24	30	30	22	14	13 Kg
CP01-M25-120		1200mm	7	10	15	31	37	38	26	15	17 Kg

Typical noise reduction data is derived from continual testing to BS4718 and other standards in independent UKAS certified laboratories, which includes where appropriate, re-generated or self noise testing in both forward and reverse flow conditions. If you request system analysis from our technicians all predictions will be assessed using the relevant certified insertion loss data together with relevant dynamic corrections.



## SPIGOTTED DUCT MOUNTED SILENCER

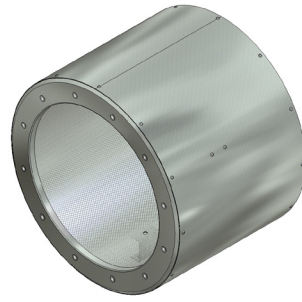
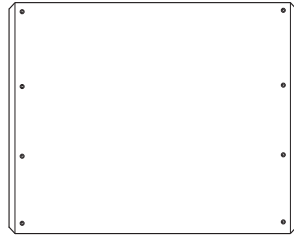
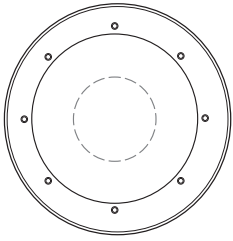
Available in four standard lengths, M-Series Silencers have excellent attenuation properties, achieved with sound absorbing infill retained in the attenuator casing by a perforated galvanised steel liner.

- Fits directly into ISO diameter ducting
- Standard lengths 300, 600, 900 & 1200mm
- Use up to 70°C (standard construction)
- Systems up to 1000 Pascals
- 160mm and 300mm diameter available
- Special lengths on request

### TYPICAL NOISE REDUCTION (dB) - CENTRE BAND FREQUENCY

PRODUCT CODE	DIA	LENGTH	63Hz	125Hz	250Hz	500Hz	1KHz	2KHz	4KHz	8KHz	MASS
CP01-M31-030	315	300mm	1	3	6	12	15	18	16	8	6 Kg
CP01-M31-060		600mm	3	5	8	16	21	22	16	14	11 Kg
CP01-M31-090		900mm	4	7	10	20	31	28	17	14	15 Kg
CP01-M31-120		1200mm	6	9	14	23	32	32	18	15	20 Kg
CP01-M35-030	355	300mm	1	3	6	12	15	18	16	8	7 Kg
CP01-M35-060		600mm	3	5	8	16	21	22	16	14	12 Kg
CP01-M35-090		900mm	4	7	10	20	31	28	17	14	18 Kg
CP01-M35-120		1200mm	6	9	14	23	32	32	18	15	23 Kg
CP01-M40-030	400	300mm	1	2	4	11	15	15	12	8	7 Kg
CP01-M40-060		600mm	2	4	7	14	17	18	14	11	12 Kg
CP01-M40-090		900mm	3	6	9	18	26	23	15	12	18 Kg
CP01-M40-120		1200mm	5	8	13	22	30	27	17	12	23 Kg
CP01-M45-030	450	300mm	1	1	4	10	14	15	12	7	8 Kg
CP01-M45-060		600mm	2	4	6	14	16	16	13	11	15 Kg
CP01-M45-090		900mm	3	6	8	17	24	21	15	11	22 Kg
CP01-M45-120		1200mm	4	8	13	20	29	25	16	11	32 Kg
CP01-M50-030	500	300mm	1	1	3	10	14	14	11	7	9 Kg
CP01-M50-060		600mm	2	4	6	14	16	16	13	11	16 Kg
CP01-M50-090		900mm	3	6	8	17	24	21	15	11	24 Kg
CP01-M50-120		1200mm	4	8	12	19	28	23	16	12	32 Kg

Typical noise reduction data is derived from continual testing to BS4718 and other standards in independent UKAS certified laboratories, which includes where appropriate, re-generated or self noise testing in both forward and reverse flow conditions. If you request system analysis from our technicians all predictions will be assessed using the relevant certified insertion loss data together with relevant dynamic corrections.



## FAN MOUNTED SILENCER

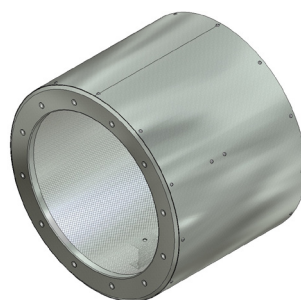
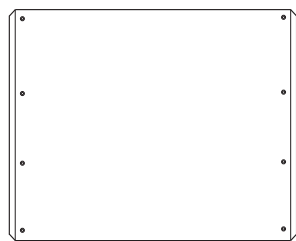
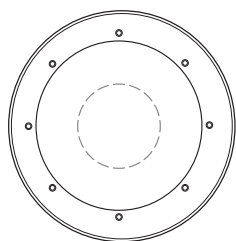
Available in two standard lengths C Series silencers have excellent attenuation properties, achieved with sound absorbing infill retained in the attenuator casing by a perforated liner. The central pod (code P) is an option to increase the insertion loss, however it will add resistance.

- Fits directly onto ISO diameter fans
- Standard lengths 1 Diameter & 2 Diameter ( 1D & 2D )
- Use up to 70°C (standard construction)
- Systems up to 1000 Pascals
- Special lengths on request

## INSERTION LOSS (dB) - CENTRE BAND FREQUENCY

PRODUCT CODE	DIA	LENGTH	63Hz	125Hz	250Hz	500Hz	1KHz	2KHz	4KHz	8KHz	MASS	A PATTERN	B PATTERN
CP03-C*-0250-1D	250	250mm	1	1	3	8	11	9	8	8	9 Kg	8 x M8 on 286 PCD	6 x M8 on 286 PCD
CP03-C*-0250-2D		500mm	2	2	3	9	12	11	8	7	11 Kg		
CP03-C*P-0250-1D		250mm	2	6	8	12	20	23	20	17	15 Kg		
CP03-C*P-0250-2D		500mm	3	11	13	20	28	28	23	18	18 Kg		
CP03-CA-0315-1D	315	315mm	1	2	4	9	11	10	9	7	9 Kg	8 x M8 on 355 PCD	as A
CP03-CA-0315-2D		630mm	2	2	4	9	11	10	9	7	11 Kg		
CP03-CAP-0315-1D		315mm	2	7	8	14	22	25	22	19	15 Kg		
CP03-CAP-0315-2D		630mm	3	13	14	23	30	30	25	20	18 Kg		
CP03-CA-0355-1D	355	355mm	2	3	5	11	13	11	10	8	11 Kg	8 x M8 on 395 PCD	as A
CP03-CA-0355-2D		710mm	3	4	7	14	18	15	11	10	18 Kg		
CP03-CAP-0355-1D		355mm	2	6	8	11	22	24	21	16	13 Kg		
CP03-CAP-0355-2D		710mm	3	10	15	22	29	30	29	22	22 Kg		
CP03-C*-0400-1D	400	400mm	2	3	5	10	13	11	9	8	9 Kg	8 x M8 - 450 PCD	12 x M8 - 438 PCD
CP03-C*-0400-2D		800mm	3	4	8	14	18	14	11	9	11 Kg		
CP03-C*P-0400-1D		400mm	2	7	9	15	23	25	21	17	15 Kg		
CP03-C*P-0400-2D		800mm	3	10	14	24	30	29	28	21	18 Kg		
CP03-C*-0450-1D	450	450mm	2	3	6	12	13	11	9	7	15 Kg	8 x M10 - 500 PCD	12 x M8 - 487 PCD
CP03-C*-0450-2D		900mm	3	4	8	17	18	15	11	10	27 Kg		
CP03-C*P-0450-1D		450mm	2	6	8	16	23	23	21	16	18 Kg		
CP03-C*P-0450-2D		900mm	3	7	12	22	29	29	25	20	32 Kg		
CP03-C*-0500-1D	500	500mm	2	3	6	14	14	12	10	5	18 Kg	12 x M10 - 560 PCD	12 x M8 - 541 PCD
CP03-C*-0500-2D		1000mm	3	7	8	19	20	17	14	11	32 Kg		
CP03-C*P-0500-1D		500mm	2	7	9	17	24	24	20	16	22 Kg		
CP03-C*P-0500-2D		1000mm	4	10	16	26	29	29	29	20	37 Kg		

Replace \* in code with A or B for connection pattern. Insertion loss data is derived from continual testing to BS4718 and other standards in independent UKAS certified laboratories, which includes where appropriate, re-generated or self noise testing in both forward and reverse flow conditions. If you request system analysis from our technicians all predictions will be assessed using the relevant certified insertion loss data together with relevant dynamic corrections.



## FAN MOUNTED SILENCER

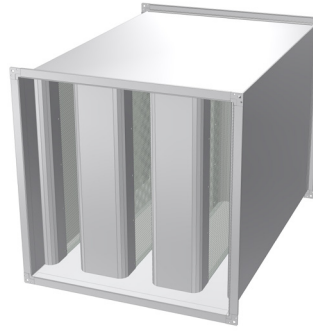
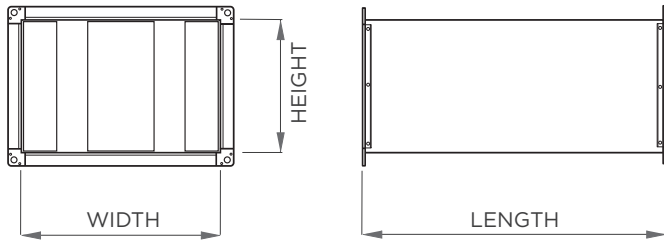
Available in two standard lengths C Series silencers have excellent attenuation properties, achieved with sound absorbing infill retained in the attenuator casing by a perforated liner. The central pod (code P) is an option to increase the insertion loss, however it will add resistance.

- Fits directly onto ISO diameter fans
- Standard lengths 1 Diameter & 2 Diameter ( 1D & 2D )
- Use up to 70°C (standard construction)
- Systems up to 1000 Pascals
- Special lengths on request

## INSERTION LOSS (dB) - CENTRE BAND FREQUENCY

PRODUCT CODE	DIA	LENGTH	63Hz	125Hz	250Hz	500Hz	1KHz	2KHz	4KHz	8KHz	MASS	A PATTERN	B PATTERN
CP03-C*-0560-1D	560	560mm	2	4	7	14	14	9	9	7	22 Kg	12 x M10-620 PCD	16 x M10-605 PCD
CP03-C*-0560-2D		1120mm	3	6	10	19	20	14	12	10	48 Kg		
CP03-C*P-0560-1D		560mm	3	7	9	18	24	24	20	15	26 Kg		
CP03-C*P-0560-2D		1120mm	4	9	17	27	29	28	23	23	57 Kg		
CP03-C*-0630-1D	630	630mm	2	5	7	15	13	9	9	7	26 Kg	12 x M10-690 PCD	16 x M10-674 PCD
CP03-C*-0630-2D		1260mm	3	5	9	18	25	22	18	13	48 Kg		
CP03-C*P-0630-1D		630mm	4	7	13	21	21	14	13	12	32 Kg		
CP03-C*P-0630-2D		1260mm	5	9	18	28	30	29	24	19	57 Kg		
CP03-C*-0710-1D	710	710mm	3	5	9	15	14	10	9	8	32 Kg	16 x M10-770 PCD	16 x M10-751 PCD
CP03-C*-0710-2D		1420mm	4	9	16	22	23	17	13	9	59 Kg		
CP03-C*P-0710-1D		710mm	3	5	10	19	25	22	18	14	39 Kg		
CP03-C*P-0710-2D		1420mm	5	9	17	28	29	30	26	20	71 Kg		
CP03-C*-0800-1D	800	800mm	3	5	9	16	14	10	8	8	40 Kg	16 x M10-860 PCD	24 x M10-837 PCD
CP03-C*-0800-2D		1600mm	4	6	10	21	23	17	12	10	74 Kg		
CP03-C*P-0800-1D		800mm	4	5	10	15	25	22	19	14	49 Kg		
CP03-C*P-0800-2D		1600mm	5	8	18	29	30	29	27	19	90 Kg		
CP03-C*-0900-1D	900	900mm	3	5	10	17	15	11	9	8	55 Kg	16 x M12-970 PCD	24 x M10-934 PCD
CP03-C*-0900-2D		1800mm	4	6	13	22	21	14	12	11	102 Kg		
CP03-C*P-0900-1D		900mm	5	6	11	21	23	22	17	13	67 Kg		
CP03-C*P-0900-2D		1800mm	5	11	18	29	30	26	19	16	102 Kg		
CP03-C*-1000-1D	1000	1000mm	4	6	11	17	15	11	9	8	66 Kg	16 x M12-1070 PCD	24 x M10-1043 PCD
CP03-C*-1000-2D		2000mm	5	10	16	23	23	16	13	11	124 Kg		
CP03-C*P-1000-1D		1000mm	5	6	13	22	25	21	17	14	82 Kg		
CP03-C*P-1000-2D		2000mm	5	10	19	29	30	27	22	18	151 Kg		

Replace \* in code with A or B for connection pattern. Insertion loss data is derived from continual testing to BS4718 and other standards in independent UKAS certified laboratories, which includes where appropriate, re-generated or self noise testing in both forward and reverse flow conditions. If you request system analysis from our technicians all predictions will be assessed using the relevant certified insertion loss data together with relevant dynamic corrections.



## RECTANGULAR DUCT SILENCER

Available in seven standard lengths R02 range of Rectangular Duct Mounted Silencers have excellent attenuation properties, achieved with sound absorbing infill splitters, retained in the attenuator casing by a perforated liner.

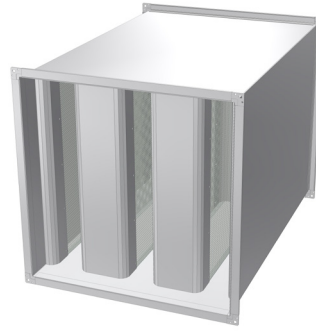
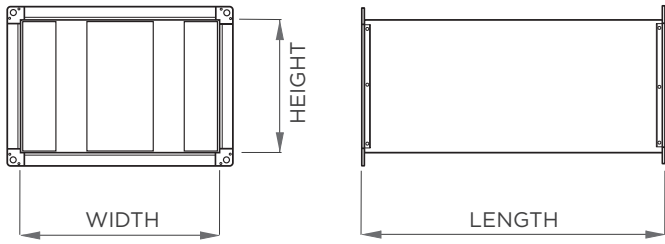
The resistance to airflow is a function of the face velocity and length. It is not recommended to select the R02 Silencers with a face velocity above the values shown, without asking advice regarding re-generated self noise. We can advise on the selections and can perform system analysis to ensure the correct unit is specified.

### INSERTION LOSS (dB) - CENTRE BAND FREQUENCY

### RESISTANCE TO AIRFLOW (Pa)

CODE	LENGTH	63Hz	125Hz	250Hz	500Hz	1KHz	2KHz	4KHz	8KHz	1.0m/s	1.5m/s	2.0m/s	2.5m/s
R02 2	600mm	7	12	20	31	39	40	38	27	9 pa	29 pa	52 pa	80 pa
	900mm	9	16	25	42	50	50	50	41	9 pa	30 pa	54 pa	82 pa
	1200mm	11	20	34	50	50	50	50	48	10 pa	31 pa	55 pa	84 pa
	1500mm	13	24	41	50	50	50	50	50	10 pa	32 pa	56 pa	85 pa
	1800mm	15	30	47	50	50	50	50	50	11 pa	32 pa	57 pa	88 pa
	2100mm	16	33	50	50	50	50	50	50	11 pa	34 pa	57 pa	90 pa
	2400mm	20	38	50	50	50	50	50	50	12 pa	36 pa	60 pa	95 pa
CODE	LENGTH	63Hz	125Hz	250Hz	500Hz	1KHz	2KHz	4KHz	8KHz	1.5m/s	2.0m/s	2.5m/s	3.0m/s
R02 3	600mm	6	9	13	25	31	32	24	20	13 pa	22 pa	35 pa	50 pa
	900mm	7	12	18	33	42	42	37	28	13 pa	22 pa	35 pa	50 pa
	1200mm	8	15	25	42	50	50	46	34	13 pa	22 pa	35 pa	50 pa
	1500mm	9	18	30	47	50	50	50	40	13 pa	22 pa	35 pa	50 pa
	1800mm	10	20	35	49	50	50	50	42	15 pa	27 pa	42 pa	60 pa
	2100mm	12	23	40	50	50	50	50	49	15 pa	27 pa	42 pa	60 pa
	2400mm	13	26	40	50	50	50	50	50	15 pa	27 pa	42 pa	60 pa
CODE	LENGTH	63Hz	125Hz	250Hz	500Hz	1KHz	2KHz	4KHz	8KHz	1.5m/s	2.0m/s	2.5m/s	3.0m/s
R02 4	600mm	5	8	12	23	30	30	23	18	15 pa	23 pa	33 pa	43 pa
	900mm	6	10	16	30	37	37	30	24	15 pa	23 pa	34 pa	44 pa
	1200mm	7	13	22	38	47	47	40	29	16 pa	24 pa	35 pa	46 pa
	1500mm	8	16	26	42	49	49	45	32	16 pa	25 pa	35 pa	48 pa
	1800mm	9	18	31	46	50	49	47	34	17 pa	25 pa	35 pa	50 pa
	2100mm	11	20	36	50	50	50	50	41	18 pa	26 pa	36 pa	51 pa
	2400mm	12	22	40	50	50	50	50	47	18 pa	26 pa	38 pa	52 pa

Insertion loss data is derived from continual testing to BS4718 and other standards in independent UKAS certified laboratories, which includes where appropriate, re-generated or self noise testing in both forward and reverse flow conditions. If you request system analysis from our technicians all predictions will be assessed using the relevant certified insertion loss data together with relevant dynamic corrections.



## RECTANGULAR DUCT SILENCER

Available in seven standard lengths R02 range of Rectangular Duct Mounted Silencers have excellent attenuation properties, achieved with sound absorbing infill splitters, retained in the attenuator casing by a perforated liner.

The resistance to airflow is a function of the face velocity and length. It is not recommended to select the R02 Silencers with a face velocity above the values shown, without asking advice regarding re-generated self noise. We can advise on the selections and can perform system analysis to ensure the correct unit is specified.

### INSERTION LOSS (dB) - CENTRE BAND FREQUENCY

### RESISTANCE TO AIRFLOW (Pa)

CODE	LENGTH	63Hz	125Hz	250Hz	500Hz	1KHz	2KHz	4KHz	8KHz	1.5m/s	2.0m/s	2.5m/s	3.0m/s
R02 5	600mm	4	6	11	19	24	23	18	12	5 pa	8 pa	13 pa	18 pa
	900mm	4	6	12	26	30	31	22	16	5 pa	8 pa	13 pa	18 pa
	1200mm	5	9	18	32	40	39	28	19	5 pa	8 pa	13 pa	18 pa
	1500mm	7	11	23	37	45	45	32	22	5 pa	8 pa	13 pa	18 pa
	1800mm	8	13	25	44	50	50	37	24	8 pa	10 pa	15 pa	22 pa
	2100mm	9	16	28	50	50	50	45	29	8 pa	10 pa	15 pa	22 pa
	2400mm	11	19	33	50	50	50	50	32	8 pa	10 pa	15 pa	22 pa
CODE	LENGTH	63Hz	125Hz	250Hz	500Hz	1KHz	2KHz	4KHz	8KHz	2.5m/s	3.0m/s	4.0m/s	5.0m/s
R02 6	600mm	2	3	6	7	12	14	11	10	12 pa	16 pa	23 pa	43 pa
	900mm	3	6	11	19	24	24	15	11	12 pa	16 pa	24 pa	44 pa
	1200mm	4	7	15	26	29	32	20	14	13 pa	17 pa	25 pa	45 pa
	1500mm	5	8	19	33	39	39	25	17	13 pa	17 pa	25 pa	46 pa
	1800mm	6	10	21	36	45	45	28	19	13 pa	18 pa	26 pa	47 pa
	2100mm	7	13	25	43	50	50	33	21	14 pa	19 pa	27 pa	51 pa
	2400mm	7	15	28	49	50	50	38	25	15 pa	19 pa	28 pa	54 pa
CODE	LENGTH	63Hz	125Hz	250Hz	500Hz	1KHz	2KHz	4KHz	8KHz	3.0m/s	4.0m/s	5.0m/s	6.0m/s
R02 8	600mm	2	2	5	12	12	11	7	4	9 pa	15 pa	22 pa	35 pa
	900mm	2	4	7	15	19	18	10	5	9 pa	15 pa	24 pa	35 pa
	1200mm	3	5	10	19	24	23	14	6	9 pa	16 pa	25 pa	36 pa
	1500mm	3	7	12	24	30	30	19	7	9 pa	16 pa	24 pa	36 pa
	1800mm	4	8	16	27	35	36	20	8	10 pa	17 pa	27 pa	37 pa
	2100mm	5	9	20	33	42	42	26	10	11 pa	18 pa	26 pa	38 pa
	2400mm	5	10	23	38	45	45	28	12	12 pa	18 pa	28 pa	40 pa

Insertion loss data is derived from continual testing to BS4718 and other standards in independent UKAS certified laboratories, which includes where appropriate, re-generated or self noise testing in both forward and reverse flow conditions. If you request system analysis from our technicians all predictions will be assessed using the relevant certified insertion loss data together with relevant dynamic corrections.



## LIMPET FLANGE

Limpet Flanges are a unique product that has been designed to speed installation times with dual arcuated slots. The integral groove ensures a positive location for the installation of flexible connections. The one piece seamless construction is hot dip galvanised to provide longevity internally or externally.

## LIMPET FOOT

Limpet Fan Support Feet are a unique product that has been designed to speed installation times with dual arcuated slots. Integral radial and fold stiffening ribs add greatly to the strength.

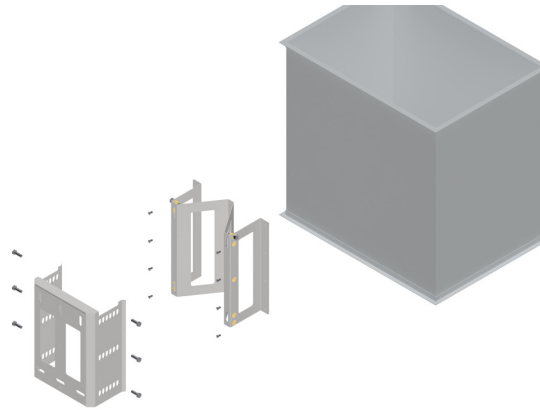
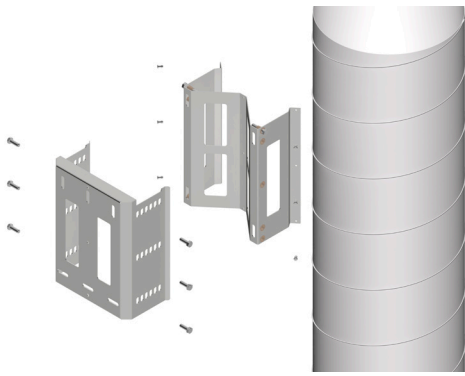
## LIMPET FAST FLEX

Limpet Fast Flex are a unique product that has been designed to speed up installation times with an integrated tightening band. The stainless steel is encapsulated within the material during construction allowing a single handed installation, significantly reducing fitting times. The part codes are for pairs.

### PRODUCT CODES

FLANGE CODE - PAIR	DIA	PATTERN A	PATTERN B	MASS
IP01-LFLAN-0250	250	8 x M8-286 PCD	6 x M8-286 PCD	1.4 Kg
IP01-LFLAN-0315	315	8 x M8-355 PCD	as A	1.7 Kg
IP01-LFLAN-0355	355	8 x M8-395 PCD	as A	2.0 Kg
IP01-LFLAN-0400	400	8 x M8-450 PCD	12 x M8-438 PCD	2.2 Kg
IP01-LFLAN-0450	450	8 x M10-500 PCD	12 x M8-487 PCD	2.4 Kg
IP01-LFLAN-0500	500	12 x M10-560 PCD	12 x M8-541 PCD	2.8 Kg
IP01-LFLAN-0560	560	12 x M10-620 PCD	16 x M10-605 PCD	3.1 Kg
IP01-LFLAN-0630	630	12 x M10-690 PCD	16 x M10-674 PCD	3.5 Kg
FOOT CODE - PAIR	DIA	PATTERN A	PATTERN B	MASS
IP03-LFOOT-0250	250	8 x M8-286 PCD	6 x M8-286 PCD	0.8 Kg
IP03-LFOOT-0315	315	8 x M8-355 PCD	as A	1.0 Kg
IP03-LFOOT-0355	355	8 x M8-395 PCD	as A	1.1 Kg
IP03-LFOOT-0400	400	8 x M8-450 PCD	12 x M8-438 PCD	1.4 Kg
IP03-LFOOT-0450	450	8 x M10-500 PCD	12 x M8-487 PCD	1.6 Kg
IP03-LFOOT-0500	500	12 x M10-560 PCD	12 x M8-541 PCD	1.8 Kg
IP03-LFOOT-0560	560	12 x M10-620 PCD	16 x M10-605 PCD	2.4 Kg
IP03-LFOOT-0630	630	12 x M10-690 PCD	16 x M10-674 PCD	2.7 Kg
FAST FLEX CODE - PAIR	DIA	MASS		
IP02-LFLEX-0250	250	0.4 Kg		
IP02-LFLEX-0315	315	0.4 Kg		
IP02-LFLEX-0355	355	0.5 Kg		
IP02-LFLEX-0400	400	0.6 Kg		
IP02-LFLEX-0450	450	0.6 Kg		
IP02-LFLEX-0500	500	0.7 Kg		
IP02-LFLEX-0560	560	0.8 Kg		





## LIMPET DUCT MOUNTING SYSTEM

Available in eight different diameters the Limpet duct mount system dramatically reduces installation time for vertical ductwork, and provides the confidence of a fully tested adjustable suspension system.

## RECTANGULAR DUCT MOUNTING SYSTEM

Available in three different sizes the Limpet duct mount system dramatically reduces installation time for vertical ductwork, and provides the confidence of a fully tested adjustable suspension system.

### PRODUCT CODES

CIRCULAR CODE	DIA	RATED LOAD	MASS
IP07-LDMC-0250	250	100 Kg	2.3 Kg
IP07-LDMC-0315	315	150 Kg	3.8 Kg
IP07-LDMC-0355	355	150 Kg	4.8 Kg
IP07-LDMC-0400	400	200 Kg	6.1 Kg
IP07-LDMC-0450	450	200 Kg	7.7 Kg
IP07-LDMC-0500	500	250 Kg	13.4 Kg
IP07-LDMC-0560	560	250 Kg	16.9 Kg
IP07-LDMC-0630	630	250 Kg	21.7 Kg
CIRCULAR CODE	SIZE	RATED LOAD	MASS
IP07-LDMR-0600	200-600	100 Kg	2.5Kg
IP07-LDMR-0900	600-900	150 Kg	6.9Kg
IP07-LDMR-1200	900-1200	250 Kg	14.5Kg