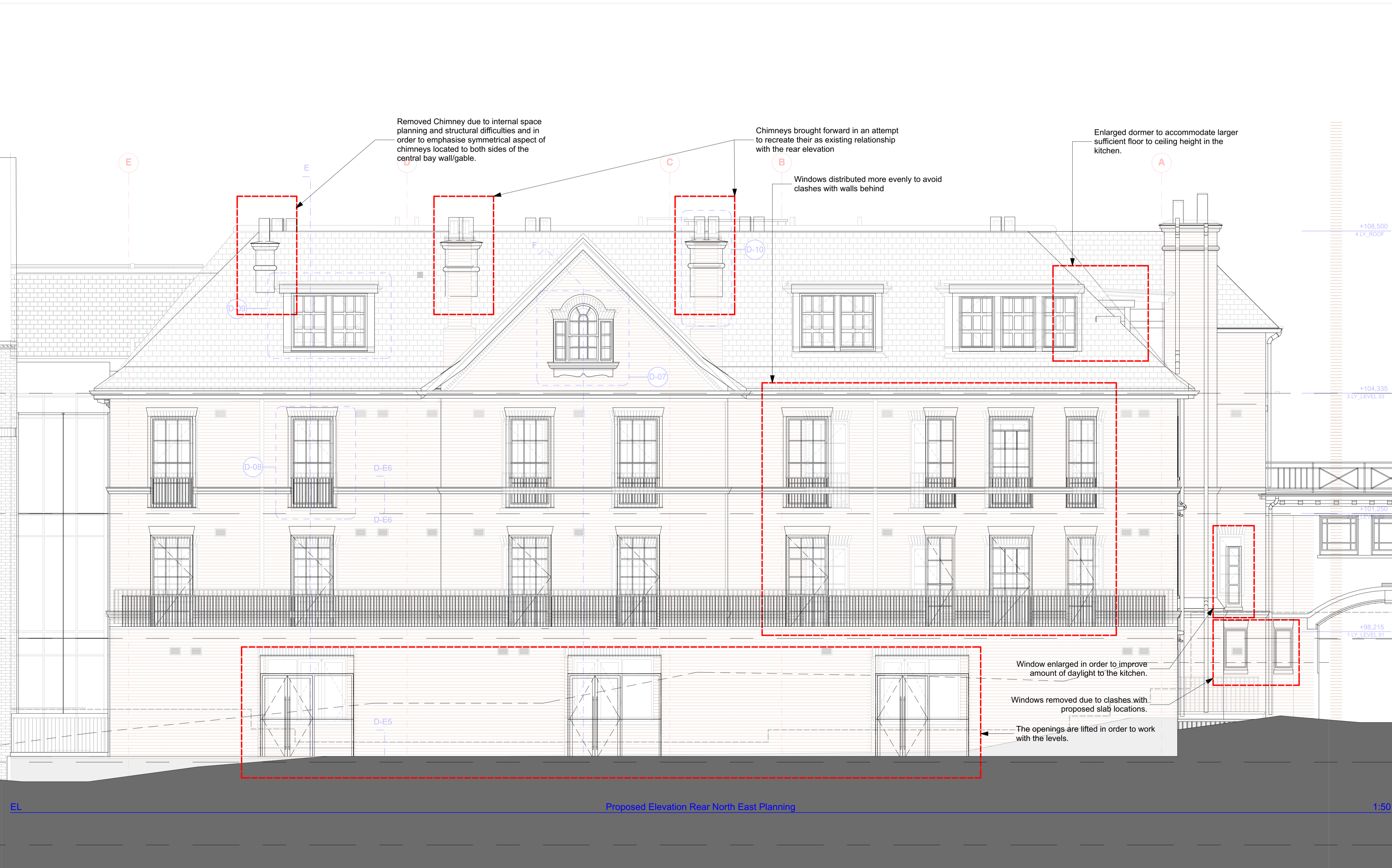


KEY PLAN



Removed Chimney due to internal space planning and structural difficulties and in order to emphasise symmetrical aspect of chimneys located to both sides of the central bay wall/gable.

Chimneys brought forward in an attempt to recreate their as existing relationship with the rear elevation

Enlarged dormer to accommodate larger sufficient floor to ceiling height in the kitchen.

Windows distributed more evenly to avoid clashes with walls behind

Window enlarged in order to improve amount of daylight to the kitchen.

Windows removed due to clashes with proposed slab locations.

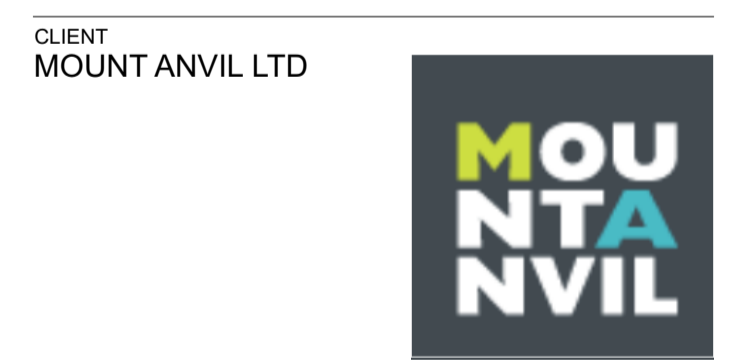
The openings are lifted in order to work with the levels.

EL Proposed Elevation Rear North East Planning 1:50

EL Scott Brownrigg Consented Rear Elevation 1:50

### PLANNING

REVISION	DRN	CHKD	DATE
First Issue	KrC	TW	12/07/2016



CLIENT  
MOUNT ANVIL LTD

PROJECT  
KIDDERPORE AVENUE

DRAWING  
Lady Chapman  
Elevation Proposed Rear North As Consented

SCALE 1:50 @ A1 DATE  
January 2016

DRAWING No. 15 230 DRAWN BY KrC  
9000-DRG-02LY-EL011 REV

A & Q PARTNERSHIP (LONDON) LTD  
THE LUX BUILDING, 2-4 HOXTON SQUARE, LONDON N1 6 NU  
Tel: 020 7613 2244 Fax: 020 7613 2642 Email: london@aqp.co.uk  
ARCHITECTURE DESIGN MASTERPLANNING INTERIORS