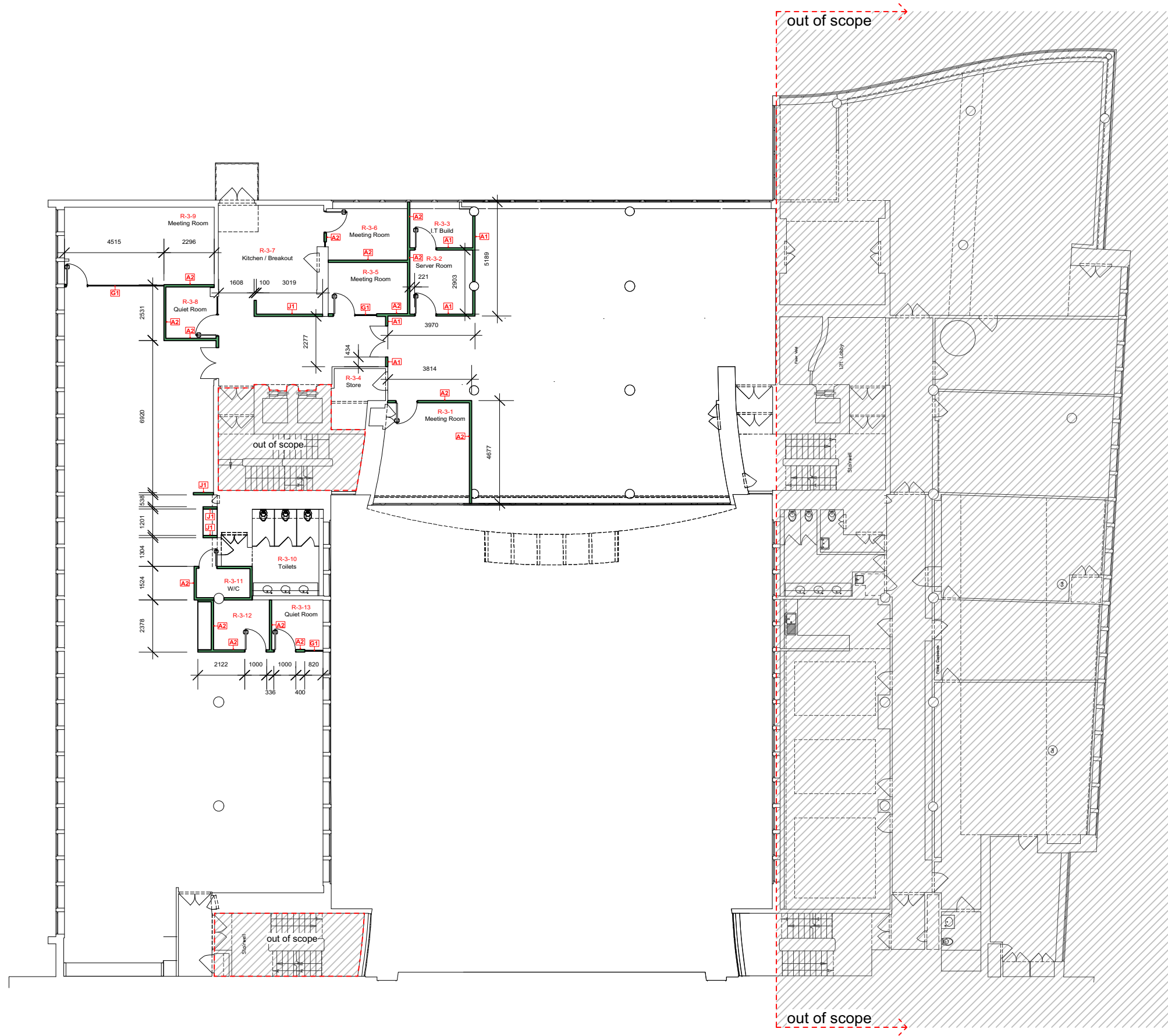


# Level 3 Partitions Plan



- New solid wall partition  
Make up: See annotation
- F100-AP1 2no. layers 12.5mm  
Wallboard; 50mm stud and  
25mm cavity insulation - 49db A1-
- F100-AP2 2no. layers 12.5mm  
Soundbloc; 50mm stud and  
25mm cavity insulation - 52db A2-
- Glazed partition  
See scope of works document  
for pricing options G1-
- Joinery item J1-

**Do not scale** from this drawing, use only written dimensions. Critical dimensions are identified thus with the 'x' prefix. Contractor to check **ALL** measurements on site prior to the commencement of the work and notify HTS of any discrepancies. All setting out to be approved by HTS **PRIOR** to fabrication.  
© The Harmsen Group/Harmsen Tilney Shane retain the copyright and ownership of the drawing which must not be copied without written consent.

**Revisions.**  
Rev.:    By:    Date:



**Client**  
TUC

**Project**  
Congress House

**Drawing Title**  
Level 3  
Partition Plan

Scale	Drawn	Date
1:200 (A3)	TC	04.07.16

Bristol | Farleigh Court | Flax Bourton | BS48 1UR  
T 01275 465 200

London | The Printworks | Dunstable Road | TW9 1RR  
T 020 8439 2970

www.harmsentilneyshane.com

Project no.	Drawing no.	Revision
<b>689</b>	<b>203</b>	<b>0</b>

**Purpose of Issue**  
Tender