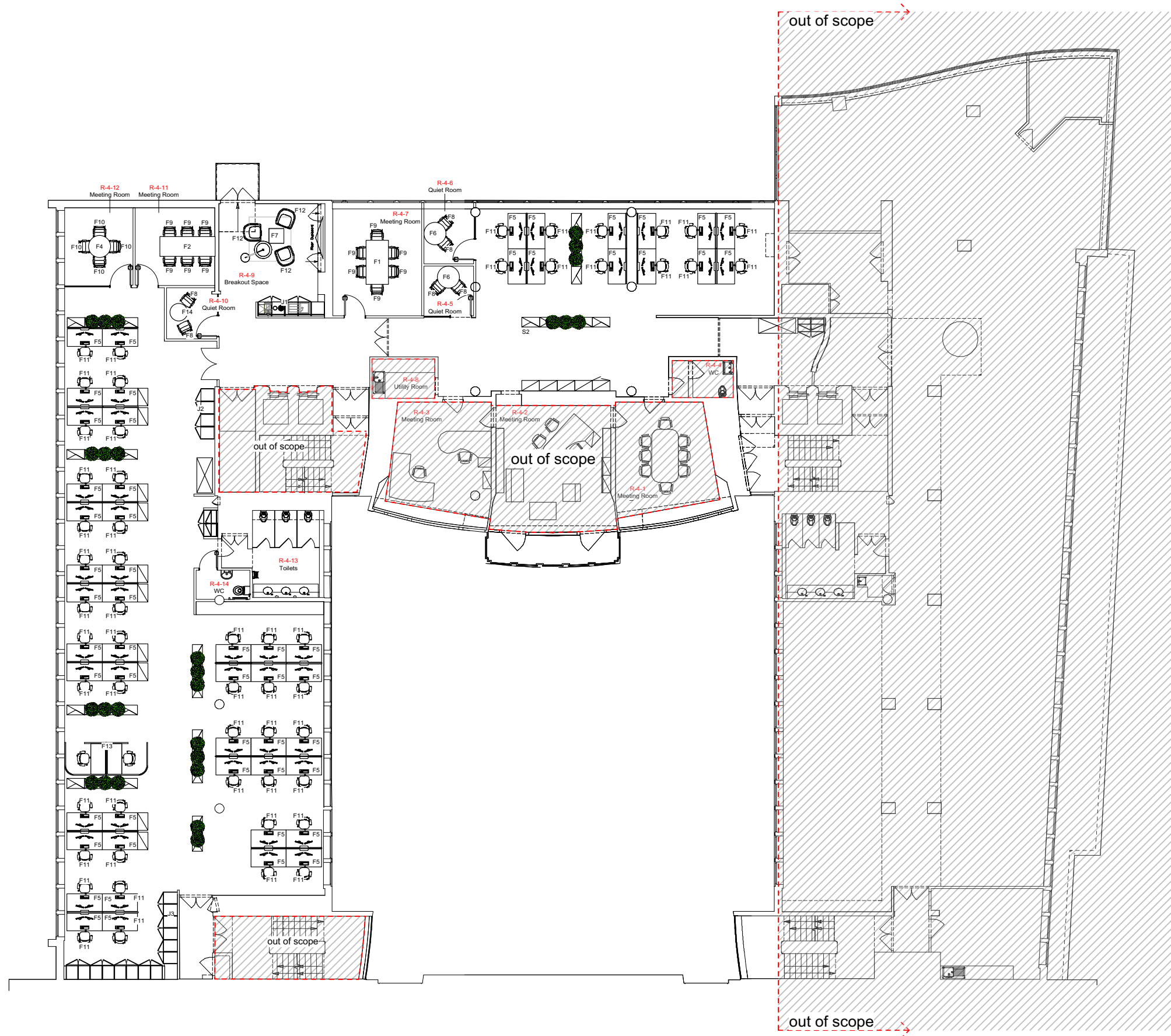


Level 4 Proposed General Arrangement Plan



Item	Quantity
F1 - Meeting Table 1 Spec: TBC	1
F2 - Meeting Table 2 Spec: TBC	1
F3 - Meeting Table 3 Spec: TBC	1
F4 - Meeting Table 4 Spec: TBC	1
F5 - Desk 1 Spec: TBC	54
F6 - Coffee table 1 Spec: TBC	2
F7 - Coffee table 2 Spec: TBC	1
F8 - Quiet Room Chair Spec: TBC	6
F9 - Meeting Room Chair 1 Spec: TBC	12
F10 - Meeting Room Chair 2 Spec: TBC	4
F11 - Task Chair 1 Spec: TBC	54
F12 - Lounge Chair Spec: TBC	3
F13 - Pod Spec: TBC	1
F18 - Office coffee table Spec: TBC	1
J1 - New kitchen point See drawing no:	1
J2 - New resource point See resource point drawing 2	1
J3 - New Storewall See Storewall drawing	1

Do not scale from this drawing, use only written dimensions. Critical dimensions are identified thus with the 'a' prefix. Contractor to check ALL measurements on site prior to the commencement of the work and notify HTS of any discrepancies. All setting out to be approved by HTS PRIOR to fabrication.
© The Harmsen Group/Harmsen Tilney Shane retain the copyright and ownership of the drawing which must not be copied without written consent.

Revisions.
Rev.: By: Date:



Client
TUC

Project
Congress House

Drawing Title
Level 4
Proposed General Arrangement Plan

Scale 1:200 (A3) **Drawn** TC **Date** 04.07.16

Bristol | Farleigh Court | Flax Bourton | BS48 1UR
T 01275 465 200

London | The Printworks | Dunstable Road | TW9 1RR
T 020 8439 2970

www.harmsentilneyshane.com

Project no. 689 **Drawing no.** 104 **Revision** 0

Purpose of Issue
Tender