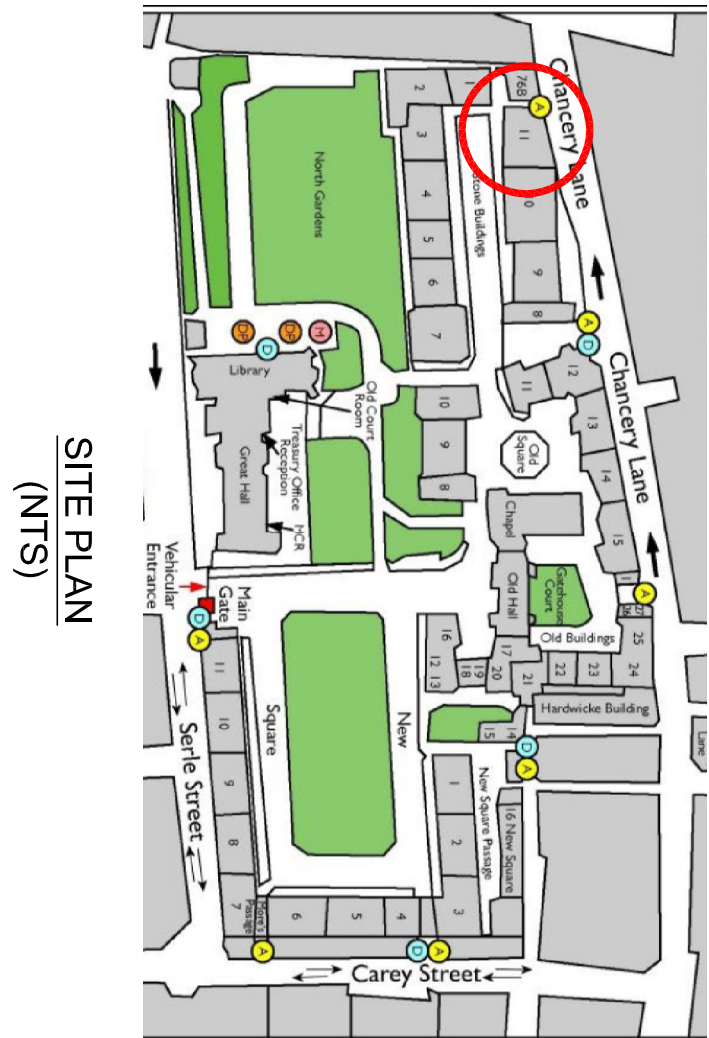
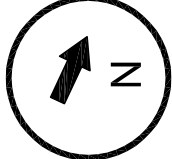
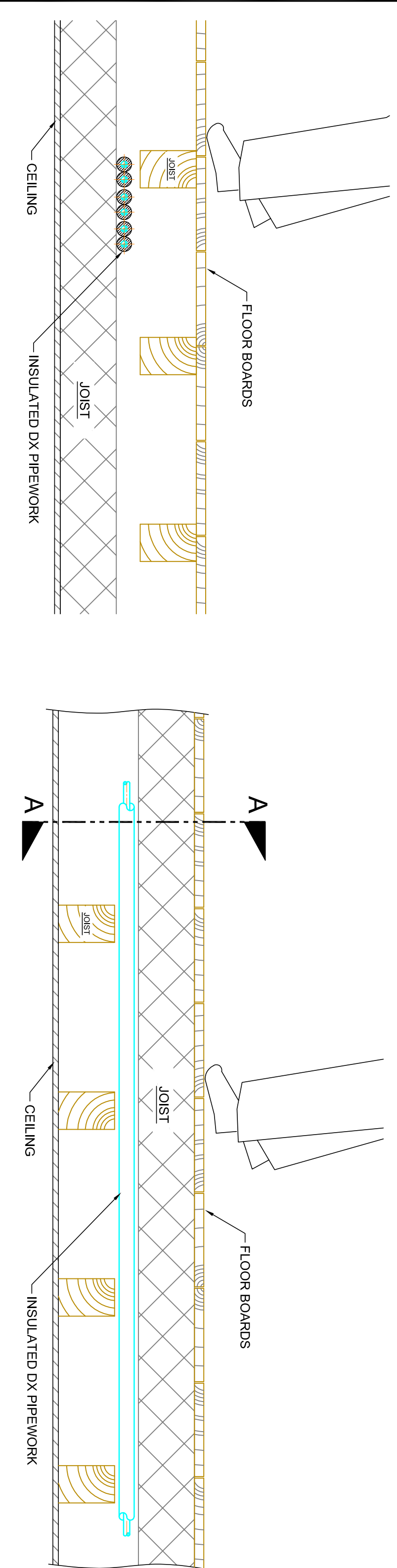


NOTES

- 1 THIS DRAWING TO BE READ IN CONJUNCTION WITH ARCHITECTURAL AND OTHER RELATED DRAWINGS
- 2 DO NOT SCALE THIS DRAWING
- 3 FOR THE PURPOSE OF COORDINATION ALL RELEVANT PARTIES MUST CHECK THIS INFORMATION PRIOR TO IMPLEMENTATION AND REPORT ANY DISCREPANCIES TO THE ENGINEER
- 4 ALL MEASUREMENTS TO BE VERIFIED ON SITE
- 5 ALL PLANT AND EQUIPMENT TO BE INSTALLED IN ACCORDANCE WITH MANUFACTURERS RECOMMENDATIONS INCLUDING ADEQUATE SPACE FOR MAINTENANCE AND REPLACEMENT



SITE PLAN  
(NTS)

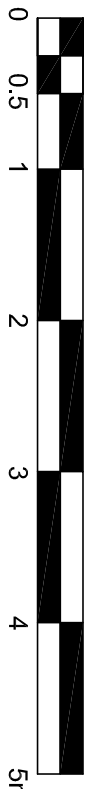


SECTION A-A  
1:10@A1

PIPEWORK IN FLOOR  
TYPICAL DETAIL  
1:10@A1

NOTE:  
NEW PIPEWORK TO RUN PRIMARILY IN FLOOR VOID BETWEEN JOISTS WHERE VOID IS NOT PRESENT NEW PIPEWORK TO FOLLOW ROUTE OF EXISTING HEATING PIPES WHERE POSSIBLE NOTCHING OF JOISTS FOR NEW PIPE ROUTES TO BE KEPT TO A MINIMUM.

LEGEND	
FB	FROM BELOW
TA	TO ABOVE
FA	FROM ABOVE
TB	TO BELOW
ROOM CONTROLLER	
VOLUME CONTROL DAMPER	
CENTRAL CONTROLLER	
(CONT-B)	
DX PIPEWORK AT HIGH LEVEL	
DX PIPEWORK IN FLOOR VOID	
SUPPLY DUCTWORK	
RETURN AIR DUCTWORK	
LINEAR GRILLE	
(FCU-B-0.13)	FAN COIL UNIT (CEILING MOUNTED)
(FCU-B-0.06)	FAN COIL UNIT (FLOOR STANDING)
MCU-BZ2	MODE CONTROL UNIT
MCU-BZ2	ELECTRIC HEATER IN CASING TO MATCH AC UNIT CASING
PL	PLENUM CONNECTION TO GRILLE
COND	CONDENSER



Rev	Date	Drawn	Issue
P0	27.06.16	WJ	FOR INFORMATION

Drawing Status FOR INFORMATION



**centreline**  
Building Services Consultants

Studio C3 East Gates  
Salmons Lane  
Coggeshall  
Essex, CO6 1RZ

Tel: 01376 561133  
E-mail: info@centreline-aura.com  
GAIL CARBON  
LOW PRESSURES

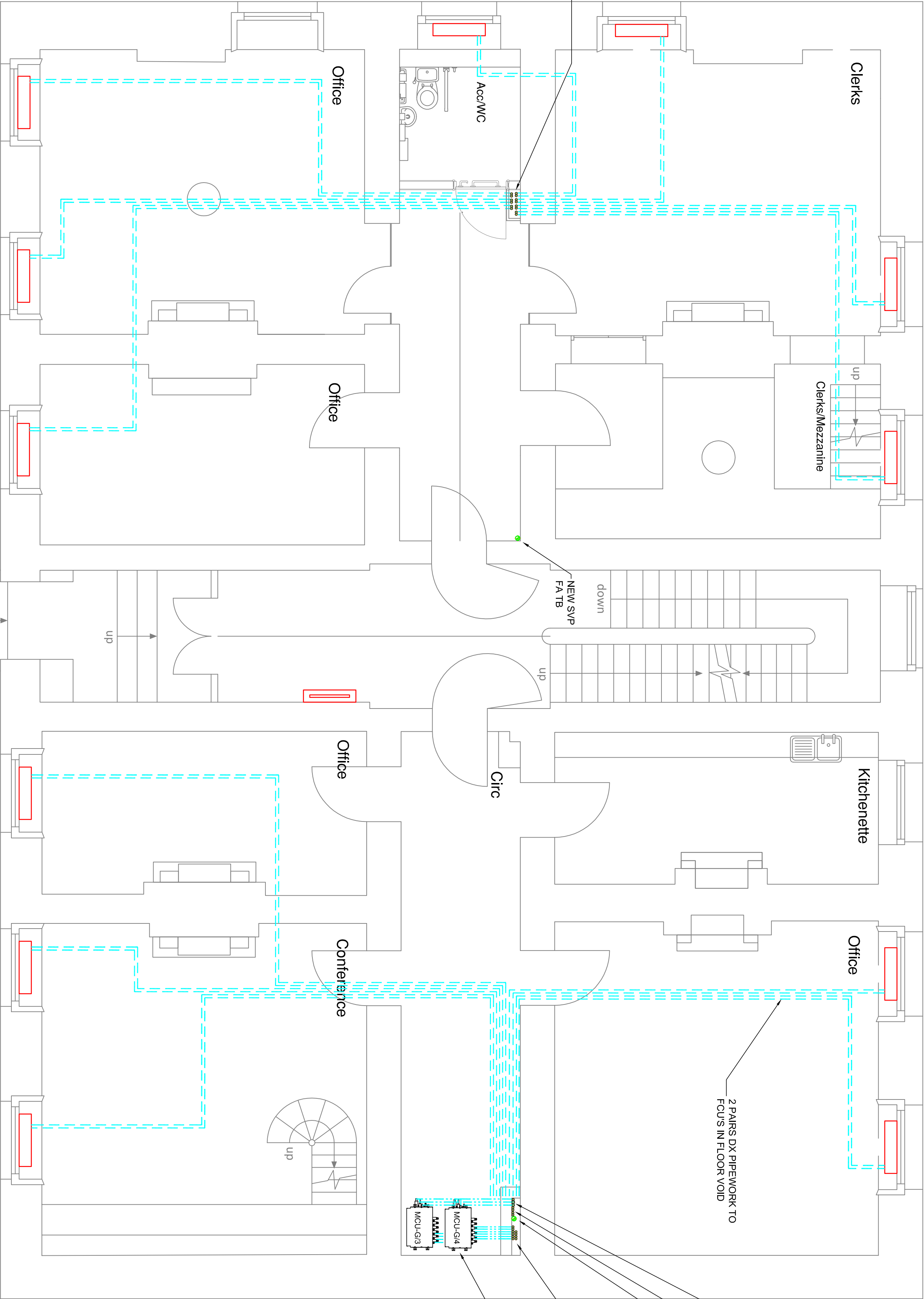


Client  
THE HONOURABLE SOCIETY  
OF LINCOLNS INN

Project  
LINCOLNS INN  
11 STONE BUILDINGS  
LONDON, WC2A 3TG

Title  
GROUND FLOOR  
AC LAYOUT

FAN COIL UNIT PLAN  
1:50@A1



PIPE RISER FROM ABOVE TO GROUND FLOOR FLOOR VOID

2 PAIRS DX PIPEWORK TO FLOORS IN FLOOR VOID

GROUND FLOOR PIPEWORK FA TO BULKHEAD  
BASEMENT PIPEWORK FA TB  
SERVER ROOM PIPEWORK FA TB  
NEW SVF FA TB

5 PAIRS DX PIPEWORK AT HL DROP TO FLOOR VOID

MCU BOXES AT HL IN BULKHEAD

MCU-GS4  
MCU-GS4  
MCU-GS3