

Drawing No.
1224-0200-AL-001

Rev
P5

Drawing Title
PROPOSED PLANS LOWER GROUND FLOOR

LEGEND:-

PLANT FOOTPRINT

RISER ABOVE

SERVICE ROUTES/CONNECTIONS

| | | |
|----------------|----------|------------------------|
| P01 | 03.05.16 | STAGE 2 CONCEPT REPORT |
| Rev | Date | Description |
| Drawing Status | | |

INFORMATION

Client

Architect

Project

Drawing Title

COMBINED SERVICES
BLOCK PLAN
LOWER GROUND FLOOR

| | | | |
|-------------|----------|-------------|---------|
| Drawn By | SC | Checked By | NB |
| Date | 27.04.16 | Scale | 1:50@A1 |
| Project No. | 151143 | Drawing No. | C001 |
| | | Rev | P01 |

Milieu Consult

Engineer| Energy| Environment

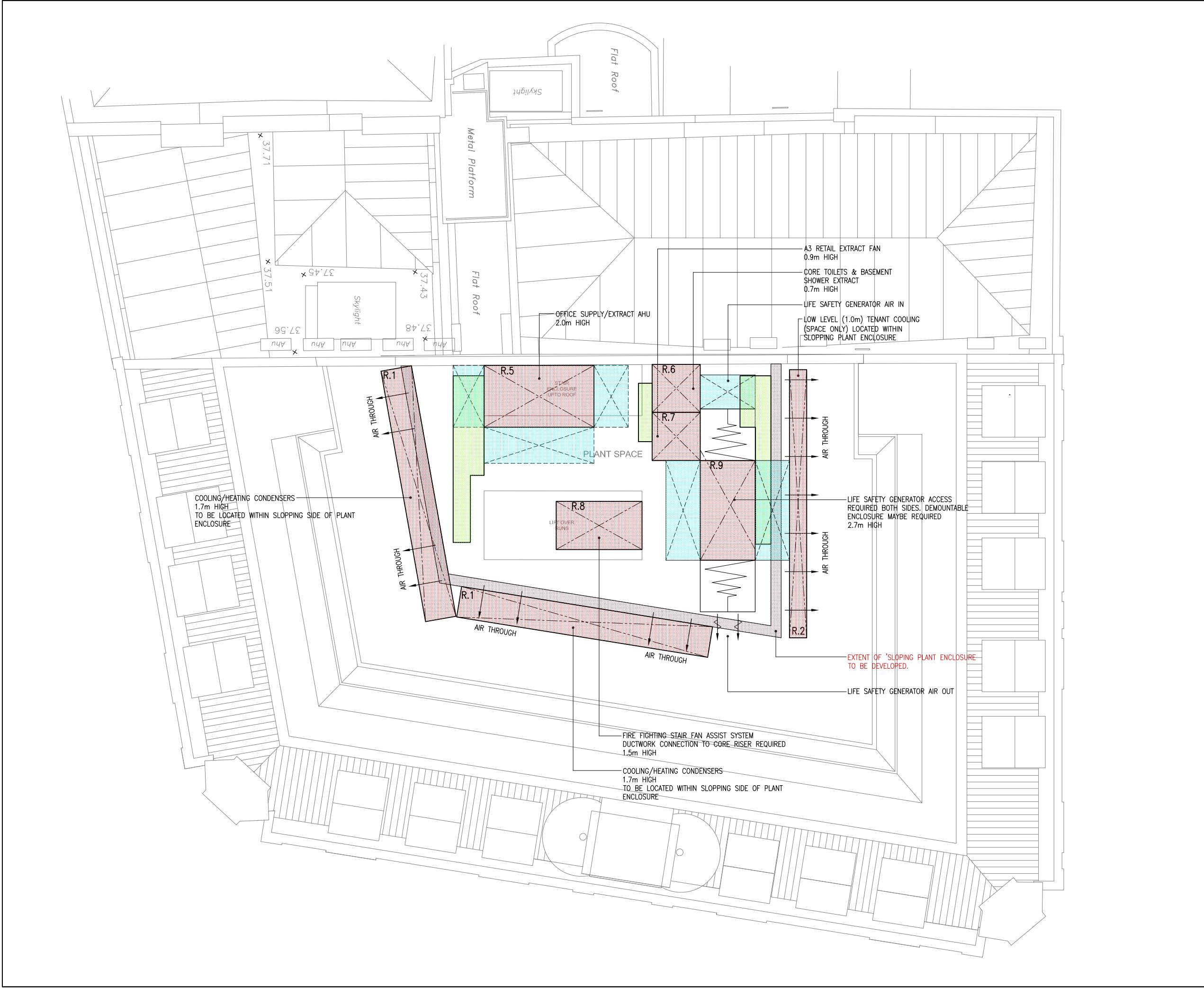
Milieu Consult Limited | 90 Cannon Street | London | EC4N 6HA | t: +44 (0) 20 7183 3943

Milieu Consult Limited | 1 Winnall Valley Road | Winchester | Hampshire | SO23 0LD | t: +44 (0) 1962 600 137

e: info@milieuconsult.com

w: www.milieuconsult.com

© COPYRIGHT MILIEU CONSULT LIMITED 2016



MILIEU CONSULT DRAWING IS DERIVED FROM THE FOLLOWING DRAWINGS:-

| Drawing No. | Rev | Drawing Title |
|------------------|-----|----------------------------|
| 1224-0200-AL-011 | P5 | PROPOSED PLANS NINTH FLOOR |

LEGEND:-

- PLANT FOOTPRINT
- PLANT ACCESS/OPERATIONAL SPACE
- RISER BELOW

| P01 | 03.05.16 | STAGE 2 CONCEPT REPORT |
|-----|----------|------------------------|
| Rev | Date | Description |

Client: **GMS**

Architect: **EMRYS**

Project: **KINGSWAY HOUSE LONDON**

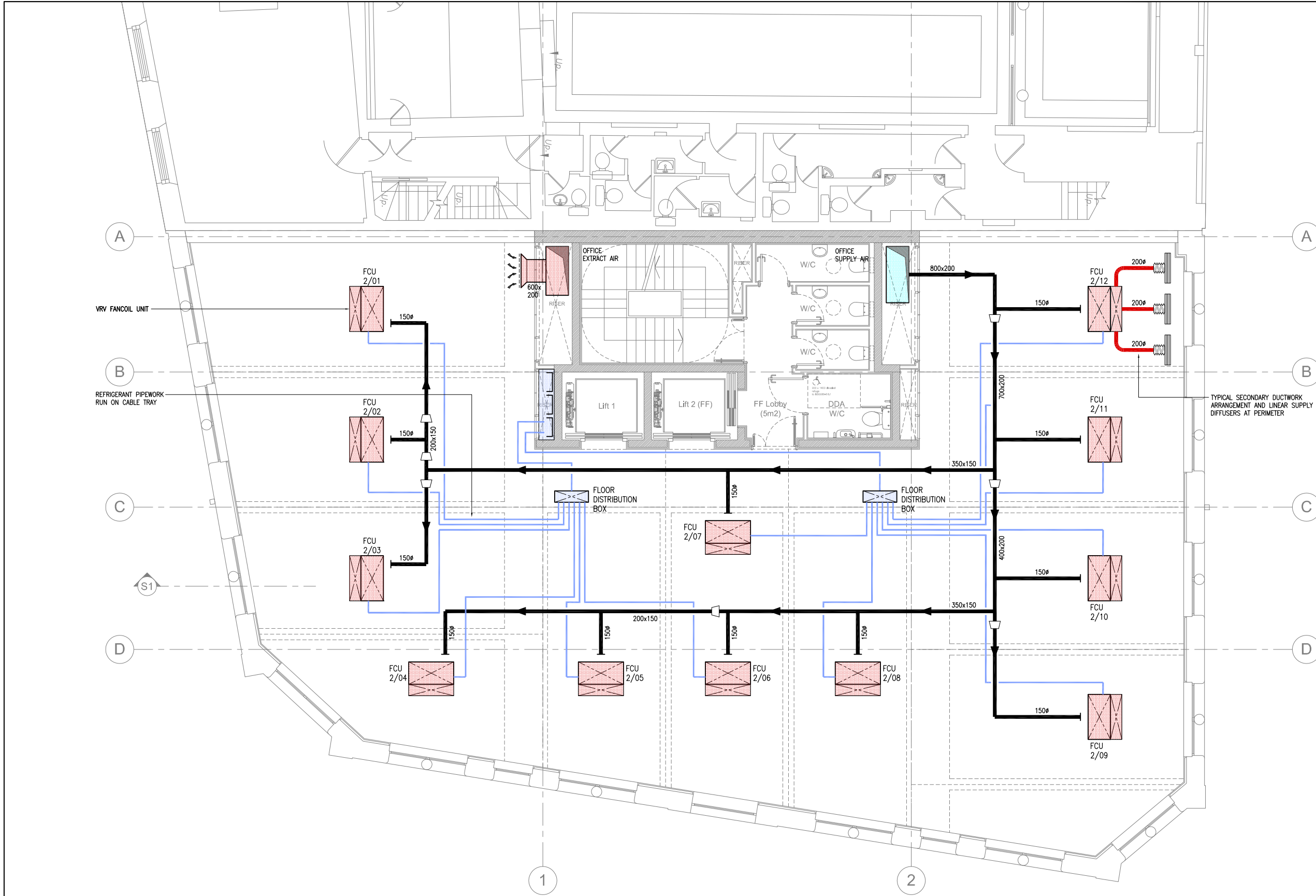
Drawing Title: **COMBINED SERVICES BLOCK PLAN NINTH FLOOR**

| Drawn By | SC | Checked By | NB |
|----------|----------|------------|---------|
| Date | 21.03.16 | Scale | 1:50@A1 |

| Project No. | Drawing No. | Rev |
|-------------|-------------|-----|
| 151143 | C002 | P01 |

Milieu Consult
Engineer| Energy| Environment
Milieu Consult Limited | 90 Cannon Street | London | EC4N 6HA | t: +44 (0) 20 7183 3943
Milieu Consult Limited | 1 Winnall Valley Road | Winchester | Hampshire | SO23 0LD | t: +44 (0) 1962 600 137
e: info@milieuconsult.com w: www.milieuconsult.com

© COPYRIGHT MILIEU CONSULT LIMITED 2016



MILIEU CONSULT DRAWING IS DERIVED FROM THE FOLLOWING DRAWINGS:-

| Drawing No. | Rev | Drawing Title |
|------------------|-----|-----------------------------|
| 1224-0200-AL-004 | P4 | PROPOSED PLANS SECOND FLOOR |

LEGEND:-

- SECONDARY DUCTWORK
- REFRIGERANT PIPEWORK
- PRIMARY SUPPLY AIR DUCTWORK

| PO1 | 03.05.16 | STAGE 2 CONCEPT REPORT |
|-----|----------|------------------------|
| Rev | Date | Description |

Information

Client: GMS LIMITED

Architect: EMRYS

Project: KINGSWAY HOUSE LONDON

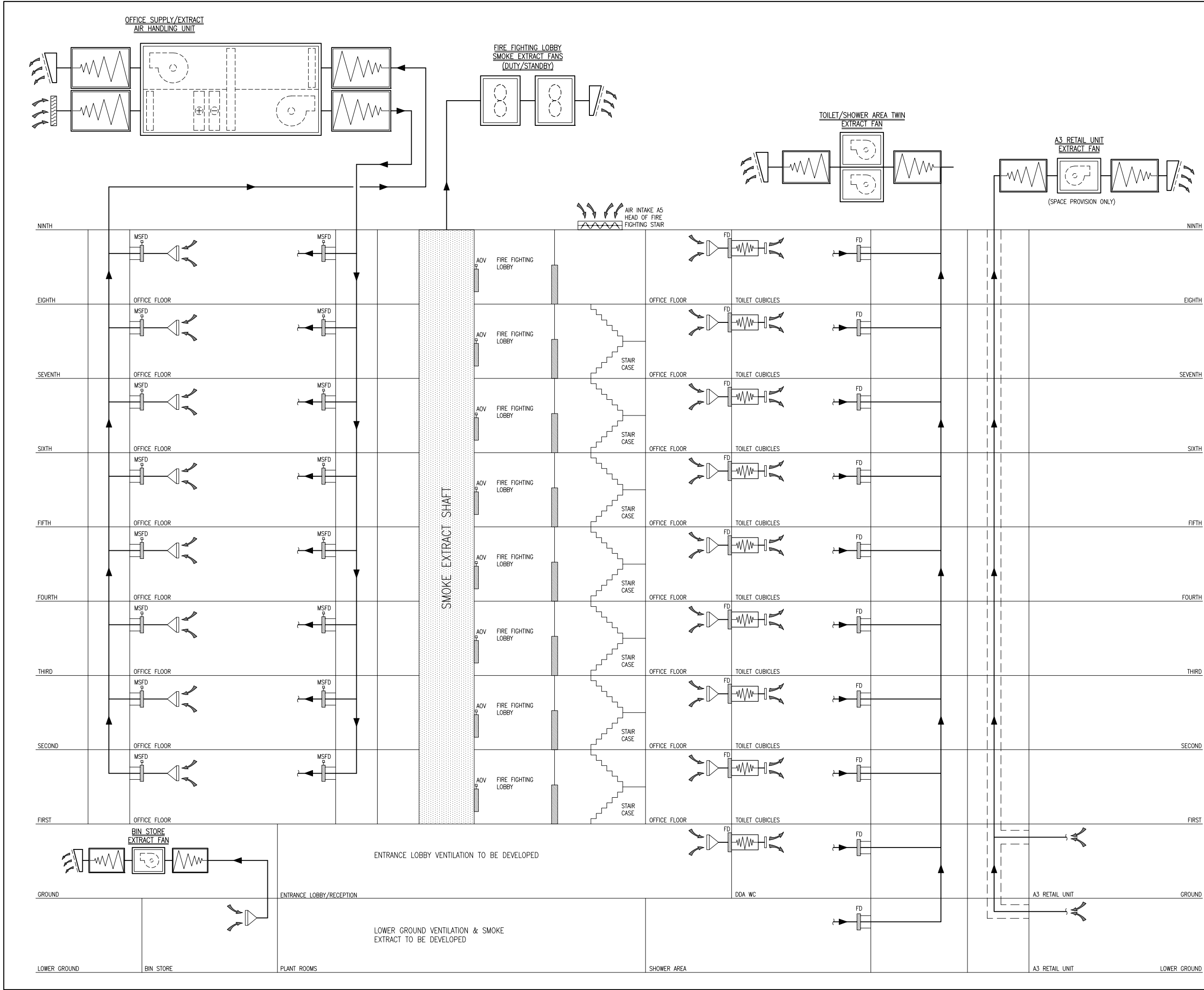
Drawing Title: COMBINED SERVICES BLOCK PLAN TYPICAL FLOOR

| Drawn By | SC | Checked By | NB |
|----------|----------|------------|---------|
| Date | 27.04.16 | Scale | 1:50@A1 |

| Project No. | Drawing No. | Rev |
|-------------|-------------|-----|
| 151143 | C004 | P01 |

Milieu Consult
Engineer| Energy| Environment
Milieu Consult Limited | 90 Cannon Street | London | EC4N 6HA | t: +44 (0) 20 7183 3943
Milieu Consult Limited | 1 Winnall Valley Road | Winchester | Hampshire | SO23 0LD | t: +44 (0) 1962 600 137
e: info@milieuconsult.com w: www.milieuconsult.com

© COPYRIGHT MILIEU CONSULT LIMITED 2016



MILIEU CONSULT DRAWING IS DERIVED FROM THE FOLLOWING DRAWINGS:-

| Drawing No. | Rev | Drawing Title |
|-------------|-----|---------------|
| | | |
| | | |
| | | |

NOTES:-

- THIS DRAWING IS TO BE READ IN CONJUNCTION WITH THE ASSOCIATED SPECIFICATIONS AND ALL OTHER MECHANICAL, ELECTRICAL AND PUBLIC HEALTH DRAWINGS FOR THIS CONTRACT.
- DO NOT SCALE FROM THIS DRAWING.

| P01 | 03.05.16 | STAGE 2 CONCEPT REPORT |
|-----|----------|------------------------|
| Rev | Date | Description |
| | | |

Drawing Status

Client

Architect

Project

KINGSWAY HOUSE
LONDON

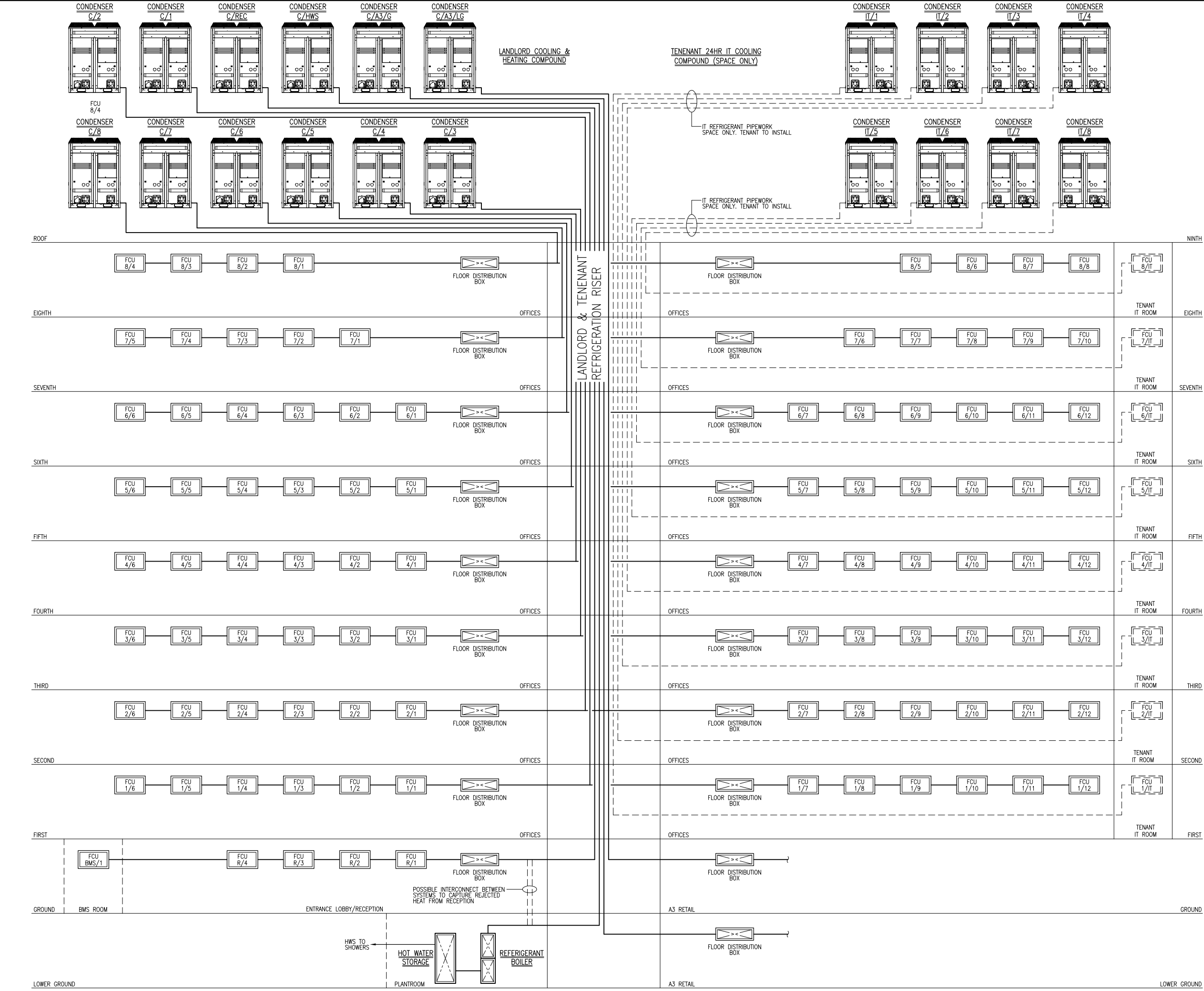
Drawing Title

MECHANICAL SERVICES
VENTILATION
SCHEMATIC

| Drawn By | SC | Checked By | NB |
|-------------|----------|-------------|--------|
| Date | 22.04.16 | Scale | NTS@A1 |
| Project No. | 151143 | Drawing No. | M001 |
| | | Rev | P01 |

Milieu Consult
Engineer| Energy| Environment
Milieu Consult Limited | 90 Cannon Street | London | EC4N 6HA | t: +44 (0) 20 7183 3943
Milieu Consult Limited | 1 Winnall Valley Road | Winchester | Hampshire | SO23 0LD | t: +44 (0) 1962 600 137
e: info@milieuconsult.com w: www.milieuconsult.com

© COPYRIGHT MILIEU CONSULT LIMITED 2016



MILIEU CONSULT DRAWING IS DERIVED FROM THE FOLLOWING DRAWINGS:-

| Drawing No. | Rev | Drawing Title |
|-------------|-----|---------------|
| | | |
| | | |
| | | |

NOTES:-

1. THIS DRAWING IS TO BE READ IN CONJUNCTION WITH THE ASSOCIATED SPECIFICATIONS AND ALL OTHER MECHANICAL, ELECTRICAL AND PUBLIC HEALTH DRAWINGS FOR THIS CONTRACT.

2. DO NOT SCALE FROM THIS DRAWING.

| | | |
|-----|----------|------------------------|
| P01 | 03.05.16 | STAGE 2 CONCEPT REPORT |
| Rev | Date | Description |

Drawing Status

Client

Architect

Project

Drawing Title

MECHANICAL SERVICES
HEATING & COOLING
SCHEMATIC

| | | | |
|-------------|----------|-------------|--------|
| Drawn By | SC | Checked By | NB |
| Date | 26.04.16 | Scale | NTS@A1 |
| Project No. | 151143 | Drawing No. | M002 |
| | | Rev | P01 |

Milieu Consult
Engineer| Energy| Environment

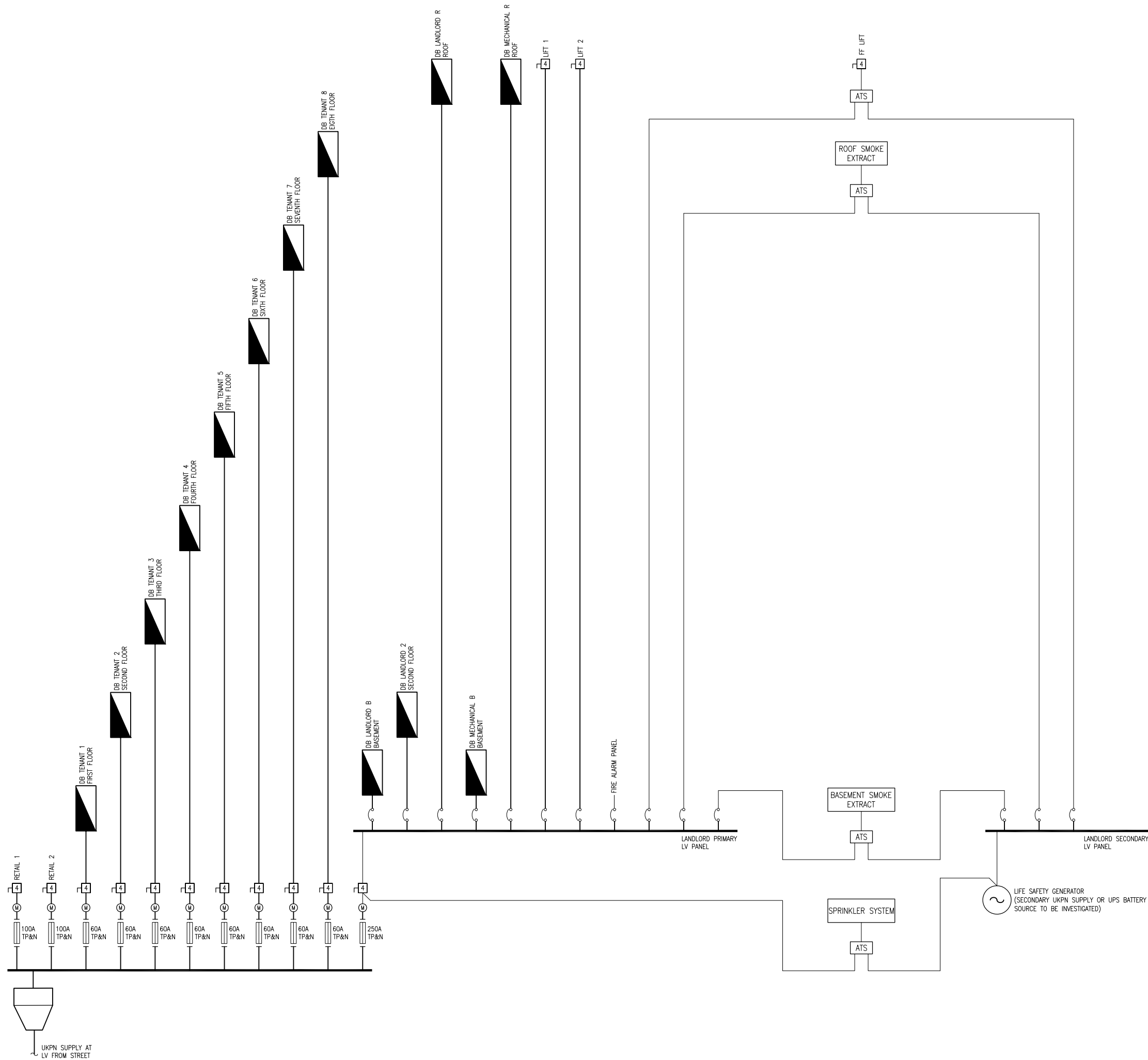
Milieu Consult Limited | 90 Cannon Street | London | EC4N 6HA | t: +44 (0) 20 7183 3943

Milieu Consult Limited | 1 Winnall Valley Road | Winchester | Hampshire | SO23 0LD | t: +44 (0) 1962 600 137

e: info@milieuconsult.com

w: www.milieuconsult.com

© COPYRIGHT MILIEU CONSULT LIMITED 2016



MILIEU CONSULT DRAWING IS DERIVED FROM THE FOLLOWING DRAWINGS:-

| Drawing No. | Rev | Drawing Title |
|-------------|-----|---------------|
| | | |
| | | |
| | | |

NOTES:-

- THIS DRAWING IS TO BE READ IN CONJUNCTION WITH THE ASSOCIATED SPECIFICATIONS AND ALL OTHER MECHANICAL, ELECTRICAL AND PUBLIC HEALTH DRAWINGS FOR THIS CONTRACT.
- DO NOT SCALE FROM THIS DRAWING.

| | | |
|-----|----------|------------------------|
| P01 | 03.05.16 | STAGE 2 CONCEPT REPORT |
| Rev | Date | Description |

Drawing Status

INFORMATION

Client



Architect



Project

KINGSWAY HOUSE
LONDON

Drawing Title

ELECTRICAL SERVICES
LV SCHEMATIC

| | | | |
|----------|----|------------|----|
| Drawn By | SC | Checked By | DS |
|----------|----|------------|----|

| | | | |
|------|----------|-------|--------|
| Date | 26.04.16 | Scale | NTS@A1 |
|------|----------|-------|--------|

| | | | | | |
|-------------|--------|-------------|------|-----|-----|
| Project No. | 151143 | Drawing No. | E001 | Rev | P01 |
|-------------|--------|-------------|------|-----|-----|

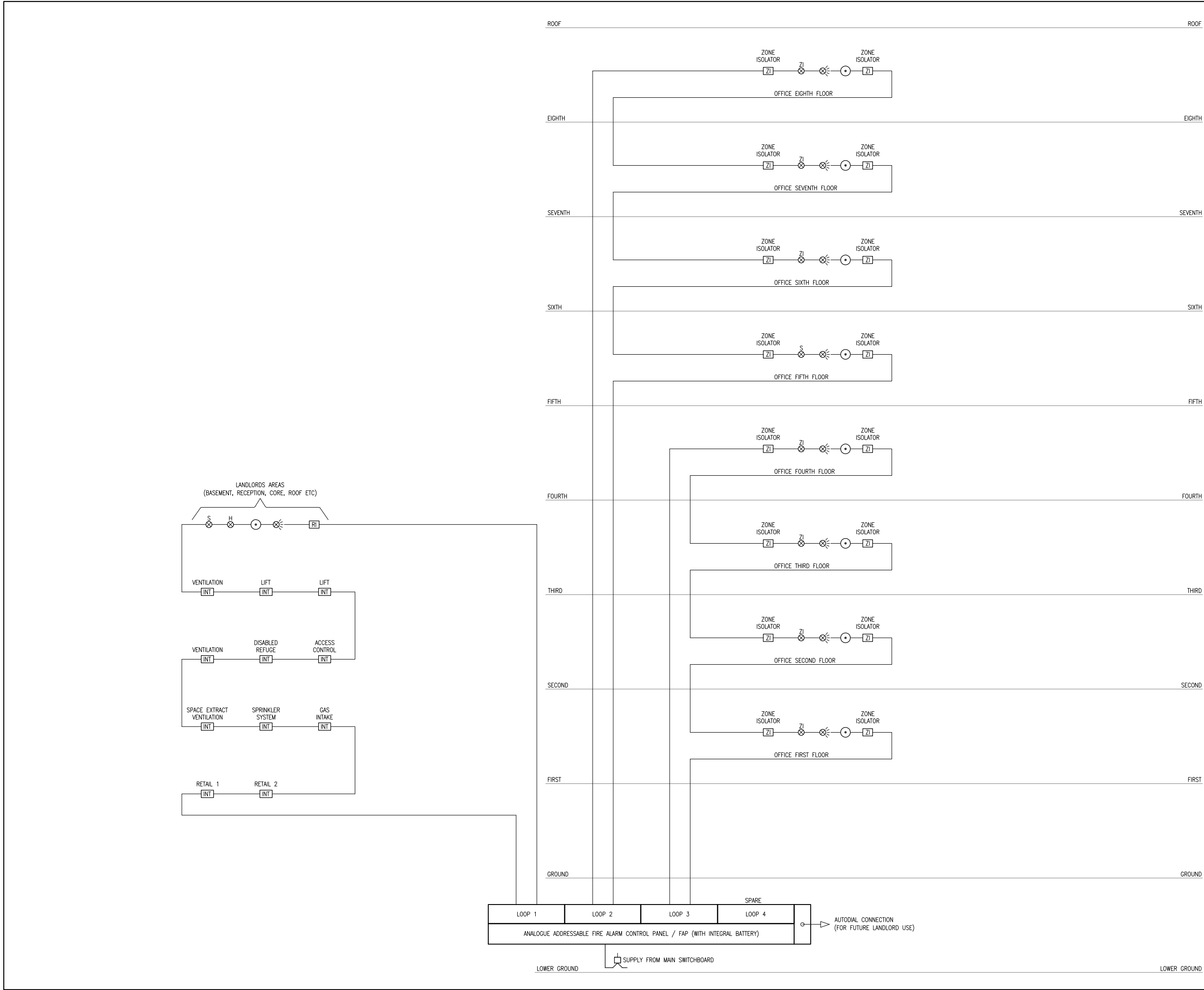
Milieu Consult

Engineer| Energy| Environment

Milieu Consult Limited | 90 Cannon Street | London |
EC4N 6HA | t: +44 (0) 20 7183 3943

Milieu Consult Limited | 1 Winnall Valley Road | Winchester |
Hampshire | SO23 0LD | t: +44 (0) 1962 600 137
e: info@milieuconsult.com w: www.milieuconsult.com

© COPYRIGHT MILIEU CONSULT LIMITED 2016



MILIEU CONSULT DRAWING IS DERIVED FROM THE FOLLOWING DRAWINGS:-

| Drawing No. | Rev | Drawing Title |
|-------------|-----|---------------|
| | | |
| | | |
| | | |
| | | |

NOTES:-

1. THIS DRAWING IS TO BE READ IN CONJUNCTION WITH THE ASSOCIATED SPECIFICATIONS AND ALL OTHER MECHANICAL, ELECTRICAL AND PUBLIC HEALTH DRAWINGS FOR THIS CONTRACT.

2. THIS SCHEMATIC IS INDICATIVE ONLY AND INTENDED TO SHOW THE GENERAL TOPOLOGY OF THE PROPOSED FIRE ALARM SYSTEM. THE CONTRACTOR SHALL DEVELOP THE FIRE ALARM SYSTEM TOPOLOGY AND QUANTITY OF DEVICES REQUIRED AS PART OF THE DETAIL DESIGN WORKS.

3. THE NUMBER OF LOOPS SHOWN ON THE FIRE ALARM PANEL IS INDICATIVE ONLY. A MINIMUM NUMBER OF FOUR LOOPS SHALL BE PROVIDED. ADDITIONAL LOOPS SHALL BE PROVIDED AS REQUIRED TO ACHIEVE THE DEVICE LOADINGS, MAX CABLE LENGTH LIMITS ETC.

4. DO NOT SCALE FROM THIS DRAWING.

| | | |
|-----|----------|------------------------|
| P01 | 03.05.16 | STAGE 2 CONCEPT REPORT |
| Rev | Date | Description |

Drawing Status

INFORMATION

Client

Architect

Project

KINGSWAY HOUSE
LONDON

Drawing Title

ELECTRICAL SERVICES
FIRE ALARM SCHEMATIC

| | | | |
|----------|----------|------------|--------|
| Drawn By | SC | Checked By | DS |
| Date | 26.04.16 | Scale | NTS@A1 |

| | | |
|-------------|-------------|-----|
| Project No. | Drawing No. | Rev |
| 151143 | E002 | P01 |

Milieu Consult

Engineer| Energy| Environment

Milieu Consult Limited | 90 Cannon Street | London | EC4N 6HA | t: +44 (0) 20 7183 3943

Milieu Consult Limited | 1 Winnall Valley Road | Winchester | Hampshire | SO23 0LD | t: +44 (0) 1962 600 137

e: info@milieuconsult.comw: www.milieuconsult.com

© COPYRIGHT MILIEU CONSULT LIMITED 2016



MILIEU CONSULT DRAWING IS DERIVED FROM THE FOLLOWING DRAWINGS:-

| Drawing No. | Rev | Drawing Title |
|-------------|-----|---------------|
| | | |
| | | |
| | | |

NOTES:-

1.

THIS DRAWING IS TO BE READ IN CONJUNCTION WITH THE ASSOCIATED SPECIFICATIONS AND ALL OTHER MECHANICAL, ELECTRICAL AND PUBLIC HEALTH DRAWINGS FOR THIS CONTRACT.

2.

DO NOT SCALE FROM THIS DRAWING.

LEGEND:-

BATH

-

BATH

DW

-

DISH WASHER

IM

-

ICE MACHINE

FR

-

FRIDGE

SH

-

SHOWER

SINK

-

SINK

SO

-

STEAM OVEN

WC

-

TOILET

WHB

-

WASH HAND BASIN

IV

-

ISOLATION VALVE

NRV

-

NON RETURN VALVE

PRV

-

PRESSURE REDUCING VALVE

BV

-

BLENDING VALVE

CV

-

CHECK VALVE

DOC

-

DRAIN COCK

DCV

-

DOUBLE CHECK VALVE

Str

-

STRAINER

PDV

-

PRIORITY DEMAND VALVE

ASV

-

ANTI-SHOCK VALVE

ERV

-

EXPANSION RELIEF VALVE

| | | |
|-----|----------|------------------------|
| P01 | 03.05.16 | STAGE 2 CONCEPT REPORT |
| Rev | Date | Description |

Drawing Status

INFORMATION

Client

Architect

Project

KINGSWAY HOUSE
LONDON

Drawing Title

PUBLIC HEALTH SERVICES
DOMESTIC WATER
DISTRIBUTION
SCHEMATIC

| | | | |
|----------|----------|------------|--------|
| Drawn By | MD | Checked By | NB |
| Date | 21.03.16 | Scale | NTS@A1 |

| | | | | | |
|-------------|--------|-------------|------|-----|-----|
| Project No. | 151143 | Drawing No. | P001 | Rev | P01 |
|-------------|--------|-------------|------|-----|-----|

Milieu Consult

Engineer| Energy| Environment

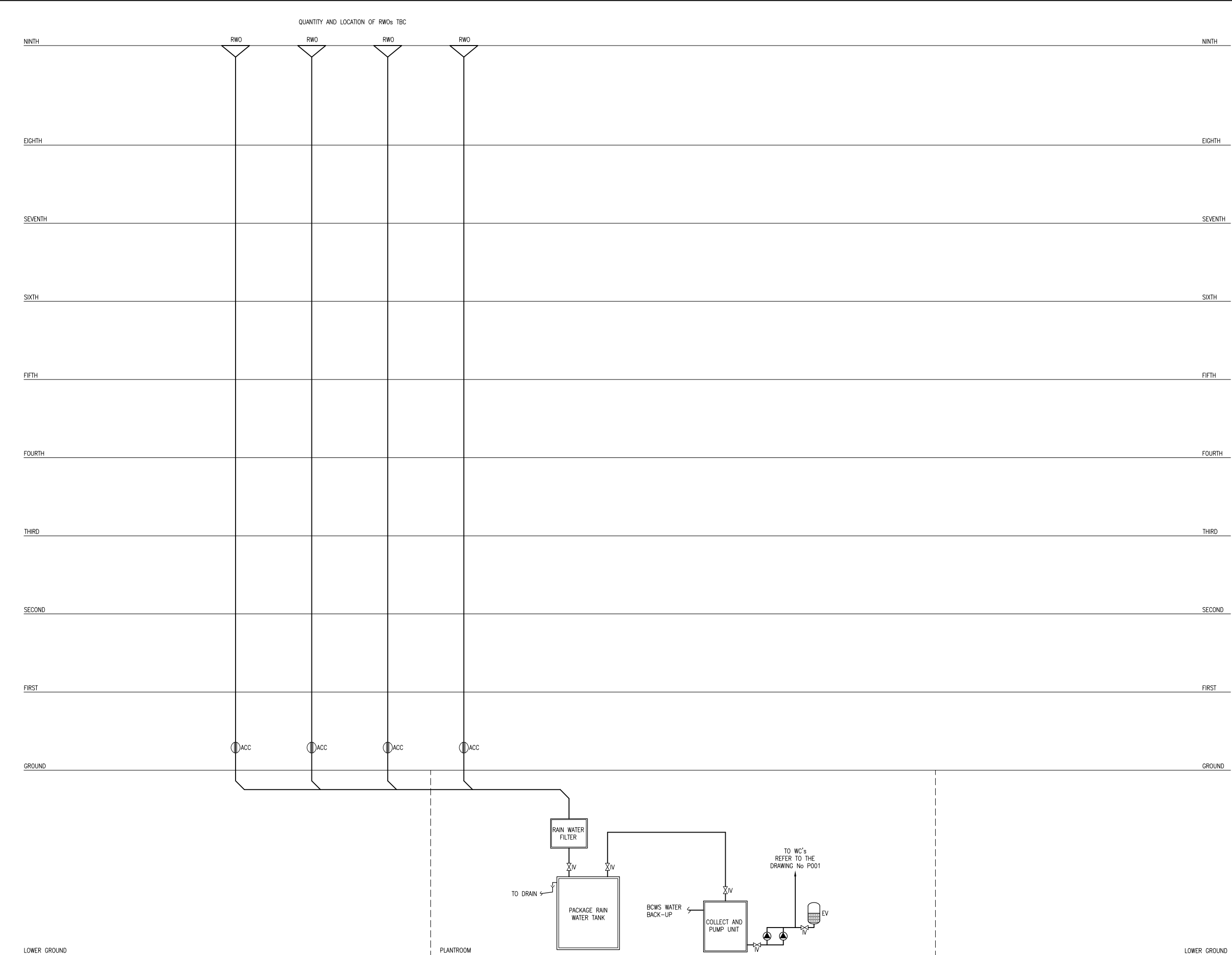
Milieu Consult Limited | 90 Cannon Street | London | EC4N 6HA | t: +44 (0) 20 7183 3943

Milieu Consult Limited | 1 Winnall Valley Road | Winchester | Hampshire | SO23 0LD | t: +44 (0) 1962 600 137

e: info@milieuconsult.com

w: www.milieuconsult.com

© COPYRIGHT MILIEU CONSULT LIMITED 2016



MILIEU CONSULT DRAWING IS DERIVED FROM THE FOLLOWING DRAWINGS:-

| Drawing No. | Rev | Drawing Title |
|-------------|-----|---------------|
| | | |
| | | |
| | | |
| | | |

NOTES:-

- THIS DRAWING IS TO BE READ IN CONJUNCTION WITH THE ASSOCIATED SPECIFICATIONS AND ALL OTHER MECHANICAL, ELECTRICAL AND PUBLIC HEALTH DRAWINGS FOR THIS CONTRACT
- DO NOT SCALE FROM THIS DRAWING.

LEGEND:-

| | | |
|------|---|--------------------------------|
| SVP | - | SOIL VENT PIPE |
| WVP | - | WASTE VENT PIPE |
| ASP | - | ANTI SYPHON PIPE |
| AAAV | - | AUTOMATIC AIR ADMITTANCE VALVE |
| D/W | - | DISHWASHER |
| W/M | - | WASHING MACHINE |
| A/C | - | ACCESS CAP |
| RE | - | RODDING EYE |
| WC | - | WATER CLOSET |
| SH | - | SHOWER |
| WHB | - | WASH HAND BASIN |
| CTD | - | CONNECT TO DRAIN |
| VP | - | VENT PIPE |
| SS | - | STUB STACK |
| G | - | GULLEY |

| | | |
|-----|----------|------------------------|
| P01 | 03.05.16 | STAGE 2 CONCEPT REPORT |
| Rev | Date | Description |

Drawing Status

INFORMATION

Client

GMS
UNIVERSITY
LIMITED

Architect

EMRYS

Project

KINGSWAY HOUSE
LONDON

Drawing Title

PUBLIC HEALTH SERVICES
RAIN WATER HARVESTING
& DISTRIBUTION
SCHEMATIC

| | | | | | |
|-------------|----------|-------------|--------|-----|-----|
| Drawn By | MD | Checked By | NB | | |
| Date | 21.03.16 | Scale | NTS@A1 | | |
| Project No. | 151143 | Drawing No. | P002 | Rev | P01 |

Milieu Consult

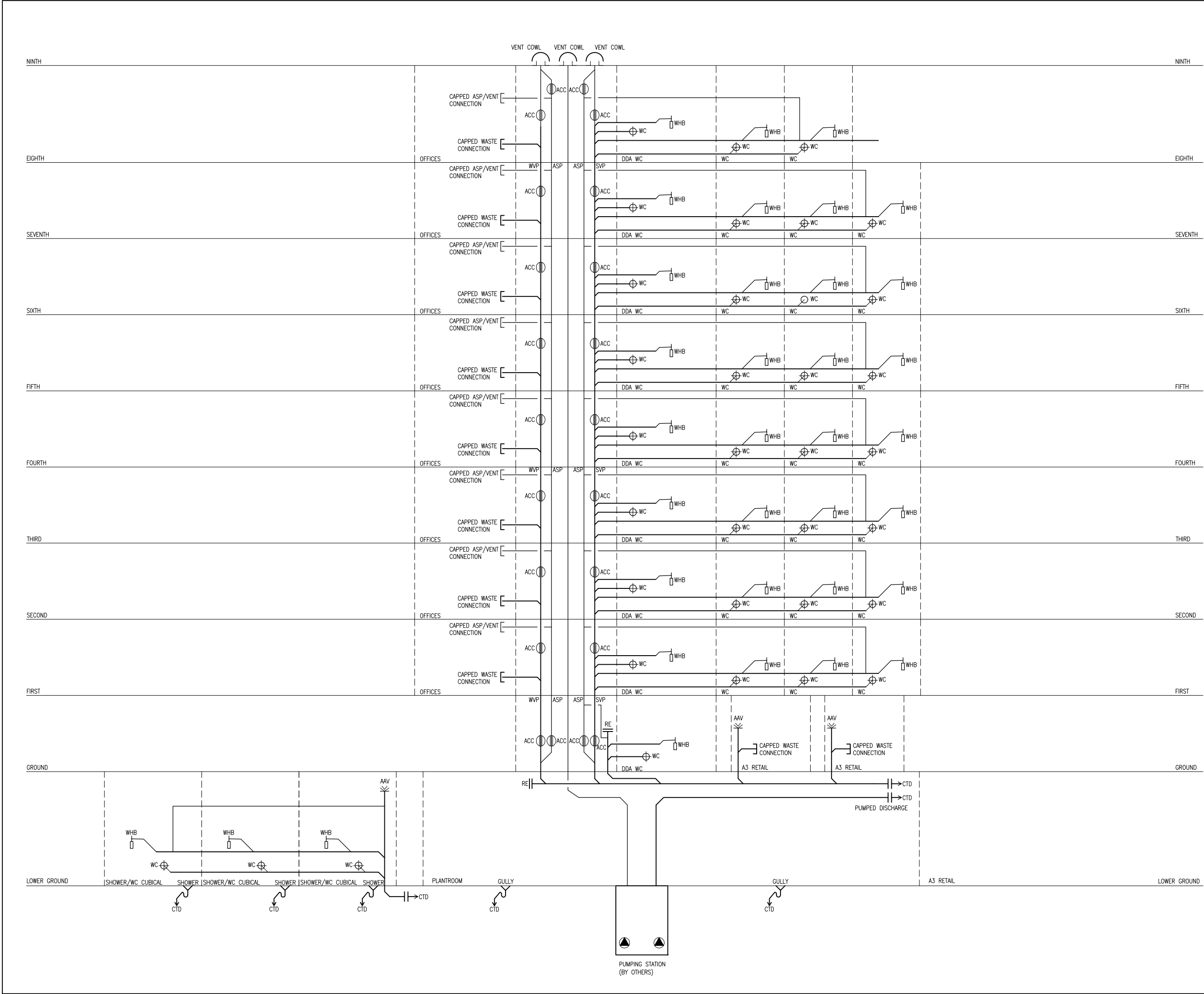
Engineer| Energy| Environment

Milieu Consult Limited | 90 Cannon Street | London | EC4N 6HA | t: +44 (0) 20 7183 3943

Milieu Consult Limited | 1 Winnall Valley Road | Winchester | Hampshire | SO23 0LD | t: +44 (0) 1962 600 137

e: info@milieuconsult.comw: www.milieuconsult.com

© COPYRIGHT MILIEU CONSULT LIMITED 2016



MILIEU CONSULT DRAWING IS DERIVED FROM THE FOLLOWING DRAWINGS:-

| Drawing No. | Rev | Drawing Title |
|-------------|-----|---------------|
| | | |
| | | |
| | | |

NOTES:-

1.

THIS DRAWING IS TO BE READ IN CONJUNCTION WITH THE ASSOCIATED SPECIFICATIONS AND ALL OTHER MECHANICAL, ELECTRICAL AND PUBLIC HEALTH DRAWINGS FOR THIS CONTRACT

2.

DO NOT SCALE FROM THIS DRAWING.

LEGEND:-

SVP

-

SOIL VENT PIPE

WVP

-

WASTE VENT PIPE

ASP

-

ANTI SYPHON PIPE

AAAV

-

AUTOMATIC AIR ADMITTANCE VALVE

D/W

-

DISHWASHER

W/M

-

WASHING MACHINE

A/C

-

ACCESS CAP

RE

-

RODDING EYE

WC

-

WATER CLOSET

SH

-

SHOWER

WHB

-

WASH HAND BASIN

CTD

-

CONNECT TO DRAIN

VP

-

VENT PIPE

SS

-

STUB STACK

G

-

GULLY

| | | | |
|-----|----------|------------------------|--|
| P01 | 03.05.16 | STAGE 2 CONCEPT REPORT | |
| Rev | Date | Description | |

Drawing Status

INFORMATION

Client

Architect

Project

KINGSWAY HOUSE
LONDON

Drawing Title

PUBLIC HEALTH SERVICES
SOIL & WASTE
SCHEMATIC

| | | | |
|----------|----------|------------|--------|
| Drawn By | MD | Checked By | NB |
| Date | 21.03.16 | Scale | NTS@A1 |

| | | | | | |
|-------------|--------|-------------|------|-----|-----|
| Project No. | 151143 | Drawing No. | P003 | Rev | P01 |
|-------------|--------|-------------|------|-----|-----|

Milieu Consult

Engineer| Energy| Environment

Milieu Consult Limited | 90 Cannon Street | London | EC4N 6HA | t: +44 (0) 20 7183 3943

Milieu Consult Limited | 1 Winnall Valley Road | Winchester | Hampshire | SO23 0LD | t: +44 (0) 1962 600 137

e: info@milieuconsult.com

w: www.milieuconsult.com

© COPYRIGHT MILIEU CONSULT LIMITED 2016