

# One Bedford Avenue

With reference to Application 2014/6843/P

Discharge of Planning Condition 10

May 2016

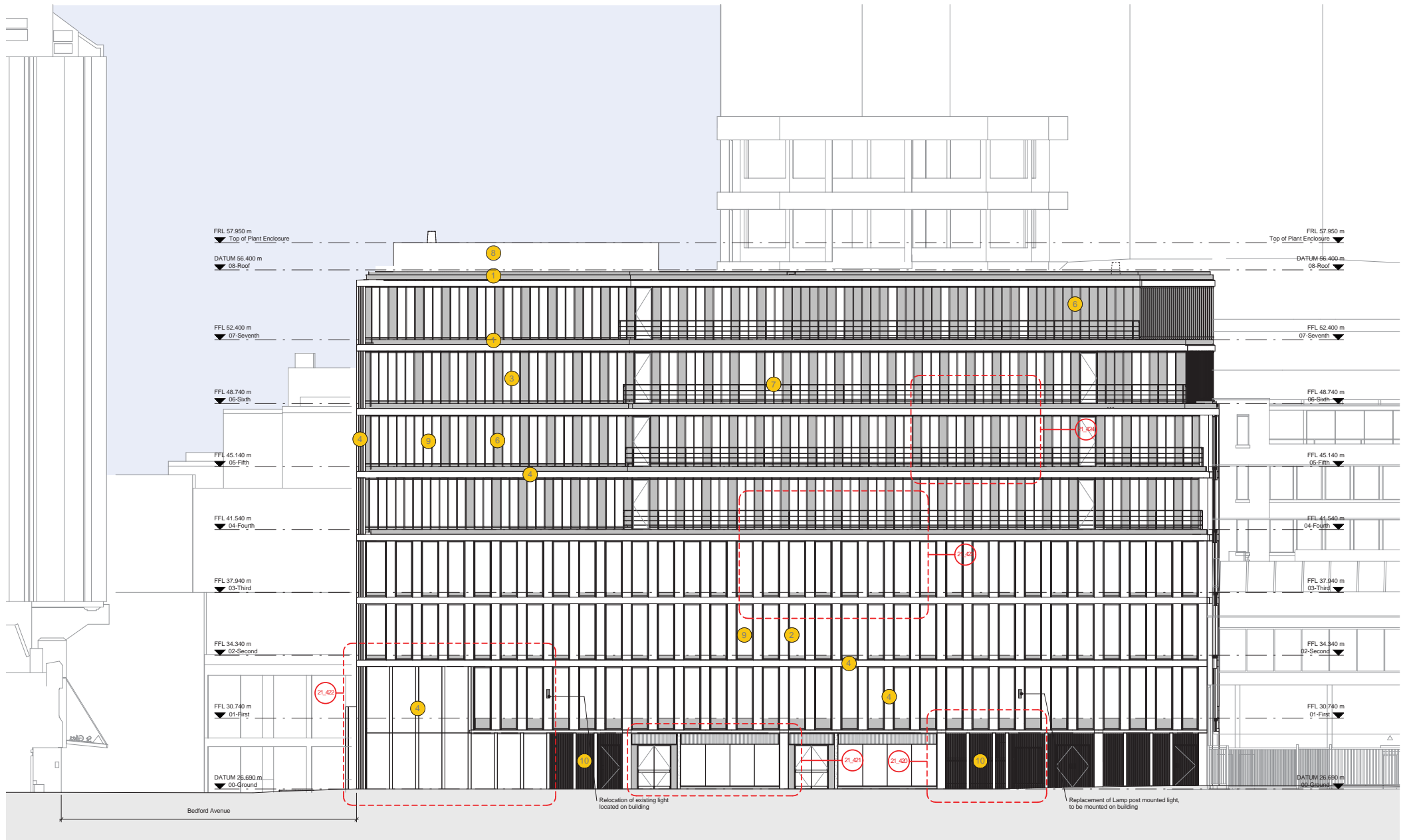




# 5.0

## MATERIAL SAMPLES AND LOCATIONS: DRAWINGS AND 3D'S

1	Sample 1	PPC coping / flashing
2	Sample 2	PPC double glazed unit
3	Sample 3	PPC capping
4	Sample 4	Reconstituted precast stone
5	Sample 5	Bronze anodised aluminium
6	Sample 6	Patinated zinc panel
7	Sample 7	Stainless steel balustrade
8	Sample 8	PPC aluminium grillage
9	Sample 9	Double glazed window
10	Sample 10	PPC aluminium flat plate architectural louvre



Revisions  
/ 160518 Issued for discharge of planning condition 10

By Chk  
KC DW

Revisions

By Chk

Notes

- 1 PPC coping / flashing
- 2 PPC double glazed unit
- 3 PPC double glazed capping
- 4 Reconstituted precast stone
- 5 Bronze anodised aluminium
- 6 Patinated zinc panel

- 7 Stainless steel balustrade
- 8 PPC aluminium plant grillage
- 9 Double glazed window
- 10 PPC aluminium flat plate architectural louvre

Relocation of existing light located on building

Replacement of Lamp post mounted light, to be mounted on building

**Bennetts Associates Architects**

1 Rawstorne Place London EC1V 7NL  
T +44 (0) 20 7520 3300 F +44 (0) 20 7520 3333  
E mail@bennettsassociates.com

For Bennetts Associates' electronic information use disclaimer -  
www.bennettsassociates.com/2012/02/02/electronic-information-use-disclaimer/

Project

**One Bedford Avenue**  
Exemplar Properties (Bedford) Ltd.

Project No. 1217

Drawing Title

Planning  
Morwell Street Elevation

Drawing Number  
1217\_P\_500

Revision

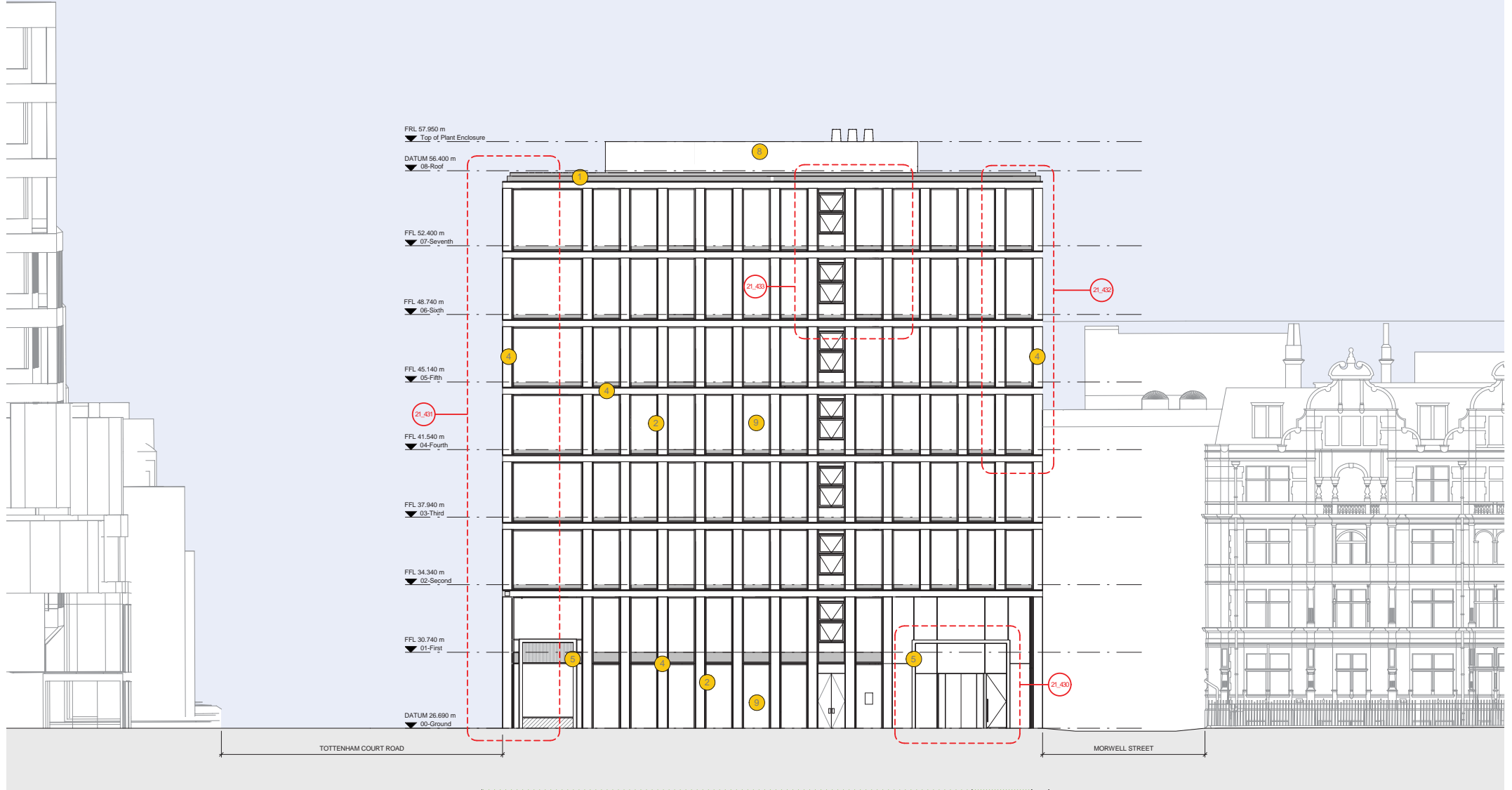
/

Scale @ A3  
1:200

Scale @ A1  
1:100

Revision Date  
160518

Y:\M\DD



Revisions	By	Chk	Revisions
/ 160518 Issued for discharge of planning condition 10	KC	DW	

By	Chk	Notes

- |   |                             |    |   |
|---|-----------------------------|----|---|
| 1 | PPC coping / flashing       | 7  | Stainless steel balustrade                    |
| 2 | PPC double glazed unit      | 8  | PPC aluminium plant grille                    |
| 3 | PPC double glazed capping   | 9  | Double glazed window                          |
| 4 | Reconstituted precast stone | 10 | PPC aluminium flat plate architectural louvre |
| 5 | Bronze anodised aluminium   |    |   |
| 6 | Patinated zinc panel        |    |   |

**Bennetts Associates Architects**  
 1 Rowntree Place London EC1V 7NL  
 T +44 (0) 20 7520 3300 F +44 (0) 20 7520 3333  
 E mail@bennettsassociates.com  
For Bennetts Associates' electronic information issue disclaimer -  
[www.bennettsassociates.com/information/privacy/](http://www.bennettsassociates.com/information/privacy/)

<p>Project  <b>One Bedford Avenue</b>          Exemplar Properties (Bedford) Ltd.</p>	<p>Drawing Title  <b>Planning</b>  <b>Bedford Avenue Elevation</b></p>	<p>Drawing Number  <b>1217_P_501</b></p>	<p>Revision          /</p>
<p>Scale @ A3          1: 100</p>	<p>Scale @ A1          1: 100</p>	<p>Revision Date          160518</p>	<p>Project No. 1217</p>





Revisions	By	Chk	Revisions
/ 160518 Issued for discharge of planning condition 10	KC	DW	

By	Chk	Notes

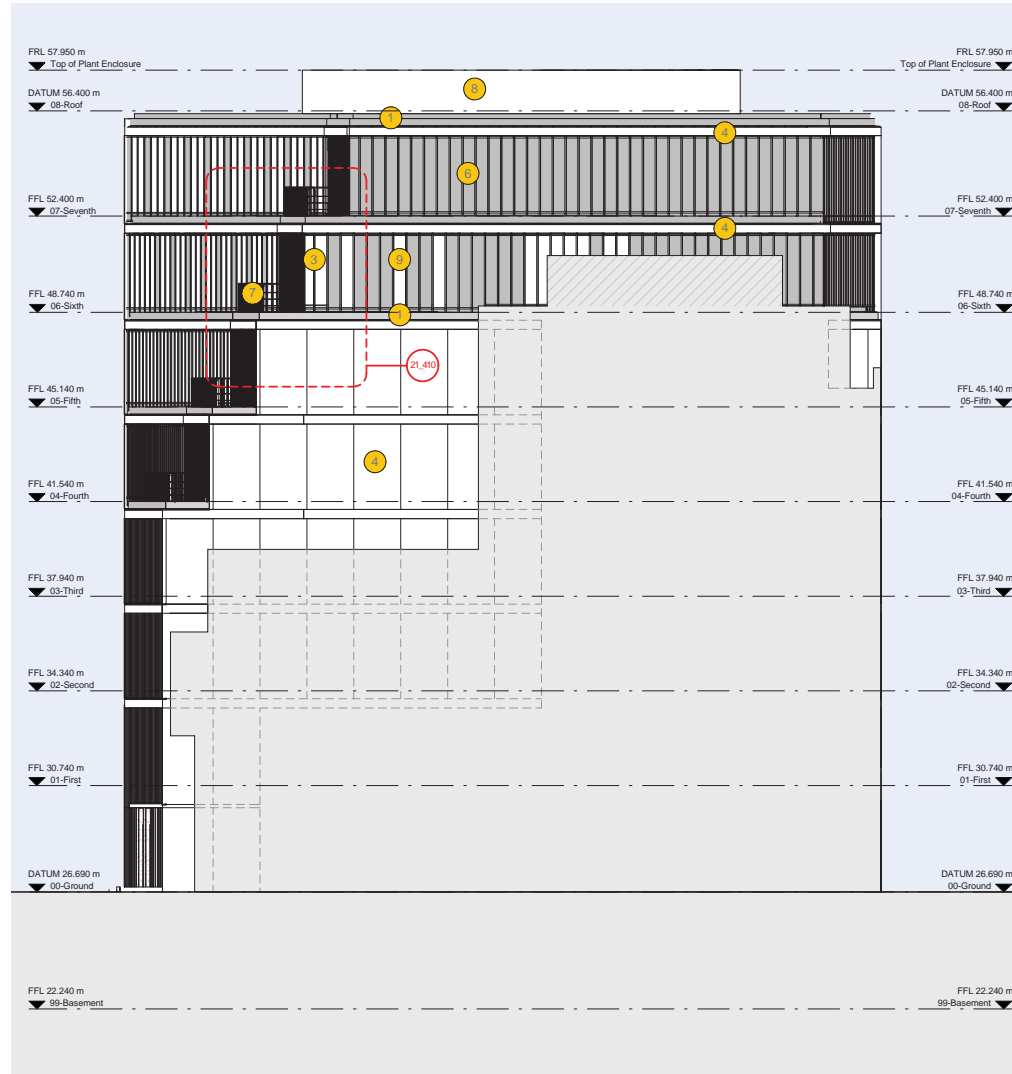
- |  |  |
|--|--|
| <ul style="list-style-type: none"> <li>1 PPC coping / flashing</li> <li>2 PPC double glazed unit</li> <li>3 PPC double glazed capping</li> <li>4 Reconstituted precast stone</li> <li>5 Bronze anodised aluminium</li> <li>6 Patinated zinc panel</li> </ul> | <ul style="list-style-type: none"> <li>7 Stainless steel balustrade</li> <li>8 PPC aluminium plant grillage</li> <li>9 Double glazed window</li> <li>10 PPC aluminium flat plate architectural louvre</li> </ul> |
|--|--|

**Bennetts Associates Architects**  
 1 Rawstorne Place London EC1V 7NL  
 T +44 (0) 20 7520 3300 F +44 (0) 20 7520 3333  
 E mail@bennettsassociates.com  
For Bennetts Associates' electronic information issue disclaimer - www.bennettsassociates.com/2012/02/01/electronic-information-issue-disclaimer/

Project  
**One Bedford Avenue**  
 Exemplar Properties (Bedford) Ltd.  
 Drawing Title  
 Planning  
 Tottenham Court Road Elevation

Drawing Number  
 1217\_P\_502  
 Revision  
 /  
 Scale @ A3  
 Scale @ A1  
 1 : 100  
 Revision Date  
 160518  
 YY MM DD  
 11 05 18

Project No. 1217



Revisions	By	Chk	Revisions	By	Chk	Notes
/ 160518 Issued for discharge of planning condition 10	KC	DW				

Notes
1 PPC coping / flashing
2 PPC double glazed unit
3 PPC double glazed capping
4 Reconstituted precast stone
5 Bronze anodised aluminium
6 Patinated zinc panel
7 Stainless steel balustrade
8 PPC aluminium plant grillage
9 Double glazed window
10 PPC aluminium flat plate architectural louvre

**Bennetts Associates Architects**  
 1 Rawstorne Place London EC1V 7NL  
 T +44 (0) 20 7520 3300 F +44 (0) 20 7520 3333  
 E mail@bennettsassociates.com  
 For Bennetts Associates' electronic information use disclaimer -  
[www.bennettsassociates.com/our-competence](http://www.bennettsassociates.com/our-competence)

Project  
**One Bedford Avenue**  
 Exemplar Properties (Bedford) Ltd.

Drawing Title  
 Planning  
 North Elevation

Drawing Number  
 1217\_P\_503

Revision  
 /

Scale @ A3  
 1 : 200

Scale @ A1  
 1 : 100

Revision Date  
 160518

Project No. 1217

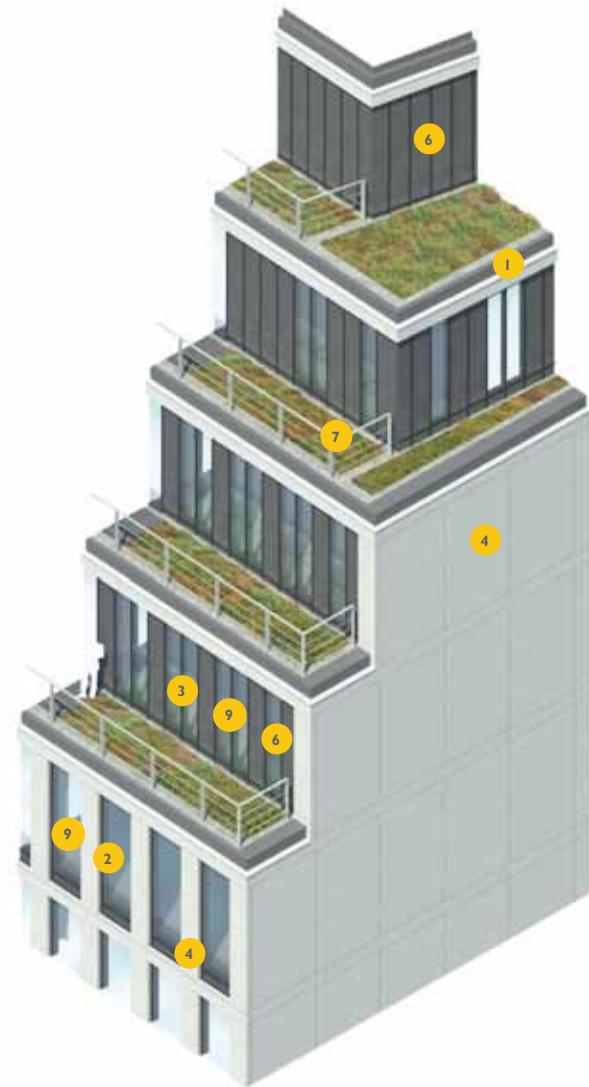
YV MM DD

Green / brown roofs  
750 curtain walling

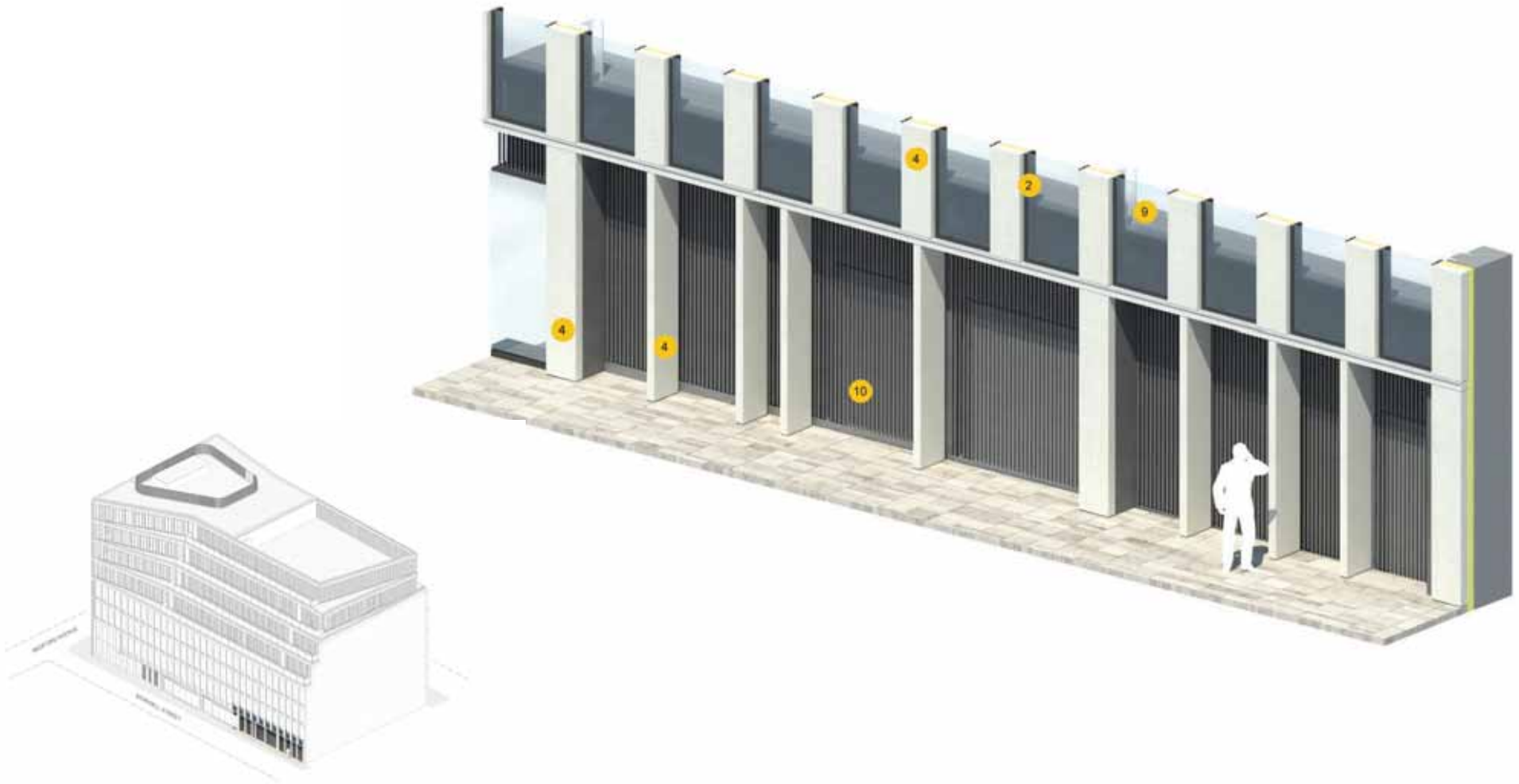




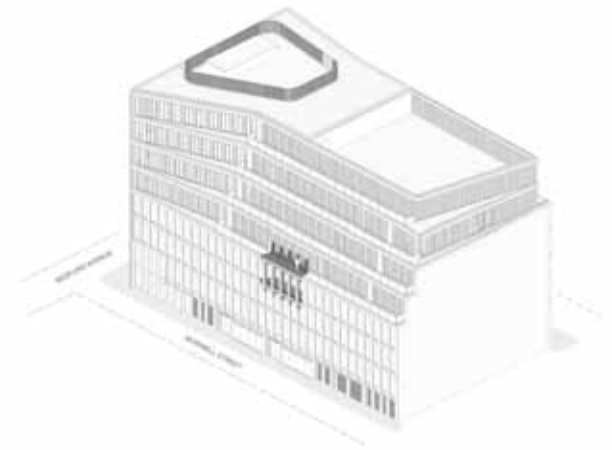
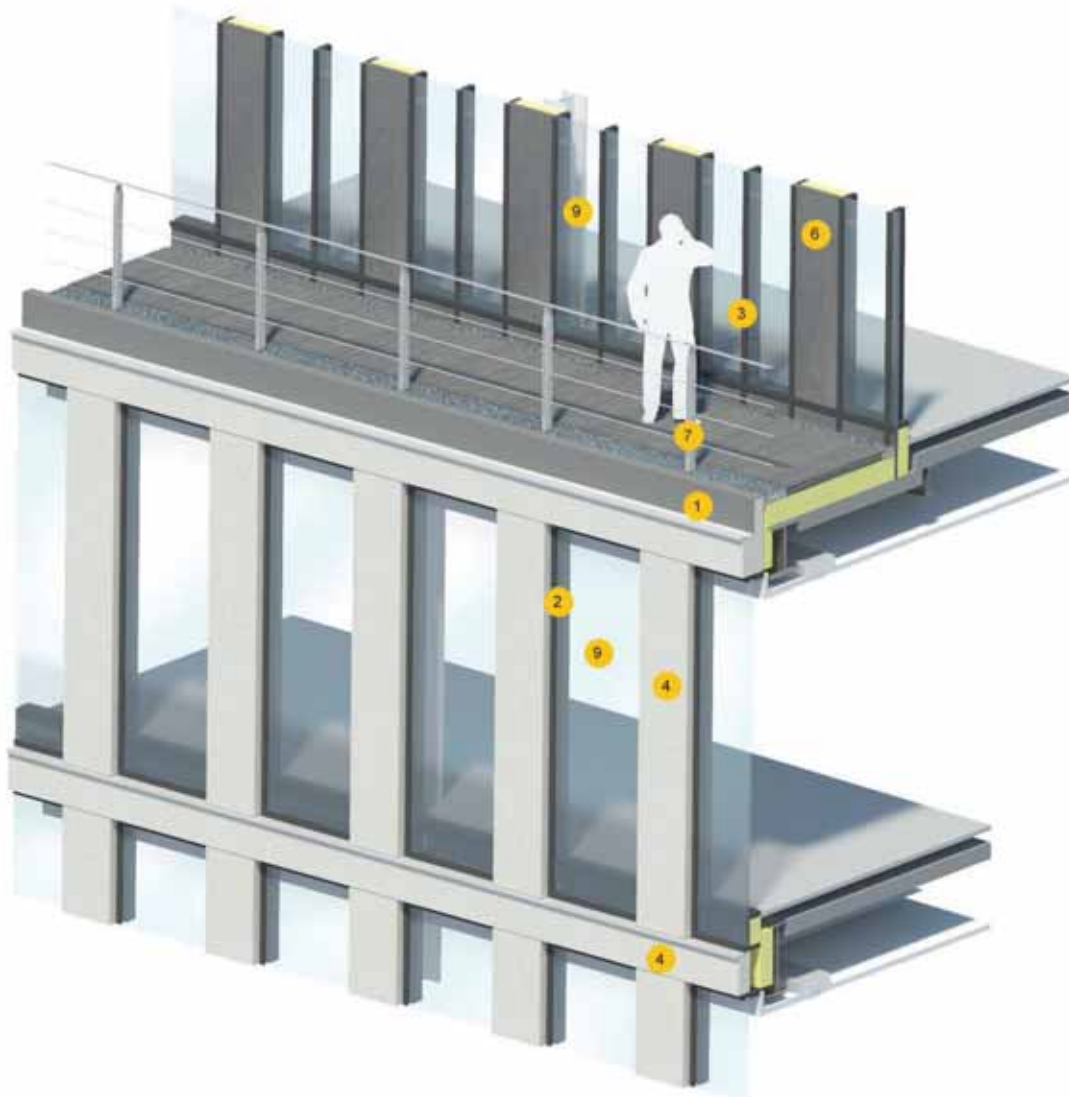
Party wall



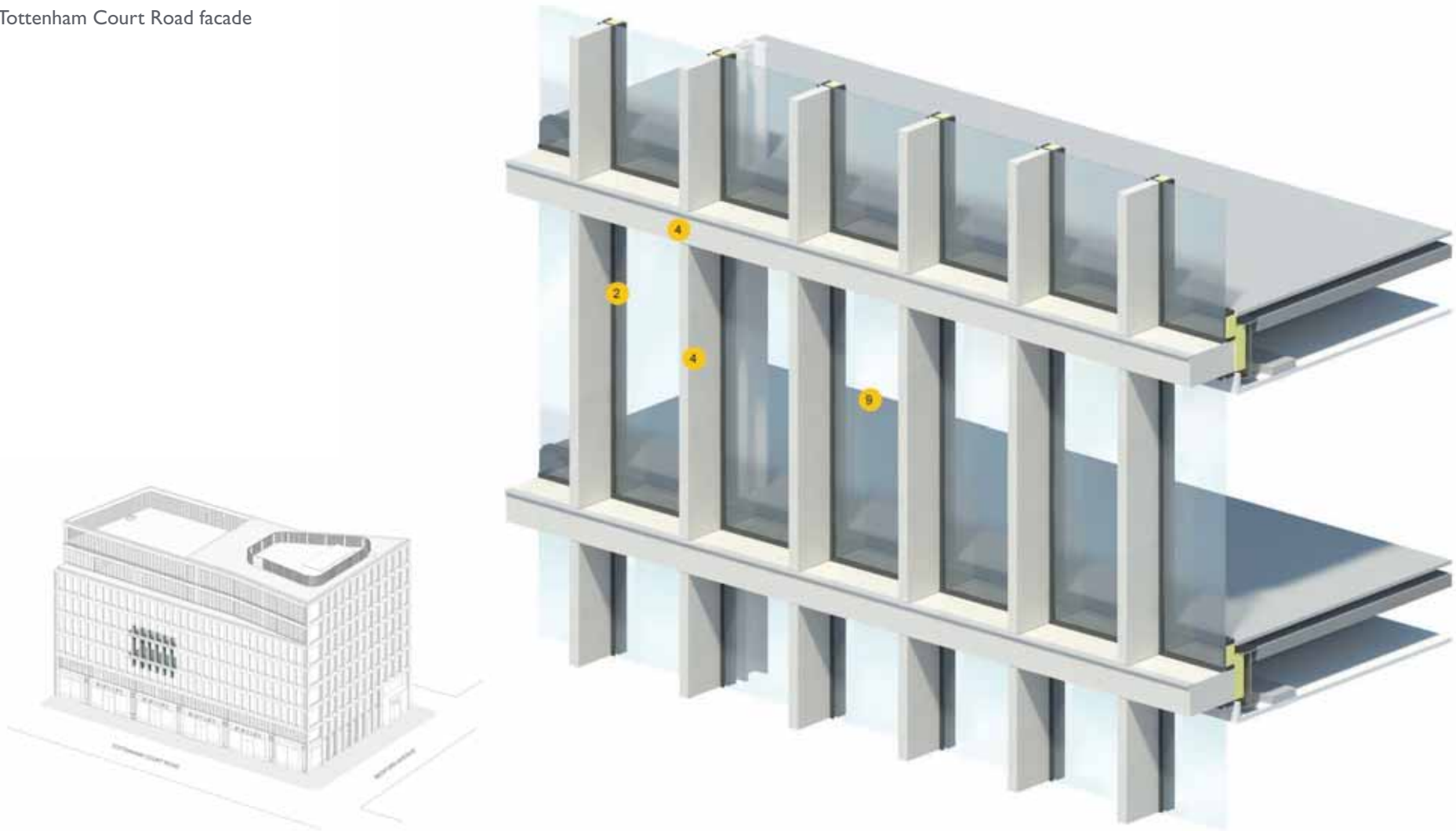
Plant room



Morwell Street terrace



Tottenham Court Road facade



Bedford Avenue facade



Shop front portal





Corners of south facade





## PHOTOGRAPHS OF MATERIAL SAMPLES

- |    |           |   |
|----|-----------|---|
| 1  | Sample 1  | PPC coping / flashing                         |
| 2  | Sample 2  | PPC double glazed unit                        |
| 3  | Sample 3  | PPC capping                                   |
| 4  | Sample 4  | Reconstituted precast stone                   |
| 5  | Sample 5  | Bronze anodised aluminium                     |
| 6  | Sample 6  | Patinated zinc panel                          |
| 7  | Sample 7  | Stainless steel balustrade                    |
| 8  | Sample 8  | PPC aluminium grillage                        |
| 9  | Sample 9  | Double glazed window                          |
| 10 | Sample 10 | PPC aluminium flat plate architectural louvre |

1 Sample 1  
Coping/Flashing

Finish: Polyester powder coated flashing  
RAL Colour 7043  
Matt finish



2 Sample 2  
PPC double glazed window units

Finish: Polyester powder coated aluminium  
RAL Colour 7043  
Matt finish



3 Sample 3  
PPC Capping

Finish: Polyester powder coated  
RAL Colour 7043  
Matt finish



4 Sample 4  
Reconstituted precast stone

Finish: Reconstituted precast stone  
C190 Aggregate Mix  
Acid etched



5 Sample 5  
Bronze anodised aluminium

Finish: Bronze anodised aluminium  
United anodised ltd.  
Anodised Anolok 545



6 Sample 6  
Patinated zinc panel

Finish: Patinated zinc  
RHINEZINC prePATINA  
Graphite grey



7 Sample 7  
Stainless steel balustrade

Finish: Stainless steel balustrade  
Brushed/satin finish





8 Sample 8  
PPC louvre

Finish: Polyester powder coated  
RAL Colour 7043  
Matt finish



9 Sample 9  
Double glazed window

Finish: Double glazed insulated glass unit  
Solar control coating cool-lite  
Xtreme 60/28



10 Sample 10  
PPC aluminium architectural louvre.

Finish: Polyester powder coated  
RAL 7043  
Matt finish



# Bennetts Associates Architects

Bennetts Associates Limited Registered in England and Wales No. 2710265

1 Rawstorne Place London EC1V 7NL • T +44 (0)20 7520 3300 • F +44 (0)20 7520 3333

• E [mail@bennettsassociates.com](mailto:mail@bennettsassociates.com) • W [www.bennettsassociates.com](http://www.bennettsassociates.com)