

One Bedford Avenue

With reference to Application 2014/6843/P

Discharge of Planning Condition 10

May 2016



Bennetts Associates
Architects

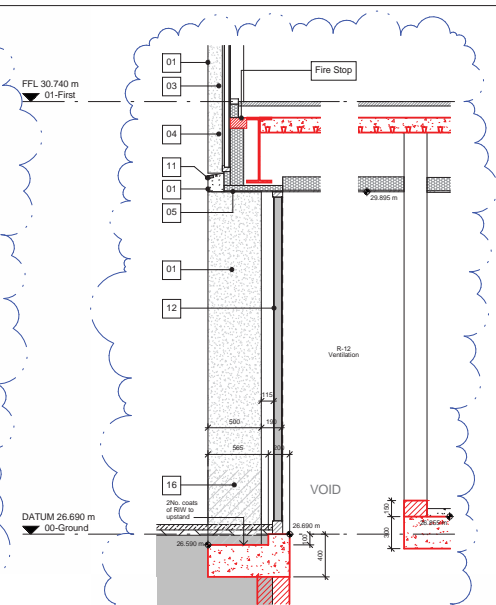
4.0

DETAILED CLADDING DRAWINGS

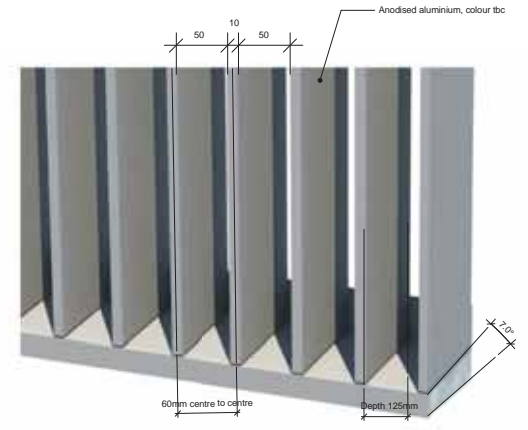
Drawing No.	Rev	Drawing Title
1217_21_410	B	Facade Bay Study, Party Wall Elevation, Party Wall
1217_21_420	A	Facade Bay Study, Morwell St. Elevation, Service Bay
1217_21_421	A	Facade Bay Study, Morwell St. Elevation, Retail Frontage
1217_21_422	A	Facade Bay Study, Morwell St. Elevation, Reception
1217_21_423	A	Facade Bay Study, Morwell St. Elevation, First/Third Floor Office
1217_21_424	A	Facade Bay Study, Morwell St. Elevation, Fourth/Seventh Floor Office
1217_21_430	B	Facade Bay Study, Bedford Ave. Elevation, Reception
1217_21_431	B	Bedford Avenue Elevation, Retail Corner
1217_21_432	A	Bedford Avenue Elevation, Office Corner
1217_21_433	B	Bedford Avenue Elevation, Typical Office Floor
1217_21_440	A	Tottenham Court Road Elevation, Retail Frontage
1217_21_441	A	Tottenham Court Road Elevation, Second/Fifth Office Floor
1217_21_442	B	Tottenham Court Road Elevation, Sixth/Seventh Office/Plantroom Floor
1217_21_443	B	Tottenham Court Road Elevation, Party Wall
1217_21_444	A	Tottenham Court Road Elevation, Plant Screen
1217_21_500	/	Façade Bay Study, Bedfors Estates Coronet detail



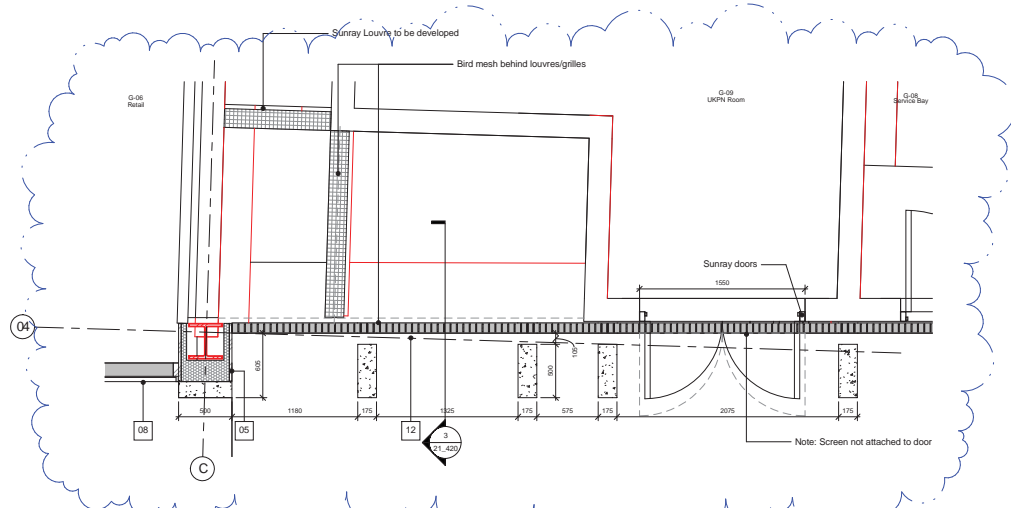
1 Elevation View



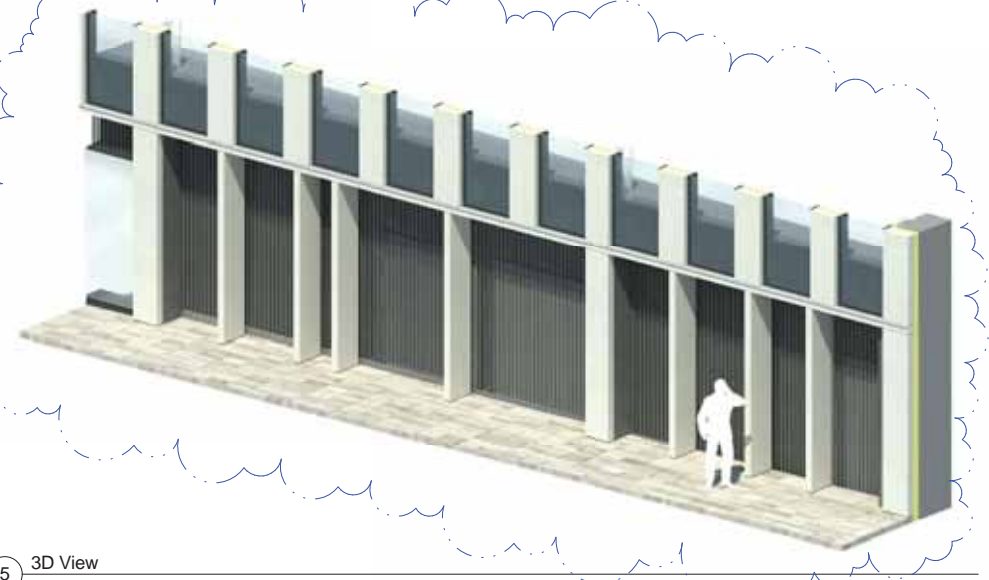
3 Section View



4 3D View of louvre cill detail
Scale N.T.S.



2 Plan View



5 3D View
Scale N.T.S.

Revisions	By	Chk	Revisions	By	Chk
/ 141103 Issued for Envelope Tender	PB	DW			
A 150519 Issued for Stage 4	PB	DW			

By	Chk	Revisions

- Notes:**
- 1 - All structural steel shown in red for clarity, the structure indicated on this drawing has been drawn by WSL.
 - 01 - Precast concrete cladding
 - 02 - Bronze anodised aluminium
 - 03 - Slatbed double glazed unit, ceramic frit from FFL to 750mm
 - 04 - Glass board insulated panel, with full ceramic frit
 - 05 - Fabricated zinc faced insulated panel
 - 06 - Fabricated double glazed unit, with glass to glass horizontal joint
 - 07 - Glazed RGV window
 - 08 - Glazed drop front
 - 09 - Glazed door opening
 - 10 - Steel cable balustrade
 - 11 - PPC Flashing
 - 12 - Anodised aluminium architectural louvres with bird mesh to rear face
 - 13 - Anodised aluminium architectural louvres with bird mesh to rear face
 - 14 - Galvan roof
 - 15 - Structural steel mass steel structural
 - 16 - Datum band anti-graffiti treatment
 - 17 - White public ballast
 - 18 - European granite pavers
 - 19 - Glass board structure base
 - 20 - Concrete paver

Bennetts Associates Architects
 1 Rawlstone Place London EC1V 7NL
 T +44 (0) 20 7520 3300 F +44 (0) 20 7520 3333
 E mail@bennettsassociates.com
 For Bennetts Associates' electronic information issue disclaimer ->
www.bennettsassociates.com/rawlstoneplace/

Project
 One Bedford Avenue
 Exemplar Properties (Bedford) Ltd.

Drawing Title
 Facade Bay Study
 Morwell St. Elevation
 Service Bay

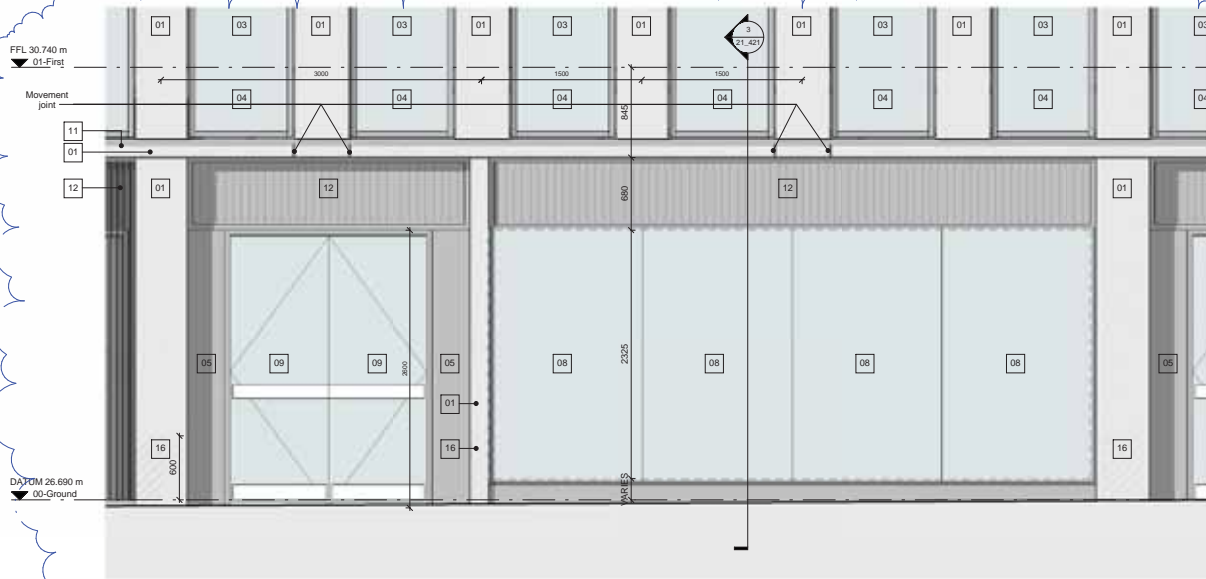
Drawing Number
 1217_21_420

Scale @ A3 1:50
Scale @ A1 1:25

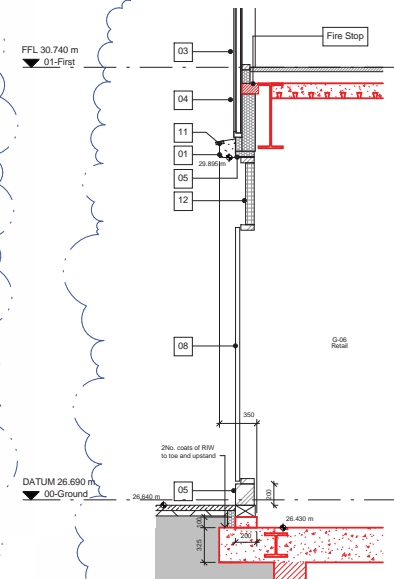
Revision
 A

Revision Date
 150519

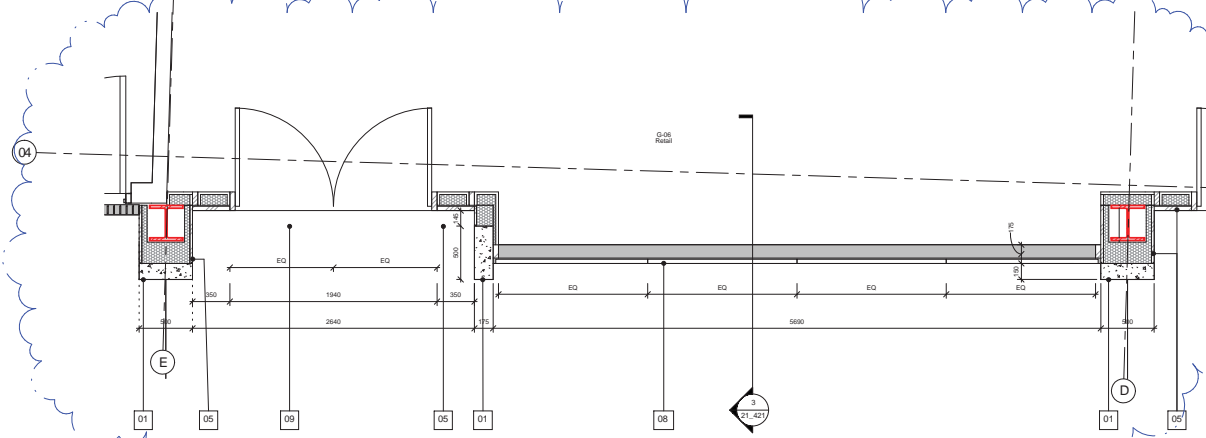
Project No. 1217
Revision No. A
 YYMMDD



1 Elevation View



3 Section View



2 Plan View



4 3D View

Revisions	By	Chk	Revisions	By	Chk
/ 141193 Issued for Envelope Tender	PB	DW			
A 150519 Issued for Stage-4	PB	DW			

By	Chk	Revisions	By	Chk

- Notes**
- 1 - Precast concrete cladding
 - 2 - Bronze anodised aluminium
 - 3 - Scaled double glazed unit, ceramic frit from FFL to 750mm
 - 4 - Glass bonded insulated panel, with full ceramic frit
 - 5 - Painted zinc faceted insulated panel
 - 6 - Scaled double glazed unit, with glass to glass horizontal joint
 - 7 - Glazed door window
 - 8 - Glazed door frame
 - 9 - Glazed door opening
 - 10 - Steel cable Balustrade
 - 11 - PPC Flashing
 - 12 - Architectural plant screen grillage & gate
 - 13 - Architectural aluminium architectural louvres with bird mesh to rear face
 - 14 - Green roof
 - 15 - Structural stainless steel handrail
 - 16 - Datum band anti-graffiti treatment
 - 17 - White granite balustr
 - 18 - European granite pavers
 - 19 - Glass hand structure base
 - 20 - Concrete paver
- All structural steel shown in red for clarity, the structure indicated on this drawing has been drawn by WSL.

Bennetts Associates Architects
 1 Rawlstone Place London EC1V 7NL
 T +44 (0) 20 7520 3300 F +44 (0) 20 7520 3333
 E mail@bennettsassociates.com
 www.bennettsassociates.com/transport/bedford

Project
One Bedford Avenue
 Exemplar Properties (Bedford) Ltd.

Drawing Title
Facade Bay Study
 Morwell St. Elevation
 Retail Frontage

Drawing Number
1217_21_421

Scale @ A3
 1 : 50

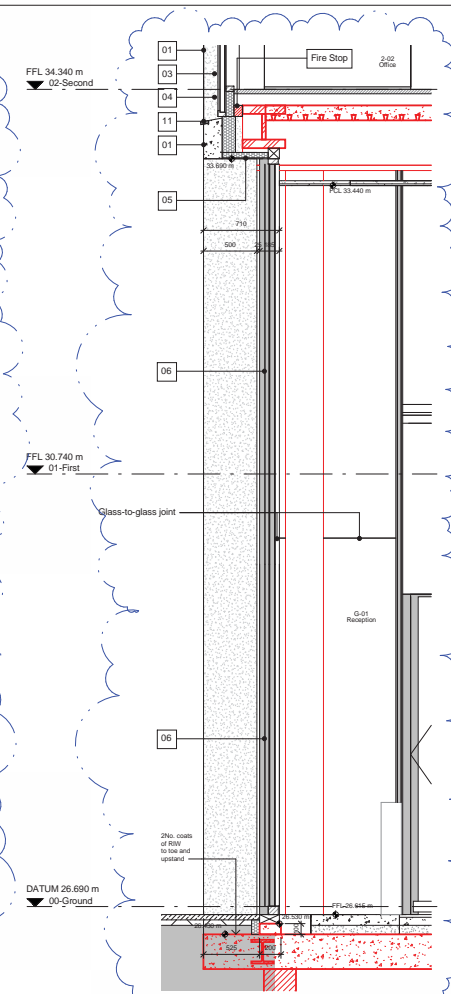
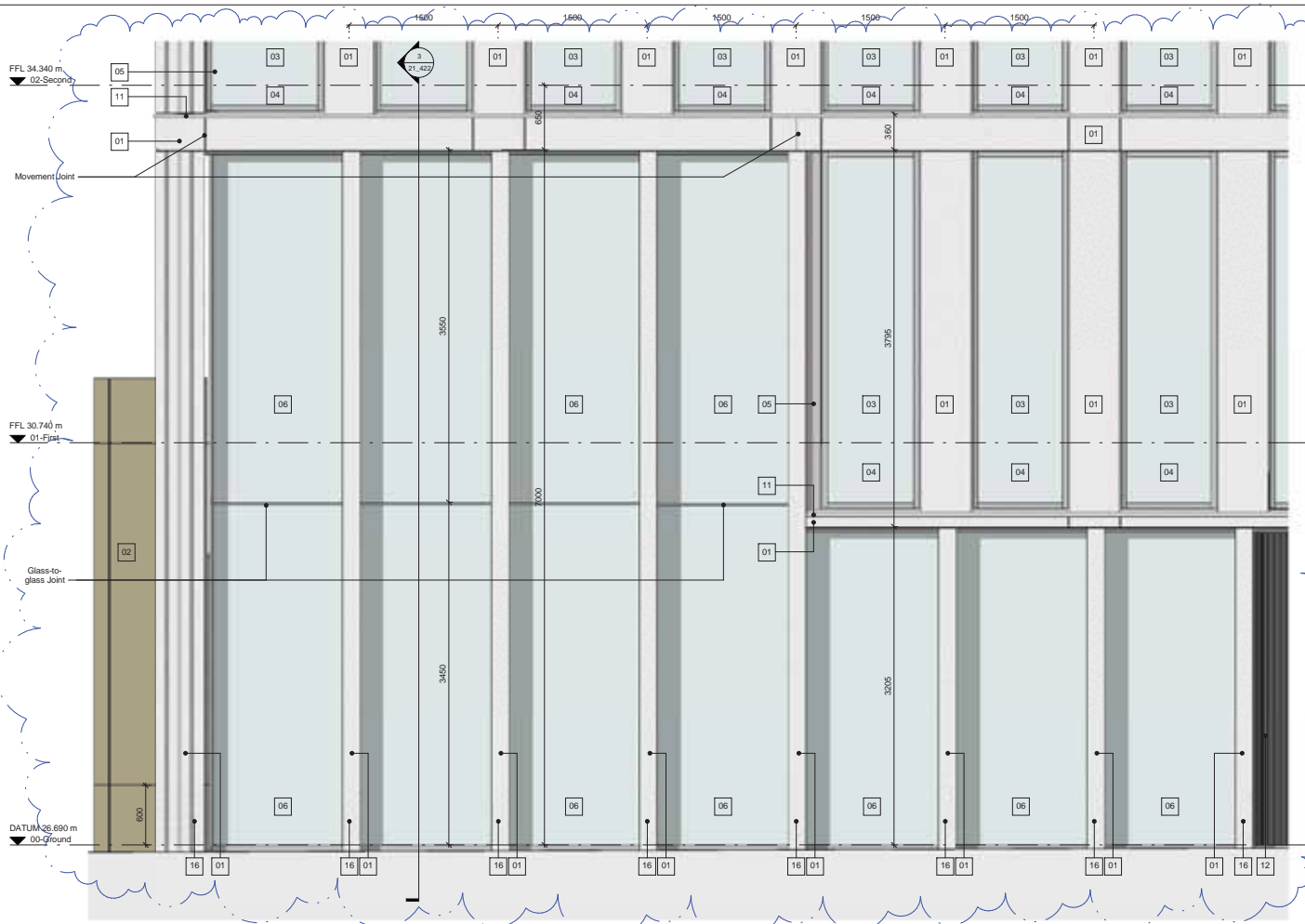
Scale @ A1
 1 : 25

Project No. 1217

Revision
 A

Revision Date
 150519

YY MM DD

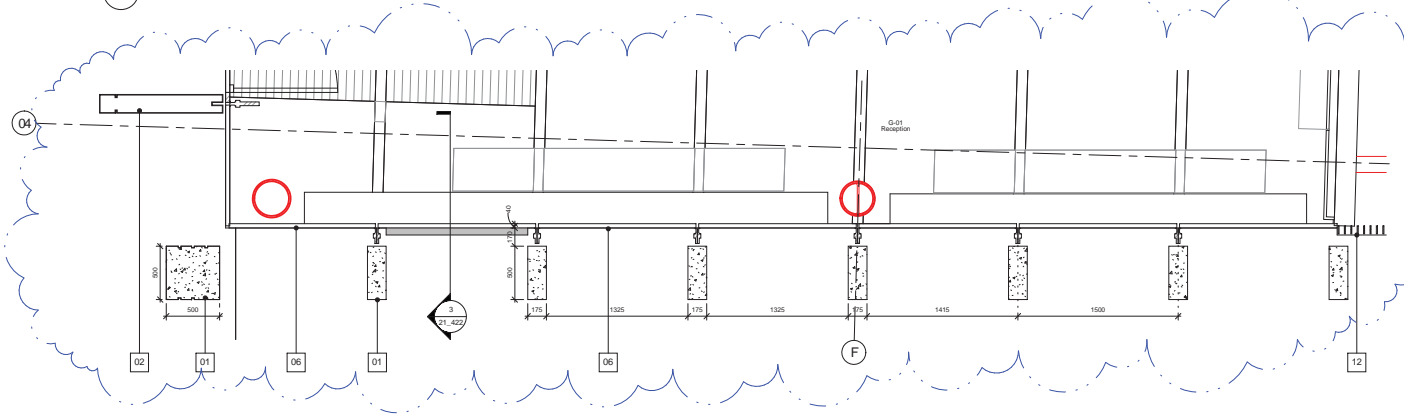


Revisions	By	Chk
/ 141103	Issued for Envelope Tender	PE
A 150519	Issued for Stage 4	DW

- Notes
- All structural steel shown in red for clarity, the structure indicated on this drawing has been drawn by WSL.
- 01 - Precast concrete cladding
 - 02 - Bronze anodized aluminium
 - 03 - Sealed double glazed unit, ceramic frit from FFL to 750mm
 - 04 - Glass faced insulated panel, with full ceramic frit
 - 05 - Polished zinc faced insulated panel
 - 06 - Sealed double glazed unit, with glass to glass horizontal joint
 - 07 - Glazed door window
 - 08 - Glazed door window
 - 09 - Steel cable aluminium
 - 10 - PPC Flashing
 - 11 - Vertical aluminium architectural louvre with bird mesh to rear face
 - 12 - Architectural plant screen grille & gate
 - 13 - Green roof
 - 14 - Brushed stainless steel handrail
 - 15 - Clear hand and grip treatment
 - 16 - White polycarbonate ballast
 - 17 - European granite pavers
 - 18 - Glass faced shadow box
 - 19 - Concrete panel

1 Elevation View

3 Section View



2 Plan View



4 3D View

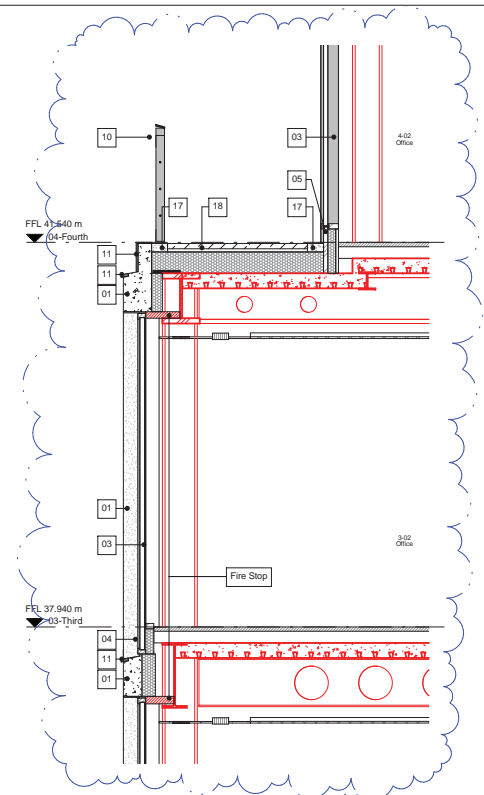
Bennetts Associates Architects
 1 Raveston Place London EC1V 7NL
 T +44 (0) 20 7520 3300 F +44 (0) 20 7520 3333
 E mail@bennettsassociates.com
 For Bennetts Associates' electronic information local disclaimer -
www.bennettsassociates.com/electronic-information-disclaimer

Project 1217
One Bedford Avenue
 Exemplar Properties (Bedford) Ltd.

Drawing Title
Facade Bay Study
 Morwell St. Elevation
 Reception

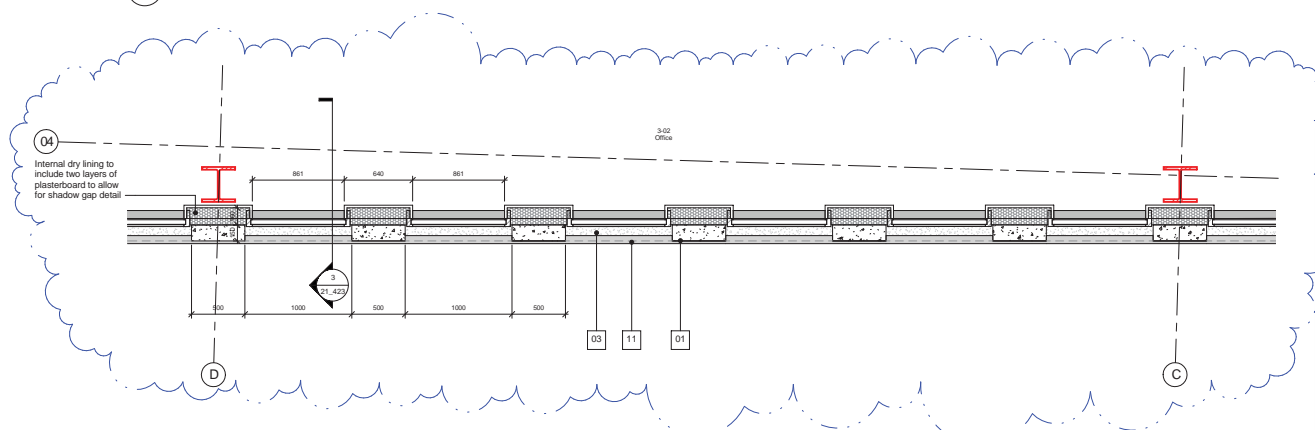
Drawing Number
 1217_21_422
 Revision
 A

Scale @ A3 1:50
 Scale @ A1 1:25
 Revision Date
 150519
 VV MM DD

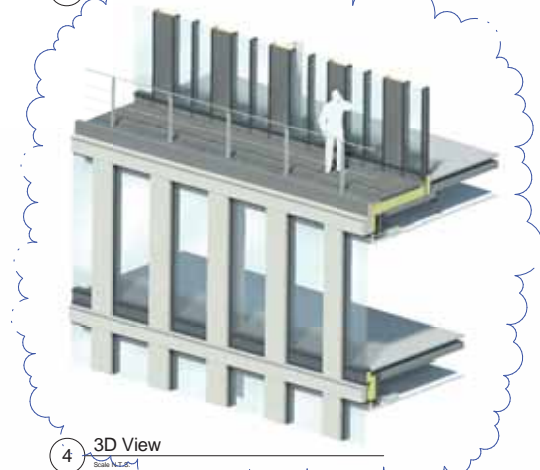


1 Elevation View

3 Section View



2 Plan View



Revisions	By	Chk	Revisions	By	Chk
141193 Issued for Envelope Tender	PB	DW			
A 150519 Issued for Stage 4	PB	DW			

Notes
All structural steel shown in red for clarity, the structure indicated on this drawing has been drawn by WSL.

- 01 - Precast concrete cladding
- 02 - Bronze anodised aluminium
- 03 - Scaled double glazed unit, ceramic frit from FFL to 750mm
- 04 - Glass board insulated panel, with foil ceramic frit
- 05 - Painted zinc faceted insulated panel
- 06 - Scaled double glazed unit, with glass to glass horizontal joint
- 07 - Glazed AOV window
- 08 - Glazed door frame
- 09 - Glazed door opening
- 10 - Steel cable balustrade
- 11 - PPC Flashing
- 12 - Vertical aluminium architectural louvres with bird mesh to rear face
- 13 - Structural plant screen grillage & gate
- 14 - Green roof
- 15 - Blended stainless steel hardware
- 16 - Datum band anti-graffiti treatment
- 17 - White polished balustr
- 18 - European granite pavers
- 19 - Cast lead drainage box
- 20 - Concrete paver

Bennetts Associates Architects
 1 Rawlstone Place London EC1V 3NL
 T +44 (0) 20 7520 3300 F +44 (0) 20 7520 3333
 E mail@bennettsassociates.com
 For Bennetts Associates' electronic information issue disclaimer -
www.bennettsassociates.com/information/infocentre/

Project
 One Bedford Avenue
 Exemplar Properties (Bedford) Ltd.

Drawing Title
 Facade Bay Study
 Morwell St. Elevation
 First/Third Office Floor

Drawing Number
 1217_21_423

Scale @ A3 1:50
Scale @ A1 1:25

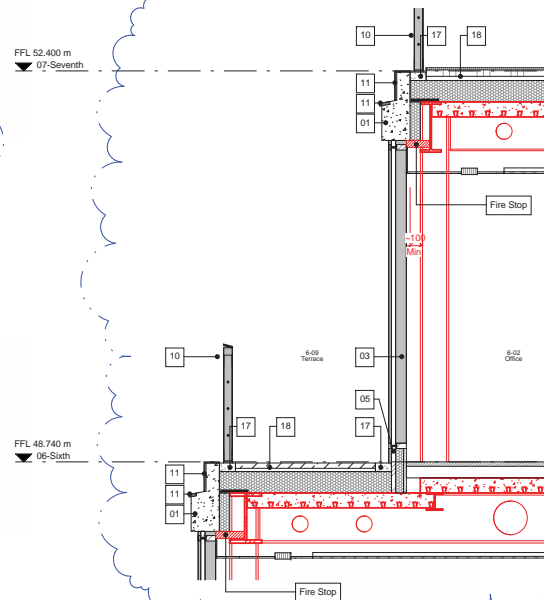
Revision
 A

Revision Date
 150519

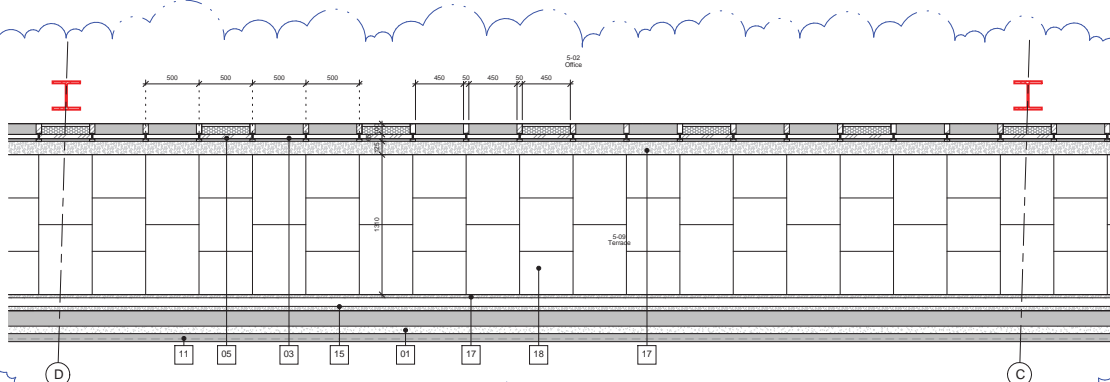
Project No. 1217
Revision No. A
 YY MM DD



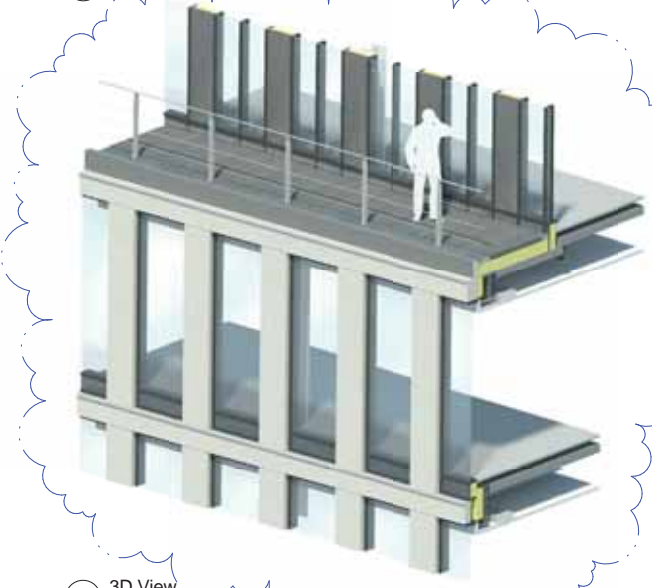
1 Elevation View



3 Section View



2 Plan View



4 3D View

Revisions	By	Chk	Revisions
141103 Issued for Envelope Tender	PB	DW	
A 150519 Issued for Stage 4	PB	DW	

By	Chk	Revisions

Notes
 All structural steel shown in red for clarity, the structure indicated on this drawing has been drawn by WSL.

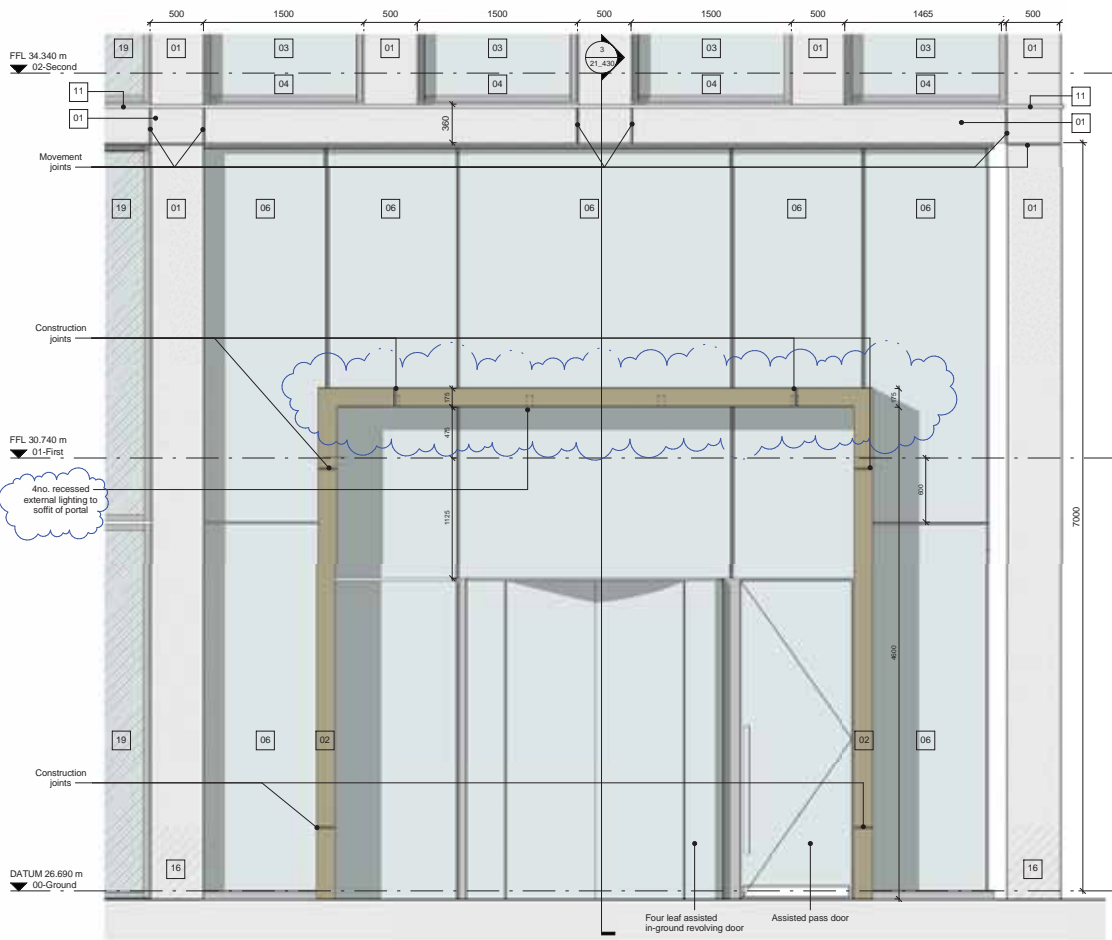
- 01 - Precast concrete cladding
- 02 - Bronze anodized aluminium
- 03 - Saturated double glazed unit, ceramic frit from FFL to 750mm
- 04 - Glass fixed insulated panel, with frit ceramic frit
- 05 - Polished zinc faceted insulated panel
- 06 - Saturated double glazed unit, with glass to glass horizontal joint
- 07 - Glazed A/D/V window
- 08 - Glazed drop front
- 09 - Glazed door opening
- 10 - Steel cable balustrade
- 11 - PPC Flashing
- 12 - Vertical aluminium architectural louvers with bird mesh to rear face
- 13 - Architectural plant screen grille & gate
- 14 - Glass roof
- 15 - Blomberg glass door steel handrail
- 16 - Datum band anti-graffiti treatment
- 17 - White public ballast
- 18 - European granite pavers
- 19 - Glass fixed shadow box
- 20 - Concrete paving

Bennetts Associates Architects
 1 Rawlstone Place London EC1V 7NL
 T +44 (0) 20 7520 3300 F +44 (0) 20 7520 3333
 E mail@bennettsassociates.com
 For Bennetts Associates' electronic information issue disclaimer -
www.bennettsassociates.com/information/infocentre/

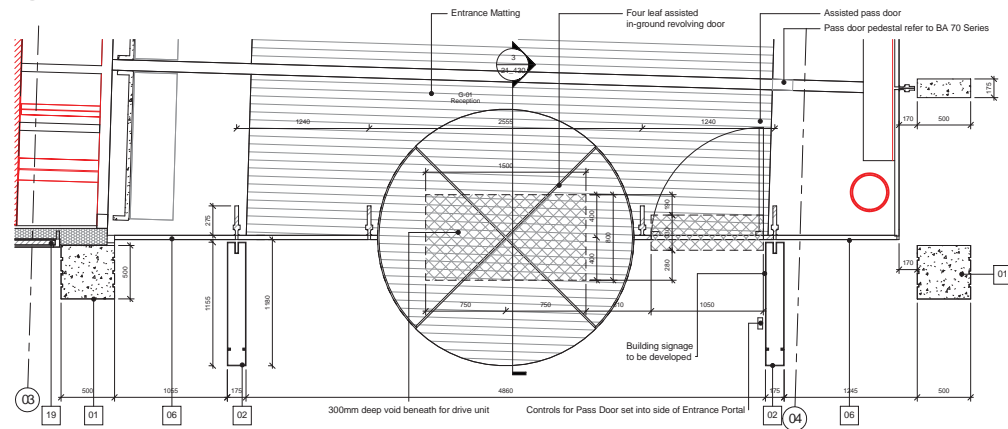
Project
One Bedford Avenue
 Exemplar Properties (Bedford) Ltd.
 Drawing Title
Facade Bay Study
 Morwell St. Elevation
 Fourth/Seventh Office Floor

Drawing Number
1217_21_424
 Scale @ A3
 1 : 50
 Scale @ A1
 1 : 25

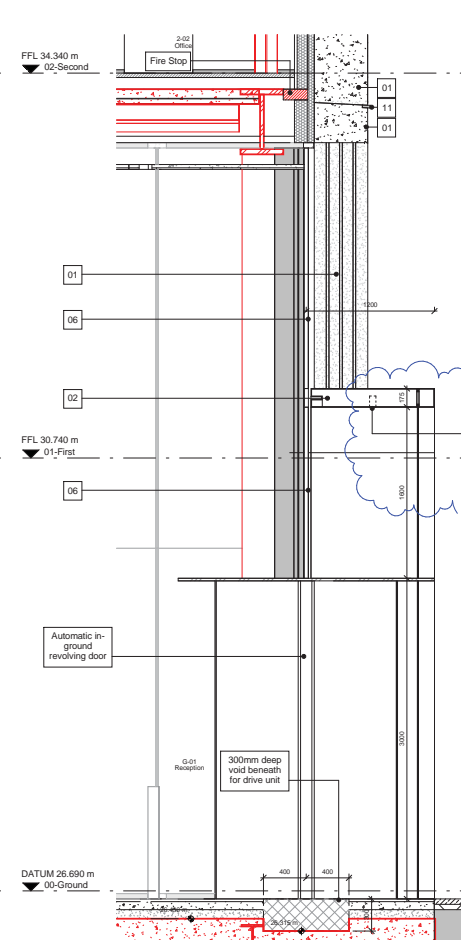
Project No. 1217
 Revision
 A
 Revision Date
 150519
 VV MM DD



1 Elevation View



2 Level 00 Plan View



3 Section View



4 3D View
Scale N.T.S.

Revisions	By	Chk
/ 141103 Issued for Envelope Tender	PB	DW
A 150519 Issued for Stage 4	PB	DW
B 150701 Amended for inclusion of CCF	KC	DW

Notes

All structural steel shown in red for clarity, the structure indicated on this drawing has been drawn by WSL.

- 01 - Precast concrete cladding
- 02 - Bronze anodised aluminium
- 03 - Sealed double glazed unit, ceramic fill from FFL to 750mm
- 04 - Glass faced insulated panel, with full ceramic frit
- 05 - Fritted zinc faced insulated panel
- 06 - Sealed double glazed unit, with glass to glass horizontal joint
- 07 - Glazed door opening
- 08 - Glazed door frame
- 09 - Glazed door opening
- 10 - Steel cable fastener
- 11 - PPC Flashing
- 12 - Vertical aluminium architectural binnacle with bird mesh to rear face
- 13 - Architectural plant screen grille & gale
- 14 - Crown roof
- 15 - Brushed stainless steel handrail
- 16 - Clean hand anti-graffiti treatment
- 17 - White polka ballast
- 18 - European granite pavers
- 19 - Glass faced shadow box
- 20 - Concrete paver

Drawing updates to this revision for CCF:
1 - CCF 020: Inclusion of 4no. flush external lights into the soffit of the reception portal.

Bennetts Associates Architects

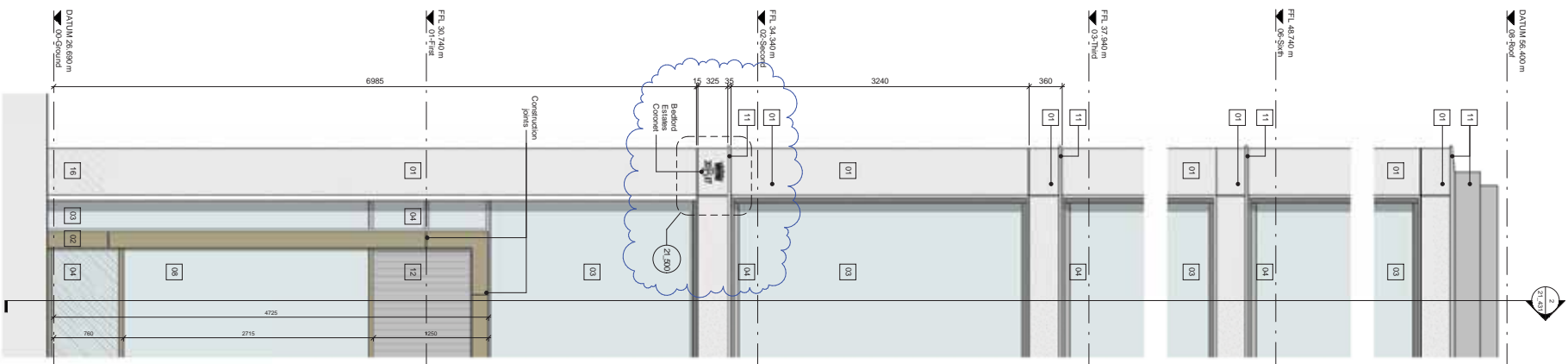
1 Rawstone Place London EC1V 7NL
T +44 (0) 20 7520 3300 F +44 (0) 20 7520 3333
E mail@bennettsassociates.com
For Bennett's Associates' electronic information look disclaimer - www.bennettsassociates.com/information/look-disclaimer

Project 1217 Project No. 1217
One Bedford Avenue
Exemplar Properties (Bedford) Ltd.

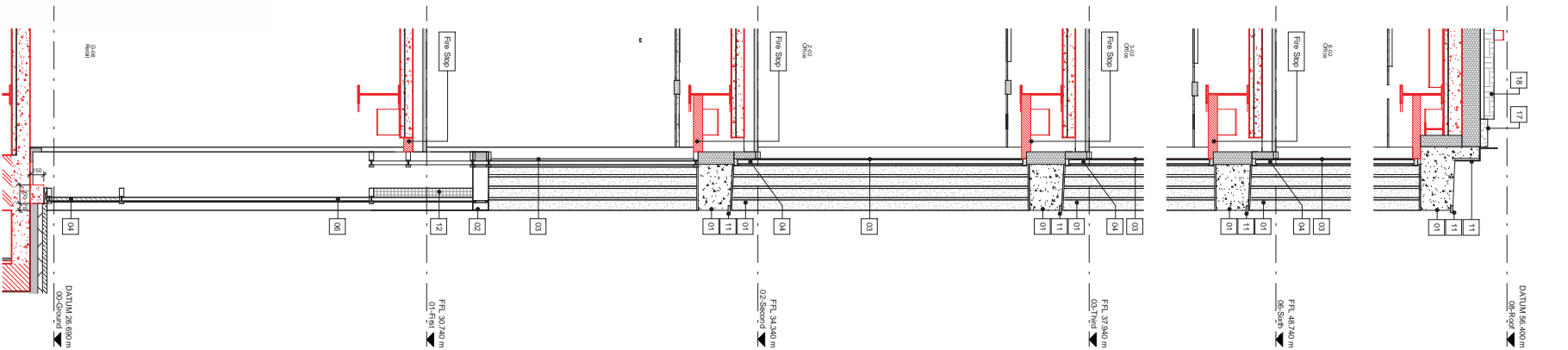
Drawing Title
Facade Bay Study
Bedford Avenue Elevation
Reception

Drawing Number 1217_21_430 Revision B

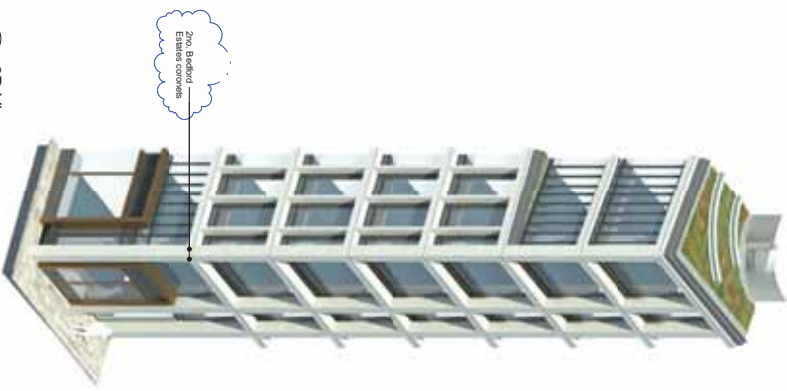
Scale @ A3 1 : 50 Scale @ A1 1 : 25 Revision Date 15/07/01
YY MM DD



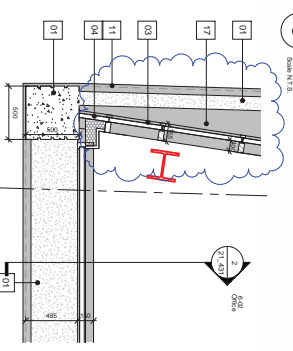
1 Elevation View



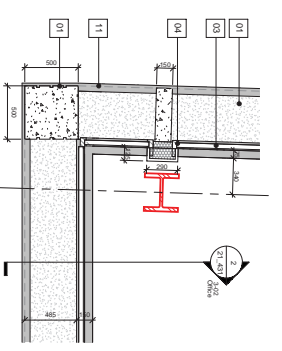
2 Section View



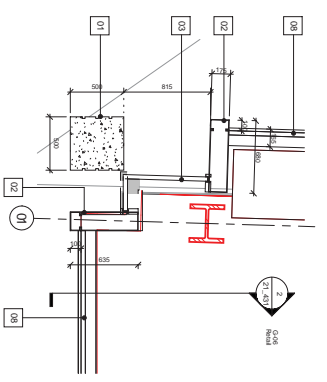
6 3D View



3 Level 03 Plan View



4 Level 06 Plan View



5 Level 00 Plan View

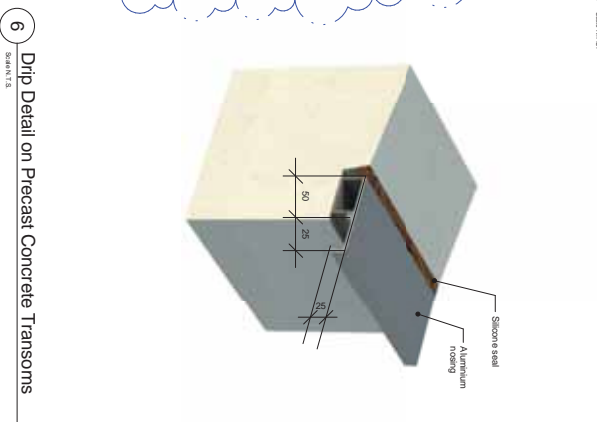
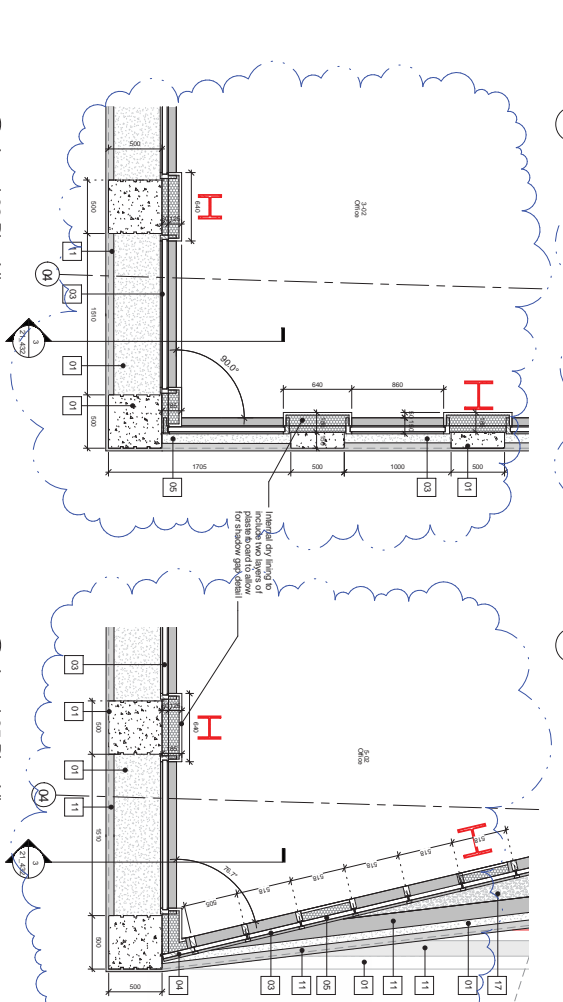
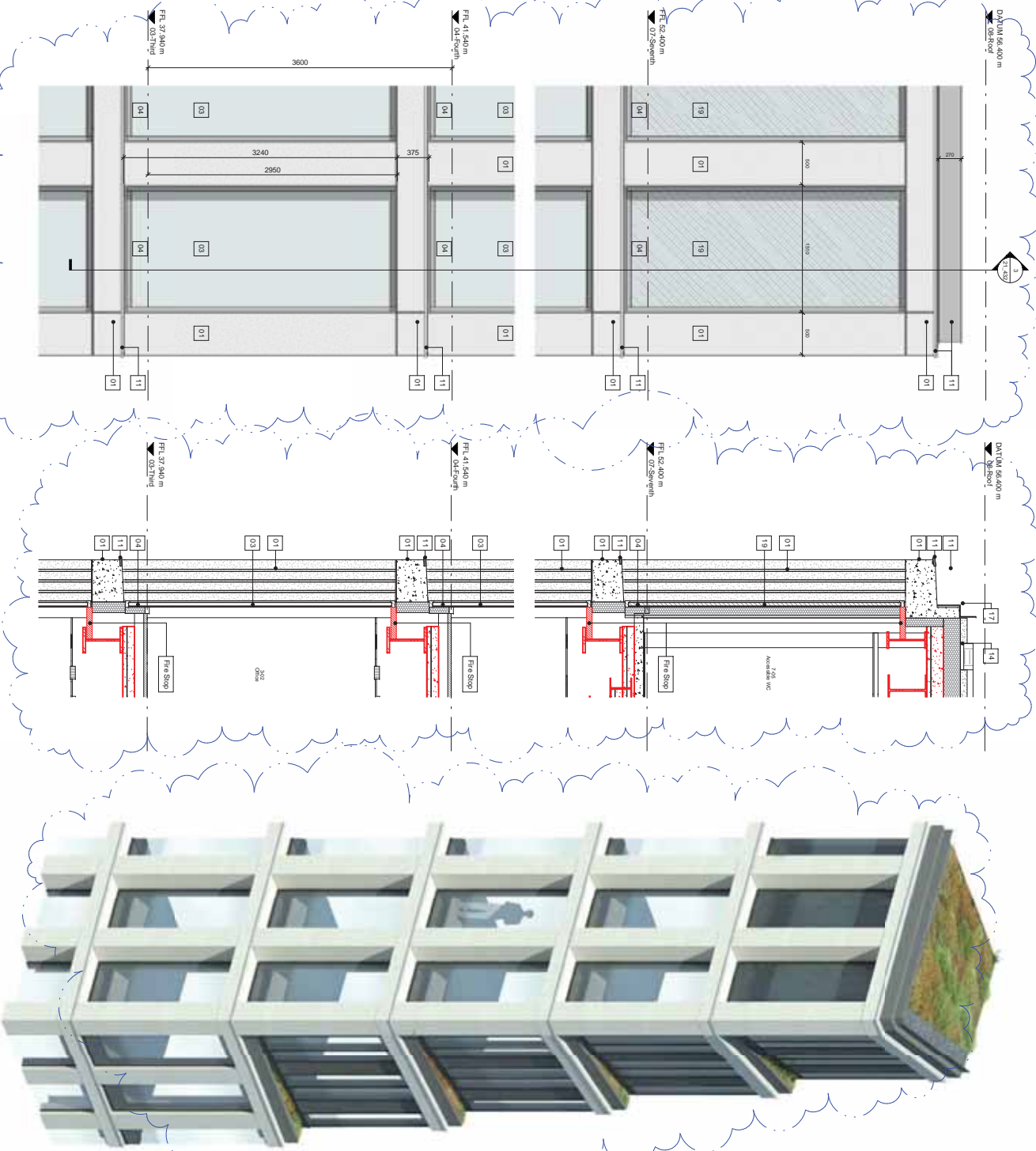
Revisions	By / Ck	Notes
7 / 141103	RB / BW	As structural steel shown in red for clarity, the structure
6 / 150719	KC / BW	is to be constructed using precast concrete. This structure is
9 / 150719	KC / BW	approved for inclusion of CCF

Drawing updated for inclusion of CCF:
 1- CCF 02: Addition of Bedford Estates corner to intermediate floor level and Level 06. 750mm radius spacing to Level 06 and 7-torisection down load

Bennett Associates Architects
 1 Renaissance Place London EC1V 7NL
 T +44 (0) 20 7520 5300 F +44 (0) 20 7520 5333
 E info@bennettassociates.com
 www.bennettassociates.com

Project
One Bedford Avenue
 Exemplar Properties (Bedford) Ltd.
 Drawing Title
 Facade Bay Study
 Bedford Avenue Elevation
 Retail Corner

Project No. 1217
 Drawing Number
 1217_21_431
 Scale @ A3
 1:50
 Scale @ A1
 1:25
 Revision
 B
 15/07/19
 Revision Date
 15/07/19
 VY/MA/DO



Revisions
 / 141103 Issued for Envelope Tender
 A 150819 Issued for Stage 4

By: CH
 RB DW
 RB DW

Checked: NAK
 Architectural detail shown in red for clarity, the structure has been shown by NAK.

01: Window frame assembly
 02: Window frame assembly
 03: Window frame assembly
 04: Window frame assembly
 05: Window frame assembly
 06: Window frame assembly
 07: Window frame assembly
 08: Window frame assembly
 09: Window frame assembly
 10: Window frame assembly
 11: Window frame assembly
 12: Window frame assembly
 13: Window frame assembly
 14: Window frame assembly
 15: Window frame assembly
 16: Window frame assembly
 17: Window frame assembly
 18: Window frame assembly
 19: Window frame assembly
 20: Window frame assembly

Project
 Bennett Associates Architects
 One Bedford Avenue
 Exemplar Properties (Bedford) Ltd.
 1 Rawlinson Place London EC1V 7NL
 T +44 (0) 20 7520 5300 F +44 (0) 20 7520 5333
 www.bennettassociates.com
 info@bennettassociates.com
 www.bennettassociates.com

Drawing Title
 Facade Bay Study
 Bedford Avenue Elevation
 Office Corner

Drawing Number
 1217_21_432

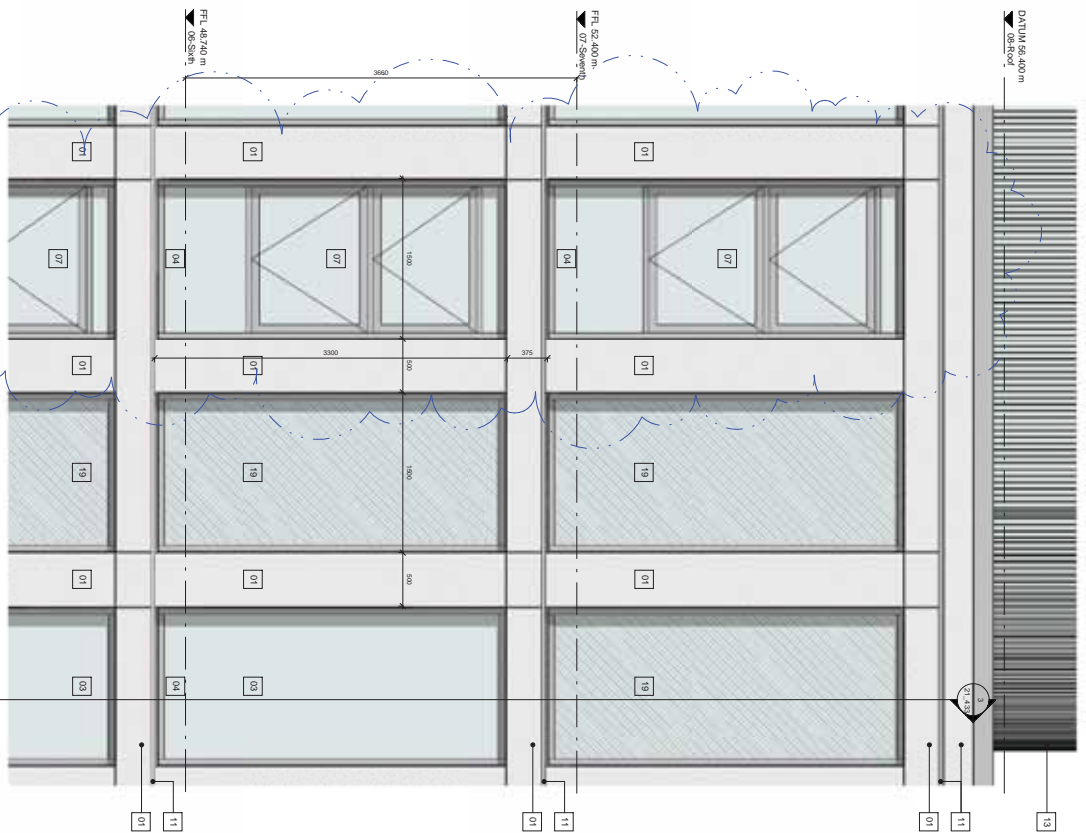
Scale @ A3
 1:50

Scale @ A1
 1:25

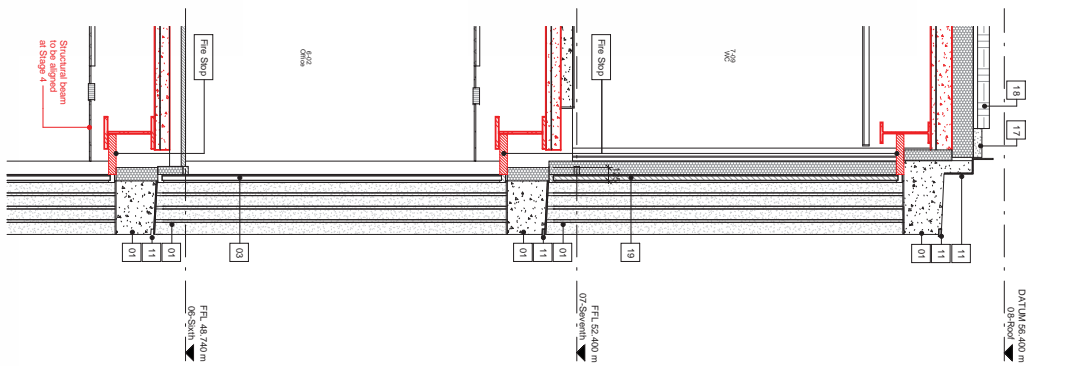
Revision
 A
 150819
 150819

Project No.
 1217

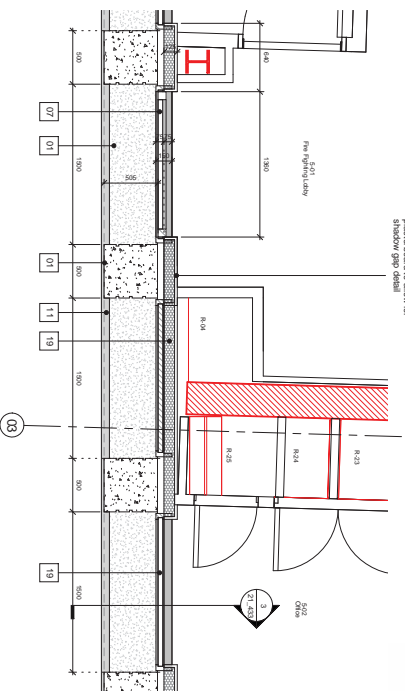
Revision Date
 150819



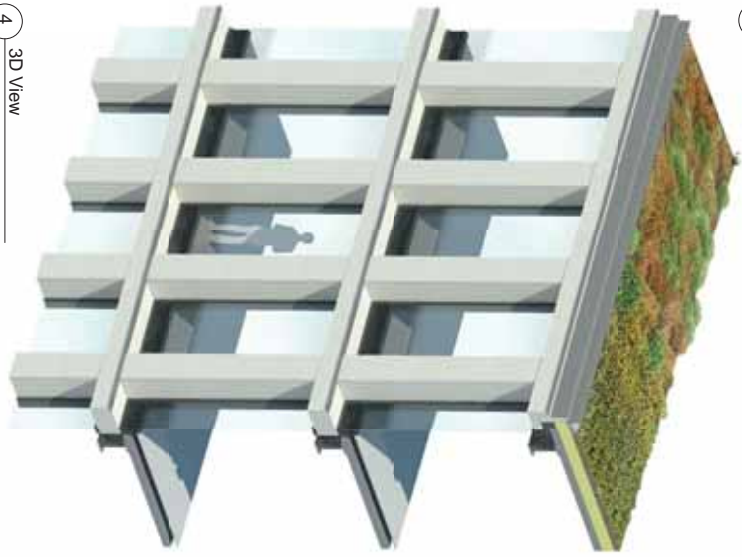
1 Elevation View



3 Section View



2 Level 05 Plan View



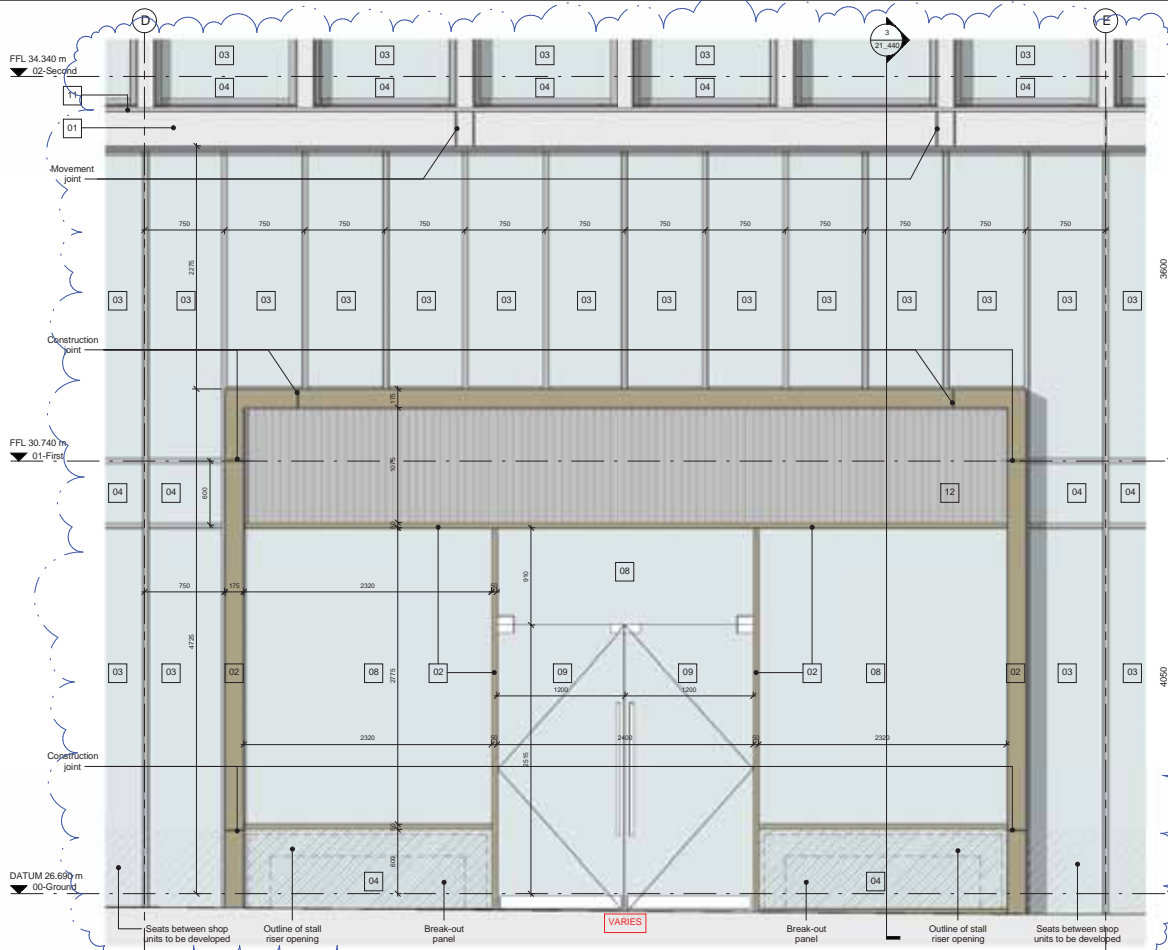
4 3D View

Revisions	By	CHK	Notes
7 / H4103	Issued for Envelope Tender	FB	As structural steel shown in red for clarity, the structure is to be steel.
6 / 160518	Revised for change of glazing condition 10	DW	As structural steel shown in red for clarity, the structure is to be steel.
5 / 160518	Revised for change of glazing condition 10	DW	As structural steel shown in red for clarity, the structure is to be steel.

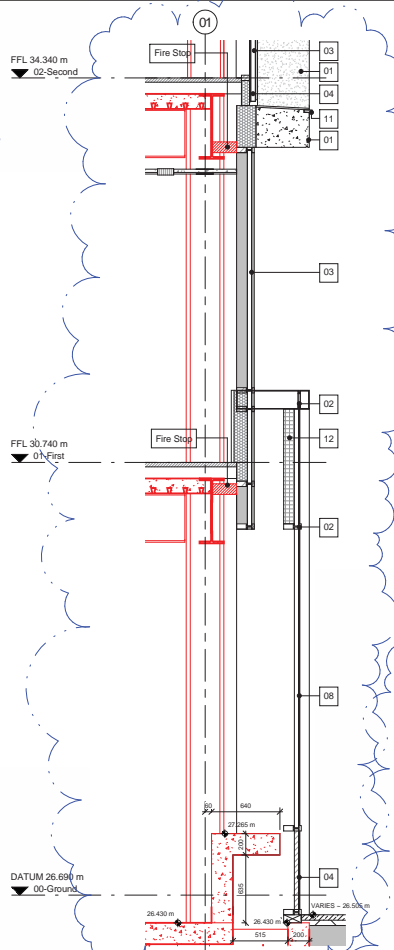
Bennett Associates Architects
 1 Renaissance Place London EC1V 7NL
 T +44 (0) 20 7520 3300 F +44 (0) 20 7520 3333
 E mail@bennettassociates.com
 www.bennettassociates.com

Project
One Bedford Avenue
 Exemplar Properties (Bedford) Ltd.
 Drawing Title
 Facade Bay Study
 Bedford Avenue Elevation
 Typical Office Floor

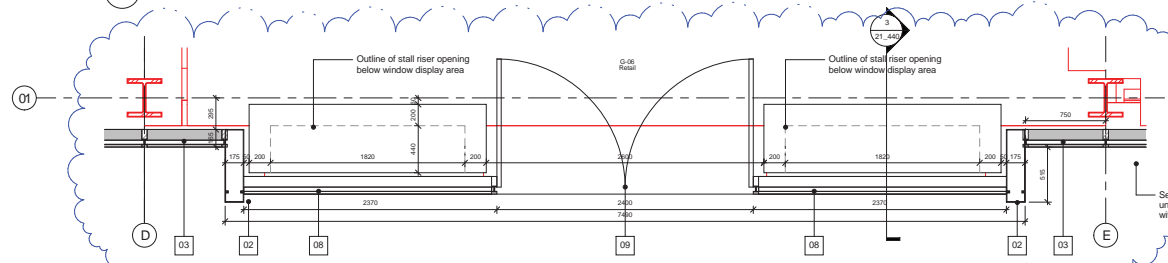
Project No.	Revision
1217	B
1217_21_433	16/05/18
Scale @ A3	Scale @ A1
1:150	1:75
Revision Date	17/04/20



1 Elevation View



3 Section View



2 Level 00 Plan View



4 3D View
Scale N.T.S.

Revisions	By	Chk	Revisions	By	Chk
141103 Issued for Envelope Tender	PB	DW			
A 150519 Issued for Stage 4	PB	DW			

Notes:
 All structural steel shown in red for clarity, the structure indicated on this drawing has been drawn by WSL.

- 01 - Precast concrete cladding
- 02 - Bronze anodised aluminium
- 03 - Sealed double glazed unit, ceramic frit from FFL to 750mm
- 04 - Glass bonded insulated panel, with full ceramic frit
- 05 - Polished zinc faced insulated panel
- 06 - Sealed double glazed unit, with glass to glass horizontal joint
- 07 - Glazed door opening
- 08 - Glazed shop front
- 09 - Glazed door opening
- 10 - Steel cable balustrade
- 11 - PPC Flashing
- 12 - Vertical aluminium structural louvers with bird mesh to rear face
- 13 - Architectural aluminium screen grilles & gate
- 14 - Green roof
- 15 - Bonded stainless steel handrail
- 16 - Datum band anti-graffiti treatment
- 17 - White public handrail
- 18 - European granite pavers
- 19 - Glass hand shadow box
- 20 - Concrete paver

Bennetts Associates Architects
 1 Rawlstone Place London EC4V 3NL
 T +44 (0) 20 7520 3300 F +44 (0) 20 7520 3333
 E mail@bennettsassociates.com
 For Bennetts Associates' electronic information issue disclaimer -
www.bennettsassociates.com/information/efi-disclaimer/

Project
One Bedford Avenue
 Exemplar Properties (Bedford) Ltd.
 Drawing Title
Facade Bay Study
 Tottenham Court Road Elevation
 Retail Frontage

Drawing Number
1217_21_440

Scale @ A3
 1 : 50

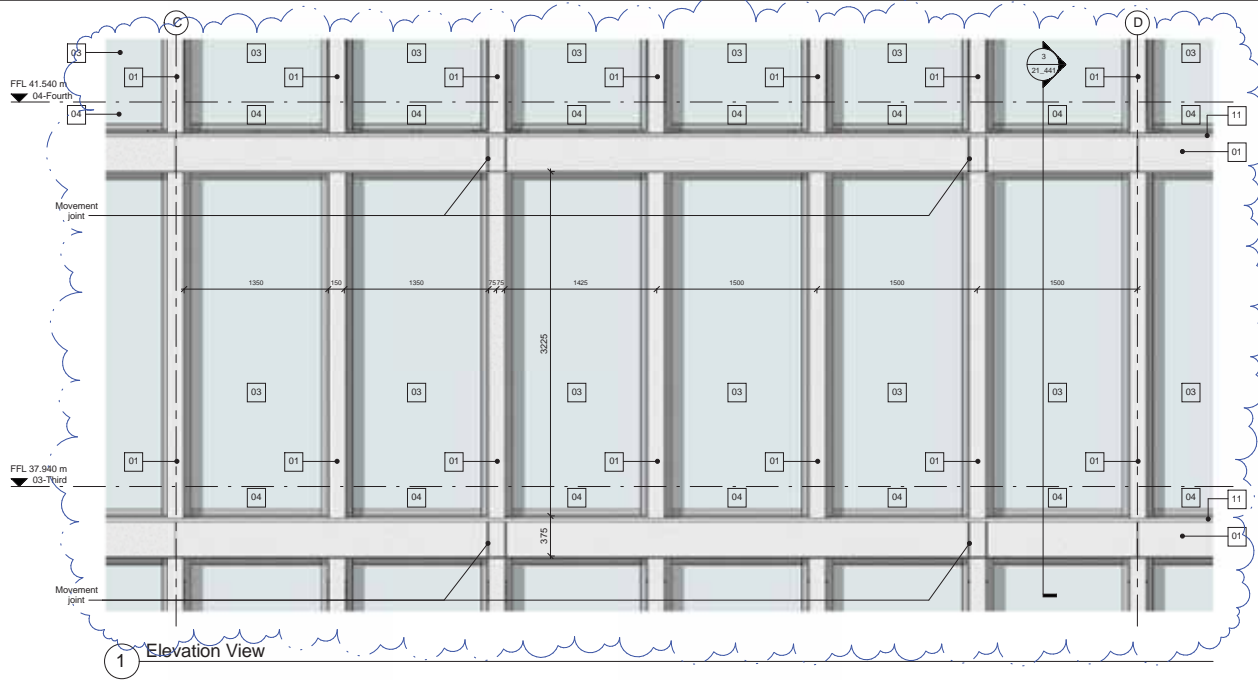
Scale @ A1
 1 : 25

Project No. 1217

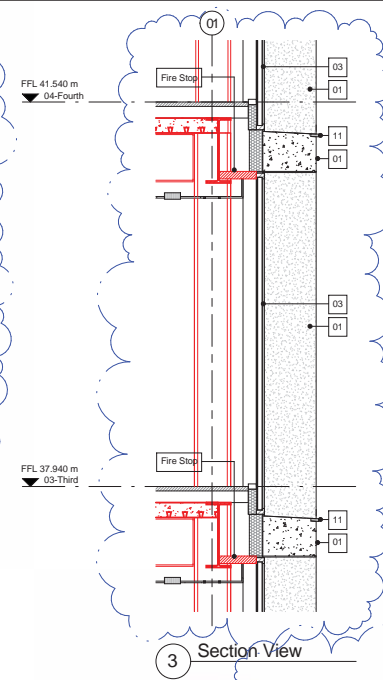
Revision
 A

Revision Date
 150519

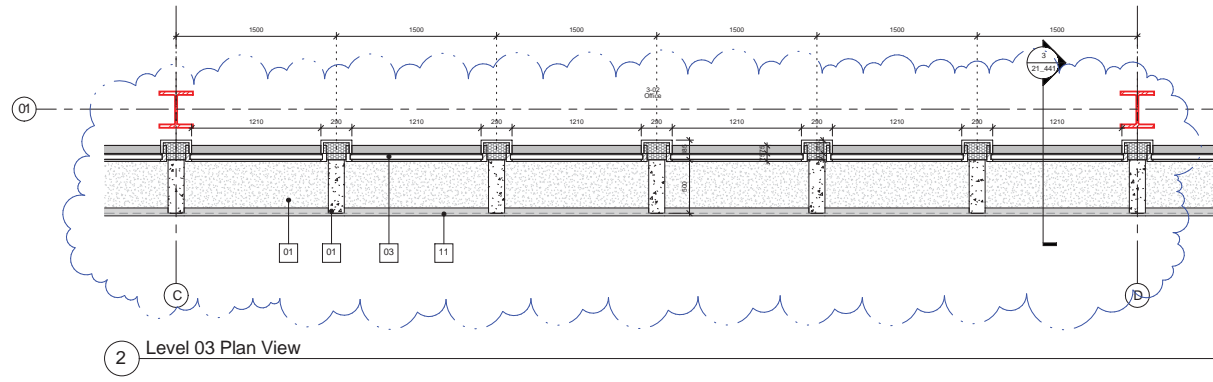
YY MM DD



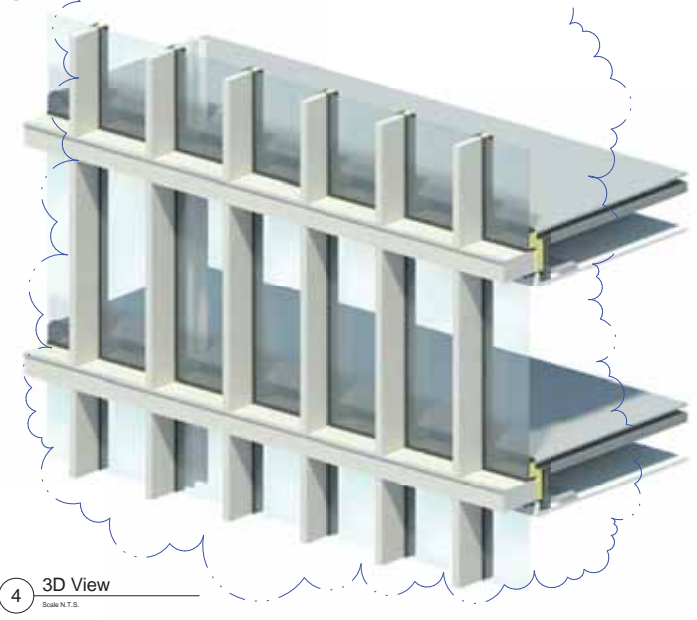
1 Elevation View



3 Section View



2 Level 03 Plan View



4 3D View
Scale N.T.S.

Revisions	By	Chk	Revisions	By	Chk
/ 141193 Issued for Envelope Tender	PB	DW			
A. 150519 Issued for Stage-4	PB	DW			

By	Chk	Revisions

Notes

1. All structural steel shown in red for clarity, the structure indicated on this drawing has been drawn by WSL.

01 - Precast concrete cladding
 02 - Bronze anodized aluminium
 03 - Stained double glazed unit, ceramic frit from FFL to 750mm
 04 - Stained double glazed panel, with full ceramic frit
 05 - Stained zinc faced insulated panel
 06 - Stained double glazed unit, with glass to glass horizontal joint
 07 - Glazed ACO window
 08 - Glazed drop front
 09 - Glazed door opening
 10 - Steel cable balustrade
 11 - PPC Flashing
 12 - Vertical aluminium architectural louvres with bird mesh to rear face
 13 - Architectural plant screen grille & gate
 14 - Green roof
 15 - Blinded stainless steel seawall
 16 - Datum band anti-graffiti treatment
 17 - White public art
 18 - European granite pavers
 19 - Cast hand structure box
 20 - Concrete power

Bennetts Associates Architects
 1 Rawlstone Place London EC1V 7NL
 T +44 (0) 20 7520 3300 F +44 (0) 20 7520 3333
 E mail@bennettsassociates.com
 For Bennetts Associates' electronic information issue disclaimer -
www.bennettsassociates.com/rawlstoneplace/

Project
 One Bedford Avenue
 Exemplar Properties (Bedford) Ltd.

Drawing Title
 Facade Bay Study
 Tottenham Court Road Elevation
 Second/Fifth Office Floor

Drawing Number
 1217_21_441

Revision
 A

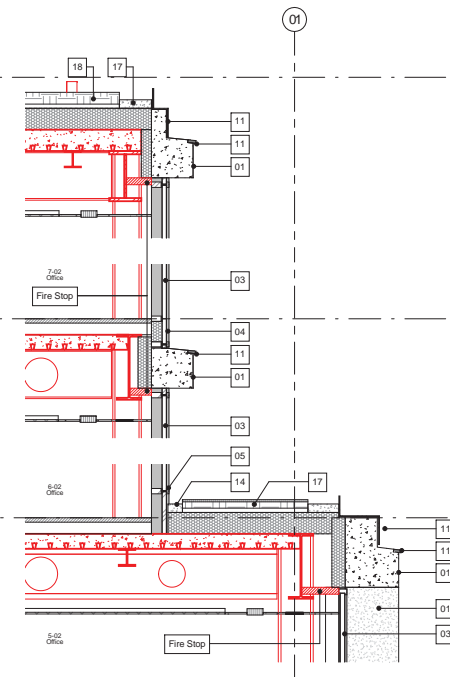
Scale @ A3 1:50
Scale @ A1 1:25

Revision Date
 150519

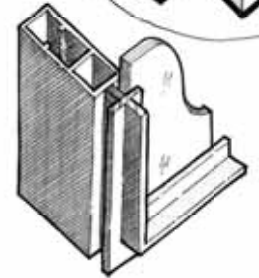
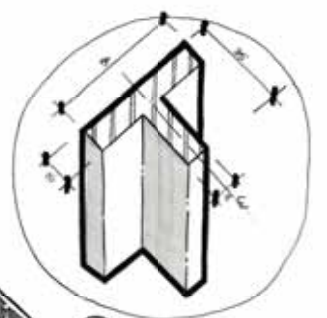
Project No. 1217
Revision A
Revision Date 150519
 YY MM DD



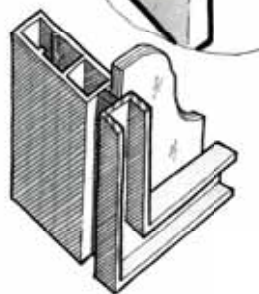
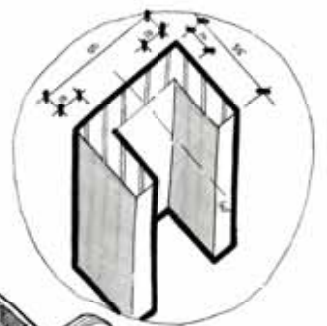
1 Elevation View



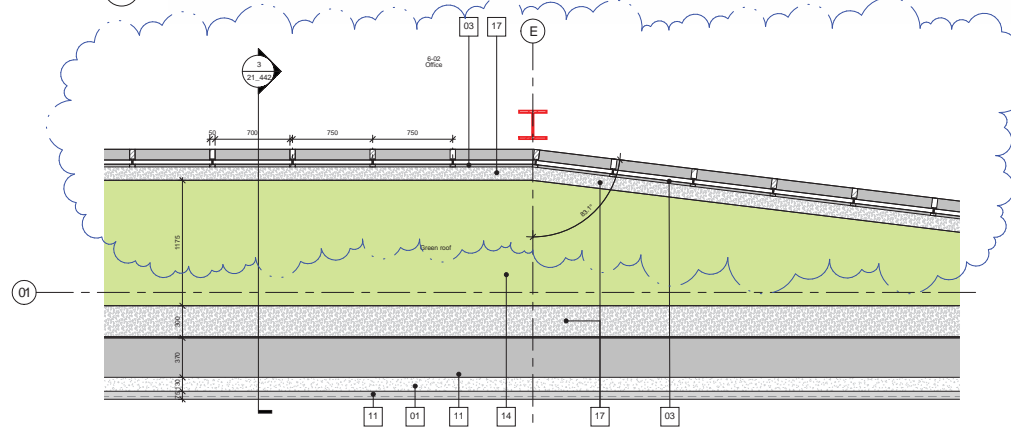
3 21-TCR Office 06



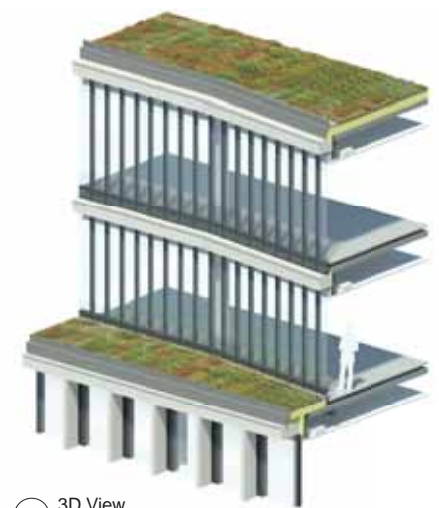
Range of standard cappings to be agreed with sub contractor



5 Capping detail options
Scale N.T.S.



2 Level 06 Plan View



4 3D View
Scale N.T.S.

Revisions	By	Chk
/ 141193 Issued for Envelope Tender	PB	DW
A 150519 Issued for Stage-4	PB	DW
B 150701 Amended for inclusion of CCF	KC	DW

Revisions	By	Chk
Drawing updates to this revision for CCF:		
1- CCF 016: 750mm mullion spacing to levels 6 and 7		
Tottenham Court Road elevation		

- Notes**
- All structural steel shown in red for clarity, the structure indicated on this drawing has been drawn by WSL.
 - 01 - Precast concrete cladding
 - 02 - Bronze anodised aluminium
 - 03 - Sulated double glazed unit, ceramic frit from FFL to 750mm
 - 04 - Glass based insulated panel, with full ceramic frit
 - 05 - Polished zinc faceted insulated panel
 - 06 - Sulated double glazed unit, with glass to glass horizontal joint
 - 07 - Glazed door opening
 - 08 - Glazed door opening
 - 09 - Glazed door opening
 - 10 - Steel cable balustrade
 - 11 - PPC Flashing
 - 12 - Vertical aluminium architectural louvers with bird mesh to rear face
 - 13 - Architectural plant screen grillage & gate
 - 14 - Green roof
 - 15 - Brushed stainless steel handrail
 - 16 - Datum band anti-graffiti treatment
 - 17 - White public balustr
 - 18 - European granite pavers
 - 19 - Glass hand/rail/brace box
 - 20 - Concrete paver

Bennetts Associates Architects
 1 Rawlstone Place London EC1V 7NL
 T +44 (0) 20 7520 3300 F +44 (0) 20 7520 3333
 E mail@bennettsassociates.com
 For Bennetts Associates' electronic information issue disclaimer ->
www.bennettsassociates.com/rawlstoneplace/rawl.htm

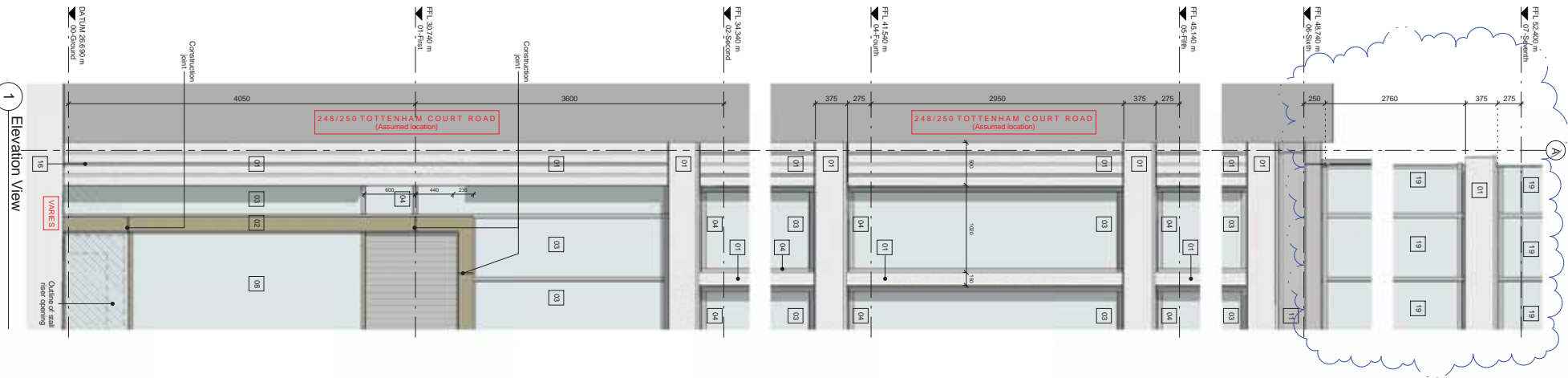
Project
One Bedford Avenue
 Exemplar Properties (Bedford) Ltd.
 Drawing Title
Facade Bay Study
 Tottenham Court Road Elevation
 Sixth/Seventh Office/Plantroom Floor

Drawing Number
1217_21_442

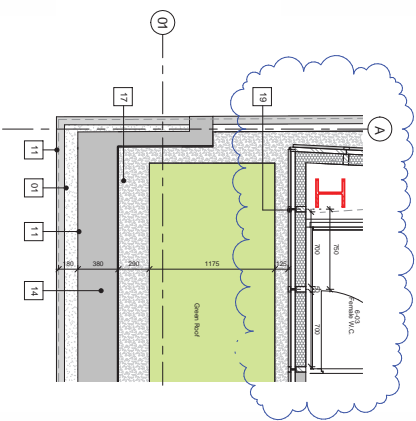
Project No. 1217

Revision
B

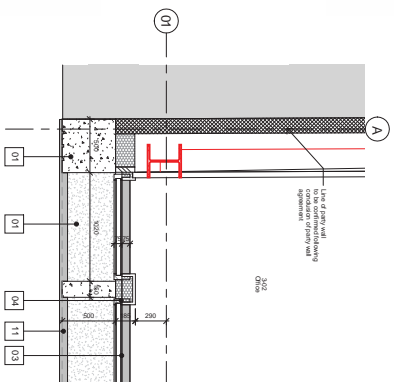
Scale @ A3 1:50 Scale @ A1 1:25
 Revision Date
 150701
 YV MM DD



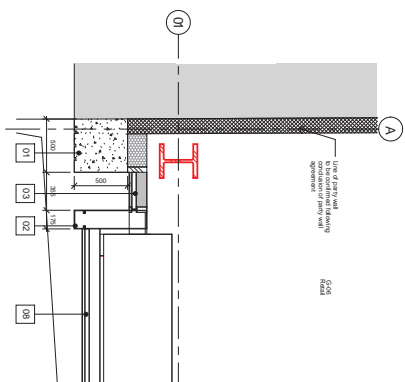
1 Elevation View



4 Level 06 Plan View



3 Level 03 Plan View



2 Level 00 Plan View



5 3D View

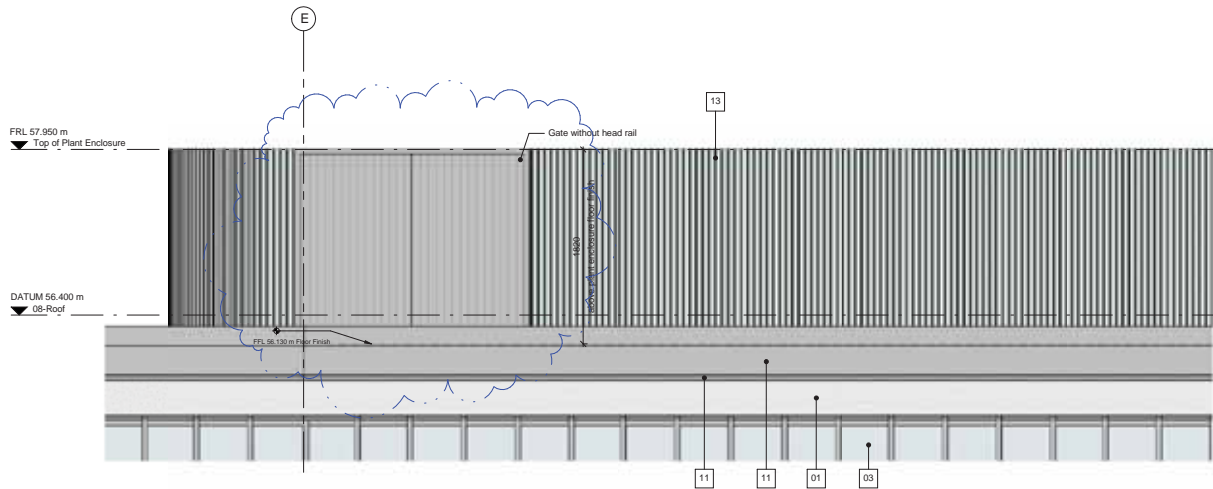
Revisions	By	Notes
7 / 141103	RM DW	Issued for Envelope Tender
8 / 150701	KC DW	Revised for inclusion of CCF
9 / 150701	KC DW	Revised for inclusion of CCF

As structural details shown in need for clarity, the architecture has been updated by NBSL. Drawing updates to this elevation for CCF: 1- CCF 016, 70thm, making spacing to levels 6 and 7 Tottenham Court Road elevation.

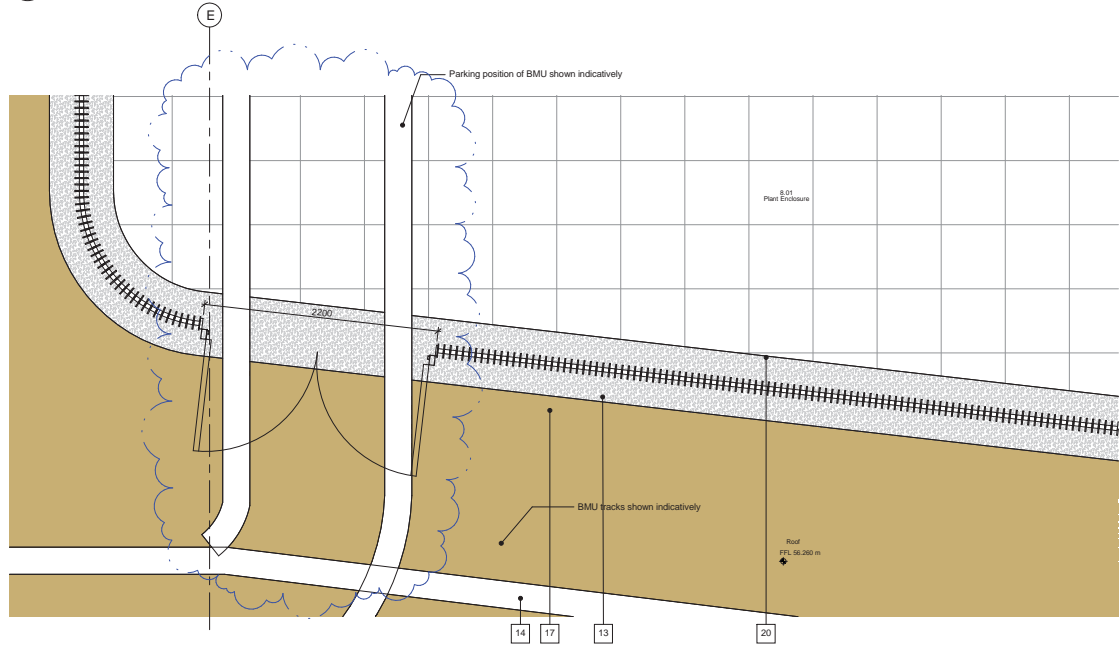
Bennett Associates Architects
 1 Ravenshoe Place London EC1V 7NL
 T +44 (0) 20 7520 5300 F +44 (0) 20 7520 5333
 info@bennettassociates.com www.bennettassociates.com

Project
One Bedford Avenue
 Exemplar Properties (Bedford) Ltd.
 Drawing Title
Facade Bay Study
 Tottenham Court Road Elevation
 Pany Wai

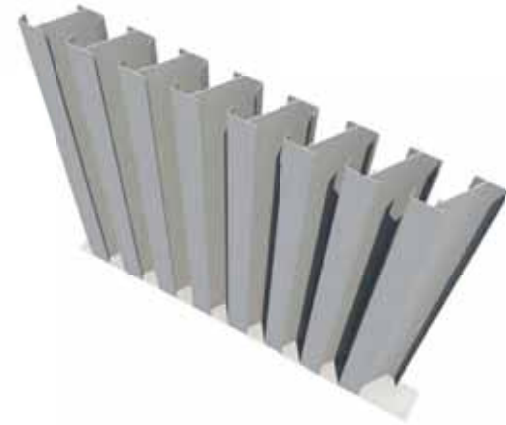
Project No.	Revision	Scale
1217	B	Scale @ A3
		Scale @ A1
		1:25
		1:50
		Revision Date
		15/01/20
		17/04/20



1 Elevation View



2 Level 08 Plan View



3 3D View of Louvres
Scale N.T.S.



4 View of Similar Plant Screen as Precedent

Revisions	By	Chk	Revisions	By	Chk
141103 Issued for Envelope Tender	PB	DW			
A. 150519 Issued for Stage 4	PB	DW			

By	Chk	Notes

All structural steel shown in red for clarity, the structure indicated on this drawing has been drawn by WSL.

- 01 - Precast concrete cladding
- 02 - Bronze anodised aluminium
- 03 - Stained double glazed unit, ceramic frit from FFL to 750mm
- 04 - Glass faced insulated panel, with full ceramic frit
- 05 - Painted zinc faced insulated panel
- 06 - Stained double glazed unit, with glass to glass horizontal joint
- 07 - Glazed PVC window
- 08 - Glazed shop front
- 09 - Glazed floor opening
- 10 - Steel cable Balustrade
- 11 - PPC Finishing
- 12 - Vertical aluminium architectural louvers with bird mesh to rear face
- 13 - Architectural plant screen grille & gate
- 14 - Green roof
- 15 - Stained stainless steel handrail
- 16 - Glazed hand over-grille treatment
- 17 - White powder coating
- 18 - Composite granite slabs
- 19 - Glass faced shadow box
- 20 - Concrete panel

Bennetts Associates Architects

1 Rawlstone Place London EC1V 7NL
T +44 (0) 20 7520 3300 F +44 (0) 20 7520 3333
E mail@bennettsassociates.com
www.bennettsassociates.com/rawlstoneplace/

Project
One Bedford Avenue
Exemplar Properties (Bedford) Ltd.

Drawing Title
Facade Bay Study
Tottenham Court Road Elevation
Plant Screen

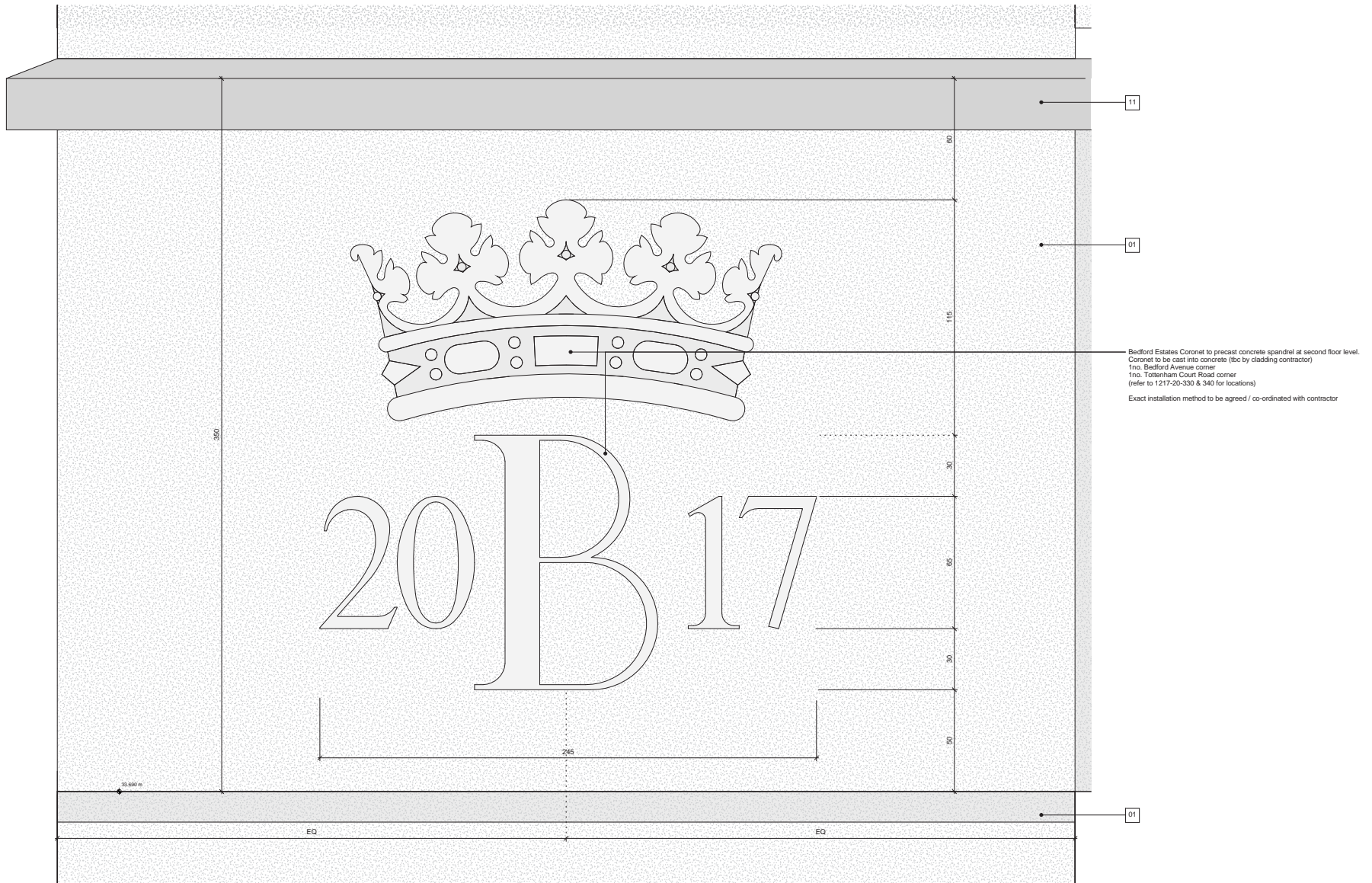
Drawing Number
1217_21_444

Scale @ A3 1:50
Scale @ A1 1:25

Revision
A

Revision Date
150519

Project No. 1217
YY MM DD



1 Cononet detailed elevation - Bedford Avenue and Tottenham Court Road corners
1:1

Revisions	By	Chk	Revisions	By	Chk	Notes
150701 Amended for inclusion of CCF	KC	DW				All structural steel shown in red for clarity, the structure indicated on this drawing has been drawn by WSL.
Drawing created for inclusion of CCF:						
1- CCF 021: Addition of Bedford Estates coronet to Tottenham Court Road and Bedford Avenue cladding						

Notes
01 - Precast concrete cladding
02 - Bronze anodised aluminium
03 - Sealed double glazed unit, ceramic frit from FFL to 750mm
04 - Glass bonded insulated panel, with 160 acoustic fill
05 - Perimeter zinc faced insulated panel
06 - Sealed double glazed unit, with glass to glass horizontal joint
07 - Glazed ADU window
08 - Glazed shop front
09 - Glazed door opening
10 - Steel cable balustrade
11 - PVC flashing
12 - Vertical aluminium architectural louvers with bird mesh to rear face
13 - Horizontal aluminium architectural louvers with bird mesh to rear face
14 - Green roof
15 - Brushed stainless steel handrail
16 - Datum band anti-graffiti treatment
17 - White wettable surface
18 - European granite pavers
19 - Glass bonded double pane
20 - Concrete paver

Bennetts Associates Architects
 1 Rowntree Place London EC1V 7NL
 T +44 (0) 20 7520 3300 F +44 (0) 20 7520 3333
 E mail@bennettsassociates.com
 For Bennetts Associates' electronic information issue disclaimer - www.bennettsassociates.com/information/issue-disclaimer/

Project
One Bedford Avenue
 Exemplar Properties (Bedford) Ltd.

Drawing Title
 Facade Bay Study
 Bedford Estates coronet detail
 Signage

Drawing Number
 1217_21_500

Scale @ A3 1:2
 Scale @ A1 As indicated

Revision Date
 150701

Project No. 1217
 YY MM DD