

One Bedford Avenue

With reference to Application 2014/6843/P

Discharge of Planning Condition 10

May 2016

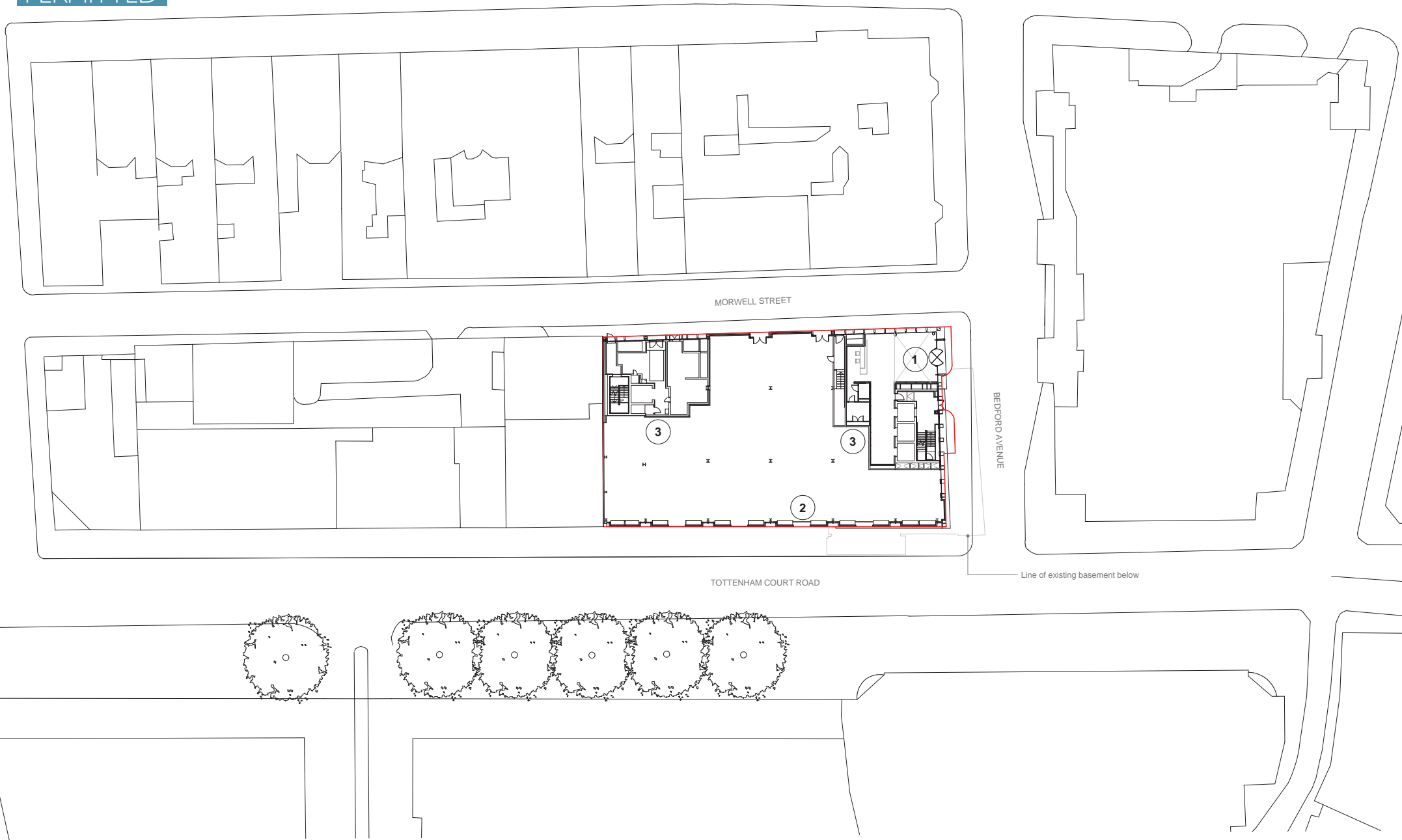


Bennetts Associates
Architects

2.0

PERMITTED PLANNING DRAWINGS

Drawing No.	Rev	Drawing Title
I217_P_001	E	Site Plan
I217_P_099	G	Basement Plan
I217_P_100	F	Ground Floor Plan
I217_P_101	F	First Floor Plan
I217_P_102	E	Second Floor Plan
I217_P_103	E	Third Floor Plan
I217_P_104	E	Fourth Floor Plan
I217_P_105	E	Fifth Floor Plan
I217_P_106	F	Sixth Floor Plan
I217_P_107	F	Seventh Floor Plan
I217_P_108	F	Roof Plan
I217_P_201	C	Section 01
I217_P_302	F	Morwell Street Elevation
I217_P_303	E	Bedford Avenue Elevation
I217_P_304	C	Tottenham Court Road Elevation
I217_P_401	B	Bay Study Tottenham Court Road
I217_P_402	B	Bay Study Bedford Avenue
I217_P_403	B	Bay Study Morwell Street



Revisions	By	Chk	Revisions	By	Chk	Notes
/ 130531 First Issue. Issued For Planning	MC	RB				
A 140815 Plan layout updated	KC	DW				
B 140819 Issued for Section 96A NMA	KC	DW				
C 140820 Amended for Planning issue	KC	DW				
D 141022 Issue for Section 79 NMA	KC	DW				
E 150602 Issued for Section 96A NMA	KC	DW				

- Revisions to proposed drawing**
- 1- Reception entrance portal amended due to design and technical detailed development
 - 2- Ground, 1st, 6th and 7th mullions on Tottenham Court Road elevation amended from 500mm spacing to 750mm spacing
 - 3- Minor rationalisation on interiors due to design development
 - 4- Cladding fin / curtain walling arrangement on Tottenham Court Road elevation amended between levels 2-6 due to technical detailed development
 - 5- Morwell Street balustrades on levels 4-7 amended from glass to stainless steel due to design development
 - 6- Photovoltaic panels reorientated to face south to improve energy efficiency
 - 7- Green roof amended to brown roof to improve / enhance ecological value of site
 - 8- Building mounted streetlamps indicated on Morwell Street elevation as per 'Agreement relating to street lighting' (CLS/WB/1548.25)
 - 9- Redundant neighbouring chimney removed
 - 10- Shopfronts amended due to design and technical detailed development
 - 11- Morwell Street grille reorientated vertically to improve aesthetic appearance
 - 12- Bedford Estates crest / coronet added to Tottenham Court Road and Bedford Avenue corners of cladding
 - 13- Parapets and grille amended from anodised aluminium to PPC aluminium
 - 14- Opening window added for natural smoke ventilation strategy

Bennetts Associates Architects
 1 Rawlstone Place London EC1V 7NL
 T +44 (0) 20 7520 3300 F +44 (0) 20 7520 3333
 E mail@bennettsassociates.com
For Bennetts Associates' electronic information issue disclaimer -> www.bennettsassociates.com/informationforclients/

Project
 One Bedford Avenue
 Exemplar Properties (Bedford) Ltd.

Drawing Title
 Planning
 Site Plan

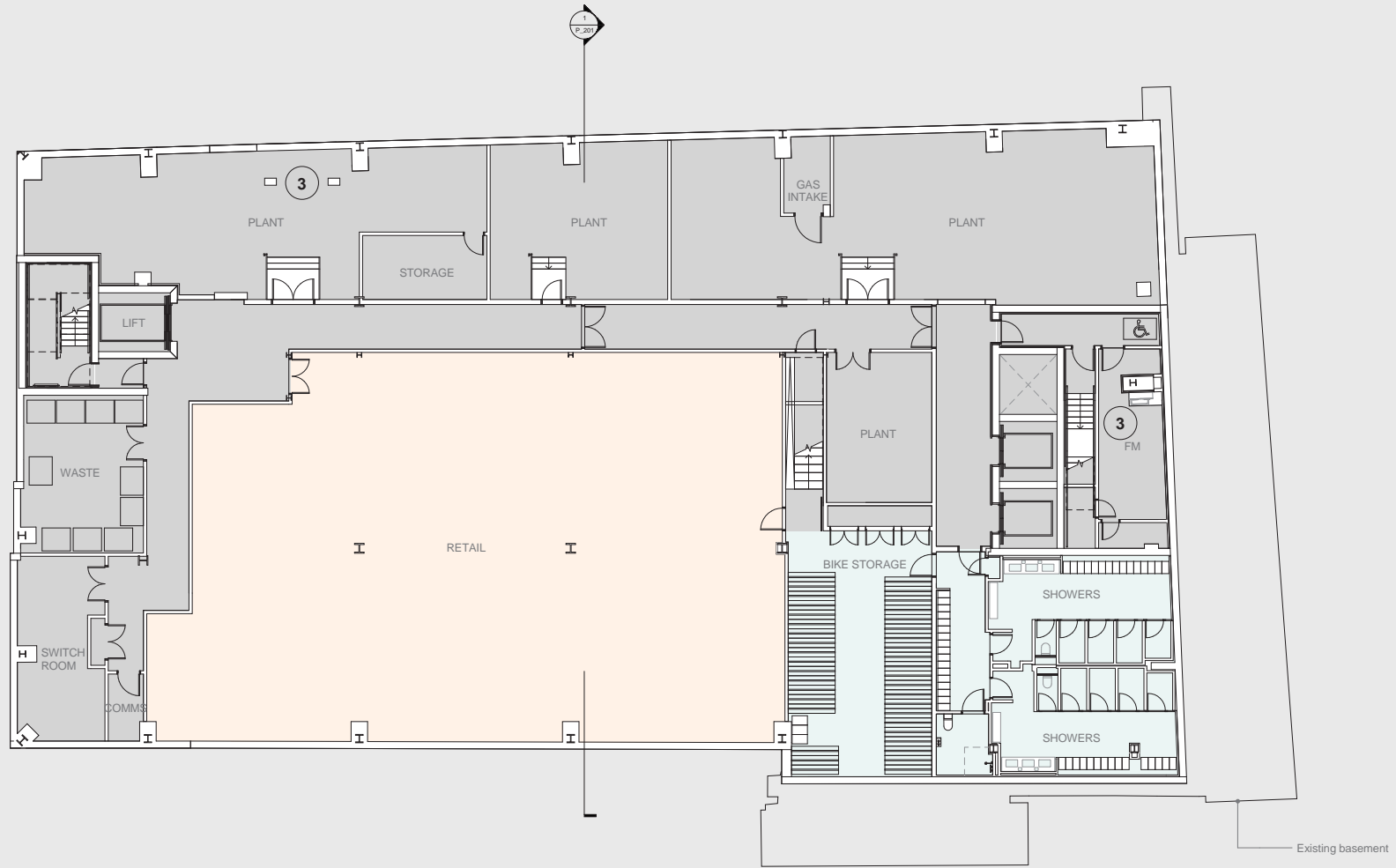
Drawing Number
 1217_P_001

Scale @ A3 1 : 500 **Scale @ A1** 1 : 250 **Revision Date** 150602

Project No. 1217

Revision
 E

YY MM DD



Revisions	By	Chk	Revisions	By	Chk	Notes
F 130531 First Issue. Issued For Planning	NC	RB				
A 130828 Enlargement of shower room	NC	RB				
B 140809 Issued for drawing substitution for NMA	SP	DW				
C 140815 Plan layout updated	KC	DW				
D 140819 Issued for Section 96A NMA	NC	DW				
E 141022 Issue for Section 73 MMA	KC	DW				
F 150428 Issued for information	PB	DW				
G 150602 Issued for Section 96A NMA	KC	DW				

By	Chk	Notes
		Revisions to proposed drawing

- 1- Reception entrance portal amended due to design and technical detailed development
- 2- Ground, 1st, 6th and 7th mullions on Tottenham Court Road elevation amended from 500mm spacing to 750mm spacing
- 3- Minor rationalisation on interiors due to design development
- 4- Cladding fin / curtain walling arrangement on Tottenham Court Road elevation amended between levels 2-6 due to technical detailed development
- 5- Morwell Street balustrades on levels 4-7 amended from glass to stainless steel due to design development
- 6- Photovoltaic panels reorientated to face south to improve energy efficiency
- 7- Green roof amended to brown roof to improve / enhance ecological value of site
- 8- Building mounted streetlamps indicated on Morwell Street elevation as per 'Agreement relating to street lighting' (CLS/WB/1548.25)
- 9- Redundant neighbouring chimney removed
- 10- Shopfronts amended due to design and technical detailed development
- 11- Morwell Street grille reorientated vertically to improve aesthetic appearance
- 12- Bedford Estates crest / coronet added to Tottenham Court Road and Bedford Avenue corners of cladding
- 13- Parapets and grillage amended from anodised aluminium to PPC aluminium
- 14- Opening window added for natural smoke ventilation strategy

Bennetts Associates Architects
 1 Rawlstone Place London EC1V 7NL
 T +44 (0) 20 7520 3300 F +44 (0) 20 7520 3333
 E mail@bennettsassociates.com
For Bennetts Associates' electronic information issue disclaimer -> www.bennettsassociates.com/information/disclaimer/

Project
One Bedford Avenue
 Exemplar Properties (Bedford) Ltd.

Drawing Title
Planning
 Basement Plan

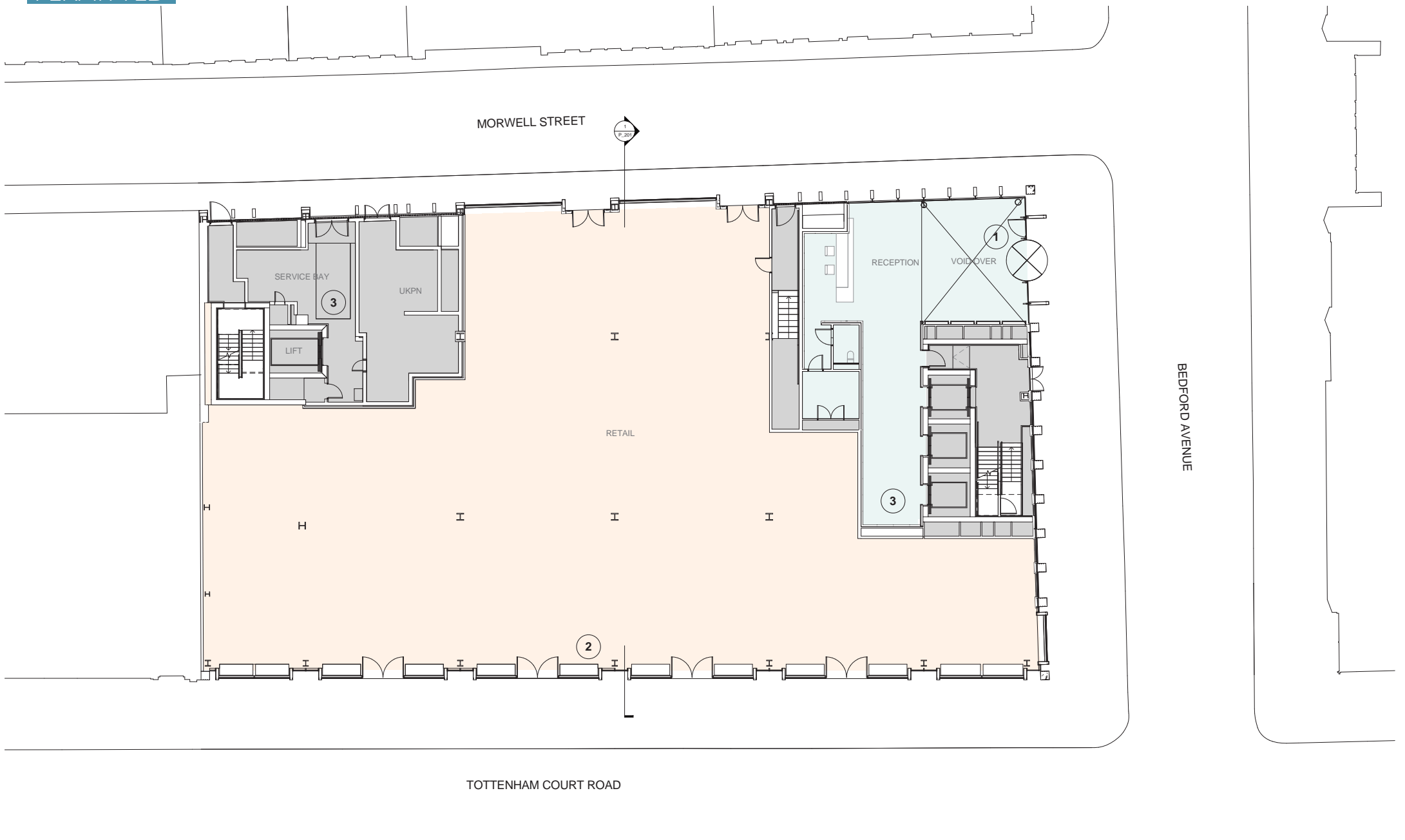
Project No. 1217

Drawing Number
 1217_P_099

Scale @ A3 1:200 Scale @ A1 1:100 Revision Date 150602

Revision
 G

YY MM DD



Revisions	By	Chk	Revisions	By	Chk	Notes
F 130531 First Issue. Issued For Planning	MC	RB				
A 130910 Amended for planning	MC	RB				
B 140815 Plan layout updated	KC	DW				
C 140819 Issued for Section 96A NMA	KC	DW				
D 141022 Issue for Section 73 MMA	KC	DW				
E 150428 Issued for information	PB	DW				
F 150602 Issued for Section 96A NMA	KC	DW				

- Revisions to proposed drawing**
- 1- Reception entrance portal amended due to design and technical detailed development
 - 2- Ground, 1st, 6th and 7th mullions on Tottenham Court Road elevation amended from 500mm spacing to 750mm spacing
 - 3- Minor rationalisation on interiors due to design development
 - 4- Cladding fin / curtain walling arrangement on Tottenham Court Road elevation amended between levels 2-6 due to technical detailed development
 - 5- Morwell Street balustrades on levels 4-7 amended from glass to stainless steel due to design development
 - 6- Photovoltaic panels reorientated to face south to improve energy efficiency
 - 7- Green roof amended to brown roof to improve / enhance ecological value of site
 - 8- Building mounted streetlamps indicated on Morwell Street elevation as per 'Agreement relating to street lighting' (CLS/WB/1548.25)
 - 9- Redundant neighbouring chimney removed
 - 10- Shopfronts amended due to design and technical detailed development
 - 11- Morwell Street grille reorientated vertically to improve aesthetic appearance
 - 12- Bedford Estates crest / coronet added to Tottenham Court Road and Bedford Avenue corners of cladding
 - 13- Parapets and grille amended from anodised aluminium to PPC aluminium
 - 14- Opening window added for natural smoke ventilation strategy

Bennetts Associates Architects
 1 Rawlstone Place London EC1V 7NL
 T +44 (0) 20 7620 3300 F +44 (0) 20 7620 3333
 E mail@bennettsassociates.com
www.bennettsassociates.com/information/our-disclaimer/

Project
One Bedford Avenue
 Exemplar Properties (Bedford) Ltd.

Drawing Title
 Planning
 Ground Floor Plan

Drawing Number
 1217_P_100

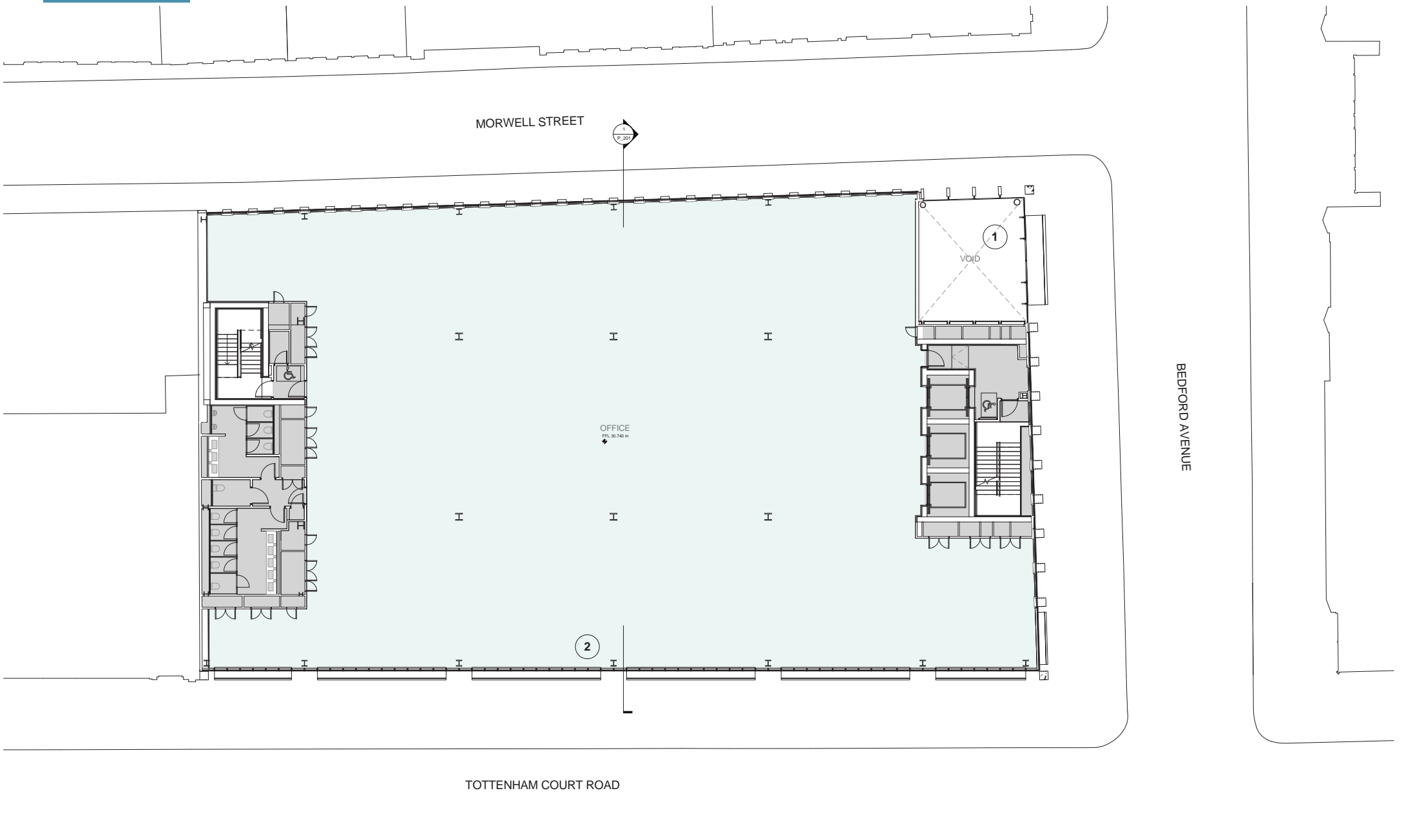
Scale @ A3 1:200 Scale @ A1 1:100 Revision Date 150602

Project No. 1217

Revision
 F

YY MM DD

PERMITTED



Revisions	By	Chk	Revisions	By	Chk	Notes
/ 130531 First Issue. Issued For Planning	MC	RB				
A 130910 Amended for planning	MC	RB				
B 140815 Plan layout updated	KC	DW				
C 140819 Issued for Section 96A NMA	KC	DW				
D 141022 Issue for Section 73 MMA	KC	DW				
E 150428 Issued for information	PB	DW				
F 150602 Issued for Section 96A NMA	KC	DW				

- Revisions to proposed drawing**
- 1- Reception entrance portal amended due to design and technical detailed development
 - 2- Ground, 1st, 6th and 7th mullions on Tottenham Court Road elevation amended from 500mm spacing to 750mm spacing
 - 3- Minor rationalisation on interiors due to design development
 - 4- Cladding fin / curtain walling arrangement on Tottenham Court Road elevation amended between levels 2-6 due to technical detailed development
 - 5- Morwell Street balustrades on levels 4-7 amended from glass to stainless steel due to design development
 - 6- Photovoltaic panels reorientated to face south to improve energy efficiency
 - 7- Green roof amended to brown roof to improve / enhance ecological value of site
 - 8- Building mounted streetlamps indicated on Morwell Street elevation as per 'Agreement relating to street lighting' (CLS/WB/1548.25)
 - 9- Redundant neighbouring chimney removed
 - 10- Shopfronts amended due to design and technical detailed development
 - 11- Morwell Street grille reorientated vertically to improve aesthetic appearance
 - 12- Bedford Estates crest / coronet added to Tottenham Court Road and Bedford Avenue corners of cladding
 - 13- Parapets and grillage amended from anodised aluminium to PPC aluminium
 - 14- Opening window added for natural smoke ventilation strategy

Bennetts Associates Architects
 1 Rawlstone Place London EC1V 7NL
 T +44 (0) 20 7520 3300 F +44 (0) 20 7520 3333
 E mail@bennettsassociates.com
[For Bennetts Associates' electronic information issue disclaimer ->](http://www.bennettsassociates.com/information/our-disclaimer/)

Project
 One Bedford Avenue
 Exemplar Properties (Bedford) Ltd.

Drawing Title
 Planning
 First Floor Plan

Drawing Number
 1217_P_101

Scale @ A3
 1 : 200

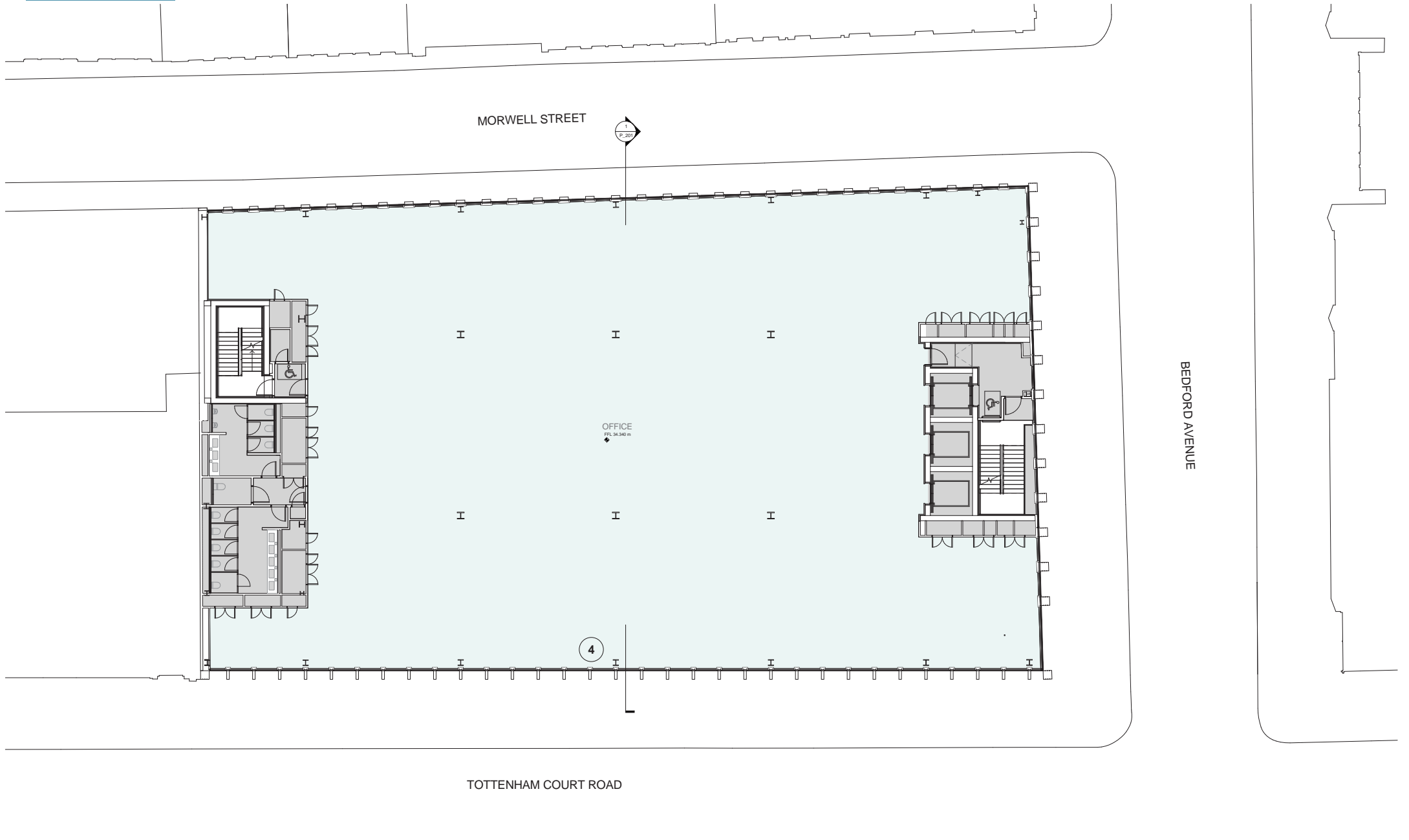
Scale @ A1
 1 : 100

Revision Date
 150602

Project No. 1217

Revision
 F

YY MM DD



Revisions	By	Chk	Revisions	By	Chk	Notes
F / 130531 First Issue. Issued For Planning	MC	RB				
A 140815 Plan layout updated	KC	DW				
B 140819 Issued for Section 96A NMA	KC	DW				
C 141022 Issue for Section 73 MMA	KC	DW				
D 150428 Issued for Information	FB	DW				
E 150602 Issued for Section 96A NMA	KC	DW				

- Revisions to proposed drawing**
- 1- Reception entrance portal amended due to design and technical detailed development
 - 2- Ground, 1st, 6th and 7th mullions on Tottenham Court Road elevation amended from 500mm spacing to 750mm spacing
 - 3- Minor rationalisation on interiors due to design development
 - 4- Cladding fin / curtain walling arrangement on Tottenham Court Road elevation amended between levels 2-6 due to technical detailed development
 - 5- Morwell Street balustrades on levels 4-7 amended from glass to stainless steel due to design development
 - 6- Photovoltaic panels reorientated to face south to improve energy efficiency
 - 7- Green roof amended to brown roof to improve / enhance ecological value of site
 - 8- Building mounted streetlamps indicated on Morwell Street elevation as per 'Agreement relating to street lighting' (CLS/WB/1548.25)
 - 9- Redundant neighbouring chimney removed
 - 10- Shopfronts amended due to design and technical detailed development
 - 11- Morwell Street grille reorientated vertically to improve aesthetic appearance
 - 12- Bedford Estates crest / coronet added to Tottenham Court Road and Bedford Avenue corners of cladding
 - 13- Parapets and grillage amended from anodised aluminium to PPC aluminium
 - 14- Opening window added for natural smoke ventilation strategy

Bennetts Associates Architects
 1 Rawlstone Place London EC1V 7NL
 T +44 (0) 20 7520 3300 F +44 (0) 20 7520 3333
 E mail@bennettsassociates.com
For Bennetts Associates' electronic information issue disclaimer ->
www.bennettsassociates.com/information/ourdisclaimer/

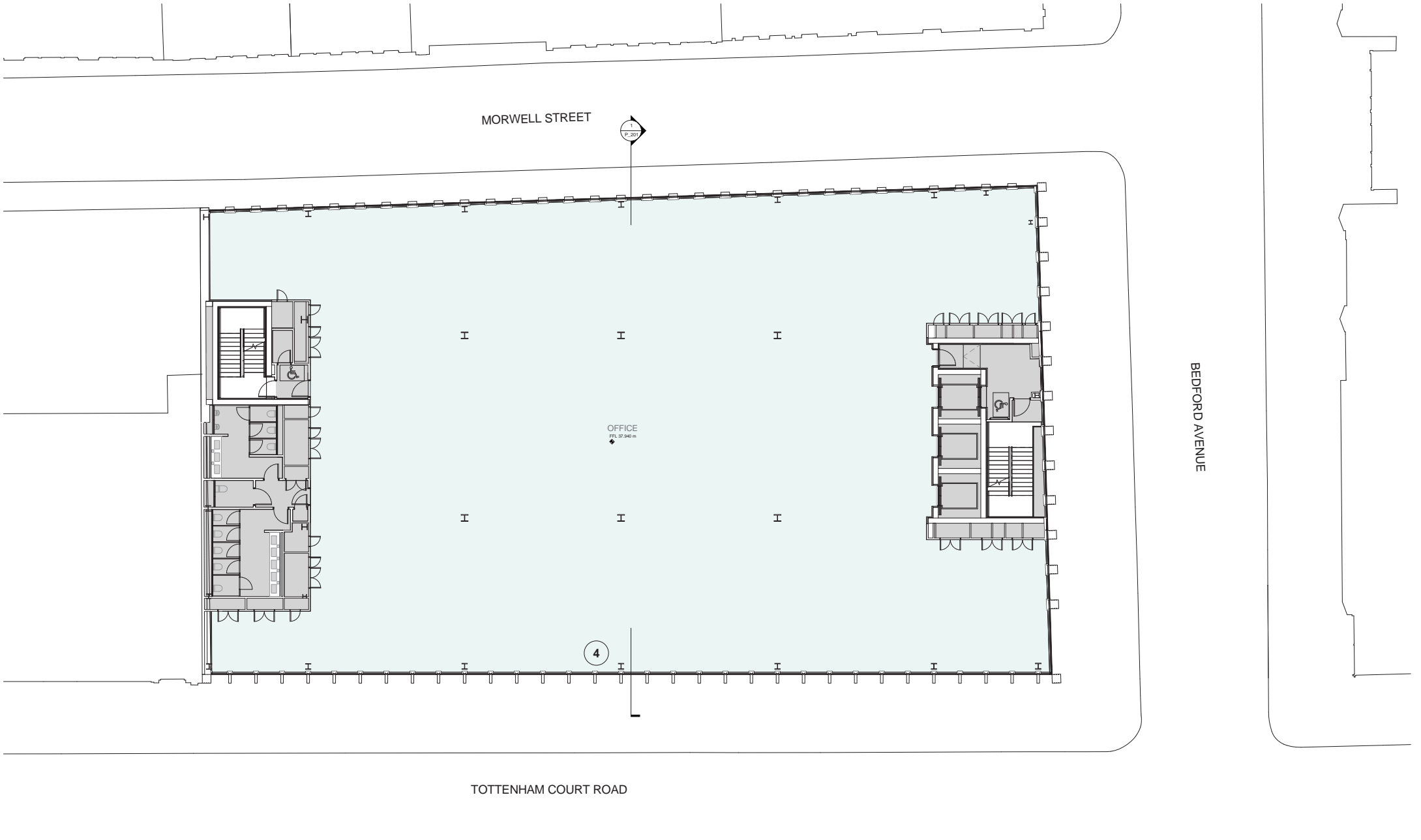
Project
One Bedford Avenue
 Exemplar Properties (Bedford) Ltd.

Drawing Title
 Planning
 Second Floor Plan

Drawing Number
 1217_P_102

Revision
 E

Scale @ A3 1 : 200 Scale @ A1 1 : 100 Revision Date 150602
 YY MM DD



Revisions	By	Chk	Revisions	By	Chk	Notes
F / 130531 First Issue. Issued For Planning	MC	RB				
A 140815 Plan layout updated	KC	DW				
B 140819 Issued for Section 96A NMA	KC	DW				
C 141022 Issue for Section 73 MMA	KC	DW				
D 150428 Issued for Information	FB	DW				
E 150602 Issued for Section 96A NMA	KC	DW				

- Revisions to proposed drawing**
- 1- Reception entrance portal amended due to design and technical detailed development
 - 2- Ground, 1st, 6th and 7th mullions on Tottenham Court Road elevation amended from 500mm spacing to 750mm spacing
 - 3- Minor rationalisation on interiors due to design development
 - 4- Cladding fin / curtain walling arrangement on Tottenham Court Road elevation amended between levels 2-6 due to technical detailed development
 - 5- Morwell Street balustrades on levels 4-7 amended from glass to stainless steel due to design development
 - 6- Photovoltaic panels reorientated to face south to improve energy efficiency
 - 7- Green roof amended to brown roof to improve / enhance ecological value of site
 - 8- Building mounted streetlamps indicated on Morwell Street elevation as per 'Agreement relating to street lighting' (CLS/WB/1548.25)
 - 9- Redundant neighbouring chimney removed
 - 10- Shopfronts amended due to design and technical detailed development
 - 11- Morwell Street grillage reorientated vertically to improve aesthetic appearance
 - 12- Bedford Estates crest / coronet added to Tottenham Court Road and Bedford Avenue corners of cladding
 - 13- Parapets and grillage amended from anodised aluminium to PPC aluminium
 - 14- Opening window added for natural smoke ventilation strategy

Bennetts Associates Architects
 1 Rawlstone Place London EC1V 7NL
 T +44 (0) 20 7520 3300 F +44 (0) 20 7520 3333
 E mail@bennettsassociates.com
For Bennetts Associates' electronic information issue disclaimer -> www.bennettsassociates.com/informationforclient/

Project: **One Bedford Avenue**
 Exemplar Properties (Bedford) Ltd.

Drawing Title: **Planning**
 Third Floor Plan

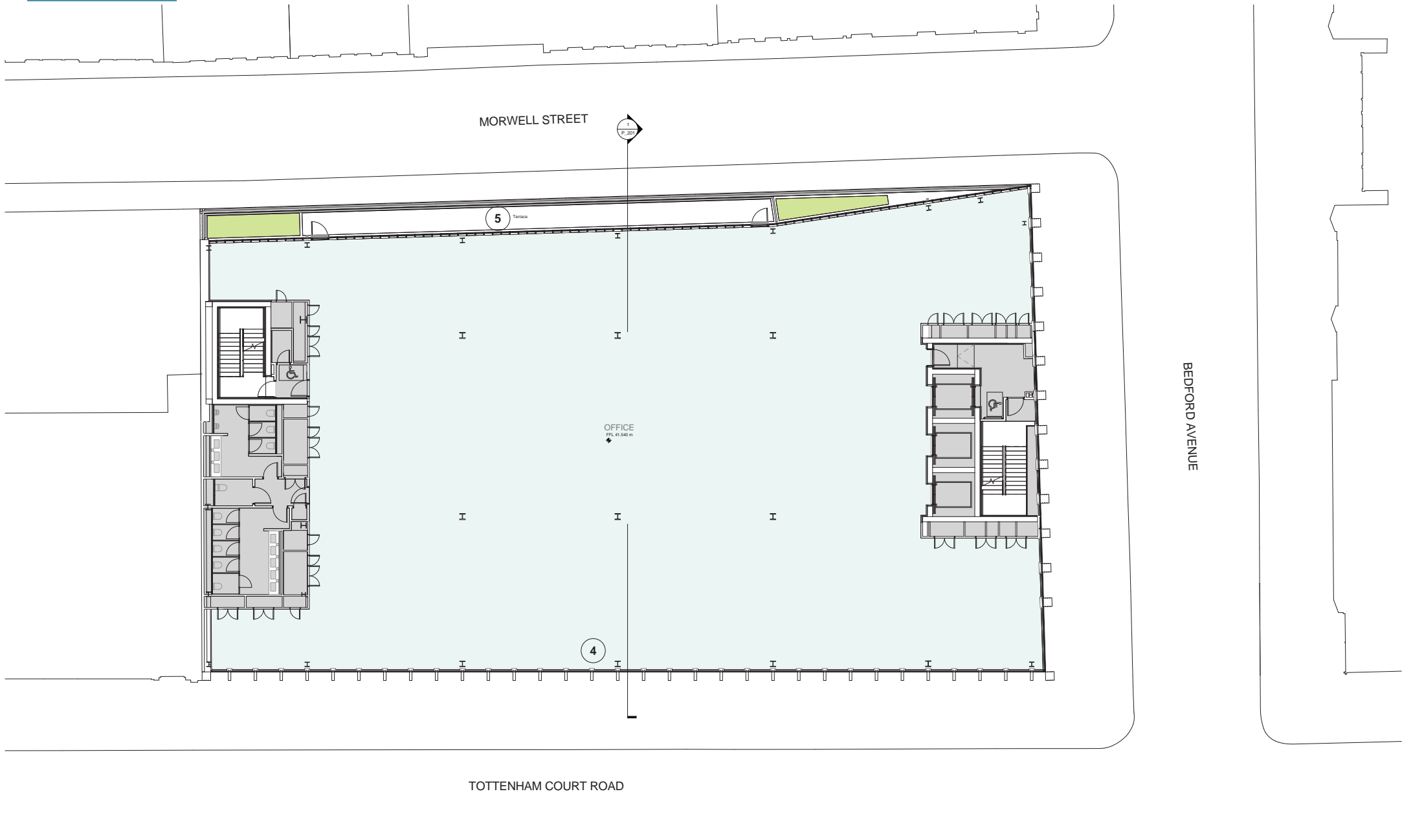
Drawing Number: **1217_P_103**

Scale @ A3: 1:200 | Scale @ A1: 1:100 | Revision Date: 150602

Project No. 1217

Revision: **E**

YY MM DD



Revisions	By	Chk	Revisions	By	Chk	Notes
F / 130531 First Issue. Issued For Planning	NC	RB				
A 140815 Plan layout updated	KC	DW				
B 140819 Issued for Section 96A NMA	KC	DW				
C 141022 Issue for Section 73 MMA	KC	DW				
D 150428 Issued for Information	FB	DW				
E 150602 Issued for Section 96A NMA	KC	DW				

- Revisions to proposed drawing**
- 1- Reception entrance portal amended due to design and technical detailed development
 - 2- Ground, 1st, 6th and 7th mullions on Tottenham Court Road elevation amended from 500mm spacing to 750mm spacing
 - 3- Minor rationalisation on interiors due to design development
 - 4- Cladding fin / curtain walling arrangement on Tottenham Court Road elevation amended between levels 2-6 due to technical detailed development
 - 5- Morwell Street balustrades on levels 4-7 amended from glass to stainless steel due to design development
 - 6- Photovoltaic panels reorientated to face south to improve energy efficiency
 - 7- Green roof amended to brown roof to improve / enhance ecological value of site
 - 8- Building mounted streetlamps indicated on Morwell Street elevation as per 'Agreement relating to street lighting' (CLS/WB/1548.25)
 - 9- Redundant neighbouring chimney removed
 - 10- Shopfronts amended due to design and technical detailed development
 - 11- Morwell Street grillage reorientated vertically to improve aesthetic appearance
 - 12- Bedford Estates crest / coronet added to Tottenham Court Road and Bedford Avenue corners of cladding
 - 13- Parapets and grillage amended from anodised aluminium to PPC aluminium
 - 14- Opening window added for natural smoke ventilation strategy

Bennetts Associates Architects
 1 Rawlstone Place London EC1V 7NL
 T +44 (0) 20 7620 3300 F +44 (0) 20 7620 3333
 E mail@bennettsassociates.com
For Bennetts Associates' electronic information issue disclaimer -> www.bennettsassociates.com/informationforclient/

Project: **One Bedford Avenue**
 Exemplar Properties (Bedford) Ltd.

Drawing Title: **Planning**
 Fourth Floor Plan

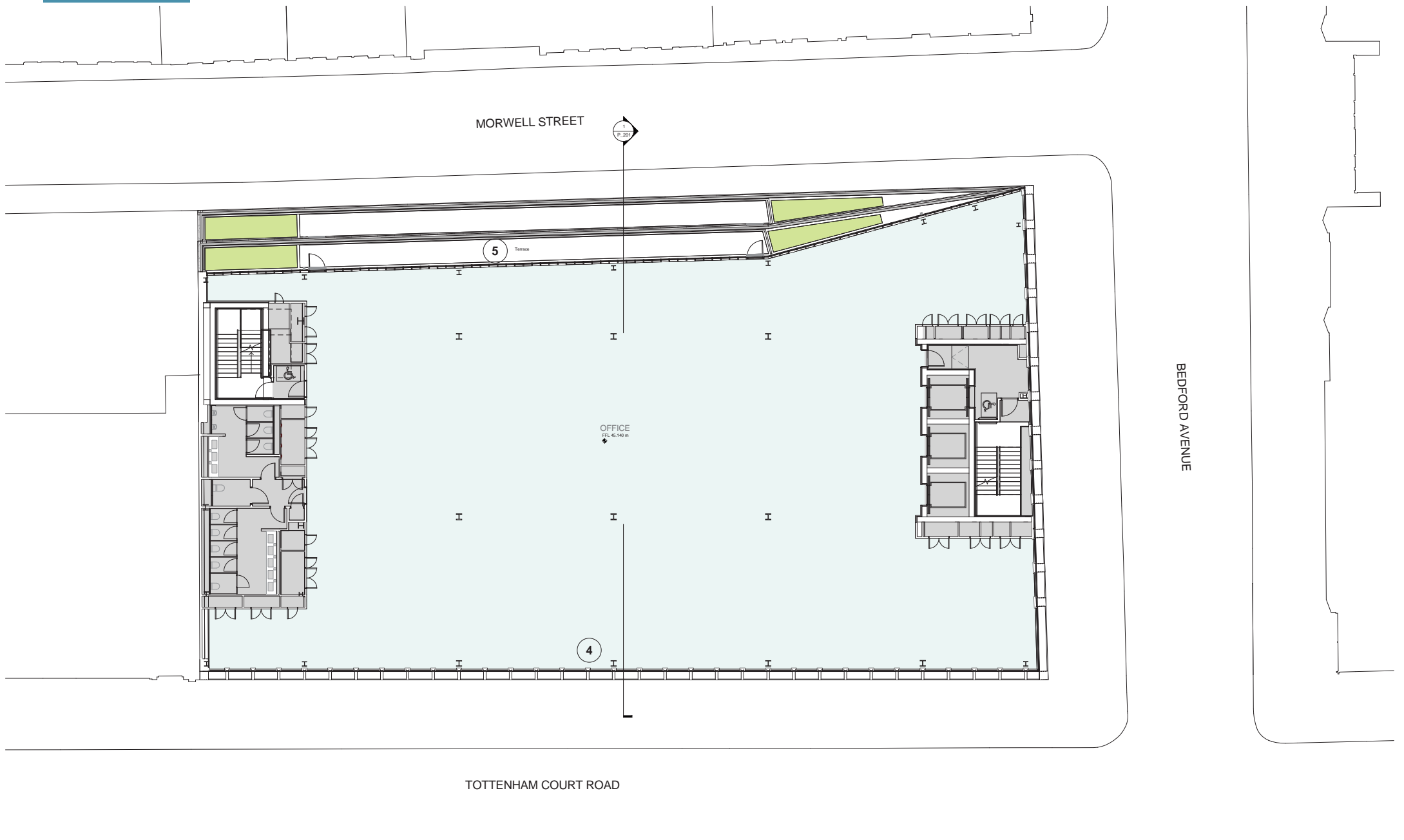
Drawing Number: **1217_P_104**

Scale @ A3: 1:200 | Scale @ A1: 1:100 | Revision Date: 150602

Project No. 1217

Revision: **E**

YY MM DD



Revisions	By	Chk	Revisions	By	Chk	Notes
F / 130531 First Issue. Issued For Planning	NC	RB				
A 140815 Plan layout updated	KC	DW				
B 140819 Issued for Section 96A NMA	KC	DW				
C 141022 Issue for Section 73 MMA	KC	DW				
D 150428 Issued for Information	FB	DW				
E 150602 Issued for Section 96A NMA	KC	DW				

- Revisions to proposed drawing**
- 1- Reception entrance portal amended due to design and technical detailed development
 - 2- Ground, 1st, 6th and 7th mullions on Tottenham Court Road elevation amended from 500mm spacing to 750mm spacing
 - 3- Minor rationalisation on interiors due to design development
 - 4- Cladding fin / curtain walling arrangement on Tottenham Court Road elevation amended between levels 2-6 due to technical detailed development
 - 5- Morwell Street balustrades on levels 4-7 amended from glass to stainless steel due to design development
 - 6- Photovoltaic panels reorientated to face south to improve energy efficiency
 - 7- Green roof amended to brown roof to improve / enhance ecological value of site
 - 8- Building mounted streetlamps indicated on Morwell Street elevation as per 'Agreement relating to street lighting' (CLS/WB/1548.25)
 - 9- Redundant neighbouring chimney removed
 - 10- Shopfronts amended due to design and technical detailed development
 - 11- Morwell Street grillage reorientated vertically to improve aesthetic appearance
 - 12- Bedford Estates crest / coronet added to Tottenham Court Road and Bedford Avenue corners of cladding
 - 13- Parapets and grillage amended from anodised aluminium to PPC aluminium
 - 14- Opening window added for natural smoke ventilation strategy

Bennetts Associates Architects
 1 Rawlstone Place London EC1V 7NL
 T +44 (0) 20 7520 3300 F +44 (0) 20 7520 3333
 E mail@bennettsassociates.com
For Bennetts Associates' electronic information issue disclaimer -> www.bennettsassociates.com/informationforclients/

Project
One Bedford Avenue
 Exemplar Properties (Bedford) Ltd.

Drawing Title
 Planning
 Fifth Floor Plan

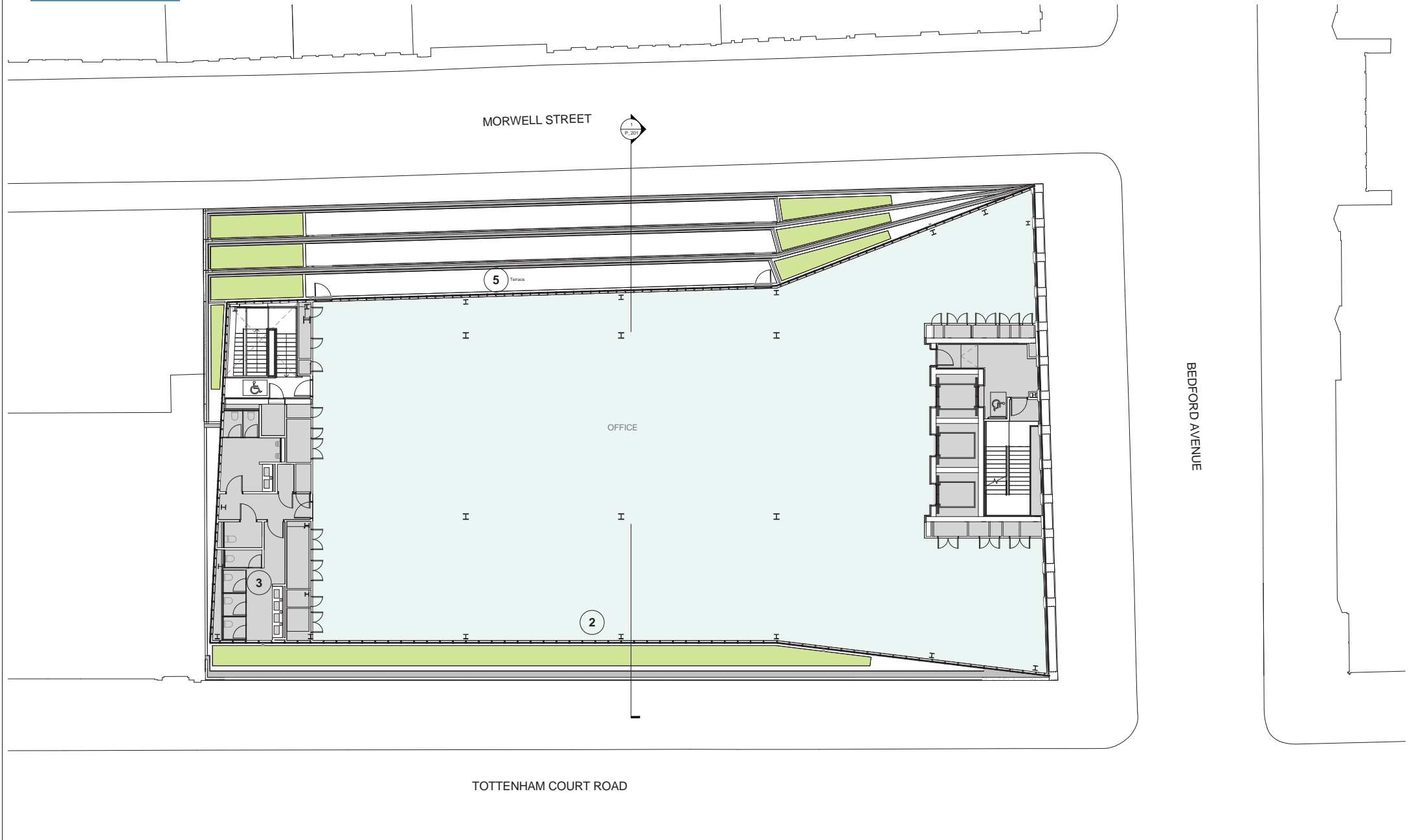
Drawing Number
 1217_P_105

Scale @ A3 1:200 Scale @ A1 1:100 Revision Date 150602

Project No. 1217

Revision E

YY MM DD



Revisions	By	Chk	Revisions	By	Chk	Notes
F 130531 First Issue. Issued For Planning	MC	RB				
A 140815 Plan layout updated	KC	DW				
B 140819 Issued for Section 96A NMA	KC	DW				
C 140929 Amended for Section 96A NMA	KC	DW				
D 141022 Issue for Section 73 MMA	KC	DW				
E 150428 Issued for information	PB	DW				
F 150602 Issued for Section 96A NMA	KC	DW				

- Revisions to proposed drawing**
- 1- Reception entrance portal amended due to design and technical detailed development
 - 2- Ground, 1st, 6th and 7th mullions on Tottenham Court Road elevation amended from 500mm spacing to 750mm spacing
 - 3- Minor rationalisation on interiors due to design development
 - 4- Cladding fin / curtain walling arrangement on Tottenham Court Road elevation amended between levels 2-6 due to technical detailed development
 - 5- Morwell Street balustrades on levels 4-7 amended from glass to stainless steel due to design development
 - 6- Photovoltaic panels reorientated to face south to improve energy efficiency
 - 7- Green roof amended to brown roof to improve / enhance ecological value of site
 - 8- Building mounted streetlamps indicated on Morwell Street elevation as per 'Agreement relating to street lighting' (CLS/WB/1548.25)
 - 9- Redundant neighbouring chimney removed
 - 10- Shopfronts amended due to design and technical detailed development
 - 11- Morwell Street grille reorientated vertically to improve aesthetic appearance
 - 12- Bedford Estates crest / coronet added to Tottenham Court Road and Bedford Avenue corners of cladding
 - 13- Parapets and grillage amended from anodised aluminium to PPC aluminium
 - 14- Opening window added for natural smoke ventilation strategy

Bennetts Associates Architects
 1 Rawlstone Place London EC1V 7NL
 T +44 (0) 20 7620 3300 F +44 (0) 20 7620 3333
 E mail@bennettsassociates.com
For Bennetts Associates' electronic information issue disclaimer -> www.bennettsassociates.com/informationforclients/

Project
One Bedford Avenue
 Exemplar Properties (Bedford) Ltd.

Drawing Title
 Planning
 Sixth Floor Plan

Drawing Number
 1217_P_106

Scale @ A3 1:200 Scale @ A1 1:100 Revision Date 150602

Project No. 1217

Revision
 F

YY MM DD